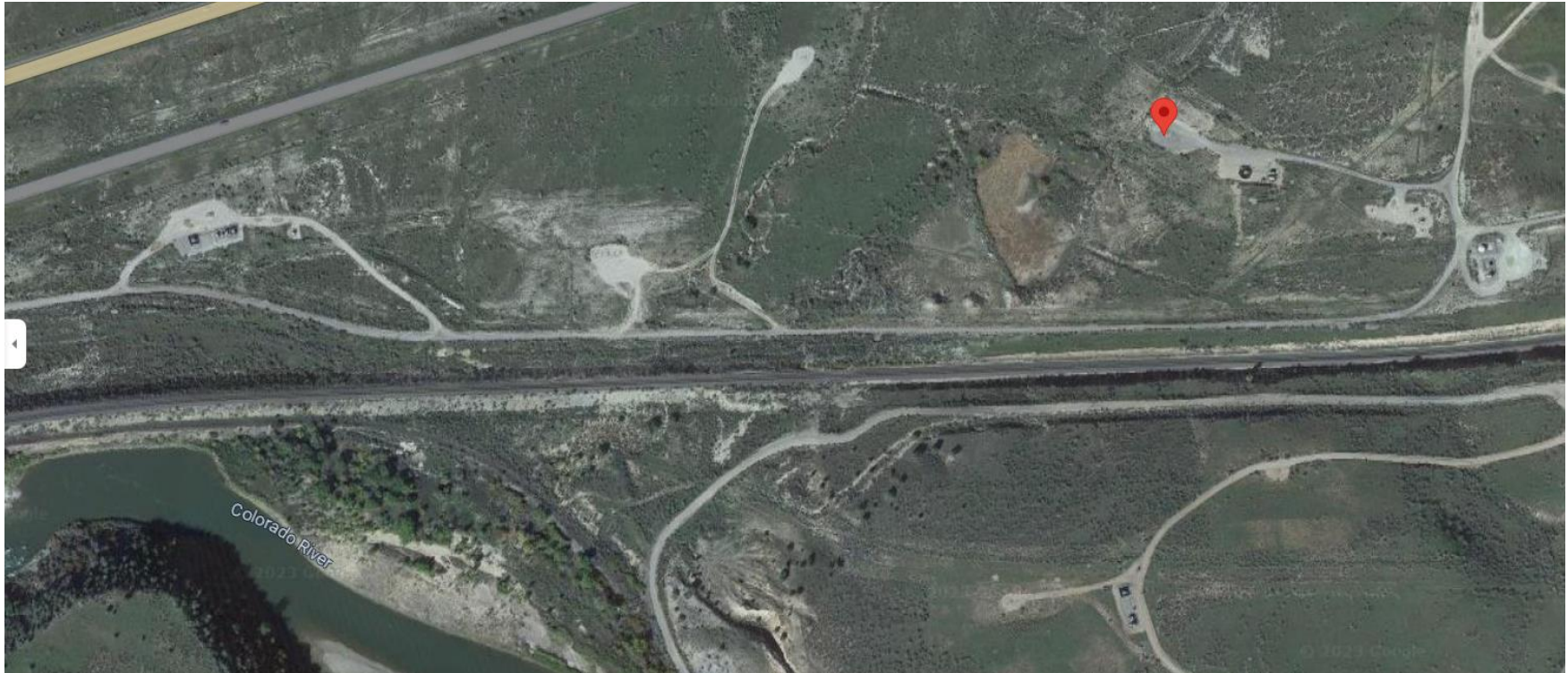


**Storm Water Management and Erosion control**  
**Location Name: TEP ROCKY MOUNTAIN LLC RMV 96-28 Pad**  
**Location ID: 335122**



**Location Overview: Location is within close proximity to High Priority/Density/NSO Habitat areas & Bald Eagle Nest & Roost Sites. Location is approximately 623 yards from the Colorado River.**

**Section/Township/Range: 28 6S94W**



**COLORADO**  
Energy & Carbon Management  
Commission  
Department of Natural Resources



**Storm water Management and Erosion control**  
**Location Name: TEP ROCKY MOUNTAIN LLC RMV 96-28 Pad**  
**Location ID: 335122**



**North West corner of location.**



**North East corner of location.**



**South West corner of location.**



**South East corner of location.**