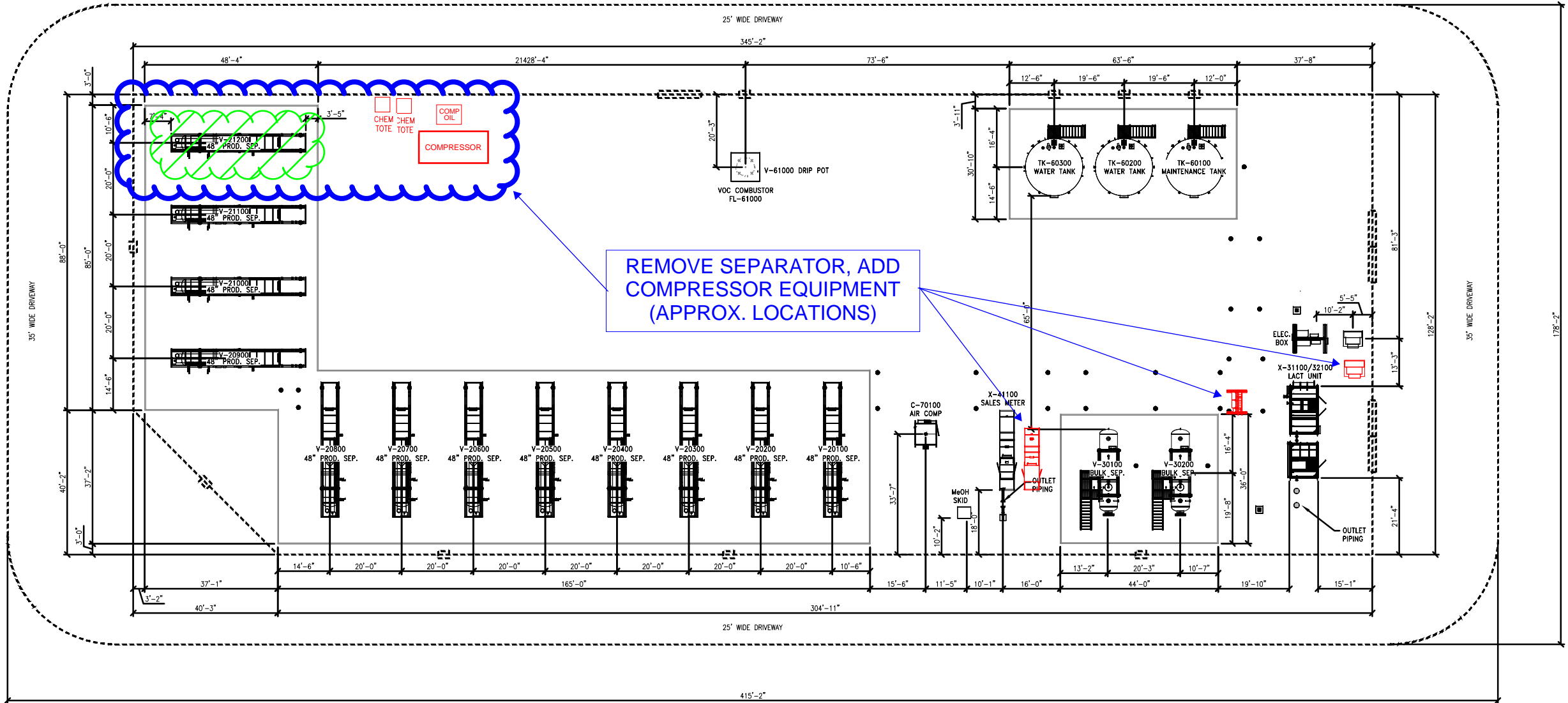


THIS DRAWING AND THE DESIGN IT COVERS ARE CONFIDENTIAL AND REMAIN THE PROPERTY OF ANADARKO PETROLEUM CORPORATION AND SHALL NOT BE DISCLOSED TO OTHERS OR REPRODUCED IN ANY MANNER OR USED FOR ANY PURPOSE WHATSOEVER EXCEPT BY WRITTEN PERMISSION BY THE OWNER.



EQUIPMENT NOZZLE LOCATIONS			
EQUIPMENT TAG/NAME	NORTHING	EASTING	EQUIPMENT BEARING ELEVATION
X-31100/32100 LACT DISCHARGE NOZZLE	1262265'-11.0635"	3214736'-5.2529"	5088'-3.6425"
X-31200/32200 LACT DISCHARGE NOZZLE	1262317'-10.9906"	3214735'-7.7167"	5088'-3.7125"
X-41100 GAS METER DISCHARGE NOZZLE	1262262'-5.3207"	3214654'-7.7959"	5088'-11.7225"

NOTES:

REFERENCE DRAWINGS		REVISIONS					
DWG. NO.	TITLE	NO.	DESCRIPTION	BY	DATE	CHK.	DATE

KERR-MCGEE OIL & GAS ONSHORE LP	
AZUL 13-13HZ (WEST)	

PLOT PLAN PRODUCTION FACILITIES W/ CONSTRUCTION DIMENSIONS		
DRAWN BY: MRW	CREATION DATE: 12/21/17	A/E No.: -
APPROVED: JTK	APPR. DATE: 12/21/17	
DWG. No.: X20318-STOR-01-PP-2030		SHEET No. 3
SCALE: NONE		