

Inspection Photos
Location Name: Castor 7-59-12 PAD
Location ID: 465272



Photo 1 – 12-1-3 Wellhead



Photo 2 – 12-1-5 Wellhead

Inspection Photos
Location Name: Castor 7-59-12 PAD
Location ID: 465272

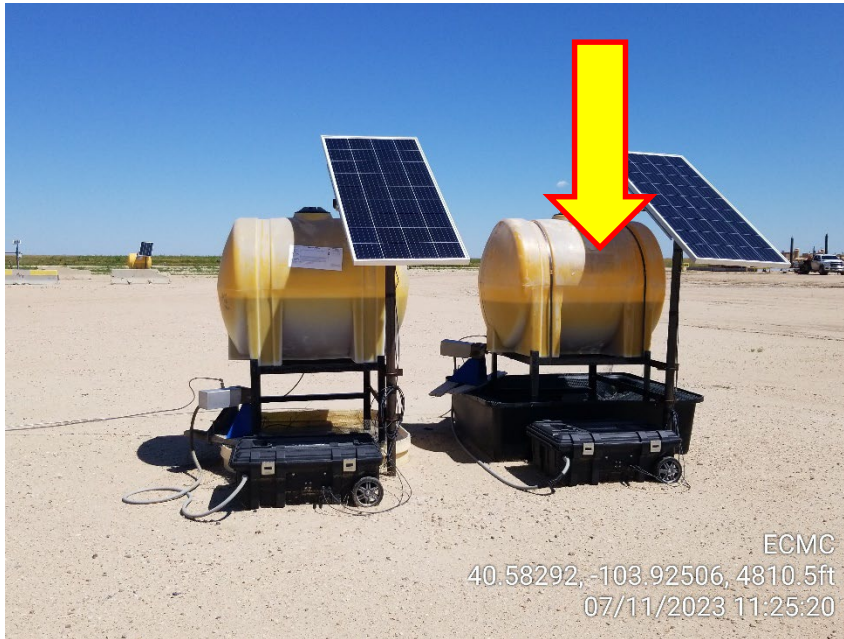


Photo 3 – East Container missing Labels



Photo 4 – East Container missing Labels

Inspection Photos
Location Name: Castor 7-59-12 PAD
Location ID: 465272



Photo 5 – 12-1-1 Wellhead

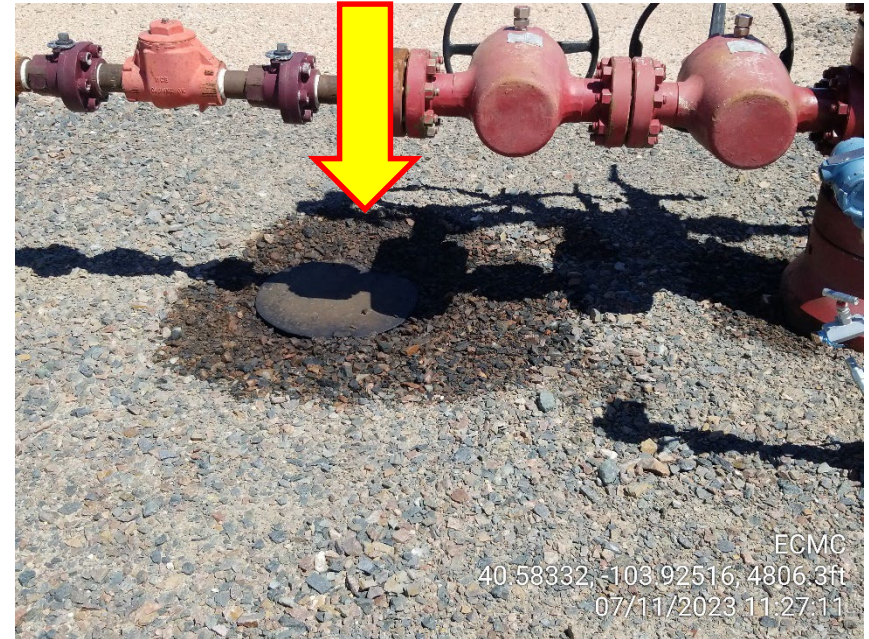


Photo 6 – Stained Soil at 12-1-1 Wellhead

Inspection Photos
Location Name: Castor 7-59-12 PAD
Location ID: 465272



Photo 7 – Separators



Photo 8 – Gas Meters

Inspection Photos
Location Name: Castor 7-59-12 PAD
Location ID: 465272



Photo 9 – ECD



Photo 10 – Generators



Inspection Photos
Location Name: Castor 7-59-12 PAD
Location ID: 465272



Photo 11 – Tank Battery – Oil Tanks



Photo 12 – Labels missing

Location ID: 465272



Photo 13 – Tank Battery Signs



Photo 14 – VRUs

Inspection Photos
Location Name: Castor 7-59-12 PAD
Location ID: 465272



Photo 15 – Compressor



Photo 16 – Compressor Area

Inspection Photos
Location Name: Castor 7-59-12 PAD
Location ID: 465272



Photo 17 – Compressor Day Tank – Missing Wildlife Netting

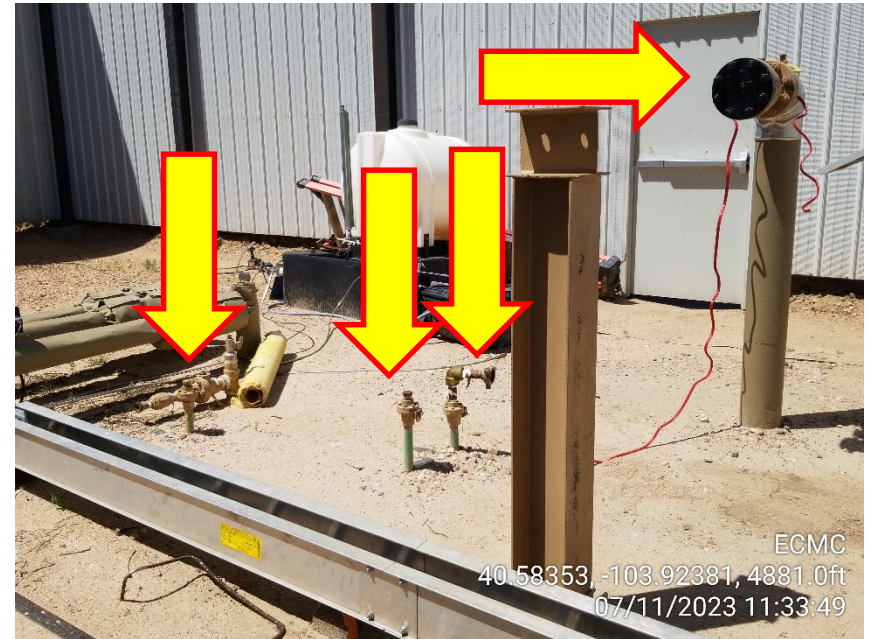


Photo 18 – Unmarked Risers at Compressor

Inspection Photos
Location Name: Castor 7-59-12 PAD
Location ID: 465272



Photo 19 – Tank Battery



Photo 20 – Runoff to Ditch on East Side of Location

Inspection Photos
Location Name: Castor 7-59-12 PAD
Location ID: 465272



Photo 21 – Runoff to Ditch on East Side of Location



Photo 22 – Runoff to Ditch on East Side of Location

Inspection Photos
Location Name: Castor 7-59-12 PAD
Location ID: 465272



Photo 23 – Runoff to Ditch on East Side of Location



Photo 24 – Runoff to Ditch on East Side of Location

Inspection Photos
Location Name: Castor 7-59-12 PAD
Location ID: 465272



**Photo 25 – Runoff to Ditch on East Side of Location –
Looking North**



**Photo 26 – Runoff to Ditch on East Side of Location –
Looking South**