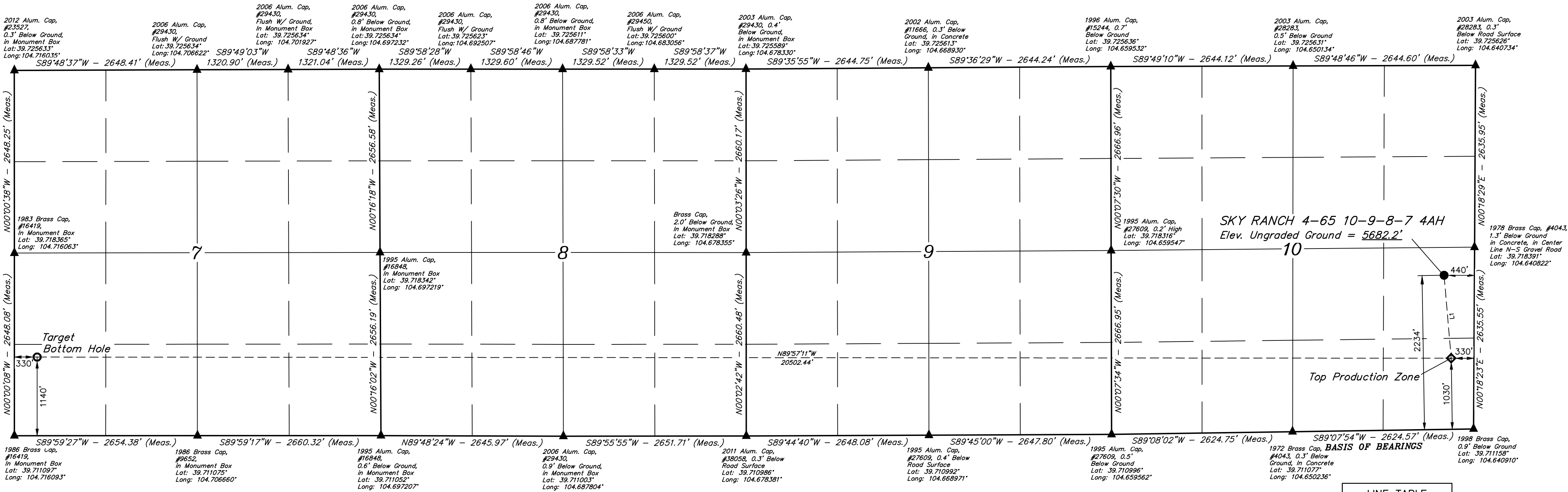
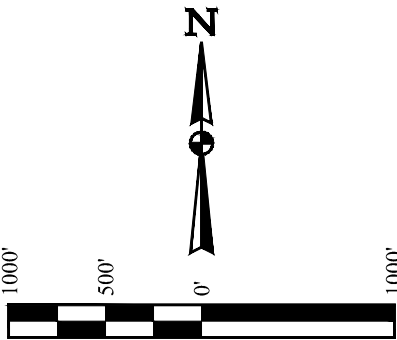


SKY RANCH 4-65 10-9-8-7 4AH  
NE 1/4 SE 1/4, SECTION 10, T4S, R65W, 6th P.M.  
ARAPAHOE COUNTY, COLORADO

BASIS OF ELEVATION  
OPUS SOLUTION GENERATED NAVD 88



LINE TABLE		
LINE	DIRECTION	LENGTH
L1	S04°55'23"E	1207.48'

NOTE:  
Distances referenced on plat to section lines are perpendicular.

LEGEND:

- = PROPOSED WELLHEAD.
- = TARGET BOTTOM HOLE.
- ◆ = TOP PRODUCTION ZONE.
- ▲ = SECTION CORNERS LOCATED. (NAD 83)

NAD 83 (SURFACE LOCATION)	NAD 83 (TOP PRODUCTION ZONE)	NAD 83 (TARGET BOTTOM HOLE)
LATITUDE = 39°43'02.20" (39.717278°)	LATITUDE = 39°42'50.31" (39.713975°)	LATITUDE = 39°42'51.20" (39.714223°)
LONGITUDE = 104°38'32.64" (104.642399°)	LONGITUDE = 104°38'31.37" (104.64048°)	LONGITUDE = 104°42'53.67" (104.714908°)
NAD 27 (SURFACE LOCATION)	NAD 27 (TOP PRODUCTION ZONE)	NAD 27 (TARGET BOTTOM HOLE)
LATITUDE = 39°43'02.25" (39.717291°)	LATITUDE = 39°42'50.36" (39.713988°)	LATITUDE = 39°42'51.25" (39.714236°)
LONGITUDE = 104°38'30.75" (104.641876°)	LONGITUDE = 104°38'29.49" (104.641524°)	LONGITUDE = 104°42'51.77" (104.714381°)
STATE PLANE NAD 83 (CO. CEN.)	STATE PLANE NAD 83 (CO. CEN.)	STATE PLANE NAD 83 (CO. CENTRAL)
N: 1687286.72' E: 3241250.81'	N: 1686084.58' E: 3241360.96'	N: 1685989.55' E: 3220863.79'
STATE PLANE NAD 27 (CO. CEN.)	STATE PLANE NAD 27 (CO. CEN.)	STATE PLANE NAD 27 (CO. CENTRAL)
N: 687279.10' E: 2241404.39'	N: 686076.97' E: 2241514.56'	N: 685981.62' E: 2221017.56'

CERTIFICATE OF RECORDING  
THIS IS TO CERTIFY THAT THE ABOVE DESCRIBED SURVEY WAS MADE IN ACCORDANCE WITH THE NOTES OF ACTUAL SURVEYS MADE BY ME OR UNDER MY SUPERVISION, AND THAT THE SAME ARE TRUE AND CORRECT TO THE BEST OF MY KNOWLEDGE AND BELIEF.

REGISTERED LAND SURVEYOR  
REGISTRATION NO. 28285  
STATE OF COLORADO  
JULIAN R. BROWN

UINTEAH  
SURVEILLING & LAND SURVEYING

UELS, LLC  
Corporate Office \* 85 South 200 East  
Vernal, UT 84078 \* (435) 789-1017

SURVEYED BY GREG WEIMER, O.R.  
DRAWN BY J.U.

12-17-20  
04-23-19

SCALE  
1" = 1000'

WELL LOCATION PLAT

PDOP = 1.5

REV: 5 08-08-22 K.C. (WELL NAME CHANGE)