

40°F Sunny  
8:40

Levi K. Brooklyn W. David I with Apex  
Arrived at site at Koch 41-6 met with  
field crews, and David with Apex.

8:45

Inspected wellhead at Koch 41-6 and took photos  
of the Vermagee P+A's.

9:00

Moved over to the Kenneth E. Koch Flowline  
left in place, walked and inspected Flowline, photographed  
excavations, began labeling bags for screening

Sample ID	Coordinates	PID	Submitted for analysis
9:15 SS-1 @ 5'	40.08181, -105.03860	0.0 ppm	yes
9:35 SS-2 @ 5'	40.08160, -105.03835	0.0 ppm	no
9:55 SS-3 @ 5'	40.08137, -105.03817	0.0 ppm	yes
10:15 SS-4 @ 5'	40.08110, -105.03779	0.1 ppm	no
10:35 SS-5 @ 5'	40.08085, -105.03785	0.0 ppm	yes
10:50 SS-6 @ 5'	40.08057, -105.03783	0.2 ppm	no
10:05 SS-7 @ 5'	40.08030, -105.03773	0.1 ppm	yes

11:10

Completed Sampling at site and cleaned up headed to  
Koch tank Battery to collect samples for P+A. will  
return to site for backgrounds.

LK

12-5-2022

INVENTOR SIGNATURE

DISCLOSED TO AND UNDERSTOOD BY

PRINTED NAME

PRINTED NAME

DATE

DATE



19°F  
partly cloudy

11:15

Levik. Brooklyn W., David I with Apex,  
Arrived at site to complete sampling at Separator  
and tank Battery.

Separator sample @ Connection

12:25

Sample ID	Coordinates	PID	Submitted for analysis
<del>SS-8@</del> SS-1@2'	40.08004, -105.03767	0.0 ppm	yes
Sample ID	Coordinates	PID	Submitted for analysis

Tank Battery

1:40

BH-1@ 6'	<del>40.</del> 40.07961, -105.03761	0.1	yes
----------	-------------------------------------	-----	-----

1:50

SW-1@ 4'	40.07962, -105.03761	0.1	yes
----------	----------------------	-----	-----

2:00

SW-2@ 4'	40.07959, -105.03757	135.4	yes
----------	----------------------	-------	-----

2:10

SW-3@ 4'	40.07956, -105.03760	124.1	yes
----------	----------------------	-------	-----

2:20

SW-4@ 4'	40.07959, -105.03764	1.5	yes
----------	----------------------	-----	-----

Completed Soil Sampling Ground water  
is present in excavation.

2:35

Collected Groundwater Sample GW-1 For  
analysis of BTEX, Chloride, sulfate, and TDS,  
no visual evidence of impacts to Groundwater.

2:40

Further excavation needed on South and East  
Walls at tank Battery

2:10

Blake + Esjay arrived onsite to help collect  
backgrounds.

1:20

Finished Jarring all background with Blake and  
Esjay, Refer to Blakes Field notes for times.

1:10\*

Brooklyn Collected sample at Kenneth E Koch 1 Flowline,  
Sample number BH-2@6' pid'd at 0.1 ppm.

1:30

Crew moving over to start over excavation @ Kenneth E. Koch warehouse

INVENTOR SIGNATURE

Levik

DISCLOSED TO AND UNDERSTOOD BY

PRINTED NAME

Levik

PRINTED NAME

DATE

12-3-2022

DATE

45°F sunny  
14:30

Blake R. + Levi K.

12-5-2022

Brooklyn + Esjay left site headed for office.

14:50

Blake and I went over to Koch Tank Battery to mark out Flowline from Separator to Battery, for potholing exposure.

LK  
14:55

Arrived back at Kenneth E. Koch 1 wellhead, excavation encountered Groundwater, excavation will go no deeper, excavation will move laterally.

15:45

Put up beams at Kenneth E. Koch 1 wellhead, and started overexcavation.  
Headed over to Koch tank Battery to inspect potholing on line between Separator and Tank Battery, ~~ex~~ LK potholes look clean, ready for sampling tomorrow.

16:00

Leaving site headed for office.

17:00

Arrived back at office, ~~for~~ LK

LK

12-5-2022

INVENTOR SIGNATURE

*Am V*

DISCLOSED TO AND UNDERSTOOD BY

PRINTED NAME

Levi K. K.

PRINTED NAME

DATE

12-5-2022

DATE



Koch Tank Battery  
PROJECT

1200

MarCom: BA/LK/ES/BW  
Onsite to collect Backgrounds

Move to Koch 41-6

Backgrounds

Koch 41-6

Coordinates

1200

BK 1

40.08532, -105.03909

1205

2

40.08522, -105.03915

1210

3

40.08537, -105.03970

1215

4

40.08524, -105.03973

1220

5

40.08504, -105.03973

1225

6

40.08494, -105.03929

1230

7

40.08484, -105.03979

1235

8

40.08466, -105.03934

1240

9

40.08453, -105.03983

1245

10

40.08429, -105.03934

1250

11

40.08281, -105.03970

1255

12

40.08316, -105.04011

Move to Kenneth E Koch wellhead

BackgroundsCoordinates

1310

BK-3

40.08231, -105.03993

~~1315~~

BK-4 @ 2ft

40.08243, -105.03947

~~1320~~

BK-5

~~40.08199, -105.03964 BK~~

1330

BK-4 @ 4ft

40.08243, -105.03947

1435

Brooklyn/Esjay offsite

1500

Markwort pothole locations for screening/sampling near  
tank battery  
offsite

1600

INVENTOR SIGNATURE

DISCLOSED TO AND UNDERSTOOD BY

PRINTED NAME

Blake Robinson

PRINTED NAME

DATE  
1/5/22  
DATE



Continued from page



5

10

15

20

25

30

35



SIGNATURE

*Sam Kim*

DISCLOSED TO AND UNDERSTOOD BY

DATE

DATE

12-5-2022

Continued to page

PROPRIETARY INFORMATION

47°F P. CLOUD WIND 10-12 MPH (STEADY) MARLOW: B.W. APEX: DAVID

0900 ARRIVED @ SITE

0955 SAFETY BRIEF

1010 DISCUSSED SCOPE of SAMPLING PLAN w/APEX

1020 BEGAN SAMPLING

	SAMPLE	COORDINATES	PID (PPM)
1030	SS-2 @ 5'	40.07997, -105.03762	0.5
1045	SS-3 @ 5'	40.07990, -105.03765	0.1
1050	SS-4 @ 5'	40.07984, -105.03763	0.1
1055	SS-5 @ 5'	40.07976, -105.03761	0.2
1100	SS-6 @ 5'	40.07968, -105.03759	0.2

1115 MOVED TO KENNETH E. KOCH #1

1150 RETURNED TO TAKE PHOTOS

1200 ~~1210~~ ~~MOB~~ RETURNED TO SITE FOR FURTHER SAMPLING:

1215 STILL WAITING ON LUCK BREAK TO BE OVER,  
EXCAVATOR IDENTIFIED ISSUE WITH EQUIPMENT

1300 EQUIPMENT BEING JUMPED

1310 EQUIPMENT RUNNING: WAITING FOR ALL CLEAR  
FROM APEX TO TAKE SOURCE SAMPLE

	SAMPLE	COORDINATE	PID (PPM)
1330	SOURCE SAMPLE @ 6'	40.0760, -105.03759	313.1

B.W

INVENTOR SIGNATURE

DISCLOSED TO AND UNDERSTOOD BY

PRINTED NAME

BROOKLYN WESTON

PRINTED NAME

DATE

12-4-22

DATE



- 1055 ARRIVED ON SITE, APEX EMPLOYEES ON SITE
- 1100 DISCUSSED SCOPE & PLAN FOR THIS SITE AND KENNETH & KOCH
- 1113 MOVED TO KENNETH & KOCH
- 1145 RETURNED TO SITE
- 1150 PREPARED FOR SAMPLING; CONFIRMED SAFE TO SAMPLE

	SAMPLE ID	COORDINATES	PID (ppm)
1210	SW - <del>6</del> @ 6' 03"	40.07965, -105.03763	0.2
1215	SW - <del>6</del> @ 5' 04"	40.07964, -105.03764	0.3

INVENTOR SIGNATURE

DISCLOSED TO AND UNDERSTOOD BY

PRINTED NAME

BRADLYN WESTON

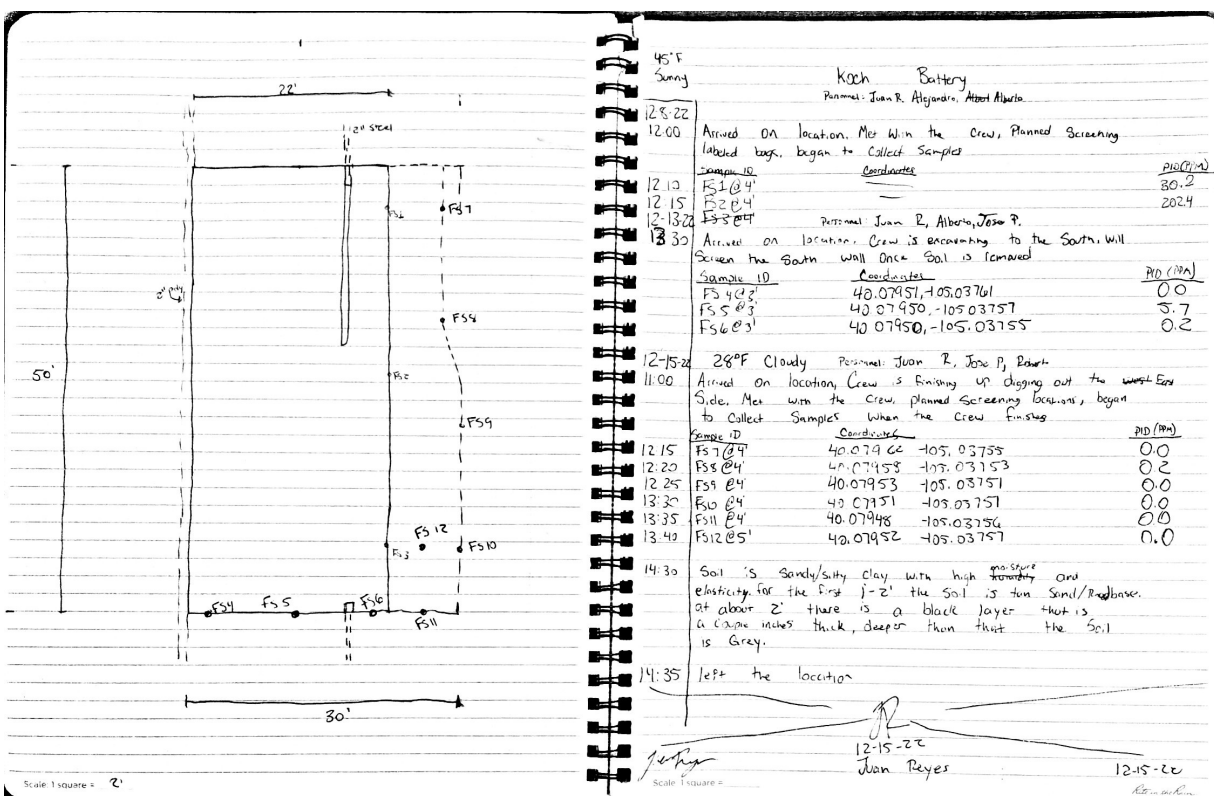
PRINTED NAME

DATE

12-9-22

DATE

From: [Juan Reyes](#)  
To: [Craig Meis](#); [KPK Primary Contractor](#)  
Subject: Koch Battery Field Screen 12-15-22  
Date: Thursday, December 15, 2022 3:11:33 PM





cloudy 27°F

Personnel: CP

KPL: Jann R

APEX: David

12.20.22

0850

Arrived on site and discussed safety with Jann. At the moment  
APEX is not on site.

0900

David from Apex is on site

0915

Began prep work for field sampling

New excavation has an area of 1792 ft<sup>2</sup> → 4 Floor Sumps 176 LbF → 10.5M

Site ID

Coordinates

PID (PPM)

1000

SW-7 @ 4' 40.07965, -105.03769

1.1

1005

SW-8 @ 4' 40.07966, -105.03756

0.9

1010

SW-9 @ 4' 40.07963, -105.03757

0.3

1015

SW-10 @ 4' 40.07959, -105.03754

0.1

1020

SW-11 @ 4' 40.07957, -105.03751

0.9

~~1025~~ 1025

SW-12 @ 4' 40.07950, -105.03757

0.8

1030

SW-13 @ 4' 40.07950, -105.03758

0.4

1035

SW-14 @ 4' 40.07955, -105.03763

0.2

1040

SW-15 @ 4' 40.07958, -105.03769

0.2

1045

SW-16 @ 4' 40.07961, -105.03765

0.8

1050

BH-2 @ 6' 40.07963, -105.03764

1.0

1055

BH-3 @ 6' 40.07962, -105.03758

0.7

1100

BH-4 @ 6' 40.07953, -105.03756

0.4

1105

BH-5 @ 6' 40.07957, -105.03760

0.5

1120

Please note that previous BH samples had a high PID reading  
according to Jann of KPL

All samples were held in the truck before PID Reading

Field sampling has concluded. Mob to Lab

INVENTOR SIGNATURE

DISCLOSED TO AND UNDERSTOOD BY

PRINTED NAME

PRINTED NAME

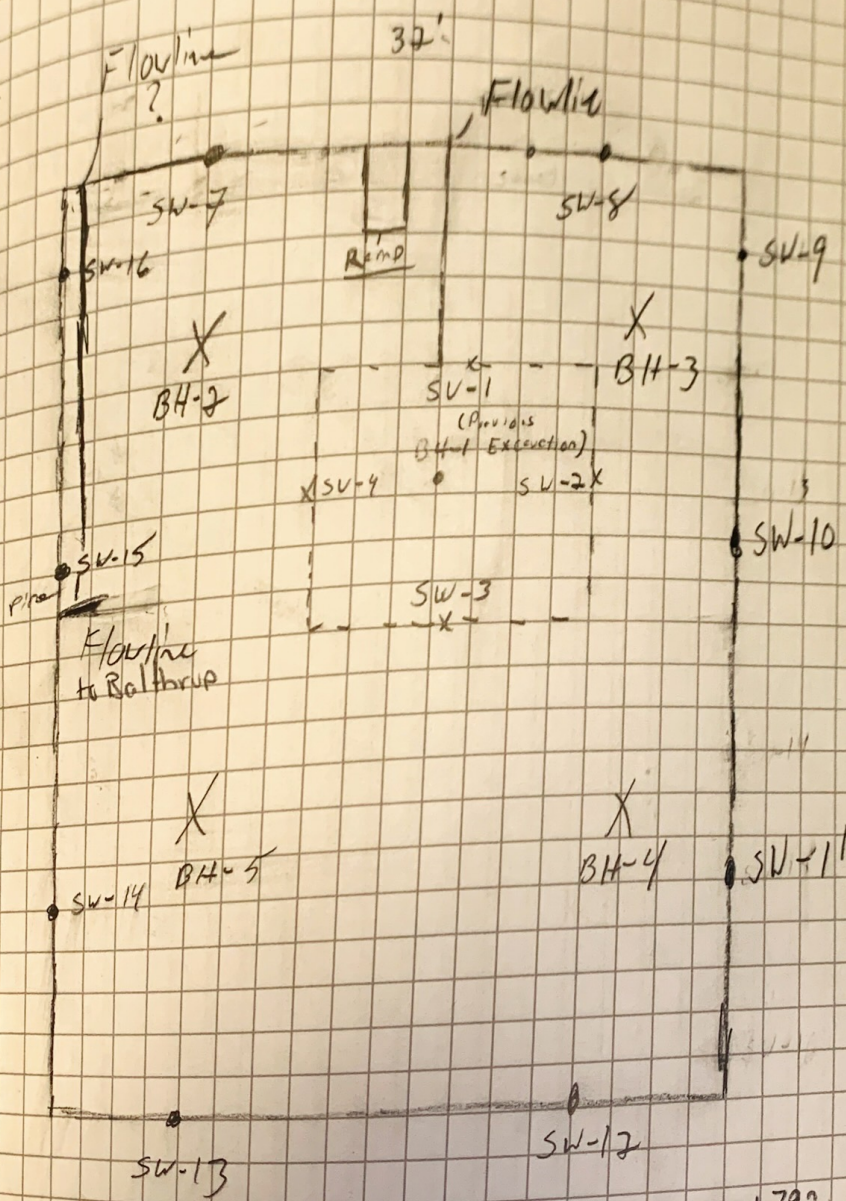
DATE

DATE





# Bottomhole  
with 16-350  
1000  
Flow 1000  
1000  
1000



$A = 1.792 \rightarrow 4$  Bottomhole  
 $LWF = 176/20 \rightarrow 10$  side wells

SIGNATURE

DATE  
12.20.22

CLOSED TO AND UNDERSTOOD BY

DATE

Continued to page

PROPRIETARY INFORMATION



Jan 20<sup>th</sup>

Personnel: CP & ES 01.26.23

1000

Arrived on site and prepared to conduct background sampling

1015

Began background sampling

Sample ID

~~Location~~ <sup>CP</sup> Coordinates

1030

Background-1 @ 4'

~~40.07999, -105.03785~~ 40.08016, -105.03783

1035

Background-1 @ 6'

1045

Background-2 @ 4'

~~40.07999, -105.03785~~ 40.07999, -105.03785

1050

Background-2 @ 6'

1100

Background-3 @ 4'

~~40.07999, -105.03785~~ CP 40.07997, -105.03732

1105

Background-3 @ 6'

1120

Background sampling concluded, mob to Lab to drop off samples

CP

01.26.23



Sunny 350P

Personnel: HC to ES / KPK

1055 Arrived on site / KPK field crew on site  
↳ Tailgate Safety meeting / Work Scope walk through

1100 KPK Starts Excavating further

Site ID	coordinates	PID	Time
SS-1@3		0.9	11:00

1115 Sample has been collected / KPK does not have proper equipment to store soil atm. Waiting for further instruction.

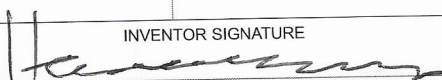
1125 Will have to reschedule further excavation

1130 off site / Mob to ~~lab~~ to Coast #3

HC

1.27.22

INVENTOR SIGNATURE



DISCLOSED TO AND UNDERSTOOD BY

PRINTED NAME

Harrison Coleman

PRINTED NAME