

# **CRESTONE PEAK RESOURCES**

**ARAPAHOE COUNTY**

**SEC 10-T4S-R65W**

**SKY RANCH 4-65 10-9-8-7 1BH**

**OWB**

**Plan: PROPOSAL 1**

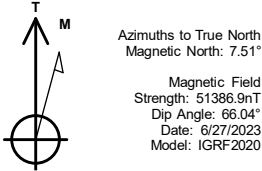
## **Standard Planning Report**

**27 June, 2023**

PROJECT DETAILS: ARAPAHOE COUNTY

Geodetic System: US State Plane 1983  
Datum: North American Datum 1983  
Ellipsoid: GRS 1980  
Zone: Colorado Central Zone  
System Datum: Mean Sea Level

Project: ARAPAHOE COUNTY  
Site: SEC 10-T4S-R65W  
Well: SKY RANCH 4-65 10-9-8-7 1BH  
Wellbore: OWB  
Design: PROPOSAL 1



WELL DETAILS: SKY RANCH 4-65 10-9-8-7 1BH

				5685.20			
+N/-S	+E/-W	Northing	Easting	Latitude	Longitude		Slot
0.00	0.00	1687486.56	3241250.74	39.717827°N	104.642393°W		

SECTION DETAILS

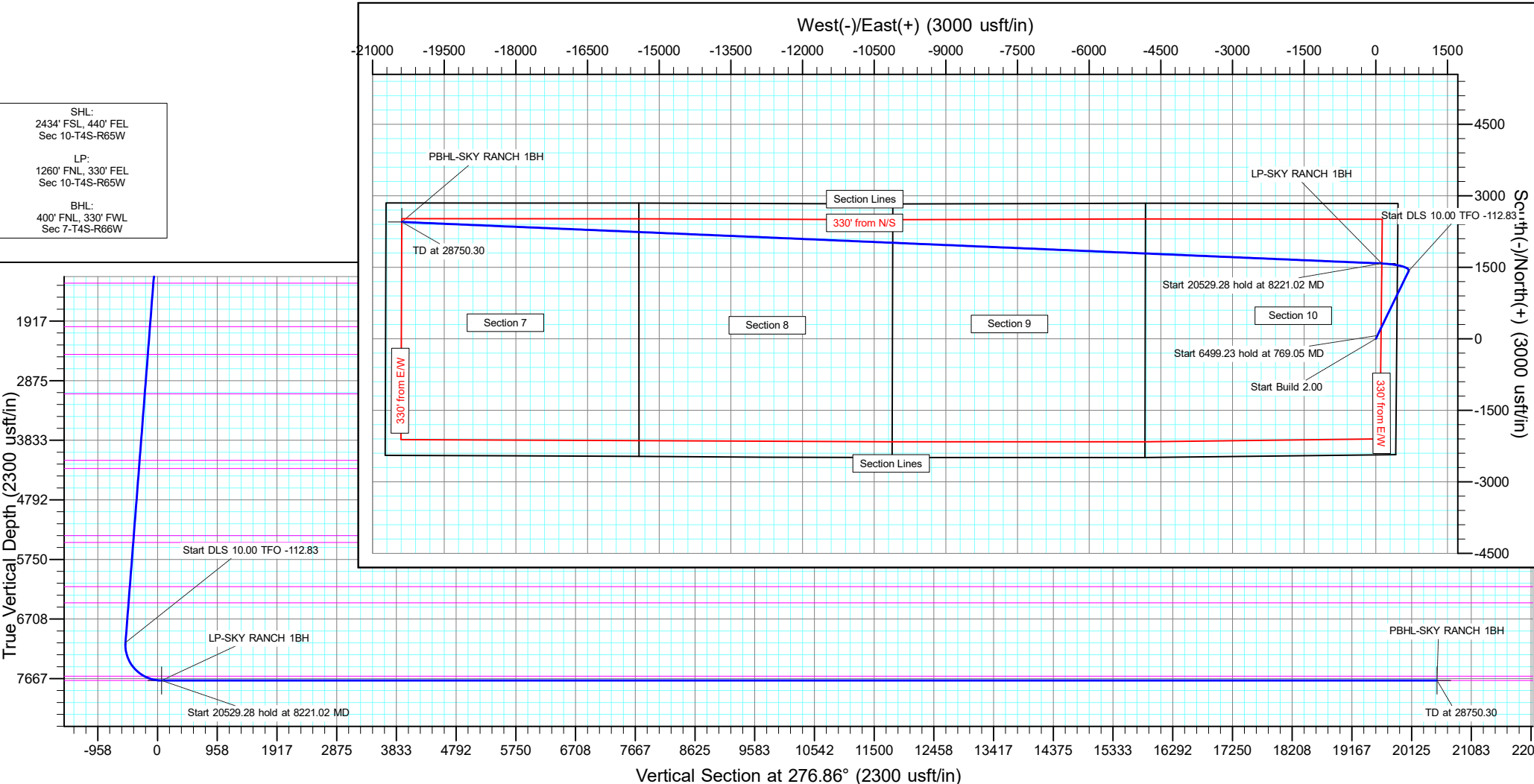
Sec	MD	Inc	Azi	TVD	+N/-S	+E/-W	Dleg	TFace	VSec	Target
1	0.00	0.00	0.00	0.00	0.00	0.00	0.00	0.00	0.00	
2	100.00	0.00	0.00	100.00	0.00	0.00	0.00	0.00	0.00	
3	769.05	13.38	25.83	762.99	70.00	33.89	2.00	25.83	-25.28	
4	7268.28	13.38	25.83	7085.78	1423.81	689.25	0.00	0.00	-514.29	
5	8221.02	90.00	272.43	7697.00	1581.32	124.90	10.00	-112.83	64.84	LP-SKY RANCH 1BH
6	28750.30	90.00	272.43	7697.00	2452.05	-20385.91	0.00	0.00	20532.85	PBHL-SKY RANCH 1BH

ANNOTATIONS

MD	Inc	Azi	TVD	+N/-S	+E/-W	VSec	Departure	Annotation
100.00	0.00	0.00	100.00	0.00	0.00	0.00	0.00	Start Build 2.00
769.05	13.38	25.83	762.99	70.00	33.89	-25.28	77.77	Start 6499.23 hold at 769.05 MD
7268.28	13.38	25.83	7085.78	1423.81	689.25	-514.29	1581.86	Start DLS 10.00 TFO -112.83
8221.02	90.00	272.43	7697.00	1581.32	124.90	64.84	2198.93	Start 20529.28 hold at 8221.02 MD
28750.30	90.00	272.43	7697.00	2452.05	-20385.91	20532.85	22728.21	TD at 28750.30

DESIGN TARGET DETAILS

Name	TVD	+N/-S	+E/-W	Northing	Easting	Latitude	Longitude	Shape
LP-SKY RANCH 1BH	7697.00	1581.32	124.90	1689068.99	3241360.70	39.722168°N	104.641949°W	Point
- plan hits target center								
PBHL-SKY RANCH 1BH	7697.00	2452.05	-20385.91	1689746.04	3220842.72	39.724536°N	104.714867°W	Point
- plan hits target center								



# Civitas Resources

## Planning Report

<b>Database:</b>	EDM	<b>Local Co-ordinate Reference:</b>	Well SKY RANCH 4-65 10-9-8-7 1BH
<b>Company:</b>	CRESTONE PEAK RESOURCES	<b>TVD Reference:</b>	KB 25' @ 5710.20usft
<b>Project:</b>	ARAPAHOE COUNTY	<b>MD Reference:</b>	KB 25' @ 5710.20usft
<b>Site:</b>	SEC 10-T4S-R65W	<b>North Reference:</b>	True
<b>Well:</b>	SKY RANCH 4-65 10-9-8-7 1BH	<b>Survey Calculation Method:</b>	Minimum Curvature
<b>Wellbore:</b>	OWB		
<b>Design:</b>	PROPOSAL 1		

<b>Project</b>	ARAPAHOE COUNTY		
<b>Map System:</b>	US State Plane 1983	<b>System Datum:</b>	Mean Sea Level
<b>Geo Datum:</b>	North American Datum 1983		
<b>Map Zone:</b>	Colorado Central Zone		Using geodetic scale factor

<b>Site</b>	SEC 10-T4S-R65W			
<b>Site Position:</b>		<b>Northing:</b>	1,685,061.36 usft	<b>Latitude:</b> 39.711158°N
<b>From:</b>	Lat/Long	<b>Easting:</b>	3,241,690.88 usft	<b>Longitude:</b> 104.640910°W
<b>Position Uncertainty:</b>	0.00 usft	<b>Slot Radius:</b>	13.200 in	<b>Grid Convergence:</b> 0.54 °

<b>Well</b>	SKY RANCH 4-65 10-9-8-7 1BH			
<b>Well Position</b>	<b>+N/-S</b>	2,429.27 usft	<b>Northing:</b>	1,687,486.56 usft
	<b>+E/-W</b>	-417.19 usft	<b>Easting:</b>	3,241,250.74 usft
<b>Position Uncertainty</b>	0.00 usft	<b>Wellhead Elevation:</b>		<b>Ground Level:</b> 5,685.20 usft

<b>Wellbore</b>	OWB				
<b>Magnetics</b>	<b>Model Name</b>	<b>Sample Date</b>	<b>Declination (°)</b>	<b>Dip Angle (°)</b>	<b>Field Strength (nT)</b>
	IGRF2020	6/27/2023	7.51	66.04	51,386.92727107

<b>Design</b>	PROPOSAL 1			
<b>Audit Notes:</b>				
<b>Version:</b>	<b>Phase:</b>	PROTOTYPE	<b>Tie On Depth:</b>	0.00
<b>Vertical Section:</b>	<b>Depth From (TVD) (usft)</b>	<b>+N/-S (usft)</b>	<b>+E/-W (usft)</b>	<b>Direction (°)</b>
	0.00	0.00	0.00	276.86

<b>Plan Survey Tool Program</b>	<b>Date</b>	6/27/2023		
<b>Depth From (usft)</b>	<b>Depth To (usft)</b>	<b>Survey (Wellbore)</b>	<b>Tool Name</b>	<b>Remarks</b>
1	0.00	28,750.30	PROPOSAL 1 (OWB)	MWD OWSG
				OWSG MWD - Standard

<b>Plan Sections</b>										
<b>Measured Depth (usft)</b>	<b>Inclination (°)</b>	<b>Azimuth (°)</b>	<b>Vertical Depth (usft)</b>	<b>+N/-S (usft)</b>	<b>+E/-W (usft)</b>	<b>Dogleg Rate (°/100ft)</b>	<b>Build Rate (°/100ft)</b>	<b>Turn Rate (°/100ft)</b>	<b>TFO (°)</b>	<b>Target</b>
0.00	0.00	0.00	0.00	0.00	0.00	0.00	0.00	0.00	0.00	
100.00	0.00	0.00	100.00	0.00	0.00	0.00	0.00	0.00	0.00	
769.05	13.38	25.83	762.99	70.00	33.89	2.00	2.00	0.00	25.83	
7,268.28	13.38	25.83	7,085.78	1,423.81	689.25	0.00	0.00	0.00	0.00	
8,221.02	90.00	272.43	7,697.00	1,581.33	124.90	10.00	8.04	-11.90	-112.83	LP-SKY RANCH 1BH
28,750.30	90.00	272.43	7,697.00	2,452.05	-20,385.91	0.00	0.00	0.00	0.00	PBHL-SKY RANCH 1

# Civitas Resources

## Planning Report

<b>Database:</b>	EDM	<b>Local Co-ordinate Reference:</b>	Well SKY RANCH 4-65 10-9-8-7 1BH
<b>Company:</b>	CRESTONE PEAK RESOURCES	<b>TVD Reference:</b>	KB 25' @ 5710.20usft
<b>Project:</b>	ARAPAHOE COUNTY	<b>MD Reference:</b>	KB 25' @ 5710.20usft
<b>Site:</b>	SEC 10-T4S-R65W	<b>North Reference:</b>	True
<b>Well:</b>	SKY RANCH 4-65 10-9-8-7 1BH	<b>Survey Calculation Method:</b>	Minimum Curvature
<b>Wellbore:</b>	OWB		
<b>Design:</b>	PROPOSAL 1		

Planned Survey									
Measured Depth (usft)	Inclination (°)	Azimuth (°)	Vertical Depth (usft)	+N/-S (usft)	+E/-W (usft)	Vertical Section (usft)	Dogleg Rate (°/100ft)	Build Rate (°/100ft)	Turn Rate (°/100ft)
0.00	0.00	0.00	0.00	0.00	0.00	0.00	0.00	0.00	0.00
24.00	0.00	0.00	24.00	0.00	0.00	0.00	0.00	0.00	0.00
<b>Denver</b>									
100.00	0.00	0.00	100.00	0.00	0.00	0.00	0.00	0.00	0.00
<b>Start Build 2.00</b>									
200.00	2.00	25.83	199.98	1.57	0.76	-0.57	2.00	2.00	0.00
300.00	4.00	25.83	299.84	6.28	3.04	-2.27	2.00	2.00	0.00
400.00	6.00	25.83	399.45	14.13	6.84	-5.10	2.00	2.00	0.00
500.00	8.00	25.83	498.70	25.09	12.15	-9.06	2.00	2.00	0.00
600.00	10.00	25.83	597.47	39.17	18.96	-14.15	2.00	2.00	0.00
700.00	12.00	25.83	695.62	56.35	27.28	-20.35	2.00	2.00	0.00
711.64	12.23	25.83	707.00	58.55	28.34	-21.15	2.00	2.00	0.00
<b>Arapahoe</b>									
769.05	13.38	25.83	762.99	70.00	33.89	-25.28	2.00	2.00	0.00
<b>Start 6499.23 hold at 769.05 MD</b>									
800.00	13.38	25.83	793.09	76.45	37.01	-27.61	0.00	0.00	0.00
900.00	13.38	25.83	890.38	97.28	47.09	-35.14	0.00	0.00	0.00
1,000.00	13.38	25.83	987.66	118.11	57.18	-42.66	0.00	0.00	0.00
1,100.00	13.38	25.83	1,084.95	138.94	67.26	-50.19	0.00	0.00	0.00
1,200.00	13.38	25.83	1,182.24	159.77	77.34	-57.71	0.00	0.00	0.00
1,300.00	13.38	25.83	1,279.52	180.60	87.43	-65.23	0.00	0.00	0.00
1,328.25	13.38	25.83	1,307.00	186.48	90.27	-67.36	0.00	0.00	0.00
<b>Laramie-Fox Hills Formation</b>									
1,400.00	13.38	25.83	1,376.81	201.43	97.51	-72.76	0.00	0.00	0.00
1,500.00	13.38	25.83	1,474.09	222.26	107.59	-80.28	0.00	0.00	0.00
1,600.00	13.38	25.83	1,571.38	243.09	117.68	-87.81	0.00	0.00	0.00
1,700.00	13.38	25.83	1,668.66	263.92	127.76	-95.33	0.00	0.00	0.00
1,800.00	13.38	25.83	1,765.95	284.75	137.85	-102.85	0.00	0.00	0.00
1,900.00	13.38	25.83	1,863.23	305.58	147.93	-110.38	0.00	0.00	0.00
2,000.00	13.38	25.83	1,960.52	326.41	158.01	-117.90	0.00	0.00	0.00
2,047.78	13.38	25.83	2,007.00	336.36	162.83	-121.50	0.00	0.00	0.00
<b>Pierre Formation</b>									
2,100.00	13.38	25.83	2,057.80	347.24	168.10	-125.43	0.00	0.00	0.00
2,200.00	13.38	25.83	2,155.09	368.07	178.18	-132.95	0.00	0.00	0.00
2,300.00	13.38	25.83	2,252.37	388.90	188.26	-140.47	0.00	0.00	0.00
2,400.00	13.38	25.83	2,349.66	409.73	198.35	-148.00	0.00	0.00	0.00
2,500.00	13.38	25.83	2,446.94	430.56	208.43	-155.52	0.00	0.00	0.00
2,505.20	13.38	25.83	2,452.00	431.64	208.96	-155.91	0.00	0.00	0.00
<b>Upper Pierre aquifer</b>									
2,600.00	13.38	25.83	2,544.23	451.39	218.52	-163.05	0.00	0.00	0.00
2,700.00	13.38	25.83	2,641.51	472.22	228.60	-170.57	0.00	0.00	0.00
2,800.00	13.38	25.83	2,738.80	493.05	238.68	-178.09	0.00	0.00	0.00
2,900.00	13.38	25.83	2,836.08	513.88	248.77	-185.62	0.00	0.00	0.00
3,000.00	13.38	25.83	2,933.37	534.71	258.85	-193.14	0.00	0.00	0.00
3,100.00	13.38	25.83	3,030.66	555.54	268.93	-200.67	0.00	0.00	0.00
3,157.92	13.38	25.83	3,087.00	567.61	274.77	-205.02	0.00	0.00	0.00
<b>Base of Upper Pierre aquifer</b>									
3,200.00	13.38	25.83	3,127.94	576.37	279.02	-208.19	0.00	0.00	0.00
3,300.00	13.38	25.83	3,225.23	597.20	289.10	-215.71	0.00	0.00	0.00
3,400.00	13.38	25.83	3,322.51	618.03	299.19	-223.24	0.00	0.00	0.00
3,500.00	13.38	25.83	3,419.80	638.86	309.27	-230.76	0.00	0.00	0.00
3,600.00	13.38	25.83	3,517.08	659.69	319.35	-238.29	0.00	0.00	0.00
3,700.00	13.38	25.83	3,614.37	680.52	329.44	-245.81	0.00	0.00	0.00

# Civitas Resources

## Planning Report

<b>Database:</b>	EDM	<b>Local Co-ordinate Reference:</b>	Well SKY RANCH 4-65 10-9-8-7 1BH
<b>Company:</b>	CRESTONE PEAK RESOURCES	<b>TVD Reference:</b>	KB 25' @ 5710.20usft
<b>Project:</b>	ARAPAHOE COUNTY	<b>MD Reference:</b>	KB 25' @ 5710.20usft
<b>Site:</b>	SEC 10-T4S-R65W	<b>North Reference:</b>	True
<b>Well:</b>	SKY RANCH 4-65 10-9-8-7 1BH	<b>Survey Calculation Method:</b>	Minimum Curvature
<b>Wellbore:</b>	OWB		
<b>Design:</b>	PROPOSAL 1		

Planned Survey									
Measured Depth (usft)	Inclination (°)	Azimuth (°)	Vertical Depth (usft)	+N/-S (usft)	+E/-W (usft)	Vertical Section (usft)	Dogleg Rate (°/100ft)	Build Rate (°/100ft)	Turn Rate (°/100ft)
3,800.00	13.38	25.83	3,711.65	701.35	339.52	-253.33	0.00	0.00	0.00
3,900.00	13.38	25.83	3,808.94	722.18	349.60	-260.86	0.00	0.00	0.00
4,000.00	13.38	25.83	3,906.22	743.02	359.69	-268.38	0.00	0.00	0.00
4,100.00	13.38	25.83	4,003.51	763.85	369.77	-275.91	0.00	0.00	0.00
4,200.00	13.38	25.83	4,100.79	784.68	379.86	-283.43	0.00	0.00	0.00
4,257.78	13.38	25.83	4,157.00	796.71	385.68	-287.78	0.00	0.00	0.00
Larimer ("Parkman") sandstone									
4,300.00	13.38	25.83	4,198.08	805.51	389.94	-290.95	0.00	0.00	0.00
4,391.40	13.38	25.83	4,287.00	824.55	399.16	-297.83	0.00	0.00	0.00
Pierre Formation									
4,400.00	13.38	25.83	4,295.36	826.34	400.02	-298.48	0.00	0.00	0.00
4,500.00	13.38	25.83	4,392.65	847.17	410.11	-306.00	0.00	0.00	0.00
4,600.00	13.38	25.83	4,489.93	868.00	420.19	-313.53	0.00	0.00	0.00
4,700.00	13.38	25.83	4,587.22	888.83	430.27	-321.05	0.00	0.00	0.00
4,800.00	13.38	25.83	4,684.50	909.66	440.36	-328.57	0.00	0.00	0.00
4,900.00	13.38	25.83	4,781.79	930.49	450.44	-336.10	0.00	0.00	0.00
5,000.00	13.38	25.83	4,879.07	951.32	460.53	-343.62	0.00	0.00	0.00
5,100.00	13.38	25.83	4,976.36	972.15	470.61	-351.15	0.00	0.00	0.00
5,200.00	13.38	25.83	5,073.65	992.98	480.69	-358.67	0.00	0.00	0.00
5,300.00	13.38	25.83	5,170.93	1,013.81	490.78	-366.20	0.00	0.00	0.00
5,400.00	13.38	25.83	5,268.22	1,034.64	500.86	-373.72	0.00	0.00	0.00
5,500.00	13.38	25.83	5,365.50	1,055.47	510.94	-381.24	0.00	0.00	0.00
5,501.54	13.38	25.83	5,367.00	1,055.79	511.10	-381.36	0.00	0.00	0.00
Terry ("Sussex") sandstone									
5,600.00	13.38	25.83	5,462.79	1,076.30	521.03	-388.77	0.00	0.00	0.00
5,614.61	13.38	25.83	5,477.00	1,079.34	522.50	-389.87	0.00	0.00	0.00
Pierre Formation									
5,700.00	13.38	25.83	5,560.07	1,097.13	531.11	-396.29	0.00	0.00	0.00
5,800.00	13.38	25.83	5,657.36	1,117.96	541.20	-403.82	0.00	0.00	0.00
5,900.00	13.38	25.83	5,754.64	1,138.79	551.28	-411.34	0.00	0.00	0.00
6,000.00	13.38	25.83	5,851.93	1,159.62	561.36	-418.86	0.00	0.00	0.00
6,100.00	13.38	25.83	5,949.21	1,180.45	571.45	-426.39	0.00	0.00	0.00
6,200.00	13.38	25.83	6,046.50	1,201.28	581.53	-433.91	0.00	0.00	0.00
6,300.00	13.38	25.83	6,143.78	1,222.11	591.61	-441.44	0.00	0.00	0.00
6,344.42	13.38	25.83	6,187.00	1,231.36	596.09	-444.78	0.00	0.00	0.00
Hygiene ("Shannon") sandstone									
6,400.00	13.38	25.83	6,241.07	1,242.94	601.70	-448.96	0.00	0.00	0.00
6,500.00	13.38	25.83	6,338.35	1,263.77	611.78	-456.48	0.00	0.00	0.00
6,600.00	13.38	25.83	6,435.64	1,284.60	621.87	-464.01	0.00	0.00	0.00
6,611.68	13.38	25.83	6,447.00	1,287.03	623.04	-464.89	0.00	0.00	0.00
Pierre Formation									
6,700.00	13.38	25.83	6,532.92	1,305.43	631.95	-471.53	0.00	0.00	0.00
6,800.00	13.38	25.83	6,630.21	1,326.26	642.03	-479.06	0.00	0.00	0.00
6,900.00	13.38	25.83	6,727.49	1,347.09	652.12	-486.58	0.00	0.00	0.00
7,000.00	13.38	25.83	6,824.78	1,367.92	662.20	-494.10	0.00	0.00	0.00
7,100.00	13.38	25.83	6,922.07	1,388.75	672.28	-501.63	0.00	0.00	0.00
7,200.00	13.38	25.83	7,019.35	1,409.58	682.37	-509.15	0.00	0.00	0.00
7,268.28	13.38	25.83	7,085.78	1,423.81	689.25	-514.29	0.00	0.00	0.00
Start DLS 10.00 TFO -112.83									
7,300.00	12.49	12.19	7,116.70	1,430.46	691.58	-515.80	10.00	-2.81	-43.00
7,350.00	12.65	349.08	7,165.53	1,441.13	691.68	-514.63	10.00	0.31	-46.23
7,400.00	14.60	329.39	7,214.15	1,451.93	687.43	-509.12	10.00	3.90	-39.38
7,450.00	17.76	315.40	7,262.18	1,462.79	678.87	-499.32	10.00	6.33	-27.99

# Civitas Resources

## Planning Report

<b>Database:</b>	EDM	<b>Local Co-ordinate Reference:</b>	Well SKY RANCH 4-65 10-9-8-7 1BH
<b>Company:</b>	CRESTONE PEAK RESOURCES	<b>TVD Reference:</b>	KB 25' @ 5710.20usft
<b>Project:</b>	ARAPAHOE COUNTY	<b>MD Reference:</b>	KB 25' @ 5710.20usft
<b>Site:</b>	SEC 10-T4S-R65W	<b>North Reference:</b>	True
<b>Well:</b>	SKY RANCH 4-65 10-9-8-7 1BH	<b>Survey Calculation Method:</b>	Minimum Curvature
<b>Wellbore:</b>	OWB		
<b>Design:</b>	PROPOSAL 1		

Planned Survey									
Measured Depth (usft)	Inclination (°)	Azimuth (°)	Vertical Depth (usft)	+N/-S (usft)	+E/-W (usft)	Vertical Section (usft)	Dogleg Rate (°/100ft)	Build Rate (°/100ft)	Turn Rate (°/100ft)
7,500.00	21.61	305.87	7,309.26	1,473.63	666.04	-485.29	10.00	7.70	-19.05
7,550.00	25.84	299.22	7,355.03	1,484.35	649.06	-467.15	10.00	8.46	-13.30
7,600.00	30.29	294.37	7,399.15	1,494.88	628.05	-445.04	10.00	8.91	-9.70
7,650.00	34.88	290.68	7,441.27	1,505.14	603.17	-419.11	10.00	9.18	-7.39
7,700.00	39.56	287.75	7,481.07	1,515.05	574.61	-389.57	10.00	9.36	-5.85
7,750.00	44.30	285.36	7,518.26	1,524.54	542.59	-356.65	10.00	9.48	-4.79
7,800.00	49.08	283.34	7,552.55	1,533.53	507.35	-320.58	10.00	9.56	-4.04
7,850.00	53.89	281.60	7,583.68	1,541.95	469.16	-281.66	10.00	9.62	-3.49
7,900.00	58.72	280.05	7,611.41	1,549.74	428.31	-240.18	10.00	9.67	-3.09
7,931.41	61.77	279.16	7,627.00	1,554.29	401.43	-212.94	10.00	9.69	-2.83
Sharon Springs Member									
7,950.00	63.57	278.66	7,635.54	1,556.85	385.11	-196.44	10.00	9.71	-2.70
8,000.00	68.43	277.38	7,655.87	1,563.21	339.90	-150.78	10.00	9.72	-2.56
8,050.00	73.30	276.19	7,672.25	1,568.78	293.00	-103.56	10.00	9.74	-2.39
8,100.00	78.18	275.05	7,684.56	1,573.52	244.79	-55.13	10.00	9.75	-2.27
8,150.00	83.06	273.95	7,692.71	1,577.38	195.63	-5.85	10.00	9.76	-2.19
8,200.00	87.95	272.88	7,696.62	1,580.35	145.88	43.89	10.00	9.77	-2.15
8,221.02	90.00	272.43	7,697.00	1,581.33	124.90	64.84	10.00	9.77	-2.13
Start 20529.28 hold at 8221.02 MD - Niobrara Formation									
8,300.00	90.00	272.43	7,697.00	1,584.68	45.98	143.59	0.00	0.00	0.00
8,400.00	90.00	272.43	7,697.00	1,588.92	-53.93	243.29	0.00	0.00	0.00
8,500.00	90.00	272.43	7,697.00	1,593.16	-153.84	342.99	0.00	0.00	0.00
8,600.00	90.00	272.43	7,697.00	1,597.40	-253.75	442.69	0.00	0.00	0.00
8,700.00	90.00	272.43	7,697.00	1,601.64	-353.66	542.40	0.00	0.00	0.00
8,800.00	90.00	272.43	7,697.00	1,605.88	-453.57	642.10	0.00	0.00	0.00
8,900.00	90.00	272.43	7,697.00	1,610.12	-553.48	741.80	0.00	0.00	0.00
9,000.00	90.00	272.43	7,697.00	1,614.36	-653.39	841.50	0.00	0.00	0.00
9,100.00	90.00	272.43	7,697.00	1,618.61	-753.30	941.20	0.00	0.00	0.00
9,200.00	90.00	272.43	7,697.00	1,622.85	-853.21	1,040.90	0.00	0.00	0.00
9,300.00	90.00	272.43	7,697.00	1,627.09	-953.12	1,140.60	0.00	0.00	0.00
9,400.00	90.00	272.43	7,697.00	1,631.33	-1,053.03	1,240.31	0.00	0.00	0.00
9,500.00	90.00	272.43	7,697.00	1,635.57	-1,152.94	1,340.01	0.00	0.00	0.00
9,600.00	90.00	272.43	7,697.00	1,639.81	-1,252.85	1,439.71	0.00	0.00	0.00
9,700.00	90.00	272.43	7,697.00	1,644.05	-1,352.76	1,539.41	0.00	0.00	0.00
9,800.00	90.00	272.43	7,697.00	1,648.30	-1,452.67	1,639.11	0.00	0.00	0.00
9,900.00	90.00	272.43	7,697.00	1,652.54	-1,552.58	1,738.81	0.00	0.00	0.00
10,000.00	90.00	272.43	7,697.00	1,656.78	-1,652.49	1,838.52	0.00	0.00	0.00
10,100.00	90.00	272.43	7,697.00	1,661.02	-1,752.40	1,938.22	0.00	0.00	0.00
10,200.00	90.00	272.43	7,697.00	1,665.26	-1,852.31	2,037.92	0.00	0.00	0.00
10,300.00	90.00	272.43	7,697.00	1,669.50	-1,952.22	2,137.62	0.00	0.00	0.00
10,400.00	90.00	272.43	7,697.00	1,673.74	-2,052.13	2,237.32	0.00	0.00	0.00
10,500.00	90.00	272.43	7,697.00	1,677.98	-2,152.04	2,337.02	0.00	0.00	0.00
10,600.00	90.00	272.43	7,697.00	1,682.23	-2,251.95	2,436.72	0.00	0.00	0.00
10,700.00	90.00	272.43	7,697.00	1,686.47	-2,351.86	2,536.43	0.00	0.00	0.00
10,800.00	90.00	272.43	7,697.00	1,690.71	-2,451.77	2,636.13	0.00	0.00	0.00
10,900.00	90.00	272.43	7,697.00	1,694.95	-2,551.68	2,735.83	0.00	0.00	0.00
11,000.00	90.00	272.43	7,697.00	1,699.19	-2,651.59	2,835.53	0.00	0.00	0.00
11,100.00	90.00	272.43	7,697.00	1,703.43	-2,751.50	2,935.23	0.00	0.00	0.00
11,200.00	90.00	272.43	7,697.00	1,707.67	-2,851.41	3,034.93	0.00	0.00	0.00
11,300.00	90.00	272.43	7,697.00	1,711.92	-2,951.32	3,134.64	0.00	0.00	0.00
11,400.00	90.00	272.43	7,697.00	1,716.16	-3,051.23	3,234.34	0.00	0.00	0.00
11,500.00	90.00	272.43	7,697.00	1,720.40	-3,151.14	3,334.04	0.00	0.00	0.00
11,600.00	90.00	272.43	7,697.00	1,724.64	-3,251.05	3,433.74	0.00	0.00	0.00
11,700.00	90.00	272.43	7,697.00	1,728.88	-3,350.96	3,533.44	0.00	0.00	0.00

# Civitas Resources

## Planning Report

<b>Database:</b>	EDM	<b>Local Co-ordinate Reference:</b>	Well SKY RANCH 4-65 10-9-8-7 1BH
<b>Company:</b>	CRESTONE PEAK RESOURCES	<b>TVD Reference:</b>	KB 25' @ 5710.20usft
<b>Project:</b>	ARAPAHOE COUNTY	<b>MD Reference:</b>	KB 25' @ 5710.20usft
<b>Site:</b>	SEC 10-T4S-R65W	<b>North Reference:</b>	True
<b>Well:</b>	SKY RANCH 4-65 10-9-8-7 1BH	<b>Survey Calculation Method:</b>	Minimum Curvature
<b>Wellbore:</b>	OWB		
<b>Design:</b>	PROPOSAL 1		

Planned Survey										
Measured Depth (usft)	Inclination (°)	Azimuth (°)	Vertical Depth (usft)	+N/-S (usft)	+E/-W (usft)	Vertical Section (usft)	Dogleg Rate (°/100ft)	Build Rate (°/100ft)	Turn Rate (°/100ft)	
11,800.00	90.00	272.43	7,697.00	1,733.12	-3,450.87	3,633.14	0.00	0.00	0.00	
11,900.00	90.00	272.43	7,697.00	1,737.36	-3,550.78	3,732.84	0.00	0.00	0.00	
12,000.00	90.00	272.43	7,697.00	1,741.61	-3,650.69	3,832.55	0.00	0.00	0.00	
12,100.00	90.00	272.43	7,697.00	1,745.85	-3,750.60	3,932.25	0.00	0.00	0.00	
12,200.00	90.00	272.43	7,697.00	1,750.09	-3,850.51	4,031.95	0.00	0.00	0.00	
12,300.00	90.00	272.43	7,697.00	1,754.33	-3,950.42	4,131.65	0.00	0.00	0.00	
12,400.00	90.00	272.43	7,697.00	1,758.57	-4,050.33	4,231.35	0.00	0.00	0.00	
12,500.00	90.00	272.43	7,697.00	1,762.81	-4,150.24	4,331.05	0.00	0.00	0.00	
12,600.00	90.00	272.43	7,697.00	1,767.05	-4,250.15	4,430.76	0.00	0.00	0.00	
12,700.00	90.00	272.43	7,697.00	1,771.29	-4,350.06	4,530.46	0.00	0.00	0.00	
12,800.00	90.00	272.43	7,697.00	1,775.54	-4,449.97	4,630.16	0.00	0.00	0.00	
12,900.00	90.00	272.43	7,697.00	1,779.78	-4,549.88	4,729.86	0.00	0.00	0.00	
13,000.00	90.00	272.43	7,697.00	1,784.02	-4,649.79	4,829.56	0.00	0.00	0.00	
13,100.00	90.00	272.43	7,697.00	1,788.26	-4,749.70	4,929.26	0.00	0.00	0.00	
13,200.00	90.00	272.43	7,697.00	1,792.50	-4,849.61	5,028.96	0.00	0.00	0.00	
13,300.00	90.00	272.43	7,697.00	1,796.74	-4,949.52	5,128.67	0.00	0.00	0.00	
13,400.00	90.00	272.43	7,697.00	1,800.98	-5,049.43	5,228.37	0.00	0.00	0.00	
13,500.00	90.00	272.43	7,697.00	1,805.23	-5,149.34	5,328.07	0.00	0.00	0.00	
13,600.00	90.00	272.43	7,697.00	1,809.47	-5,249.25	5,427.77	0.00	0.00	0.00	
13,700.00	90.00	272.43	7,697.00	1,813.71	-5,349.16	5,527.47	0.00	0.00	0.00	
13,800.00	90.00	272.43	7,697.00	1,817.95	-5,449.07	5,627.17	0.00	0.00	0.00	
13,900.00	90.00	272.43	7,697.00	1,822.19	-5,548.98	5,726.88	0.00	0.00	0.00	
14,000.00	90.00	272.43	7,697.00	1,826.43	-5,648.89	5,826.58	0.00	0.00	0.00	
14,100.00	90.00	272.43	7,697.00	1,830.67	-5,748.80	5,926.28	0.00	0.00	0.00	
14,200.00	90.00	272.43	7,697.00	1,834.92	-5,848.71	6,025.98	0.00	0.00	0.00	
14,300.00	90.00	272.43	7,697.00	1,839.16	-5,948.62	6,125.68	0.00	0.00	0.00	
14,400.00	90.00	272.43	7,697.00	1,843.40	-6,048.53	6,225.38	0.00	0.00	0.00	
14,500.00	90.00	272.43	7,697.00	1,847.64	-6,148.44	6,325.08	0.00	0.00	0.00	
14,600.00	90.00	272.43	7,697.00	1,851.88	-6,248.35	6,424.79	0.00	0.00	0.00	
14,700.00	90.00	272.43	7,697.00	1,856.12	-6,348.26	6,524.49	0.00	0.00	0.00	
14,800.00	90.00	272.43	7,697.00	1,860.36	-6,448.17	6,624.19	0.00	0.00	0.00	
14,900.00	90.00	272.43	7,697.00	1,864.60	-6,548.08	6,723.89	0.00	0.00	0.00	
15,000.00	90.00	272.43	7,697.00	1,868.85	-6,647.99	6,823.59	0.00	0.00	0.00	
15,100.00	90.00	272.43	7,697.00	1,873.09	-6,747.90	6,923.29	0.00	0.00	0.00	
15,200.00	90.00	272.43	7,697.00	1,877.33	-6,847.81	7,023.00	0.00	0.00	0.00	
15,300.00	90.00	272.43	7,697.00	1,881.57	-6,947.72	7,122.70	0.00	0.00	0.00	
15,400.00	90.00	272.43	7,697.00	1,885.81	-7,047.63	7,222.40	0.00	0.00	0.00	
15,500.00	90.00	272.43	7,697.00	1,890.05	-7,147.54	7,322.10	0.00	0.00	0.00	
15,600.00	90.00	272.43	7,697.00	1,894.29	-7,247.45	7,421.80	0.00	0.00	0.00	
15,700.00	90.00	272.43	7,697.00	1,898.54	-7,347.36	7,521.50	0.00	0.00	0.00	
15,800.00	90.00	272.43	7,697.00	1,902.78	-7,447.27	7,621.21	0.00	0.00	0.00	
15,900.00	90.00	272.43	7,697.00	1,907.02	-7,547.18	7,720.91	0.00	0.00	0.00	
16,000.00	90.00	272.43	7,697.00	1,911.26	-7,647.09	7,820.61	0.00	0.00	0.00	
16,100.00	90.00	272.43	7,697.00	1,915.50	-7,747.00	7,920.31	0.00	0.00	0.00	
16,200.00	90.00	272.43	7,697.00	1,919.74	-7,846.91	8,020.01	0.00	0.00	0.00	
16,300.00	90.00	272.43	7,697.00	1,923.98	-7,946.82	8,119.71	0.00	0.00	0.00	
16,400.00	90.00	272.43	7,697.00	1,928.23	-8,046.73	8,219.41	0.00	0.00	0.00	
16,500.00	90.00	272.43	7,697.00	1,932.47	-8,146.64	8,319.12	0.00	0.00	0.00	
16,600.00	90.00	272.43	7,697.00	1,936.71	-8,246.55	8,418.82	0.00	0.00	0.00	
16,700.00	90.00	272.43	7,697.00	1,940.95	-8,346.46	8,518.52	0.00	0.00	0.00	
16,800.00	90.00	272.43	7,697.00	1,945.19	-8,446.37	8,618.22	0.00	0.00	0.00	
16,900.00	90.00	272.43	7,697.00	1,949.43	-8,546.28	8,717.92	0.00	0.00	0.00	
17,000.00	90.00	272.43	7,697.00	1,953.67	-8,646.19	8,817.62	0.00	0.00	0.00	
17,100.00	90.00	272.43	7,697.00	1,957.91	-8,746.10	8,917.33	0.00	0.00	0.00	

# Civitas Resources

## Planning Report

<b>Database:</b>	EDM	<b>Local Co-ordinate Reference:</b>	Well SKY RANCH 4-65 10-9-8-7 1BH
<b>Company:</b>	CRESTONE PEAK RESOURCES	<b>TVD Reference:</b>	KB 25' @ 5710.20usft
<b>Project:</b>	ARAPAHOE COUNTY	<b>MD Reference:</b>	KB 25' @ 5710.20usft
<b>Site:</b>	SEC 10-T4S-R65W	<b>North Reference:</b>	True
<b>Well:</b>	SKY RANCH 4-65 10-9-8-7 1BH	<b>Survey Calculation Method:</b>	Minimum Curvature
<b>Wellbore:</b>	OWB		
<b>Design:</b>	PROPOSAL 1		

Planned Survey										
Measured Depth (usft)	Inclination (°)	Azimuth (°)	Vertical Depth (usft)	+N/-S (usft)	+E/-W (usft)	Vertical Section (usft)	Dogleg Rate (°/100ft)	Build Rate (°/100ft)	Turn Rate (°/100ft)	
17,200.00	90.00	272.43	7,697.00	1,962.16	-8,846.01	9,017.03	0.00	0.00	0.00	
17,300.00	90.00	272.43	7,697.00	1,966.40	-8,945.92	9,116.73	0.00	0.00	0.00	
17,400.00	90.00	272.43	7,697.00	1,970.64	-9,045.83	9,216.43	0.00	0.00	0.00	
17,500.00	90.00	272.43	7,697.00	1,974.88	-9,145.74	9,316.13	0.00	0.00	0.00	
17,600.00	90.00	272.43	7,697.00	1,979.12	-9,245.65	9,415.83	0.00	0.00	0.00	
17,700.00	90.00	272.43	7,697.00	1,983.36	-9,345.56	9,515.53	0.00	0.00	0.00	
17,800.00	90.00	272.43	7,697.00	1,987.60	-9,445.47	9,615.24	0.00	0.00	0.00	
17,900.00	90.00	272.43	7,697.00	1,991.85	-9,545.38	9,714.94	0.00	0.00	0.00	
18,000.00	90.00	272.43	7,697.00	1,996.09	-9,645.29	9,814.64	0.00	0.00	0.00	
18,100.00	90.00	272.43	7,697.00	2,000.33	-9,745.20	9,914.34	0.00	0.00	0.00	
18,200.00	90.00	272.43	7,697.00	2,004.57	-9,845.11	10,014.04	0.00	0.00	0.00	
18,300.00	90.00	272.43	7,697.00	2,008.81	-9,945.02	10,113.74	0.00	0.00	0.00	
18,400.00	90.00	272.43	7,697.00	2,013.05	-10,044.93	10,213.45	0.00	0.00	0.00	
18,500.00	90.00	272.43	7,697.00	2,017.29	-10,144.84	10,313.15	0.00	0.00	0.00	
18,600.00	90.00	272.43	7,697.00	2,021.53	-10,244.75	10,412.85	0.00	0.00	0.00	
18,700.00	90.00	272.43	7,697.00	2,025.78	-10,344.66	10,512.55	0.00	0.00	0.00	
18,800.00	90.00	272.43	7,697.00	2,030.02	-10,444.57	10,612.25	0.00	0.00	0.00	
18,900.00	90.00	272.43	7,697.00	2,034.26	-10,544.48	10,711.95	0.00	0.00	0.00	
19,000.00	90.00	272.43	7,697.00	2,038.50	-10,644.39	10,811.65	0.00	0.00	0.00	
19,100.00	90.00	272.43	7,697.00	2,042.74	-10,744.30	10,911.36	0.00	0.00	0.00	
19,200.00	90.00	272.43	7,697.00	2,046.98	-10,844.21	11,011.06	0.00	0.00	0.00	
19,300.00	90.00	272.43	7,697.00	2,051.22	-10,944.12	11,110.76	0.00	0.00	0.00	
19,400.00	90.00	272.43	7,697.00	2,055.47	-11,044.03	11,210.46	0.00	0.00	0.00	
19,500.00	90.00	272.43	7,697.00	2,059.71	-11,143.94	11,310.16	0.00	0.00	0.00	
19,600.00	90.00	272.43	7,697.00	2,063.95	-11,243.85	11,409.86	0.00	0.00	0.00	
19,700.00	90.00	272.43	7,697.00	2,068.19	-11,343.76	11,509.57	0.00	0.00	0.00	
19,800.00	90.00	272.43	7,697.00	2,072.43	-11,443.67	11,609.27	0.00	0.00	0.00	
19,900.00	90.00	272.43	7,697.00	2,076.67	-11,543.58	11,708.97	0.00	0.00	0.00	
20,000.00	90.00	272.43	7,697.00	2,080.91	-11,643.49	11,808.67	0.00	0.00	0.00	
20,100.00	90.00	272.43	7,697.00	2,085.16	-11,743.40	11,908.37	0.00	0.00	0.00	
20,200.00	90.00	272.43	7,697.00	2,089.40	-11,843.31	12,008.07	0.00	0.00	0.00	
20,300.00	90.00	272.43	7,697.00	2,093.64	-11,943.22	12,107.77	0.00	0.00	0.00	
20,400.00	90.00	272.43	7,697.00	2,097.88	-12,043.13	12,207.48	0.00	0.00	0.00	
20,500.00	90.00	272.43	7,697.00	2,102.12	-12,143.04	12,307.18	0.00	0.00	0.00	
20,600.00	90.00	272.43	7,697.00	2,106.36	-12,242.95	12,406.88	0.00	0.00	0.00	
20,700.00	90.00	272.43	7,697.00	2,110.60	-12,342.86	12,506.58	0.00	0.00	0.00	
20,800.00	90.00	272.43	7,697.00	2,114.84	-12,442.77	12,606.28	0.00	0.00	0.00	
20,900.00	90.00	272.43	7,697.00	2,119.09	-12,542.68	12,705.98	0.00	0.00	0.00	
21,000.00	90.00	272.43	7,697.00	2,123.33	-12,642.59	12,805.69	0.00	0.00	0.00	
21,100.00	90.00	272.43	7,697.00	2,127.57	-12,742.50	12,905.39	0.00	0.00	0.00	
21,200.00	90.00	272.43	7,697.00	2,131.81	-12,842.41	13,005.09	0.00	0.00	0.00	
21,300.00	90.00	272.43	7,697.00	2,136.05	-12,942.32	13,104.79	0.00	0.00	0.00	
21,400.00	90.00	272.43	7,697.00	2,140.29	-13,042.23	13,204.49	0.00	0.00	0.00	
21,500.00	90.00	272.43	7,697.00	2,144.53	-13,142.14	13,304.19	0.00	0.00	0.00	
21,600.00	90.00	272.43	7,697.00	2,148.78	-13,242.05	13,403.89	0.00	0.00	0.00	
21,700.00	90.00	272.43	7,697.00	2,153.02	-13,341.96	13,503.60	0.00	0.00	0.00	
21,800.00	90.00	272.43	7,697.00	2,157.26	-13,441.87	13,603.30	0.00	0.00	0.00	
21,900.00	90.00	272.43	7,697.00	2,161.50	-13,541.78	13,703.00	0.00	0.00	0.00	
22,000.00	90.00	272.43	7,697.00	2,165.74	-13,641.69	13,802.70	0.00	0.00	0.00	
22,100.00	90.00	272.43	7,697.00	2,169.98	-13,741.60	13,902.40	0.00	0.00	0.00	
22,200.00	90.00	272.43	7,697.00	2,174.22	-13,841.51	14,002.10	0.00	0.00	0.00	
22,300.00	90.00	272.43	7,697.00	2,178.47	-13,941.42	14,101.81	0.00	0.00	0.00	
22,400.00	90.00	272.43	7,697.00	2,182.71	-14,041.33	14,201.51	0.00	0.00	0.00	
22,500.00	90.00	272.43	7,697.00	2,186.95	-14,141.24	14,301.21	0.00	0.00	0.00	



# Civitas Resources

## Planning Report

<b>Database:</b>	EDM	<b>Local Co-ordinate Reference:</b>	Well SKY RANCH 4-65 10-9-8-7 1BH
<b>Company:</b>	CRESTONE PEAK RESOURCES	<b>TVD Reference:</b>	KB 25' @ 5710.20usft
<b>Project:</b>	ARAPAHOE COUNTY	<b>MD Reference:</b>	KB 25' @ 5710.20usft
<b>Site:</b>	SEC 10-T4S-R65W	<b>North Reference:</b>	True
<b>Well:</b>	SKY RANCH 4-65 10-9-8-7 1BH	<b>Survey Calculation Method:</b>	Minimum Curvature
<b>Wellbore:</b>	OWB		
<b>Design:</b>	PROPOSAL 1		

Planned Survey									
Measured Depth (usft)	Inclination (°)	Azimuth (°)	Vertical Depth (usft)	+N/-S (usft)	+E/-W (usft)	Vertical Section (usft)	Dogleg Rate (°/100ft)	Build Rate (°/100ft)	Turn Rate (°/100ft)
22,600.00	90.00	272.43	7,697.00	2,191.19	-14,241.15	14,400.91	0.00	0.00	0.00
22,700.00	90.00	272.43	7,697.00	2,195.43	-14,341.06	14,500.61	0.00	0.00	0.00
22,800.00	90.00	272.43	7,697.00	2,199.67	-14,440.97	14,600.31	0.00	0.00	0.00
22,900.00	90.00	272.43	7,697.00	2,203.91	-14,540.88	14,700.01	0.00	0.00	0.00
23,000.00	90.00	272.43	7,697.00	2,208.15	-14,640.79	14,799.72	0.00	0.00	0.00
23,100.00	90.00	272.43	7,697.00	2,212.40	-14,740.70	14,899.42	0.00	0.00	0.00
23,200.00	90.00	272.43	7,697.00	2,216.64	-14,840.61	14,999.12	0.00	0.00	0.00
23,300.00	90.00	272.43	7,697.00	2,220.88	-14,940.52	15,098.82	0.00	0.00	0.00
23,400.00	90.00	272.43	7,697.00	2,225.12	-15,040.43	15,198.52	0.00	0.00	0.00
23,500.00	90.00	272.43	7,697.00	2,229.36	-15,140.34	15,298.22	0.00	0.00	0.00
23,600.00	90.00	272.43	7,697.00	2,233.60	-15,240.25	15,397.93	0.00	0.00	0.00
23,700.00	90.00	272.43	7,697.00	2,237.84	-15,340.16	15,497.63	0.00	0.00	0.00
23,800.00	90.00	272.43	7,697.00	2,242.09	-15,440.07	15,597.33	0.00	0.00	0.00
23,900.00	90.00	272.43	7,697.00	2,246.33	-15,539.98	15,697.03	0.00	0.00	0.00
24,000.00	90.00	272.43	7,697.00	2,250.57	-15,639.89	15,796.73	0.00	0.00	0.00
24,100.00	90.00	272.43	7,697.00	2,254.81	-15,739.80	15,896.43	0.00	0.00	0.00
24,200.00	90.00	272.43	7,697.00	2,259.05	-15,839.71	15,996.13	0.00	0.00	0.00
24,300.00	90.00	272.43	7,697.00	2,263.29	-15,939.62	16,095.84	0.00	0.00	0.00
24,400.00	90.00	272.43	7,697.00	2,267.53	-16,039.53	16,195.54	0.00	0.00	0.00
24,500.00	90.00	272.43	7,697.00	2,271.78	-16,139.44	16,295.24	0.00	0.00	0.00
24,600.00	90.00	272.43	7,697.00	2,276.02	-16,239.35	16,394.94	0.00	0.00	0.00
24,700.00	90.00	272.43	7,697.00	2,280.26	-16,339.26	16,494.64	0.00	0.00	0.00
24,800.00	90.00	272.43	7,697.00	2,284.50	-16,439.17	16,594.34	0.00	0.00	0.00
24,900.00	90.00	272.43	7,697.00	2,288.74	-16,539.08	16,694.05	0.00	0.00	0.00
25,000.00	90.00	272.43	7,697.00	2,292.98	-16,638.99	16,793.75	0.00	0.00	0.00
25,100.00	90.00	272.43	7,697.00	2,297.22	-16,738.90	16,893.45	0.00	0.00	0.00
25,200.00	90.00	272.43	7,697.00	2,301.46	-16,838.81	16,993.15	0.00	0.00	0.00
25,300.00	90.00	272.43	7,697.00	2,305.71	-16,938.72	17,092.85	0.00	0.00	0.00
25,400.00	90.00	272.43	7,697.00	2,309.95	-17,038.63	17,192.55	0.00	0.00	0.00
25,500.00	90.00	272.43	7,697.00	2,314.19	-17,138.54	17,292.25	0.00	0.00	0.00
25,600.00	90.00	272.43	7,697.00	2,318.43	-17,238.45	17,391.96	0.00	0.00	0.00
25,700.00	90.00	272.43	7,697.00	2,322.67	-17,338.36	17,491.66	0.00	0.00	0.00
25,800.00	90.00	272.43	7,697.00	2,326.91	-17,438.27	17,591.36	0.00	0.00	0.00
25,900.00	90.00	272.43	7,697.00	2,331.15	-17,538.18	17,691.06	0.00	0.00	0.00
26,000.00	90.00	272.43	7,697.00	2,335.40	-17,638.09	17,790.76	0.00	0.00	0.00
26,100.00	90.00	272.43	7,697.00	2,339.64	-17,738.00	17,890.46	0.00	0.00	0.00
26,200.00	90.00	272.43	7,697.00	2,343.88	-17,837.91	17,990.17	0.00	0.00	0.00
26,300.00	90.00	272.43	7,697.00	2,348.12	-17,937.82	18,089.87	0.00	0.00	0.00
26,400.00	90.00	272.43	7,697.00	2,352.36	-18,037.73	18,189.57	0.00	0.00	0.00
26,500.00	90.00	272.43	7,697.00	2,356.60	-18,137.64	18,289.27	0.00	0.00	0.00
26,600.00	90.00	272.43	7,697.00	2,360.84	-18,237.55	18,388.97	0.00	0.00	0.00
26,700.00	90.00	272.43	7,697.00	2,365.09	-18,337.46	18,488.67	0.00	0.00	0.00
26,800.00	90.00	272.43	7,697.00	2,369.33	-18,437.37	18,588.37	0.00	0.00	0.00
26,900.00	90.00	272.43	7,697.00	2,373.57	-18,537.28	18,688.08	0.00	0.00	0.00
27,000.00	90.00	272.43	7,697.00	2,377.81	-18,637.19	18,787.78	0.00	0.00	0.00
27,100.00	90.00	272.43	7,697.00	2,382.05	-18,737.10	18,887.48	0.00	0.00	0.00
27,200.00	90.00	272.43	7,697.00	2,386.29	-18,837.01	18,987.18	0.00	0.00	0.00
27,300.00	90.00	272.43	7,697.00	2,390.53	-18,936.92	19,086.88	0.00	0.00	0.00
27,400.00	90.00	272.43	7,697.00	2,394.77	-19,036.83	19,186.58	0.00	0.00	0.00
27,500.00	90.00	272.43	7,697.00	2,399.02	-19,136.74	19,286.29	0.00	0.00	0.00
27,600.00	90.00	272.43	7,697.00	2,403.26	-19,236.65	19,385.99	0.00	0.00	0.00
27,700.00	90.00	272.43	7,697.00	2,407.50	-19,336.56	19,485.69	0.00	0.00	0.00
27,800.00	90.00	272.43	7,697.00	2,411.74	-19,436.47	19,585.39	0.00	0.00	0.00
27,900.00	90.00	272.43	7,697.00	2,415.98	-19,536.38	19,685.09	0.00	0.00	0.00

# Civitas Resources

## Planning Report

<b>Database:</b>	EDM	<b>Local Co-ordinate Reference:</b>	Well SKY RANCH 4-65 10-9-8-7 1BH
<b>Company:</b>	CRESTONE PEAK RESOURCES	<b>TVD Reference:</b>	KB 25' @ 5710.20usft
<b>Project:</b>	ARAPAHOE COUNTY	<b>MD Reference:</b>	KB 25' @ 5710.20usft
<b>Site:</b>	SEC 10-T4S-R65W	<b>North Reference:</b>	True
<b>Well:</b>	SKY RANCH 4-65 10-9-8-7 1BH	<b>Survey Calculation Method:</b>	Minimum Curvature
<b>Wellbore:</b>	OWB		
<b>Design:</b>	PROPOSAL 1		

Planned Survey									
Measured Depth (usft)	Inclination (°)	Azimuth (°)	Vertical Depth (usft)	+N/-S (usft)	+E/-W (usft)	Vertical Section (usft)	Dogleg Rate (°/100ft)	Build Rate (°/100ft)	Turn Rate (°/100ft)
28,000.00	90.00	272.43	7,697.00	2,420.22	-19,636.29	19,784.79	0.00	0.00	0.00
28,100.00	90.00	272.43	7,697.00	2,424.46	-19,736.20	19,884.49	0.00	0.00	0.00
28,200.00	90.00	272.43	7,697.00	2,428.71	-19,836.11	19,984.20	0.00	0.00	0.00
28,300.00	90.00	272.43	7,697.00	2,432.95	-19,936.02	20,083.90	0.00	0.00	0.00
28,400.00	90.00	272.43	7,697.00	2,437.19	-20,035.93	20,183.60	0.00	0.00	0.00
28,500.00	90.00	272.43	7,697.00	2,441.43	-20,135.84	20,283.30	0.00	0.00	0.00
28,600.00	90.00	272.43	7,697.00	2,445.67	-20,235.75	20,383.00	0.00	0.00	0.00
28,700.00	90.00	272.43	7,697.00	2,449.91	-20,335.66	20,482.70	0.00	0.00	0.00
28,750.30	90.00	272.43	7,697.00	2,452.05	-20,385.91	20,532.85	0.00	0.00	0.00
TD at 28750.30									

Design Targets									
Target Name	Dip Angle (°)	Dip Dir. (°)	TVD (usft)	+N/-S (usft)	+E/-W (usft)	Northing (usft)	Easting (usft)	Latitude	Longitude
- hit/miss target									
- Shape									
LP-SKY RANCH 1BH	0.00	0.00	7,697.00	1,581.33	124.90	1,689,068.98	3,241,360.70	39.722168°N	104.641949°W
- plan hits target center									
- Point									
PBHL-SKY RANCH 1BH	0.00	0.00	7,697.00	2,452.05	-20,385.91	1,689,746.04	3,220,842.72	39.724536°N	104.714867°W
- plan hits target center									
- Point									

Formations						
Measured Depth (usft)	Vertical Depth (usft)	Name	Lithology	Dip (°)	Dip Direction (°)	
24.00	24.00	Denver				
711.64	707.00	Arapahoe				
1,328.25	1,307.00	Laramie-Fox Hills Formation				
2,047.78	2,007.00	Pierre Formation				
2,505.20	2,452.00	Upper Pierre aquifer				
3,157.92	3,087.00	Base of Upper Pierre aquifer				
4,257.78	4,157.00	Larimer ("Parkman") sandstone				
4,391.40	4,287.00	Pierre Formation				
5,501.54	5,367.00	Terry ("Sussex") sandstone				
5,614.61	5,477.00	Pierre Formation				
6,344.42	6,187.00	Hygiene ("Shannon") sandstone				
6,611.68	6,447.00	Pierre Formation				
7,931.41	7,627.00	Sharon Springs Member				
8,221.02	7,697.00	Niobrara Formation				

# Civitas Resources

## Planning Report

<b>Database:</b>	EDM	<b>Local Co-ordinate Reference:</b>	Well SKY RANCH 4-65 10-9-8-7 1BH
<b>Company:</b>	CRESTONE PEAK RESOURCES	<b>TVD Reference:</b>	KB 25' @ 5710.20usft
<b>Project:</b>	ARAPAHOE COUNTY	<b>MD Reference:</b>	KB 25' @ 5710.20usft
<b>Site:</b>	SEC 10-T4S-R65W	<b>North Reference:</b>	True
<b>Well:</b>	SKY RANCH 4-65 10-9-8-7 1BH	<b>Survey Calculation Method:</b>	Minimum Curvature
<b>Wellbore:</b>	OWB		
<b>Design:</b>	PROPOSAL 1		

Plan Annotations				
Measured Depth (usft)	Vertical Depth (usft)	Local Coordinates		Comment
		+N/-S (usft)	+E/-W (usft)	
100.00	100.00	0.00	0.00	Start Build 2.00
769.05	762.99	70.00	33.89	Start 6499.23 hold at 769.05 MD
7,268.28	7,085.78	1,423.81	689.25	Start DLS 10.00 TFO -112.83
8,221.02	7,697.00	1,581.33	124.90	Start 20529.28 hold at 8221.02 MD
28,750.30	7,697.00	2,452.05	-20,385.91	TD at 28750.30