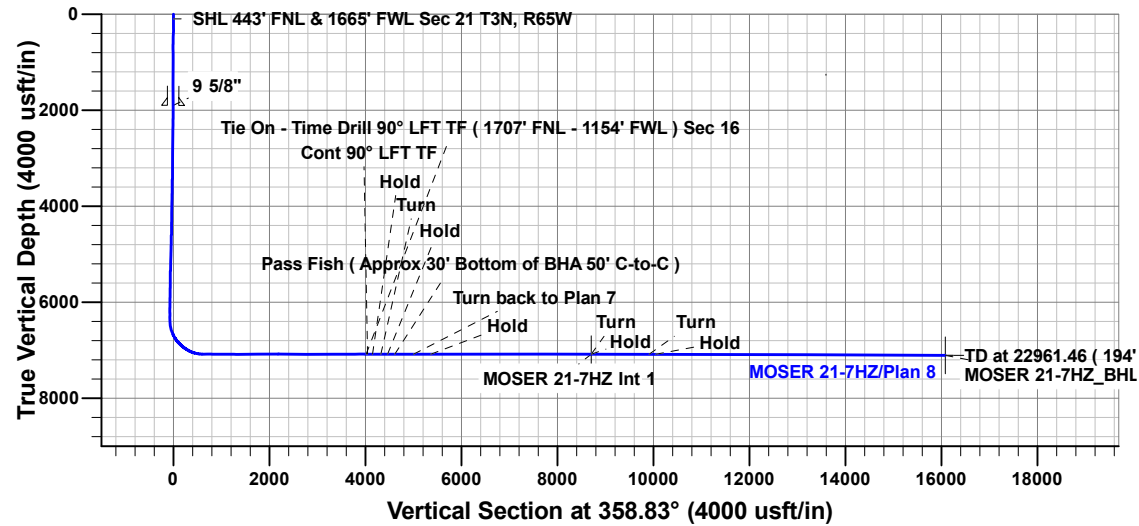


Project: Weld County, CO (UTM-NAD83)
Site: 3N-65W-21 MOSER FED 3-21HZ PAD
Well: MOSER 21-7HZ
Wellbore: STK-1
Design: Plan 8



ANNOTATIONS

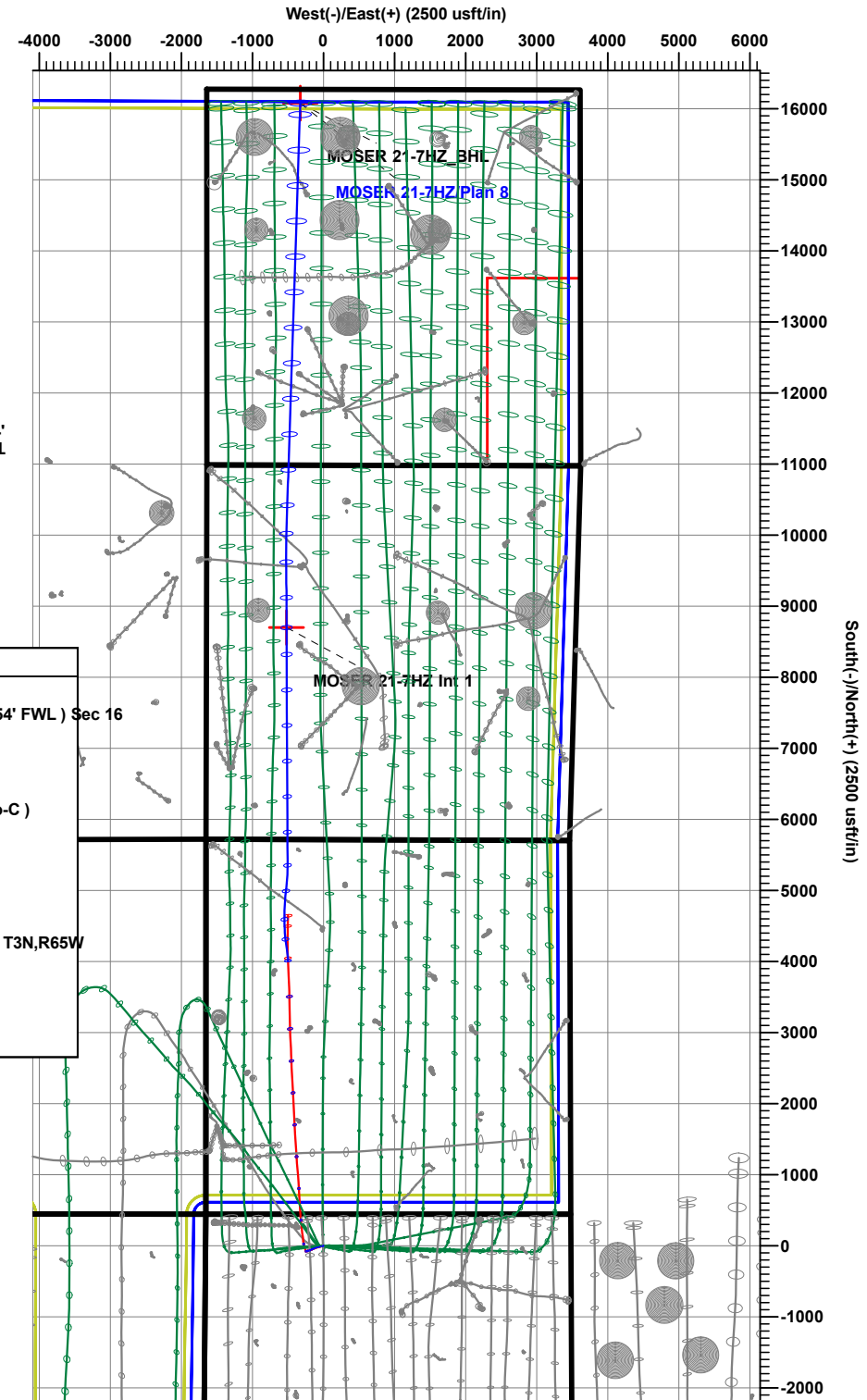
MD	Inc	Azi	TVD	+N/-S	+E/-W	VSect	Departure	Annotation
10885.00	89.85	358.30	7084.12	4009.90	-502.39	4019.33	0.00	Tie On - Time Drill 90° LFT TF (1707' FNL - 1154' FWL) Sec 16
10910.00	89.85	357.30	7084.19	4034.88	-503.35	4044.33	25.00	Cont 90° LFT TF
11015.95	90.00	352.00	7084.33	4140.33	-513.23	4149.96	130.95	Hold
11190.95	90.00	352.00	7084.33	4313.63	-537.59	4323.72	305.95	Turn
11330.95	90.00	359.00	7084.32	4453.11	-548.56	4463.39	445.95	Hold
11480.95	90.00	359.20	7084.31	4603.09	-551.16	4613.39	595.95	Pass Fish (Approx 30' Bottom of BHA 50' C-to-C)
11870.95	90.00	7.00	7084.29	4992.22	-530.09	5002.01	985.95	Turn back to Plan 7
12232.57	90.00	359.77	7084.26	5352.97	-508.76	5362.25	1347.57	Hold
15577.09	90.00	359.77	7084.00	8697.46	-522.33	8706.32	4692.09	Turn
15578.73	90.00	359.80	7084.00	8699.10	-522.33	8707.96	4693.73	Hold
16786.38	90.00	359.80	7084.00	9906.74	-526.55	9915.43	5901.38	Turn
16924.65	89.76	1.86	7084.30	10044.99	-524.55	10053.61	6039.65	Hold
22961.46	89.76	1.86	7110.10	16078.57	-328.65	16081.92	12076.40	TD at 22961.46 (194' FNL - 1317' FWL) Sec 04 T3N,R65W

DESIGN TARGET DETAILS

Name	TVD	+N/-S	+E/-W	Northing	Easting	Latitude	Longitude
MOSER 21-7HZ Int 1	7084.00	8699.10	-522.33	14614603.87	1731479.61	40.2408440	-104.6736853
MOSER 21-7HZ_BHL	7110.10	16078.57	-328.65	14621984.00	1731646.00	40.2611084	-104.6729916

CASING DETAILS

TVD	MD	Name	Size
1900.40	1901.00	9 5/8"	9-5/8



Occidental Petroleum

Weld County, CO (UTM-NAD83)
3N-65W-21 MOSER FED 3-21HZ PAD
MOSER 21-7HZ

STK-1

Plan: Plan 8



Standard Plan Report

11 July, 2023

Total Report Version 1.50

COMPASS 5000.16 Build 97

Planned Survey Report

Company:	Occidental Petroleum	Local Co-ordinate Reference:	Well MOSER 21-7HZ
Project:	Weld County, CO (UTM-NAD83)	TVD Reference:	4845' GL + 29' KB @ 4874.00usft
Site:	3N-65W-21 MOSER FED 3-21HZ PAD	MD Reference:	4845' GL + 29' KB @ 4874.00usft
Well:	MOSER 21-7HZ	North Reference:	True
Wellbore:	STK-1	Survey Calculation Method:	Minimum Curvature
Design:	Plan 8	Database:	EDM 5000.1 Single User Db

Project	Weld County, CO (UTM-NAD83)		
Map System:	Universal Transverse Mercator (US Survey Feet)	System Datum:	Ground Level
Geo Datum:	North American Datum 1983		
Map Zone:	Zone 13N (108 W to 102 W)		

Site						3N-65W-21 MOSER FED 3-21HZ PAD											
Site Position:						Northing:			14,605,907.26 usft			Latitude:			40.2169581		
From:			Map			Easting:			1,731,944.15 usft			Longitude:			-104.6721359		
Position Uncertainty:			0.00 usft			Slot Radius:			13-3/16 "								

Well	MOSER 21-7HZ					
Well Position	+N/-S	0.00 usft	Northing:	14,605,906.76 usft	Latitude:	40.2169558
	+E/-W	0.00 usft	Easting:	1,732,034.12 usft	Longitude:	-104.6718136
Position Uncertainty	3.28 usft		Wellhead Elevation:	usft	Ground Level:	4,845.00 usft
Grid Convergence:	0.21 °					

Wellbore	STK-1					
Magnetics	Model Name	Sample Date	Declination	Dip Angle	Field Strength	
			(°)	(°)	(nT)	
	HDGM2023	7/10/2023	7.77	66.42	51,669.40000000	

Design	Plan 8					
Audit Notes:						
Version:	Phase:	PLAN		Tie On Depth:	10,885.00	
Vertical Section:	Depth From (TVD)	+N/-S	+E/-W	Direction		
	(usft)	(usft)	(usft)	(°)		
	0.00	0.00	0.00		358.83	

Survey Tool Program	Date	7/11/2023				
From	To	Survey (Wellbore)	Tool Name	Description		
(usft)	(usft)					
90.00	1,860.00	Survey #1 (OH)	APC_ISCWSA REV 2 MWD+	Fixed:v2:crustal field declination		
1,954.00	10,885.00	Survey #2 (OH)	APC_ISCWSA REV 2 MWD+	Fixed:v2:Rockies, crustal dec + 3-axis correction		
10,885.00	22,961.46	Plan 8 (STK-1)	APC_ISCWSA REV 2 MWD+	Fixed:v2:Rockies, crustal dec + 3-axis correction		

Planned Survey Report

Company:	Occidental Petroleum	Local Co-ordinate Reference:	Well MOSER 21-7HZ
Project:	Weld County, CO (UTM-NAD83)	TVD Reference:	4845' GL + 29' KB @ 4874.00usft
Site:	3N-65W-21 MOSER FED 3-21HZ PAD	MD Reference:	4845' GL + 29' KB @ 4874.00usft
Well:	MOSER 21-7HZ	North Reference:	True
Wellbore:	STK-1	Survey Calculation Method:	Minimum Curvature
Design:	Plan 8	Database:	EDM 5000.1 Single User Db

Plan Summary

Measured Depth (usft)	Inclination (°)	Azimuth (°)	Vertical Depth (usft)	+N/-S (usft)	+E/-W (usft)	Dogleg Rate (°/100usft)	Build Rate (°/100usft)	Turn Rate (°/100usft)	TFO (°)	Target
10,885.00	89.85	358.30	7,084.12	4,009.90	-502.39	0.00	0.00	0.00	0.00	
10,910.00	89.85	357.30	7,084.19	4,034.88	-503.35	4.00	0.00	-4.00	-90.00	
11,015.95	90.00	352.00	7,084.33	4,140.33	-513.23	5.00	0.14	-5.00	-88.36	
11,190.95	90.00	352.00	7,084.33	4,313.63	-537.59	0.00	0.00	0.00	0.00	
11,330.95	90.00	359.00	7,084.32	4,453.11	-548.56	5.00	0.00	5.00	89.97	
11,470.95	90.00	359.00	7,084.31	4,593.09	-551.01	0.00	0.00	0.00	0.00	
11,870.95	90.00	7.00	7,084.29	4,992.22	-530.09	2.00	0.00	2.00	90.00	
12,232.57	90.00	359.77	7,084.26	5,352.97	-508.76	2.00	0.00	-2.00	-90.00	
15,577.10	90.00	359.77	7,084.00	8,697.46	-522.33	0.00	0.00	0.00	0.00	
15,578.73	90.00	359.80	7,084.00	8,699.10	-522.33	2.00	-0.27	1.98	97.81	MOSER 21-7HZ Int 1
16,786.38	90.00	359.80	7,084.00	9,906.74	-526.55	0.00	0.00	0.00	0.00	
16,924.65	89.76	1.86	7,084.30	10,044.99	-524.55	1.50	-0.18	1.49	96.78	
22,961.46	89.76	1.86	7,110.10	16,078.57	-328.65	0.00	0.00	0.00	0.00	MOSER 21-7HZ_BHL

Planned Survey

Measured Depth (usft)	INC (°)	AZI (°)	Vertical Depth (usft)	Local Coordinates		Map Coordinates		Geo Coordinates		Vertical Section (usft)	Dogleg Rate (°/100usft)	Build Rate (°/100usft)	Turn Rate (°/100usft)
				+N/-S (usft)	+E/-W (usft)	Northing (usft)	Easting (usft)	Latitude (°)	Longitude (°)				
0.00	0.00	0.00	0.00	0.00	0.00	14,605,906.76	1,732,034.12	40.2169558	-104.6718136	0.00	0.00	0.00	0.00
90.00	0.07	292.79	90.00	0.02	-0.05	14,605,906.78	1,732,034.07	40.2169559	-104.6718138	0.02	0.08	0.08	0.00
181.00	0.12	268.53	181.00	0.04	-0.20	14,605,906.80	1,732,033.92	40.2169560	-104.6718143	0.04	0.07	0.05	-26.66
273.00	0.14	293.59	273.00	0.08	-0.40	14,605,906.84	1,732,033.72	40.2169561	-104.6718150	0.09	0.06	0.02	27.24
364.00	1.14	273.89	363.99	0.19	-1.40	14,605,906.94	1,732,032.72	40.2169564	-104.6718186	0.22	1.11	1.10	-21.65
453.00	2.78	251.99	452.94	-0.42	-4.34	14,605,906.33	1,732,029.78	40.2169547	-104.6718291	-0.33	1.99	1.84	-24.61
543.00	3.88	248.80	542.79	-2.19	-9.25	14,605,904.53	1,732,024.88	40.2169498	-104.6718467	-2.00	1.24	1.22	-3.54
633.00	2.40	234.90	632.65	-4.38	-13.63	14,605,902.33	1,732,020.50	40.2169438	-104.6718624	-4.10	1.84	-1.64	-15.44
722.00	0.43	336.01	721.62	-5.15	-15.29	14,605,901.56	1,732,018.85	40.2169417	-104.6718684	-4.83	2.83	-2.21	113.61
812.00	0.72	16.11	811.62	-4.29	-15.27	14,605,902.41	1,732,018.86	40.2169441	-104.6718683	-3.98	0.53	0.32	44.56
901.00	0.68	43.33	900.61	-3.37	-14.76	14,605,903.33	1,732,019.38	40.2169466	-104.6718665	-3.07	0.37	-0.04	30.58
991.00	1.57	102.60	990.60	-3.25	-13.19	14,605,903.46	1,732,020.95	40.2169469	-104.6718608	-2.98	1.51	0.99	65.86
1,081.00	0.82	153.47	1,080.58	-4.10	-11.70	14,605,902.62	1,732,022.44	40.2169446	-104.6718555	-3.86	1.37	-0.83	56.52
1,170.00	0.72	172.40	1,169.57	-5.22	-11.34	14,605,901.50	1,732,022.80	40.2169415	-104.6718542	-4.99	0.31	-0.11	21.27
1,260.00	0.86	196.99	1,259.56	-6.43	-11.46	14,605,900.29	1,732,022.68	40.2169382	-104.6718547	-6.19	0.40	0.16	27.32
1,349.00	1.41	277.84	1,348.55	-6.92	-12.74	14,605,899.79	1,732,021.41	40.2169368	-104.6718592	-6.66	1.72	0.62	90.84
1,439.00	1.28	345.67	1,438.53	-5.79	-14.09	14,605,900.91	1,732,020.06	40.2169399	-104.6718641	-5.50	1.67	-0.14	75.37
1,529.00	1.81	45.61	1,528.50	-3.82	-13.32	14,605,902.89	1,732,020.82	40.2169453	-104.6718613	-3.55	1.79	0.59	66.60
1,618.00	1.97	61.38	1,617.45	-2.11	-10.97	14,605,904.61	1,732,023.16	40.2169501	-104.6718529	-1.88	0.61	0.18	17.72
1,708.00	0.78	92.70	1,707.43	-1.40	-9.00	14,605,905.33	1,732,025.12	40.2169520	-104.6718459	-1.21	1.52	-1.32	34.80
1,797.00	1.39	145.76	1,796.41	-2.32	-7.79	14,605,904.41	1,732,026.34	40.2169495	-104.6718415	-2.16	1.25	0.69	59.62

Planned Survey Report

Company:	Occidental Petroleum	Local Co-ordinate Reference:	Well MOSER 21-7HZ
Project:	Weld County, CO (UTM-NAD83)	TVD Reference:	4845' GL + 29' KB @ 4874.00usft
Site:	3N-65W-21 MOSER FED 3-21HZ PAD	MD Reference:	4845' GL + 29' KB @ 4874.00usft
Well:	MOSER 21-7HZ	North Reference:	True
Wellbore:	STK-1	Survey Calculation Method:	Minimum Curvature
Design:	Plan 8	Database:	EDM 5000.1 Single User Db

Planned Survey

Measured Depth (usft)	INC (°)	AZI (°)	Vertical Depth (usft)	Local Coordinates		Map Coordinates		Geo Coordinates		Vertical Section (usft)	Dogleg Rate (°/100usft)	Build Rate (°/100usft)	Turn Rate (°/100usft)
				+N/-S (usft)	+E/-W (usft)	Northing (usft)	Easting (usft)	Latitude (°)	Longitude (°)				
1,860.00	0.77	191.78	1,859.40	-3.36	-7.45	14,605,903.37	1,732,026.69	40.2169466	-104.6718403	-3.21	1.62	-0.98	73.05
1,954.00	0.88	282.65	1,953.40	-3.82	-8.28	14,605,902.91	1,732,025.85	40.2169453	-104.6718433	-3.65	1.25	0.12	96.67
2,044.00	2.81	265.47	2,043.35	-3.85	-11.15	14,605,902.87	1,732,022.98	40.2169453	-104.6718536	-3.62	2.21	2.14	-19.09
2,135.00	2.54	268.71	2,134.25	-4.07	-15.39	14,605,902.63	1,732,018.74	40.2169447	-104.6718687	-3.75	0.34	-0.30	3.56
2,224.00	4.44	254.46	2,223.08	-5.04	-20.68	14,605,901.65	1,732,013.45	40.2169420	-104.6718877	-4.61	2.33	2.13	-16.01
2,314.00	4.18	253.33	2,312.82	-6.91	-27.18	14,605,899.75	1,732,006.96	40.2169369	-104.6719110	-6.35	0.30	-0.29	-1.26
2,404.00	3.82	252.51	2,402.60	-8.75	-33.18	14,605,897.89	1,732,000.97	40.2169318	-104.6719325	-8.07	0.41	-0.40	-0.91
2,494.00	3.50	255.53	2,492.42	-10.34	-38.70	14,605,896.28	1,731,995.46	40.2169275	-104.6719522	-9.55	0.41	-0.36	3.36
2,584.00	3.46	253.05	2,582.26	-11.82	-43.96	14,605,894.78	1,731,990.20	40.2169234	-104.6719711	-10.92	0.17	-0.04	-2.76
2,675.00	3.24	252.07	2,673.10	-13.41	-49.03	14,605,893.17	1,731,985.14	40.2169190	-104.6719893	-12.41	0.25	-0.24	-1.08
2,767.00	3.17	252.28	2,764.96	-14.98	-53.93	14,605,891.58	1,731,980.24	40.2169147	-104.6720068	-13.88	0.08	-0.08	0.23
2,857.00	3.07	249.37	2,854.82	-16.59	-58.56	14,605,889.95	1,731,975.62	40.2169103	-104.6720234	-15.39	0.21	-0.11	-3.23
2,947.00	3.00	251.65	2,944.70	-18.18	-63.05	14,605,888.35	1,731,971.14	40.2169059	-104.6720394	-16.89	0.16	-0.08	2.53
3,038.00	2.79	255.72	3,035.58	-19.48	-67.45	14,605,887.03	1,731,966.74	40.2169024	-104.6720552	-18.10	0.32	-0.23	4.47
3,128.00	2.34	267.52	3,125.49	-20.10	-71.41	14,605,886.40	1,731,962.78	40.2169007	-104.6720694	-18.63	0.77	-0.50	13.11
3,218.00	1.99	271.77	3,215.43	-20.13	-74.81	14,605,886.35	1,731,959.38	40.2169006	-104.6720816	-18.60	0.43	-0.39	4.72
3,309.00	3.84	259.43	3,306.31	-20.64	-79.39	14,605,885.83	1,731,954.81	40.2168992	-104.6720980	-19.01	2.14	2.03	-13.56
3,398.00	3.53	265.32	3,395.12	-21.41	-85.05	14,605,885.04	1,731,949.15	40.2168971	-104.6721182	-19.67	0.55	-0.35	6.62
3,490.00	4.14	252.37	3,486.92	-22.65	-91.03	14,605,883.78	1,731,943.17	40.2168937	-104.6721397	-20.78	1.15	0.66	-14.08
3,583.00	3.33	257.19	3,579.72	-24.26	-96.87	14,605,882.14	1,731,937.34	40.2168892	-104.6721606	-22.28	0.93	-0.87	5.18
3,675.00	2.75	265.72	3,671.59	-25.02	-101.67	14,605,881.37	1,731,932.54	40.2168871	-104.6721778	-22.94	0.80	-0.63	9.27
3,765.00	4.01	240.94	3,761.44	-26.71	-106.58	14,605,879.66	1,731,927.64	40.2168825	-104.6721954	-24.53	2.11	1.40	-27.53
3,856.00	3.11	242.57	3,852.26	-29.39	-111.55	14,605,876.96	1,731,922.68	40.2168751	-104.6722132	-27.11	1.00	-0.99	1.79
3,945.00	3.15	242.01	3,941.13	-31.65	-115.85	14,605,874.68	1,731,918.39	40.2168689	-104.6722286	-29.28	0.06	0.04	-0.63
4,036.00	2.78	242.78	4,032.00	-33.83	-120.02	14,605,872.48	1,731,914.22	40.2168629	-104.6722435	-31.37	0.41	-0.41	0.85
4,125.00	2.21	247.16	4,120.92	-35.49	-123.52	14,605,870.82	1,731,910.73	40.2168584	-104.6722561	-32.96	0.67	-0.64	4.92
4,215.00	3.27	253.66	4,210.82	-36.88	-127.59	14,605,869.41	1,731,906.67	40.2168546	-104.6722706	-34.27	1.23	1.18	7.22
4,305.00	2.89	254.25	4,300.69	-38.22	-132.23	14,605,868.05	1,731,902.03	40.2168509	-104.6722873	-35.51	0.42	-0.42	0.66
4,396.00	4.04	252.34	4,391.52	-39.82	-137.50	14,605,866.44	1,731,896.77	40.2168465	-104.6723061	-37.00	1.27	1.26	-2.10
4,487.00	3.53	256.25	4,482.32	-41.45	-143.27	14,605,864.78	1,731,891.00	40.2168420	-104.6723268	-38.52	0.63	-0.56	4.30
4,577.00	3.35	257.78	4,572.16	-42.67	-148.53	14,605,863.54	1,731,885.75	40.2168387	-104.6723457	-39.63	0.22	-0.20	1.70
4,669.00	2.88	249.72	4,664.02	-44.04	-153.33	14,605,862.15	1,731,880.96	40.2168349	-104.6723628	-40.90	0.70	-0.51	-8.76
4,759.00	2.42	241.73	4,753.93	-45.72	-157.12	14,605,860.46	1,731,877.17	40.2168303	-104.6723764	-42.50	0.65	-0.51	-8.88
4,849.00	4.14	241.26	4,843.77	-48.19	-161.64	14,605,857.98	1,731,872.66	40.2168235	-104.6723926	-44.87	1.91	1.91	-0.52
4,962.00	3.23	234.44	4,956.54	-52.00	-167.81	14,605,854.14	1,731,866.50	40.2168131	-104.6724147	-48.56	0.89	-0.81	-6.04
5,053.00	4.43	242.16	5,047.34	-55.13	-173.00	14,605,850.99	1,731,861.32	40.2168045	-104.6724333	-51.58	1.43	1.32	8.48
5,144.00	3.87	241.79	5,138.10	-58.22	-178.82	14,605,847.88	1,731,855.52	40.2167960	-104.6724541	-54.56	0.62	-0.62	-0.41
5,234.00	3.23	245.91	5,227.92	-60.69	-183.81	14,605,845.39	1,731,850.54	40.2167892	-104.6724720	-56.93	0.77	-0.71	4.58

Planned Survey Report

Company:	Occidental Petroleum	Local Co-ordinate Reference:	Well MOSER 21-7HZ
Project:	Weld County, CO (UTM-NAD83)	TVD Reference:	4845' GL + 29' KB @ 4874.00usft
Site:	3N-65W-21 MOSER FED 3-21HZ PAD	MD Reference:	4845' GL + 29' KB @ 4874.00usft
Well:	MOSER 21-7HZ	North Reference:	True
Wellbore:	STK-1	Survey Calculation Method:	Minimum Curvature
Design:	Plan 8	Database:	EDM 5000.1 Single User Db

Planned Survey

Measured Depth (usft)	INC (°)	AZI (°)	Vertical Depth (usft)	Local Coordinates +N/-S (usft)	+E/-W (usft)	Map Coordinates Northing (usft)	Easting (usft)	Geo Coordinates Latitude (°)	Longitude (°)	Vertical Section (usft)	Dogleg Rate (°/100usft)	Build Rate (°/100usft)	Turn Rate (°/100usft)
5,326.00	4.79	249.42	5,319.70	-63.10	-189.77	14,605,842.96	1,731,844.58	40.2167826	-104.6724934	-59.21	1.72	1.70	3.82
5,415.00	3.62	257.18	5,408.46	-65.03	-195.99	14,605,841.00	1,731,838.37	40.2167773	-104.6725157	-61.01	1.46	-1.31	8.72
5,505.00	2.70	261.60	5,498.32	-65.97	-200.86	14,605,840.05	1,731,833.51	40.2167747	-104.6725331	-61.85	1.06	-1.02	4.91
5,596.00	3.72	258.21	5,589.17	-66.89	-205.87	14,605,839.11	1,731,828.50	40.2167722	-104.6725510	-62.67	1.14	1.12	-3.73
5,687.00	3.13	257.31	5,680.01	-68.04	-211.18	14,605,837.94	1,731,823.19	40.2167690	-104.6725701	-63.71	0.65	-0.65	-0.99
5,777.00	5.29	253.18	5,769.76	-69.78	-217.55	14,605,836.18	1,731,816.83	40.2167642	-104.6725929	-65.32	2.42	2.40	-4.59
5,866.00	3.71	252.48	5,858.49	-71.83	-224.22	14,605,834.10	1,731,810.16	40.2167586	-104.6726168	-67.24	1.78	-1.78	-0.79
5,956.00	2.26	255.69	5,948.36	-73.15	-228.72	14,605,832.77	1,731,805.67	40.2167550	-104.6726329	-68.46	1.62	-1.61	3.57
6,047.00	3.87	246.09	6,039.23	-74.84	-233.27	14,605,831.06	1,731,801.13	40.2167503	-104.6726492	-70.05	1.85	1.77	-10.55
6,138.00	2.54	241.07	6,130.08	-77.06	-237.84	14,605,828.82	1,731,796.57	40.2167442	-104.6726656	-72.18	1.49	-1.46	-5.52
6,229.00	4.58	285.35	6,220.92	-77.07	-243.11	14,605,828.79	1,731,791.30	40.2167442	-104.6726844	-72.09	3.61	2.24	48.66
6,319.00	3.03	239.84	6,310.74	-77.31	-248.63	14,605,828.53	1,731,785.78	40.2167435	-104.6727042	-72.22	3.63	-1.72	-50.57
6,410.00	2.94	308.70	6,401.64	-77.06	-252.53	14,605,828.76	1,731,781.87	40.2167442	-104.6727182	-71.89	3.71	-0.10	75.67
6,502.00	10.78	347.63	6,492.94	-67.16	-256.23	14,605,838.65	1,731,778.14	40.2167714	-104.6727314	-61.91	9.44	8.52	42.32
6,592.00	17.17	345.79	6,580.23	-46.04	-261.30	14,605,859.75	1,731,773.00	40.2168294	-104.6727496	-40.69	7.12	7.10	-2.04
6,681.00	24.64	343.59	6,663.32	-15.47	-269.77	14,605,890.29	1,731,764.41	40.2169134	-104.6727800	-9.95	8.44	8.39	-2.47
6,771.00	31.47	345.82	6,742.70	25.36	-280.84	14,605,931.08	1,731,753.19	40.2170255	-104.6728196	31.09	7.68	7.59	2.48
6,861.00	39.15	354.26	6,816.13	76.51	-289.46	14,605,982.20	1,731,744.38	40.2171659	-104.6728505	82.41	10.09	8.53	9.38
6,951.00	45.92	353.73	6,882.41	136.98	-295.84	14,606,042.64	1,731,737.78	40.2173320	-104.6728733	143.00	7.53	7.52	-0.59
7,041.00	53.44	351.86	6,940.61	205.00	-304.50	14,606,110.63	1,731,728.87	40.2175188	-104.6729044	211.18	8.50	8.36	-2.08
7,131.00	57.93	354.79	6,991.34	278.80	-313.08	14,606,184.40	1,731,720.01	40.2177214	-104.6729351	285.14	5.67	4.99	3.26
7,222.00	67.13	355.98	7,033.27	359.19	-319.54	14,606,264.77	1,731,713.26	40.2179422	-104.6729582	365.65	10.18	10.11	1.31
7,313.00	75.73	355.42	7,062.22	445.13	-326.01	14,606,350.68	1,731,706.47	40.2181782	-104.6729814	451.70	9.47	9.45	-0.62
7,404.00	82.98	355.53	7,079.02	534.23	-333.06	14,606,439.75	1,731,699.09	40.2184229	-104.6730067	540.92	7.97	7.97	0.12
7,494.00	90.35	355.46	7,084.25	623.73	-340.11	14,606,529.23	1,731,691.70	40.2186687	-104.6730320	630.56	8.19	8.19	-0.08
7,585.00	90.48	359.00	7,083.59	714.61	-344.51	14,606,620.09	1,731,686.97	40.2189182	-104.6730477	721.50	3.89	0.14	3.89
7,676.00	88.71	356.37	7,084.24	805.52	-348.18	14,606,710.99	1,731,682.96	40.2191679	-104.6730609	812.47	3.48	-1.95	-2.89
7,765.00	89.47	356.01	7,085.65	894.31	-354.10	14,606,799.76	1,731,676.72	40.2194117	-104.6730821	901.36	0.94	0.85	-0.40
7,856.00	90.29	355.74	7,085.84	985.08	-360.64	14,606,890.50	1,731,669.84	40.2196609	-104.6731055	992.24	0.95	0.90	-0.30
7,946.00	90.54	355.29	7,085.19	1,074.80	-367.68	14,606,980.19	1,731,662.47	40.2199073	-104.6731307	1,082.09	0.57	0.28	-0.50
8,036.00	88.70	355.93	7,085.79	1,164.53	-374.57	14,607,069.90	1,731,655.25	40.2201537	-104.6731554	1,171.94	2.16	-2.04	0.71
8,125.00	88.62	355.79	7,087.87	1,253.27	-380.99	14,607,158.61	1,731,648.49	40.2203974	-104.6731784	1,260.80	0.18	-0.09	-0.16
8,215.00	88.78	355.75	7,089.91	1,343.00	-387.63	14,607,248.32	1,731,641.53	40.2206438	-104.6732022	1,350.65	0.18	0.18	-0.04
8,304.00	90.61	356.44	7,090.38	1,431.79	-393.69	14,607,337.09	1,731,635.14	40.2208876	-104.6732239	1,439.54	2.20	2.06	0.78
8,394.00	91.82	355.99	7,088.48	1,521.57	-399.63	14,607,426.85	1,731,628.86	40.2211342	-104.6732452	1,529.42	1.43	1.34	-0.50
8,483.00	90.70	357.96	7,086.52	1,610.42	-404.33	14,607,515.68	1,731,623.84	40.2213782	-104.6732620	1,618.35	2.55	-1.26	2.21
8,574.00	90.75	357.18	7,085.37	1,701.33	-408.18	14,607,606.57	1,731,619.65	40.2216278	-104.6732759	1,709.32	0.86	0.05	-0.86

Planned Survey Report

Company:	Occidental Petroleum	Local Co-ordinate Reference:	Well MOSER 21-7HZ
Project:	Weld County, CO (UTM-NAD83)	TVD Reference:	4845' GL + 29' KB @ 4874.00usft
Site:	3N-65W-21 MOSER FED 3-21HZ PAD	MD Reference:	4845' GL + 29' KB @ 4874.00usft
Well:	MOSER 21-7HZ	North Reference:	True
Wellbore:	STK-1	Survey Calculation Method:	Minimum Curvature
Design:	Plan 8	Database:	EDM 5000.1 Single User Db

Planned Survey

Measured Depth (usft)	INC (°)	AZI (°)	Vertical Depth (usft)	Local Coordinates +N/-S (usft)	+E/-W (usft)	Map Coordinates Northing (usft)	Easting (usft)	Geo Coordinates Latitude (°)	Longitude (°)	Vertical Section (usft)	Dogleg Rate (°/100usft)	Build Rate (°/100usft)	Turn Rate (°/100usft)
8,665.00	91.59	357.18	7,083.51	1,792.20	-412.66	14,607,697.42	1,731,614.83	40.2218773	-104.6732919	1,800.26	0.92	0.92	0.00
8,755.00	89.82	357.68	7,082.40	1,882.10	-416.69	14,607,787.31	1,731,610.47	40.2221242	-104.6733064	1,890.22	2.04	-1.97	0.56
8,846.00	90.42	356.75	7,082.21	1,972.99	-421.12	14,607,878.18	1,731,605.71	40.2223738	-104.6733222	1,981.19	1.22	0.66	-1.02
8,935.00	90.69	356.77	7,081.35	2,061.85	-426.15	14,607,967.02	1,731,600.35	40.2226178	-104.6733402	2,070.12	0.30	0.30	0.02
9,025.00	90.81	356.28	7,080.17	2,151.67	-431.60	14,608,056.82	1,731,594.56	40.2228645	-104.6733598	2,160.04	0.56	0.13	-0.54
9,115.00	87.85	357.34	7,081.22	2,241.52	-436.61	14,608,146.65	1,731,589.22	40.2231112	-104.6733777	2,249.97	3.49	-3.29	1.18
9,204.00	87.88	355.00	7,084.54	2,330.25	-442.55	14,608,235.36	1,731,582.96	40.2233548	-104.6733990	2,338.81	2.63	0.03	-2.63
9,294.00	89.65	358.41	7,086.48	2,420.06	-447.72	14,608,325.15	1,731,577.45	40.2236015	-104.6734175	2,428.71	4.27	1.97	3.79
9,384.00	89.58	358.22	7,087.08	2,510.02	-450.36	14,608,415.10	1,731,574.47	40.2238485	-104.6734270	2,518.70	0.22	-0.08	-0.21
9,474.00	89.55	357.71	7,087.77	2,599.96	-453.56	14,608,505.03	1,731,570.95	40.2240955	-104.6734385	2,608.69	0.57	-0.03	-0.57
9,563.00	90.01	357.33	7,088.11	2,688.88	-457.41	14,608,593.93	1,731,566.77	40.2243397	-104.6734523	2,697.66	0.67	0.52	-0.43
9,653.00	89.77	356.93	7,088.28	2,778.76	-461.92	14,608,683.80	1,731,561.93	40.2245865	-104.6734684	2,787.62	0.52	-0.27	-0.44
9,744.00	91.56	358.22	7,087.23	2,869.67	-465.77	14,608,774.69	1,731,557.74	40.2248361	-104.6734822	2,878.59	2.42	1.97	1.42
9,836.00	89.46	357.66	7,086.41	2,961.60	-469.07	14,608,866.61	1,731,554.09	40.2250886	-104.6734941	2,970.57	2.36	-2.28	-0.61
9,927.00	89.97	358.17	7,086.86	3,052.54	-472.39	14,608,957.53	1,731,550.45	40.2253383	-104.6735059	3,061.56	0.79	0.56	0.56
10,017.00	90.49	358.38	7,086.50	3,142.50	-475.09	14,609,047.48	1,731,547.41	40.2255853	-104.6735157	3,151.55	0.62	0.58	0.23
10,108.00	91.61	359.10	7,084.83	3,233.46	-477.10	14,609,138.43	1,731,545.07	40.2258351	-104.6735228	3,242.53	1.46	1.23	0.79
10,199.00	88.61	358.45	7,084.66	3,324.43	-479.04	14,609,229.39	1,731,542.79	40.2260849	-104.6735298	3,333.52	3.37	-3.30	-0.71
10,290.00	89.15	358.88	7,086.43	3,415.38	-481.16	14,609,320.34	1,731,540.33	40.2263347	-104.6735374	3,424.50	0.76	0.59	0.47
10,381.00	89.55	359.36	7,087.47	3,506.37	-482.56	14,609,411.32	1,731,538.60	40.2265845	-104.6735424	3,515.50	0.69	0.44	0.53
10,562.00	91.15	357.36	7,086.36	3,687.28	-487.74	14,609,592.21	1,731,532.75	40.2270813	-104.6735610	3,696.47	1.42	0.88	-1.10
10,653.00	91.62	357.31	7,084.16	3,778.15	-491.97	14,609,683.06	1,731,528.18	40.2273309	-104.6735761	3,787.41	0.52	0.52	-0.05
10,742.00	89.57	357.56	7,083.24	3,867.05	-495.95	14,609,771.95	1,731,523.87	40.2275750	-104.6735904	3,876.38	2.32	-2.30	0.28
10,833.00	89.62	357.01	7,083.88	3,957.95	-500.26	14,609,862.83	1,731,519.22	40.2278246	-104.6736059	3,967.34	0.61	0.05	-0.60
10,885.00	89.85	358.30	7,084.12	4,009.90	-502.39	14,609,914.78	1,731,516.90	40.2279673	-104.6736135	4,019.33	2.51	0.44	2.47
Tie On - Time Drill 90° LFT TF (1707' FNL - 1154' FWL) Sec 16													
10,910.00	89.85	357.30	7,084.19	4,034.88	-503.35	14,609,939.75	1,731,515.85	40.2280359	-104.6736170	4,044.33	4.00	0.00	-4.00
Cont 90° LFT TF													
11,000.00	89.98	352.80	7,084.33	4,124.52	-511.12	14,610,029.36	1,731,507.75	40.2282820	-104.6736448	4,134.11	5.00	0.14	-5.00
11,015.95	90.00	352.00	7,084.33	4,140.33	-513.23	14,610,045.17	1,731,505.58	40.2283254	-104.6736524	4,149.96	5.00	0.14	-5.00
Hold													
11,100.00	90.00	352.00	7,084.33	4,223.56	-524.93	14,610,128.35	1,731,493.57	40.2285540	-104.6736943	4,233.41	0.00	0.00	0.00
11,190.95	90.00	352.00	7,084.33	4,313.63	-537.59	14,610,218.37	1,731,480.58	40.2288013	-104.6737396	4,323.72	0.00	0.00	0.00
Turn													
11,200.00	90.00	352.45	7,084.33	4,322.60	-538.81	14,610,227.33	1,731,479.33	40.2288259	-104.6737440	4,332.70	5.00	0.00	5.00
11,300.00	90.00	357.45	7,084.33	4,422.18	-547.61	14,610,326.88	1,731,470.16	40.2290994	-104.6737755	4,432.44	5.00	0.00	5.00
11,330.95	90.00	359.00	7,084.32	4,453.11	-548.56	14,610,357.81	1,731,469.09	40.2291843	-104.6737790	4,463.39	5.00	0.00	5.00
Hold													
11,400.00	90.00	359.00	7,084.32	4,522.15	-549.77	14,610,426.85	1,731,467.63	40.2293739	-104.6737833	4,532.44	0.00	0.00	0.00

Planned Survey Report

Company:	Occidental Petroleum	Local Co-ordinate Reference:	Well MOSER 21-7HZ
Project:	Weld County, CO (UTM-NAD83)	TVD Reference:	4845' GL + 29' KB @ 4874.00usft
Site:	3N-65W-21 MOSER FED 3-21HZ PAD	MD Reference:	4845' GL + 29' KB @ 4874.00usft
Well:	MOSER 21-7HZ	North Reference:	True
Wellbore:	STK-1	Survey Calculation Method:	Minimum Curvature
Design:	Plan 8	Database:	EDM 5000.1 Single User Db

Planned Survey

Measured Depth (usft)	INC (°)	AZI (°)	Vertical Depth (usft)	Local Coordinates +N/-S (usft)	+E/-W (usft)	Map Coordinates Northing (usft)	Easting (usft)	Geo Coordinates Latitude (°)	Longitude (°)	Vertical Section (usft)	Dogleg Rate (°/100usft)	Build Rate (°/100usft)	Turn Rate (°/100usft)
11,470.95	90.00	359.00	7,084.31	4,593.09	-551.01	14,610,497.78	1,731,466.13	40.2295687	-104.6737877	4,603.39	0.00	0.00	0.00
11,480.95	90.00	359.20	7,084.31	4,603.09	-551.16	14,610,507.78	1,731,465.93	40.2295962	-104.6737883	4,613.39	2.00	0.00	2.00
Pass Fish (Approx 30' Bottom of BHA 50' C-to-C)													
11,500.00	90.00	359.58	7,084.31	4,622.14	-551.37	14,610,526.83	1,731,465.66	40.2296485	-104.6737890	4,632.44	2.00	0.00	2.00
11,600.00	90.00	1.58	7,084.31	4,722.13	-550.35	14,610,626.82	1,731,466.31	40.2299231	-104.6737854	4,732.39	2.00	0.00	2.00
11,700.00	90.00	3.58	7,084.30	4,822.02	-545.85	14,610,726.73	1,731,470.44	40.2301974	-104.6737693	4,832.17	2.00	0.00	2.00
11,800.00	90.00	5.58	7,084.29	4,921.70	-537.86	14,610,826.43	1,731,478.06	40.2304711	-104.6737407	4,931.66	2.00	0.00	2.00
11,870.95	90.00	7.00	7,084.29	4,992.22	-530.09	14,610,896.98	1,731,485.57	40.2306648	-104.6737128	5,002.01	2.00	0.00	2.00
Turn back to Plan 7													
11,900.00	90.00	6.42	7,084.28	5,021.07	-526.70	14,610,925.85	1,731,488.86	40.2307440	-104.6737007	5,030.78	2.00	0.00	-2.00
12,000.00	90.00	4.42	7,084.28	5,120.62	-517.25	14,611,025.43	1,731,497.93	40.2310174	-104.6736668	5,130.12	2.00	0.00	-2.00
12,100.00	90.00	2.42	7,084.27	5,220.43	-511.29	14,611,125.27	1,731,503.53	40.2312915	-104.6736455	5,229.79	2.00	0.00	-2.00
12,200.00	90.00	0.42	7,084.26	5,320.40	-508.81	14,611,225.24	1,731,505.63	40.2315660	-104.6736366	5,329.68	2.00	0.00	-2.00
12,232.57	90.00	359.77	7,084.26	5,352.97	-508.76	14,611,257.81	1,731,505.57	40.2316554	-104.6736364	5,362.25	2.00	0.00	-2.00
Hold													
12,300.00	90.00	359.77	7,084.25	5,420.40	-509.03	14,611,325.24	1,731,505.04	40.2318406	-104.6736374	5,429.67	0.00	0.00	0.00
12,400.00	90.00	359.77	7,084.25	5,520.40	-509.44	14,611,425.23	1,731,504.27	40.2321152	-104.6736389	5,529.65	0.00	0.00	0.00
12,500.00	90.00	359.77	7,084.24	5,620.39	-509.84	14,611,525.23	1,731,503.49	40.2323898	-104.6736403	5,629.64	0.00	0.00	0.00
12,600.00	90.00	359.77	7,084.23	5,720.39	-510.25	14,611,625.23	1,731,502.72	40.2326644	-104.6736418	5,729.63	0.00	0.00	0.00
12,700.00	90.00	359.77	7,084.22	5,820.39	-510.66	14,611,725.22	1,731,501.94	40.2329390	-104.6736432	5,829.61	0.00	0.00	0.00
12,800.00	90.00	359.77	7,084.22	5,920.39	-511.06	14,611,825.22	1,731,501.16	40.2332136	-104.6736447	5,929.60	0.00	0.00	0.00
12,900.00	90.00	359.77	7,084.21	6,020.39	-511.47	14,611,925.22	1,731,500.39	40.2334882	-104.6736462	6,029.59	0.00	0.00	0.00
13,000.00	90.00	359.77	7,084.20	6,120.39	-511.87	14,612,025.22	1,731,499.61	40.2337628	-104.6736476	6,129.57	0.00	0.00	0.00
13,100.00	90.00	359.77	7,084.19	6,220.39	-512.28	14,612,125.21	1,731,498.84	40.2340374	-104.6736491	6,229.56	0.00	0.00	0.00
13,200.00	90.00	359.77	7,084.18	6,320.39	-512.68	14,612,225.21	1,731,498.06	40.2343120	-104.6736506	6,329.55	0.00	0.00	0.00
13,300.00	90.00	359.77	7,084.18	6,420.39	-513.09	14,612,325.21	1,731,497.29	40.2345866	-104.6736520	6,429.53	0.00	0.00	0.00
13,400.00	90.00	359.77	7,084.17	6,520.39	-513.50	14,612,425.20	1,731,496.51	40.2348612	-104.6736535	6,529.52	0.00	0.00	0.00
13,500.00	90.00	359.77	7,084.16	6,620.39	-513.90	14,612,525.20	1,731,495.74	40.2351358	-104.6736549	6,629.51	0.00	0.00	0.00
13,600.00	90.00	359.77	7,084.15	6,720.39	-514.31	14,612,625.20	1,731,494.96	40.2354104	-104.6736564	6,729.49	0.00	0.00	0.00
13,700.00	90.00	359.77	7,084.15	6,820.39	-514.71	14,612,725.19	1,731,494.18	40.2356850	-104.6736579	6,829.48	0.00	0.00	0.00
13,800.00	90.00	359.77	7,084.14	6,920.38	-515.12	14,612,825.19	1,731,493.41	40.2359596	-104.6736593	6,929.47	0.00	0.00	0.00
13,900.00	90.00	359.77	7,084.13	7,020.38	-515.52	14,612,925.19	1,731,492.63	40.2362342	-104.6736608	7,029.45	0.00	0.00	0.00
14,000.00	90.00	359.77	7,084.12	7,120.38	-515.93	14,613,025.19	1,731,491.86	40.2365088	-104.6736622	7,129.44	0.00	0.00	0.00
14,100.00	90.00	359.77	7,084.11	7,220.38	-516.34	14,613,125.18	1,731,491.08	40.2367834	-104.6736637	7,229.43	0.00	0.00	0.00
14,200.00	90.00	359.77	7,084.11	7,320.38	-516.74	14,613,225.18	1,731,490.31	40.2370580	-104.6736652	7,329.41	0.00	0.00	0.00
14,300.00	90.00	359.77	7,084.10	7,420.38	-517.15	14,613,325.18	1,731,489.53	40.2373326	-104.6736666	7,429.40	0.00	0.00	0.00
14,400.00	90.00	359.77	7,084.09	7,520.38	-517.55	14,613,425.17	1,731,488.76	40.2376072	-104.6736681	7,529.39	0.00	0.00	0.00
14,500.00	90.00	359.77	7,084.08	7,620.38	-517.96	14,613,525.17	1,731,487.98	40.2378818	-104.6736695	7,629.37	0.00	0.00	0.00

Planned Survey Report

Company:	Occidental Petroleum	Local Co-ordinate Reference:	Well MOSER 21-7HZ
Project:	Weld County, CO (UTM-NAD83)	TVD Reference:	4845' GL + 29' KB @ 4874.00usft
Site:	3N-65W-21 MOSER FED 3-21HZ PAD	MD Reference:	4845' GL + 29' KB @ 4874.00usft
Well:	MOSER 21-7HZ	North Reference:	True
Wellbore:	STK-1	Survey Calculation Method:	Minimum Curvature
Design:	Plan 8	Database:	EDM 5000.1 Single User Db

Planned Survey

Measured Depth (usft)	INC (°)	AZI (°)	Vertical Depth (usft)	Local Coordinates +N/-S (usft)	+E/-W (usft)	Map Coordinates Northing (usft)	Easting (usft)	Geo Coordinates Latitude (°)	Longitude (°)	Vertical Section (usft)	Dogleg Rate (°/100usft)	Build Rate (°/100usft)	Turn Rate (°/100usft)
14,600.00	90.00	359.77	7,084.08	7,720.38	-518.36	14,613,625.17	1,731,487.20	40.2381564	-104.6736710	7,729.36	0.00	0.00	0.00
14,700.00	90.00	359.77	7,084.07	7,820.38	-518.77	14,613,725.16	1,731,486.43	40.2384310	-104.6736725	7,829.35	0.00	0.00	0.00
14,800.00	90.00	359.77	7,084.06	7,920.38	-519.18	14,613,825.16	1,731,485.65	40.2387057	-104.6736739	7,929.33	0.00	0.00	0.00
14,900.00	90.00	359.77	7,084.05	8,020.38	-519.58	14,613,925.16	1,731,484.88	40.2389803	-104.6736754	8,029.32	0.00	0.00	0.00
15,000.00	90.00	359.77	7,084.05	8,120.37	-519.99	14,614,025.16	1,731,484.10	40.2392549	-104.6736768	8,129.31	0.00	0.00	0.00
15,100.00	90.00	359.77	7,084.04	8,220.37	-520.39	14,614,125.15	1,731,483.33	40.2395295	-104.6736783	8,229.29	0.00	0.00	0.00
15,200.00	90.00	359.77	7,084.03	8,320.37	-520.80	14,614,225.15	1,731,482.55	40.2398041	-104.6736798	8,329.28	0.00	0.00	0.00
15,300.00	90.00	359.77	7,084.02	8,420.37	-521.20	14,614,325.15	1,731,481.78	40.2400787	-104.6736812	8,429.26	0.00	0.00	0.00
15,400.00	90.00	359.77	7,084.01	8,520.37	-521.61	14,614,425.14	1,731,481.00	40.2403533	-104.6736827	8,529.25	0.00	0.00	0.00
15,500.00	90.00	359.77	7,084.01	8,620.37	-522.02	14,614,525.14	1,731,480.22	40.2406279	-104.6736841	8,629.24	0.00	0.00	0.00
15,577.10	90.00	359.77	7,084.00	8,697.46	-522.33	14,614,602.23	1,731,479.63	40.2408396	-104.6736853	8,706.32	0.00	0.00	0.00
Turn													
15,578.73	90.00	359.80	7,084.00	8,699.10	-522.33	14,614,603.87	1,731,479.61	40.2408441	-104.6736853	8,707.96	2.00	-0.27	1.98
Hold													
15,600.00	90.00	359.80	7,084.00	8,720.37	-522.41	14,614,625.14	1,731,479.46	40.2409025	-104.6736856	8,729.22	0.00	0.00	0.00
15,700.00	90.00	359.80	7,084.00	8,820.37	-522.76	14,614,725.13	1,731,478.74	40.2411771	-104.6736868	8,829.21	0.00	0.00	0.00
15,800.00	90.00	359.80	7,084.00	8,920.37	-523.11	14,614,825.13	1,731,478.02	40.2414517	-104.6736881	8,929.20	0.00	0.00	0.00
15,900.00	90.00	359.80	7,084.00	9,020.37	-523.46	14,614,925.13	1,731,477.30	40.2417263	-104.6736893	9,029.18	0.00	0.00	0.00
16,000.00	90.00	359.80	7,084.00	9,120.37	-523.80	14,615,025.13	1,731,476.59	40.2420009	-104.6736906	9,129.17	0.00	0.00	0.00
16,100.00	90.00	359.80	7,084.00	9,220.37	-524.15	14,615,125.12	1,731,475.87	40.2422755	-104.6736919	9,229.15	0.00	0.00	0.00
16,200.00	90.00	359.80	7,084.00	9,320.37	-524.50	14,615,225.12	1,731,475.15	40.2425501	-104.6736931	9,329.14	0.00	0.00	0.00
16,300.00	90.00	359.80	7,084.00	9,420.37	-524.85	14,615,325.12	1,731,474.43	40.2428247	-104.6736944	9,429.12	0.00	0.00	0.00
16,400.00	90.00	359.80	7,084.00	9,520.36	-525.20	14,615,425.12	1,731,473.71	40.2430993	-104.6736956	9,529.11	0.00	0.00	0.00
16,500.00	90.00	359.80	7,084.00	9,620.36	-525.55	14,615,525.11	1,731,472.99	40.2433739	-104.6736969	9,629.10	0.00	0.00	0.00
16,600.00	90.00	359.80	7,084.00	9,720.36	-525.90	14,615,625.11	1,731,472.27	40.2436485	-104.6736981	9,729.08	0.00	0.00	0.00
16,700.00	90.00	359.80	7,084.00	9,820.36	-526.25	14,615,725.11	1,731,471.55	40.2439231	-104.6736994	9,829.07	0.00	0.00	0.00
16,786.38	90.00	359.80	7,084.00	9,906.74	-526.55	14,615,811.48	1,731,470.93	40.2441603	-104.6737005	9,915.43	0.00	0.00	0.00
Turn													
16,800.00	89.98	0.00	7,084.00	9,920.36	-526.57	14,615,825.11	1,731,470.86	40.2441977	-104.6737006	9,929.05	1.50	-0.18	1.49
16,900.00	89.80	1.49	7,084.20	10,020.35	-525.27	14,615,925.10	1,731,471.79	40.2444723	-104.6736959	10,028.99	1.50	-0.18	1.49
16,924.65	89.76	1.86	7,084.30	10,044.99	-524.55	14,615,949.74	1,731,472.42	40.2445399	-104.6736933	10,053.61	1.50	-0.18	1.49
Hold													
17,000.00	89.76	1.86	7,084.62	10,120.30	-522.10	14,616,025.06	1,731,474.59	40.2447468	-104.6736846	10,128.86	0.00	0.00	0.00
17,100.00	89.76	1.86	7,085.05	10,220.25	-518.86	14,616,125.02	1,731,477.47	40.2450212	-104.6736729	10,228.72	0.00	0.00	0.00
17,200.00	89.76	1.86	7,085.47	10,320.19	-515.61	14,616,224.97	1,731,480.34	40.2452957	-104.6736613	10,328.57	0.00	0.00	0.00
17,300.00	89.76	1.86	7,085.90	10,420.14	-512.37	14,616,324.93	1,731,483.22	40.2455701	-104.6736497	10,428.43	0.00	0.00	0.00
17,400.00	89.76	1.86	7,086.33	10,520.09	-509.12	14,616,424.89	1,731,486.09	40.2458446	-104.6736381	10,528.29	0.00	0.00	0.00
17,500.00	89.76	1.86	7,086.76	10,620.03	-505.88	14,616,524.85	1,731,488.97	40.2461190	-104.6736265	10,628.15	0.00	0.00	0.00

Planned Survey Report

Company:	Occidental Petroleum	Local Co-ordinate Reference:	Well MOSER 21-7HZ
Project:	Weld County, CO (UTM-NAD83)	TVD Reference:	4845' GL + 29' KB @ 4874.00usft
Site:	3N-65W-21 MOSER FED 3-21HZ PAD	MD Reference:	4845' GL + 29' KB @ 4874.00usft
Well:	MOSER 21-7HZ	North Reference:	True
Wellbore:	STK-1	Survey Calculation Method:	Minimum Curvature
Design:	Plan 8	Database:	EDM 5000.1 Single User Db

Planned Survey

Measured Depth (usft)	INC (°)	AZI (°)	Vertical Depth (usft)	Local Coordinates +N/-S (usft)	+E/-W (usft)	Map Coordinates Northing (usft)	Easting (usft)	Geo Coordinates Latitude (°)	Longitude (°)	Vertical Section (usft)	Dogleg Rate (°/100usft)	Build Rate (°/100usft)	Turn Rate (°/100usft)
17,600.00	89.76	1.86	7,087.18	10,719.98	-502.63	14,616,624.81	1,731,491.84	40.2463935	-104.6736148	10,728.01	0.00	0.00	0.00
17,700.00	89.76	1.86	7,087.61	10,819.92	-499.39	14,616,724.76	1,731,494.72	40.2466680	-104.6736032	10,827.87	0.00	0.00	0.00
17,800.00	89.76	1.86	7,088.04	10,919.87	-496.14	14,616,824.72	1,731,497.59	40.2469424	-104.6735916	10,927.73	0.00	0.00	0.00
17,900.00	89.76	1.86	7,088.46	11,019.82	-492.90	14,616,924.68	1,731,500.47	40.2472169	-104.6735800	11,027.59	0.00	0.00	0.00
18,000.00	89.76	1.86	7,088.89	11,119.76	-489.65	14,617,024.64	1,731,503.34	40.2474913	-104.6735683	11,127.45	0.00	0.00	0.00
18,100.00	89.76	1.86	7,089.32	11,219.71	-486.41	14,617,124.59	1,731,506.22	40.2477658	-104.6735567	11,227.31	0.00	0.00	0.00
18,200.00	89.76	1.86	7,089.75	11,319.66	-483.16	14,617,224.55	1,731,509.09	40.2480403	-104.6735451	11,327.17	0.00	0.00	0.00
18,300.00	89.76	1.86	7,090.17	11,419.60	-479.92	14,617,324.51	1,731,511.97	40.2483147	-104.6735335	11,427.03	0.00	0.00	0.00
18,400.00	89.76	1.86	7,090.60	11,519.55	-476.67	14,617,424.47	1,731,514.84	40.2485892	-104.6735218	11,526.89	0.00	0.00	0.00
18,500.00	89.76	1.86	7,091.03	11,619.50	-473.43	14,617,524.43	1,731,517.72	40.2488636	-104.6735102	11,626.74	0.00	0.00	0.00
18,600.00	89.76	1.86	7,091.46	11,719.44	-470.18	14,617,624.38	1,731,520.59	40.2491381	-104.6734986	11,726.60	0.00	0.00	0.00
18,700.00	89.76	1.86	7,091.88	11,819.39	-466.94	14,617,724.34	1,731,523.47	40.2494125	-104.6734870	11,826.46	0.00	0.00	0.00
18,800.00	89.76	1.86	7,092.31	11,919.34	-463.69	14,617,824.30	1,731,526.35	40.2496870	-104.6734754	11,926.32	0.00	0.00	0.00
18,900.00	89.76	1.86	7,092.74	12,019.28	-460.45	14,617,924.26	1,731,529.22	40.2499615	-104.6734637	12,026.18	0.00	0.00	0.00
19,000.00	89.76	1.86	7,093.17	12,119.23	-457.20	14,618,024.21	1,731,532.10	40.2502359	-104.6734521	12,126.04	0.00	0.00	0.00
19,100.00	89.76	1.86	7,093.59	12,219.17	-453.96	14,618,124.17	1,731,534.97	40.2505104	-104.6734405	12,225.90	0.00	0.00	0.00
19,200.00	89.76	1.86	7,094.02	12,319.12	-450.71	14,618,224.13	1,731,537.85	40.2507848	-104.6734289	12,325.76	0.00	0.00	0.00
19,300.00	89.76	1.86	7,094.45	12,419.07	-447.47	14,618,324.09	1,731,540.72	40.2510593	-104.6734172	12,425.62	0.00	0.00	0.00
19,400.00	89.76	1.86	7,094.88	12,519.01	-444.22	14,618,424.04	1,731,543.60	40.2513337	-104.6734056	12,525.48	0.00	0.00	0.00
19,500.00	89.76	1.86	7,095.30	12,618.96	-440.98	14,618,524.00	1,731,546.47	40.2516082	-104.6733940	12,625.34	0.00	0.00	0.00
19,600.00	89.76	1.86	7,095.73	12,718.91	-437.73	14,618,623.96	1,731,549.35	40.2518827	-104.6733824	12,725.20	0.00	0.00	0.00
19,700.00	89.76	1.86	7,096.16	12,818.85	-434.49	14,618,723.92	1,731,552.22	40.2521571	-104.6733707	12,825.06	0.00	0.00	0.00
19,800.00	89.76	1.86	7,096.59	12,918.80	-431.24	14,618,823.88	1,731,555.10	40.2524316	-104.6733591	12,924.91	0.00	0.00	0.00
19,900.00	89.76	1.86	7,097.01	13,018.75	-428.00	14,618,923.83	1,731,557.97	40.2527060	-104.6733475	13,024.77	0.00	0.00	0.00
20,000.00	89.76	1.86	7,097.44	13,118.69	-424.75	14,619,023.79	1,731,560.85	40.2529805	-104.6733359	13,124.63	0.00	0.00	0.00
20,100.00	89.76	1.86	7,097.87	13,218.64	-421.51	14,619,123.75	1,731,563.72	40.2532550	-104.6733242	13,224.49	0.00	0.00	0.00
20,200.00	89.76	1.86	7,098.30	13,318.59	-418.26	14,619,223.71	1,731,566.60	40.2535294	-104.6733126	13,324.35	0.00	0.00	0.00
20,300.00	89.76	1.86	7,098.72	13,418.53	-415.02	14,619,323.66	1,731,569.47	40.2538039	-104.6733010	13,424.21	0.00	0.00	0.00
20,400.00	89.76	1.86	7,099.15	13,518.48	-411.77	14,619,423.62	1,731,572.35	40.2540783	-104.6732894	13,524.07	0.00	0.00	0.00
20,500.00	89.76	1.86	7,099.58	13,618.42	-408.53	14,619,523.58	1,731,575.23	40.2543528	-104.6732777	13,623.93	0.00	0.00	0.00
20,600.00	89.76	1.86	7,100.01	13,718.37	-405.28	14,619,623.54	1,731,578.10	40.2546272	-104.6732661	13,723.79	0.00	0.00	0.00
20,700.00	89.76	1.86	7,100.43	13,818.32	-402.04	14,619,723.50	1,731,580.98	40.2549017	-104.6732545	13,823.65	0.00	0.00	0.00
20,800.00	89.76	1.86	7,100.86	13,918.26	-398.79	14,619,823.45	1,731,583.85	40.2551762	-104.6732429	13,923.51	0.00	0.00	0.00
20,900.00	89.76	1.86	7,101.29	14,018.21	-395.55	14,619,923.41	1,731,586.73	40.2554506	-104.6732312	14,023.37	0.00	0.00	0.00
21,000.00	89.76	1.86	7,101.72	14,118.16	-392.30	14,620,023.37	1,731,589.60	40.2557251	-104.6732196	14,123.23	0.00	0.00	0.00
21,100.00	89.76	1.86	7,102.14	14,218.10	-389.06	14,620,123.33	1,731,592.48	40.2559995	-104.6732080	14,223.08	0.00	0.00	0.00
21,200.00	89.76	1.86	7,102.57	14,318.05	-385.81	14,620,223.28	1,731,595.35	40.2562740	-104.6731964	14,322.94	0.00	0.00	0.00

Planned Survey Report

Company:	Occidental Petroleum	Local Co-ordinate Reference:	Well MOSER 21-7HZ
Project:	Weld County, CO (UTM-NAD83)	TVD Reference:	4845' GL + 29' KB @ 4874.00usft
Site:	3N-65W-21 MOSER FED 3-21HZ PAD	MD Reference:	4845' GL + 29' KB @ 4874.00usft
Well:	MOSER 21-7HZ	North Reference:	True
Wellbore:	STK-1	Survey Calculation Method:	Minimum Curvature
Design:	Plan 8	Database:	EDM 5000.1 Single User Db

Planned Survey

Measured Depth (usft)	INC (°)	AZI (°)	Vertical Depth (usft)	Local Coordinates +N/-S (usft)	+E/-W (usft)	Map Coordinates Northing (usft)	Easting (usft)	Geo Coordinates Latitude (°)	Longituge (°)	Vertical Section (usft)	Dogleg Rate (°/100usft)	Build Rate (°/100usft)	Turn Rate (°/100usft)
21,300.00	89.76	1.86	7,103.00	14,418.00	-382.57	14,620,323.24	1,731,598.23	40.2565484	-104.6731847	14,422.80	0.00	0.00	0.00
21,400.00	89.76	1.86	7,103.43	14,517.94	-379.32	14,620,423.20	1,731,601.10	40.2568229	-104.6731731	14,522.66	0.00	0.00	0.00
21,500.00	89.76	1.86	7,103.85	14,617.89	-376.08	14,620,523.16	1,731,603.98	40.2570974	-104.6731615	14,622.52	0.00	0.00	0.00
21,600.00	89.76	1.86	7,104.28	14,717.84	-372.83	14,620,623.12	1,731,606.85	40.2573718	-104.6731499	14,722.38	0.00	0.00	0.00
21,700.00	89.76	1.86	7,104.71	14,817.78	-369.59	14,620,723.07	1,731,609.73	40.2576463	-104.6731382	14,822.24	0.00	0.00	0.00
21,800.00	89.76	1.86	7,105.14	14,917.73	-366.34	14,620,823.03	1,731,612.60	40.2579207	-104.6731266	14,922.10	0.00	0.00	0.00
21,900.00	89.76	1.86	7,105.56	15,017.67	-363.10	14,620,922.99	1,731,615.48	40.2581952	-104.6731150	15,021.96	0.00	0.00	0.00
22,000.00	89.76	1.86	7,105.99	15,117.62	-359.85	14,621,022.95	1,731,618.36	40.2584696	-104.6731033	15,121.82	0.00	0.00	0.00
22,100.00	89.76	1.86	7,106.42	15,217.57	-356.61	14,621,122.90	1,731,621.23	40.2587441	-104.6730917	15,221.68	0.00	0.00	0.00
22,200.00	89.76	1.86	7,106.85	15,317.51	-353.36	14,621,222.86	1,731,624.11	40.2590186	-104.6730801	15,321.54	0.00	0.00	0.00
22,300.00	89.76	1.86	7,107.27	15,417.46	-350.12	14,621,322.82	1,731,626.98	40.2592930	-104.6730685	15,421.40	0.00	0.00	0.00
22,400.00	89.76	1.86	7,107.70	15,517.41	-346.87	14,621,422.78	1,731,629.86	40.2595675	-104.6730568	15,521.25	0.00	0.00	0.00
22,500.00	89.76	1.86	7,108.13	15,617.35	-343.63	14,621,522.73	1,731,632.73	40.2598419	-104.6730452	15,621.11	0.00	0.00	0.00
22,600.00	89.76	1.86	7,108.56	15,717.30	-340.38	14,621,622.69	1,731,635.61	40.2601164	-104.6730336	15,720.97	0.00	0.00	0.00
22,700.00	89.76	1.86	7,108.98	15,817.25	-337.14	14,621,722.65	1,731,638.48	40.2603908	-104.6730220	15,820.83	0.00	0.00	0.00
22,800.00	89.76	1.86	7,109.41	15,917.19	-333.89	14,621,822.61	1,731,641.36	40.2606653	-104.6730103	15,920.69	0.00	0.00	0.00
22,900.00	89.76	1.86	7,109.84	16,017.14	-330.65	14,621,922.57	1,731,644.23	40.2609398	-104.6729987	16,020.55	0.00	0.00	0.00
22,961.46	89.76	1.86	7,110.10	16,078.57	-328.65	14,621,984.00	1,731,646.00	40.2611084	-104.6729916	16,081.92	0.00	0.00	0.00
TD at 22961.46 (194' FNL - 1317' FWL) Sec 04 T3N,R65W													

Design Targets

Target Name - hit/miss target - Shape	Dip Angle (°)	Dip Dir. (°)	TVD (usft)	+N/-S (usft)	+E/-W (usft)	Northing (usft)	Easting (usft)	Latitude	Longitude
MOSER 21-7HZ Int 1 - plan hits target center - Point	0.00	0.00	7,084.00	8,699.10	-522.33	14,614,603.87	1,731,479.61	40.2408441	-104.6736853
MOSER 21-7HZ_BHL - plan hits target center - Point	0.00	0.00	7,110.10	16,078.57	-328.65	14,621,984.00	1,731,646.00	40.2611084	-104.6729916

Casing Points

Measured Depth (usft)	Vertical Depth (usft)	Name	Casing Diameter (")	Hole Diameter (")
1,901.00	1,900.40	9 5/8"	9-5/8	13-1/2

Planned Survey Report

Company: Occidental Petroleum	Local Co-ordinate Reference: Well MOSER 21-7HZ
Project: Weld County, CO (UTM-NAD83)	TVD Reference: 4845' GL + 29' KB @ 4874.00usft
Site: 3N-65W-21 MOSER FED 3-21HZ PAD	MD Reference: 4845' GL + 29' KB @ 4874.00usft
Well: MOSER 21-7HZ	North Reference: True
Wellbore: STK-1	Survey Calculation Method: Minimum Curvature
Design: Plan 8	Database: EDM 5000.1 Single User Db

Formations

Measured Depth (usft)	Vertical Depth (usft)	Name	Lithology	Dip (°)	Dip Direction (°)
1,071.42	1,071.00	Fox Hills			
3,867.76	3,864.00	Parkman			
4,256.25	4,252.00	Sussex			
6,933.37	6,870.00	Sharon Springs			
7,013.84	6,924.00	Niobrara			
7,093.67	6,971.00	Niobrara B Chalk			
7,342.96	7,069.00	Niobrara C Chalk			

Plan Annotations

Measured Depth (usft)	Vertical Depth (usft)	Local Coordinates		Comment
		+N/-S (usft)	+E/-W (usft)	
10,885	7084	4010	-502	Tie On - Time Drill 90° LFT TF (1707' FNL - 1154' FWL) Sec 16
10,910	7084	4035	-503	Cont 90° LFT TF
11,016	7084	4140	-513	Hold
11,191	7084	4314	-538	Turn
11,331	7084	4453	-549	Hold
11,481	7084	4603	-551	Pass Fish (Approx 30' Bottom of BHA 50' C-to-C)
11,871	7084	4992	-530	Turn back to Plan 7
12,233	7084	5353	-509	Hold
15,577	7084	8697	-522	Turn
15,579	7084	8699	-522	Hold
16,786	7084	9907	-527	Turn
16,925	7084	10,045	-525	Hold
22,961	7110	16,079	-329	TD at 22961.46 (194' FNL - 1317' FWL) Sec 04 T3N,R65W

Checked By: _____	Approved By: _____	Date: _____
-------------------	--------------------	-------------