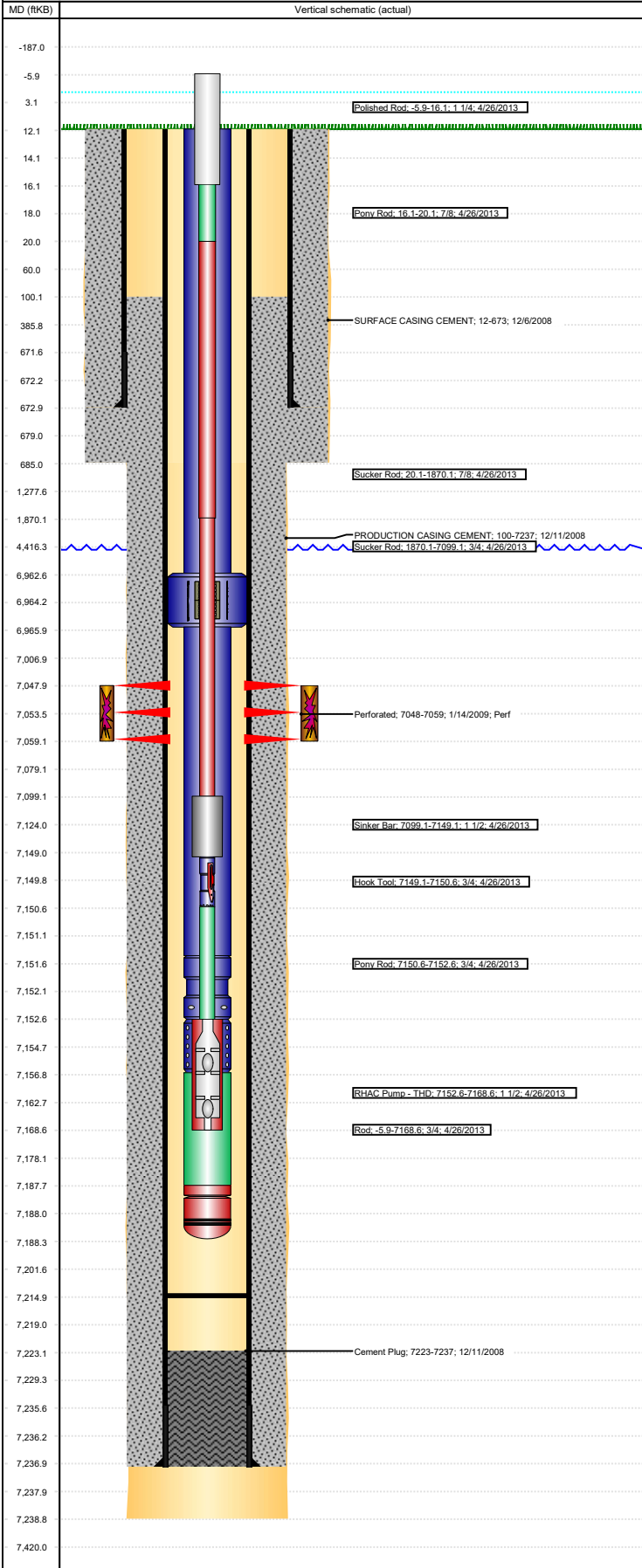




# P&A Wellbore For State

Well Name: SHABLE 14-23

Land, Original Hole, 7/3/2023 8:13:35 AM



## Well Header

Surface UWI 0512328034	Business Unit Rockies	Gov Auth Dist	Prod Tree Loc Land
Orig. KB to Gnd (ft) 12.00	Original Spud Date 12/5/2008	Abandon Date	Well Sub-Status TA (AT SURFACE)
High... N			

Comment

## Surface Location (Congressional)

Qtr 3 SW	Qtr 4 NW	Section 14	Twnshp 7	Twnsh... N	Range 64	Rng E... W	Latitude (°) 40.57505	Longitude (°) -104.52314
-------------	-------------	---------------	-------------	---------------	-------------	---------------	--------------------------	-----------------------------

## Wellbore Sections

Section Des	Hole Size (in)	Act Top (ftKB)	Act Btm (ftKB)
SURFACE	12 1/4	12.0	685.0
PRODUCTION	7 7/8	685.0	7,239.0

## Casing Strings

Csg Des	Run Date	OD (in)	Wt/Len (lb/ft)	Grade	Top Depth (MD) (ftKB)	Set Depth (MD) (ftKB)
Surface	12/6/2008	8 5/8	24.00	J-55	12	673
Production Casing	12/11/2008	4 1/2	11.60	M-80	12	7237

## Cement

Des	Start Date	Top (ftKB)	Btm (ftKB)
SURFACE CASING CEMENT	12/6/2008	12.0	673.0
PRODUCTION CASING CEMENT	12/11/2008	100.0	7,237.0
Cement Plug	12/11/2008	7,223.0	7,237.0

## Zone Statuses

Zone Name	Status Date	Status	Fluid Type	Job	Prod Method
CODELL	10/19/2016	SI			
CODELL	5/9/2017	SI			

## Perforation Data

Linked Zone	Explosive Type	Entered Shot Total	Top (ftKB)	Btm (ftKB)	Date
CODELL, Original Hole		44	7,048.0	7,059.0	1/14/2009

## Stimulation Intervals

Zone	Start Date	Top (ftKB)	Btm (ftKB)
CODELL, Original Hole	1/15/2009	7,048.0	7,059.0

## Other In Hole

Run Date	Des	Make	OD (in)	Top (ftKB)	Btm (ftKB)

## Logs

Date	Type	Depth Top (MD) (ftKB)	Btm (ftKB)
12/9/2008	COMPENSATED DENSITY	3,590	7,231.0
12/9/2008	INDUCTION	700	7,251.0
4/24/2013	GYRO	12	7,200.0
4/24/2013	GYRO	12	7,200.0

## Plug Back Total Depths

Date	Type	Com	PBTD (ftKB)
12/11/2008	GUIDE SHOE		7,223
4/24/2013	FILL	WIRELINE TAG / CORE-TECH.	7,215