



Service Order #: 530136

Date: 3/15/2023

Well Name:	Location:	County:	St:	API#	
BERRY P 08-18D		WELD	CO		
Formation:	Cement Via:	Type Of Service:	Well Type/Age:	AFE#:	PO#:
	TUBING	SQUEEZE			

Customer: OCCIDENTAL

Remarks: H2O TEMP 68*, PH 7, CHLORIDES 21 PPM
100 SKS, 20.8 BBLS, DISPLACE 14.5 BBLS
ETOC 4081' - 3987'

Customer Rep: JARROD

PH:

WELLBORE DATA

Type	Size	Weight	Depth	Volume
Surface Casing:				
Production Casing:	4.5	11.6	4,081.0	0
Intermediate:	0	0	0.0	0
Drill Pipe:	0	0	0.0	0
Tubing:	2.375	4.7	4,051.0	

OTHER DATA

BHT	Max PSI	Total Depth

Packer or Retainer Type/Depth:

RETAINER	4,051
----------	-------

Type	Size	Depth (Top)	Depth (Bot)	Volume
Liner:				0
Open Hole:	0.0			

Perf Depths:	#	TotalPerf
4,081.0	0	
	0	
	0	

TIME	PUMP RATES		DENSITY (lb/gl)	PRESS (psi)	STG TOT (bbls)	TOTAL (bbls)	REMARKS
	WATER (gpm)	PUMP (bpm)					
13:40	0	0.0	0.00	4119	41.3	61.1	PSI TEST
13:46	52	0.3	15.95	0	0.1	0.1	START CMT
13:51	55	0.0	15.86	0	14.5	14.5	OFF LINE / STING IN
13:52	55	0.0	15.76	0	14.5	14.5	RESTART CMT
13:55	0	2.0	19.00	1907	20.8	20.8	END CMT / START DISPLACEMENT
14:03	0	0.5	14.33	2070	14.5	35.4	OFF LINE

Summary

Max Fl. Rate	Avg Fl. Rate	Max Psi	Avg Psi
2.0	3.6	4,148	1,657

Customer Acknowledgement:

Service Rating: Cementer:

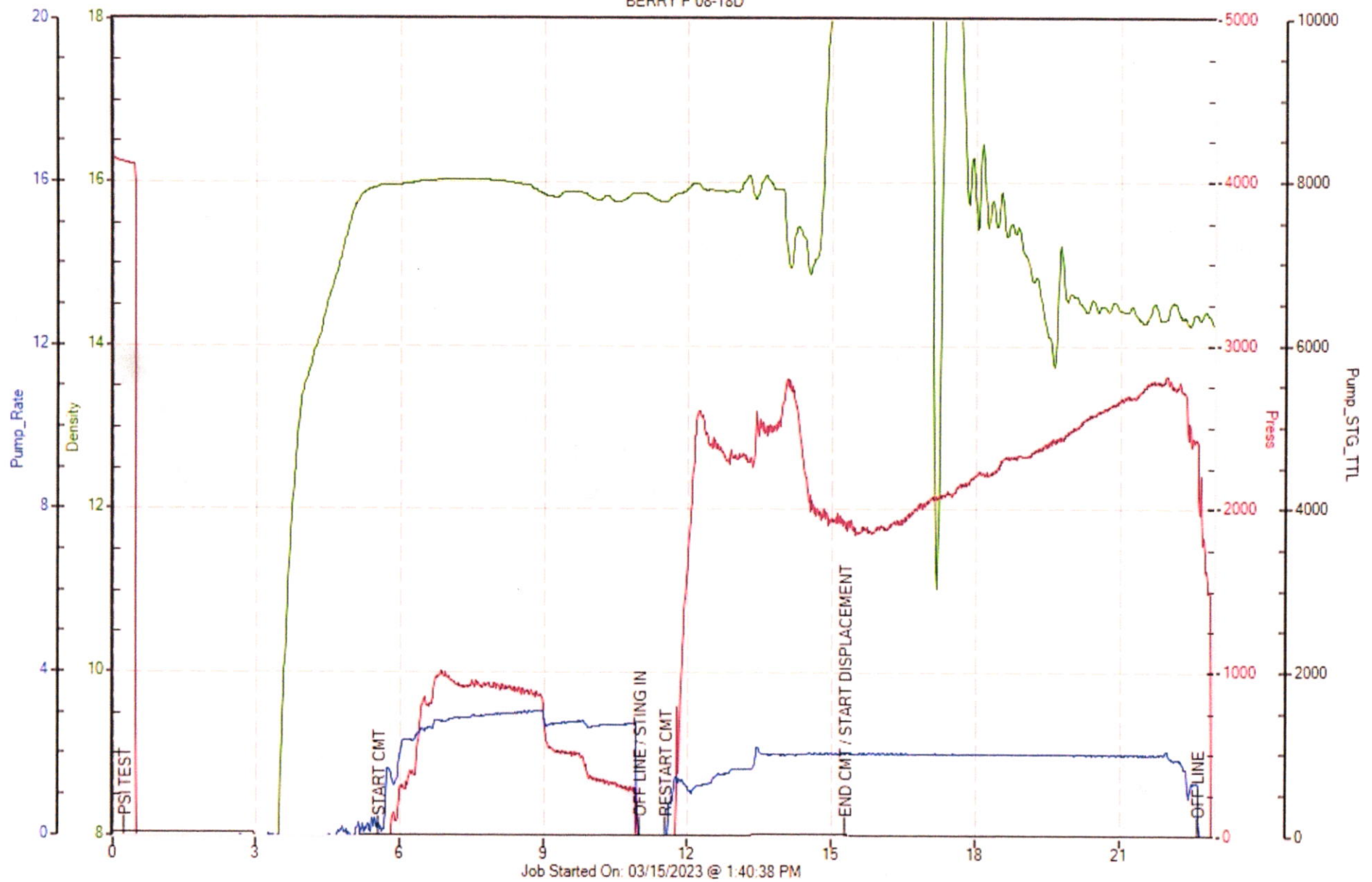
- ☐ Satisfactory
☐ Unsatisfactory

BOHLEN

PRODUCTS USED

SUSSEX AGM, CLASS G CMT, 2% GYPSUM, .4% C16A, .25% C17,
.3% C35, 1.17 YIELD, 5.08 GAL/SKS, 15.8 LBS/GA

OCCIDENTAL
BERRY P 08-18D





Service Order #: 531096

Date: 3/16/2023

Well Name:	Location:	County:	St:	API#	
BERRY P 08-18D		WELD	CO		
Formation:	Cement Via:	Type Of Service:	Well Type/Age:	AFE#:	PO#:
	TUBING	SQUEEZE			

Customer: OCCIDENTAL

Remarks: H2O TEMP 71*, PH 7, CHLORIDES 12 PPM
100 SKS, 21.5 BBLs, DISPLACE 8.4 BBLs
ETOC CASING 2484' - 2386

Customer Rep: JARROD B.

PH:

WELLBORE DATA

Type	Size	Weight	Depth	Volume
Surface Casing:				
Production Casing:	4.5	11.6	2,484.0	0
Intermediate:	0	0	0.0	0
Drill Pipe:	0	0	0.0	0
Tubing:	2.375	4.7	2,450.0	

Type	Size	Depth (Top)	Depth (Bot)	Volume
Liner:				0
Open Hole:	0.0			

OTHER DATA

BHT	Max PSI	Total Depth

Packer or Retainer Type/Depth:

RETAINER	2,450
----------	-------

Perf Depths: # TotalPerf

2,484.0	2,480.0	2	
		0	
		0	

TIME	PUMP RATES		DENSITY	PRESS	STG TOT	TOTAL	REMARKS
	WATER (gpm)	PUMP (bpm)	(lb/gal)	(psi)	(bbls)	(bbls)	
12:55	0	0.0	0.00	2822	40.8	60.6	PSI TEST
13:04	0	0.0	16.14	6	0.4	0.4	START H2O SPACER
13:06	0	0.8	16.14	74	1.7	1.7	GOT CIRCULATION / START CMT
13:10	50	0.0	16.04	6	8.2	9.9	OFF LINE / STING IN
13:11	0	0.0	15.86	0	8.2	9.9	RESTART CMT
13:17	0	2.1	0.00	676	21.5	23.2	END CMT / START DISPLACEMENT
13:21	0	0.0	0.00	772	8.4	31.7	OFF LINE

Summary

Max Fl. Rate	Avg Fl. Rate	Max Psi	Avg Psi
2.1	3.5	2,833	697

Customer Acknowledgement:

Service Rating:

☐ Satisfactory☐ Unsatisfactory

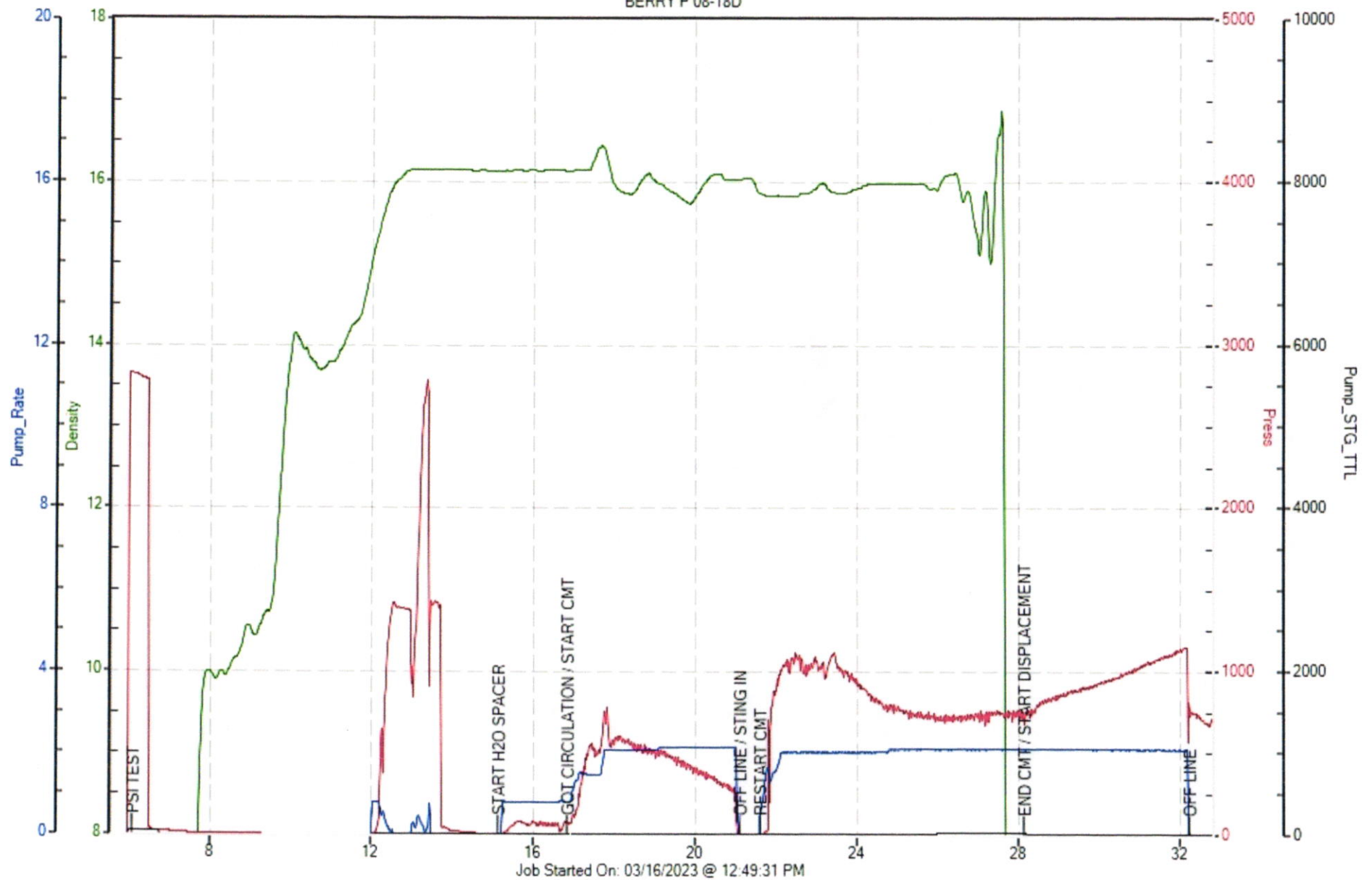
Cementer:

BOHLEN

PRODUCTS USED

UPPER AGM, CLASS G CMT, 4% GYPSUM, 1.5% CaCl, .4% C16A,
1.21 YIELD, 5.18 GAL/SKS, 15.8 LBS/GA

OCCIDENTAL
BERRY P 08-18D





Service Order #: 532933

Date: 3/20/2023

Well Name:	Location:	County:	St:	API#	
BERRY P 08-18D		WELD	CO		
Formation:	Cement Via:	Type Of Service:	Well Type/Age:	AFE#:	PO#:
	TUBING	PLUG			

Customer: OCCIDENTAL

Remarks: H2O TEMP 74*, PH 7, CHLORIDES 39 PPM
325 SKS, 70.1 BBLS, DISPLACE 3.5 BBLS
ETOC 1500' - 950'

Customer Rep: JARROD

PH:

WELLBORE DATA

Type	Size	Weight	Depth	Volume
Surface Casing:				
Production Casing:	0	0	0.0	0
Intermediate:	0	0	0.0	0
Drill Pipe:	0	0	0.0	0
Tubing:	2.375	4.7	1,500.0	

Type	Size	Depth (Top)	Depth (Bot)	Volume
Liner:				0
Open Hole:	7.9		1,500.0	

OTHER DATA

BHT	Max PSI	Total Depth

Packer or Retainer Type/Depth:

--	--

Perf Depths: # TotalPerf

		0	
		0	
		0	

TIME	PUMP RATES		DENSITY	PRESS	STG TOT	TOTAL	REMARKS
	WATER (gpm)	PUMP (bpm)	(lb/gal)	(psi)	(bbbls)	(bbbls)	
13:23	0	0.0	0.00	1650	41.5	61.3	PSI TEST
13:26	0	0.0	11.27	0	0.0	0.0	H2O SPACER
13:27	51	0.8	15.81	55	1.3	1.3	GOT CIRCULATION / START CMT
13:47	80	3.9	15.86	859	70.1	71.6	END CMT / START DISPLACEMENT
13:49	0	0.0	0.00	114	3.6	80.2	OFF LINE

Summary

Max Fl. Rate	Avg Fl. Rate	Max Psi	Avg Psi
3.9	3.2	1,650	523

Customer Acknowledgement:

Service Rating:

Cementer:

☐ Satisfactory

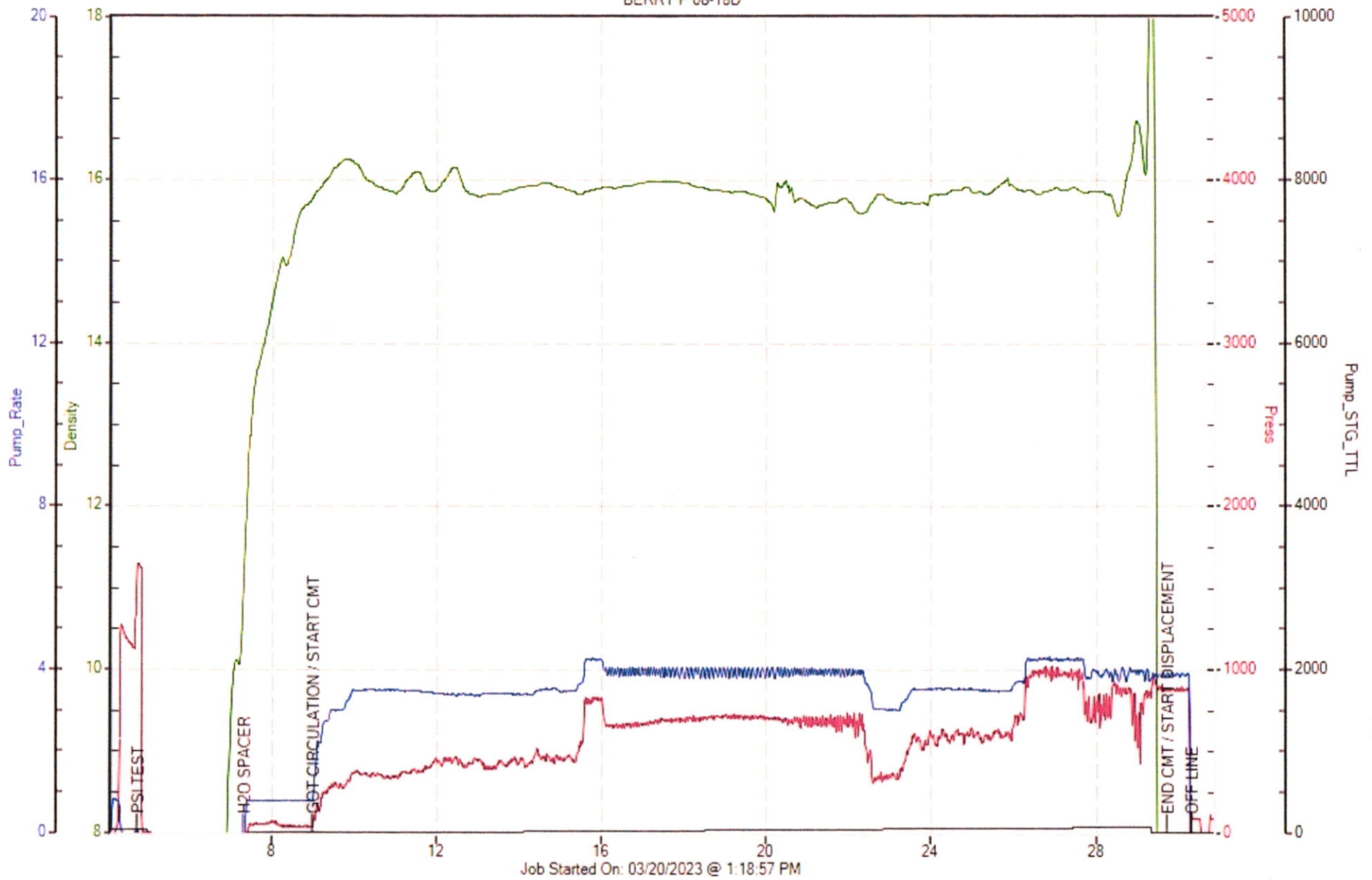
BOHLEN

☐ Unsatisfactory

PRODUCTS USED

UPPER AGM, CLASS G CMT, 4% GYPSUM, 1.5% CaCl, .4% C16A,
1.21 YIELD, 5.18 GAL/SKS, 15.8 LBS/GAL

OCCIDENTAL
BERRY P 08-18D





Service Order #: 532934

Date: 3/21/2023

Well Name:	Location:	County:	St:	API#	
BERRY P 08-18D		WELD	CO		
Formation:	Cement Via:	Type Of Service:	Well Type/Age:	AFE#:	PO#:
	TUBING	PLUG			

Customer: OCCIDENTAL

Remarks: H2O TEMP 74*, PH 7, CHLORIDES 31 PPM
120 SKS, 25.8 BBLs, DISPLACE 1 BBL
ETOC 623' - 285'

Customer Rep: JARROD B.

PH:

WELLBORE DATA

Type	Size	Weight	Depth	Volume
Surface Casing:	8.625	24	487.0	
Production Casing:	0	0	0.0	0
Intermediate:	0	0	0.0	0
Drill Pipe:	0	0	0.0	0
Tubing:	2.375	4.7	623.0	

OTHER DATA

BHT	Max PSI	Total Depth

Packer or Retainer Type/Depth:

Type	Size	Depth (Top)	Depth (Bot)	Volume
Liner:				0
Open Hole:	7.9	487.0	623.0	

Perf Depths: # TotalPerf

		0	
		0	
		0	

TIME	PUMP RATES		DENSITY	PRESS	STG TOT	TOTAL	REMARKS
	WATER (gpm)	PUMP (bpm)	(lb/gal)	(psi)	(bbls)	(bbls)	
13:16	0	0.0	0.00	1280	41.4	61.1	PSI TEST
13:20	0	0.0	0.00	0	0.6	0.6	START MUD FLUSH
13:24	0	3.5	15.96	226	10.2	10.2	END MUD FLUSH / START SPACER
13:25	0	2.9	15.90	97	5.0	15.2	END SPACER / START CMT
13:33	0	3.4	2.47	366	25.8	41.1	END CMT / START DISPLACEMENT
13:33	0	0.0	0.00	0	1.1	42.7	OFF LINE

Summary

Max Fl. Rate	Avg Fl. Rate	Max Psi	Avg Psi
3.5	4.1	1,343	231

Customer Acknowledgement:

Service Rating:

Cementer:

☐ Satisfactory
☐ Unsatisfactory

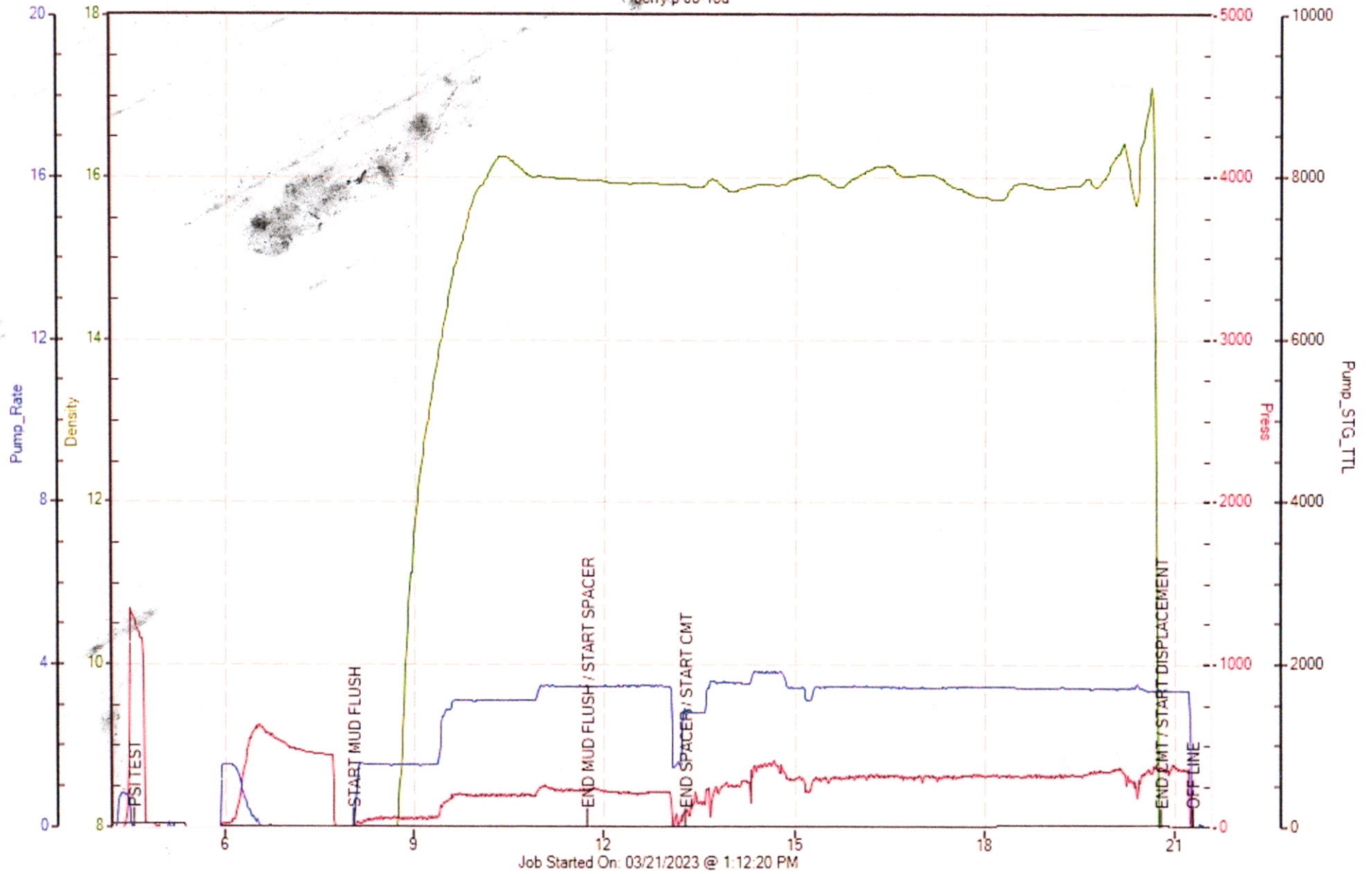
BOHLEN

PRODUCTS USED

UPPER AGM, CLASS G CMT, 4% GYPSUM, 1.5% CaCl, .4% C16A,
1.21 YIELD, 5.18 GAL/SKS, 15.8 LBS/GAL

OCCIDENTAL

berry p 08-18d





Service Order #: 532937

Date: 3/22/2023

Well Name:	Location:	County:	St:	API#	
BERRY P 08-18D		WELD	CO	0512331088	
Formation:	Cement Via:	Type Of Service:	Well Type/Age:	AFE#:	PO#:
	TUBING	PLUG			

Customer: OCCIDENTAL

Remarks: H2O TEMP 74*, PH 7, CHLORIDES 47 PPM
93 SKS, 20 BBLs
ETOC 260' - SURFACE

Customer Rep: JARROD B.

PH:

WELLBORE DATA

Type	Size	Weight	Depth	Volume
Surface Casing:	8.625	24	260.0	
Production Casing:	0	0	0.0	0
Intermediate:	0	0	0.0	0
Drill Pipe:	0	0	0.0	0
Tubing:	2.375	4.7	260.0	

OTHER DATA

BHT	Max PSI	Total Depth

Packer or Retainer Type/Depth:

--	--

Type	Size	Depth (Top)	Depth (Bot)	Volume
Liner:				0
Open Hole:	0.0			

Perf Depths:	#	TotalPerf
	0	
	0	
	0	

TIME	PUMP RATES		DENSITY	PRESS	STG TOT	TOTAL	REMARKS
	WATER (gpm)	PUMP (bpm)	(lb/gal)	(psi)	(bbls)	(bbls)	
9:17	0	0.2	0.00	861	0.2	0.2	PSI TEST
9:17	0	0.0	0.00	17	0.2	0.2	H2O SPACER
9:18	0	0.0	0.00	12	1.0	1.0	GOT CIRCULATION / OFF LINE
9:22	41	0.4	16.01	12	0.0	1.0	START CMT
9:32	0	0.1	0.01	27	20.0	21.0	CMT TO SURFACE / OFF LINE

Summary

Max Fl. Rate	Avg Fl. Rate	Max Psi	Avg Psi
0.4	1.8	861	96

Customer Acknowledgement:

Service Rating:

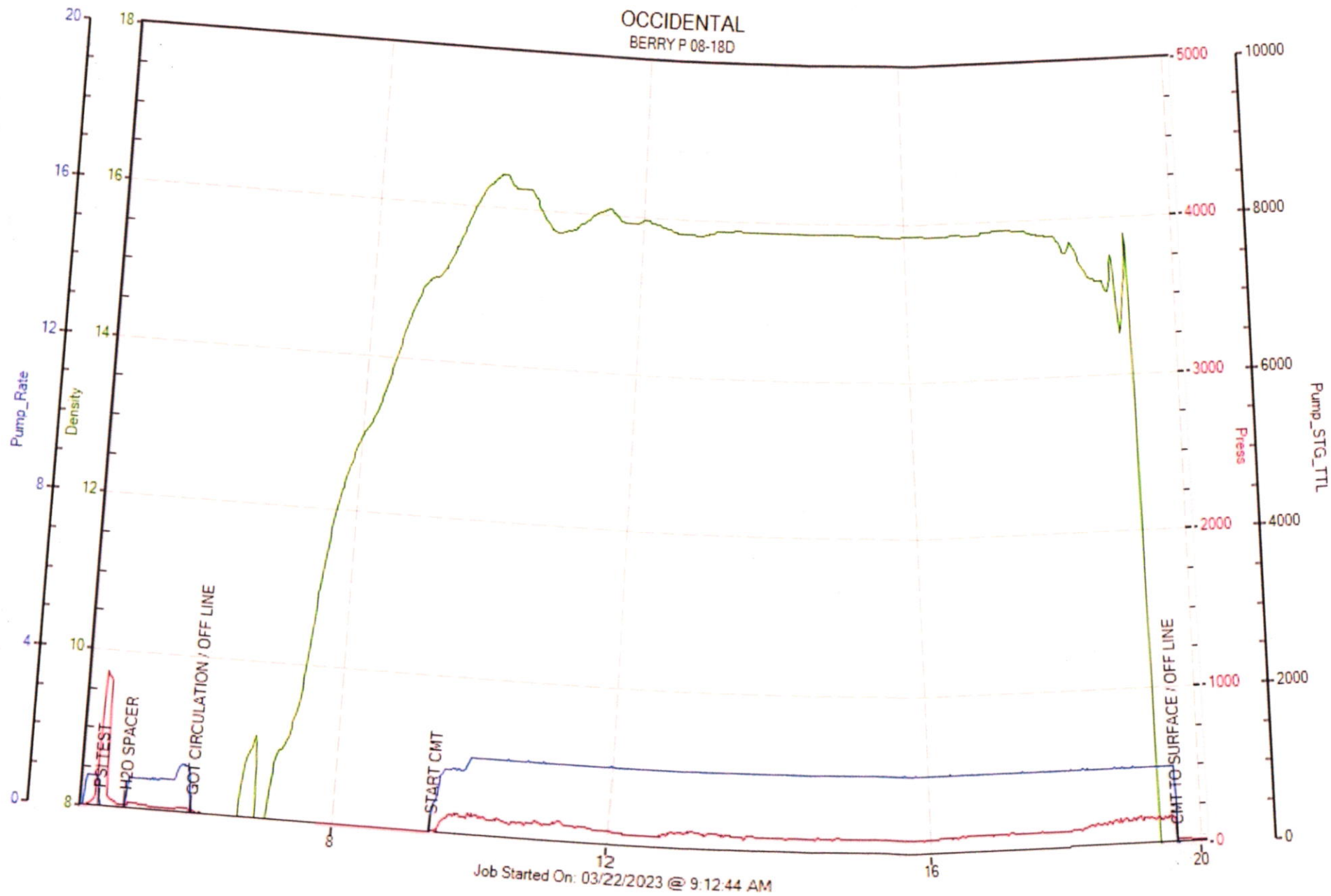
Cementer:

- ☐ Satisfactory
☐ Unsatisfactory

BOHLEN

PRODUCTS USED

SURFACE AGM, CLASS G CMT, 4% GYPSUM, 2% CaCl, .4% C16A,
LATEX 1.21 YIELD, 5.18 GAL/SKS, 15.8 LBS/GAL



03222301RES-9WD3ZM2.acddb1