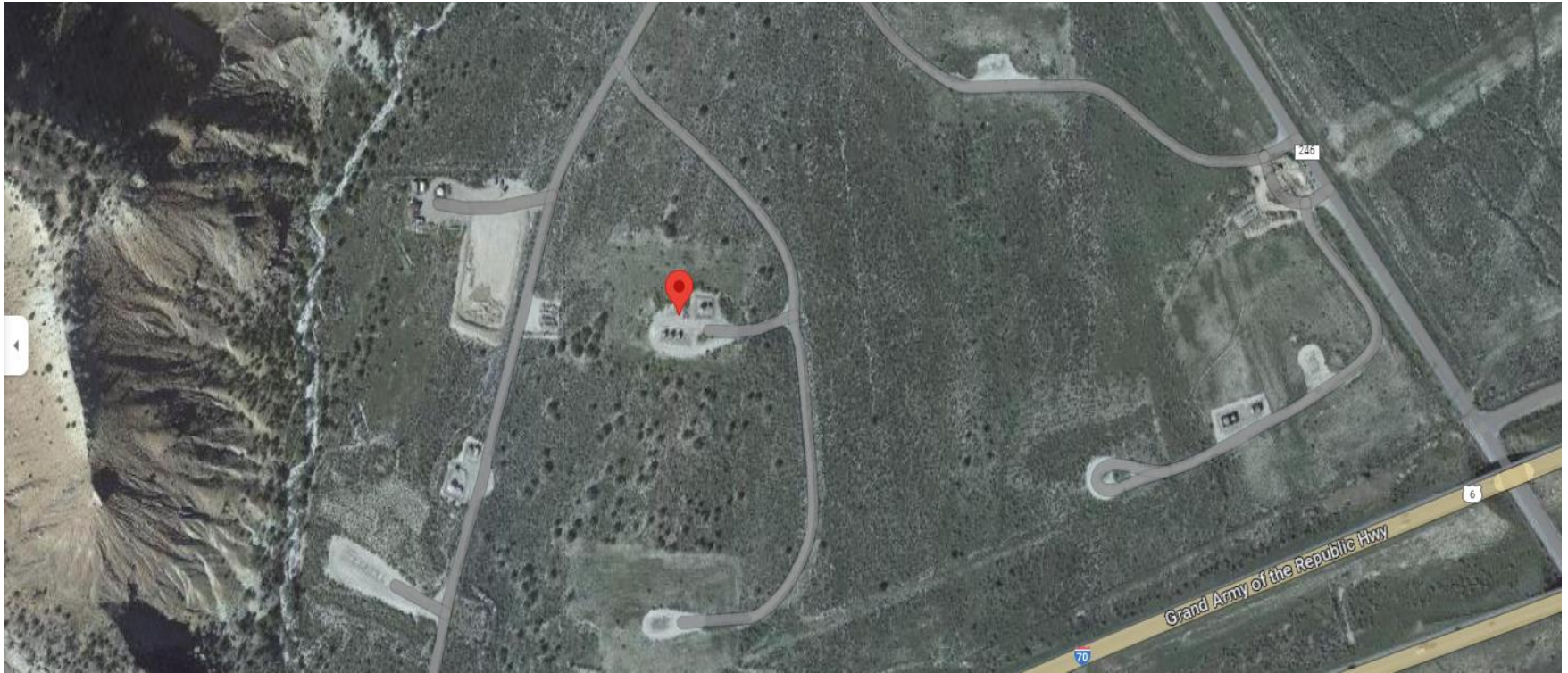


Storm Water Management and Erosion control
Location Name: TEP ROCKY MOUNTAIN LLC CLOUGH RMV 92-29 Pad
Location ID: 324090



Location Overview: Location is within High Priority/Density habitat areas & within close proximity to NSO Habitat area & Bald Eagle Nest & Roost sites. Location is approximately 265 yards from a drainage that contributes to the Colorado River.

Section/Township/Range: 29 6S94W



COLORADO
Energy & Carbon Management
Commission
Department of Natural Resources

Storm water Management and Erosion control
Location Name: TEP ROCKY MOUNTAIN LLC CLOUGH RMV 92-29 Pad
Location ID: 324090



North West corner of location.



North East corner of location.



South West corner of location.



South East corner of location.