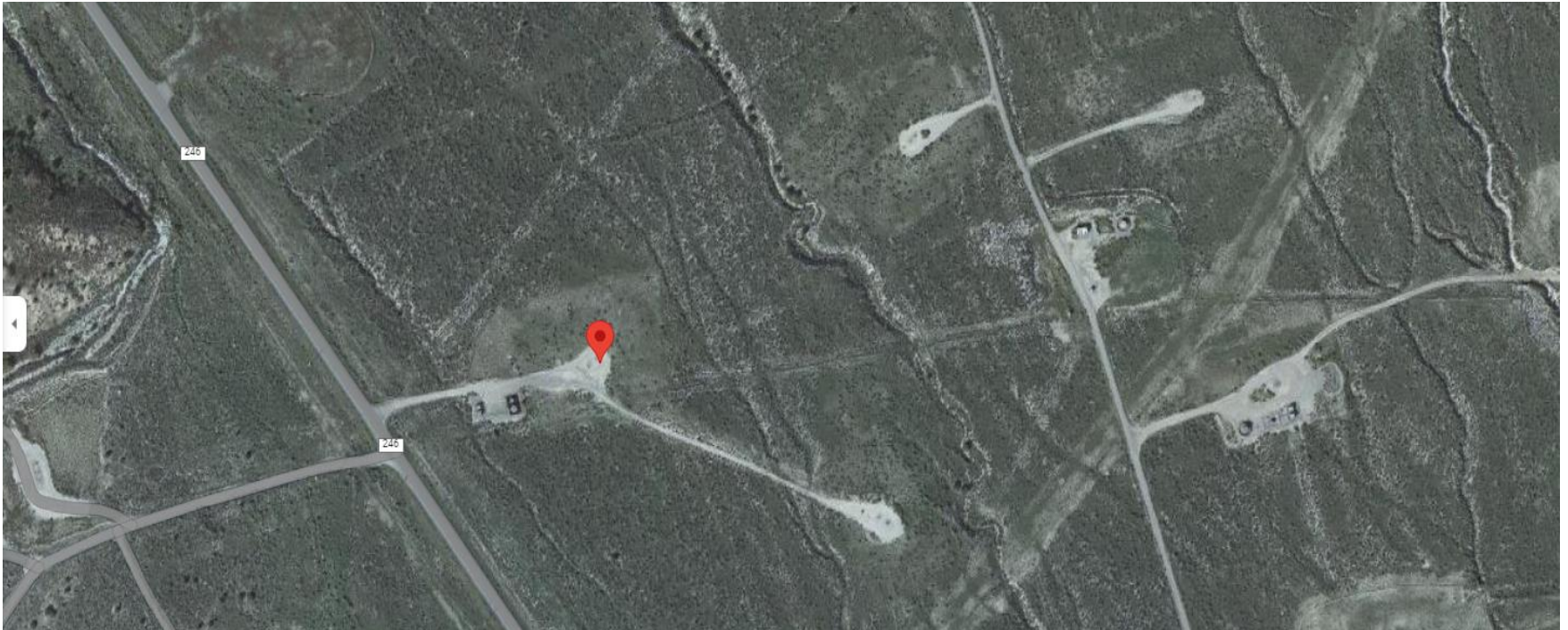


Storm Water Management and Erosion control
Location Name: TEP ROCKY MOUNTAIN LLC RWF 534-20 Pad
Location ID: 335295



Location Overview: Location is within High Priority/Density Habitat areas & within close proximity to Bald Eagle Nest & Roost Sites. Location is approximately 168 yards from a drainage/creek that contributes to the Colorado River.

Section/Township/Range: 20 6S94W



Storm water Management and Erosion control
Location Name: TEP ROCKY MOUNTAIN LLC RWF 534-20 Pad
Location ID: 335295



North West corner of location.



North East corner of location.



South West corner of location.



South East corner of location.