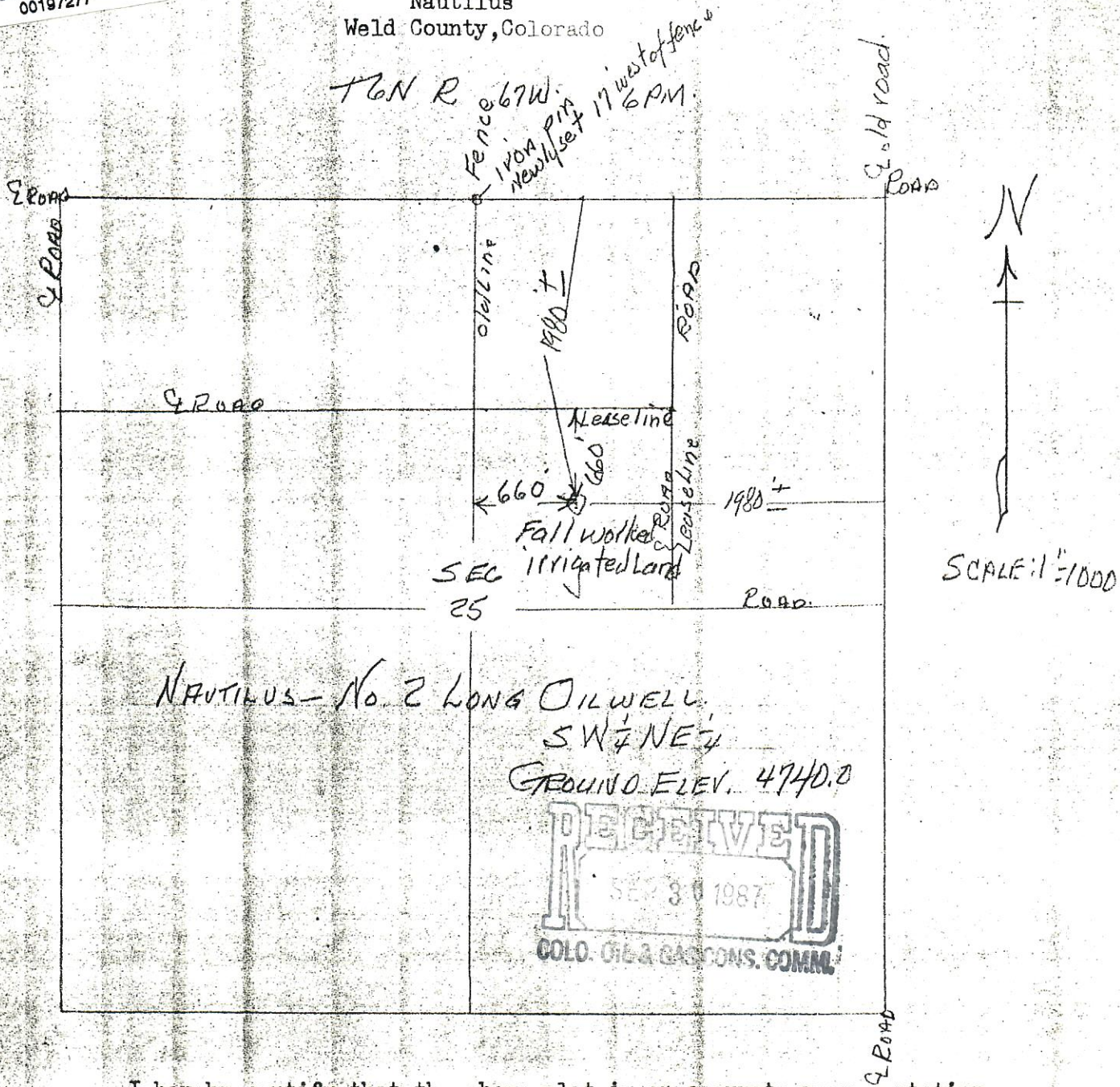




CERTIFICATE OF SURVEY
for
Nautilus
Weld County, Colorado



I hereby certify that the above plat is an accurate representation of a correct survey showing the location of Nautilus -No.2 Long Oilwell in ~~SW 1/4~~ Sec.25 T6N R67W 6PM. The elevation of the ground at the stake is 4740.0 feet above sea level from U.S.G.S. Bench Mark.

Fort Morgan, Colorado
Sept. 19, 1987

Becky Robinson
Registered Professional Engineer
State of Colorado