

**RADIAL BOND TOOL  
GAMMA RAY  
CCL**

Company CIVITAS  
Well DF RANCH 1161-08-14  
Field GROVER  
County WELD State CO

Location: API #: 05-123-31105  
LAT 40.938040 LONG -104.222350  
SE/NE  
Permanent Datum SEC 8 TWP 11N RGE 61W  
Log Measured From GL KB 13' Elevation 5286'  
Drilling Measured From KB KB Elevation 5299'  
D.F. 5298'  
G.L. 5296'

Date MAY 17 2023  
Run Number ONE  
Depth Driller 7950'  
Depth Logger 2450'  
Bottom Logged Interval 2446'  
Top Log Interval SURFACE  
Open Hole Size 7.875"  
Type Fluid WATER  
Density / Viscosity N/A  
Max. Recorded Temp. N/A  
Estimated Cement Top N/A  
Time Well Ready ON ARRIVAL  
Time Logger on Bottom N/A  
Equipment Number 3814  
Location GREELEY  
Recorded By MICHAEL RAMSEY  
Witnessed By RICK SHEETS

Borehole Record		Tubing Record					
Run Number	Bit	From	To	Size	Weight	From	To

Casing Record		Top		Bottom	
Surface String	Size	Wgt/Ft	Top	Bottom	
Surface String	8.625"	24#	SURFACE	1104'	
Production String	4.5"	11.6#	SURFACE	7934'	
Liner					

<<< Fold Here >>>

All interpretations are opinions based on inferences from electrical or other measurements and we cannot and do not guarantee the accuracy or correctness of any interpretation, and we shall not, except in the case of gross or willful negligence on our part, be liable or responsible for any loss, costs, damages, or expenses incurred or sustained by anyone resulting from any interpretation made by any of our officers, agents or employees. These interpretations are also subject to our general terms and conditions set out in our current Price Schedule.

Comments

RAN RBL TO VERIFY CEMENT BOND  
WELL LOADED UPON ARRIVAL  
LOG NOT CORRELATED  
NO FREE PIPE BELOW SURFACE CASING  
RAN PREVIOUS 4.5" 11.6# CALIBRATION

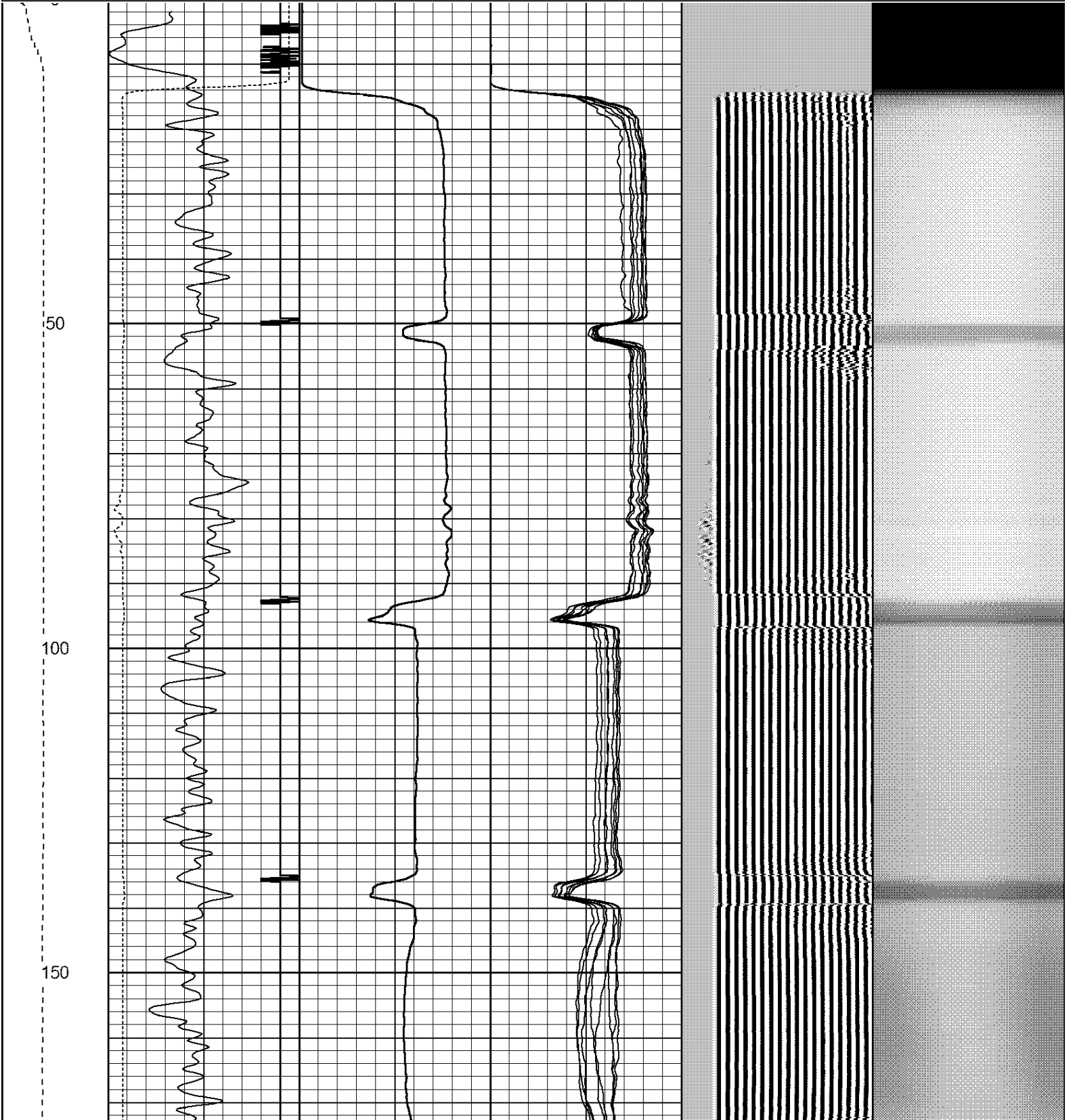
Sensor	Offset (ft)	Schematic	Description	Len (ft)	OD (in)	Wt (lb)
			CHD1_4	1.00	1.44	1.00

HEADVOL I	15.02					
IntTemp	13.60					
WVF3FT	10.35		RBT-Probe (Base) Probe Radii Bond Tool with Digital Telemetry	8.92	2.75	90.00
WVFCAL	10.35					
WVFS1	10.35					
WVFS2	10.35					
WVFS3	10.35					
WVFS4	10.35					
WVFS5	10.35					
WVFS6	10.35					
WVFS7	10.35					
WVFS8	10.35					
WVF5FT	9.35					
CNLSC	6.00					
CNSSC	5.17		CNT-Probe_B (275) 6 bow centralizer	1.77	2.75	40.00
CCL	3.64					
GR	0.90		GR-Probe (275) Probe 2.75"	4.33	2.75	30.00

Dataset: df ranch 1161-08-14.db: field/well/run1/pass6  
 Total Length: 16.02 ft  
 Total Weight: 161.00 lb  
 O.D. 2.75 in

Database File: df ranch 1161-08-14.db  
 Dataset Pathname: pass6  
 Presentation Format: ips\_rbt

LSPD	200	TT (usec)	1000	0	AMP (mV)	100	0	AMPS1	100	200	VDL	1200	1	Cement Map	8
(ft/min)	-9	CCL	1				0	AMPS2	100				100		1
0	250	0	GR (GAPI)	150			0	AMPS3	100						
		150	GR (GAPI)	400			0	AMPS4	100						
							0	AMPS5	100						
							0	AMPS6	100						
							0	AMPS7	100						
							0	AMPS8	100						

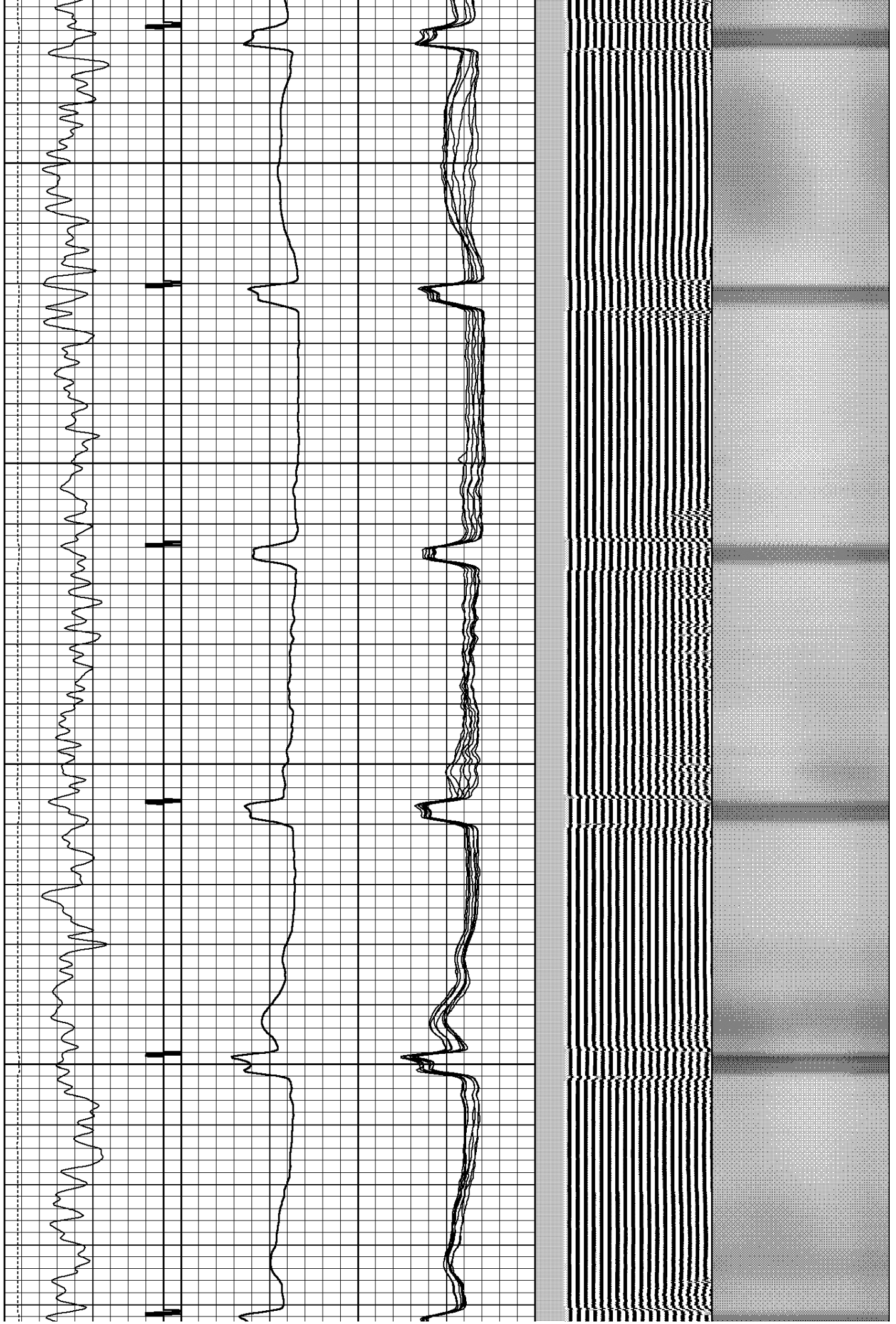


200

250

300

350



400  
450  
500  
550  
600

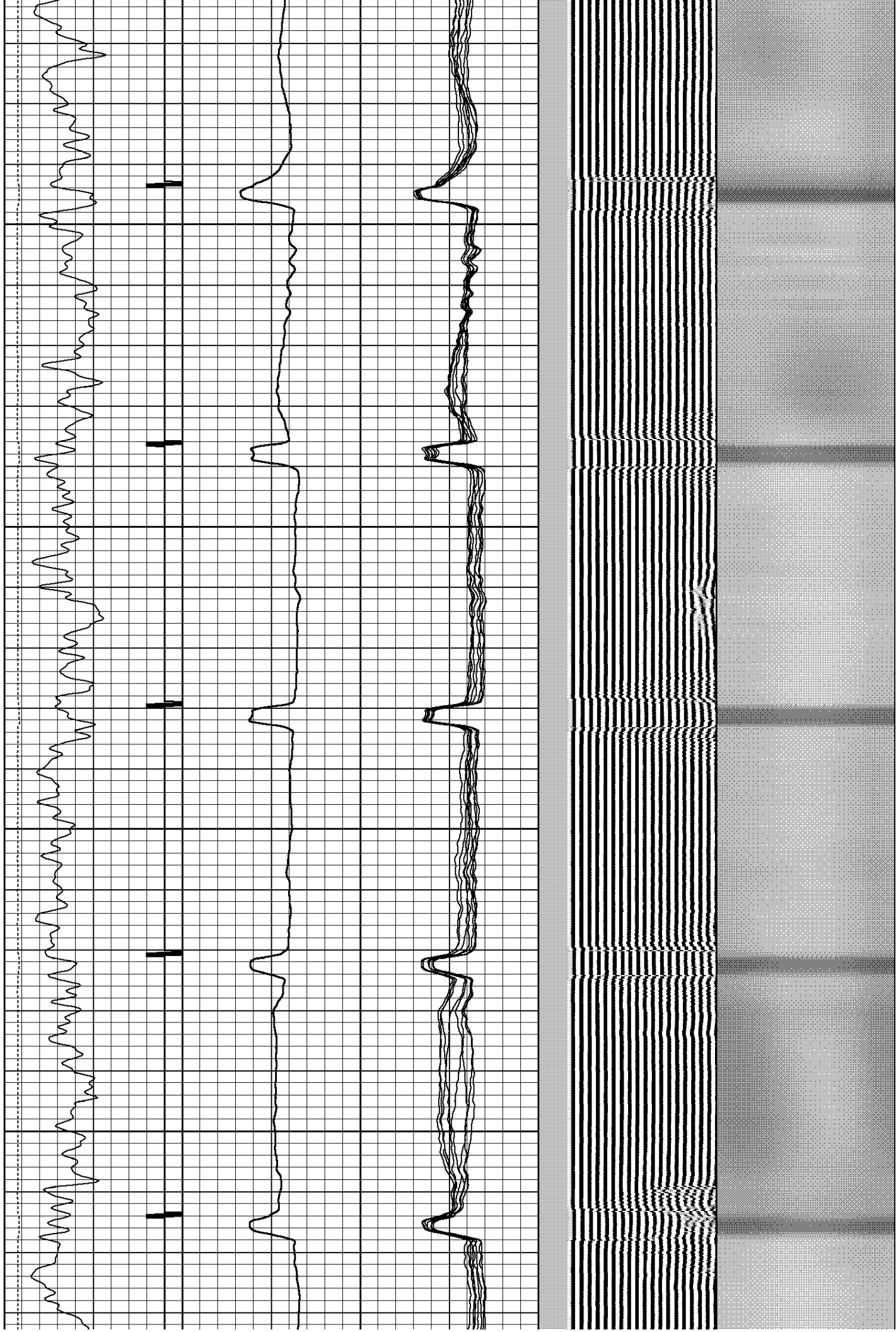


650

700

750

800



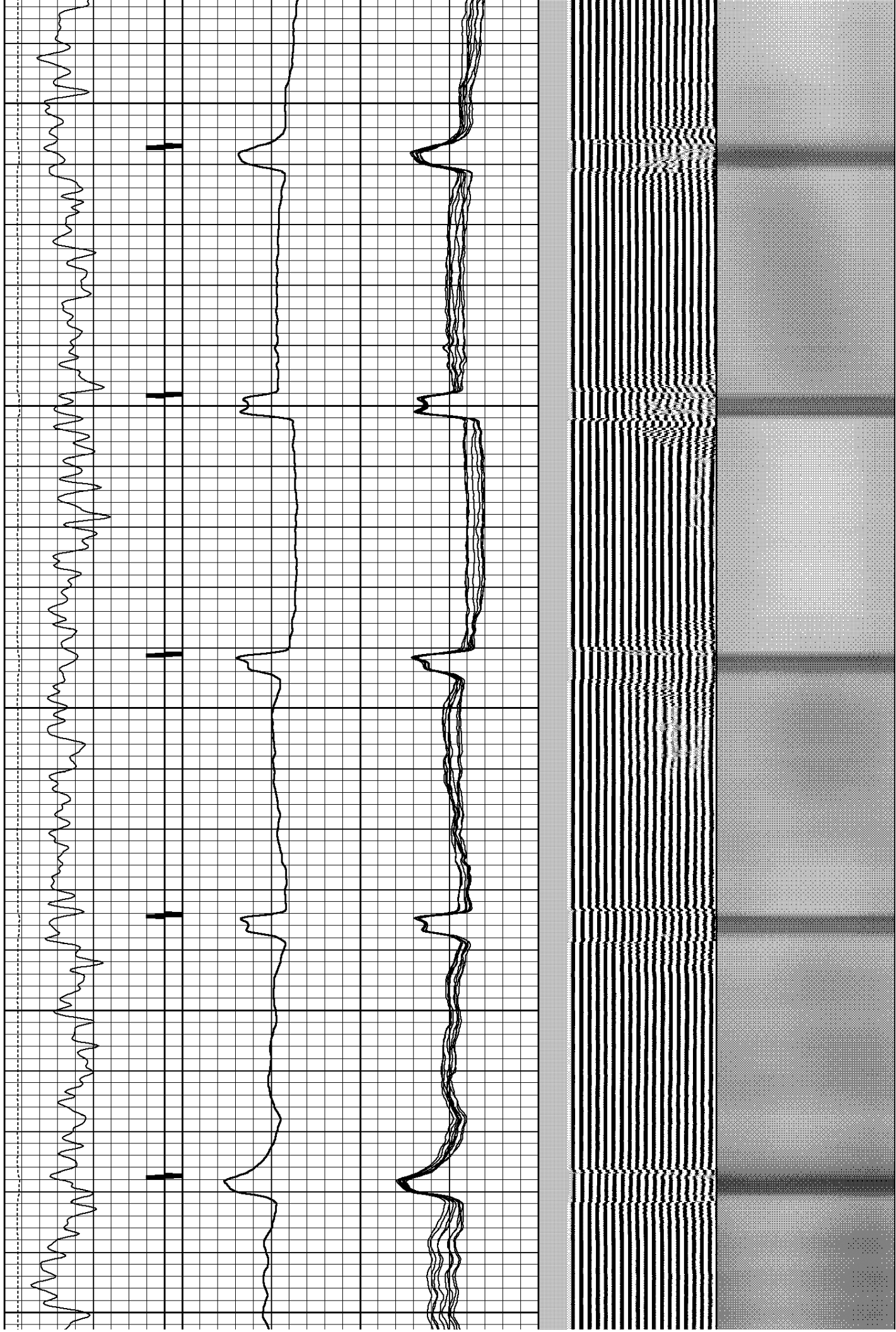
850

900

950

1000

1050

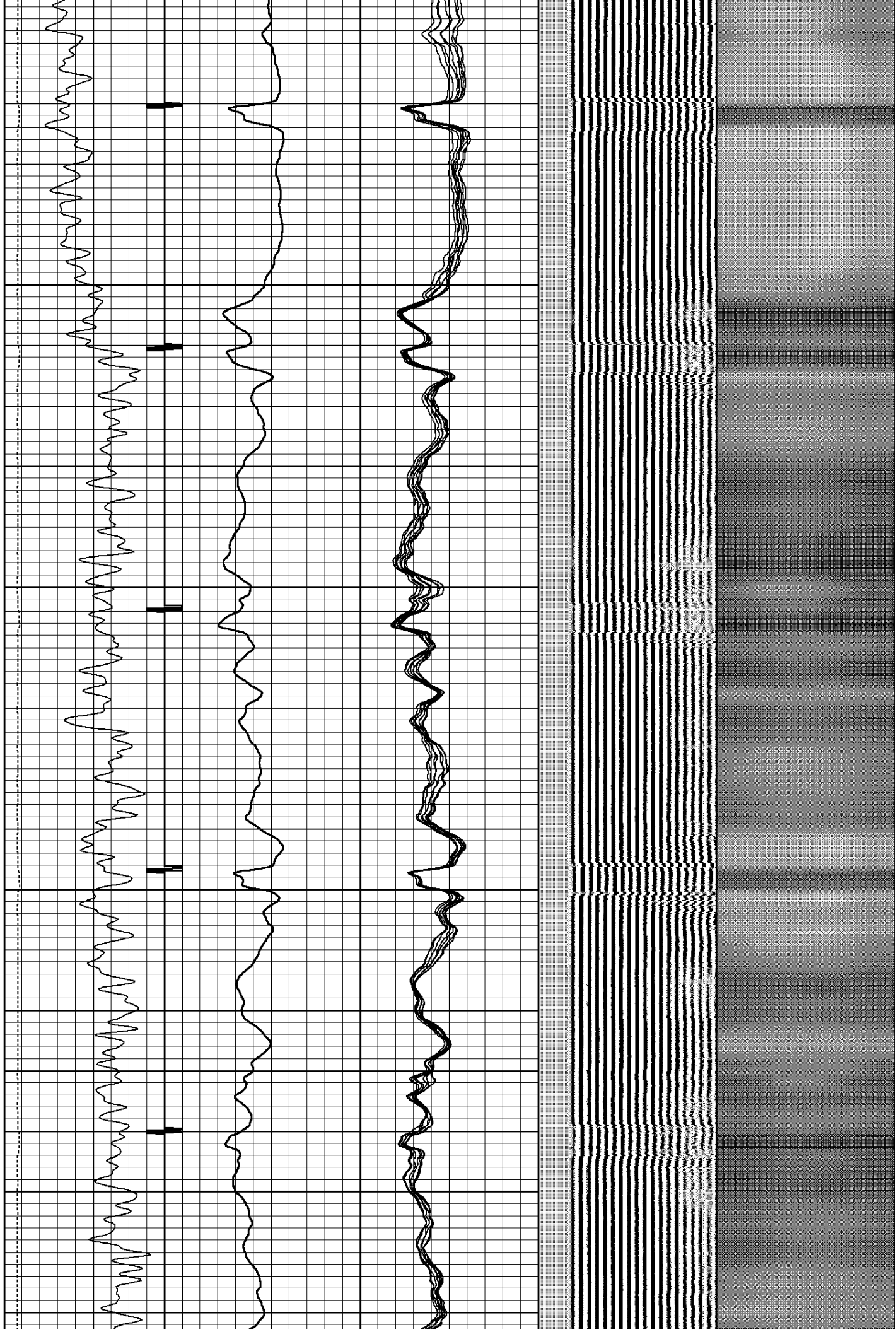


1100

1150

1200

1250

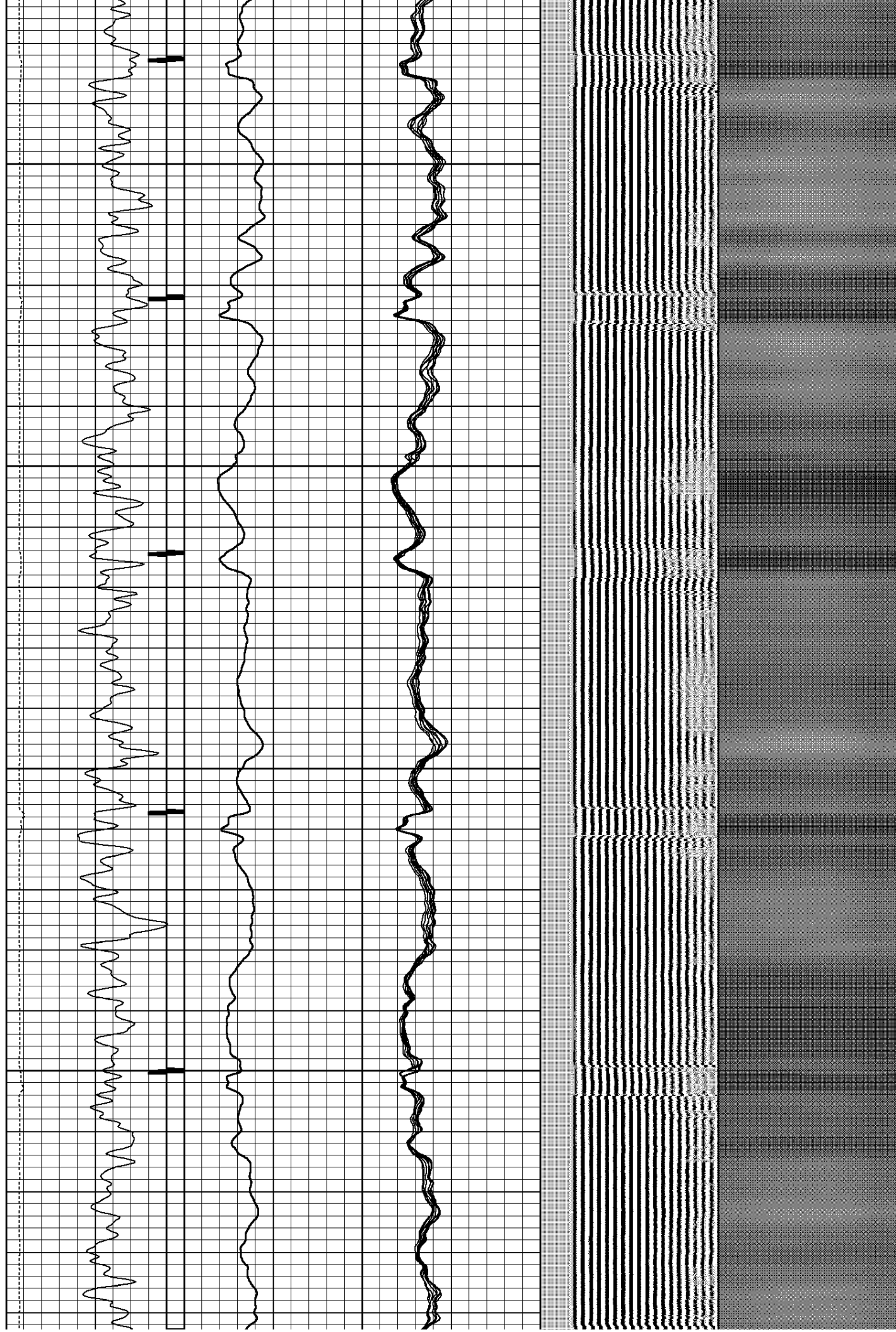


1300

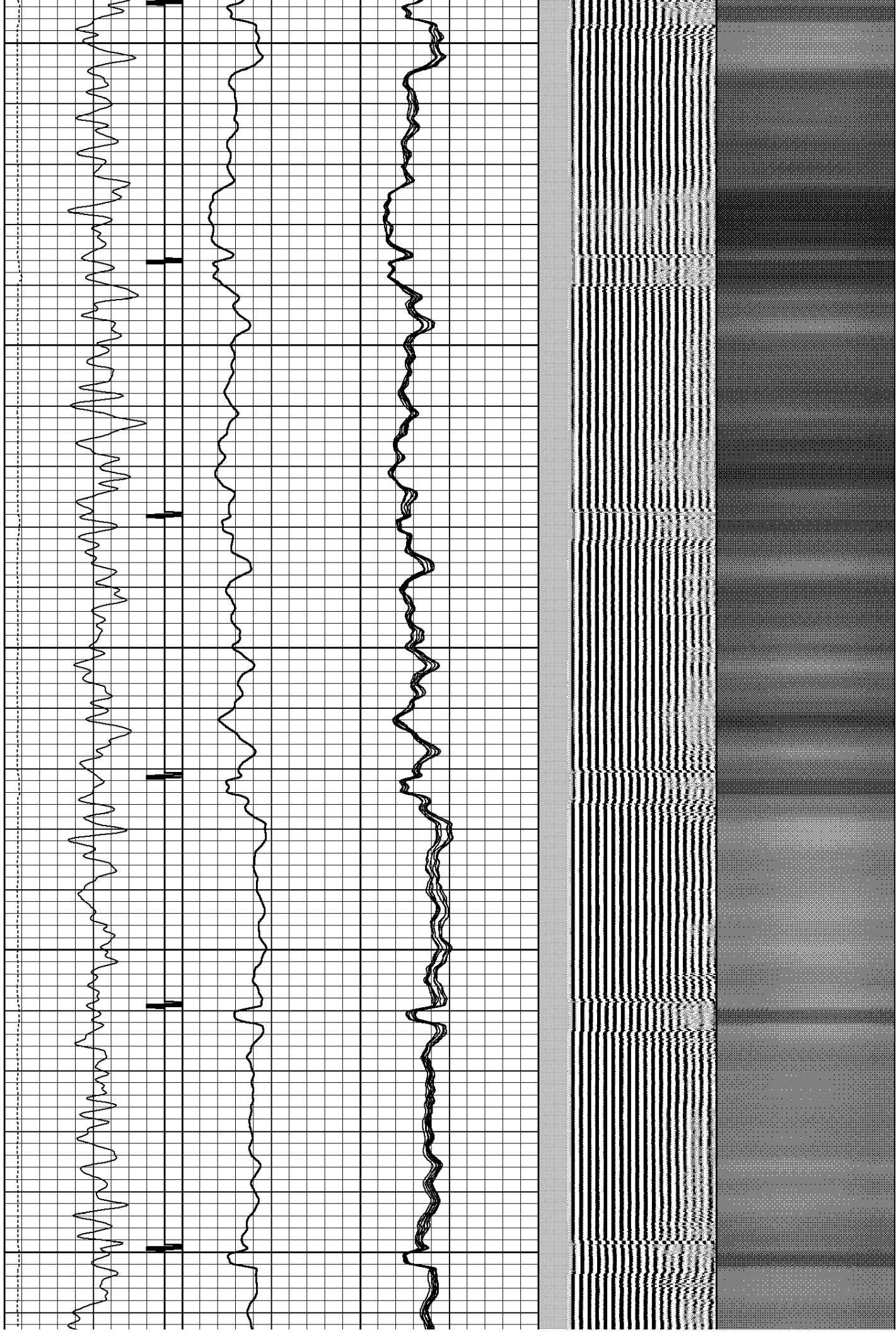
1350

1400

1450



1500  
1550  
1600  
1650  
1700

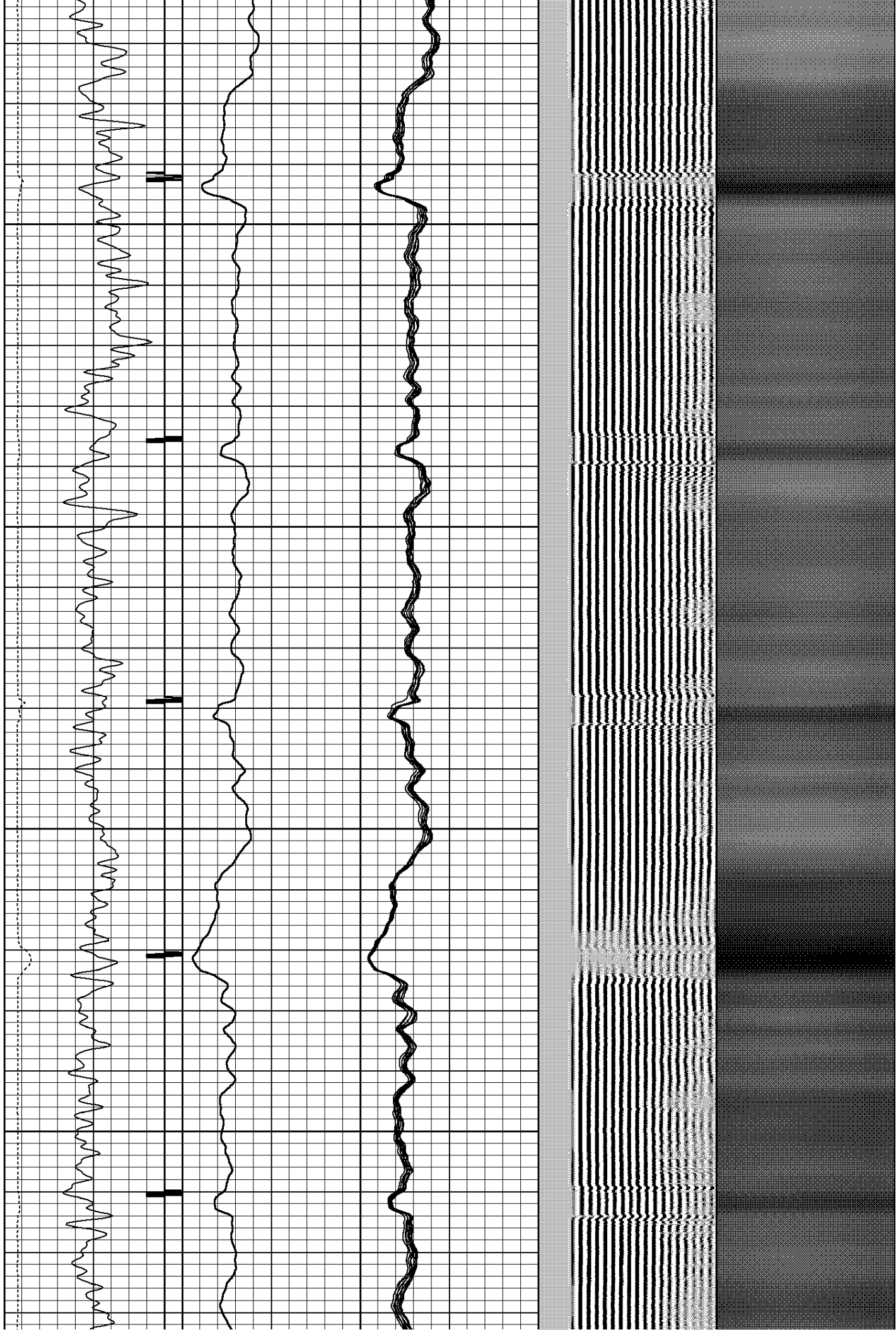


1750

1800

1850

1900



1950

2000

2050

2100

2150

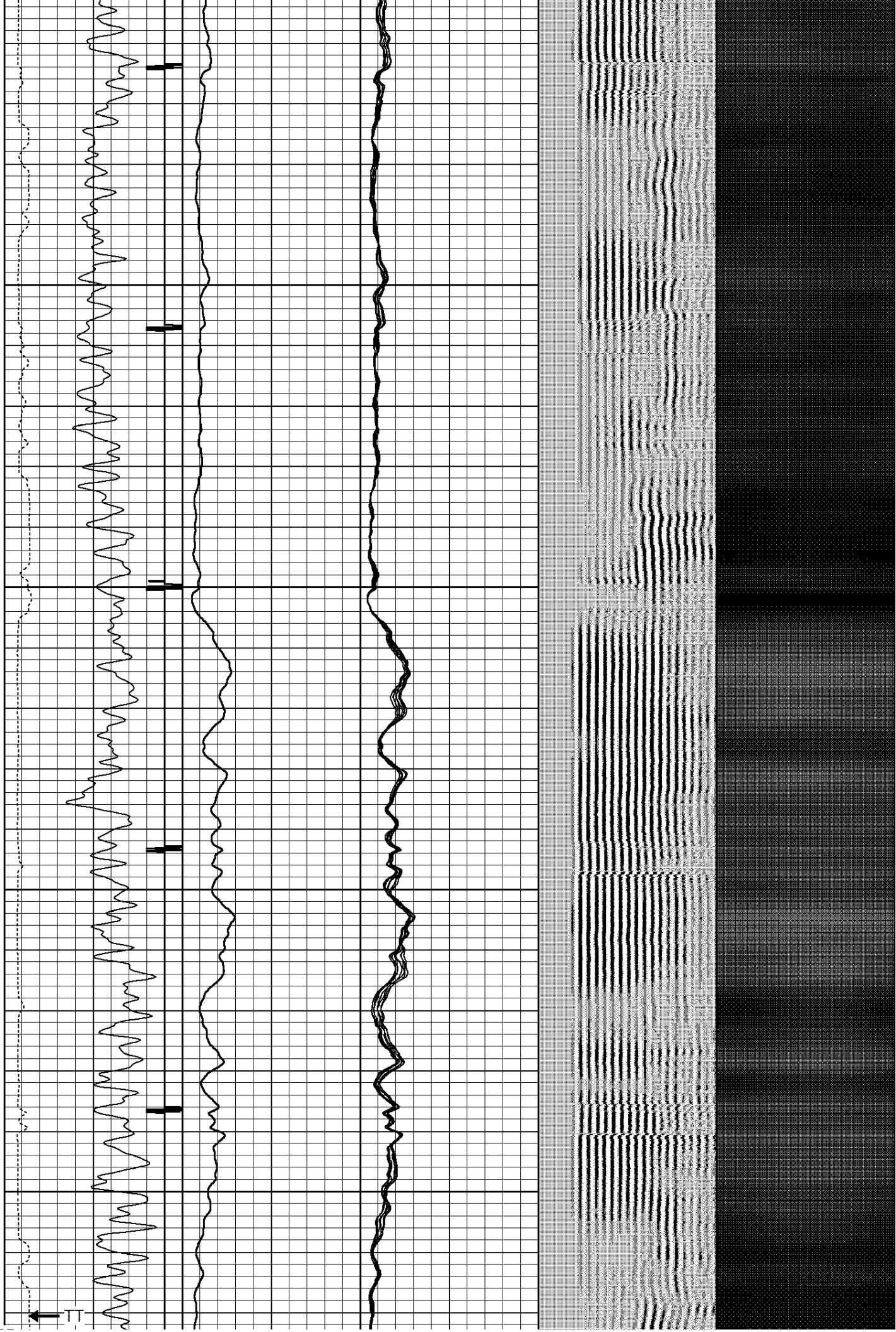


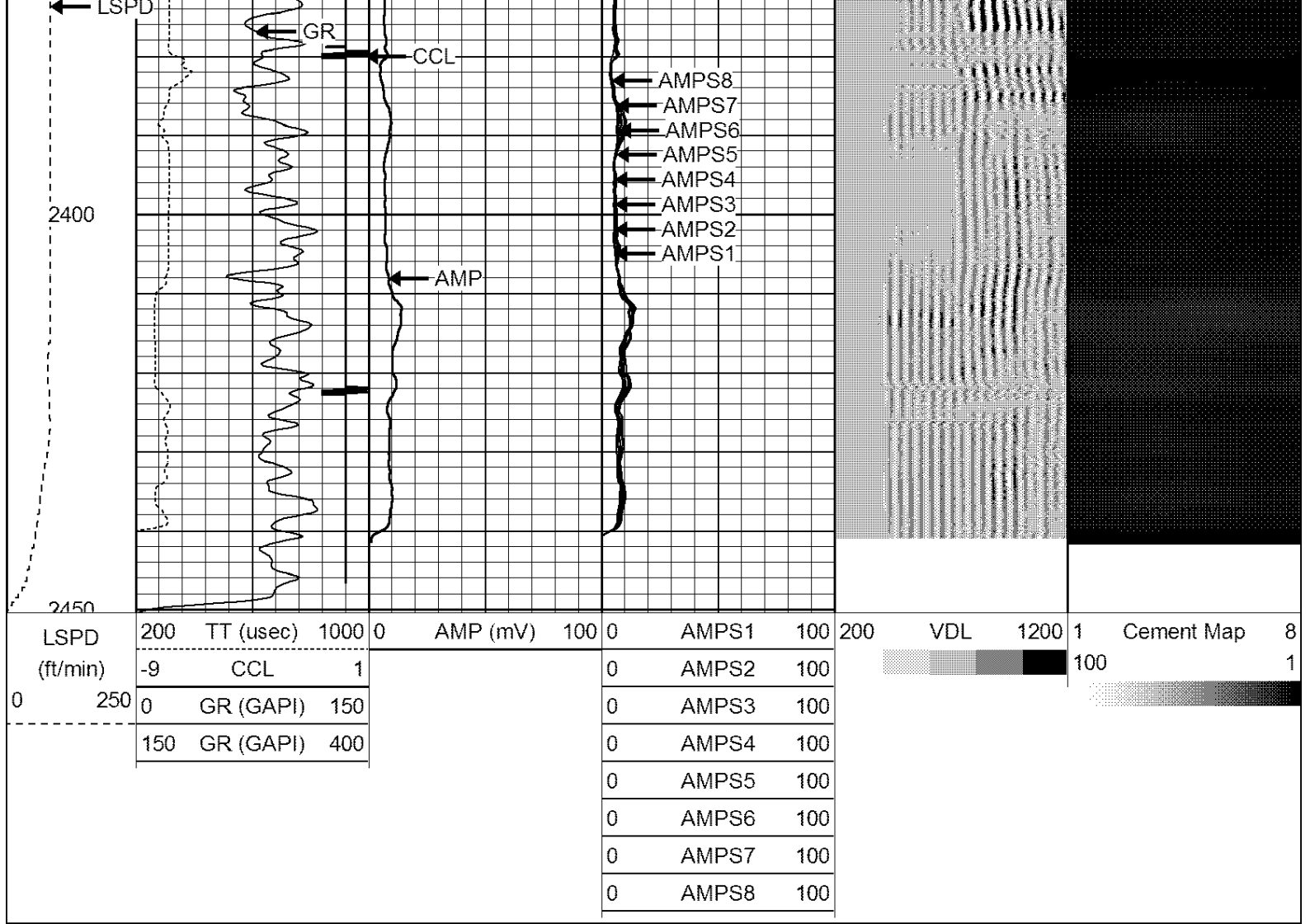
2200

2250

2300

2350





Company	CIVITAS
Well	DF RANCH 1161-08-14
Field	GROVER
County	WELD
State	CO