

SHANNON-ROBERTS #2

(API # 014-08759) Loc. # 335762
 FIELD NAME SPINDLE - #77900
 Spud Date 6/25/1976
 Basin DENVER - JULESBURG
 Location SENE 26 1N 68W
 Elevation GL (ft) 5163
 Elevation KB (ft) 5173
 TD (ft) 5425
 PBTD (ft) 4984

QC MHH

Formation Tops

Lower Arapahoe Top - 23'
 Lower Arapahoe Bottom - 86'

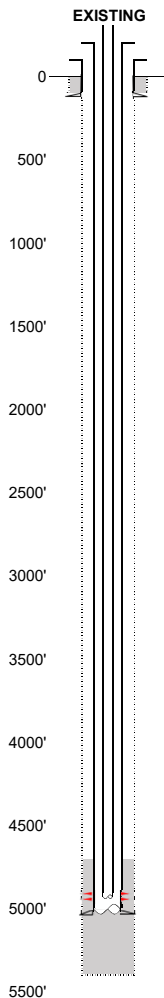
 Fox Hills Top - 479'

 Fox Hills Bottom - 799'

Base of Upper Pierre - 1970'
 depth taken from nearby induction log
 on UPRR 43 PAN AM UNIT Y #2 (123-14504)

SUSSEX - 4881'

No SHANNON Fm Production w/in 1 mi.



Existing Casing and Cement Coverage
 SURF: Size: 8.625", Hole Size: 12.25 in.
 Depth: 118 ft., Weight: 24
 Cement: 200 sx, Top: 0 ft., Method: Vis

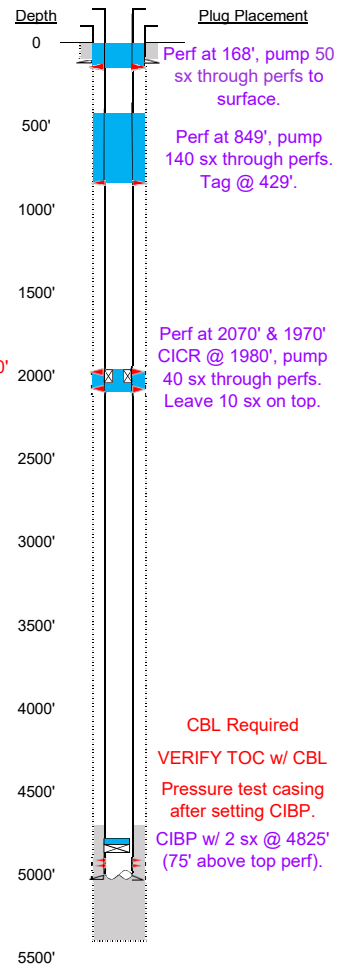
Deepest DWR w/in 1 mi. = 1040'

1ST, Size: 4.5", Hole Size: 7.875"
 Depth: 5030', Weight: 10.5
 Cement: 240 sx, TOC: 4675', Method: CBL

Base of Upper Pierre - 1970'

SUSSEX Fm Production w/in 1 mi.
 tubing 2 3/8" to 4911'
 TOC = 4675' (CBL)
 SUSX Perfs 4900'-4954'
 PBTD (ft) 4984
 TD (ft) 5425

PROPOSED



Plug Placement

Perf at 168', pump 50 sx through perfs to surface.

Perf at 849', pump 140 sx through perfs. Tag @ 429'.

Perf at 2070' & 1970' CICR @ 1980', pump 40 sx through perfs. Leave 10 sx on top.

CBL Required
 VERIFY TOC w/ CBL

Pressure test casing after setting CIBP.

CIBP w/ 2 sx @ 4825' (75' above top perf).