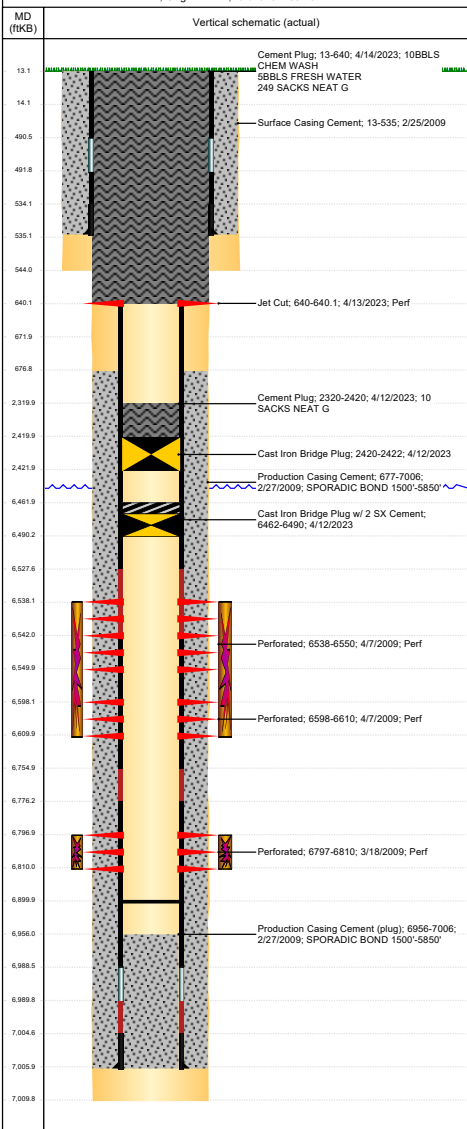




# P&A Wellbore For State

**Well Name: DINNEL C26-20**

Land, Original Hole, 7/4/2023 7:38:19 AM



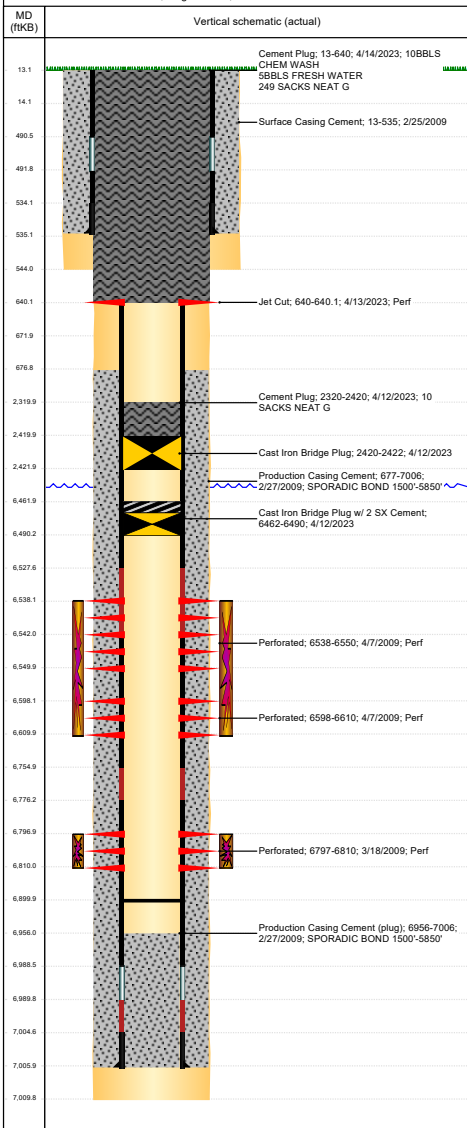
Well Header									
Surface UWI 0512329433		Business Unit Rockies		Gov Auth Dist		Prod Tree Loc Land			
Orig. KB to Grd		Orig. Spud Date		Abandon Date		Well Sub-Status			High
13.00		2/24/2009		5/31/2023		PA			N
Comment 318A.e. LOCATION!									
Surface Location (Congressional)									
Qtr 3	Qtr 4	Sect	Twnsh	Rng	BL	Latitude (")	Longitude (")		
SW	NW	26	4	N	64	W	40.28393 6171	-104.52285 5221	
Wellbore Sections									
Section Des		Hole Size (in)		Act Top (ftKB)		Act Btm (ftKB)			
SURFACE		12 1/4		13.0		544.0			
PRODUCTION		7 7/8		544.0		7,010.0			
Casing Strings									
Csg Des		Run Date	OD (in)	Wt/Len (lb/ft)	Grade	Top Depth (MD) (ftKB)	Set Depth (MD) (ftKB)		
Surface		2/24/2009	8 5/8	24.00	J-55	13	535		
Production Casing		2/27/2009	4 1/2	11.60	M-80	13	7006		
Cement									
Des			Start Date		Top (ftKB)		Btm (ftKB)		
Surface Casing Cement			2/25/2009		13.0		535.0		
Production Casing Cement			2/27/2009		677.0		7,006.0		
Cement Plug			4/12/2023		2,320.0		2,420.0		
Cement Plug			4/14/2023		13.0		640.0		
Zone Statuses									
Zone Name	Status Date	Status	Fluid Type	Job			Prod Method		
CODELL	4/9/2009	PR		DRILLING/COMPLETION - ORIGIN/					
CODELL	4/12/2023	Closed							
NIOBRARA	4/9/2009	PR		DRILLING/COMPLETION - ORIGIN/					
NIOBRARA	4/12/2023	Closed							
Perforation Data									
Linked Zone		Explosive Type	Entered Shot Total	Top (ftKB)		Btm (ftKB)		Date	
NIOBRARA, Original Hole		A	24	6,538.0		6,550.0		4/7/2009	
NIOBRARA, Original Hole		B	24	6,598.0		6,610.0		4/7/2009	
CODELL, Original Hole			52	6,797.0		6,810.0		3/18/2009	
Stimulation Intervals									
Zone			Start Date		Top (ftKB)		Btm (ftKB)		
NIOBRARA, Original Hole			4/7/2009		6,538.0		6,610.0		
CODELL, Original Hole			4/7/2009		6,797.0		6,810.0		



# P&A Wellbore For State

**Well Name: DINNEL C26-20**

Land, Original Hole, 7/4/2023 7:38:19 AM



Other In Hole					
Run Date	Des	Make	OD (in)	Top (ftKB)	Btm (ftKB)
4/12/2023	Cast Iron Bridge Plug w/ 2 SX Cerr		3.99	6,462.0	6,490.0
4/12/2023	Cast Iron Bridge Plug		3.99	2,420.0	2,422.0
Logs					
Date	Type	Depth Top (MD) (ftKB)	Btm (ftKB)		
2/27/2009	Caliper/Comp. Density/Neutron/GR/SP/ML	2,690	7,007.0		
2/27/2009	DIL/GR/SP/Caliper	535	7,007.0		
3/6/2009	CBL/CCL/GR	550	6,949.0		
Plug Back Total Depths					
Date	Type	Com			PBTD (ftKB)
12/7/2009	FILL				6,680
12/8/2009	PLUG REMNANTS	90' OF RAT HOLE			6,900