

Xbolt GAMMA RAY

1in/100ft Measured Depth

Final Print

Recorded Mode



Company:	PDC Energy Inc	API Number:	05-001-10329
Well:	Brant Federal 18C	Rig Name:	True Drilling 41
Field Name:	Wattenberg	Rig Type:	Land rig
Country Name:	United States	Job Number:	0.1039768.39
State Name:	Colorado	Print Type:	Final Print
County Name:	Adams	Northing:	1236453.99(ft)
Latitude:	39°58'50.182"N	Easting:	3182733.98(ft)
Longitude:	104°50'52.498"W	Coordinate System:	NAD83 Colorado State Plane, Northern Zone, US Feet
Spud Date:	03-Apr-2023		
Log Interval:	2139.00-23409.00(ft)		
Depth Source:	Driller's Depth		
Log Measured From:	Drill Floor		
Rig Floor above Ground Level:	25.00(ft)		
Ground Level above Mean Sea Level:	4973.00 (ft)		

Disclaimer

THE USE OF AND RELIANCE UPON THIS RECORDED-DATA BY THE HEREIN NAMED COMPANY (AND ANY OF ITS AFFILIATES, PARTNERS, REPRESENTATIVES, AGENTS, CONSULTANTS AND EMPLOYEES) IS SUBJECT TO THE TERMS AND CONDITIONS AGREED UPON BETWEEN SLB AND THE COMPANY, INCLUDING: (a) RESTRICTIONS ON USE OF THE RECORDED-DATA; (b) DISCLAIMERS AND WAIVERS OF WARRANTIES AND REPRESENTATIONS REGARDING COMPANY'S USE AND RELIANCE UPON THE RECORDED-DATA; AND (c) CUSTOMER'S FULL AND SOLE RESPONSIBILITY FOR ANY INFERENCE DRAWN OR DECISION MADE IN CONNECTION WITH THE USE OF THIS RECORDED-DATA.

Operational Run Summary

Notes

Run 1 (Bit Size: 8.5 in)

DateTime Log Started	28-Apr-2023 12:41:26	DateTime Log Finished	02-May-2023 08:30:54
Start Depth (ft)	2164	Stop Depth (ft)	23409
Mud Type	Oil Based Mud	Mud Density (lbm/gal)	10.2
Potassium (%)	0	Barite	Yes
GR Sensor Offset (ft)	23.89	Calibration Coefficient	0
DNI Sensor Offset (ft)	27.53		

Log

Description: Xbolt GAMMA RAY Format: XBOLT_PDC Index Scale: 1in/100ft Index Unit: ft Index Type: Measured Depth
 Creation Date: 09-May-2023

TVD_RT	Depth	ROP5_RT	TEMP_RT,XBOLT
1,500 ft, Borehole 7,500	1 : 100	0 ft/h, Borehole 1,000	0 degF, Borehole 300

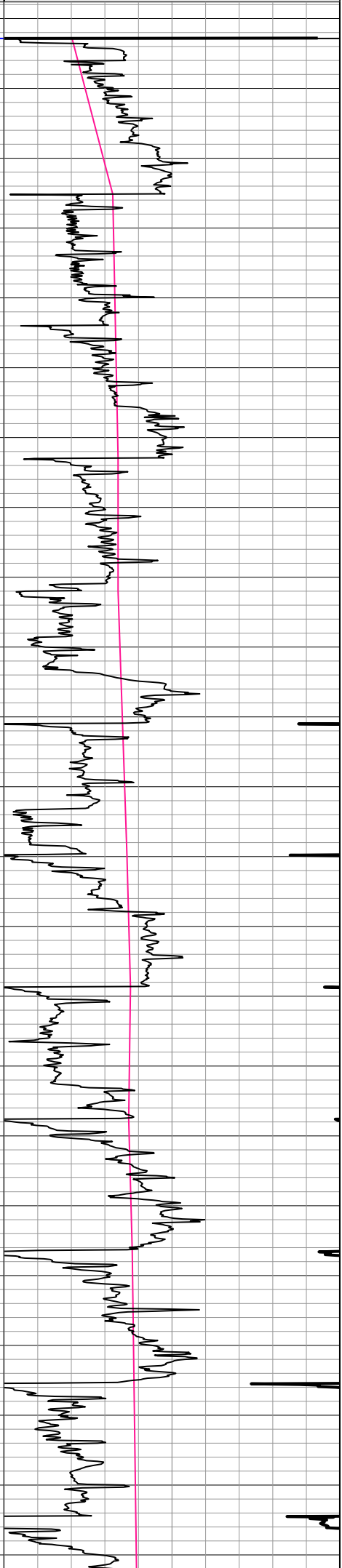
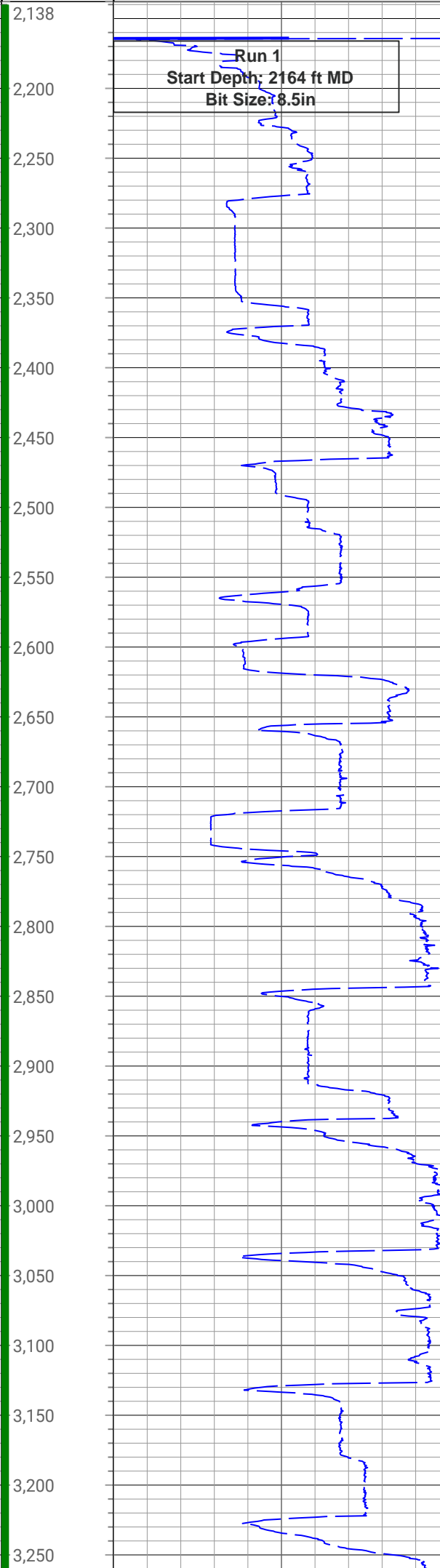
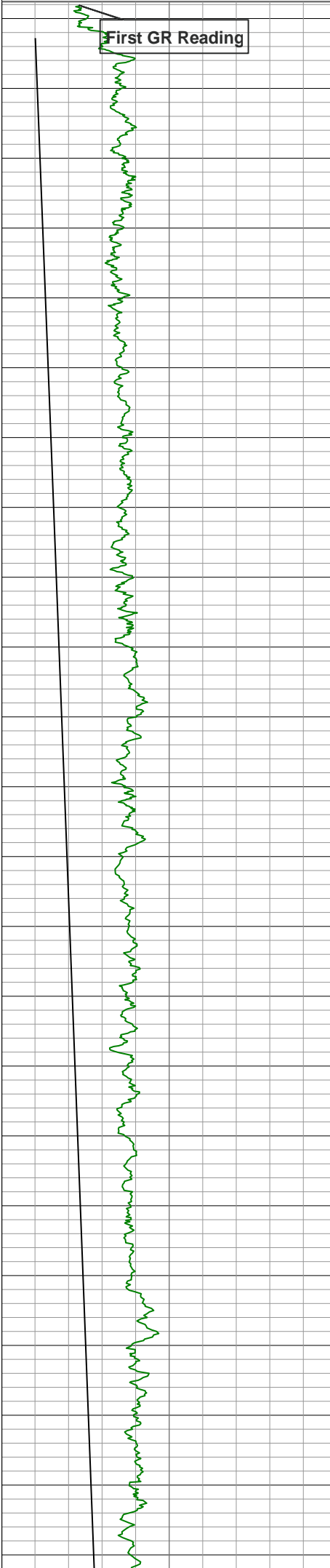
GR_RM,XBOLT

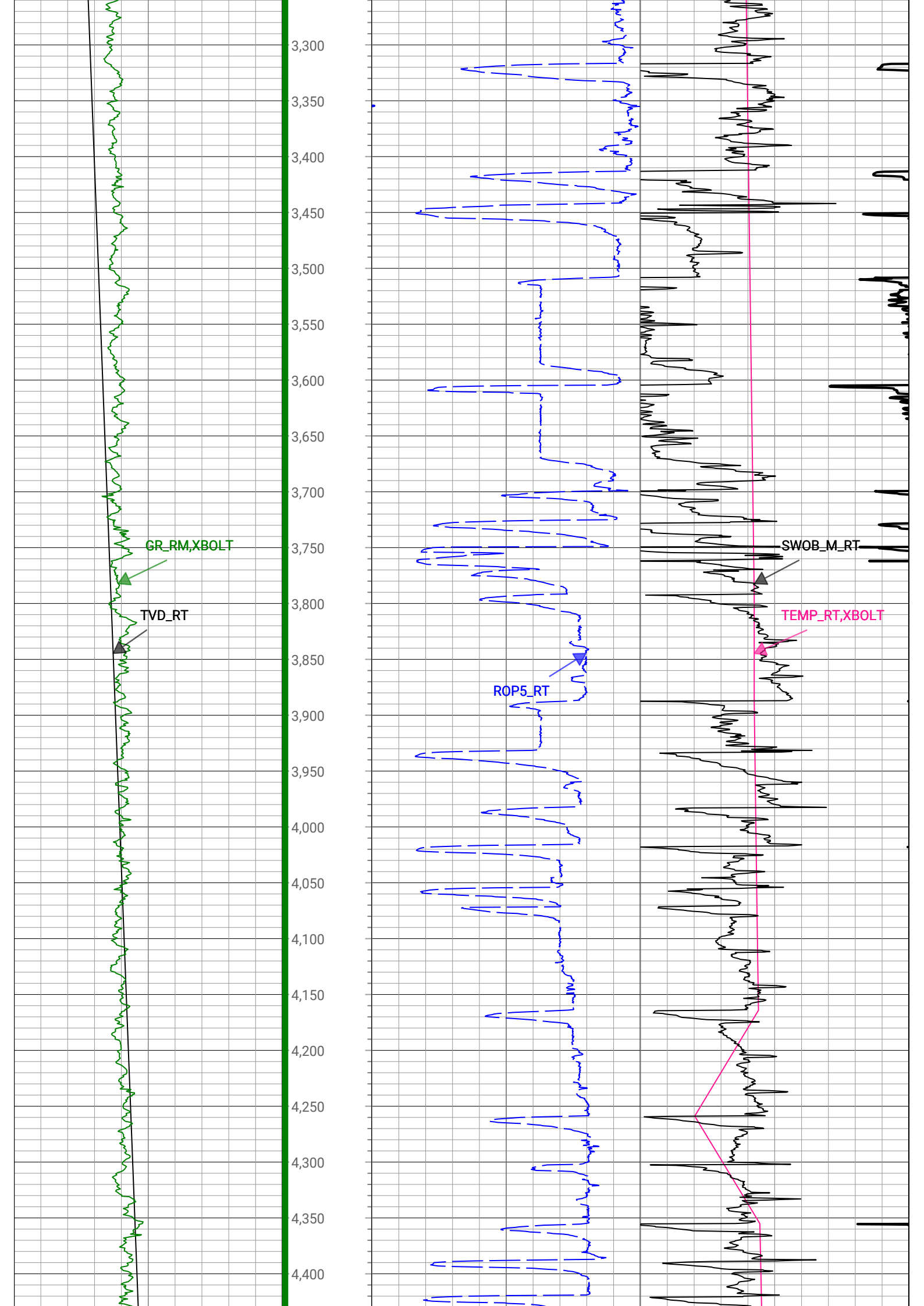
in : ft

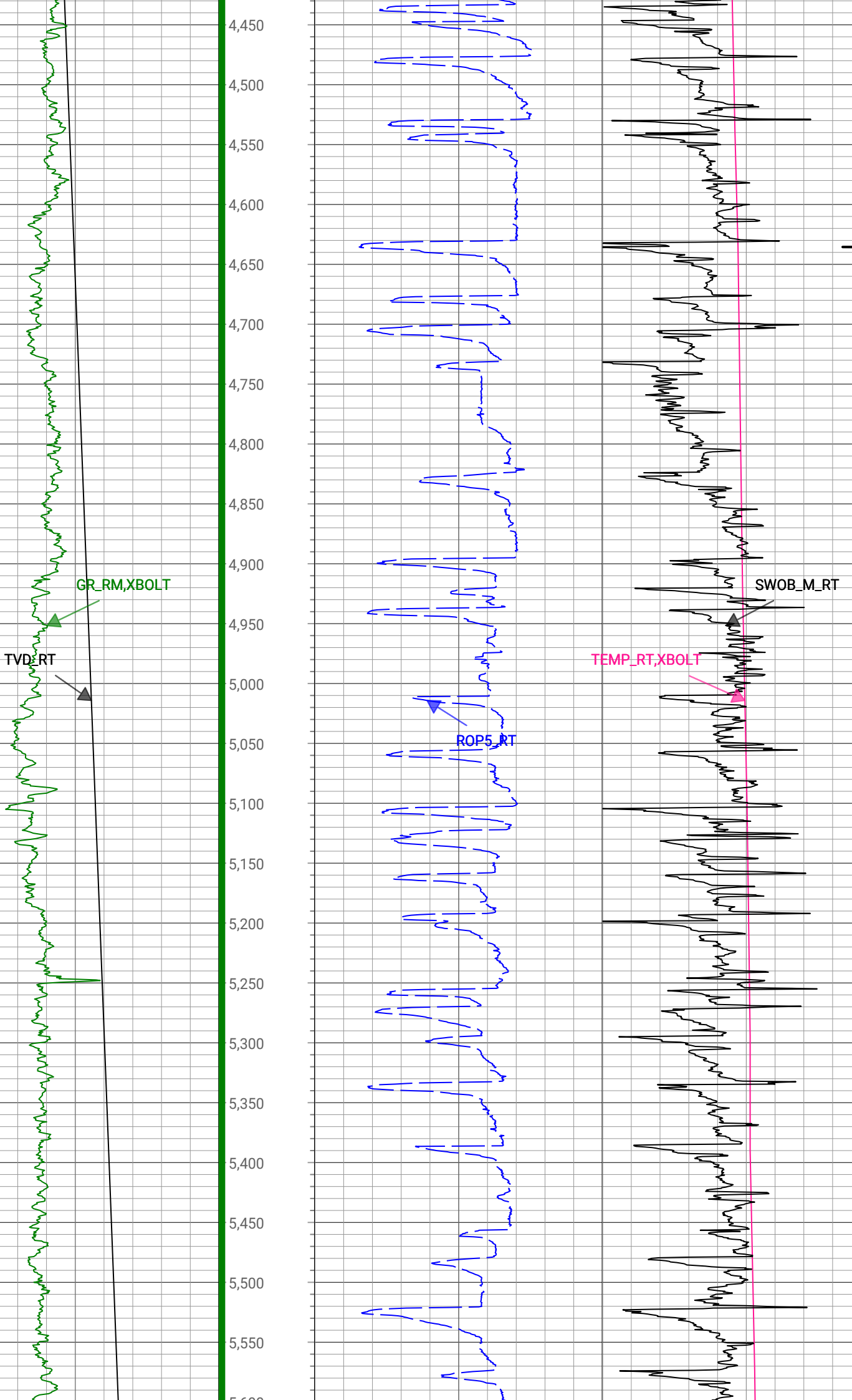
SWOB_M_RT

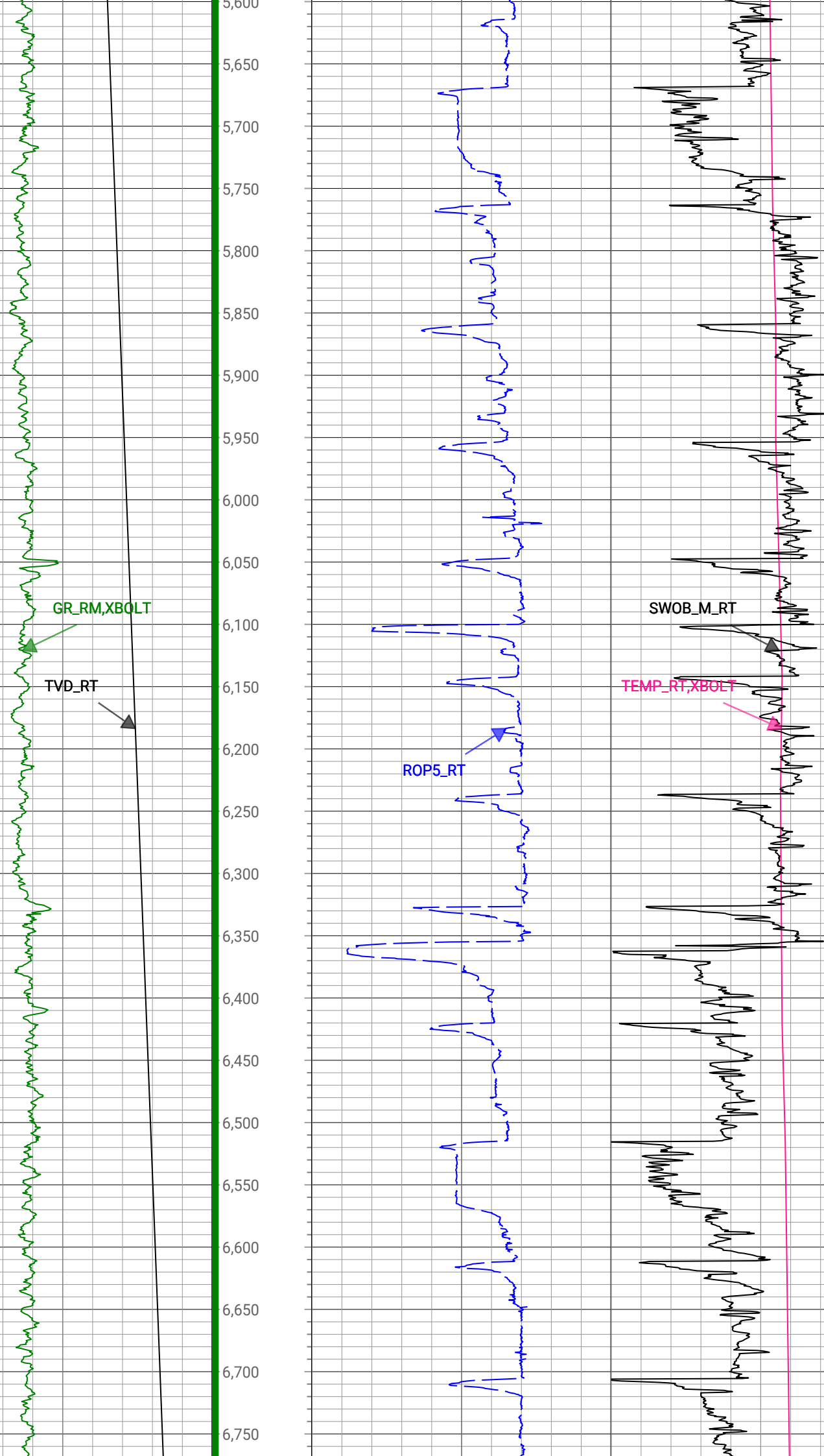
0 gAPI, Borehole 300

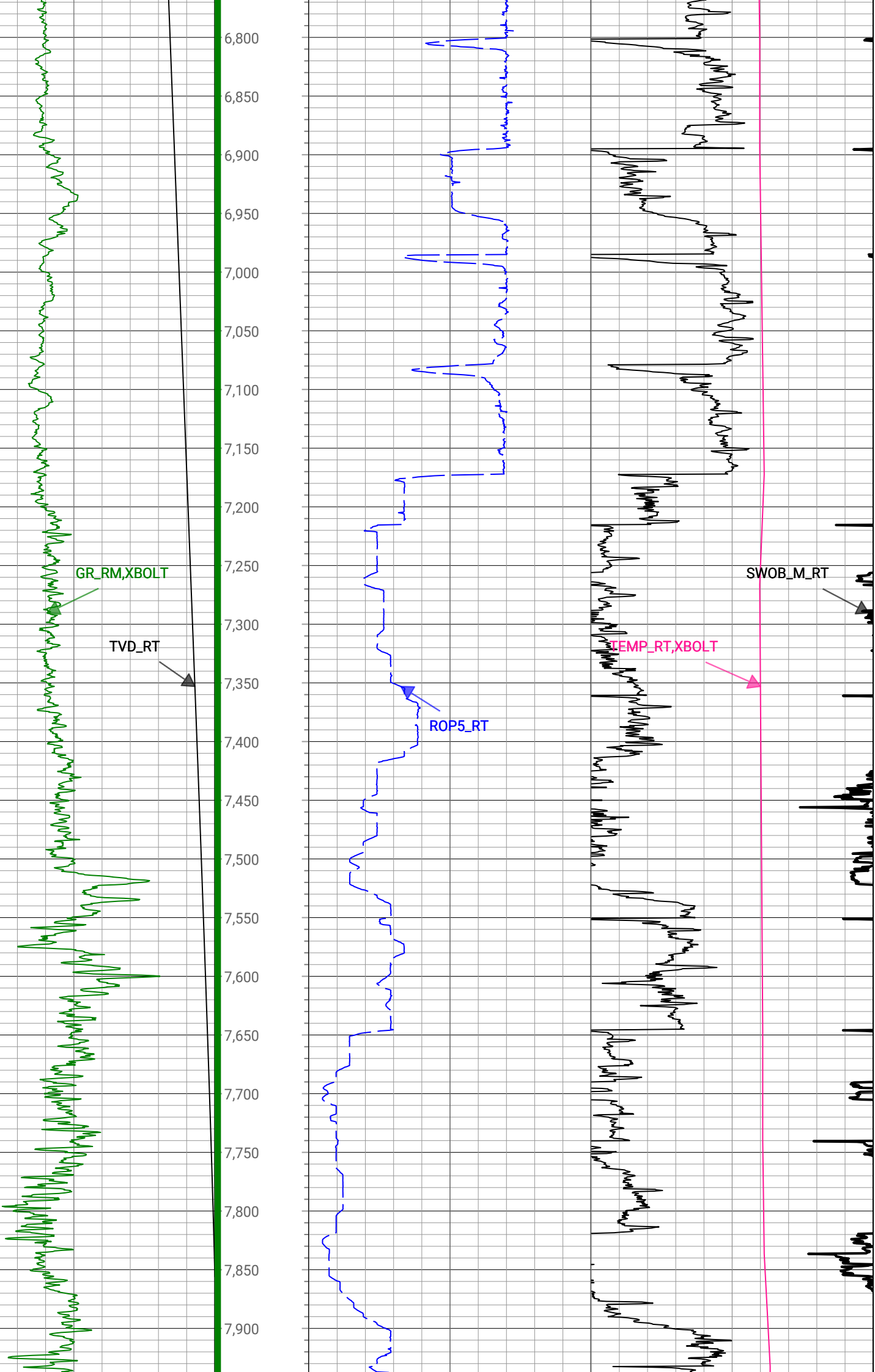
0 1000 lbm, Borehole 50

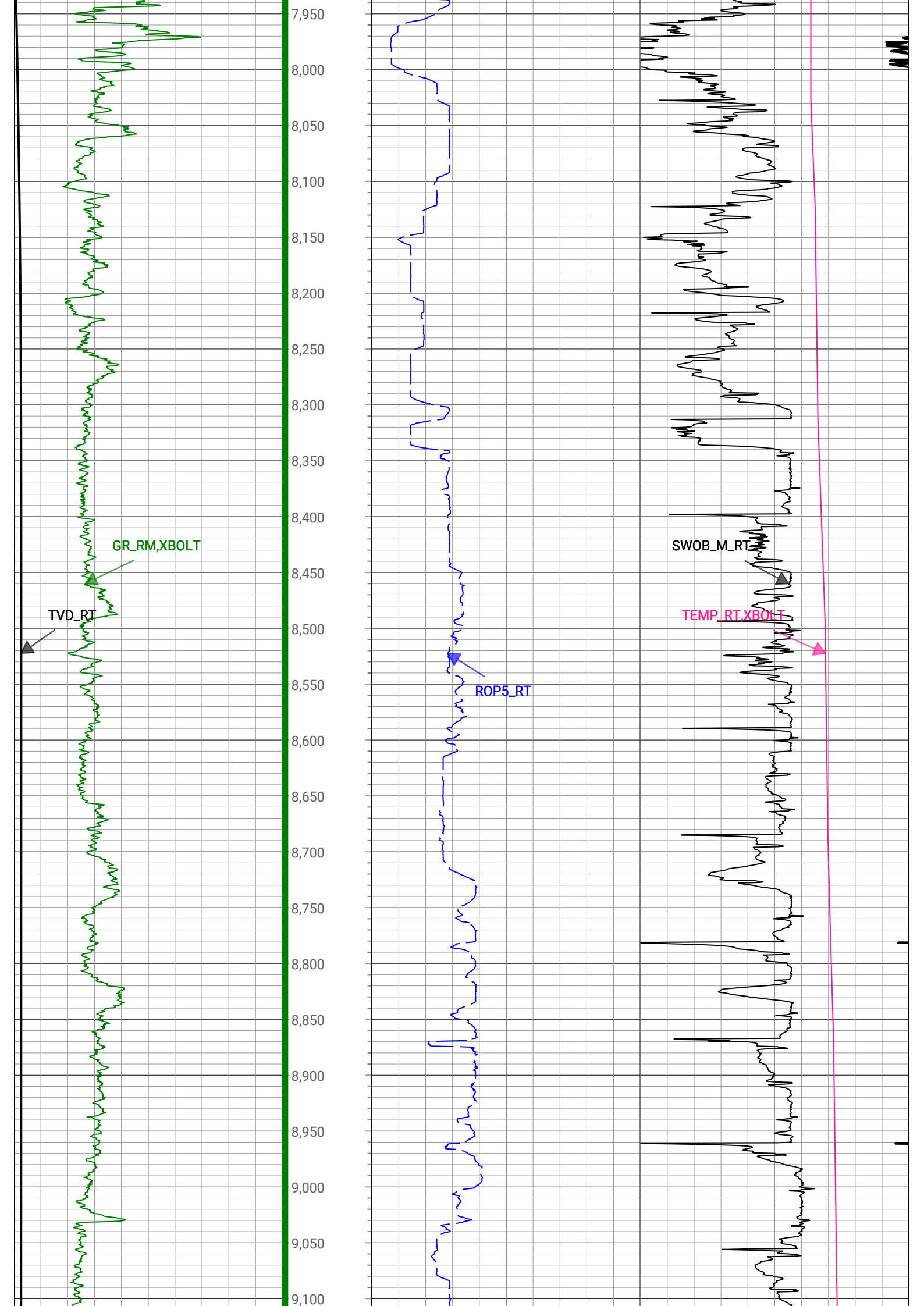


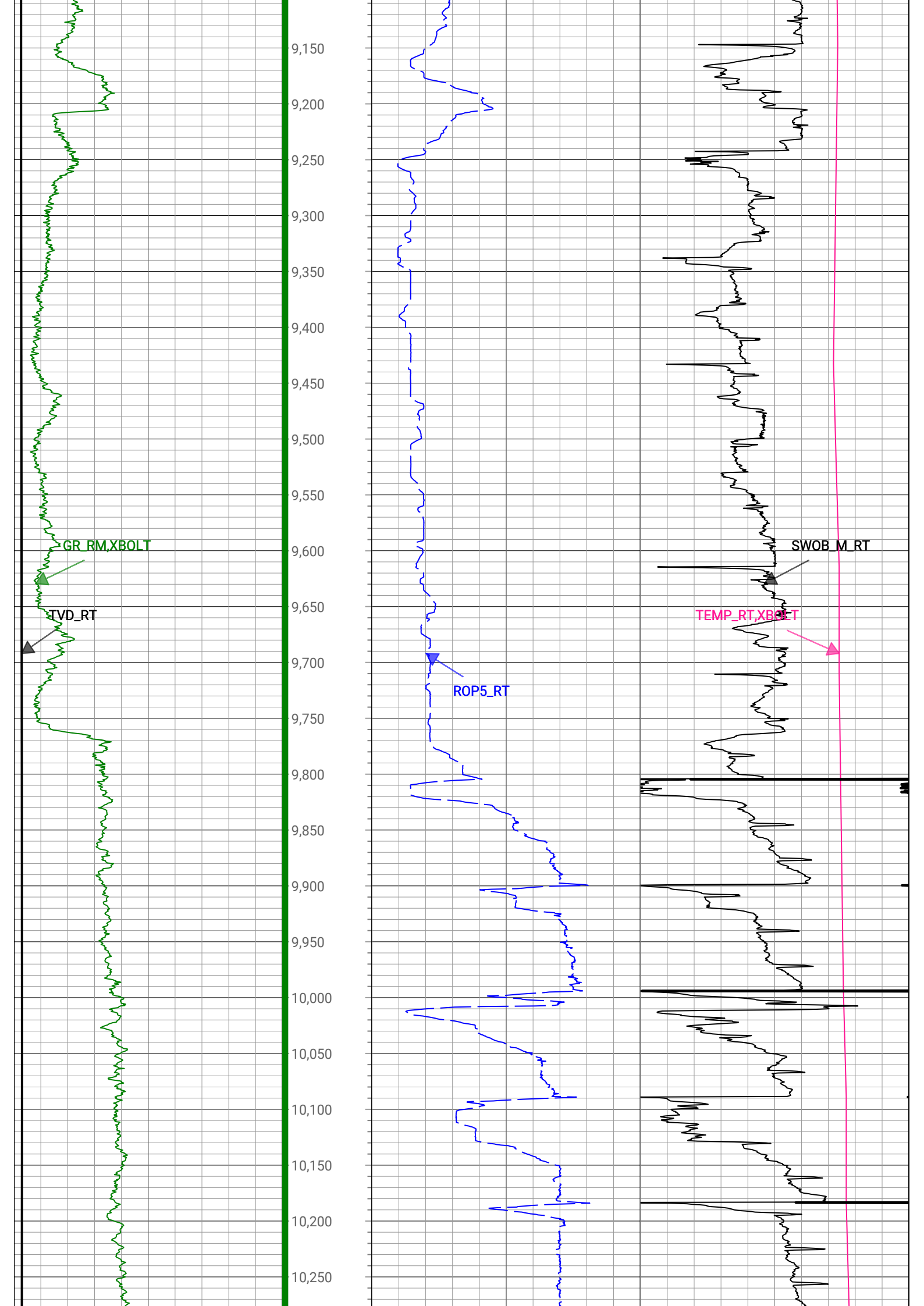


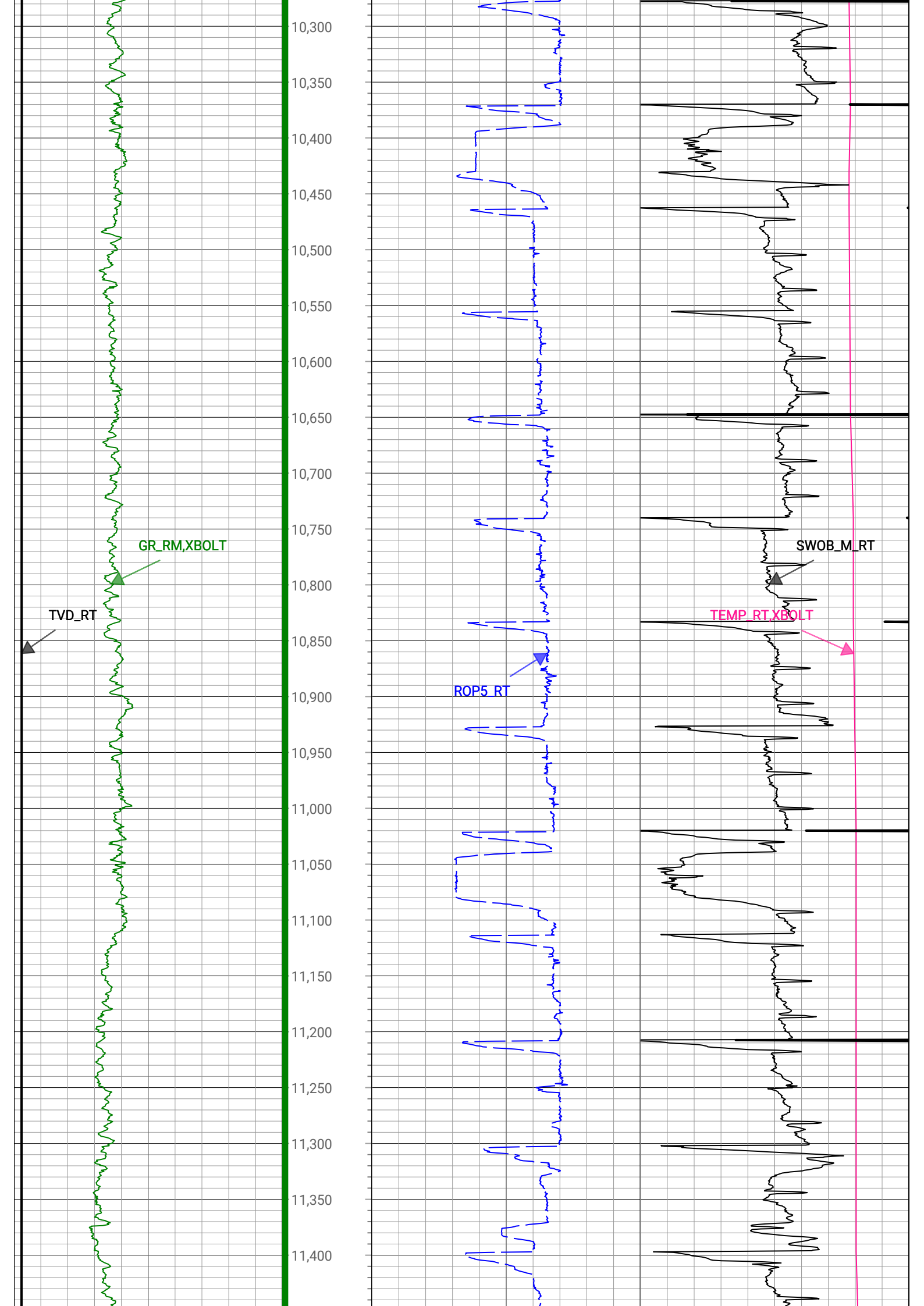


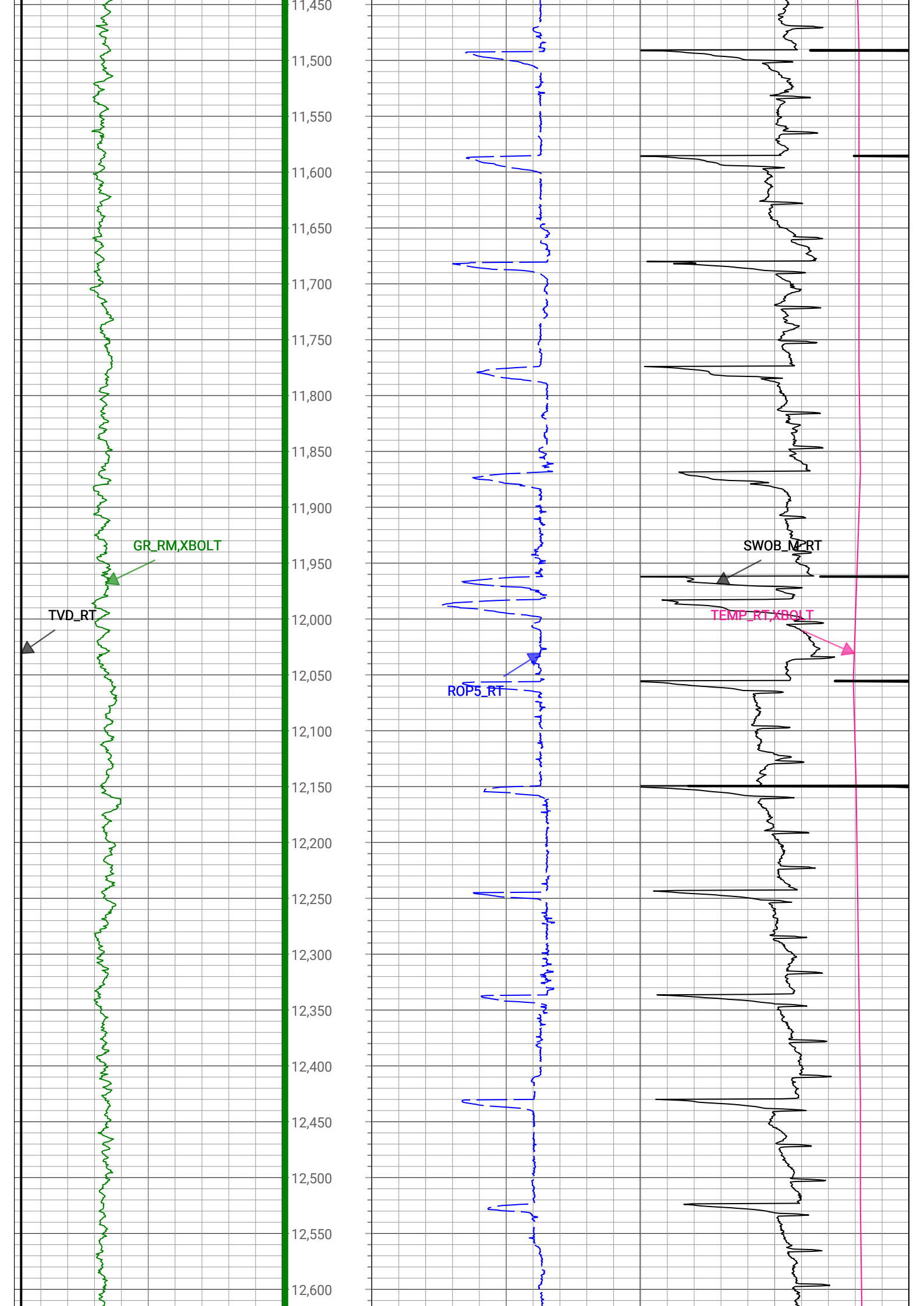


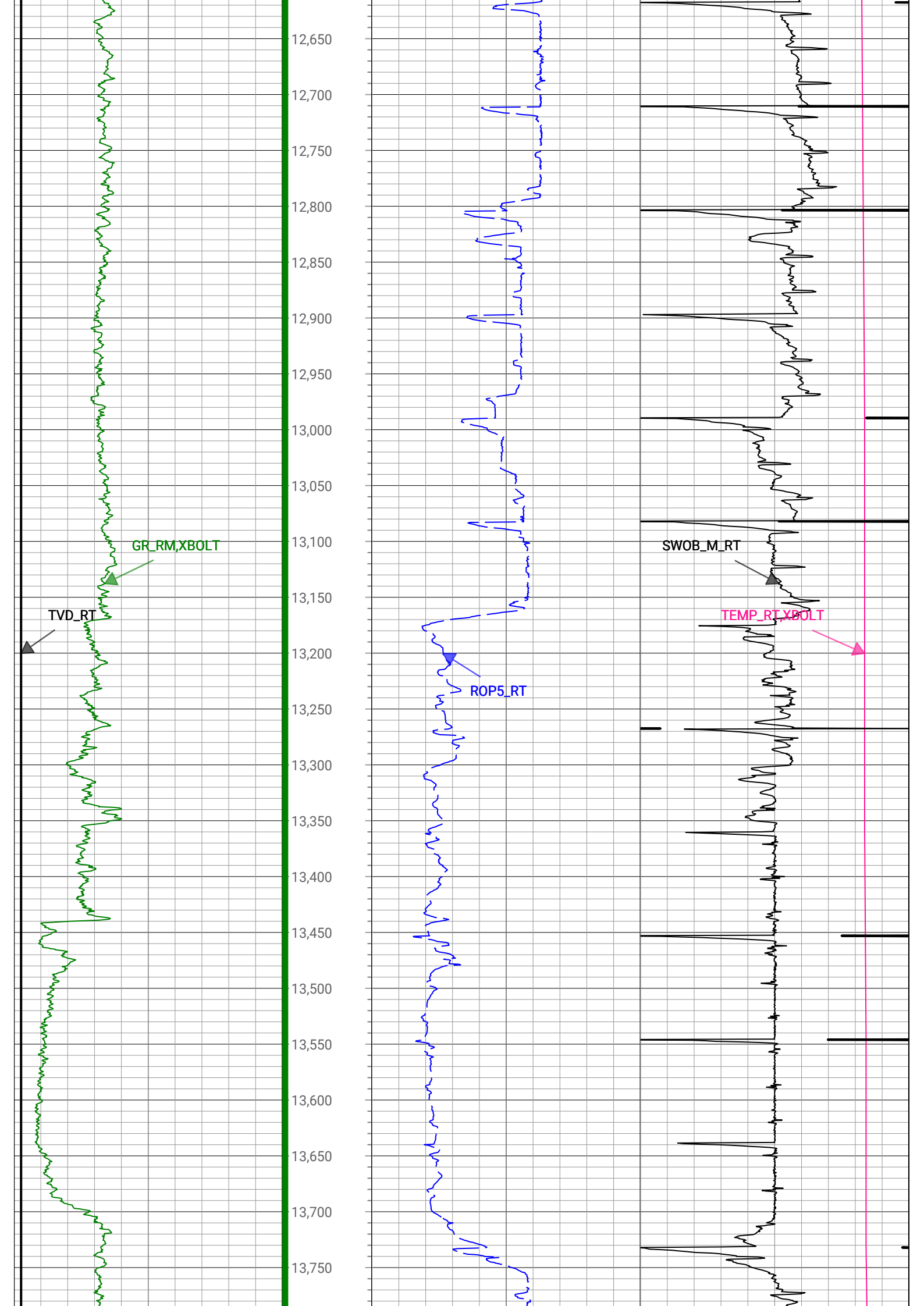


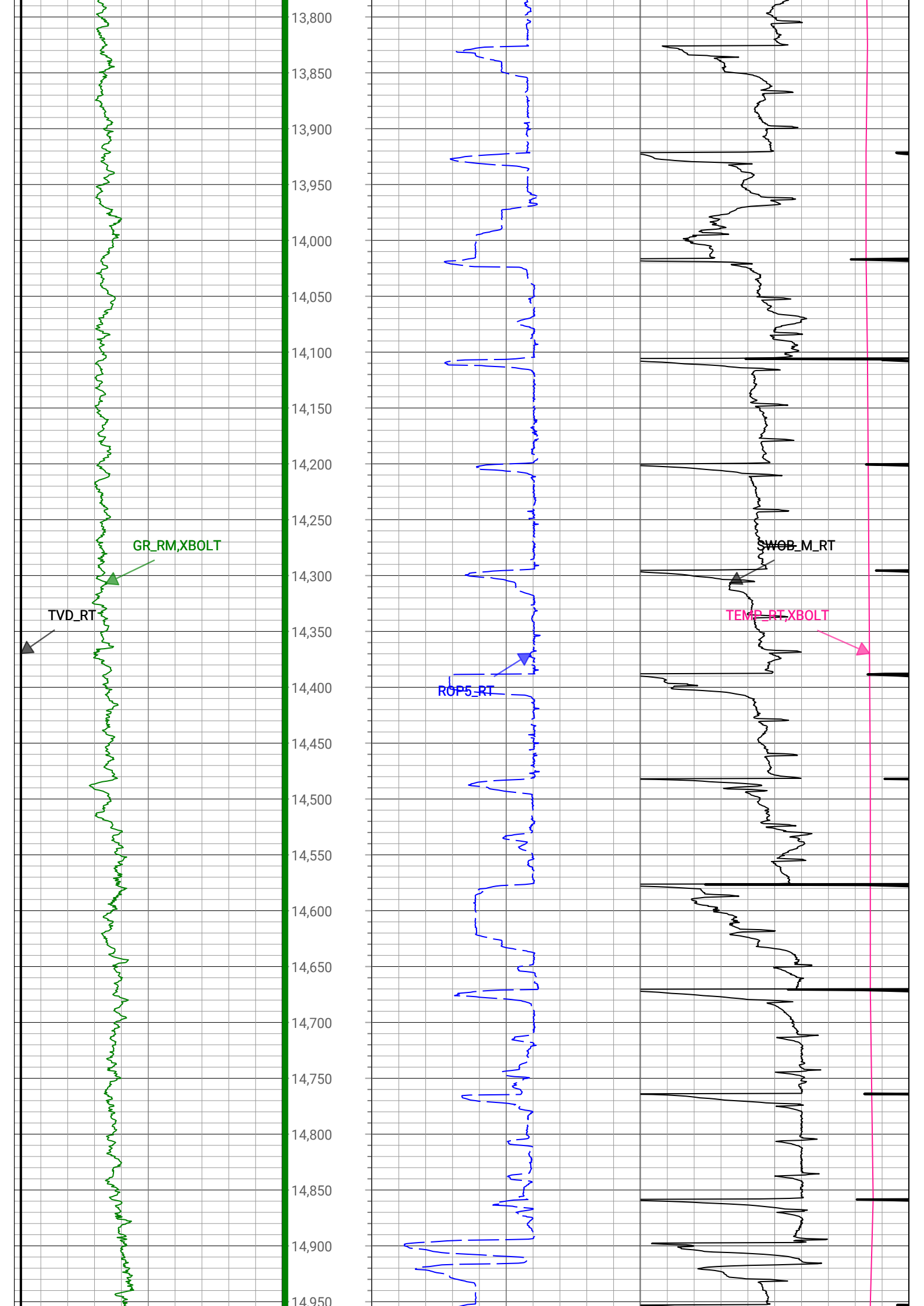


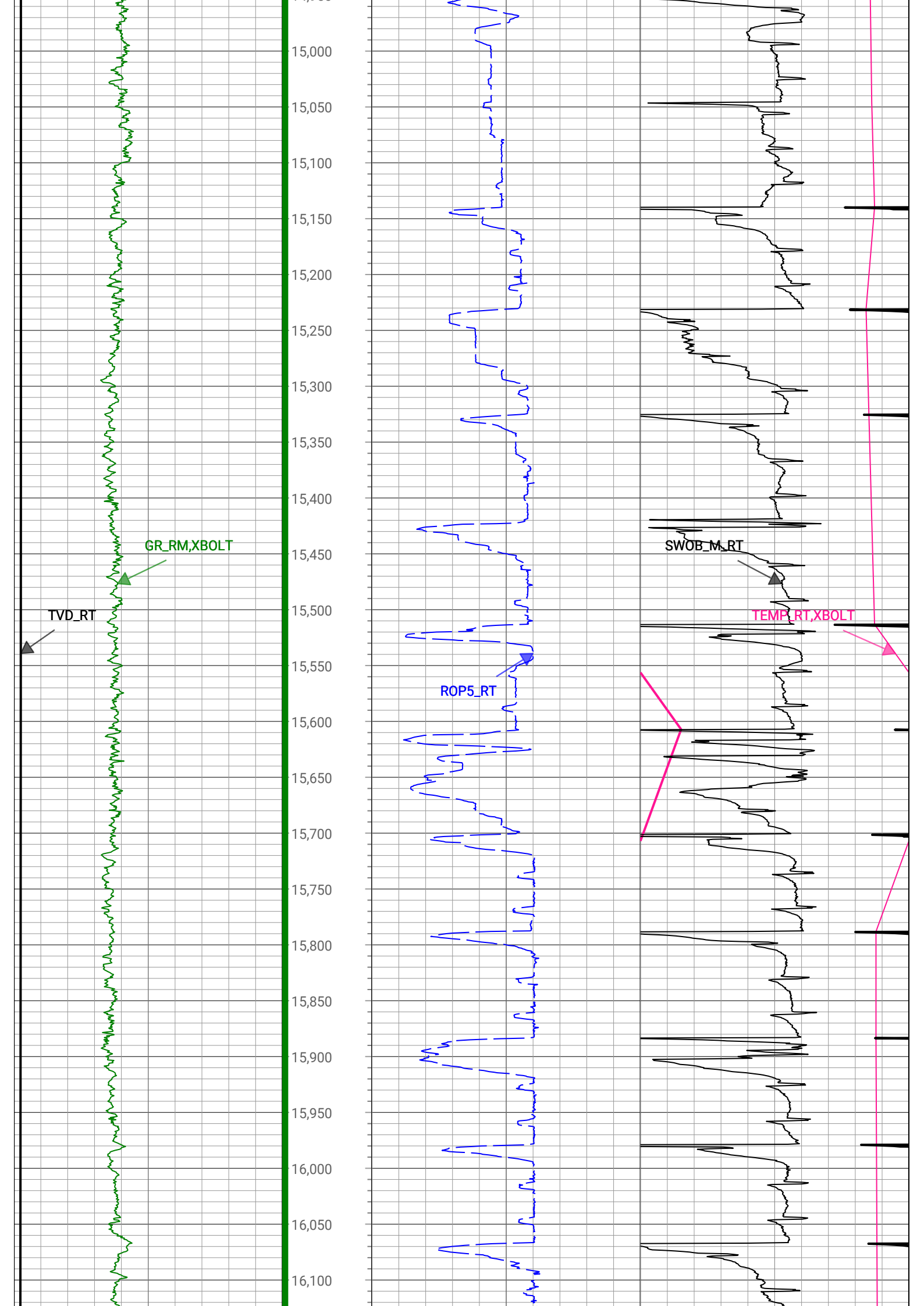


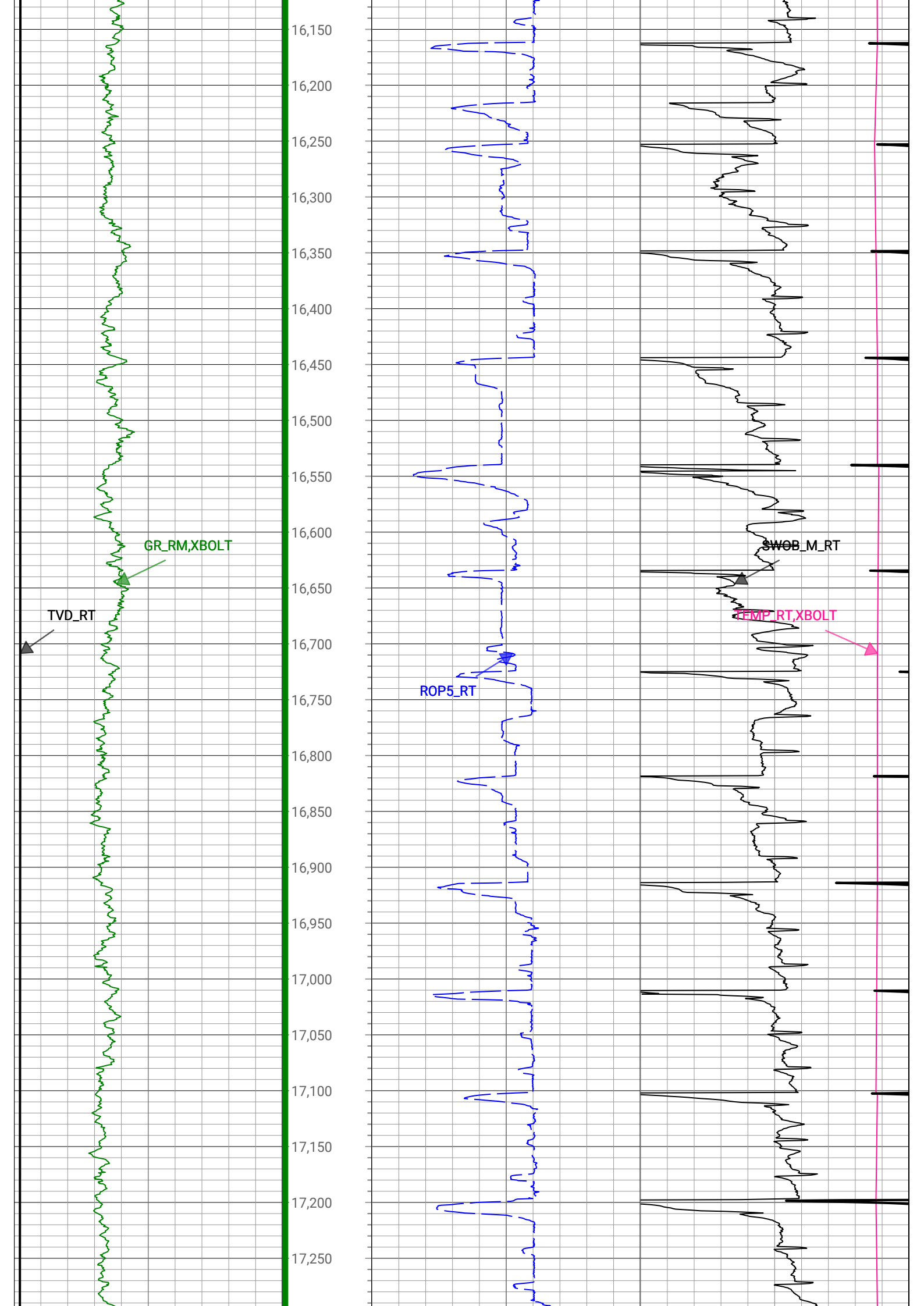


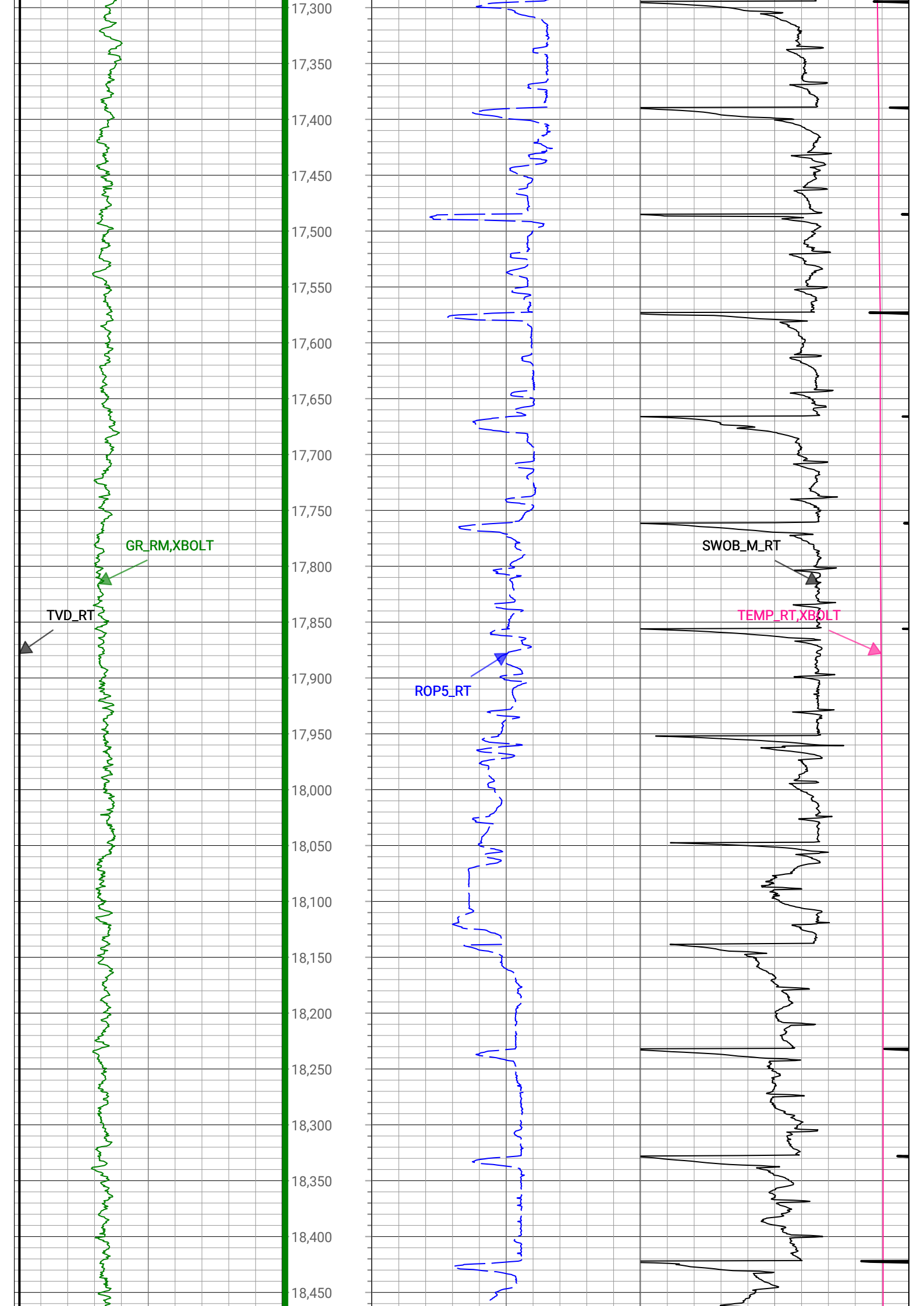


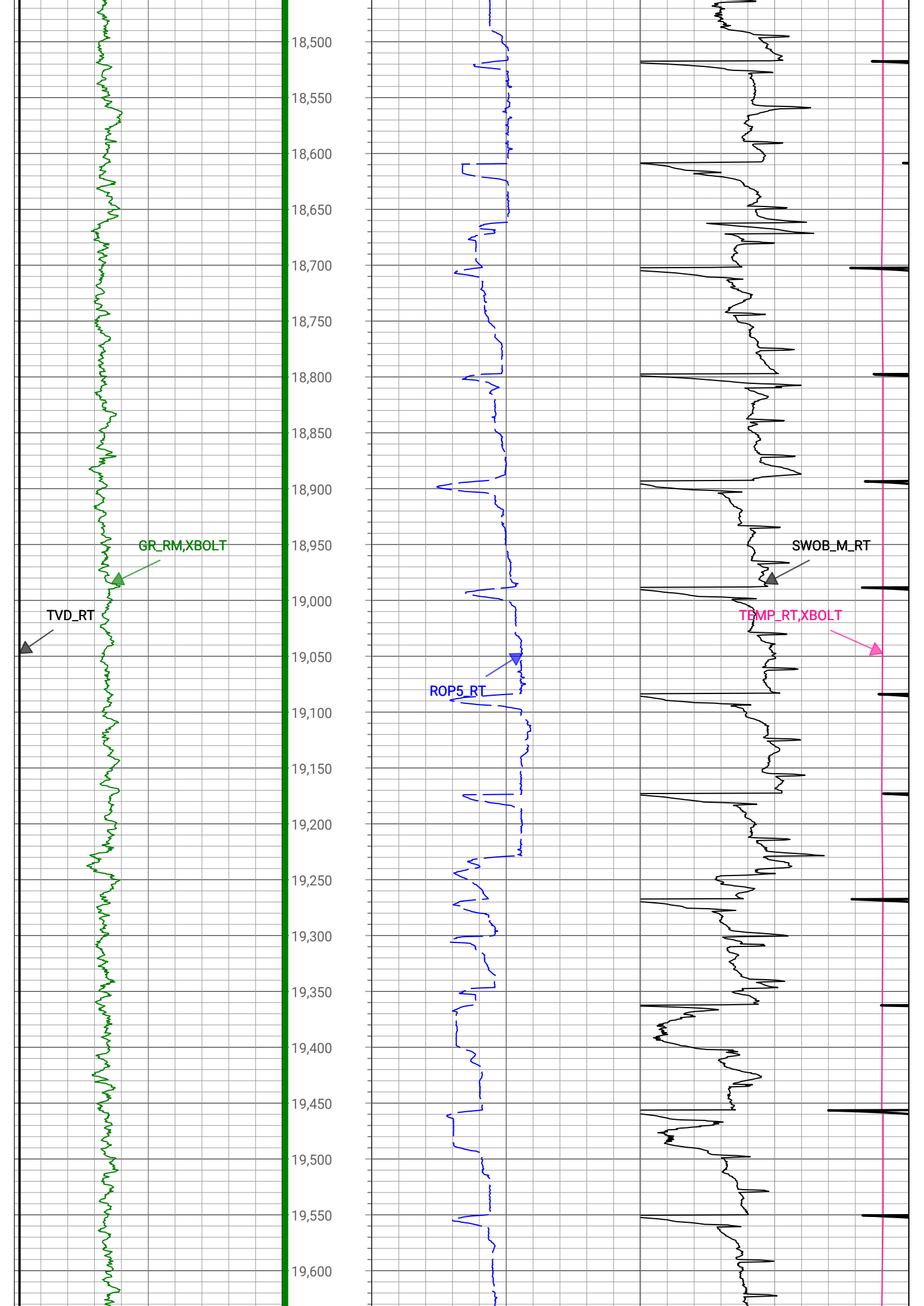


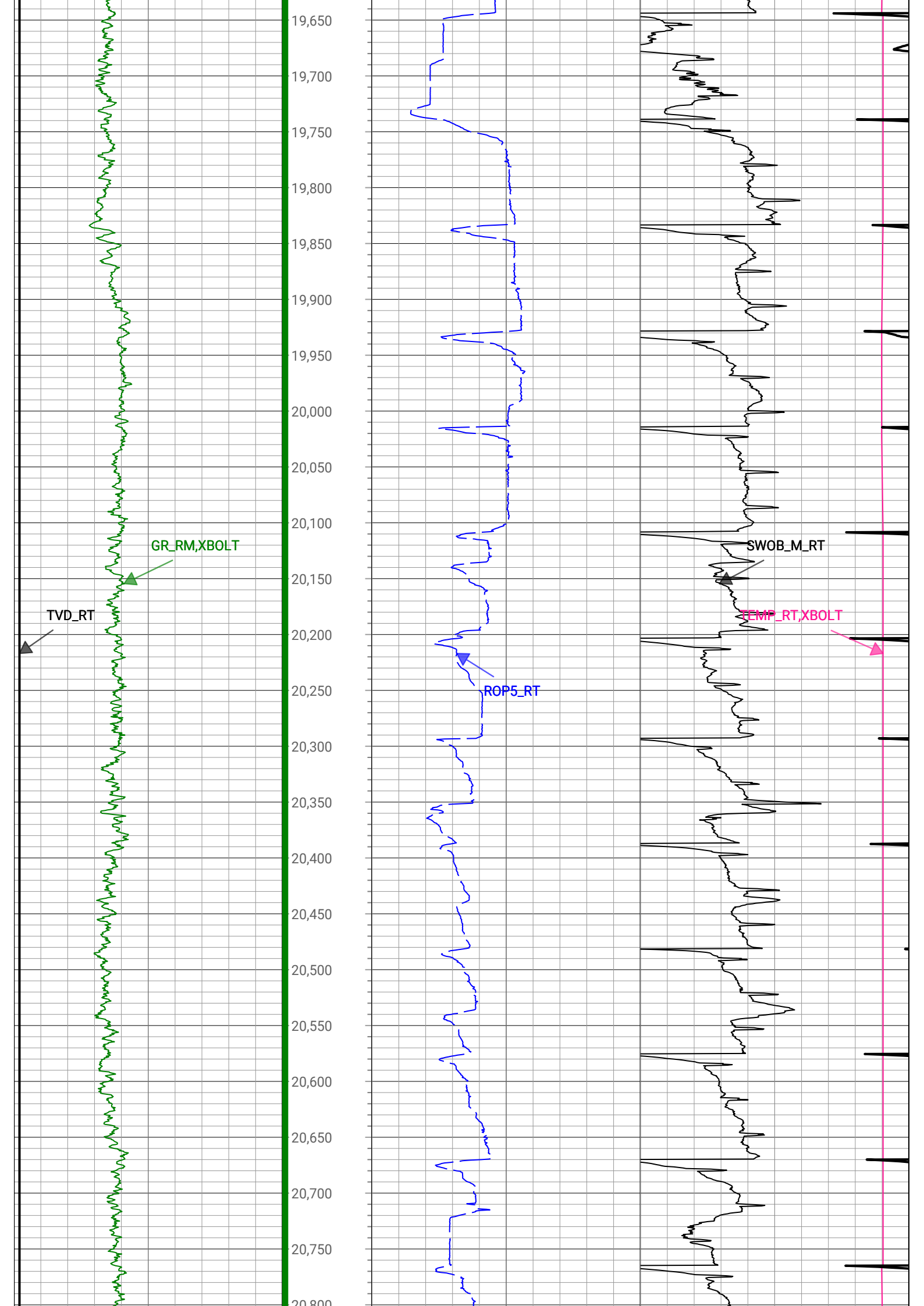


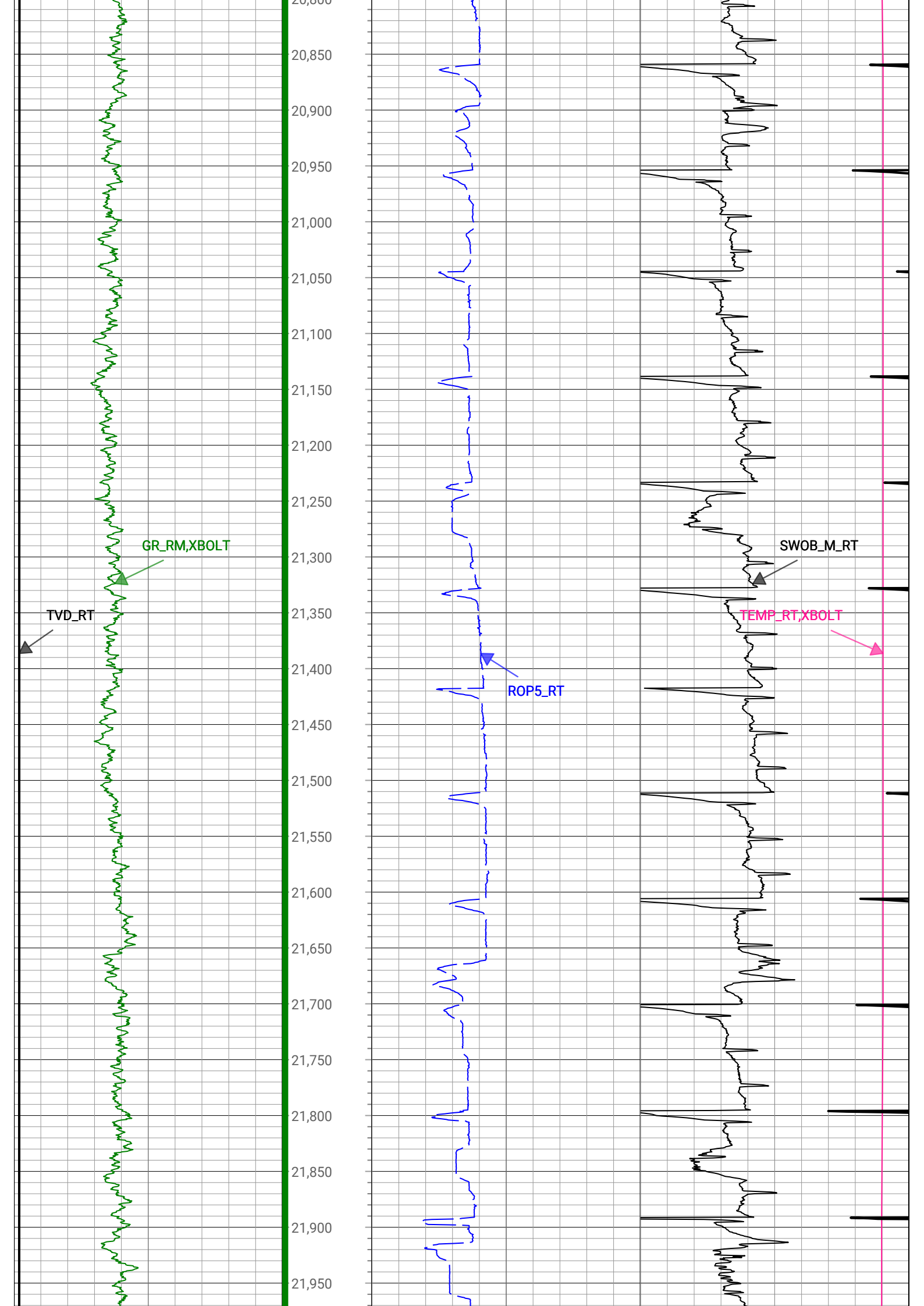


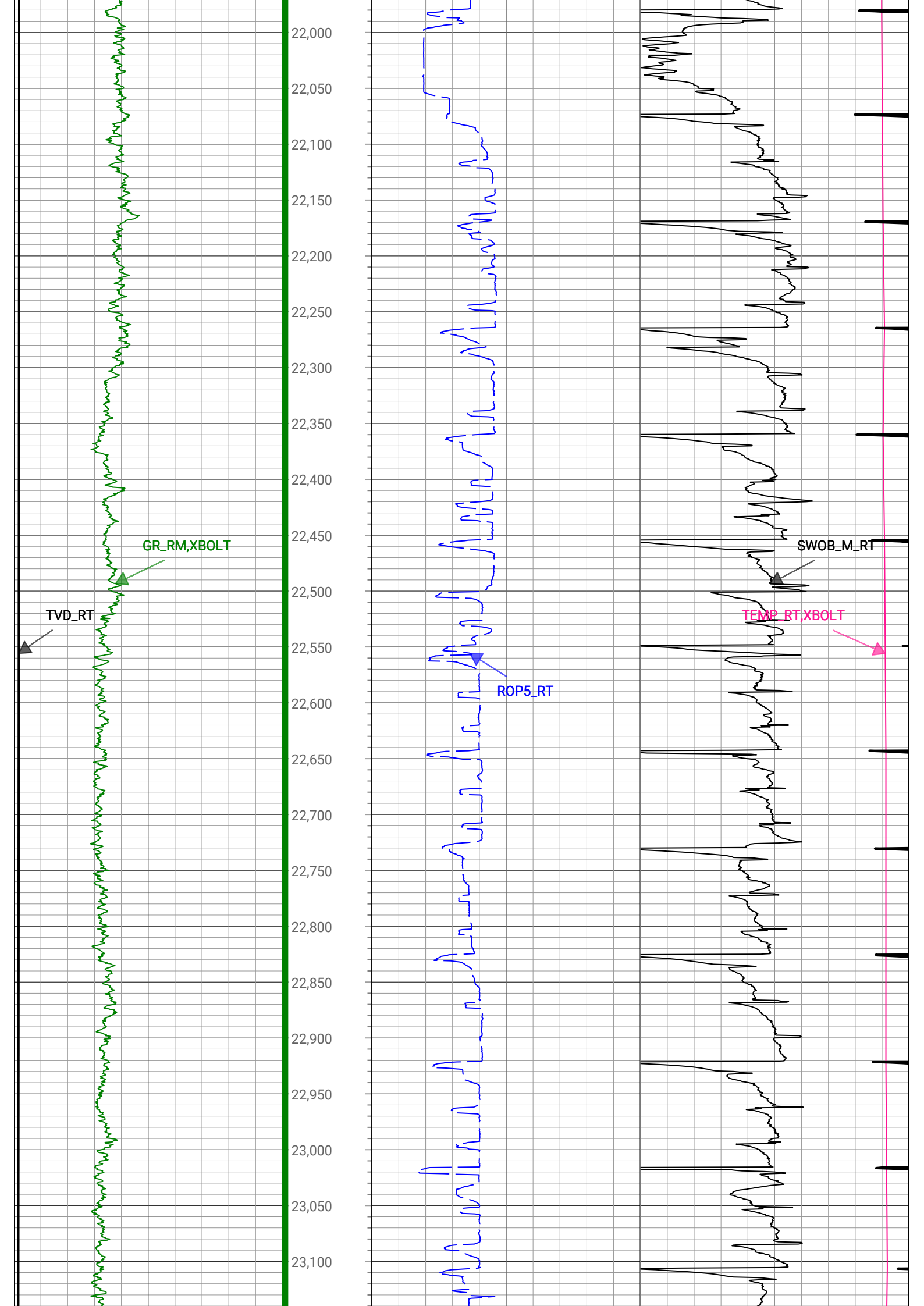


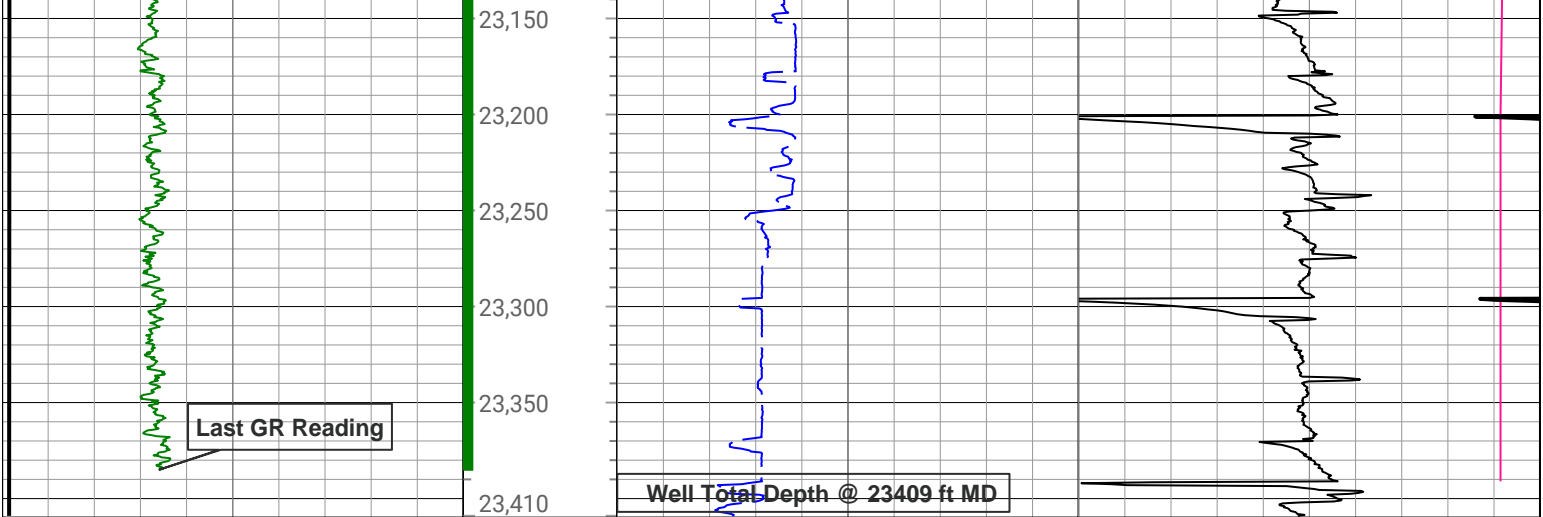












1,500	TVD_RT	7,500	Depth (ft)	0	ROP5_RT	1,000	0	TEMP_RT,XBOLT	300
ft, Borehole				ft/h, Borehole			degF, Borehole		
0	GR_RM,XBOLT	300					0	SWOB_M_RT	50
gAPI, Borehole						1000 lbm, Borehole			

Description: Xbolt GAMMA RAY Format: XBOLT_PDC Index Scale: 1in/100ft Index Unit: ft Index Type: Measured Depth
 Creation Date: 09-May-2023

Survey Record

Survey Calculation

North Reference: True North

Tie In Point

Measured Depth:	0 (ft)	Inclination:	0 (deg)	Azimuth:	0 (deg)
True Vertical Depth:	0 (ft)	North Displacement:	0 (ft)	East Displacement:	0 (ft)

D&I Inits - Run - 1

Geomagnetic Model:	HDGM 2023	Geomagnetic Date:	31-Mar-2023 18:00:00
Location B:	51522 (nT)	Location G:	998.982 (mgn)
Magnetic Dip:	66.1 (deg)	Magnetic Dec:	7.691 (deg)
Total Correction:	7.691		

MD(ft)	Incl(deg)	Azim(deg)	TVD(ft)	V Sec(ft)	N/-S(ft)	E/-W(ft)	DLS (deg/100ft)	Closure Distance (ft)	Closure Azimuth (deg)	Tool Type
0	0	0	0	0.00	0	0	0.00			TIP
160	0.6	186	160	0.02	-0.83	-0.09	0.37	0.84	186	MWD
252	1.1	176.9	251.99	0.19	-2.19	-0.09	0.56	2.2	182.35	MWD
343	2.6	154.8	342.94	1.46	-4.93	0.84	1.8	5	170.38	MWD
459	5	146.8	458.67	6.15	-11.55	4.72	2.11	12.47	157.74	MWD
544	4	159.9	543.41	9.92	-17.43	7.77	1.68	19.08	155.97	MWD
629	5.8	164.2	628.1	12.97	-24.35	9.96	2.16	26.31	157.75	MWD
714	6.9	153	712.58	17.53	-33.03	13.45	1.94	35.66	157.85	MWD
799	10.2	151	796.62	24.86	-44.16	19.42	3.9	48.24	156.27	MWD
884	13.4	145.7	879.82	35.86	-58.89	28.62	3.97	65.47	154.08	MWD
969	16.3	143	961.97	50.73	-76.55	41.35	3.51	87.01	151.62	MWD
1054	17.7	143.5	1043.26	68	-96.47	56.22	1.66	111.65	149.77	MWD
1140	18.2	138.6	1125.08	87.14	-117.05	72.87	1.85	137.88	148.09	MWD
1225	18.4	140	1205.78	106.97	-137.29	90.28	0.57	164.31	146.67	MWD
1310	17.2	135.8	1286.71	126.66	-156.58	107.66	2.07	190.02	145.49	MWD
1395	17	135.9	1367.95	146.2	-174.51	125.07	0.24	214.7	144.37	MWD
1480	15.8	139.1	1449.49	164.54	-192.18	141.3	1.77	238.53	143.68	MWD
1565	16.1	140.7	1531.22	181.72	-212.25	156.24	2.12	261.24	142.24	MWD

1565	16.1	140.7	1531.22	181.73	-210.05	156.34	0.63	261.84	143.34	MWD
1651	17.1	142.1	1613.64	199.36	-229.25	171.66	1.25	286.4	143.18	MWD
1736	18.1	145.1	1694.66	217.09	-249.94	186.89	1.59	312.09	143.21	MWD
1826	17.9	145.4	1780.25	235.72	-272.79	202.74	0.24	339.88	143.38	MWD
1911	15.7	150.9	1861.63	251.27	-293.6	215.76	3.19	364.35	143.69	MWD
1996	15	158.8	1943.6	263.34	-313.91	225.33	2.59	386.41	144.33	MWD
2081	15.2	166.5	2025.68	272.54	-335	231.91	2.37	407.44	145.31	MWD
2104	14.9	167.8	2047.89	274.6	-340.82	233.24	1.96	412.99	145.61	MWD
2247	13.44	169.33	2186.53	285.86	-375.12	240.2	1.05	445.44	147.37	Manual
2342	12.75	165.31	2279.06	293.18	-396.11	244.9	1.2	465.71	148.27	Manual
2437	12.51	168.06	2371.77	300.5	-416.32	249.69	0.68	485.46	149.05	Manual
2531	15.65	167.85	2462.93	308.07	-438.68	254.46	3.34	507.14	149.88	Manual
2626	17.15	172.72	2554.07	315.86	-465.1	258.94	2.14	532.33	150.89	Manual
2721	17.96	176.43	2644.65	322.14	-493.62	261.62	1.45	558.66	152.08	Manual
2816	18.13	183.86	2734.98	325.79	-522.99	261.54	2.43	584.74	153.43	Manual
2911	17.05	181.85	2825.54	327.99	-551.66	260.1	1.3	609.9	154.76	Manual
3005	16.34	185.06	2915.58	329.81	-578.6	258.48	1.24	633.71	155.93	Manual
3100	17.04	185.22	3006.58	330.84	-605.77	256.04	0.74	657.66	157.09	Manual
3195	17.77	189.28	3097.23	330.84	-633.94	252.44	1.49	682.36	158.29	Manual
3290	17.99	192.1	3187.65	329.1	-662.6	247.02	0.94	707.15	159.55	Manual
3383	17.83	192.53	3276.14	326.6	-690.54	240.92	0.22	731.36	160.77	Manual
3477	17.63	192.17	3365.67	324.07	-718.5	234.8	0.24	755.89	161.9	Manual
3572	17.79	192.61	3456.17	321.5	-746.73	228.6	0.22	780.93	162.98	Manual
3667	17.79	190.06	3546.63	319.46	-775.18	222.9	0.82	806.59	163.96	Manual
3760	17.1	190.88	3635.35	317.91	-802.6	217.83	0.79	831.63	164.82	Manual
3854	16.65	190.31	3725.3	316.34	-829.42	212.81	0.51	856.28	165.61	Manual
3948	16.7	188.72	3815.35	315.29	-856.02	208.36	0.49	881.01	166.32	Manual
4042	16.41	186.36	3905.46	315.17	-882.56	204.84	0.78	906.02	166.93	Manual
4135	16.67	188.9	3994.61	315.01	-908.8	201.32	0.83	930.83	167.51	Manual
4229	16.64	190.38	4084.67	313.91	-935.36	196.81	0.45	955.84	168.12	Manual
4323	17.07	190.64	4174.63	312.37	-962.15	191.84	0.46	981.09	168.72	Manual
4416	16.3	188.99	4263.71	311.19	-988.46	187.28	0.97	1006.04	169.27	Manual
4510	16.3	188.6	4353.93	310.5	-1014.53	183.24	0.12	1030.95	169.76	Manual
4604	16.79	189.09	4444.04	309.77	-1040.98	179.12	0.54	1056.28	170.24	Manual
4698	16.93	191.05	4534	308.44	-1067.82	174.36	0.62	1081.96	170.73	Manual
4792	16.77	189.58	4623.97	307	-1094.63	169.48	0.48	1107.67	171.2	Manual
4886	16.69	188.47	4713.99	306.18	-1121.35	165.23	0.35	1133.46	171.62	Manual
4980	16.8	189.78	4804	305.32	-1148.09	160.94	0.42	1159.31	172.02	Manual
5074	16.76	188.17	4894	304.52	-1174.89	156.7	0.5	1185.29	172.4	Manual
5168	16.82	190.89	4983.99	303.46	-1201.66	152.21	0.84	1211.26	172.78	Manual
5262	16.4	187.42	5074.07	302.57	-1228.18	147.92	1.15	1237.05	173.13	Manual
5355	16.58	191.12	5163.25	301.66	-1254.21	143.67	1.15	1262.42	173.47	Manual
5450	16.76	187.19	5254.26	300.77	-1281.1	139.34	1.2	1288.66	173.79	Manual
5545	16.53	188.93	5345.28	300.41	-1308.05	135.53	0.58	1315.05	174.08	Manual
5639	16.93	188.62	5435.3	299.71	-1334.79	131.4	0.44	1341.24	174.38	Manual
5733	17.18	188.84	5525.17	299.02	-1362.04	127.22	0.27	1367.97	174.66	Manual
5827	17.01	187.95	5615.02	298.48	-1389.37	123.18	0.33	1394.82	174.93	Manual
5921	16.19	187.34	5705.1	298.31	-1415.99	119.6	0.89	1421.03	175.17	Manual
6015	16.16	186.27	5795.38	298.54	-1441.99	116.5	0.32	1446.69	175.38	Manual
6109	17.23	188.3	5885.41	298.52	-1468.77	113.06	1.3	1473.11	175.6	Manual

6203	16.6	188.97	5975.35	297.88	-1495.81	108.96	0.7	1499.77	175.83	Manual
6296	16.85	189.92	6064.41	296.88	-1522.21	104.57	0.4	1525.79	176.07	Manual
6391	16.58	187.09	6155.4	296.29	-1549.22	100.52	0.9	1552.48	176.29	Manual
6485	16.41	187.89	6245.53	296.2	-1575.68	97.04	0.3	1578.67	176.48	Manual
6579	16.72	189.6	6335.63	295.52	-1602.17	92.97	0.61	1604.86	176.68	Manual
6673	17.04	188.23	6425.58	294.74	-1629.13	88.74	0.54	1631.54	176.88	Manual
6767	17.09	188.82	6515.44	294.15	-1656.41	84.65	0.19	1658.57	177.07	Manual
6861	17.36	189.32	6605.23	293.28	-1683.9	80.26	0.33	1685.81	177.27	Manual
6955	16.59	188.54	6695.13	292.49	-1711.01	76	0.85	1712.69	177.46	Manual
7049	17.36	190.34	6785.04	291.46	-1738.07	71.49	0.99	1739.54	177.64	Manual
7143	17.17	189.27	6874.8	290.23	-1765.56	66.73	0.39	1766.82	177.84	Manual
7237	17.99	179.17	6964.43	291.8	-1793.78	64.71	3.36	1794.95	177.93	Manual
7331	19.19	151.89	7053.69	302.82	-1821.97	72.21	9.26	1823.4	177.73	Manual
7426	20.07	136.19	7143.23	324.57	-1847.53	90.87	5.61	1849.76	177.18	Manual
7520	27.3	128.24	7229.28	355.66	-1872.55	119.01	8.39	1876.33	176.36	Manual
7615	29.04	115.13	7313.11	396.33	-1895.85	157.03	6.75	1902.34	175.26	Manual
7709	35.82	108.89	7392.42	445.06	-1914.47	203.78	8.04	1925.28	173.92	Manual
7805	44.84	107.08	7465.53	506.06	-1933.55	262.84	9.47	1951.33	172.26	Manual
7899	55.59	106.8	7525.6	577.17	-1954.55	331.84	11.44	1982.52	170.36	Manual
7993	62.45	102.71	7573.97	657.02	-1974.95	409.73	8.19	2017.01	168.28	Manual
8086	69.41	98.65	7611.89	741.72	-1990.6	493.11	8.48	2050.76	166.09	Manual
8180	76.57	96.26	7639.37	831.54	-2002.22	582.18	8	2085.14	163.79	Manual
8274	84.9	93.19	7654.5	924.12	-2009.82	674.55	9.43	2120	161.45	Manual
8368	88.72	93.14	7659.73	1017.72	-2015	768.24	4.06	2156.48	159.13	Manual
8462	89.84	91.01	7660.91	1111.31	-2018.4	862.16	2.56	2194.83	156.87	Manual
8556	90.34	90.37	7660.76	1204.69	-2019.54	956.16	0.86	2234.45	154.66	Manual
8649	90.16	90.08	7660.35	1296.98	-2019.9	1049.16	0.37	2276.12	152.55	Manual
8743	90.26	90.48	7660.01	1390.28	-2020.36	1143.15	0.44	2321.35	150.5	Manual
8837	90.1	90.04	7659.71	1483.57	-2020.79	1237.15	0.5	2369.41	148.52	Manual
8930	90.13	90.38	7659.53	1575.86	-2021.13	1330.15	0.37	2419.56	146.65	Manual
9023	90.43	90.27	7659.07	1668.17	-2021.66	1423.15	0.34	2472.34	144.86	Manual
9116	89.93	90.33	7658.78	1760.48	-2022.14	1516.15	0.54	2527.4	143.14	Manual
9209	90	90.02	7658.84	1852.77	-2022.43	1609.15	0.34	2584.48	141.49	Manual
9303	88.46	89.69	7660.1	1945.96	-2022.19	1703.13	1.68	2643.84	139.9	Manual
9397	88.09	90.01	7662.93	2039.13	-2021.94	1797.09	0.52	2705.14	138.37	Manual
9491	88.09	89.81	7666.06	2132.3	-2021.8	1891.04	0.21	2768.34	136.91	Manual
9585	88.29	89.72	7669.03	2225.44	-2021.41	1984.99	0.23	2833.07	135.52	Manual
9680	88.06	90.04	7672.06	2319.6	-2021.21	2079.94	0.41	2900.25	134.18	Manual
9774	87.95	89.98	7675.33	2412.79	-2021.23	2173.88	0.13	2968.36	132.92	Manual
9869	89.3	90.53	7677.61	2507.04	-2021.65	2268.85	1.53	3038.88	131.7	Manual
9964	88.57	90.92	7679.38	2601.4	-2022.85	2363.83	0.87	3111.21	130.56	Manual
10058	90.23	89.48	7680.36	2694.67	-2023.18	2457.82	2.34	3183.41	129.46	Manual
10153	91.42	89.52	7678.99	2788.79	-2022.35	2552.8	1.25	3256.79	128.39	Manual
10247	90.92	90.09	7677.07	2881.96	-2022.03	2646.78	0.81	3330.77	127.38	Manual
10340	91.32	88.86	7675.25	2974.08	-2021.18	2739.76	1.39	3404.62	126.42	Manual
10432	90.88	88.56	7673.49	3065.03	-2019.11	2831.72	0.58	3477.85	125.49	Manual
10525	90.21	89.3	7672.6	3157.04	-2017.37	2924.7	1.07	3552.98	124.6	Manual
10617	90	90.42	7672.44	3248.27	-2017.15	3016.69	1.24	3628.96	123.77	Manual
10710	90.74	89.54	7671.83	3340.51	-2017.11	3109.69	1.24	3706.61	122.97	Manual
10803	90.36	89.4	7670.94	3432.64	-2016.25	3202.68	0.44	3784.5	122.19	Manual

10896	89.6	90.04	7670.97	3524.83	-2015.8	3295.68	1.07	3863.28	121.45	Manual
10990	89.85	89.82	7671.43	3618.05	-2015.69	3389.68	0.35	3943.72	120.74	Manual
11082	90.59	89.73	7671.07	3709.26	-2015.32	3481.68	0.81	4022.88	120.06	Manual
11177	90.79	88.92	7669.93	3803.34	-2014.2	3576.66	0.88	4104.82	119.39	Manual
11272	90	90.2	7669.27	3897.47	-2013.48	3671.65	1.58	4187.5	118.74	Manual
11366	90.34	90.19	7668.99	3990.75	-2013.8	3765.65	0.36	4270.31	118.14	Manual
11461	90.65	89.89	7668.17	4084.98	-2013.86	3860.65	0.45	4354.34	117.55	Manual
11555	90.6	89.65	7667.15	4178.17	-2013.48	3954.64	0.26	4437.72	116.98	Manual
11650	91.12	88.93	7665.72	4272.23	-2012.31	4049.62	0.93	4522.04	116.42	Manual
11743	90.37	89.8	7664.51	4364.34	-2011.28	4142.61	1.24	4605.04	115.9	Manual
11837	90.7	90.31	7663.64	4457.58	-2011.37	4236.6	0.65	4689.82	115.4	Manual
11932	90.34	90.42	7662.77	4551.89	-2011.97	4331.6	0.4	4776.06	114.91	Manual
12025	90.09	90.31	7662.42	4644.21	-2012.56	4424.6	0.29	4860.81	114.46	Manual
12119	90.3	89.85	7662.1	4737.46	-2012.7	4518.59	0.54	4946.58	114.01	Manual
12213	90.76	89.4	7661.24	4830.62	-2012.08	4612.59	0.68	5032.34	113.57	Manual
12306	89.78	89.6	7660.8	4922.76	-2011.27	4705.58	1.08	5117.39	113.14	Manual
12400	90.21	89.61	7660.8	5015.91	-2010.62	4799.58	0.46	5203.71	112.73	Manual
12493	90.35	89.19	7660.35	5108.03	-2009.65	4892.57	0.48	5289.23	112.33	Manual
12587	89.99	89.78	7660.07	5201.16	-2008.8	4986.57	0.74	5375.98	111.94	Manual
12680	90.66	88.76	7659.54	5293.25	-2007.62	5079.56	1.31	5461.91	111.57	Manual
12773	90.35	89.11	7658.72	5385.26	-2005.89	5172.54	0.5	5547.86	111.2	Manual
12866	89.9	89.63	7658.52	5477.37	-2004.87	5265.53	0.74	5634.3	110.84	Manual
12959	90.05	89.44	7658.56	5569.52	-2004.11	5358.53	0.26	5721.04	110.51	Manual
13052	89.86	89.97	7658.64	5661.7	-2003.63	5451.53	0.61	5808.07	110.18	Manual
13145	90.02	89.58	7658.73	5753.9	-2003.27	5544.53	0.45	5895.32	109.87	Manual
13237	89.86	90.06	7658.83	5845.12	-2002.98	5636.52	0.55	5981.83	109.56	Manual
13330	90.06	90.37	7658.89	5937.42	-2003.33	5729.52	0.4	6069.66	109.27	Manual
13423	89.85	90.36	7658.97	6029.74	-2003.92	5822.52	0.23	6157.72	108.99	Manual
13516	90.25	89.85	7658.89	6122.01	-2004.09	5915.52	0.7	6245.78	108.72	Manual
13701	89.7	89.8	7658.97	6305.44	-2003.53	6100.52	0.3	6421.09	108.18	Manual
13795	90.13	90.26	7659.11	6398.68	-2003.57	6194.52	0.67	6510.48	107.92	Manual
13889	90.21	89.98	7658.83	6491.95	-2003.77	6288.52	0.31	6600.04	107.67	Manual
13983	90.29	90.24	7658.42	6585.21	-2003.95	6382.52	0.29	6689.72	107.43	Manual
14076	90.18	90.08	7658.04	6677.49	-2004.21	6475.52	0.21	6778.58	107.2	Manual
14170	90.26	90.05	7657.67	6770.74	-2004.32	6569.52	0.09	6868.47	106.97	Manual
14264	90.6	89.9	7656.97	6863.97	-2004.28	6663.51	0.4	6958.41	106.74	Manual
14452	90.4	90.05	7655.33	7050.44	-2004.2	6851.51	0.13	7138.62	106.31	Manual
14640	90.16	89.48	7654.41	7236.81	-2003.42	7039.5	0.33	7319.03	105.89	Manual
14734	90.04	90.01	7654.25	7330	-2003.01	7133.5	0.58	7409.38	105.68	Manual
14828	89.88	90.31	7654.31	7423.27	-2003.27	7227.5	0.36	7499.99	105.49	Manual
14922	89.9	90.16	7654.49	7516.56	-2003.65	7321.5	0.16	7590.71	105.31	Manual
15016	89.82	90.17	7654.72	7609.84	-2003.92	7415.5	0.09	7681.49	105.12	Manual
15108	89.75	90.36	7655.07	7701.14	-2004.35	7507.49	0.22	7770.45	104.95	Manual
15201	89.69	90.13	7655.52	7793.44	-2004.75	7600.49	0.26	7860.44	104.78	Manual
15294	90.38	89.91	7655.46	7885.69	-2004.78	7693.49	0.78	7950.41	104.61	Manual
15388	90.69	89.93	7654.59	7978.91	-2004.65	7787.49	0.33	8041.37	104.44	Manual
15480	90.69	89.9	7653.48	8070.14	-2004.51	7879.48	0.03	8130.45	104.27	Manual
15666	90.96	90.07	7650.8	8254.61	-2004.46	8065.46	0.17	8310.81	103.96	Manual
15758	90.8	90.22	7649.39	8345.89	-2004.7	8157.45	0.24	8400.17	103.81	Manual
15943	91.15	90.22	7646.24	8529.46	-2005.41	8342.42	0.19	8580.07	103.52	Manual

16129	90.76	89.96	7643.14	8713.96	-2005.7	8528.4	0.25	8761.07	103.23	Manual
16223	90.43	90.43	7642.16	8807.24	-2006.02	8622.39	0.61	8852.67	103.1	Manual
16317	91.09	89.93	7640.92	8900.51	-2006.31	8716.38	0.88	8944.3	102.96	Manual
16412	90.01	90.52	7640	8994.78	-2006.69	8811.37	1.3	9036.98	102.83	Manual
16506	89.73	89.59	7640.22	9088.03	-2006.78	8905.37	1.03	9128.68	102.7	Manual
16600	89.8	90.15	7640.6	9181.24	-2006.56	8999.37	0.6	9220.36	102.57	Manual
16694	90.16	89.88	7640.64	9274.48	-2006.59	9093.37	0.48	9312.13	102.44	Manual
16789	90.86	89.99	7639.79	9368.7	-2006.48	9188.37	0.75	9404.89	102.32	Manual
16883	91	90.08	7638.26	9461.93	-2006.54	9282.35	0.18	9496.75	102.2	Manual
16978	90.83	90.4	7636.75	9556.2	-2006.94	9377.34	0.38	9589.7	102.08	Manual
17072	90.88	89.99	7635.35	9649.47	-2007.26	9471.33	0.44	9681.69	101.97	Manual
17166	90.93	90.21	7633.86	9742.72	-2007.42	9565.32	0.24	9773.69	101.85	Manual
17261	90.73	89.71	7632.48	9836.93	-2007.35	9660.31	0.57	9866.66	101.74	Manual
17355	90.87	90.49	7631.17	9930.19	-2007.52	9754.3	0.84	9958.74	101.63	Manual
17449	90.6	89.38	7629.97	10023.4	-2007.41	9848.29	1.22	10050.79	101.52	Manual
17543	91.23	90.18	7628.46	10116.58	-2007.05	9942.27	1.08	10142.83	101.41	Manual
17637	90.75	90.24	7626.84	10209.85	-2007.39	10036.26	0.51	10235.04	101.31	Manual
17731	90.9	90.01	7625.49	10303.11	-2007.6	10130.25	0.29	10327.26	101.21	Manual
17825	90.87	90.35	7624.04	10396.37	-2007.9	10224.24	0.36	10419.53	101.11	Manual
17920	90.78	89.8	7622.67	10490.61	-2008.02	10319.23	0.59	10512.78	101.01	Manual
18014	90.46	89.28	7621.65	10583.75	-2007.26	10413.22	0.65	10604.91	100.91	Manual
18108	89.5	88.77	7621.68	10676.77	-2005.67	10507.2	1.16	10696.91	100.81	Manual
18202	90.3	90.81	7621.85	10769.96	-2005.32	10601.2	2.33	10789.19	100.71	Manual
18296	89.82	89.91	7621.75	10863.27	-2005.91	10695.19	1.09	10881.67	100.62	Manual
18390	89.8	89.9	7622.06	10956.49	-2005.76	10789.19	0.02	10974.05	100.53	Manual
18484	89.83	90.24	7622.36	11049.75	-2005.87	10883.19	0.36	11066.5	100.44	Manual
18578	90.13	90.75	7622.4	11143.09	-2006.68	10977.19	0.63	11159.1	100.36	Manual
18673	90.2	90.96	7622.12	11237.49	-2008.1	11072.18	0.23	11252.8	100.28	Manual
18767	90.17	90.8	7621.82	11330.9	-2009.54	11166.16	0.17	11345.55	100.2	Manual
18861	89.86	90.72	7621.8	11424.29	-2010.79	11260.16	0.34	11438.29	100.12	Manual
18955	89.63	90.7	7622.21	11517.67	-2011.96	11354.15	0.25	11531.03	100.05	Manual
19049	89.69	90.51	7622.77	11611.03	-2012.95	11448.14	0.21	11623.76	99.97	Manual
19143	90.04	90.59	7622.99	11704.38	-2013.85	11542.14	0.38	11716.51	99.9	Manual
19237	89.86	90.85	7623.07	11797.76	-2015.03	11636.13	0.34	11809.31	99.82	Manual
19331	89.65	90.94	7623.48	11891.17	-2016.5	11730.12	0.24	11902.18	99.75	Manual
19424	89.86	90.8	7623.87	11983.59	-2017.91	11823.1	0.27	11994.07	99.69	Manual
19518	89.94	90.57	7624.04	12076.97	-2019.04	11917.1	0.26	12086.92	99.62	Manual
19611	90.14	90.5	7623.97	12169.32	-2019.9	12010.09	0.23	12178.77	99.55	Manual
19705	90.19	91	7623.7	12262.71	-2021.13	12104.08	0.53	12271.67	99.48	Manual
19799	90.04	90.15	7623.51	12356.06	-2022.08	12198.08	0.92	12364.54	99.41	Manual
19892	89.83	90.11	7623.62	12448.34	-2022.29	12291.08	0.23	12456.33	99.34	Manual
19985	90.49	90.36	7623.36	12540.63	-2022.67	12384.08	0.76	12548.17	99.28	Manual
20078	89.88	89.66	7623.06	12632.88	-2022.69	12477.08	1	12639.96	99.21	Manual
20171	89.96	90.35	7623.19	12725.13	-2022.69	12570.07	0.75	12731.77	99.14	Manual
20263	90.31	90.06	7622.97	12816.43	-2023.02	12662.07	0.49	12822.66	99.08	Manual
20356	90.05	90.08	7622.68	12908.69	-2023.14	12755.07	0.28	12914.53	99.01	Manual
20450	89.94	90.08	7622.69	13001.94	-2023.27	12849.07	0.12	13007.39	98.95	Manual
20544	89.8	89.94	7622.9	13095.19	-2023.28	12943.07	0.21	13100.26	98.88	Manual
20637	89.88	90.28	7623.16	13187.46	-2023.46	13036.07	0.38	13192.18	98.82	Manual
20732	90.05	89.62	7623.2	13281.69	-2023.29	13131.07	0.69	13286.05	98.76	Manual

20732	89.93	89.63	7623.3	13281.68	-2023.39	13131.07	0.89	13286.05	98.76	Manual
20826	90.65	89.98	7622.81	13374.88	-2023.07	13225.07	0.83	13378.91	98.7	Manual
20919	90.68	90.08	7621.73	13467.12	-2023.12	13318.06	0.11	13470.85	98.64	Manual
21014	90.41	90.22	7620.83	13561.38	-2023.37	13413.06	0.32	13564.81	98.58	Manual
21108	90.68	89.75	7619.93	13654.62	-2023.34	13507.05	0.58	13657.76	98.52	Manual
21201	90.44	90.09	7619.02	13746.84	-2023.21	13600.05	0.45	13749.72	98.46	Manual
21293	90.4	89.71	7618.35	13838.08	-2023.05	13692.05	0.42	13840.7	98.4	Manual
21387	90.15	90.29	7617.9	13931.31	-2023.05	13786.04	0.67	13933.69	98.35	Manual
21481	90.06	89.84	7617.73	14024.57	-2023.16	13880.04	0.49	14026.72	98.29	Manual
21575	89.83	89.61	7617.82	14117.75	-2022.71	13974.04	0.35	14119.67	98.24	Manual
21668	90.2	90.21	7617.79	14209.98	-2022.56	14067.04	0.76	14211.7	98.18	Manual
21762	90.24	89.94	7617.43	14303.23	-2022.68	14161.04	0.29	14304.77	98.13	Manual
21856	90.08	89.99	7617.17	14396.47	-2022.63	14255.04	0.18	14397.82	98.08	Manual
21950	90.24	90.14	7616.91	14489.72	-2022.73	14349.04	0.23	14490.91	98.02	Manual
22044	90.13	89.85	7616.6	14582.96	-2022.72	14443.04	0.33	14583.99	97.97	Manual
22138	90.75	89.79	7615.88	14676.16	-2022.43	14537.04	0.66	14677.04	97.92	Manual
22232	91.47	90.42	7614.06	14769.4	-2022.6	14631.02	1.02	14770.16	97.87	Manual
22326	90.89	90.05	7612.12	14862.67	-2022.99	14725	0.73	14863.31	97.82	Manual
22420	91.13	90.78	7610.47	14955.98	-2023.67	14818.98	0.82	14956.51	97.78	Manual
22514	91.09	90.19	7608.65	15049.3	-2024.46	14912.96	0.63	15049.74	97.73	Manual
22608	91.1	89.95	7606.85	15142.53	-2024.58	15006.94	0.26	15142.89	97.68	Manual
22702	90.97	90.02	7605.15	15235.76	-2024.55	15100.92	0.16	15236.03	97.64	Manual
22796	91.2	89.95	7603.37	15328.98	-2024.53	15194.91	0.26	15329.18	97.59	Manual
22890	91.01	89.72	7601.56	15422.16	-2024.26	15288.89	0.32	15422.31	97.54	Manual
22982	91.2	90.39	7599.79	15513.41	-2024.35	15380.87	0.76	15513.52	97.5	Manual
23076	91.24	89.81	7597.78	15606.65	-2024.51	15474.85	0.62	15606.72	97.45	Manual
23170	90.84	90.08	7596.08	15699.87	-2024.42	15568.83	0.51	15699.9	97.41	Manual
23265	90.79	89.87	7594.73	15794.08	-2024.38	15663.82	0.23	15794.1	97.36	Manual
23358	90.97	89.48	7593.3	15886.25	-2023.85	15756.81	0.46	15886.25	97.32	Manual
23409	90.97	89.48	7592.43	15936.77	-2023.39	15807.8	0	15936.77	97.29	Manual

Company: PDC Energy Inc

Well: Brant Federal 18C

Field Name: Wattenberg

Country Name: United States

State Name: Colorado

County Name: Adams



Xbolt GAMMA RAY
1in/100ft Measured Depth
Final Print
Recorded Mode