

Xbolt GAMMA RAY
1in/100ft Measured Depth
Final Print
Recorded Mode



Company:	PDC Energy Inc	API Number:	05-001-10338
Well:	Brant Federal 17N	Rig Name:	True Drilling 41
Field Name:	Wattenberg	Rig Type:	Land rig
Country Name:	United States	Log Interval:	2036.00-23164.50(ft)
State Name:	Colorado	Depth Source:	Driller's Depth
County Name:	Adams	Log Measured From:	Drill Floor
Latitude:	39°58'50.275"N	Rig Floor above Ground Level:	25.00(ft)
Longitude:	104°50'52.350"W	Ground Level above Mean Sea Level:	4973.00 (ft)
Spud Date:	29-Mar-2023	Job Number:	0.1039768.35
Print Type:	Final Print	Northings:	1236463.54(ft)
Print Type:	Final Print	Easting:	3182745.40(ft)
Coordinate System:	Plane, Northern Zone, US Feet		

Disclaimer

THE USE OF AND RELIANCE UPON THIS RECORDED-DATA BY THE HEREIN NAMED COMPANY (AND ANY OF ITS AFFILIATES, PARTNERS, REPRESENTATIVES, AGENTS, CONSULTANTS AND EMPLOYEES) IS SUBJECT TO THE TERMS AND CONDITIONS AGREED UPON BETWEEN SLB AND THE COMPANY, INCLUDING: (a) RESTRICTIONS ON USE OF THE RECORDED-DATA; (b) DISCLAIMERS AND WAIVERS OF WARRANTIES AND REPRESENTATIONS REGARDING COMPANY'S USE AND RELIANCE UPON THE RECORDED-DATA; AND (c) CUSTOMER'S FULL AND SOLE RESPONSIBILITY FOR ANY INFERENCE DRAWN OR DECISION MADE IN CONNECTION WITH THE USE OF THIS RECORDED-DATA.

Operational Run Summary

Notes

Run 1 (Bit Size: 8.5 in)

DateTime Log Started	30-Mar-2023 01:33:13	DateTime Log Finished	02-Apr-2023 17:29:26
Start Depth (ft)	2058	Stop Depth (ft)	23165
Mud Type	Oil Based Mud	Mud Density (lbm/gal)	10.2
Potassium (%)	0	Barite	Yes
GR Sensor Offset (ft)	22.56	Calibration Coefficient	0
DNI Sensor Offset (ft)	26.2		

Log

Description: Xbolt GAMMA RAY Format: XBOLT_PDC Index Scale: 1in/100ft Index Unit: ft Index Type: Measured Depth
 Creation Date: 02-Apr-2023

TVD_RT	Depth	ROP5_RT	TEMP_RT,XBOLT
1,500 ft, Borehole	8,000	0 ft/h, Borehole	1,000 0 degF, Borehole
	1 : 100		300

GR_RM, XBOLT

in : ft

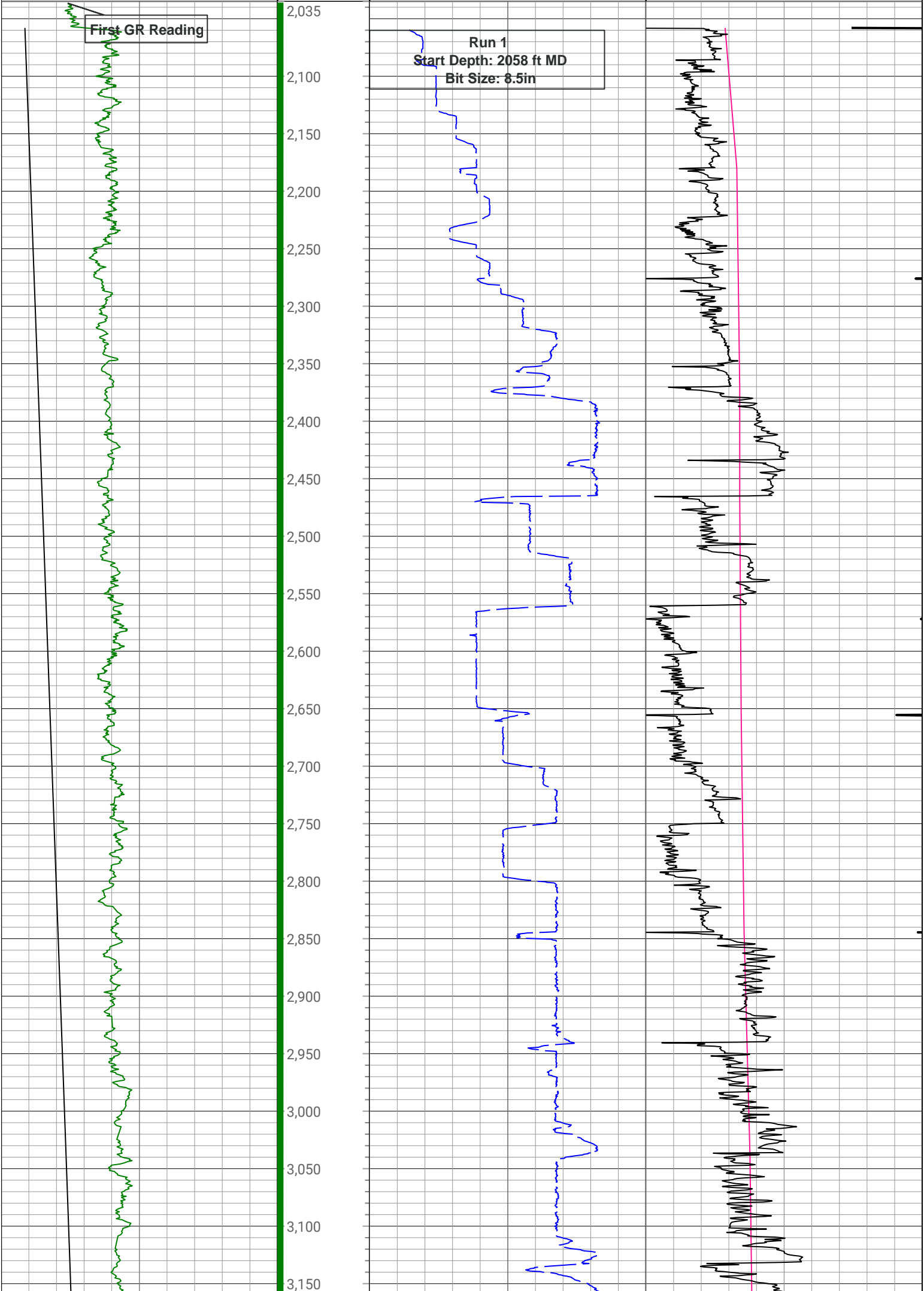
SWOB_M_RT

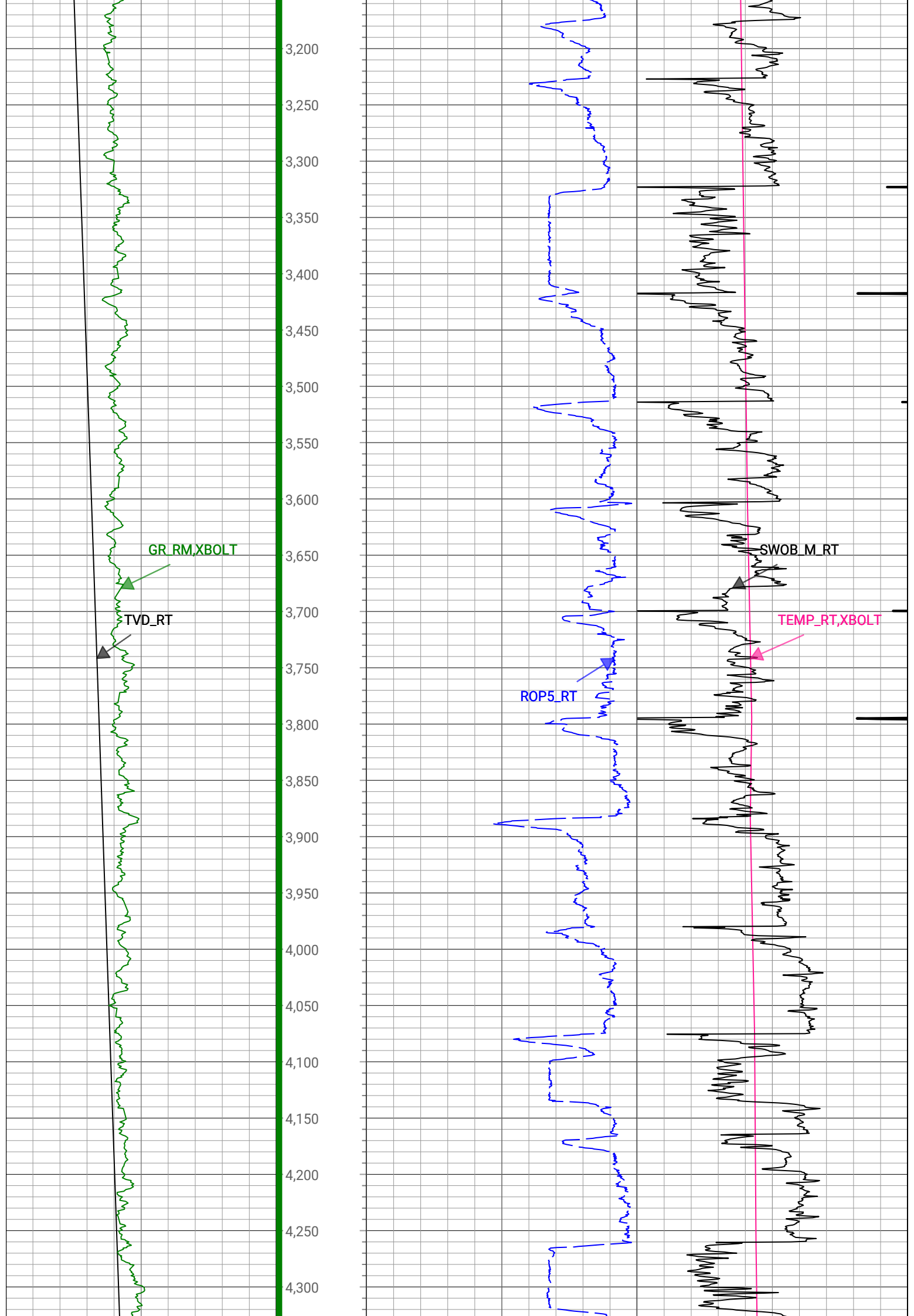
0 gAPI, Borehole 300

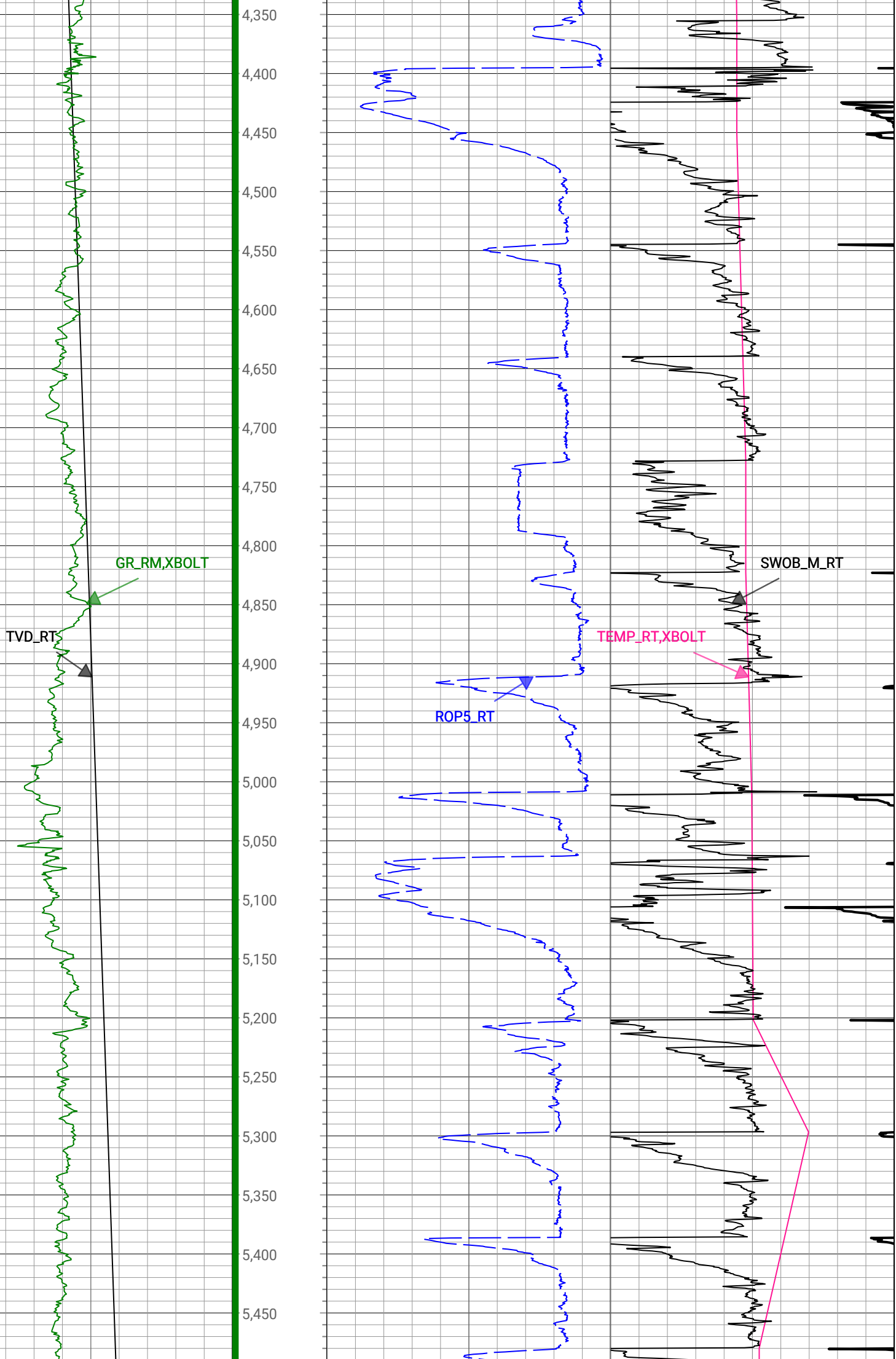
0 1000 lbm, Borehole 50

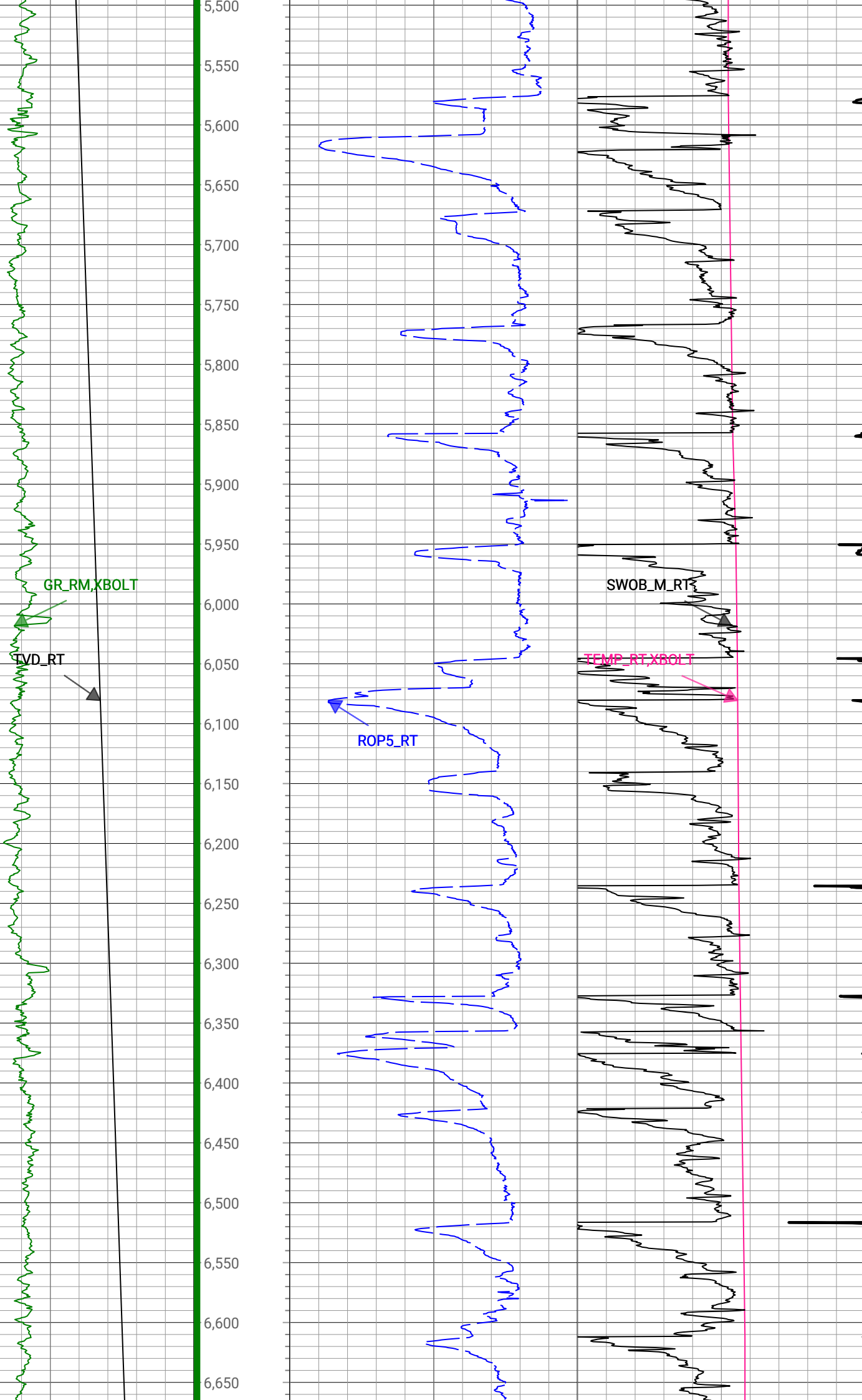
First GR Reading

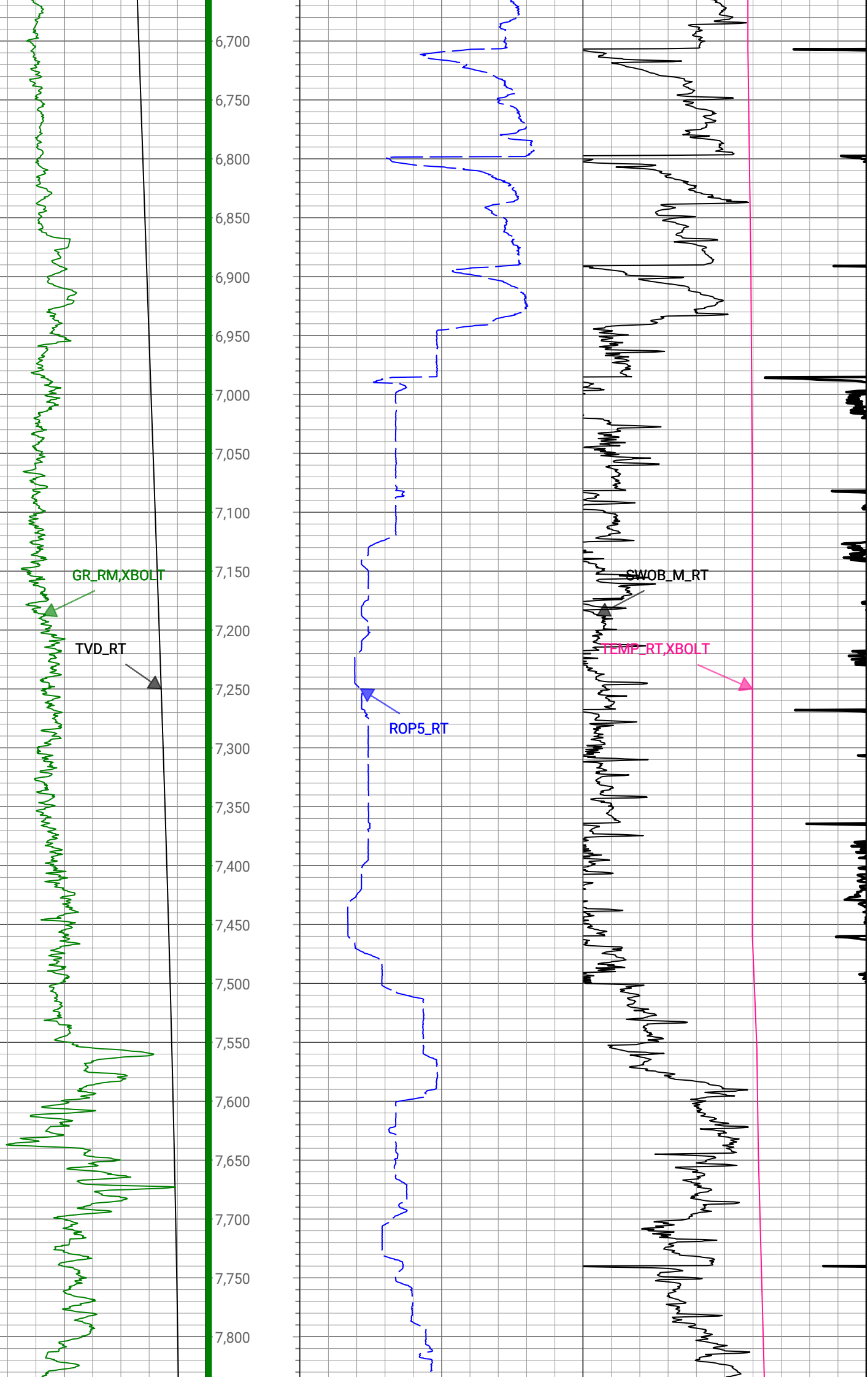
Run 1
Start Depth: 2058 ft MD
Bit Size: 8.5in

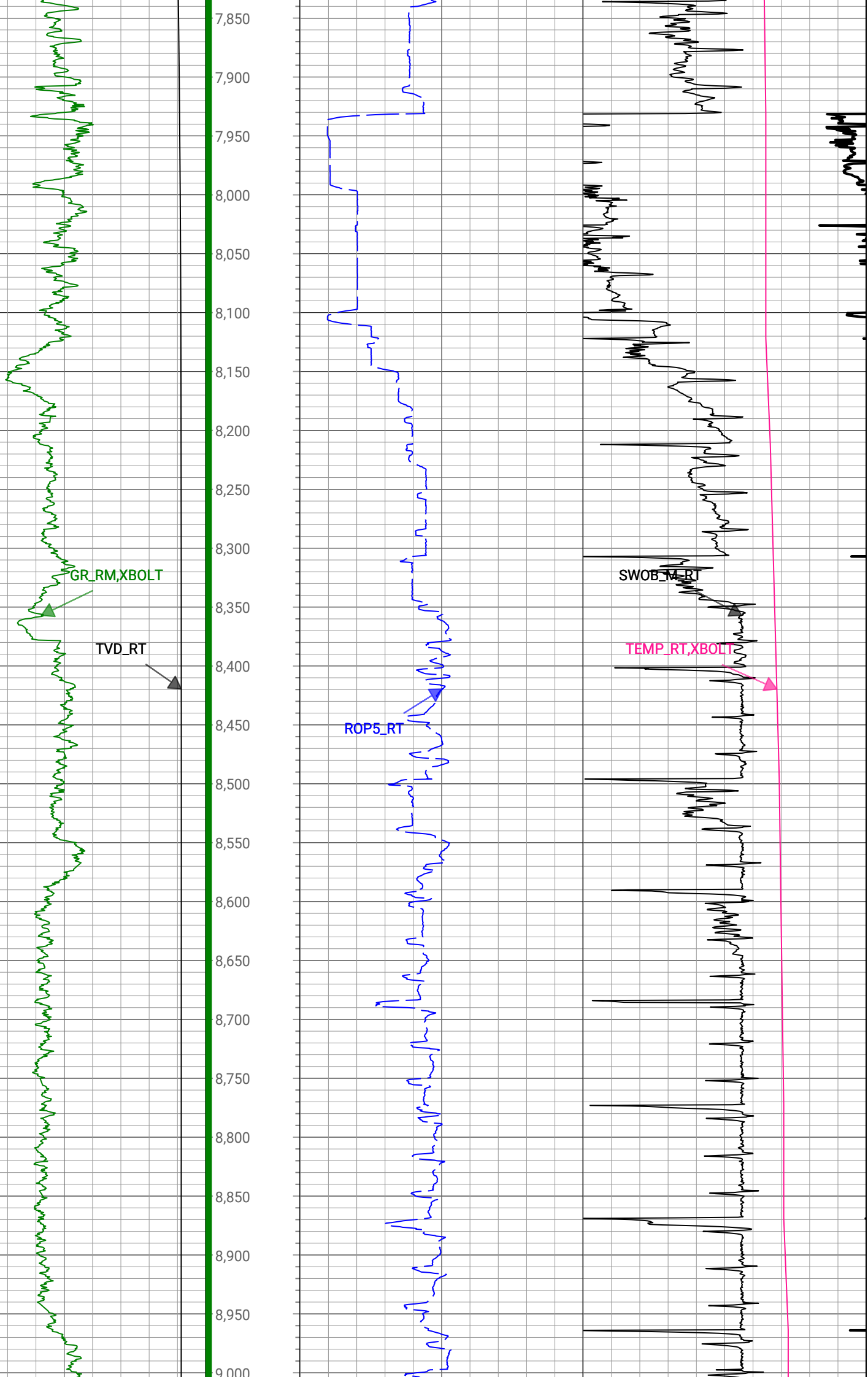


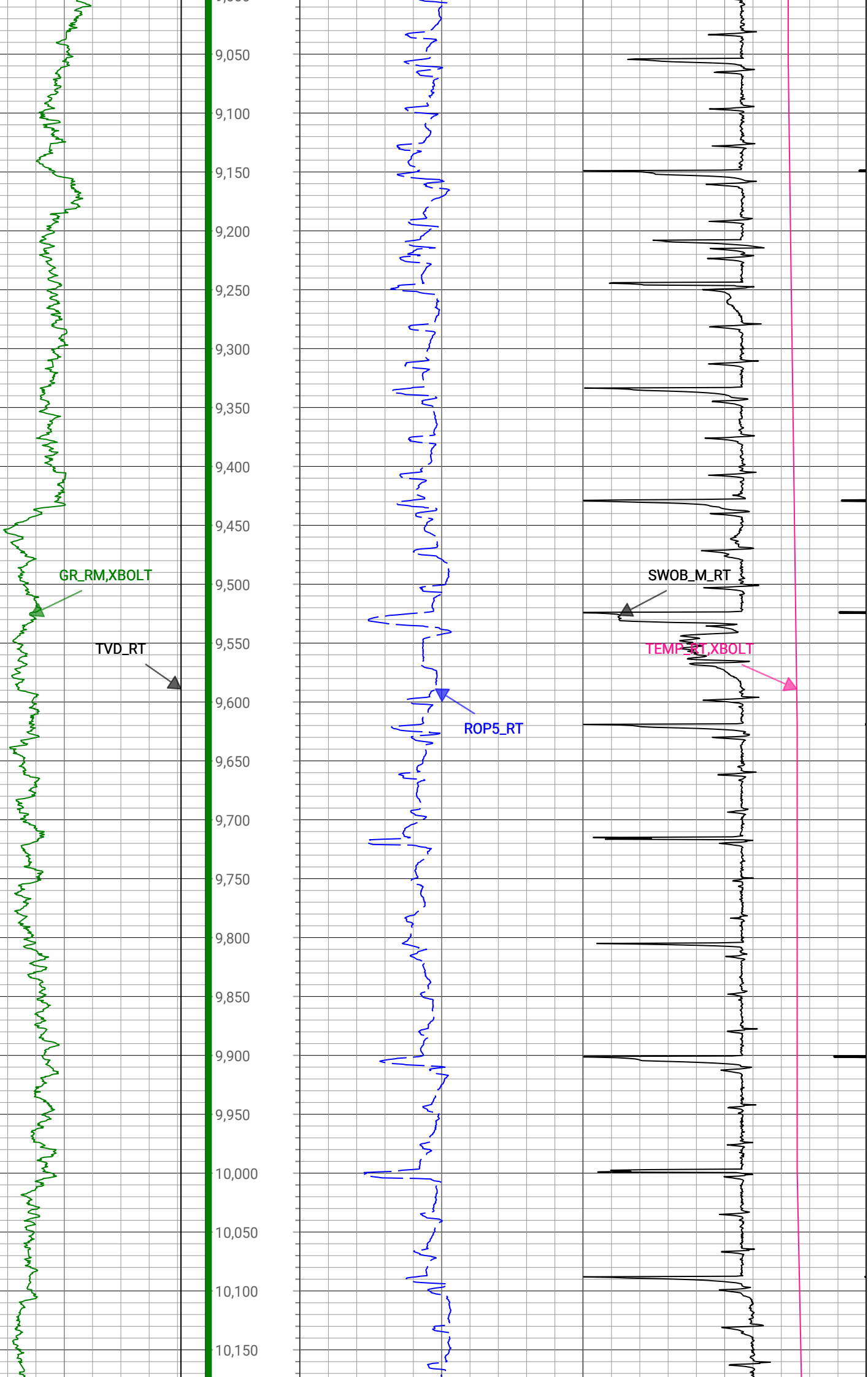


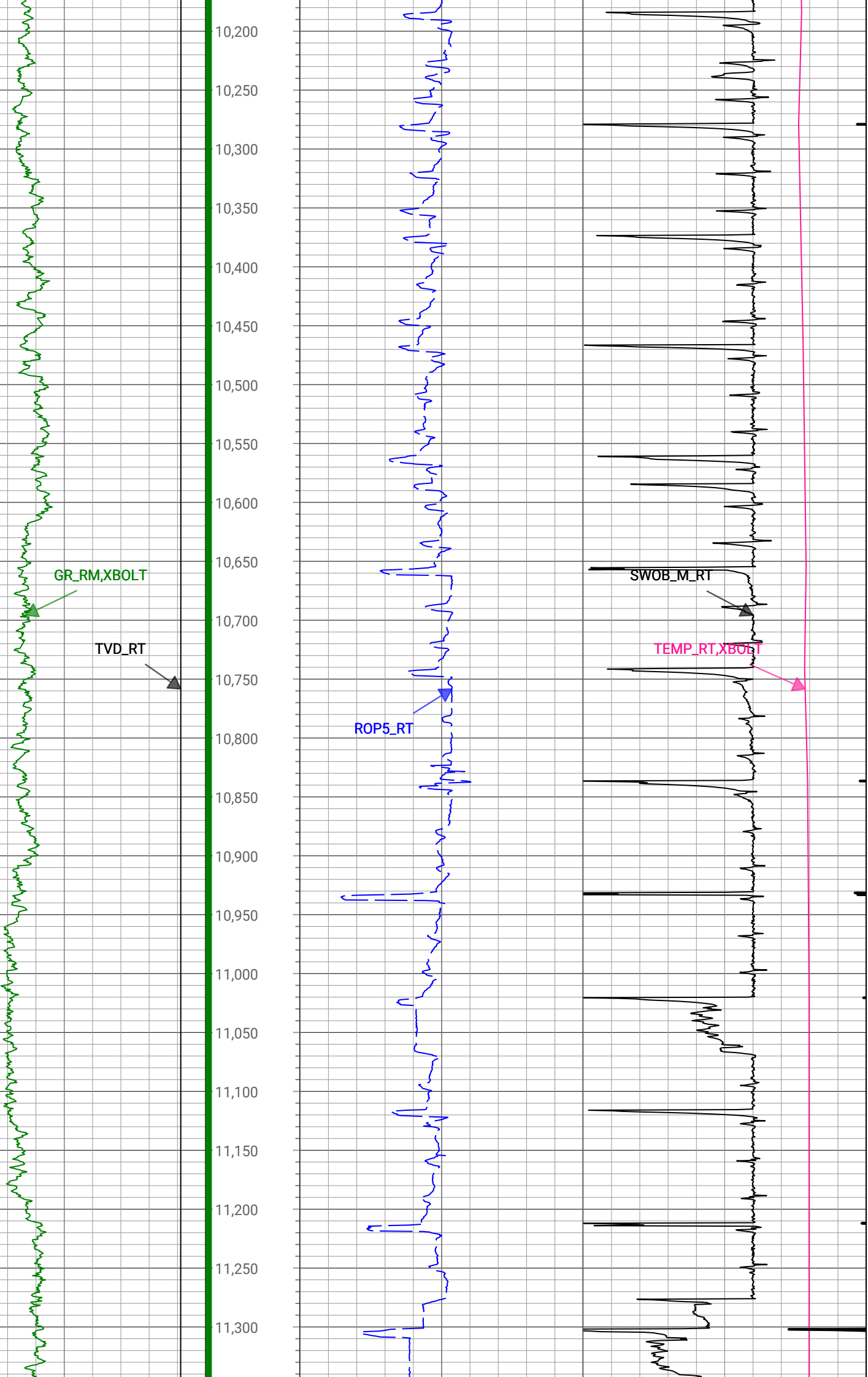


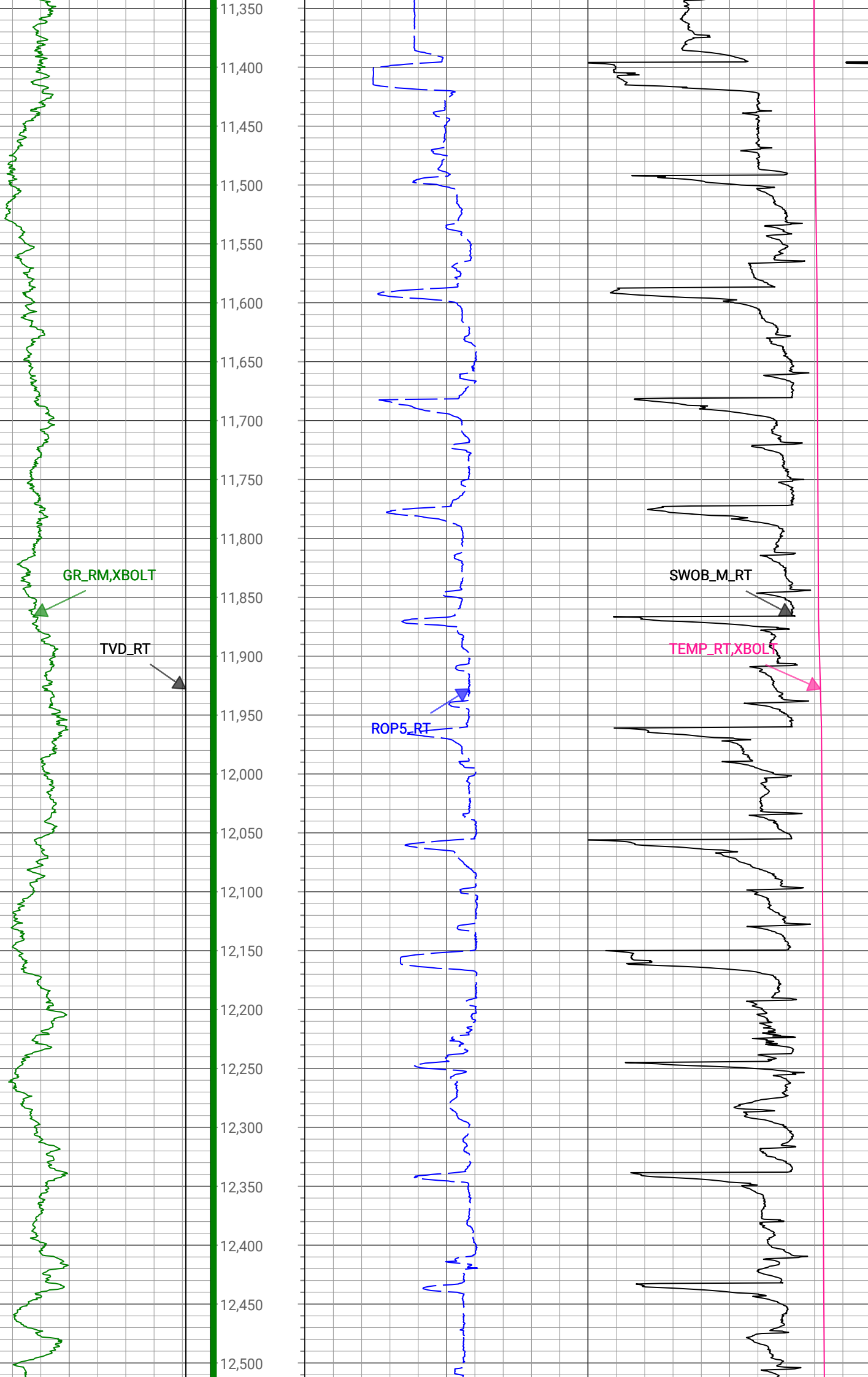


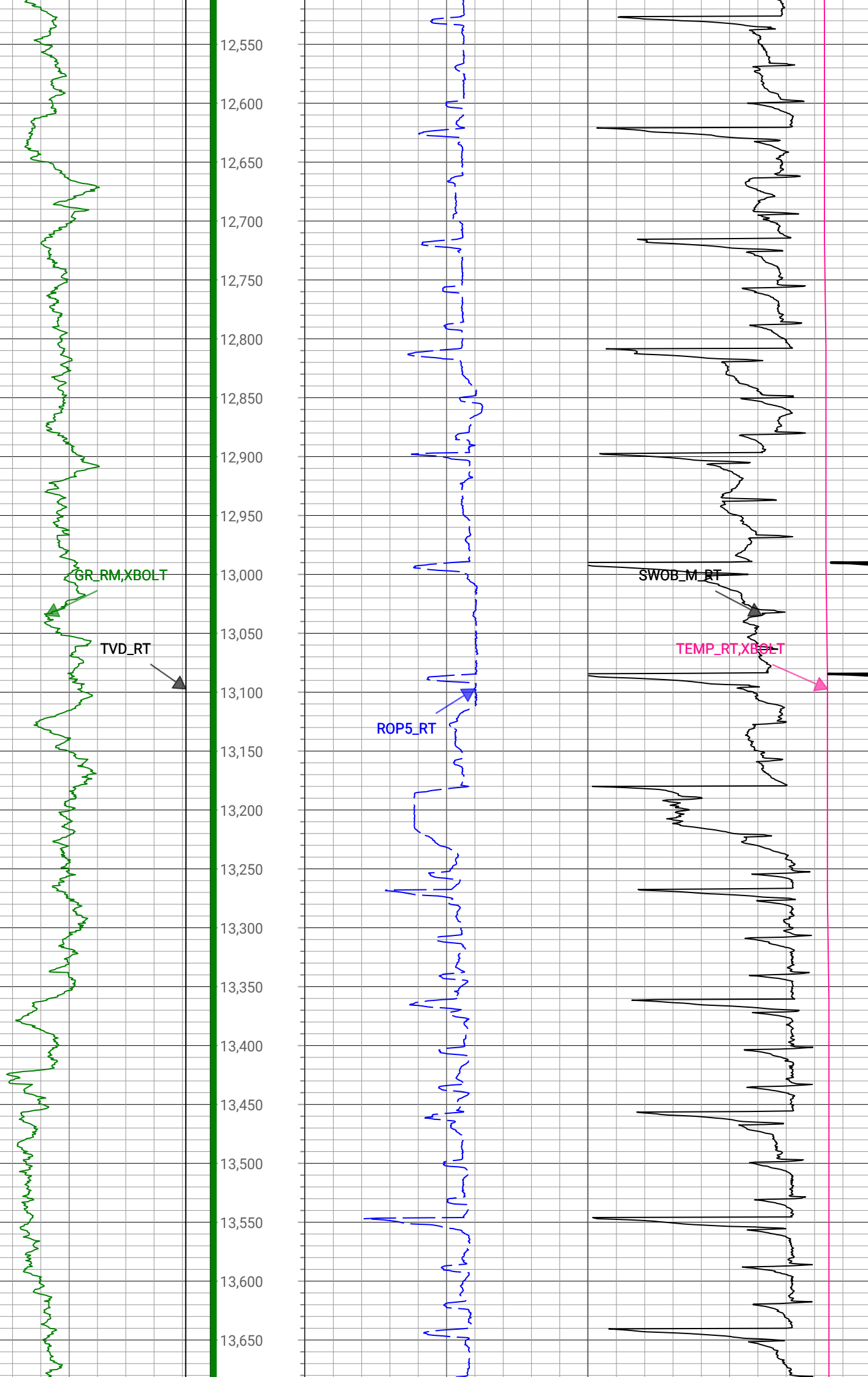


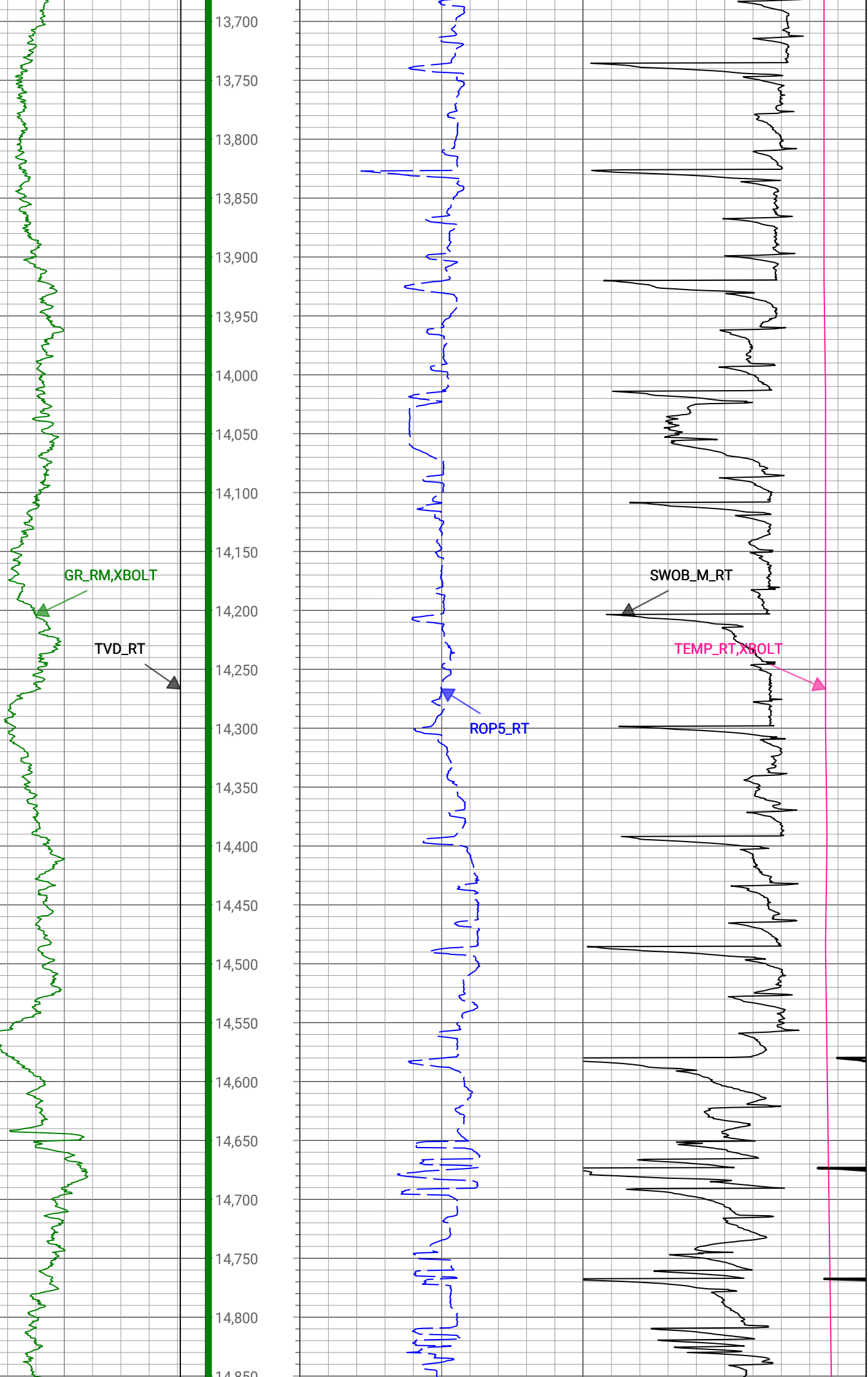


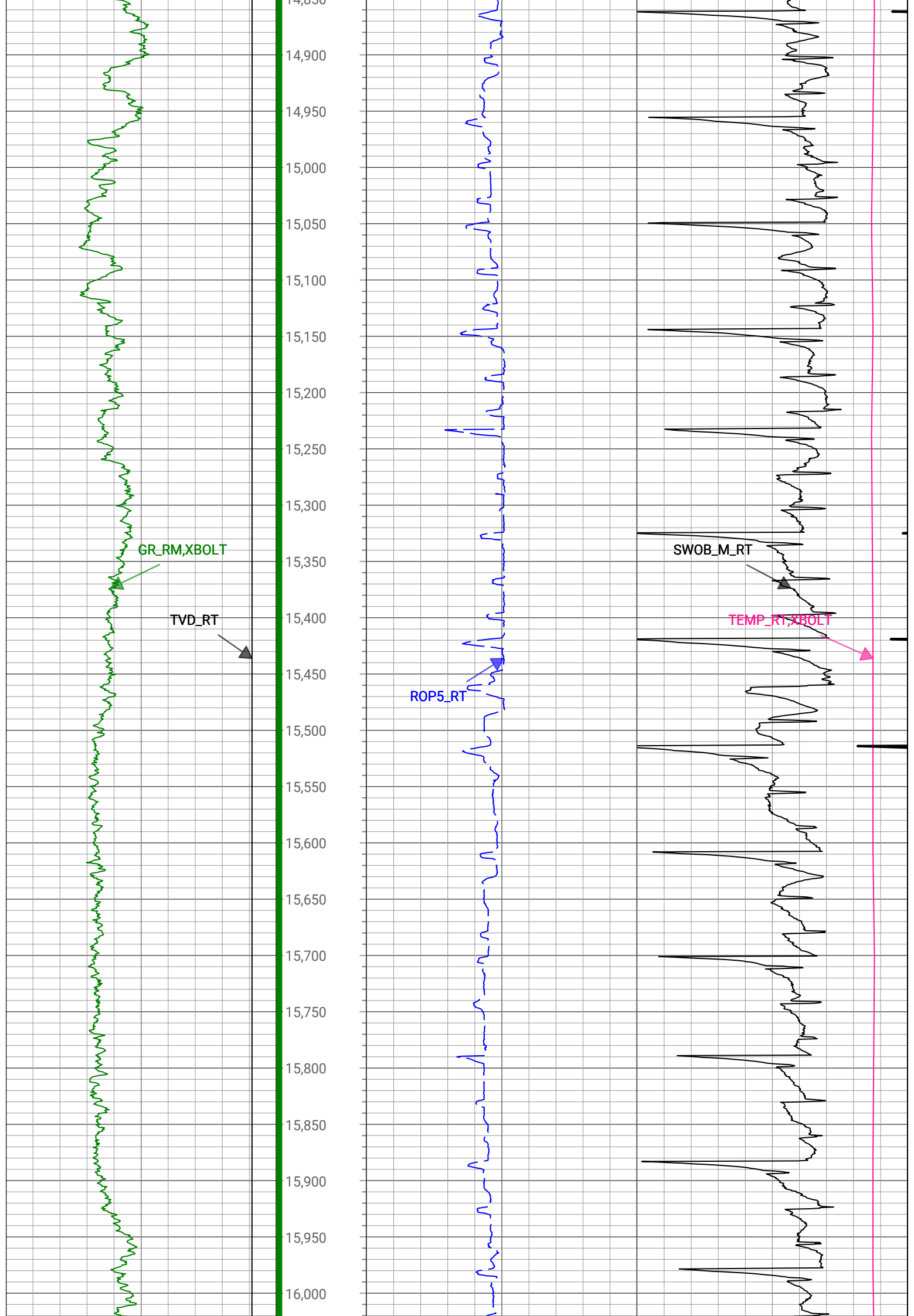












GR_RM,XBOLT

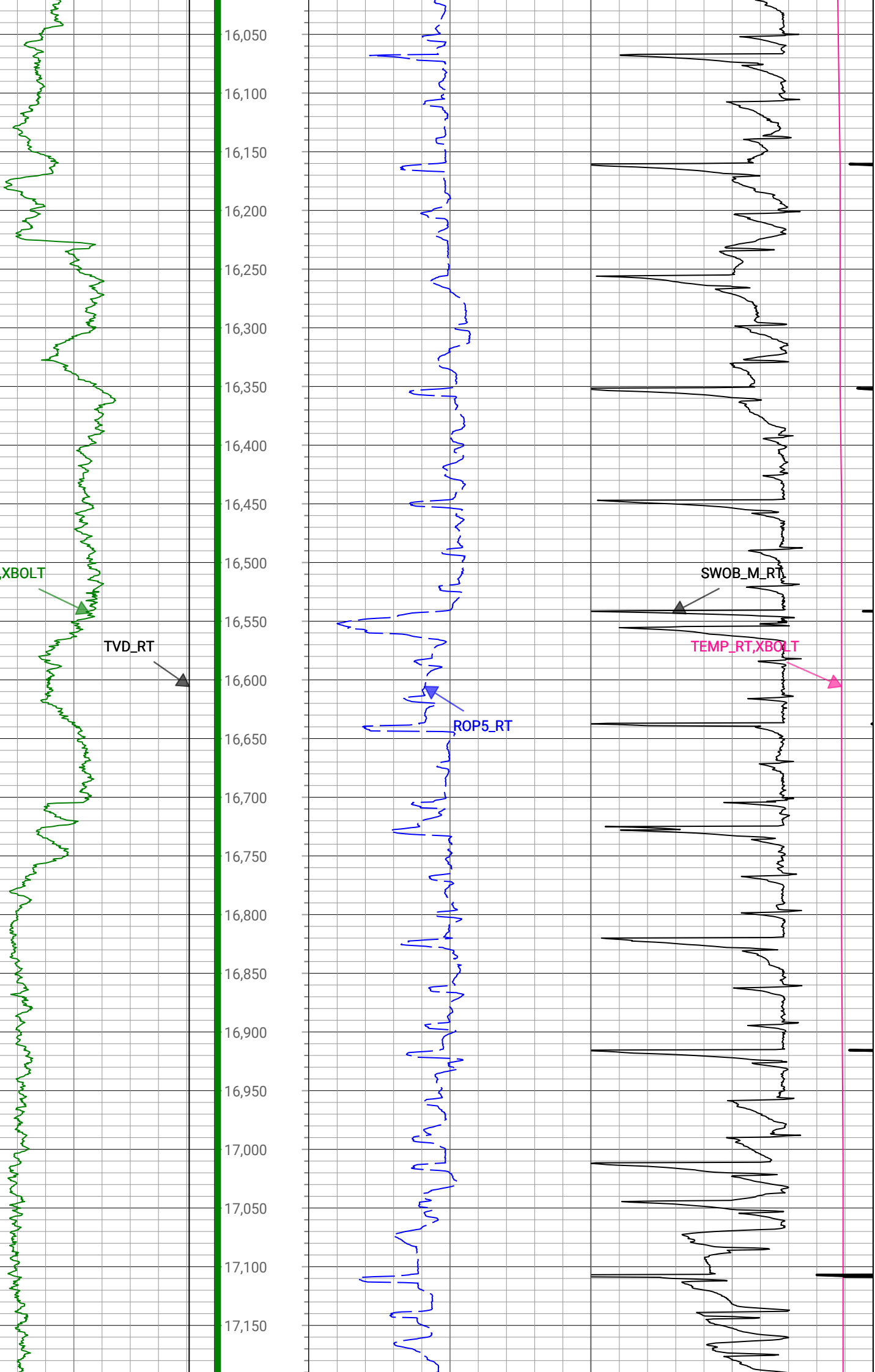
TVD_RT

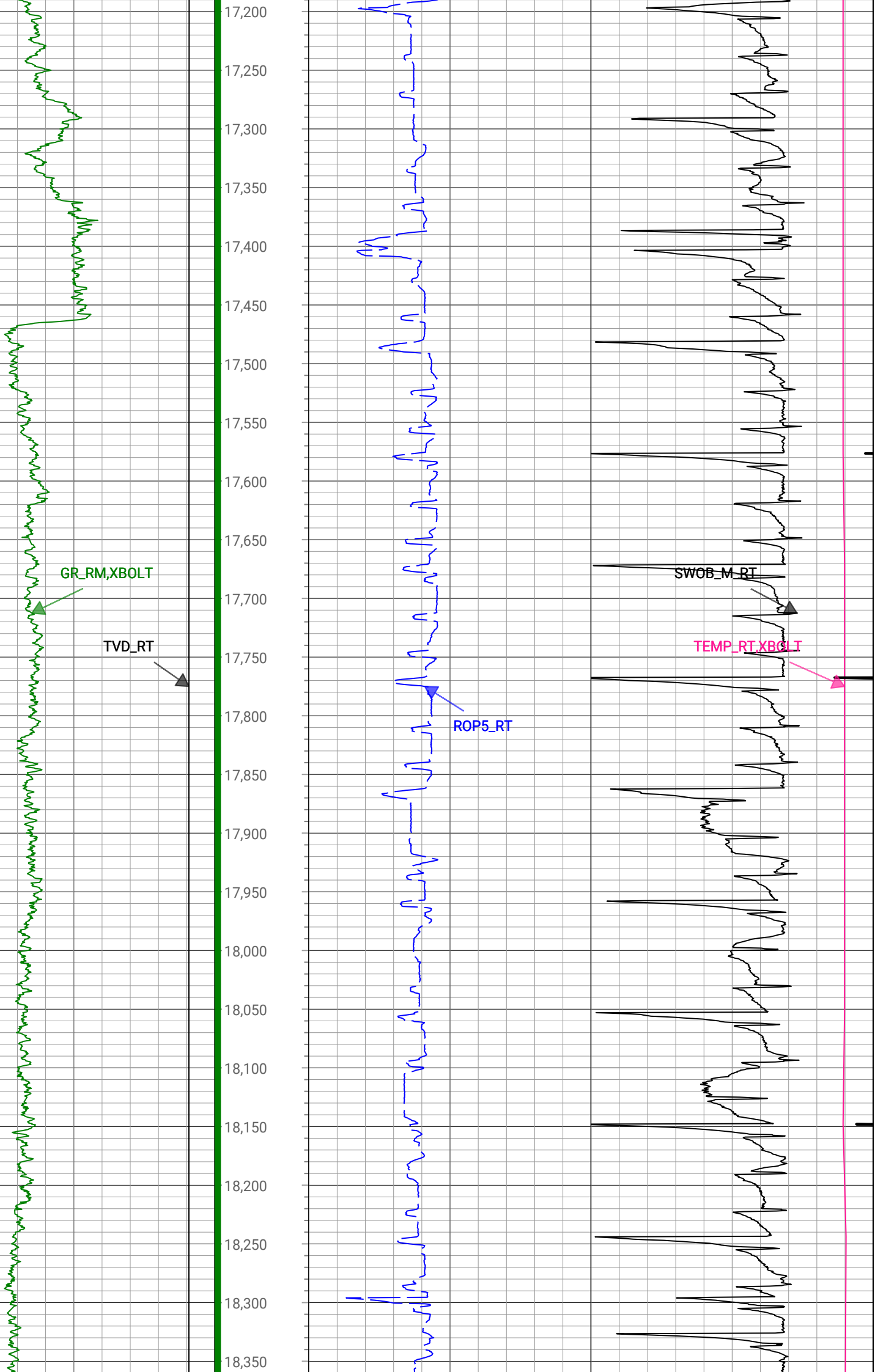
ROP5_RT

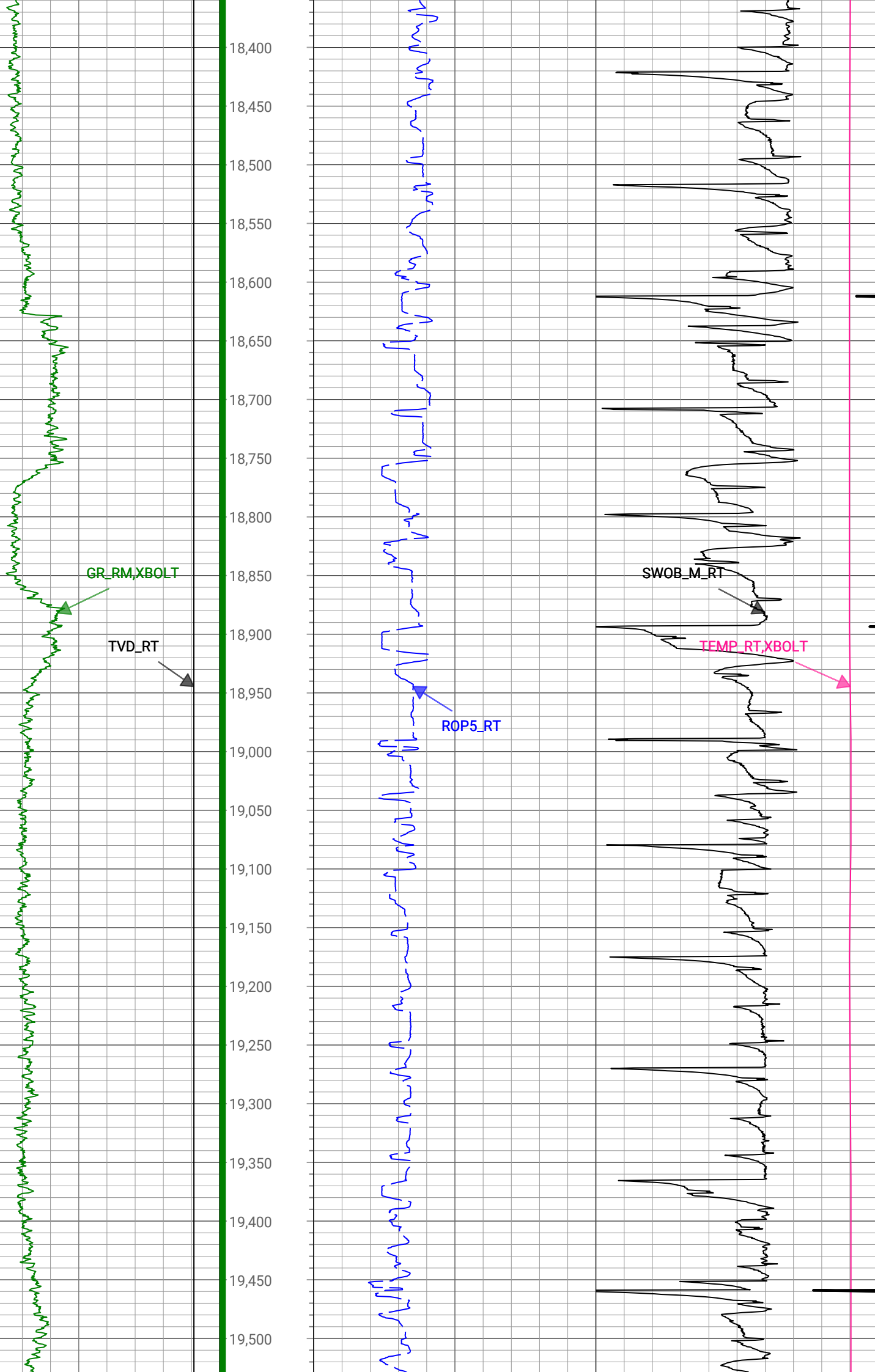
SWOB_M_RT

TEMP_RT,XBOLT

16,050
16,100
16,150
16,200
16,250
16,300
16,350
16,400
16,450
16,500
16,550
16,600
16,650
16,700
16,750
16,800
16,850
16,900
16,950
17,000
17,050
17,100
17,150







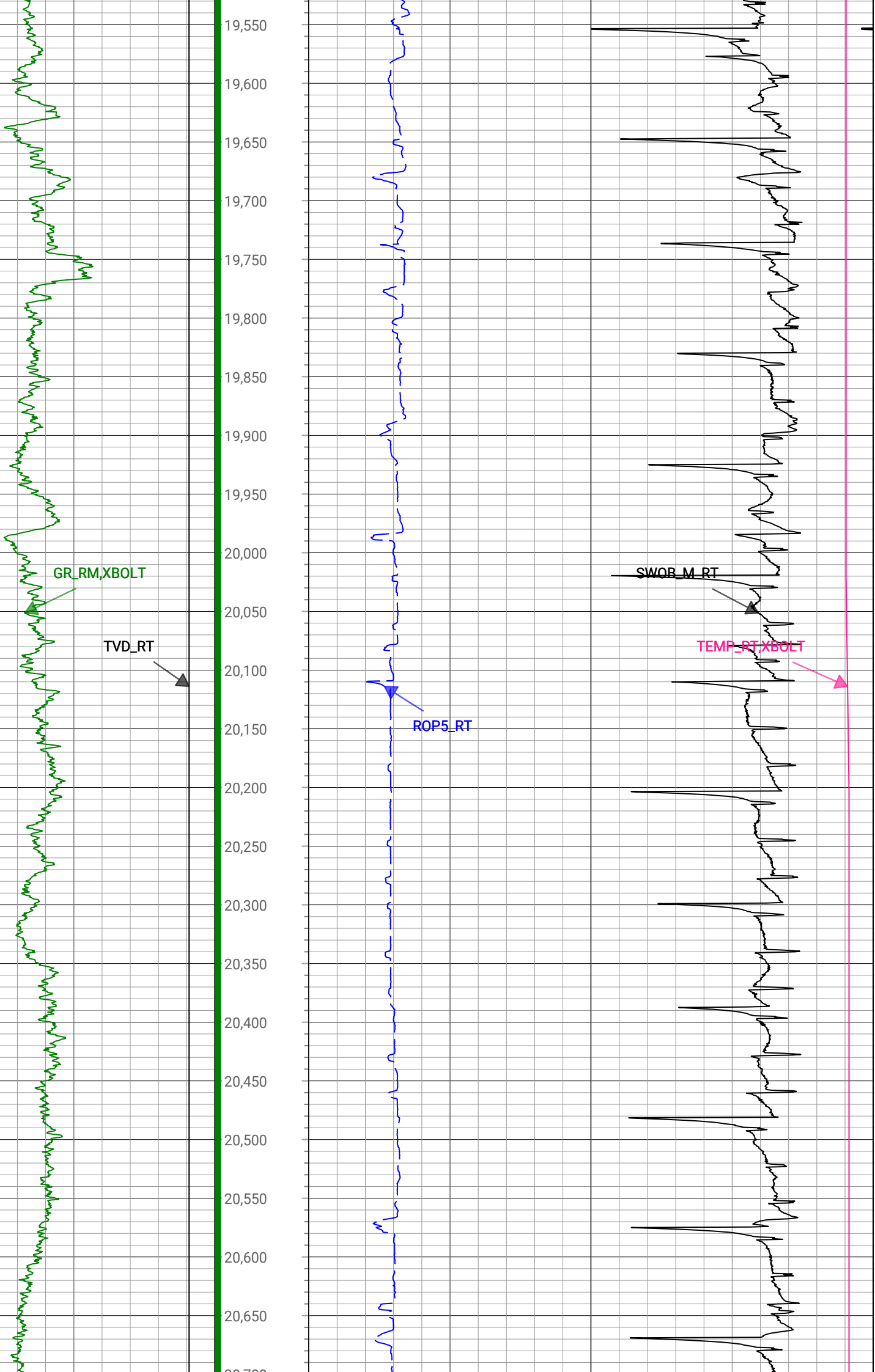
GR_RM, XBOLT

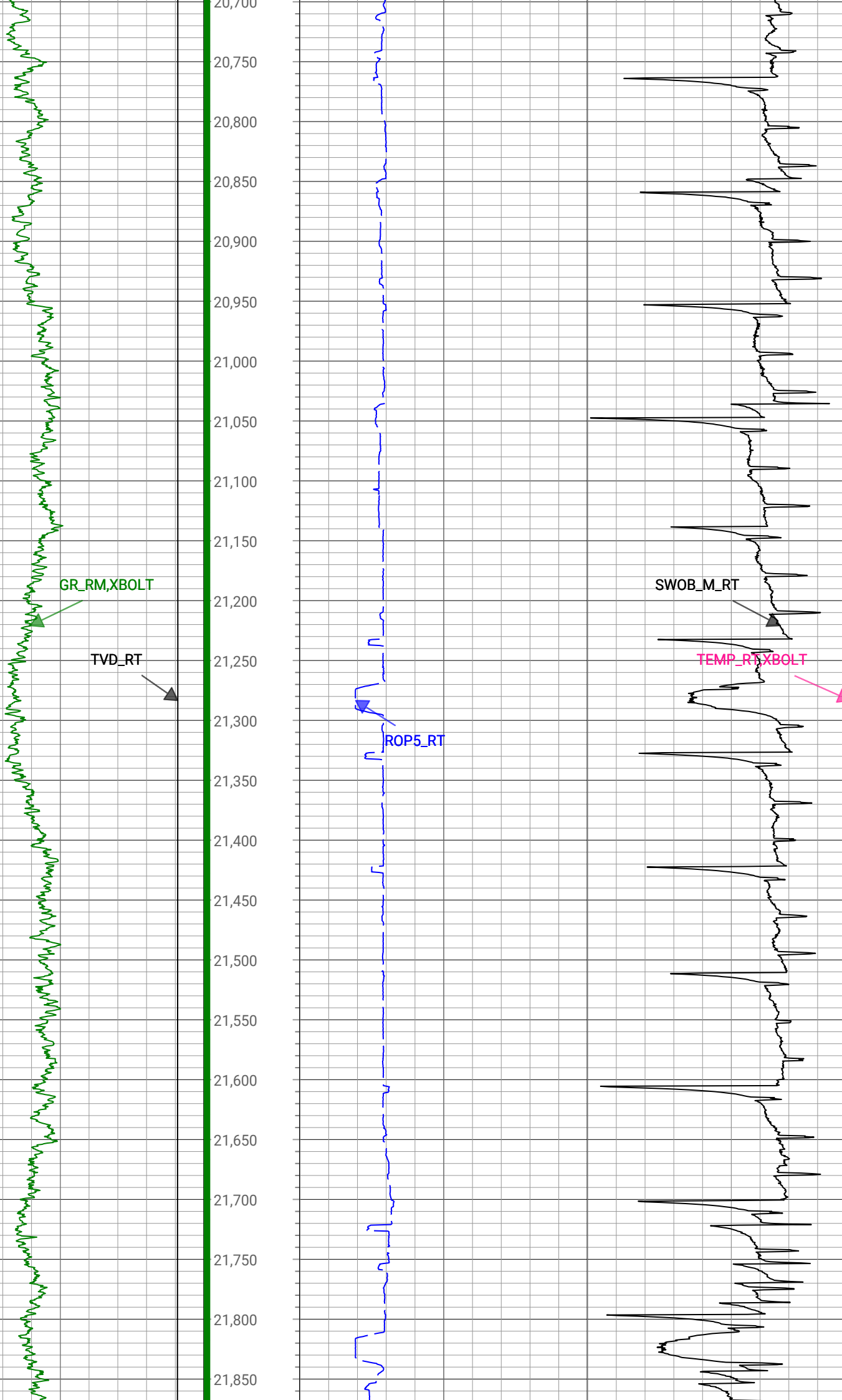
TVD_RT

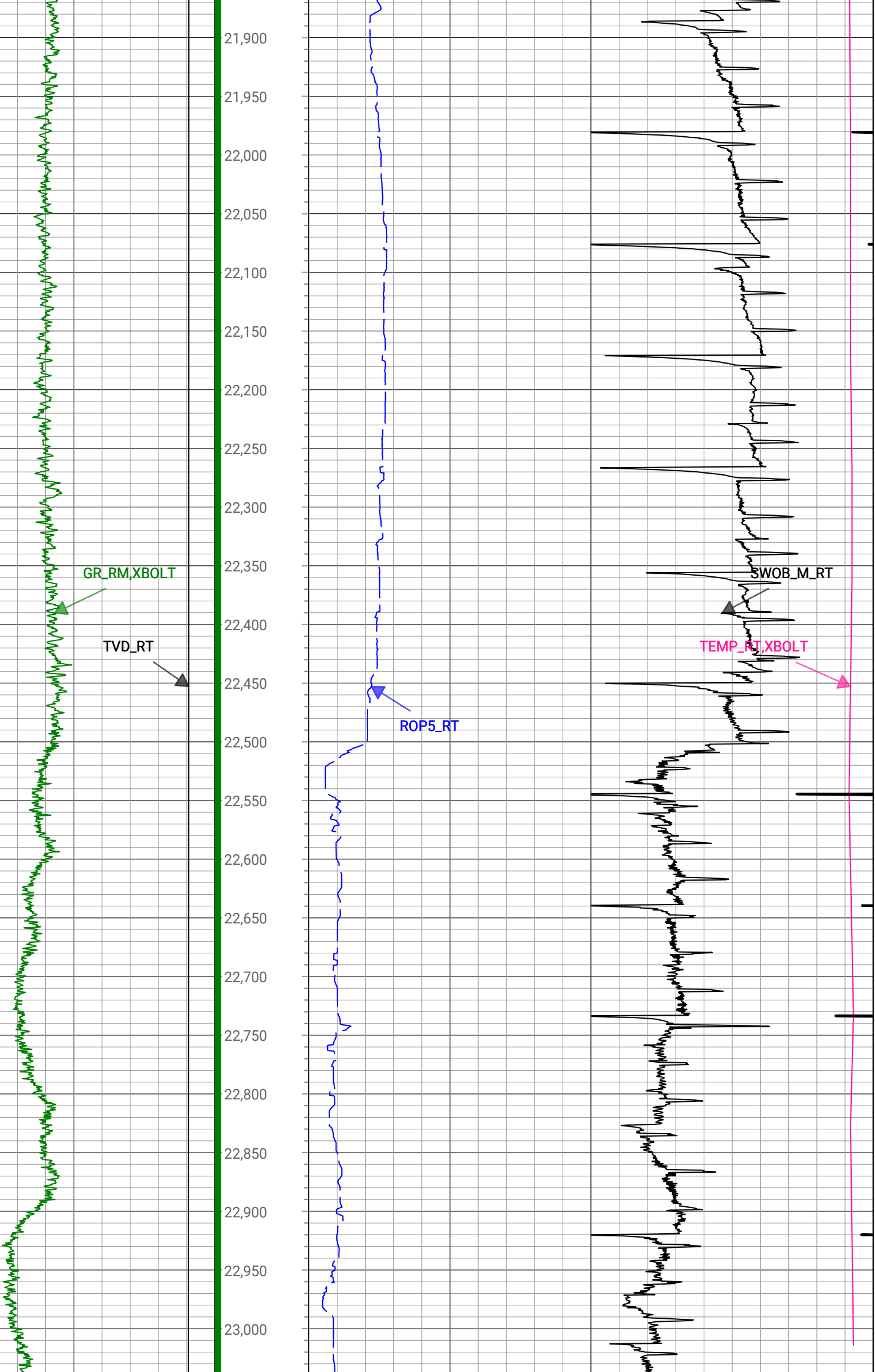
ROP5_RT

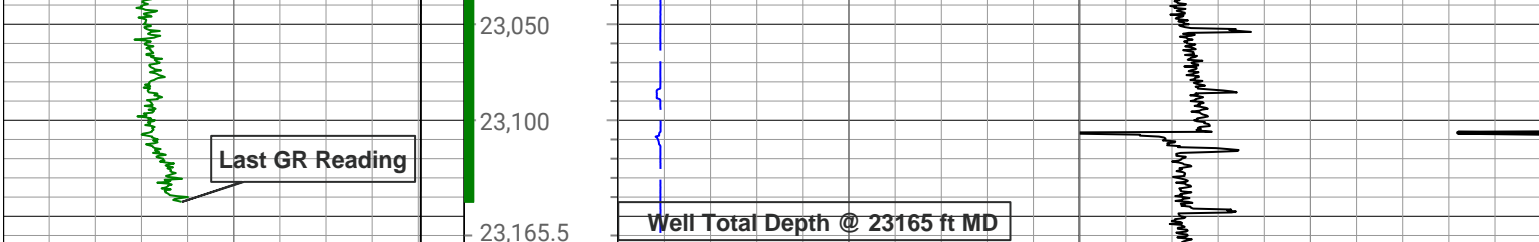
SWOB_M_RT

TEMP_RT, XBOLT









1,500	TVD_RT	8,000	Depth (ft)	0	ROP5_RT	1,000	0	TEMP_RT,XBOLT	300
ft, Borehole				ft/h, Borehole			degF, Borehole		
0	GR_RM,XBOLT	300		gAPI, Borehole			0	SWOB_M_RT	50
							1000 lbm, Borehole		
Description: Xbolt GAMMA RAY			Format: XBOLT_PDC		Index Scale: 1in/100ft		Index Unit: ft		Index Type: Measured Depth
Creation Date: 02-Apr-2023									

Survey Record

Survey Calculation

North Reference:	True North								
Tie In Point									
Measured Depth:	0 (ft)	Inclination:	0 (deg)	Azimuth:	0 (deg)				
True Vertical Depth:	0 (ft)	North Displacement:	0 (ft)	East Displacement:	0 (ft)				

D&I Inits - Run - 1

Geomagnetic Model:	HDGM 2023	Geomagnetic Date:	30-Mar-2023 00:00:00						
Location B:	51531 (nT)	Location G:	998.982 (mgn)						
Magnetic Dip:	66.1 (deg)	Magnetic Dec:	7.697 (deg)						
Total Correction:	7.697								

MD(ft)	Incl(deg)	Azim(deg)	TVD(ft)	V Sec(ft)	N/-S(ft)	E/-W(ft)	DLS (deg/100ft)	Closure Distance (ft)	Closure Azimuth (deg)	Tool Type
0	0	0	0	0.00	0	0	0.00			TIP
25	0	0	25	0	0	0	0	0	0	MWD
100	0.26	231.96	100	-0.12	-0.1	-0.13	0.35	0.17	231.96	MWD
188	0.31	270.99	188	-0.5	-0.22	-0.53	0.22	0.57	247.08	MWD
271	0.26	266.33	271	-0.91	-0.23	-0.94	0.07	0.97	256.16	MWD
363	0.75	271.07	362.99	-1.72	-0.23	-1.75	0.53	1.77	262.39	MWD
453	0.62	82.64	452.99	-1.83	-0.16	-1.86	1.52	1.87	265.06	MWD
543	0.66	61.37	542.99	-0.93	0.15	-0.92	0.27	0.93	279.26	MWD
633	0.48	68.22	632.98	-0.17	0.54	-0.12	0.21	0.55	347.93	MWD
722	0.44	53.02	721.98	0.4	0.88	0.5	0.14	1.02	29.74	MWD
812	0.66	78.07	811.97	1.15	1.2	1.29	0.36	1.76	47.08	MWD
902	0.48	79.47	901.97	2	1.37	2.17	0.2	2.56	57.61	MWD
992	0.26	11.18	991.97	2.38	1.64	2.58	0.5	3.05	57.47	MWD
1082	1.05	294.54	1081.96	1.61	2.19	1.86	1.14	2.87	40.47	MWD
1172	0.83	311.42	1171.95	0.3	2.96	0.63	0.39	3.02	11.94	MWD
1262	0.66	302.89	1261.94	-0.7	3.67	-0.3	0.23	3.68	355.36	MWD
1352	1.32	305.26	1351.93	-2.07	4.55	-1.58	0.73	4.82	340.86	MWD
1442	1.58	326.88	1441.9	-3.77	6.19	-3.1	0.67	6.92	333.36	MWD
1532	1.76	337.08	1531.86	-5.23	8.5	-4.32	0.39	9.54	333.06	MWD
1622	1.8	341.39	1621.82	-6.5	11.11	-5.31	0.16	12.32	334.46	MWD
1712	1.36	342.35	1711.79	-7.53	13.47	-6.08	0.49	14.78	335.69	MWD
1802	0.62	357.21	1801.77	-8.04	14.98	-6.43	0.86	16.3	336.76	MWD
1892	0.53	304.12	1891.77	-8.49	15.7	-6.8	0.58	17.11	336.57	MWD
1982	0.66	27.22	1981.77	-8.94	15.96	-6.68	1.88	17.18	287.9	MWD

1982	0.66	97.93	1981.77	-8.34	15.86	-6.63	1.29	17.19	337.3	MWD
2001	1.1	110.5	2000.76	-8.05	15.78	-6.35	2.52	17.01	338.07	MWD
2154	1.75	156.1	2153.72	-5.45	13.13	-4.03	0.82	13.73	342.93	Manual
2249	4.76	178.88	2248.56	-4.21	7.86	-3.37	3.39	8.55	336.82	Manual
2344	7.33	201.42	2343.04	-5.28	-1.73	-5.5	3.63	5.77	252.59	Manual
2439	9.45	202.69	2437.01	-9.05	-14.56	-10.72	2.24	18.09	216.37	Manual
2533	10.77	203.06	2529.55	-13.76	-29.77	-17.14	1.41	34.35	209.94	Manual
2628	10.6	193.47	2622.91	-17.4	-46.43	-22.65	1.88	51.66	206.01	Manual
2723	10.31	187.13	2716.34	-18.6	-63.36	-25.74	1.25	68.39	202.11	Manual
2818	9.61	181.06	2809.91	-17.99	-79.73	-26.95	1.33	84.16	198.67	Manual
2913	11.26	175.96	2903.34	-15.59	-96.91	-26.44	1.99	100.45	195.26	Manual
3007	13.29	174.77	2995.18	-11.78	-116.83	-24.81	2.18	119.43	191.99	Manual
3102	16.29	177.68	3087.03	-7.58	-141.02	-23.27	3.25	142.93	189.37	Manual
3197	19.61	176.51	3177.39	-2.86	-170.25	-21.76	3.52	171.64	187.28	Manual
3291	19.51	175.95	3265.96	2.66	-201.65	-19.69	0.23	202.61	185.58	Manual
3385	19.6	176.7	3354.54	8.12	-233.05	-17.68	0.28	233.72	184.34	Manual
3479	20.99	177.2	3442.7	13.43	-265.61	-15.95	1.49	266.09	183.44	Manual
3574	21.15	176.71	3531.35	19	-299.71	-14.13	0.25	300.05	182.7	Manual
3669	20.91	177.17	3620.03	24.56	-333.76	-12.31	0.31	333.98	182.11	Manual
3762	21.83	177.89	3706.63	29.74	-367.61	-10.86	1.03	367.77	181.69	Manual
3856	21.81	176.65	3793.9	35.24	-402.51	-9.19	0.49	402.62	181.31	Manual
3950	21.25	175.73	3881.34	41.31	-436.93	-6.9	0.7	436.98	180.91	Manual
4044	21.71	176.96	3968.81	47.28	-471.28	-4.71	0.68	471.3	180.57	Manual
4137	21.75	177.41	4055.2	52.75	-505.67	-3.02	0.18	505.68	180.34	Manual
4231	20.42	177.48	4142.91	57.97	-539.45	-1.51	1.42	539.45	180.16	Manual
4325	21.14	177.07	4230.79	63.22	-572.76	0.07	0.78	572.76	179.99	Manual
4418	21.13	174.78	4317.54	69.28	-606.2	2.46	0.89	606.21	179.77	Manual
4512	21.09	175.76	4405.23	75.77	-639.94	5.25	0.38	639.96	179.53	Manual
4606	20.68	175.41	4493.05	82.02	-673.35	7.83	0.46	673.4	179.33	Manual
4700	20.87	176.28	4580.94	88.08	-706.61	10.24	0.39	706.68	179.17	Manual
4794	20.51	175.51	4668.88	94.1	-739.73	12.62	0.48	739.84	179.02	Manual
4888	20.44	175.47	4756.94	100.28	-772.51	15.2	0.08	772.66	178.87	Manual
4982	20.42	175.3	4845.03	106.51	-805.22	17.84	0.07	805.41	178.73	Manual
5076	20.05	176.5	4933.23	112.4	-837.64	20.17	0.59	837.89	178.62	Manual
5170	19.51	175.46	5021.68	118.11	-869.37	22.39	0.69	869.66	178.52	Manual
5357	19.04	174.72	5198.2	130.14	-930.88	27.67	0.28	931.29	178.3	Manual
5452	20.17	175.1	5287.69	136.45	-962.63	30.5	1.2	963.11	178.19	Manual
5547	19.01	174.01	5377.19	142.94	-994.33	33.51	1.28	994.9	178.07	Manual
5643	19.01	176.94	5467.95	148.83	-1025.5	35.98	0.99	1026.13	177.99	Manual
5735	19.68	178.87	5554.76	153.28	-1055.95	37.08	1.01	1056.6	177.99	Manual
5829	19.72	176.37	5643.26	158.08	-1087.6	38.4	0.9	1088.28	177.98	Manual
5923	19.49	177.18	5731.81	163.32	-1119.09	40.18	0.38	1119.81	177.94	Manual
6017	20.29	177.97	5820.2	168.18	-1151.04	41.52	0.9	1151.79	177.93	Manual
6111	20.09	176.5	5908.43	173.31	-1183.44	43.09	0.58	1184.23	177.91	Manual
6205	19.69	177.84	5996.82	178.4	-1215.38	44.67	0.65	1216.2	177.9	Manual
6298	20.32	177.27	6084.21	183.26	-1247.17	46.03	0.71	1248.02	177.89	Manual
6392	19.94	177.48	6172.47	188.29	-1279.48	47.51	0.41	1280.37	177.87	Manual
6487	20.09	177.22	6261.73	193.37	-1311.97	49.02	0.18	1312.88	177.86	Manual
6581	20.24	177.93	6349.97	198.3	-1344.34	50.39	0.31	1345.28	177.85	Manual
6675	20.27	178.17	6438.15	202.98	-1376.86	51.49	0.09	1377.83	177.86	Manual

6769	20.17	178.16	6526.36	207.6	-1409.34	52.53	0.11	1410.31	177.87	Manual
6863	19.7	176.66	6614.73	212.56	-1441.35	53.98	0.74	1442.36	177.86	Manual
6957	20.53	177.29	6702.99	217.81	-1473.63	55.68	0.91	1474.68	177.84	Manual
7051	18.42	170.99	6791.62	224.33	-1504.77	58.78	3.16	1505.92	177.76	Manual
7145	21	154.94	6880.17	237.05	-1534.72	68.25	6.35	1536.24	177.45	Manual
7239	25.69	138.32	6966.55	261	-1565.25	88.97	8.56	1567.78	176.75	Manual
7333	30.88	124.31	7049.39	297.52	-1594.11	122.5	8.93	1598.81	175.61	Manual
7428	37.64	116.86	7127.89	346.29	-1621.01	168.59	8.36	1629.75	174.06	Manual
7522	46.27	113.07	7197.74	405.81	-1647.34	225.56	9.56	1662.71	172.2	Manual
7617	51.45	108.51	7260.24	475.06	-1672.6	292.43	6.54	1697.98	170.08	Manual
7712	58.1	102.93	7315.03	551.56	-1693.46	367.09	8.48	1732.79	167.77	Manual
7807	66.76	99.91	7358.97	635.35	-1710.03	449.56	9.54	1768.13	165.27	Manual
7901	74.44	98.08	7390.17	723.85	-1723.84	537.06	8.37	1805.57	162.7	Manual
7995	78.84	94.81	7411.89	815.27	-1734.08	627.91	5.78	1844.26	160.09	Manual
8089	84.42	92.37	7425.57	908.12	-1739.89	720.68	6.47	1883.24	157.5	Manual
8182	88.13	91.68	7431.61	1000.64	-1743.17	813.41	4.06	1923.61	154.98	Manual
8276	87.69	91.65	7435.04	1094.27	-1745.89	907.31	0.47	1967.58	152.54	Manual
8370	89.78	91.38	7437.12	1187.91	-1748.38	1001.25	2.24	2014.78	150.2	Manual
8464	89.11	91.92	7438.03	1281.59	-1751.09	1095.2	0.92	2065.37	147.98	Manual
8558	90.34	91.73	7438.48	1375.3	-1754.08	1189.15	1.32	2119.17	145.87	Manual
8651	90.38	90.55	7437.89	1467.91	-1755.93	1282.13	1.27	2174.2	143.86	Manual
8745	90.21	89.01	7437.41	1561.3	-1755.57	1376.13	1.65	2230.64	141.91	Manual
8839	90.65	89.21	7436.7	1654.55	-1754.11	1470.11	0.51	2288.7	140.03	Manual
8932	89.81	89.85	7436.33	1746.89	-1753.35	1563.11	1.14	2348.94	138.28	Manual
9025	90.58	89.47	7436.01	1839.26	-1752.79	1656.1	0.92	2411.42	136.62	Manual
9118	90.31	89.15	7435.29	1931.56	-1751.67	1749.09	0.45	2475.42	135.04	Manual
9211	90.09	89.12	7434.97	2023.83	-1750.27	1842.08	0.24	2541.01	133.54	Manual
9305	90.43	88.92	7434.54	2117.06	-1748.66	1936.07	0.42	2608.87	132.09	Manual
9399	90.45	88.65	7433.82	2210.25	-1746.67	2030.04	0.29	2678.05	130.71	Manual
9493	90.62	88.61	7432.94	2303.39	-1744.42	2124.01	0.19	2748.53	129.4	Manual
9587	89.97	90.57	7432.46	2396.74	-1743.75	2218	2.2	2821.38	128.17	Manual
9682	90.29	89.85	7432.24	2491.2	-1744.1	2313	0.83	2896.87	127.02	Manual
9776	90.05	90.19	7431.96	2584.63	-1744.13	2407	0.44	2972.48	125.93	Manual
9871	90.48	89.84	7431.52	2679.05	-1744.15	2502	0.58	3049.93	124.88	Manual
9966	90.44	89.68	7430.76	2773.42	-1743.76	2597	0.17	3128.11	123.88	Manual
10060	90.19	90.3	7430.24	2866.84	-1743.74	2690.99	0.71	3206.57	122.94	Manual
10155	90.52	90.06	7429.65	2961.3	-1744.04	2785.99	0.43	3286.86	122.05	Manual
10249	90.47	89.85	7428.84	3054.71	-1743.97	2879.99	0.23	3366.86	121.2	Manual
10342	90.85	89.78	7427.77	3147.1	-1743.66	2972.98	0.42	3446.59	120.39	Manual
10434	90.15	90.57	7426.97	3238.57	-1743.95	3064.98	1.15	3526.39	119.64	Manual
10527	89.63	90.03	7427.15	3331.05	-1744.43	3157.97	0.81	3607.75	118.92	Manual
10619	90.07	90.39	7427.39	3422.53	-1744.77	3249.97	0.62	3688.71	118.23	Manual
10712	90.58	90.11	7426.86	3515	-1745.18	3342.97	0.63	3771.09	117.57	Manual
10805	90.21	90.51	7426.22	3607.49	-1745.68	3435.97	0.59	3853.99	116.93	Manual
10898	90.05	90.41	7426.01	3700	-1746.43	3528.96	0.2	3937.46	116.33	Manual
10992	90.13	90.65	7425.86	3793.52	-1747.3	3622.96	0.27	4022.3	115.75	Manual
11084	89.96	90.16	7425.79	3885.03	-1747.95	3714.96	0.56	4105.63	115.2	Manual
11179	90.76	90.21	7425.19	3979.48	-1748.25	3809.95	0.84	4191.91	114.65	Manual
11274	90.59	90.26	7424.07	4073.93	-1748.64	3904.95	0.19	4278.59	114.12	Manual
11368	90.09	90.07	7423.51	4167.39	-1748.91	3998.94	0.57	4364.66	113.62	Manual

11463	89.31	89.95	7424.01	4261.81	-1748.93	4093.94	0.83	4451.87	113.13	Manual
11557	89.88	90.13	7424.68	4355.24	-1748.99	4187.94	0.64	4538.48	112.67	Manual
11745	89.51	90.43	7425.68	4542.19	-1749.91	4375.93	0.25	4712.85	111.8	Manual
11839	89.74	90.25	7426.29	4635.68	-1750.47	4469.93	0.31	4800.46	111.39	Manual
11933	89.58	90.25	7426.85	4729.14	-1750.88	4563.93	0.17	4888.25	110.99	Manual
12027	89.8	90.13	7427.36	4822.6	-1751.19	4657.92	0.27	4976.24	110.6	Manual
12121	89.99	90.21	7427.53	4916.06	-1751.47	4751.92	0.22	5064.43	110.23	Manual
12215	89.61	90.18	7427.86	5009.52	-1751.79	4845.92	0.41	5152.84	109.87	Manual
12308	89.49	90.58	7428.59	5102.02	-1752.41	4938.92	0.45	5240.6	109.54	Manual
12402	89.81	90.33	7429.16	5195.52	-1753.16	5032.91	0.43	5329.52	109.21	Manual
12495	89.85	90.49	7429.44	5288.03	-1753.82	5125.91	0.18	5417.64	108.89	Manual
12589	89.48	89.93	7429.99	5381.49	-1754.17	5219.91	0.71	5506.77	108.58	Manual
12682	89.6	90.8	7430.74	5473.98	-1754.76	5312.9	0.94	5595.18	108.28	Manual
12775	89.66	90.42	7431.34	5566.52	-1755.75	5405.89	0.41	5683.87	107.99	Manual
12868	89.81	90.46	7431.77	5659.02	-1756.46	5498.89	0.17	5772.6	107.71	Manual
12961	89.84	89.7	7432.05	5751.47	-1756.59	5591.89	0.82	5861.3	107.44	Manual
13054	89.63	90.4	7432.48	5843.91	-1756.67	5684.89	0.79	5950.11	107.17	Manual
13147	89.64	90.51	7433.07	5936.42	-1757.41	5777.88	0.12	6039.24	106.92	Manual
13239	91.03	89.92	7432.54	6027.89	-1757.76	5869.88	1.64	6127.41	106.67	Manual
13332	90.98	90.08	7430.9	6120.31	-1757.76	5962.86	0.18	6216.55	106.42	Manual
13425	90.85	89.58	7429.42	6212.7	-1757.48	6055.85	0.56	6305.72	106.18	Manual
13518	90.67	89.59	7428.19	6305.05	-1756.81	6148.84	0.19	6394.89	105.95	Manual
13610	90.63	90.08	7427.14	6396.45	-1756.54	6240.83	0.53	6483.32	105.72	Manual
13703	91.08	90.07	7425.75	6488.89	-1756.66	6333.82	0.48	6572.91	105.5	Manual
13797	90.98	89.98	7424.06	6582.3	-1756.7	6427.81	0.14	6663.54	105.29	Manual
13891	90.36	89.96	7422.96	6675.72	-1756.66	6521.8	0.66	6754.24	105.07	Manual
13985	91.17	89.49	7421.71	6769.09	-1756.2	6615.79	1	6844.92	104.87	Manual
14078	91.27	89.98	7419.73	6861.45	-1755.77	6708.77	0.54	6934.72	104.67	Manual
14172	89.92	90.05	7418.75	6954.87	-1755.8	6802.76	1.44	7025.69	104.47	Manual
14266	90.54	89.46	7418.38	7048.25	-1755.4	6896.76	0.91	7116.65	104.28	Manual
14360	90.2	89.86	7417.77	7141.61	-1754.84	6990.75	0.56	7207.64	104.09	Manual
14454	90.69	90.49	7417.04	7235.07	-1755.13	7084.75	0.85	7298.91	103.91	Manual
14548	90.71	89.49	7415.89	7328.48	-1755.11	7178.74	1.06	7390.18	103.74	Manual
14736	89.98	89.76	7414.76	7515.19	-1753.88	7366.73	0.41	7572.64	103.39	Manual
14830	89.65	89.88	7415.06	7608.59	-1753.58	7460.73	0.37	7664.04	103.23	Manual
14924	89.61	90.09	7415.67	7702.01	-1753.56	7554.73	0.23	7755.57	103.07	Manual
15018	90.56	89.54	7415.53	7795.4	-1753.26	7648.73	1.17	7847.1	102.91	Manual
15110	90.61	89.74	7414.59	7886.77	-1752.68	7740.72	0.22	7936.66	102.76	Manual
15203	89.73	89.81	7414.31	7979.16	-1752.31	7833.72	0.95	8027.31	102.61	Manual
15296	89.91	89.38	7414.61	8071.52	-1751.66	7926.72	0.5	8117.95	102.46	Manual
15390	90.18	89.67	7414.53	8164.86	-1750.88	8020.71	0.42	8209.59	102.31	Manual
15482	90.48	89.37	7414	8256.2	-1750.11	8112.71	0.46	8299.33	102.17	Manual
15575	89.78	89.82	7413.79	8348.56	-1749.45	8205.7	0.89	8390.12	102.04	Manual
15668	89.89	89.81	7414.06	8440.96	-1749.15	8298.7	0.12	8481.04	101.9	Manual
15760	90.31	89.92	7413.9	8532.38	-1748.93	8390.7	0.47	8571.04	101.77	Manual
15853	90.3	89.68	7413.4	8624.77	-1748.61	8483.7	0.26	8662.03	101.65	Manual
15945	90.38	89.81	7412.86	8716.16	-1748.2	8575.7	0.17	8752.07	101.52	Manual
16038	90.44	89.78	7412.19	8808.56	-1747.86	8668.7	0.07	8843.15	101.4	Manual
16131	90.11	89.81	7411.75	8900.95	-1747.53	8761.69	0.36	8934.27	101.28	Manual
16225	90.2	89.86	7411.49	8994.35	-1747.26	8855.69	0.11	9026.42	101.16	Manual

16319	90.07	89.85	7411.27	9087.75	-1747.02	8949.69	0.14	9118.61	101.05	Manual
16414	90.58	89.6	7410.73	9182.11	-1746.57	9044.69	0.6	9211.78	100.93	Manual
16508	90.44	89.9	7409.9	9275.49	-1746.16	9138.68	0.35	9304.01	100.82	Manual
16602	89.91	89.93	7409.61	9368.9	-1746.02	9232.68	0.56	9396.33	100.71	Manual
16696	90.35	89.34	7409.39	9462.26	-1745.42	9326.68	0.78	9488.6	100.6	Manual
16791	90.19	89.1	7408.95	9556.53	-1744.13	9421.67	0.3	9581.75	100.49	Manual
16885	90.78	89.58	7408.15	9649.83	-1743.04	9515.66	0.81	9673.99	100.38	Manual
16979	89.83	89.88	7407.65	9743.2	-1742.6	9609.66	1.06	9766.38	100.28	Manual
17168	90.62	89.57	7406.91	9930.94	-1741.69	9798.65	0.45	9952.24	100.08	Manual
17263	90.54	89.55	7405.95	10025.28	-1740.96	9893.64	0.09	10045.65	99.98	Manual
17357	90.62	89.65	7405	10118.62	-1740.31	9987.64	0.14	10138.12	99.88	Manual
17451	90.47	89.59	7404.1	10211.97	-1739.68	10081.63	0.17	10230.63	99.79	Manual
17544	90.34	89.42	7403.44	10304.31	-1738.88	10174.62	0.23	10322.15	99.7	Manual
17639	90.42	89.52	7402.81	10398.63	-1738	10269.62	0.13	10415.65	99.61	Manual
17733	90.51	89.77	7402.05	10491.99	-1737.42	10363.61	0.28	10508.24	99.52	Manual
17827	90.42	89.56	7401.29	10585.35	-1736.87	10457.61	0.24	10600.86	99.43	Manual
17922	90.13	89.42	7400.83	10679.67	-1736.02	10552.6	0.34	10694.45	99.34	Manual
18016	89.91	89.84	7400.8	10773.03	-1735.42	10646.6	0.5	10787.11	99.26	Manual
18110	90.03	89.88	7400.85	10866.43	-1735.19	10740.6	0.13	10879.86	99.18	Manual
18204	89.97	89.58	7400.85	10959.81	-1734.74	10834.6	0.33	10972.6	99.1	Manual
18298	90.18	90.71	7400.73	11053.26	-1734.98	10928.6	1.22	11065.46	99.02	Manual
18392	90.11	90.39	7400.49	11146.78	-1735.88	11022.59	0.35	11158.44	98.95	Manual
18486	89.97	90.32	7400.42	11240.27	-1736.47	11116.59	0.17	11251.4	98.88	Manual
18580	89.63	90.28	7400.75	11333.75	-1736.96	11210.59	0.36	11344.35	98.81	Manual
18675	89.68	89.92	7401.32	11428.19	-1737.12	11305.59	0.38	11438.27	98.74	Manual
18769	89.87	90.24	7401.69	11521.63	-1737.26	11399.59	0.4	11531.2	98.67	Manual
18863	89.6	90.27	7402.13	11615.1	-1737.67	11493.58	0.29	11624.2	98.6	Manual
18957	89.86	90.19	7402.57	11708.57	-1738.05	11587.58	0.29	11717.2	98.53	Manual
19145	89.93	90.14	7402.91	11895.48	-1738.59	11775.58	0.05	11903.24	98.4	Manual
19239	89.9	90.11	7403.05	11988.93	-1738.8	11869.58	0.05	11996.26	98.33	Manual
19333	89.74	90.19	7403.35	12082.38	-1739.04	11963.58	0.19	12089.31	98.27	Manual
19426	89.9	90.2	7403.64	12174.85	-1739.36	12056.58	0.17	12181.4	98.21	Manual
19520	89.88	89.88	7403.82	12268.28	-1739.43	12150.58	0.34	12274.45	98.15	Manual
19613	89.96	89.97	7403.95	12360.7	-1739.3	12243.58	0.13	12366.5	98.09	Manual
19707	89.86	89.9	7404.1	12454.12	-1739.2	12337.58	0.13	12459.56	98.02	Manual
19801	89.7	90.15	7404.46	12547.55	-1739.24	12431.58	0.32	12552.65	97.96	Manual
19894	89.91	90.14	7404.78	12640	-1739.47	12524.58	0.23	12644.79	97.91	Manual
19987	89.68	89.9	7405.11	12732.44	-1739.51	12617.58	0.36	12736.92	97.85	Manual
20080	89.86	90.02	7405.48	12824.87	-1739.44	12710.58	0.23	12829.04	97.79	Manual
20173	89.81	90.01	7405.75	12917.3	-1739.47	12803.57	0.05	12921.19	97.74	Manual
20265	89.94	90.04	7405.95	13008.74	-1739.51	12895.57	0.15	13012.37	97.68	Manual
20358	90.02	90.09	7405.98	13101.19	-1739.61	12988.57	0.1	13104.55	97.63	Manual
20546	90.11	90.54	7405.77	13288.15	-1740.65	13176.57	0.24	13291.04	97.53	Manual
20639	89.97	90.23	7405.7	13380.65	-1741.27	13269.57	0.37	13383.33	97.48	Manual
20734	89.92	89.97	7405.8	13475.09	-1741.44	13364.57	0.28	13477.55	97.42	Manual
20828	89.89	90.21	7405.95	13568.53	-1741.58	13458.57	0.26	13570.78	97.37	Manual
20921	89.88	90.07	7406.14	13660.99	-1741.81	13551.57	0.15	13663.05	97.32	Manual
21016	89.91	90.13	7406.31	13755.43	-1741.98	13646.57	0.07	13757.3	97.27	Manual
21110	90.03	89.85	7406.36	13848.86	-1741.96	13740.57	0.32	13850.55	97.23	Manual
21203	90.05	90.11	7406.46	13941.28	-1741.92	13833.57	0.24	13943.81	97.18	Manual

21203	89.83	90.11	7400.40	13941.28	-1741.93	13833.37	0.34	13942.81	97.18	Manual
21295	90.73	89.85	7405.99	14032.72	-1741.9	13925.56	1	14034.09	97.13	Manual
21389	90.95	89.87	7404.62	14126.11	-1741.67	14019.55	0.24	14127.32	97.08	Manual
21483	90.83	90.05	7403.16	14219.52	-1741.6	14113.54	0.23	14220.59	97.03	Manual
21577	90.83	90.16	7401.79	14312.95	-1741.77	14207.53	0.12	14313.9	96.99	Manual
21670	90.58	90.13	7400.65	14405.41	-1742.01	14300.53	0.27	14406.24	96.95	Manual
21764	91.01	89.9	7399.35	14498.83	-1742.03	14394.52	0.52	14499.54	96.9	Manual
21858	90.36	89.85	7398.22	14592.22	-1741.83	14488.51	0.69	14592.84	96.86	Manual
21952	90.32	89.67	7397.66	14685.6	-1741.43	14582.51	0.2	14686.12	96.81	Manual
22046	90.29	90.19	7397.16	14779.02	-1741.32	14676.5	0.55	14779.44	96.77	Manual
22140	90.23	89.95	7396.74	14872.45	-1741.43	14770.5	0.26	14872.81	96.72	Manual
22234	90.21	89.96	7396.38	14965.87	-1741.36	14864.5	0.02	14966.15	96.68	Manual
22328	90.31	89.74	7395.95	15059.27	-1741.11	14958.5	0.26	15059.49	96.64	Manual
22422	90.21	90.05	7395.52	15152.68	-1740.94	15052.5	0.35	15152.84	96.6	Manual
22516	90.4	89.8	7395.02	15246.09	-1740.82	15146.5	0.33	15246.21	96.56	Manual
22610	90.95	90.09	7393.91	15339.5	-1740.73	15240.49	0.66	15339.58	96.52	Manual
22704	90.91	89.82	7392.39	15432.91	-1740.65	15334.48	0.29	15432.96	96.48	Manual
22798	90.91	89.89	7390.9	15526.29	-1740.42	15428.47	0.07	15526.32	96.44	Manual
22892	90.93	89.77	7389.39	15619.68	-1740.14	15522.45	0.13	15619.69	96.4	Manual
22984	90.93	89.87	7387.89	15711.07	-1739.85	15614.44	0.11	15711.07	96.36	Manual
23078	90.93	90.04	7386.37	15804.48	-1739.78	15708.43	0.18	15804.48	96.32	Manual
23165	90.93	90.04	7384.96	15890.94	-1739.84	15795.42	0	15890.95	96.29	Manual

Company: PDC Energy Inc

Well: Brant Federal 17N

Field Name: Wattenberg

Country Name: United States

State Name: Colorado

County Name: Adams



Xbolt GAMMA RAY
1in/100ft Measured Depth
Final Print
Recorded Mode