



FIGURES

Figure 1: Topographic Site Location Map

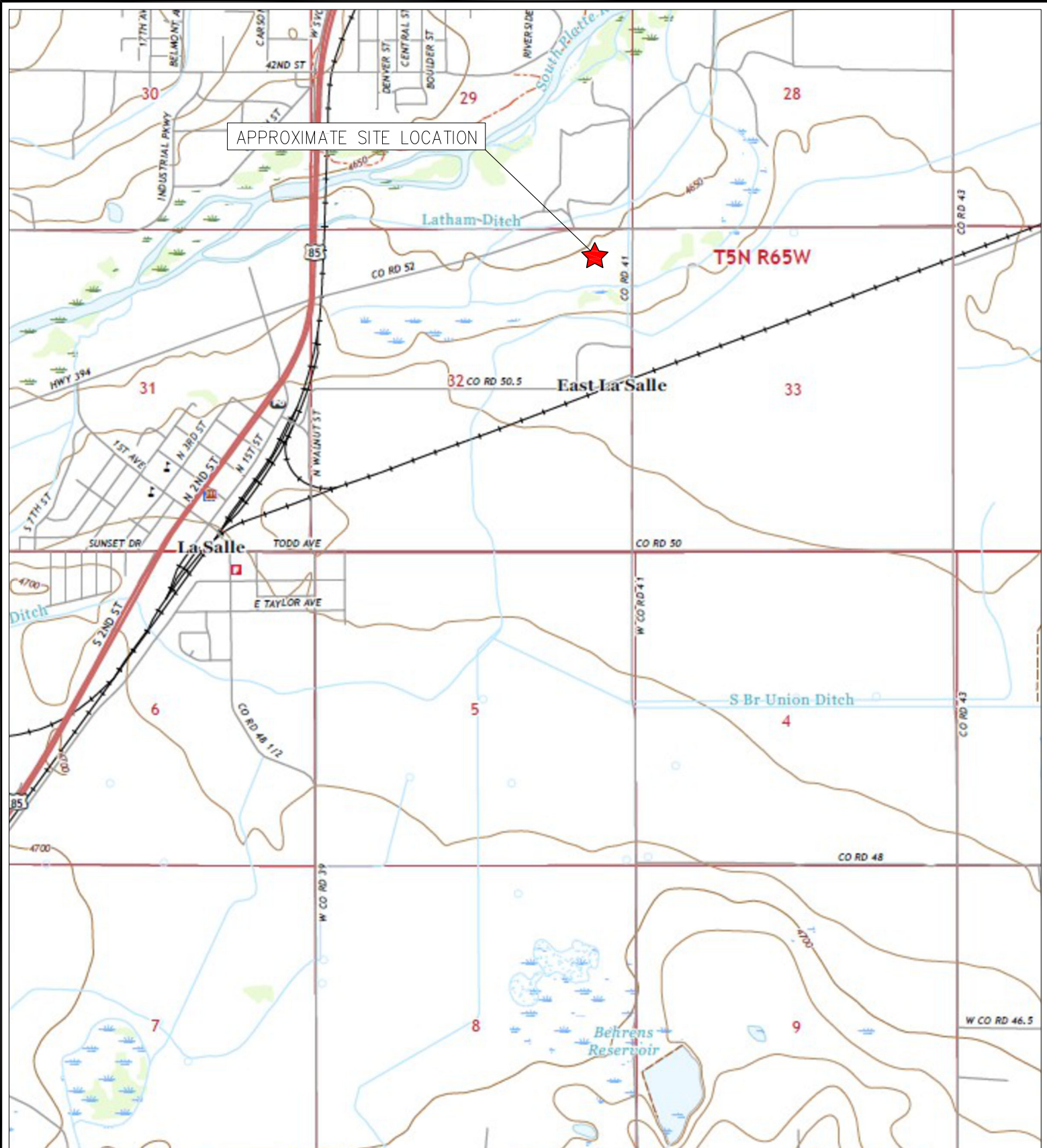
Figure 2: Aerial Site Location Map

Figure 3: Soil Analytical Map

Figure 4: Polycyclic Aromatic Hydrocarbons Map

Figure 5: Metals in Soil Map

Figure 6: Grab Groundwater Analytical Map



TOPOGRAPHIC SITE LOCATION MAP

McBAIN (BAINBRIDGE) #1
CLOSURE ASSESSMENT
40.361784 / -104.680276
NE¼ NE¼ SEC.32 T5N R65W 6PM
WELD COUNTY, COLORADO
API # 05-123-12032
REMEDATION # 27419



EAGLE
ENVIRONMENTAL
CONSULTING, LLC

8000 W 44th Ave, Wheat Ridge, CO 80033
Ph: 303-433-0479 • F: 303-325-5449

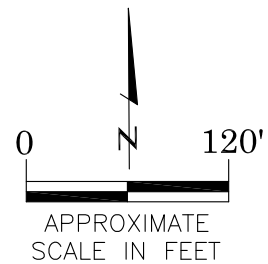
SOURCE: USGS 7.5 MINUTE TOPOGRAPHIC MAP
LA SALLE, CO QUADRANGLE 2022

FIGURE NO. 1



LEGEND

 FORMER McBAIN (BAINBRIDGE) #1 WELLHEAD (PLUGGED AND ABANDONED)



AERIAL SITE LOCATION MAP

McBAIN (BAINBRIDGE) #1
CLOSURE ASSESSMENT
40.361784 / -104.680276
NE $\frac{1}{4}$ NE $\frac{1}{4}$ SEC.32 T5N R65W 6PM
WELD COUNTY, COLORADO
API # 05-123-12032
REMEDATION # 27419

FIGURE NO.
2

DRAWN BY:
EL



EAGLE
ENVIRONMENTAL
CONSULTING, LLC

8000 W 44th Ave, Wheat Ridge, CO 80033
Ph: 303-433-0479 • F: 303-325-5449

LEGEND

— WELLHEAD ASSESSMENT BOUNDARIES

● APPROXIMATE LOCATION OF SOIL SAMPLES
SUBMITTED FOR LABORATORY ANALYSIS

PARAMETERS

SAMPLE LOCATION
DATE
DEPTH (FEET)
B = BENZENE (mg/kg)
T = TOLUENE (mg/kg)
E = ETHYLBENZENE (mg/kg)
X = TOTAL XYLENES (mg/kg)
G = TPH-GRO (mg/kg)
D = TPH-DRO (mg/kg)
R = TPH-RRO (mg/kg)
1,2,4-TMB = 1,2,4 TRIMETHYLBENZENE (mg/kg)
1,3,5-TMB = 1,3,5 TRIMETHYLBENZENE (mg/kg)
Brn= BORON (mg/L)
EC = SPECIFIC CONDUCTANCE (mmhos/cm)
SAR= SODIUM ADSORPTION RATIO
pH = pH (pH UNITS)

mg/kg = MILLIGRAMS PER KILOGRAM
mg/L = MILLIGRAMS PER LITER
mmhos/cm = MILLIMHOS PER CENTIMETER

TPH-GRO = TOTAL PETROLEUM HYDROCARBONS - GASOLINE RANGE ORGANICS
TPH-DRO = TOTAL PETROLEUM HYDROCARBONS - DIESEL RANGE ORGANICS
TPH-RRO = TOTAL PETROLEUM HYDROCARBONS - RESIDUAL RANGE ORGANICS

NOTES:
LABORATORY RERUNS WERE COMPLETED AS APPLICABLE ON SAMPLES WITH SOIL SUITABILITY VALUES OUTSIDE OF COGCC TABLE 915-1 REGULATORY RANGE. RESULTS OF THE RERUNS ARE PRESENTED IN PARENTHESES.

VALUES PRESENTED WITH A LESS THAN SYMBOL (<) DID NOT CONTAIN CONCENTRATIONS AT OR ABOVE LABORATORY DETECTION LIMITS.

VALUES PRESENTED IN **BOLD** EXCEED COGCC TABLE 915-1 REGULATORY LIMITS.

VALUES PRESENTED WITH ASTERISK (*) EXCEED COGCC TABLE 915-1 PROTECTION OF GROUNDWATER SOIL SCREENING LEVELS, ONLY.

COGCC = COLORADO OIL AND GAS CONSERVATION COMMISSION

SOIL ANALYTICAL MAP

McBAIN (BAINBRIDGE) #1
CLOSURE ASSESSMENT
40.361784 / -104.680276
NE¼ NE¼ SEC.32 T5N R65W 6PM
WELD COUNTY, COLORADO
API # 05-123-12032
REMEDIAL # 27419

FIGURE NO.
3

DRAWN BY:
EL



EAGLE
ENVIRONMENTAL
CONSULTING, LLC
8000 W 44th Ave, Wheat Ridge, CO 80033
Ph: 303-433-0479 • F: 303-325-5449

WH-SS-01@4'
04/25/23
4'
B = <0.00200
T = <0.00200
E = 0.00470
X = <0.00200
G = <0.200
D = 214
R = 125
1,2,4-TMB = 0.00546
1,3,5-TMB = <0.00200
Brn= 1.74
EC = 0.543
SAR= **7.50 (7.48/7.55)**
pH = **8.76** (7.94)

WH-SS-02@4'
04/25/23
4'
B = <0.00200
T = <0.00200
E = <0.00200
X = <0.00200
G = <0.200
D = <25.0
R = <100
1,2,4-TMB = <0.00200
1,3,5-TMB = <0.00200
Brn= 0.745
EC = 0.611
SAR= 3.95
pH = **8.72** (7.84)

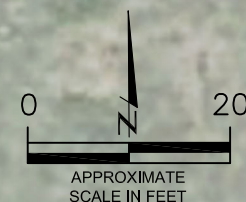
WH-SS-01
WH-SS-02
WH-SS-03
WH-SS-04

BACKGROUND-01

BACKGROUND-01@2'
04/25/23
2'
SAR= 5.95
pH = 8.16

WH-SS-04@4'
04/25/23
4'
B = <0.00200
T = <0.00200
E = <0.00200
X = <0.00200
G = <0.200
D = 33.5
R = <100
1,2,4-TMB = <0.00200
1,3,5-TMB = <0.00200
Brn= <0.985
EC = 2.92
SAR= **6.75 (6.87/6.60)**
pH = 8.18

WH-SS-03@4'
04/25/23
4'
B = <0.00200
T = <0.00200
E = 0.0274
X = 0.0413
G = 0.524
D = <25.0
R = <100
1,2,4-TMB = **0.0247***
1,3,5-TMB = **0.0329***
Brn= 1.12
EC = 2.33
SAR= 4.83
pH = 8.04



LEGEND

— WELLHEAD ASSESSMENT BOUNDARIES

● APPROXIMATE LOCATION OF SOIL SAMPLES
SUBMITTED FOR LABORATORY ANALYSIS

PARAMETERS

SAMPLE LOCATION
DATE SAMPLE COLLECTED
APPROXIMATE DEPTH

POLYCYCLIC AROMATIC HYDROCARBONS (PAHs) (mg/kg)

mg/kg = MILLIGRAMS PER KILOGRAM

NOTES:

VALUES PRESENTED WITH A LESS THAN SYMBOL (<) DID NOT CONTAIN CONCENTRATIONS AT OR ABOVE LABORATORY DETECTION LIMITS.

VALUES PRESENTED IN **BOLD** EXCEED COGCC TABLE 915-1 REGULATORY LIMITS.

VALUES PRESENTED WITH AN ASTERISK (*) EXCEED COGCC TABLE 915-1 GROUNDWATER SOIL SCREENING LEVELS, ONLY.

COGCC = COLORADO OIL AND GAS CONSERVATION COMMISSION

WH-SS-01@4'
04/25/23
4'

1-Methylnaphthalene = 0.00469
2-Methylnaphthalene = 0.00613
Acenaphthene = 0.00908
Anthracene = <0.00067
Benzo(a)anthracene = <0.00067
Benzo(a)pyrene = <0.00067
Benzo(b)fluoranthene = <0.00067
Benzo(k)fluoranthene = <0.00067
Chrysene = 0.000825
Dibenzo(a,h)anthracene = <0.00067
Fluoranthene = <0.00067
Fluorene = 0.00857
Indeno(1,2,3-CD)pyrene = <0.00067
Naphthalene = **0.00433***
Pyrene = 0.0011

WH-SS-02@4'
04/25/23
4'

1-Methylnaphthalene = <0.00201
2-Methylnaphthalene = <0.00201
Acenaphthene = <0.00067
Anthracene = <0.00067
Benzo(a)anthracene = <0.00067
Benzo(a)pyrene = <0.00067
Benzo(b)fluoranthene = <0.00067
Benzo(k)fluoranthene = <0.00067
Chrysene = <0.00067
Dibenzo(a,h)anthracene = <0.00067
Fluoranthene = <0.00067
Fluorene = 0.000382
Indeno(1,2,3-CD)pyrene = <0.00067
Naphthalene = <0.00201
Pyrene = <0.00067

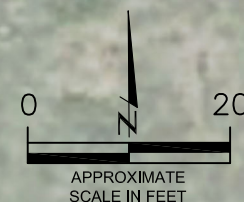
WH-SS-01
WH-SS-02
WH-SS-03
WH-SS-04

WH-SS-04@4'
04/25/23
4'

1-Methylnaphthalene = <0.00201
2-Methylnaphthalene = <0.00201
Acenaphthene = 0.00082
Anthracene = <0.00067
Benzo(a)anthracene = <0.00067
Benzo(a)pyrene = <0.00067
Benzo(b)fluoranthene = <0.00067
Benzo(k)fluoranthene = <0.00067
Chrysene = 0.00119
Dibenzo(a,h)anthracene = <0.00067
Fluoranthene = <0.00067
Fluorene = 0.000587
Indeno(1,2,3-CD)pyrene = <0.00067
Naphthalene = <0.00201
Pyrene = 0.00112

WH-SS-03@4'
04/25/23
4'

1-Methylnaphthalene = **0.027***
2-Methylnaphthalene = **0.042***
Acenaphthene = 0.00386
Anthracene = <0.00067
Benzo(a)anthracene = <0.00067
Benzo(a)pyrene = <0.00067
Benzo(b)fluoranthene = <0.00067
Benzo(k)fluoranthene = <0.00067
Chrysene = 0.00152
Dibenzo(a,h)anthracene = <0.00067
Fluoranthene = <0.00067
Fluorene = 0.00744
Indeno(1,2,3-CD)pyrene = <0.00067
Naphthalene = **0.00998***
Pyrene = 0.000883



POLYCYCLIC AROMATIC HYDROCARBONS MAP

McBAIN (BAINBRIDGE) #1
CLOSURE ASSESSMENT
40.361784 / -104.680276
NE¼ NE¼ SEC.32 T5N R65W 6PM
WELD COUNTY, COLORADO
API # 05-123-12032
REMEDIATION # 27419

FIGURE NO.
4

DRAWN BY:
EL



EAGLE
ENVIRONMENTAL
CONSULTING, LLC
8000 W 44th Ave, Wheat Ridge, CO 80033
Ph: 303-433-0479 • F: 303-325-5449

LEGEND

— WELLHEAD ASSESSMENT BOUNDARIES

● APPROXIMATE LOCATION OF SOIL SAMPLES
SUBMITTED FOR LABORATORY ANALYSIS

PARAMETERS

SAMPLE LOCATION
DATE SAMPLE COLLECTED
APPROXIMATE DEPTH
Arsenic = (mg/kg)
Barium = (mg/kg)
Cadmium = (mg/kg)
Chromium (VI) = (mg/kg)
Copper = (mg/kg)
Lead = (mg/kg)
Nickel = (mg/kg)
Selenium = (mg/kg)
Silver = (mg/kg)
Zinc = (mg/kg)

mg/kg = MILLIGRAMS PER KILOGRAM

NA – NOT ANALYZED

(NS) – NOT SAMPLED

NOTES:

VALUES PRESENTED WITH A LESS THAN SYMBOL (<) DID NOT CONTAIN CONCENTRATIONS AT/OR ABOVE LABORATORY REPORTING LIMITS AND/OR MINIMUM DETECTION LIMITS.

VALUES PRESENTED IN **BOLD** EXCEED COGCC TABLE 915-1 REGULATORY LIMITS.

*VALUES EXCEED COGCC TABLE 915-1 PROTECTION OF GROUNDWATER SOIL SCREENING LEVELS, ONLY.

**ACHIEVABLE PRACTICAL QUANTITATIVE LIMITS FOR HEXAVALENT CHROMIUM (Cr VI) IN SOILS IS IN THE RANGE OF 0.1 TO 1 mg/kg. (1) SAMPLE REQUIRED DILUTION, RAISING LABORATORY REPORTING AND DETECTION LIMITS – SAMPLE NON-DETECT.

***ARSENIC IS NATURALLY OCCURRING IN COLORADO. LOCAL CLEAN-UP LEVEL (3.09 mg/kg) IS 1.25*BACKGROUND (2.47 mg/kg).

COGCC = COLORADO OIL AND GAS CONSERVATION COMMISSION

METALS IN SOIL MAP
McBAIN (BAINBRIDGE) #1
CLOSURE ASSESSMENT
40.361784 / -104.680276
NE¼ NE¼ SEC.32 T5N R65W 6PM
WELD COUNTY, COLORADO
API # 05-123-12032
REMEDIAL # 27419

FIGURE NO.
5

DRAWN BY:
EL



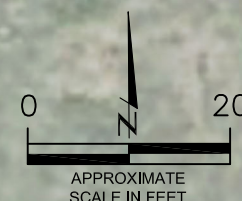
EAGLE
ENVIRONMENTAL
CONSULTING, LLC
8000 W 44th Ave, Wheat Ridge, CO 80033
Ph: 303-433-0479 • F: 303-325-5449

WH-SS-01@4'
04/25/23
4'
Arsenic = **3.54*****
Barium = **151***
Cadmium = 0.217
Chromium (VI) = <1.24**(1)
Copper = 18.2
Lead = **25.4***
Nickel = 9.82
Selenium = **0.269***
Silver = <0.0916
Zinc = <91.6

BACKGROUND-01@2'
04/25/23
2'
Arsenic = 2.47***
Barium = **83.2***
Cadmium = 0.136
Chromium (VI) = NA
Copper = 10.0
Lead = 9.89
Nickel = <8.58
Selenium = 0.121
Silver = <0.0858
Zinc = <85.8

WH-SS-01
WH-SS-04 (NS)
WH-SS-02 (NS)
WH-SS-03

WH-SS-03@4'
04/25/23
4'
Arsenic = **3.50*****
Barium = **103***
Cadmium = 0.192
Chromium (VI) = <0.488**
Copper = 18.6
Lead = **37.0***
Nickel = <8.99
Selenium = **0.314***
Silver = <0.0899
Zinc = <89.9



APPROXIMATE
SCALE IN FEET

LEGEND

- WELLHEAD ASSESSMENT BOUNDARIES
- APPROXIMATE LOCATION OF GRAB GROUNDWATER
SAMPLE SUBMITTED FOR LABORATORY ANALYSIS

PARAMETERS

GROUNDWATER SAMPLE LOCATION	
DATE	
B	= BENZENE (µg/L)
T	= TOLUENE (µg/L)
E	= ETHYLBENZENE (µg/L)
X	= TOTAL XYLENES (µg/L)
N	= NAPHTHALENE (µg/L)
1,2,4-TMB	= 1,2,4-TRIMETHYLBENZENE (µg/L)
1,3,5-TMB	= 1,3,5-TRIMETHYLBENZENE (µg/L)

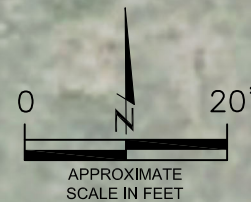
µg/L = MICROGRAMS PER LITER

NOTES:
VALUES PRESENTED IN **BOLD** EXCEED THE COGCC TABLE
915-1 REGULATORY LIMITS.

COGCC = COLORADO OIL AND GAS CONSERVATION
COMMISSION

GW-01
04/25/23
B = **31.4**
T = 166
E = 27.1
X = 429
N = 3.76
1,2,4-TMB = **78.8**
1,3,5-TMB = 49.7

GW-01



GRAB GROUNDWATER ANALYTICAL MAP

McBAIN (BAINBRIDGE) #1
CLOSURE ASSESSMENT
40.361784 / -104.680276
NE¼ NE¼ SEC.32 T5N R65W 6PM
WELD COUNTY, COLORADO
API # 05-123-12032
REMEDIAL # 27419

FIGURE NO.
6

DRAWN BY:
EL



EAGLE
ENVIRONMENTAL
CONSULTING, LLC
8000 W 44th Ave, Wheat Ridge, CO 80033
Ph: 303-433-0479 • F: 303-325-5449



TABLES

Table 1: Photoionization Detector Reading Summary

Table 2: Soil Analytical Results Summary

Table 3: Groundwater Analytical Results Summary

TABLE 1
PHOTOIONIZATION DETECTOR READING SUMMARY
McBAIN (BAINBRIDGE) #1
CLOSURE ASSESSMENT
40.361784 / -104.680276
NE¼ NE¼ SEC.32 T5N R65W 6PM
WELD COUNTY, COLORADO
API # 05-123-12032
REMEDATION # 27419

Sample Location (Latitude/Longitude)	Date	Approximate Depth (feet)	PID Reading (ppm-v)	Lab Submission (Y/N)
WH-SS-01 @ 4' (40.361808 / -104.680268)	04/25/23	4	291.5	Y
WH-SS-02 @ 4' (40.361789 / -104.680246)	04/25/23	4	62.9	Y
WH-SS-03 @ 4' (40.361775 / -104.680268)	04/25/23	4	185.3	Y
WH-SS-04 @ 4' (40.361789 / -104.680290)	04/25/23	4	403.5	Y
Background-01 @ 2' (40.361789 / -104.680158)	04/25/23	2	0.2	Y
(Y/N) = Yes or No ppm-v = parts per million by volume PID = Photoionization Detector				

TABLE 2
SOIL ANALYTICAL RESULTS SUMMARY
McBAIN (BAINBRIDGE) #1
CLOSURE ASSESSMENT
40.361784 / -104.680276
NE¼ NE¼ SEC.32 T5N R65W 6PM
WELD COUNTY, COLORADO
API # 05-123-12032
REMEDIAION # 27419

Sample Location					WH-SS-01 @ 4'	WH-SS-02 @ 4'	WH-SS-03 @ 4'	WH-SS-04 @ 4'	Background-01 @ 2'
(Latitude / Longitude)					(40.361808 / -104.680268)	(40.361789 / -104.680246)	(40.361775 / -104.680268)	(40.361789 / -104.680290)	(40.361789 / -104.680158)
Sample Date					4/25/2023	4/25/2023	4/25/2023	4/25/2023	4/25/2023
Sample Depth					4'	4'	4'	4'	2'
PID Reading (ppm-v)					291.5	62.9	185.3	403.5	0.2
Regulatory Limits									
Chemical of Concern	Units	COGCC Table 915-1 RSSLs	COGCC Table 915-1 GSSLs	Local Clean-Up Level					
VOCs									
Benzene	mg/kg	1.2	0.0026	--	<0.00200	<0.00200	<0.00200	<0.00200	NA
Toluene	mg/kg	490	0.69	--	<0.00200	<0.00200	<0.00200	<0.00200	NA
Ethylbenzene	mg/kg	5.8	0.78	--	0.00470	<0.00200	0.0274	<0.00200	NA
Total Xylenes	mg/kg	58	9.9	--	<0.00200	<0.00200	0.0413	<0.00200	NA
1,2,4-Trimethylbenzene	mg/kg	30	0.0081	--	0.00546	<0.00200	0.0247*	<0.00200	NA
1,3,5-Trimethylbenzene	mg/kg	27	0.0087	--	<0.00200	<0.00200	0.0329*	<0.00200	NA
TOTAL PETROLEUM HYDROCARBONS									
TPH-GRO	mg/kg	500	--	--	<0.200	<0.200	0.524	<0.200	NA
TPH-DRO	mg/kg	500	--	--	214	<25.0	<25.0	33.5	NA
TPH-RRO	mg/kg	500	--	--	125	<100	<100	<100	NA
POLYCYCLIC AROMATIC HYDROCARBONS									
1-Methyl-naphthalene	mg/kg	18	0.006	--	0.00469	<0.00201	0.027*	<0.00201	NA
2-Methyl-naphthalene	mg/kg	24	0.019	--	0.00613	<0.00201	0.042*	<0.00201	NA
Acenaphthene	mg/kg	360	0.55	--	0.00908	<0.00067	0.00386	0.00082	NA
Anthracene	mg/kg	1800	5.8	--	<0.00067	<0.00067	<0.00067	<0.00067	NA
Benzo(a)-anthracene	mg/kg	1.1	0.011	--	<0.00067	<0.00067	<0.00067	<0.00067	NA
Benzo(a)-pyrene	mg/kg	0.11	0.24	--	<0.00067	<0.00067	<0.00067	<0.00067	NA
Benzo(b)-fluoranthene	mg/kg	1.1	0.3	--	<0.00067	<0.00067	<0.00067	<0.00067	NA
Benzo(k)-fluoranthene	mg/kg	11	2.9	--	<0.00067	<0.00067	<0.00067	<0.00067	NA
Chrysene	mg/kg	110	9	--	0.000825	<0.00067	0.00152	0.00119	NA
Dibenzo(a,h)-anthracene	mg/kg	0.11	0.096	--	<0.00067	<0.00067	<0.00067	<0.00067	NA
Fluoranthene	mg/kg	240	8.9	--	<0.00067	<0.00067	<0.00067	<0.00067	NA
Fluorene	mg/kg	240	0.54	--	0.00857	0.000382	0.00744	0.000587	NA
Indeno(1,2,3-cd)-pyrene	mg/kg	1.1	0.98	--	<0.00067	<0.00067	<0.00067	<0.00067	NA
Naphthalene	mg/kg	2	0.0038	--	0.00433*	<0.00201	0.00998*	<0.00201	NA
Pyrene	mg/kg	180	1.3	--	0.0011	<0.00067	0.000883	0.00112	NA
SOIL SUITABILITY (Inorganics)									
Boron	mg/L	2	--	--	1.74	0.745	1.12	<0.985	NA
pH	standard unit	6-8.3	--	--	8.76 (7.94)	8.72 (7.84)	8.04	8.18	8.16
Sodium Adsorption Ratio (SAR)	--	<6	--	--	7.50 (7.48/7.55)	3.95	4.83	6.75 (6.87/6.60)	5.95
Specific Conductance (EC)	mmhos/cm	<4	--	--	0.543	0.611	2.33	2.92	NA
METALS									
Arsenic	mg/kg	0.68***	0.29***	3.09***	3.54***	NA	3.50***	NA	2.47***
Barium	mg/kg	15000	82	--	151*	NA	103*	NA	83.2*
Cadmium	mg/kg	71	0.38	--	0.217	NA	0.192	NA	0.136
Copper	mg/kg	3100	46	--	18.2	NA	18.6	NA	10.0
Lead	mg/kg	400	14	--	25.4*	NA	37.0*	NA	9.89
Nickel	mg/kg	1500	26	--	9.82	NA	<8.99	NA	<8.58
Selenium	mg/kg	390	0.26	--	0.269*	NA	0.314*	NA	0.121
Silver	mg/kg	390	0.8	--	<0.0916	NA	<0.0899	NA	<0.0858
Zinc	mg/kg	23000	370	--	<91.6	NA	<89.9	NA	<85.8
Hexavalent Chromium	mg/kg	0.3**	0.00067**	0.1 to 1.0**	<1.24**(1)	NA	<0.488**	NA	NA
COGCC = Colorado Oil and Gas Conservation Commission NA - Not Analyzed VOCs - Volatile Organic Compounds mg/kg = milligrams per kilogram RSSLs = Residential Soil Screening Levels mmhos/cm = millimhos per centimeter GSSLs = Protection of Groundwater Soil Screening Levels PID = Photoionization Detector TPH-GRO = Total Petroleum Hydrocarbons - Gasoline Range Organics ppm-v = parts per million by volume TPH-DRO = Total Petroleum Hydrocarbons - Diesel Range Organics mg/L = milligrams per liter TPH-RRO = Total Petroleum Hydrocarbons - Residual Range Organics SAR = Sodium Adsorption Ratio									
Notes: Values presented with a less than symbol (<) did not contain concentrations at or above the laboratory reporting limit and/or minimum detection limit Values presented in BOLD exceed COGCC Table 915-1 Regulatory Limits. Values presented with asterisk (*) exceed COGCC Table 915-1 GSSLs, only. Laboratory reruns were completed as applicable on samples with Soil Suitability values outside COGCC Table 915-1 Regulatory Range. Results of the reruns are presented in parentheses. **Achievable practical quantitative limits for Hexavalent Chromium in soils is in the range of 0.1 to 1 mg/kg. (1) The sample required dilution, raising laboratory detection and reporting limits - sample non-detect. ***Arsenic is naturally occurring in Colorado. The Local Clean-up Level (3.09 mg/kg) is 1.25*Background (2.47 mg/kg).									

TABLE 3
GROUNDWATER ANALYTICAL RESULTS SUMMARY
McBAIN (BAINBRIDGE) #1
CLOSURE ASSESSMENT
40.361784 / -104.680276
NE¼ NE¼ SEC.32 T5N R65W 6PM
WELD COUNTY, COLORADO
API # 05-123-12032
REMEDATION # 27419

Sample Location (Latitude/Longitude)	Date	Benzene (µg/L)	Toluene (µg/L)	Ethylbenzene (µg/L)	Total Xylenes (µg/L)	Naphthalene (µg/L)	1,2,4- trimethylbenzene (µg/L)	1,3,5- trimethylbenzene (µg/L)
COGCC Table 915-1 Regulatory Limits (µg/L)		5	560	700	1400	140	67	67
GW-01 (40.361788 / -104.680269)	04/25/23	31.4	166	27.1	429	3.76	78.8	49.7
COGCC = Colorado Oil and Gas Conservation Commission µg/L - micrograms per liter Note: Values presented with a less than symbol (<) indicate concentrations were not observed at or above the laboratory reporting limit. Values presented in BOLD exceed COGCC Table 915-1 Regulatory Limits.								



ATTACHMENT A

Photo Log

McBain (Bainbridge) #1

API # 05-123-12032

Remediation # 27419

Closure Assessment

April 2023



Wellhead Excavation – 04/25/23



Looking south

Petroleum hydrocarbon staining and odor observed throughout excavation

Groundwater observed at approximately 5 feet bgs



ATTACHMENT B

Laboratory Analytical Reports



May 16, 2023

Eagle Environmental Consulting, LLC

Martin C Eckert III

8000 W 44th Ave

Wheat Ridge CO 80033

Project Name - Noble - McBain (BainBridge) #1 Project Number - [none]

Attached are your analytical results for Noble - McBain (BainBridge) #1 received by Origins Laboratory, Inc. April 25, 2023. This project is associated with Origins project number Y304586-01.

The analytical results in the following report were analyzed under the guidelines of EPA Methods. These methods are identified as follows; "SW" are defined in SW-846, "EPA" are defined in 40CFR part 136 and "SM" are defined in the most current revision of Standard Methods For the Examination of Water and Wastewater.

The analytical results apply specifically to the samples and analyses specified per the attached Chain of Custody. As such, this report shall not be reproduced except in full, without the written approval of Origin's laboratory.

Unless otherwise noted, the analytical results for all soil samples are reported on a wet weight basis. All analytical analyses were performed under NELAP guidelines unless noted by a data qualifier.

Any holding time exceedances, deviations from the method specifications or deviations from Origins Laboratory's Standard Operating Procedures are outlined in the case narrative.

Thank you for selecting Origins for your analytical needs. Please contact us with any questions concerning this report, or if we can help with anything at all.

Origins Laboratory, Inc.
303.433.1322
o-squad@oelabinc.com



1725 Elk Place, Denver, CO 80211 | Phone: 303.433.1322 | Fax: 303.265.9645

Eagle Environmental Consulting, LLC
8000 W 44th Ave
Wheat Ridge CO 80033

Martin C Eckert III
Project Number: [none]
Project: Noble - McBain (BainBridge) #1

CROSS REFERENCE REPORT

Sample ID	Laboratory ID	Matrix	Date Sampled	Date Received
WH-SS-01@4'	Y304586-01	Soil	April 25, 2023 7:40	04/25/2023 14:52
WH-SS-02@4'	Y304586-02	Soil	April 25, 2023 7:42	04/25/2023 14:52
WH-SS-03@4'	Y304586-03	Soil	April 25, 2023 7:44	04/25/2023 14:52
WH-SS-04@4'	Y304586-04	Soil	April 25, 2023 7:46	04/25/2023 14:52
WH-SS-01@4' SAR Rerun1	Y304586-05	Soil	April 25, 2023 7:40	04/25/2023 14:52
WH-SS-01@4' SAR Rerun2	Y304586-06	Soil	April 25, 2023 7:40	04/25/2023 14:52
WH-SS-04@4' SAR Rerun1	Y304586-07	Soil	April 25, 2023 7:46	04/25/2023 14:52
WH-SS-04@4' SAR Rerun2	Y304586-08	Soil	April 25, 2023 7:46	04/25/2023 14:52

Chain of Custody Modification Request

On 5/8/2023, Grace Congdon from Eagle Environmental contacted Jordan Bynon via email regarding Y304586 requesting that Table 915 Metals be added to WH-SS-01@4' and WH-SS-03@4'.

Requested modifications to the chain of custody were made by Jordan Bynon on 5/8/2023.

A pH rerun was requested for WH-SS-01@4' and WH-SS-02@4' and a SAR rerun was requested for WH-SS-01@4' and WH-SS-04@4' per Grace's email on 05/08/2023. No errors were found in the original data, all three results are reported.
JAB

Origins Laboratory, Inc.



The results in this report apply to the samples analyzed in accordance with the chain of custody document. This analytical report must be reproduced in its entirety.

Martin C Eckert III
Project Number: [none]
Project: Noble - McBain (BainBridge) #1

[illegible]

Origins Laboratory, Inc.

Byron

The results in this report apply to the samples analyzed in accordance with the chain of custody document. This analytical report must be reproduced in its entirety.

Eagle Environmental Consulting, LLC
8000 W 44th Ave
Wheat Ridge CO 80033

Martin C Eckert III
Project Number: [none]
Project: Noble - McBain (BainBridge) #1

Origins Laboratory

F-012207-01-R1
Effective Date: 01/09/12

Sample Receipt Checklist

Origins Work Order: 4304586

Client: Eagle

Client Project ID: McBain (BainBridge) #1

Checklist Completed by: EHS

Shipped Via: HO

(UPS, FedEx, Hand Delivered, Pick-up, etc.)

Date/time completed: 4/25/23

Airbill #: NA

Matrix(s) Received: (Check all that apply): ☒ Soil/Solid ☐ Water ☐ Other: _____

Cooler Number/Temperature: 116 °C 1 °C 1 °C (Describe)

Thermometer ID: T003

Requirement Description	Yes	No	N/A	Comments (if any)
If samples require cooling, was the temperature between 0°C to ≤ 6°C ⁽¹⁾ ?	/			
Is there ice present (document if blue ice is used)	/			
Are custody seals present on cooler? (if so, document in comments if they are signed and dated, broken or intact)		/		
Are custody seals present on each sample container? (if so, document in comments if they are signed and dated, broken or intact)		/		
Were all samples received intact ⁽¹⁾ ?	/			
Was adequate sample volume provided ⁽¹⁾ ?	/			
Are short holding time analytes or samples with HTs due within 48 hours present ⁽¹⁾ ?		/		
Is a chain-of-custody (COC) present and filled out completely ⁽¹⁾ ?	/			
Does the COC agree with the number and type of sample bottles received ⁽¹⁾ ?	/			
Do the sample IDs on the bottle labels match the COC ⁽¹⁾ ?	/			
Is the COC properly relinquished by the client with date and time recorded ⁽¹⁾ ?	/			
For volatiles in water – is there headspace (> ¼ inch bubble) present? If yes, contact client and note in narrative.			/	
Are samples preserved that require preservation and was it checked ⁽¹⁾ ? (note ID of confirmation instrument used in comments) / (preservation is not confirmed for subcontracted analyses in order to insure sample integrity) / (pH <2 for samples preserved with HNO ₃ , HCL, H ₂ SO ₄) / (pH >10 for samples preserved with NaAsO ₂ +NaOH, ZnAc+NaOH)			/	
Additional Comments (if any):				

⁽¹⁾ If NO, then contact the client before proceeding with analysis and note date/time and person contacted as well as the corrective action to in the additional comments (above) and the case narrative.

Reviewed by (Project Manager)

Date/Time Reviewed 4/26/23

Origins Laboratory, Inc.

Byron

The results in this report apply to the samples analyzed in accordance with the chain of custody document. This analytical report must be reproduced in its entirety.

Eagle Environmental Consulting, LLC
8000 W 44th Ave
Wheat Ridge CO 80033

Martin C Eckert III
Project Number: [none]
Project: Noble - McBain (BainBridge) #1

WH-SS-01@4'
4/25/2023 7:40:00AM

Analyte	Result	Min Detection Limit	Reporting Limit	Units	Dilution	Batch	Prepared	Analyzed	Notes
---------	--------	---------------------	-----------------	-------	----------	-------	----------	----------	-------

Origins Laboratory, Inc.
Y304586-01 (Soil)

Boron (DTPA Sorbitol)

Boron	1.74	0.0988	mg/L	1	B3D2810	04/28/2023	05/01/2023
-------	------	--------	------	---	---------	------------	------------

DRO/ORO by EPA 8015D

Diesel (C10-C28)	214	25.0	mg/kg	1	B3D2636	04/26/2023	04/29/2023
Residual Range Organics (C28-C40)	125	100	"	"	"	"	"

Surrogate: o-Terphenyl	112 %	50-150	"	"	"
------------------------	-------	--------	---	---	---

GBTEX+TMBs by 8260D

1,2,4-Trimethylbenzene	0.00546	0.00200	mg/kg	1	B3D2727	04/27/2023	04/28/2023
1,3,5-Trimethylbenzene	ND	0.00200	"	"	"	"	U
Benzene	ND	0.00200	"	"	"	"	U
Ethylbenzene	0.00470	0.00200	"	"	"	"	"
Toluene	ND	0.00200	"	"	"	"	U
Xylenes, total	ND	0.00200	"	"	"	"	U
Gasoline Range Hydrocarbons	ND	0.200	"	"	"	"	U

Surrogate: 1,2-Dichloroethane-d4	105 %	70-130	"	"	"
Surrogate: Toluene-d8	101 %	70-130	"	"	"

Origins Laboratory, Inc.



The results in this report apply to the samples analyzed in accordance with the chain of custody document. This analytical report must be reproduced in its entirety.

Eagle Environmental Consulting, LLC
8000 W 44th Ave
Wheat Ridge CO 80033

Martin C Eckert III
Project Number: [none]
Project: Noble - McBain (BainBridge) #1

WH-SS-01@4'
4/25/2023 7:40:00AM

Analyte	Result	Min Detection Limit	Reporting Limit	Units	Dilution	Batch	Prepared	Analyzed	Notes
---------	--------	---------------------	-----------------	-------	----------	-------	----------	----------	-------

Origins Laboratory, Inc.
Y304586-01 (Soil)

GBTEX+TMBs by 8260D

Surrogate: 4-Bromofluorobenzene 102 % 70-130 B3D27 27 04/27/2023 04/28/2023

Metals by Saturated Paste by EPA 6010

Calcium	4.29	0.499	meq/L	10	[CALC]	04/27/2023	04/28/2023
Magnesium	4.26	0.823	"	"	"	"	"
Sodium	15.5	0.435	"	"	"	"	"

PAH by 8270D SIM

1-Methylnaphthalene	0.00469	0.00109	0.00201	mg/Kg	1	L679124	04/29/2023	04/30/2023
2-Methylnaphthalene	0.00613	0.00194	0.00201	"	"	"	"	"
Acenaphthene	0.00908	0.000304	0.00067	"	"	"	"	"
Anthracene	ND	0.000334	0.00067	"	"	"	"	"
Benzo(a)anthracene	ND	0.000493	0.00067	"	"	"	"	"
Benzo(a)pyrene	ND	0.000468	0.00067	"	"	"	"	"
Benzo(b)fluoranthene	ND	0.000585	0.00067	"	"	"	"	"
Benzo(k)fluoranthene	ND	0.000437	0.00067	"	"	"	"	"
Chrysene	0.000825	0.000624	0.00067	"	"	"	"	"
Dibenz(a,h)anthracene	ND	0.000614	0.00067	"	"	"	"	"
Fluoranthene	ND	0.000394	0.00067	"	"	"	"	"
Fluorene	0.00857	0.000286	0.00067	"	"	"	"	"
Indeno(1,2,3-cd)pyrene	ND	0.000627	0.00067	"	"	"	"	"

Origins Laboratory, Inc.



The results in this report apply to the samples analyzed in accordance with the chain of custody document. This analytical report must be reproduced in its entirety.

Eagle Environmental Consulting, LLC
8000 W 44th Ave
Wheat Ridge CO 80033

Martin C Eckert III
Project Number: [none]
Project: Noble - McBain (BainBridge) #1

WH-SS-01@4'
4/25/2023 7:40:00AM

Analyte	Result	Min Detection Limit	Reporting Limit	Units	Dilution	Batch	Prepared	Analyzed	Notes
---------	--------	---------------------	-----------------	-------	----------	-------	----------	----------	-------

Waypoint Analytical, LLC.
Y304586-01 (Soil)

PAH by 8270D SIM

Naphthalene	0.00433	0.00145	0.00201	mg/Kg	1	L679124	04/29/2023	04/30/2023
Pyrene	0.0011	0.000643	0.00067	"	"	"	"	"

Surrogate: 2-Fluorobiphenyl	61.7 %		33-115			"	"	"
Surrogate: 4-Terphenyl-d14	68.7 %		33-122			"	"	"
Surrogate: Nitrobenzene-d5	62 %		29-110			"	"	"

pH in Soil by 9045D

pH	8.76			pH Units	1	B3D2721	04/27/2023	04/28/2023
----	------	--	--	----------	---	---------	------------	------------

SAR by 20B Saturated Paste

SAR	7.50			SAR	1	B3D2712	04/27/2023	04/28/2023
-----	------	--	--	-----	---	---------	------------	------------

Specific Conductance Mod. 9050A

Specific Conductance (EC)	0.543		0.00500	mmhos/cm	1	B3D2721	04/27/2023	04/28/2023
---------------------------	-------	--	---------	----------	---	---------	------------	------------

Table 915 metals by EPA 6020B

Arsenic	3.54		0.0916	mg/kg	10	B3E0927	05/09/2023	05/12/2023
Barium	151		9.16	"	"	"	"	"
Cadmium	0.217		0.0916	"	"	"	"	"

Origins Laboratory, Inc.



The results in this report apply to the samples analyzed in accordance with the chain of custody document. This analytical report must be reproduced in its entirety.

Eagle Environmental Consulting, LLC
8000 W 44th Ave
Wheat Ridge CO 80033

Martin C Eckert III
Project Number: [none]
Project: Noble - McBain (BainBridge) #1

WH-SS-01@4'
4/25/2023 7:40:00AM

Analyte	Result	Min Detection Limit	Reporting Limit	Units	Dilution	Batch	Prepared	Analyzed	Notes
---------	--------	------------------------	--------------------	-------	----------	-------	----------	----------	-------

Origins Laboratory, Inc.
Y304586-01 (Soil)

Table 915 metals by EPA 6020B

Copper	18.2		9.16	mg/kg	10	B3E0927	05/09/2023	05/12/2023
Lead	25.4		9.16	"	"	"	"	"
Nickel	9.82		9.16	"	"	"	"	"
Selenium	0.269		0.0916	"	"	"	"	"
Silver	ND		0.0916	"	"	"	"	"
Zinc	ND		91.6	"	"	"	"	"

Total Metals by 7196A

Chromium, Hexavalent	ND	1.24	2.54	mg/Kg	1	L681064	04/25/2023	05/10/2023
----------------------	----	------	------	-------	---	---------	------------	------------

Origins Laboratory, Inc.



The results in this report apply to the samples analyzed in accordance with the chain of custody document. This analytical report must be reproduced in its entirety.

Eagle Environmental Consulting, LLC
8000 W 44th Ave
Wheat Ridge CO 80033

Martin C Eckert III
Project Number: [none]
Project: Noble - McBain (BainBridge) #1

WH-SS-01@4'

4/25/2023 7:40:00AM

Analyte	Result	Min Detection Limit	Reporting Limit	Units	Dilution	Batch	Prepared	Analyzed	Notes
---------	--------	------------------------	--------------------	-------	----------	-------	----------	----------	-------

Origins Laboratory, Inc.
Y304586-01RE (Soil)

pH in Soil by 9045D

pH	7.94			pH Units	1	B3E0909	04/27/2023	05/10/2023	
----	------	--	--	----------	---	---------	------------	------------	--

Origins Laboratory, Inc.



The results in this report apply to the samples analyzed in accordance with the chain of custody document. This analytical report must be reproduced in its entirety.

Eagle Environmental Consulting, LLC
8000 W 44th Ave
Wheat Ridge CO 80033

Martin C Eckert III
Project Number: [none]
Project: Noble - McBain (BainBridge) #1

WH-SS-02@4'
4/25/2023 7:42:00AM

Analyte	Result	Min Detection Limit	Reporting Limit	Units	Dilution	Batch	Prepared	Analyzed	Notes
---------	--------	---------------------	-----------------	-------	----------	-------	----------	----------	-------

Origins Laboratory, Inc.
Y304586-02 (Soil)

Boron (DTPA Sorbitol)

Boron	0.745	0.0996	mg/L	1	B3D2810	04/28/2023	05/01/2023	
-------	-------	--------	------	---	---------	------------	------------	--

DRO/ORO by EPA 8015D

Diesel (C10-C28)	ND	25.0	mg/kg	1	B3D2636	04/26/2023	04/29/2023	U
Residual Range Organics (C28-C40)	ND	100	"	"	"	"	"	U

Surrogate: o-Terphenyl	92.7 %	50-150	"	"	"	"	"
------------------------	--------	--------	---	---	---	---	---

GBTEX+TMBs by 8260D

1,2,4-Trimethylbenzene	ND	0.00200	mg/kg	1	B3D2727	04/27/2023	04/28/2023	U
1,3,5-Trimethylbenzene	ND	0.00200	"	"	"	"	"	U
Benzene	ND	0.00200	"	"	"	"	"	U
Ethylbenzene	ND	0.00200	"	"	"	"	"	U
Toluene	ND	0.00200	"	"	"	"	"	U
Xylenes, total	ND	0.00200	"	"	"	"	"	U
Gasoline Range Hydrocarbons	ND	0.200	"	"	"	"	"	U

Surrogate: 1,2-Dichloroethane-d4	104 %	70-130	"	"	"	"	"
----------------------------------	-------	--------	---	---	---	---	---

Origins Laboratory, Inc.



The results in this report apply to the samples analyzed in accordance with the chain of custody document. This analytical report must be reproduced in its entirety.

Eagle Environmental Consulting, LLC
8000 W 44th Ave
Wheat Ridge CO 80033

Martin C Eckert III
Project Number: [none]
Project: Noble - McBain (BainBridge) #1

WH-SS-02@4'
4/25/2023 7:42:00AM

Analyte	Result	Min Detection Limit	Reporting Limit	Units	Dilution	Batch	Prepared	Analyzed	Notes
---------	--------	---------------------	-----------------	-------	----------	-------	----------	----------	-------

Origins Laboratory, Inc.
Y304586-02 (Soil)

GBTEX+TMBs by 8260D

Surrogate: Toluene-d8	98.4 %	70-130	B3D27 27	04/27/2023	04/28/2023
Surrogate: 4-Bromofluorobenzene	95.5 %	70-130	"	"	"

Metals by Saturated Paste by EPA 6010

Calcium	13.1	0.499	meq/L	10	[CALC]	04/27/2023	04/28/2023
Magnesium	8.20	0.823	"	"	"	"	"
Sodium	12.9	0.435	"	"	"	"	"

PAH by 8270D SIM

1-Methylnaphthalene	ND	0.00109	0.00201	mg/Kg	1	L679124	04/29/2023	04/30/2023
2-Methylnaphthalene	ND	0.00194	0.00201	"	"	"	"	"
Acenaphthene	ND	0.000304	0.00067	"	"	"	"	"
Anthracene	ND	0.000334	0.00067	"	"	"	"	"
Benzo(a)anthracene	ND	0.000493	0.00067	"	"	"	"	"
Benzo(a)pyrene	ND	0.000468	0.00067	"	"	"	"	"
Benzo(b)fluoranthene	ND	0.000585	0.00067	"	"	"	"	"
Benzo(k)fluoranthene	ND	0.000437	0.00067	"	"	"	"	"
Chrysene	ND	0.000624	0.00067	"	"	"	"	"
Dibenz(a,h)anthracene	ND	0.000614	0.00067	"	"	"	"	"
Fluoranthene	ND	0.000394	0.00067	"	"	"	"	"

Origins Laboratory, Inc.



The results in this report apply to the samples analyzed in accordance with the chain of custody document. This analytical report must be reproduced in its entirety.

Eagle Environmental Consulting, LLC
8000 W 44th Ave
Wheat Ridge CO 80033

Martin C Eckert III
Project Number: [none]
Project: Noble - McBain (BainBridge) #1

WH-SS-02@4'
4/25/2023 7:42:00AM

Analyte	Result	Min Detection Limit	Reporting Limit	Units	Dilution	Batch	Prepared	Analyzed	Notes
---------	--------	---------------------	-----------------	-------	----------	-------	----------	----------	-------

Waypoint Analytical, LLC.
Y304586-02 (Soil)

PAH by 8270D SIM

Fluorene	0.000382	0.000286	0.00067	mg/Kg	1	L679124	04/29/2023	04/30/2023	J
Indeno(1,2,3-cd)pyrene	ND	0.000627	0.00067	"	"	"	"	"	
Naphthalene	ND	0.00145	0.00201	"	"	"	"	"	
Pyrene	ND	0.000643	0.00067	"	"	"	"	"	

Surrogate: 2-Fluorobiphenyl	56.4 %		33-115			"	"	"	
Surrogate: 4-Terphenyl-d14	62.8 %		33-122			"	"	"	
Surrogate: Nitrobenzene-d5	53.7 %		29-110			"	"	"	

pH in Soil by 9045D

pH	8.72			pH Units	1	B3D2721	04/27/2023	04/28/2023	
----	------	--	--	----------	---	---------	------------	------------	--

SAR by 20B Saturated Paste

SAR	3.95			SAR	1	B3D2712	04/27/2023	04/28/2023	
-----	------	--	--	-----	---	---------	------------	------------	--

Specific Conductance Mod. 9050A

Specific Conductance (EC)	0.611		0.00500	mmhos/cm	1	B3D2721	04/27/2023	04/28/2023	
---------------------------	-------	--	---------	----------	---	---------	------------	------------	--

Origins Laboratory, Inc.



The results in this report apply to the samples analyzed in accordance with the chain of custody document. This analytical report must be reproduced in its entirety.

Eagle Environmental Consulting, LLC
8000 W 44th Ave
Wheat Ridge CO 80033

Martin C Eckert III
Project Number: [none]
Project: Noble - McBain (BainBridge) #1

WH-SS-02@4'

4/25/2023 7:42:00AM

Analyte	Result	Min Detection Limit	Reporting Limit	Units	Dilution	Batch	Prepared	Analyzed	Notes
---------	--------	------------------------	--------------------	-------	----------	-------	----------	----------	-------

Origins Laboratory, Inc.
Y304586-02RE (Soil)

pH in Soil by 9045D

pH	7.84			pH Units	1	B3E0909	04/27/2023	05/10/2023	
----	------	--	--	----------	---	---------	------------	------------	--

Origins Laboratory, Inc.



The results in this report apply to the samples analyzed in accordance with the chain of custody document. This analytical report must be reproduced in its entirety.

Eagle Environmental Consulting, LLC
8000 W 44th Ave
Wheat Ridge CO 80033

Martin C Eckert III
Project Number: [none]
Project: Noble - McBain (BainBridge) #1

WH-SS-03@4'
4/25/2023 7:44:00AM

Analyte	Result	Min Detection Limit	Reporting Limit	Units	Dilution	Batch	Prepared	Analyzed	Notes
---------	--------	---------------------	-----------------	-------	----------	-------	----------	----------	-------

Origins Laboratory, Inc.
Y304586-03 (Soil)

Boron (DTPA Sorbitol)

Boron	1.12	0.101	mg/L	1	B3D2810	04/28/2023	05/01/2023	
-------	------	-------	------	---	---------	------------	------------	--

DRO/ORO by EPA 8015D

Diesel (C10-C28)	ND	25.0	mg/kg	1	B3D2636	04/26/2023	04/29/2023	U
Residual Range Organics (C28-C40)	ND	100	"	"	"	"	"	U

Surrogate: o-Terphenyl	104 %	50-150			"	"	"
------------------------	-------	--------	--	--	---	---	---

GBTEX+TMBs by 8260D

1,2,4-Trimethylbenzene	0.0247	0.00200	mg/kg	1	B3D2727	04/27/2023	04/28/2023	
1,3,5-Trimethylbenzene	0.0329	0.00200	"	"	"	"	"	
Benzene	ND	0.00200	"	"	"	"	"	U
Ethylbenzene	0.0274	0.00200	"	"	"	"	"	
Toluene	ND	0.00200	"	"	"	"	"	U
Xylenes, total	0.0413	0.00200	"	"	"	"	"	
Gasoline Range Hydrocarbons	0.524	0.200	"	"	"	"	"	

Surrogate: 1,2-Dichloroethane-d4	103 %	70-130			"	"	"
Surrogate: Toluene-d8	99.3 %	70-130			"	"	"

Origins Laboratory, Inc.



The results in this report apply to the samples analyzed in accordance with the chain of custody document. This analytical report must be reproduced in its entirety.

Eagle Environmental Consulting, LLC
8000 W 44th Ave
Wheat Ridge CO 80033

Martin C Eckert III
Project Number: [none]
Project: Noble - McBain (BainBridge) #1

WH-SS-03@4'
4/25/2023 7:44:00AM

Analyte	Result	Min Detection Limit	Reporting Limit	Units	Dilution	Batch	Prepared	Analyzed	Notes
---------	--------	---------------------	-----------------	-------	----------	-------	----------	----------	-------

Origins Laboratory, Inc.
Y304586-03 (Soil)

GBTEX+TMBs by 8260D

Surrogate: 4-Bromofluorobenzene	98.0 %	70-130	B3D27 27	04/27/2023	04/28/2023
---------------------------------	--------	--------	-------------	------------	------------

Metals by Saturated Paste by EPA 6010

Calcium	20.0	0.499	meq/L	10	[CALC]	04/27/2023	04/28/2023
Magnesium	7.44	0.823	"	"	"	"	"
Sodium	17.9	0.435	"	"	"	"	"

PAH by 8270D SIM

1-Methylnaphthalene	0.027	0.00109	0.00201	mg/Kg	1	L679124	04/29/2023	04/30/2023
2-Methylnaphthalene	0.042	0.00194	0.00201	"	"	"	"	"
Acenaphthene	0.00386	0.000304	0.00067	"	"	"	"	"
Anthracene	ND	0.000334	0.00067	"	"	"	"	"
Benzo(a)anthracene	ND	0.000493	0.00067	"	"	"	"	"
Benzo(a)pyrene	ND	0.000468	0.00067	"	"	"	"	"
Benzo(b)fluoranthene	ND	0.000585	0.00067	"	"	"	"	"
Benzo(k)fluoranthene	ND	0.000437	0.00067	"	"	"	"	"
Chrysene	0.00152	0.000624	0.00067	"	"	"	"	"
Dibenz(a,h)anthracene	ND	0.000614	0.00067	"	"	"	"	"
Fluoranthene	ND	0.000394	0.00067	"	"	"	"	"
Fluorene	0.00744	0.000286	0.00067	"	"	"	"	"
Indeno(1,2,3-cd)pyrene	ND	0.000627	0.00067	"	"	"	"	"

Origins Laboratory, Inc.



The results in this report apply to the samples analyzed in accordance with the chain of custody document. This analytical report must be reproduced in its entirety.

Eagle Environmental Consulting, LLC
8000 W 44th Ave
Wheat Ridge CO 80033

Martin C Eckert III
Project Number: [none]
Project: Noble - McBain (BainBridge) #1

WH-SS-03@4'
4/25/2023 7:44:00AM

Analyte	Result	Min Detection Limit	Reporting Limit	Units	Dilution	Batch	Prepared	Analyzed	Notes
---------	--------	---------------------	-----------------	-------	----------	-------	----------	----------	-------

Waypoint Analytical, LLC.
Y304586-03 (Soil)

PAH by 8270D SIM

Naphthalene	0.00998	0.00145	0.00201	mg/Kg	1	L679124	04/29/2023	04/30/2023	
Pyrene	0.000883	0.000643	0.00067	"	"	"	"	"	

Surrogate: 2-Fluorobiphenyl	55.8 %		33-115			"	"	"	
Surrogate: 4-Terphenyl-d14	57.9 %		33-122			"	"	"	
Surrogate: Nitrobenzene-d5	54.8 %		29-110			"	"	"	

pH in Soil by 9045D

pH	8.04			pH Units	1	B3D2721	04/27/2023	04/28/2023	
----	------	--	--	----------	---	---------	------------	------------	--

SAR by 20B Saturated Paste

SAR	4.83			SAR	1	B3D2712	04/27/2023	04/28/2023	
-----	------	--	--	-----	---	---------	------------	------------	--

Specific Conductance Mod. 9050A

Specific Conductance (EC)	2.33		0.00500	mmhos/cm	1	B3D2721	04/27/2023	04/28/2023	
---------------------------	------	--	---------	----------	---	---------	------------	------------	--

Table 915 metals by EPA 6020B

Arsenic	3.50		0.0899	mg/kg	10	B3E0927	05/09/2023	05/12/2023	
Barium	103		8.99	"	"	"	"	"	
Cadmium	0.192		0.0899	"	"	"	"	"	

Origins Laboratory, Inc.



The results in this report apply to the samples analyzed in accordance with the chain of custody document. This analytical report must be reproduced in its entirety.

Eagle Environmental Consulting, LLC
8000 W 44th Ave
Wheat Ridge CO 80033

Martin C Eckert III
Project Number: [none]
Project: Noble - McBain (BainBridge) #1

WH-SS-03@4'

4/25/2023 7:44:00AM

Analyte	Result	Min Detection Limit	Reporting Limit	Units	Dilution	Batch	Prepared	Analyzed	Notes
---------	--------	---------------------	-----------------	-------	----------	-------	----------	----------	-------

Origins Laboratory, Inc.
Y304586-03 (Soil)

Table 915 metals by EPA 6020B

Copper	18.6	8.99	mg/kg	10	B3E0927	05/09/2023	05/12/2023
Lead	37.0	8.99	"	"	"	"	"
Nickel	ND	8.99	"	"	"	"	"
Selenium	0.314	0.0899	"	"	"	"	"
Silver	ND	0.0899	"	"	"	"	"
Zinc	ND	89.9	"	"	"	"	"

Total Metals by 7196A

Chromium, Hexavalent	ND	0.488	1	mg/Kg	1	L681064	04/25/2023	05/10/2023
----------------------	----	-------	---	-------	---	---------	------------	------------

Origins Laboratory, Inc.



The results in this report apply to the samples analyzed in accordance with the chain of custody document. This analytical report must be reproduced in its entirety.

Eagle Environmental Consulting, LLC
8000 W 44th Ave
Wheat Ridge CO 80033

Martin C Eckert III
Project Number: [none]
Project: Noble - McBain (BainBridge) #1

WH-SS-04@4'
4/25/2023 7:46:00AM

Analyte	Result	Min Detection Limit	Reporting Limit	Units	Dilution	Batch	Prepared	Analyzed	Notes
---------	--------	---------------------	-----------------	-------	----------	-------	----------	----------	-------

Origins Laboratory, Inc.
Y304586-04 (Soil)

Boron (DTPA Sorbitol)

Boron	ND	0.985	mg/L	10	B3D2810	04/28/2023	05/01/2023	
-------	----	-------	------	----	---------	------------	------------	--

DRO/ORO by EPA 8015D

Diesel (C10-C28)	33.5	25.0	mg/kg	1	B3D2636	04/26/2023	04/29/2023	
Residual Range Organics (C28-C40)	ND	100	"	"	"	"	"	U

Surrogate: o-Terphenyl	116 %	50-150			"	"	"	
------------------------	-------	--------	--	--	---	---	---	--

GBTEX+TMBs by 8260D

1,2,4-Trimethylbenzene	ND	0.00200	mg/kg	1	B3D2727	04/27/2023	04/28/2023	U
1,3,5-Trimethylbenzene	ND	0.00200	"	"	"	"	"	U
Benzene	ND	0.00200	"	"	"	"	"	U
Ethylbenzene	ND	0.00200	"	"	"	"	"	U
Toluene	ND	0.00200	"	"	"	"	"	U
Xylenes, total	ND	0.00200	"	"	"	"	"	U
Gasoline Range Hydrocarbons	ND	0.200	"	"	"	"	"	U

Surrogate: 1,2-Dichloroethane-d4	107 %	70-130			"	"	"	
----------------------------------	-------	--------	--	--	---	---	---	--

Origins Laboratory, Inc.



The results in this report apply to the samples analyzed in accordance with the chain of custody document. This analytical report must be reproduced in its entirety.

Eagle Environmental Consulting, LLC
8000 W 44th Ave
Wheat Ridge CO 80033

Martin C Eckert III
Project Number: [none]
Project: Noble - McBain (BainBridge) #1

WH-SS-04@4'
4/25/2023 7:46:00AM

Analyte	Result	Min Detection Limit	Reporting Limit	Units	Dilution	Batch	Prepared	Analyzed	Notes
---------	--------	---------------------	-----------------	-------	----------	-------	----------	----------	-------

Origins Laboratory, Inc.
Y304586-04 (Soil)

GBTEX+TMBs by 8260D

Surrogate: Toluene-d8	99.1 %	70-130	B3D27 27	04/27/2023	04/28/2023
Surrogate: 4-Bromofluorobenzene	95.8 %	70-130	"	"	"

Metals by Saturated Paste by EPA 6010

Calcium	2.14	0.499	meq/L	10	[CALC]	04/27/2023	04/28/2023
Magnesium	2.01	0.823	"	"	"	"	"
Sodium	9.72	0.435	"	"	"	"	"

PAH by 8270D SIM

1-Methylnaphthalene	ND	0.00109	0.00201	mg/Kg	1	L679124	04/29/2023	04/30/2023
2-Methylnaphthalene	ND	0.00194	0.00201	"	"	"	"	"
Acenaphthene	0.00082	0.000304	0.00067	"	"	"	"	"
Anthracene	ND	0.000334	0.00067	"	"	"	"	"
Benzo(a)anthracene	ND	0.000493	0.00067	"	"	"	"	"
Benzo(a)pyrene	ND	0.000468	0.00067	"	"	"	"	"
Benzo(b)fluoranthene	ND	0.000585	0.00067	"	"	"	"	"
Benzo(k)fluoranthene	ND	0.000437	0.00067	"	"	"	"	"
Chrysene	0.00119	0.000624	0.00067	"	"	"	"	"
Dibenz(a,h)anthracene	ND	0.000614	0.00067	"	"	"	"	"
Fluoranthene	ND	0.000394	0.00067	"	"	"	"	"
Fluorene	0.000587	0.000286	0.00067	"	"	"	"	"

J

Origins Laboratory, Inc.



The results in this report apply to the samples analyzed in accordance with the chain of custody document. This analytical report must be reproduced in its entirety.

Eagle Environmental Consulting, LLC
8000 W 44th Ave
Wheat Ridge CO 80033

Martin C Eckert III
Project Number: [none]
Project: Noble - McBain (BainBridge) #1

WH-SS-04@4'
4/25/2023 7:46:00AM

Analyte	Result	Min Detection Limit	Reporting Limit	Units	Dilution	Batch	Prepared	Analyzed	Notes
---------	--------	---------------------	-----------------	-------	----------	-------	----------	----------	-------

Waypoint Analytical, LLC.
Y304586-04 (Soil)

PAH by 8270D SIM

Indeno(1,2,3-cd)pyrene	ND	0.000627	0.00067	mg/Kg	1	L679124	04/29/2023	04/30/2023
Naphthalene	ND	0.00145	0.00201	"	"	"	"	"
Pyrene	0.00112	0.000643	0.00067	"	"	"	"	"

Surrogate: 2-Fluorobiphenyl	49.7 %	33-115	"	"	"
Surrogate: 4-Terphenyl-d14	57.6 %	33-122	"	"	"
Surrogate: Nitrobenzene-d5	53.3 %	29-110	"	"	"

pH in Soil by 9045D

pH	8.18	pH Units	1	B3D2721	04/27/2023	04/28/2023
----	------	----------	---	---------	------------	------------

SAR by 20B Saturated Paste

SAR	6.75	SAR	1	B3D2712	04/27/2023	04/28/2023
-----	------	-----	---	---------	------------	------------

Specific Conductance Mod. 9050A

Specific Conductance (EC)	2.92	0.00500	mmhos/cm	1	B3D2721	04/27/2023	04/28/2023
---------------------------	------	---------	----------	---	---------	------------	------------

Origins Laboratory, Inc.



The results in this report apply to the samples analyzed in accordance with the chain of custody document. This analytical report must be reproduced in its entirety.

Eagle Environmental Consulting, LLC
8000 W 44th Ave
Wheat Ridge CO 80033

Martin C Eckert III
Project Number: [none]
Project: Noble - McBain (BainBridge) #1

WH-SS-01@4' SAR Rerun1

4/25/2023 7:40:00AM

Analyte	Result	Min Detection Limit	Reporting Limit	Units	Dilution	Batch	Prepared	Analyzed	Notes
---------	--------	---------------------	-----------------	-------	----------	-------	----------	----------	-------

Origins Laboratory, Inc.

Y304586-05 (Soil)

Metals by Saturated Paste by EPA 6010

Calcium	6.45	0.499	meq/L	10	[CALC]	05/09/2023	05/10/2023
Magnesium	6.20	0.823	"	"	"	"	"
Sodium	18.8	0.435	"	"	"	"	"

SAR by 20B Saturated Paste

SAR	7.48		SAR	1	B3E0907	"	"
-----	------	--	-----	---	---------	---	---

Origins Laboratory, Inc.



The results in this report apply to the samples analyzed in accordance with the chain of custody document. This analytical report must be reproduced in its entirety.

Eagle Environmental Consulting, LLC
8000 W 44th Ave
Wheat Ridge CO 80033

Martin C Eckert III
Project Number: [none]
Project: Noble - McBain (BainBridge) #1

WH-SS-01@4' SAR Rerun2

4/25/2023 7:40:00AM

Analyte	Result	Min Detection Limit	Reporting Limit	Units	Dilution	Batch	Prepared	Analyzed	Notes
---------	--------	---------------------	-----------------	-------	----------	-------	----------	----------	-------

Origins Laboratory, Inc.

Y304586-06 (Soil)

Metals by Saturated Paste by EPA 6010

Calcium	6.49	0.499	meq/L	10	[CALC]	05/09/2023	05/10/2023
Magnesium	6.21	0.823	"	"	"	"	"
Sodium	19.0	0.435	"	"	"	"	"

SAR by 20B Saturated Paste

SAR	7.55		SAR	1	B3E0907	"	"
-----	------	--	-----	---	---------	---	---

Origins Laboratory, Inc.



The results in this report apply to the samples analyzed in accordance with the chain of custody document. This analytical report must be reproduced in its entirety.

Eagle Environmental Consulting, LLC
8000 W 44th Ave
Wheat Ridge CO 80033

Martin C Eckert III
Project Number: [none]
Project: Noble - McBain (BainBridge) #1

WH-SS-04@4' SAR Rerun1

4/25/2023 7:46:00AM

Analyte	Result	Min Detection Limit	Reporting Limit	Units	Dilution	Batch	Prepared	Analyzed	Notes
---------	--------	---------------------	-----------------	-------	----------	-------	----------	----------	-------

Origins Laboratory, Inc.

Y304586-07 (Soil)

Metals by Saturated Paste by EPA 6010

Calcium	2.90	0.499	meq/L	10	[CALC]	05/09/2023	05/10/2023
Magnesium	2.59	0.823	"	"	"	"	"
Sodium	11.4	0.435	"	"	"	"	"

SAR by 20B Saturated Paste

SAR	6.87		SAR	1	B3E0907	"	"
-----	------	--	-----	---	---------	---	---

Origins Laboratory, Inc.



The results in this report apply to the samples analyzed in accordance with the chain of custody document. This analytical report must be reproduced in its entirety.

Eagle Environmental Consulting, LLC
8000 W 44th Ave
Wheat Ridge CO 80033

Martin C Eckert III
Project Number: [none]
Project: Noble - McBain (BainBridge) #1

WH-SS-04@4' SAR Rerun2

4/25/2023 7:46:00AM

Analyte	Result	Min Detection Limit	Reporting Limit	Units	Dilution	Batch	Prepared	Analyzed	Notes
---------	--------	---------------------	-----------------	-------	----------	-------	----------	----------	-------

Origins Laboratory, Inc. Y304586-08 (Soil)

Metals by Saturated Paste by EPA 6010

Calcium	3.22	0.499	meq/L	10	[CALC]	05/09/2023	05/10/2023
Magnesium	2.87	0.823	"	"	"	"	"
Sodium	11.5	0.435	"	"	"	"	"

SAR by 20B Saturated Paste

SAR	6.60	SAR	1	B3E0907	"	"
-----	------	-----	---	---------	---	---

Origins Laboratory, Inc.



The results in this report apply to the samples analyzed in accordance with the chain of custody document. This analytical report must be reproduced in its entirety.

Eagle Environmental Consulting, LLC
8000 W 44th Ave
Wheat Ridge CO 80033

Martin C Eckert III
Project Number: [none]
Project: Noble - McBain (BainBridge) #1

Extractable Petroleum Hydrocarbons by 8015D - Quality Control Origins Laboratory, Inc.

Analyte	Result	Reporting Limit	Units	Spike Level	Source Result	%REC	%REC Limits	RPD	RPD Limit	Notes
Batch B3D2636 - EPA 3550B										
Blank (B3D2636-BLK1)					Prepared: 04/26/2023 Analyzed: 04/29/2023					
Diesel (C10-C28)	ND	25.0	mg/kg							U
Residual Range Organics (C28-C40)	ND	100	"							U
Surrogate: o-Terphenyl	23		"	24.9		94.0	50-150			

Origins Laboratory, Inc.



The results in this report apply to the samples analyzed in accordance with the chain of custody document. This analytical report must be reproduced in its entirety.

Eagle Environmental Consulting, LLC
8000 W 44th Ave
Wheat Ridge CO 80033

Martin C Eckert III
Project Number: [none]
Project: Noble - McBain (BainBridge) #1

Extractable Petroleum Hydrocarbons by 8015D - Quality Control Origins Laboratory, Inc.

Analyte	Result	Reporting Limit	Units	Spike Level	Source Result	%REC	%REC Limits	RPD	RPD Limit	Notes
Batch B3D2636 - EPA 3550B										
LCS (B3D2636-BS1)					Prepared: 04/26/2023 Analyzed: 04/29/2023					
Diesel (C10-C28)	930	50.0	mg/kg	1000		93.0	70-130			
Residual Range Organics (C28-C40)	908	200	"	1000		90.8	70-130			
Surrogate: o-Terphenyl	53		"	49.8		107	50-150			

Origins Laboratory, Inc.



The results in this report apply to the samples analyzed in accordance with the chain of custody document. This analytical report must be reproduced in its entirety.

Eagle Environmental Consulting, LLC
8000 W 44th Ave
Wheat Ridge CO 80033

Martin C Eckert III
Project Number: [none]
Project: Noble - McBain (BainBridge) #1

Extractable Petroleum Hydrocarbons by 8015D - Quality Control Origins Laboratory, Inc.

Analyte	Result	Reporting Limit	Units	Spike Level	Source Result	%REC	%REC Limits	RPD	RPD Limit	Notes
---------	--------	-----------------	-------	-------------	---------------	------	-------------	-----	-----------	-------

Batch B3D2636 - EPA 3550B

Matrix Spike (B3D2636-MS1)		Source: Y304537-01			Prepared: 04/26/2023 Analyzed: 04/29/2023					
Diesel (C10-C28)	936	50.0	mg/kg	1000	ND	93.6	70-130			
Residual Range Organics (C28-C40)	910	200	"	1000	ND	91.0	70-130			
Surrogate: o-Terphenyl	52		"	49.8		105	50-150			

Origins Laboratory, Inc.



The results in this report apply to the samples analyzed in accordance with the chain of custody document. This analytical report must be reproduced in its entirety.

Jordan A. Bynon, Project Manager

Eagle Environmental Consulting, LLC
8000 W 44th Ave
Wheat Ridge CO 80033

Martin C Eckert III
Project Number: [none]
Project: Noble - McBain (BainBridge) #1

Extractable Petroleum Hydrocarbons by 8015D - Quality Control

Origins Laboratory, Inc.

Analyte	Result	Reporting Limit	Units	Spike Level	Source Result	%REC	%REC Limits	RPD	RPD Limit	Notes
Batch B3D2636 - EPA 3550B										
Matrix Spike Dup (B3D2636-MSD1)		Source: Y304537-01			Prepared: 04/26/2023 Analyzed: 04/29/2023					
Diesel (C10-C28)	1010	50.0	mg/kg	1000	ND	101	70-130	7.69	35	
Residual Range Organics (C28-C40)	987	200	"	1000	ND	98.7	70-130	8.09	35	
Surrogate: o-Terphenyl	56		"	49.8		112	50-150			

Origins Laboratory, Inc.



The results in this report apply to the samples analyzed in accordance with the chain of custody document. This analytical report must be reproduced in its entirety.

Eagle Environmental Consulting, LLC
8000 W 44th Ave
Wheat Ridge CO 80033

Martin C Eckert III
Project Number: [none]
Project: Noble - McBain (BainBridge) #1

Extractable Petroleum Hydrocarbons by 8015D - Quality Control

Origins Laboratory, Inc.

Analyte	Result	Reporting Limit	Units	Spike Level	Source Result	%REC	%REC Limits	RPD	RPD Limit	Notes
Batch B3D2727 - EPA 5030 (soil)										
Blank (B3D2727-BLK1)					Prepared: 04/27/2023 Analyzed: 04/28/2023					
1,2,4-Trimethylbenzene	ND	0.00200	mg/kg							U
1,3,5-Trimethylbenzene	ND	0.00200	"							U
Benzene	ND	0.00200	"							U
Ethylbenzene	ND	0.00200	"							U
Naphthalene	ND	0.00380	"							U
Toluene	ND	0.00200	"							U
Xylenes, total	ND	0.00200	"							U
Gasoline Range Hydrocarbons	ND	0.200	"							U
Surrogate: 1,2-Dichloroethane-d4	0.13		"	0.125		100	70-130			
Surrogate: Toluene-d8	0.12		"	0.125		99.9	70-130			
Surrogate: 4-Bromofluorobenzene	0.12		"	0.125		95.2	70-130			

Origins Laboratory, Inc.



The results in this report apply to the samples analyzed in accordance with the chain of custody document. This analytical report must be reproduced in its entirety.

Eagle Environmental Consulting, LLC
8000 W 44th Ave
Wheat Ridge CO 80033

Martin C Eckert III
Project Number: [none]
Project: Noble - McBain (BainBridge) #1

Volatile Organic Compounds by GC/MS SW846 8260D - Quality Control
Origins Laboratory, Inc.

Analyte	Result	Reporting Limit	Units	Spike Level	Source Result	%REC	%REC Limits	RPD	RPD Limit	Notes
Batch B3D2727 - EPA 5030 (soil)										
LCS (B3D2727-BS1)					Prepared: 04/27/2023 Analyzed: 04/28/2023					
1,2,4-Trimethylbenzene	0.0971	0.00200	mg/kg	0.100		97.1	70-130			
1,3,5-Trimethylbenzene	0.0973	0.00200	"	0.100		97.3	70-130			
Benzene	0.108	0.00200	"	0.100		108	70-130			
Ethylbenzene	0.0989	0.00200	"	0.100		98.9	70-130			
Naphthalene	0.0870	0.00380	"	0.100		87.0	70-130			
Toluene	0.106	0.00200	"	0.100		106	70-130			
o-Xylene	0.0968	0.00200	"	0.100		96.8	70-130			
m,p-Xylene	0.204	0.00400	"	0.200		102	70-130			
Surrogate: 1,2-Dichloroethane-d4	0.12		"	0.125		96.5	70-130			
Surrogate: Toluene-d8	0.12		"	0.125		98.0	70-130			
Surrogate: 4-Bromofluorobenzene	0.13		"	0.125		105	70-130			

Origins Laboratory, Inc.



The results in this report apply to the samples analyzed in accordance with the chain of custody document. This analytical report must be reproduced in its entirety.

Eagle Environmental Consulting, LLC
8000 W 44th Ave
Wheat Ridge CO 80033

Martin C Eckert III
Project Number: [none]
Project: Noble - McBain (BainBridge) #1

Volatile Organic Compounds by GC/MS SW846 8260D - Quality Control

Origins Laboratory, Inc.

Analyte	Result	Reporting Limit	Units	Spike Level	Source Result	%REC	%REC Limits	RPD	RPD Limit	Notes
Batch B3D2727 - EPA 5030 (soil)										
Matrix Spike (B3D2727-MS1)		Source: Y304583-01			Prepared: 04/27/2023 Analyzed: 04/28/2023					
1,2,4-Trimethylbenzene	0.0871	0.00200	mg/kg	0.100	ND	87.1	70-130			
1,3,5-Trimethylbenzene	0.0854	0.00200	"	0.100	ND	85.4	70-130			
Benzene	0.0970	0.00200	"	0.100	ND	97.0	70-130			
Ethylbenzene	0.0879	0.00200	"	0.100	ND	87.9	70-130			
Naphthalene	0.0787	0.00380	"	0.100	ND	78.7	70-130			
Toluene	0.0952	0.00200	"	0.100	ND	95.2	70-130			
o-Xylene	0.0877	0.00200	"	0.100	ND	87.7	70-130			
m,p-Xylene	0.183	0.00400	"	0.200	ND	91.4	70-130			
Surrogate: 1,2-Dichloroethane-d4	0.12		"	0.125		99.3	70-130			
Surrogate: Toluene-d8	0.12		"	0.125		98.1	70-130			
Surrogate: 4-Bromofluorobenzene	0.13		"	0.125		104	70-130			

Origins Laboratory, Inc.



The results in this report apply to the samples analyzed in accordance with the chain of custody document. This analytical report must be reproduced in its entirety.

Eagle Environmental Consulting, LLC
8000 W 44th Ave
Wheat Ridge CO 80033

Martin C Eckert III
Project Number: [none]
Project: Noble - McBain (BainBridge) #1

Volatile Organic Compounds by GC/MS SW846 8260D - Quality Control

Origins Laboratory, Inc.

Analyte	Result	Reporting Limit	Units	Spike Level	Source Result	%REC	%REC Limits	RPD	RPD Limit	Notes
Batch B3D2727 - EPA 5030 (soil)										
Matrix Spike Dup (B3D2727-MSD1)			Source: Y304583-01		Prepared: 04/27/2023 Analyzed: 04/28/2023					
1,2,4-Trimethylbenzene	0.0892	0.00200	mg/kg	0.100	ND	89.2	70-130	2.38	20	
1,3,5-Trimethylbenzene	0.0887	0.00200	"	0.100	ND	88.7	70-130	3.84	20	
Benzene	0.0993	0.00200	"	0.100	ND	99.3	70-130	2.32	20	
Ethylbenzene	0.0908	0.00200	"	0.100	ND	90.8	70-130	3.18	20	
Naphthalene	0.0852	0.00380	"	0.100	ND	85.2	70-130	7.93	20	
Toluene	0.0960	0.00200	"	0.100	ND	96.0	70-130	0.795	20	
o-Xylene	0.0899	0.00200	"	0.100	ND	89.9	70-130	2.52	20	
m,p-Xylene	0.189	0.00400	"	0.200	ND	94.3	70-130	3.05	20	
Surrogate: 1,2-Dichloroethane-d4	0.13		"	0.125		100	70-130			
Surrogate: Toluene-d8	0.12		"	0.125		96.0	70-130			
Surrogate: 4-Bromofluorobenzene	0.13		"	0.125		105	70-130			

Origins Laboratory, Inc.



The results in this report apply to the samples analyzed in accordance with the chain of custody document. This analytical report must be reproduced in its entirety.

Eagle Environmental Consulting, LLC
8000 W 44th Ave
Wheat Ridge CO 80033

Martin C Eckert III
Project Number: [none]
Project: Noble - McBain (BainBridge) #1

Volatile Organic Compounds by GC/MS SW846 8260D - Quality Control

Origins Laboratory, Inc.

Analyte	Result	Reporting Limit	Units	Spike Level	Source Result	%REC	%REC Limits	RPD	RPD Limit	Notes
---------	--------	-----------------	-------	-------------	---------------	------	-------------	-----	-----------	-------

Metals by EPA 6000/7000 Series Methods - Quality Control

Origins Laboratory, Inc.

Analyte	Result	Reporting Limit	Units	Spike Level	Source Result	%REC	%REC Limits	RPD	RPD Limit	Notes
---------	--------	-----------------	-------	-------------	---------------	------	-------------	-----	-----------	-------

Batch B3E0927 - EPA 3050B

Blank (B3E0927-BLK1)

Prepared: 05/09/2023 Analyzed: 05/12/2023

Arsenic	ND	0.000100	mg/kg
Barium	ND	0.0100	"
Cadmium	ND	0.000100	"
Copper	ND	0.0100	"
Lead	ND	0.0100	"
Nickel	ND	0.0100	"
Selenium	ND	0.000100	"
Silver	ND	0.000100	"
Zinc	ND	0.100	"

LCS (B3E0927-BS1)

Prepared: 05/09/2023 Analyzed: 05/12/2023

Arsenic	0.0529	0.000100	mg/kg	0.0500	106	80-120
Barium	5.60	0.0100	"	5.00	112	80-120
Cadmium	0.0532	0.000100	"	0.0500	106	80-120
Copper	0.540	0.0100	"	0.500	108	80-120
Lead	0.0516	0.0100	"	0.0500	103	80-120
Nickel	0.0514	0.0100	"	0.0500	103	80-120
Selenium	0.0572	0.000100	"	0.0500	114	80-120
Silver	0.0527	0.000100	"	0.0500	105	80-120
Zinc	0.533	0.100	"	0.500	107	80-120

Matrix Spike (B3E0927-MS1)

Source: Y305245-01

Prepared: 05/09/2023 Analyzed: 05/12/2023

Origins Laboratory, Inc.



The results in this report apply to the samples analyzed in accordance with the chain of custody document. This analytical report must be reproduced in its entirety.

Eagle Environmental Consulting, LLC
8000 W 44th Ave
Wheat Ridge CO 80033

Martin C Eckert III
Project Number: [none]
Project: Noble - McBain (BainBridge) #1

Metals by EPA 6000/7000 Series Methods - Quality Control
Origins Laboratory, Inc.

Analyte	Result	Reporting Limit	Units	Spike Level	Source Result	%REC	%REC Limits	RPD	RPD Limit	Notes
Batch B3E0927 - EPA 3050B										
Matrix Spike (B3E0927-MS1)		Source: Y305245-01			Prepared: 05/09/2023 Analyzed: 05/12/2023					
Arsenic	12.5	0.0870	mg/kg	4.35	8.04	103	75-125			
Barium	861	8.70	"	435	75.4	181	75-125			QM-07
Cadmium	4.80	0.0870	"	4.35	0.154	107	75-125			
Copper	53.3	8.70	"	43.5	12.3	94.4	75-125			
Lead	15.1	8.70	"	4.35	11.5	83.3	75-125			
Nickel	19.2	8.70	"	4.35	16.2	69.4	75-125			QM-07
Selenium	5.06	0.0870	"	4.35	0.443	106	75-125			
Silver	4.64	0.0870	"	4.35	0.0627	105	75-125			
Zinc	94.1	87.0	"	43.5	52.5	95.7	75-125			
Matrix Spike Dup (B3E0927-MSD1)		Source: Y305245-01			Prepared: 05/09/2023 Analyzed: 05/12/2023					
Arsenic	13.3	0.0847	mg/kg	4.24	8.04	124	75-125	5.96	20	
Barium	535	8.47	"	424	75.4	108	75-125	46.8	20	QR-DUP
Cadmium	4.56	0.0847	"	4.24	0.154	104	75-125	5.14	20	
Copper	51.6	8.47	"	42.4	12.3	92.9	75-125	3.27	20	
Lead	15.5	8.47	"	4.24	11.5	93.4	75-125	2.17	20	
Nickel	18.9	8.47	"	4.24	16.2	65.5	75-125	1.30	20	QM-07
Selenium	5.41	0.0847	"	4.24	0.443	117	75-125	6.66	20	
Silver	4.39	0.0847	"	4.24	0.0627	102	75-125	5.55	20	
Zinc	91.9	84.7	"	42.4	52.5	92.9	75-125	2.44	20	

Origins Laboratory, Inc.



The results in this report apply to the samples analyzed in accordance with the chain of custody document. This analytical report must be reproduced in its entirety.

Eagle Environmental Consulting, LLC
8000 W 44th Ave
Wheat Ridge CO 80033

Martin C Eckert III
Project Number: [none]
Project: Noble - McBain (BainBridge) #1

Classical Chemistry Parameters - Quality Control

Origins Laboratory, Inc.

Analyte	Result	Reporting Limit	Units	Spike Level	Source Result	%REC	%REC Limits	RPD	RPD Limit	Notes
---------	--------	-----------------	-------	-------------	---------------	------	-------------	-----	-----------	-------

Batch B3D2712 - Saturated Paste Metals

Blank (B3D2712-BLK1)

Prepared: 04/27/2023 Analyzed: 04/28/2023

SAR	0.00		SAR
Calcium PPM	ND	10.0	mg/L
Magnesium PPM	ND	10.0	"
Sodium PPM	ND	10.0	"

Duplicate (B3D2712-DUP1)

Source: Y304557-07

Prepared: 04/27/2023 Analyzed: 04/28/2023

SAR	0.00		SAR	51.4		200	200
Calcium PPM	ND	100	mg/L	624			50
Magnesium PPM	ND	100	"	248			50
Sodium PPM	3.85	100	"	6000		200	50 QR-DUP

Batch B3D2810 - DTPA Sorbitol Preparation

Blank (B3D2810-BLK1)

Prepared: 04/28/2023 Analyzed: 05/01/2023

Boron	ND	0.100	mg/L
-------	----	-------	------

Duplicate (B3D2810-DUP1)

Source: Y304583-01

Prepared: 04/28/2023 Analyzed: 05/01/2023

Boron	0.213	0.0996	mg/L	0.238		11.0	50
-------	-------	--------	------	-------	--	------	----

Batch B3E0907 - Saturated Paste Metals

Blank (B3E0907-BLK1)

Prepared: 05/09/2023 Analyzed: 05/10/2023

Calcium PPM	ND	10.0	mg/L
SAR	0.00		SAR
Magnesium PPM	ND	10.0	mg/L
Sodium PPM	ND	10.0	"

Origins Laboratory, Inc.



The results in this report apply to the samples analyzed in accordance with the chain of custody document. This analytical report must be reproduced in its entirety.

Eagle Environmental Consulting, LLC
8000 W 44th Ave
Wheat Ridge CO 80033

Martin C Eckert III
Project Number: [none]
Project: Noble - McBain (BainBridge) #1

Classical Chemistry Parameters - Quality Control Origins Laboratory, Inc.

Analyte	Result	Reporting Limit	Units	Spike Level	Source Result	%REC	%REC Limits	RPD	RPD Limit	Notes
---------	--------	-----------------	-------	-------------	---------------	------	-------------	-----	-----------	-------

Batch B3E0907 - Saturated Paste Metals

Duplicate (B3E0907-DUP1)		Source: Y305222-01			Prepared: 05/09/2023 Analyzed: 05/10/2023					
Calcium PPM	9.02	10.0	mg/L		8.35			7.71	50	
SAR	0.00		SAR		0.712			200	200	
Magnesium PPM	1.81	10.0	mg/L		1.73			4.52	50	
Sodium PPM	9.14	10.0	"		8.65			5.51	50	

Origins Laboratory, Inc.



The results in this report apply to the samples analyzed in accordance with the chain of custody document. This analytical report must be reproduced in its entirety.

Eagle Environmental Consulting, LLC
8000 W 44th Ave
Wheat Ridge CO 80033

Martin C Eckert III
Project Number: [none]
Project: Noble - McBain (BainBridge) #1

Saturated Paste - Quality Control Origins Laboratory, Inc.

Analyte	Result	Reporting Limit	Units	Spike Level	Source Result	%REC	%REC Limits	RPD	RPD Limit	Notes
Batch B3D2721 - Saturated Paste pH/EC										
Blank (B3D2721-BLK1)					Prepared: 04/27/2023 Analyzed: 04/28/2023					
Specific Conductance (EC)	ND	0.00500	mmhos/cm							
Duplicate (B3D2721-DUP1)					Source: Y304557-07 Prepared: 04/27/2023 Analyzed: 04/28/2023					
Specific Conductance (EC)	28.7	0.00500	mmhos/cm		26.4			8.13	25	
pH	6.73		pH Units		8.07			18.1	25	
Batch B3E0909 - Saturated Paste pH/EC										
Duplicate (B3E0909-DUP1)					Source: Y305230-01 Prepared: 05/09/2023 Analyzed: 05/10/2023					
pH	8.07		pH Units		7.99			0.996	25	

Origins Laboratory, Inc.



The results in this report apply to the samples analyzed in accordance with the chain of custody document. This analytical report must be reproduced in its entirety.

Eagle Environmental Consulting, LLC
8000 W 44th Ave
Wheat Ridge CO 80033

Martin C Eckert III
Project Number: [none]
Project: Noble - McBain (BainBridge) #1

Total Metals by 7196A - Quality Control Waypoint Analytical, LLC.

Analyte	Result	Reporting Limit	Units	Spike Level	Source Result	%REC	%REC Limits	RPD	RPD Limit	Notes
Batch L681064 -										
DUP (L 90868-DUP)	Source: 90868				Prepared: Analyzed: 05/10/2023					
Chromium, Hexavalent	ND	1	mg/Kg		<1.00	-		0	20	
MS (L 90868-MS)	Source: 90868				Prepared: Analyzed: 05/10/2023					
Chromium, Hexavalent	20.1	2.5	mg/Kg	38.6	<1.22	52	75-125			*
LCS (LCS)					Prepared: Analyzed: 05/10/2023					
Chromium, Hexavalent	7.34	0.5	mg/Kg	8		92	75-125			
LRB (LRB)					Prepared: Analyzed: 05/10/2023					
Chromium, Hexavalent	ND	0.5	mg/Kg				-			

Origins Laboratory, Inc.



The results in this report apply to the samples analyzed in accordance with the chain of custody document. This analytical report must be reproduced in its entirety.

Eagle Environmental Consulting, LLC
8000 W 44th Ave
Wheat Ridge CO 80033

Martin C Eckert III
Project Number: [none]
Project: Noble - McBain (BainBridge) #1

PAH by 8270D SIM - Quality Control
Waypoint Analytical, LLC.

Analyte	Result	Reporting Limit	Units	Spike Level	Source Result	%REC	%REC Limits	RPD	RPD Limit	Notes
---------	--------	-----------------	-------	-------------	---------------	------	-------------	-----	-----------	-------

Batch L679124 - 3550B

MSD (L 81629-MSD-L679124)		Source: 81629			Prepared: 04/29/2023 Analyzed: 04/30/2023					
Pyrene	0.289	0.0134	mg/Kg dry	0.165	0.15	84.2	30-130	58.6	30	*
Benzo(k)fluoranthene	0.139	0.0134	"	0.165	<0.00874	84.2	30-130	5.9	30	
Benzo(a)pyrene	0.155	0.0134	"	0.165	0.0186	82.6	30-130	20.6	30	
1-Methylnaphthalene	0.203	0.0402	"	0.165	0.155	29	30-130	35.3	30	*
2-Methylnaphthalene	0.202	0.0402	"	0.165	0.139	38.1	30-130	58.9	30	*
Acenaphthene	0.181	0.0134	"	0.165	0.0568	75.2	30-130	33.5	30	*
Dibenz(a,h)anthracene	0.0928	0.0134	"	0.165	<0.0123	56.2	30-130	2.4	30	
Benzo(a)anthracene	0.155	0.0134	"	0.165	<0.00986	93.9	30-130	19.8	30	
Naphthalene	0.166	0.0402	"	0.165	0.0749	55.2	30-130	24.3	30	
Benzo(b)fluoranthene	0.15	0.0134	"	0.165	0.0233	76.7	30-130	38	30	*
Chrysene	0.161	0.0134	"	0.165	0.0209	84.9	30-130	15.3	30	
Fluoranthene	0.168	0.0134	"	0.165	0.0128	94	30-130	28.5	30	
Fluorene	0.209	0.0134	"	0.165	0.0589	90.9	30-130	43.7	30	*
Indeno(1,2,3-cd)pyrene	0.0886	0.0134	"	0.165	0.0133	45.6	30-130	14.6	30	
Anthracene	0.131	0.0134	"	0.165	0.0275	62.7	30-130	3.8	30	
Surrogate: Nitrobenzene-d5	60.3		"	0.33	215	60.3	29-110			
Surrogate: 2-Fluorobiphenyl	68.4		"	0.33	237	68.4	33-115			
Surrogate: 4-Terphenyl-d14	78.7		"	0.33	270	78.7	33-122			

MS (L 81629-MS-L679124)		Source: 81629			Prepared: 04/29/2023 Analyzed: 04/30/2023					
Anthracene	0.126	0.0134	mg/Kg dry	0.165	0.0275	59.6	30-130			
Naphthalene	0.13	0.0402	"	0.165	0.0749	33.3	30-130			
Pyrene	0.158	0.0134	"	0.165	0.15	4.8	30-130			*
Acenaphthene	0.129	0.0134	"	0.165	0.0568	43.7	30-130			
Indeno(1,2,3-cd)pyrene	0.0765	0.0134	"	0.165	0.0133	38.3	30-130			
Benzo(a)pyrene	0.126	0.0134	"	0.165	0.0186	65	30-130			
Dibenz(a,h)anthracene	0.0951	0.0134	"	0.165	<0.0123	57.6	30-130			

Origins Laboratory, Inc.



The results in this report apply to the samples analyzed in accordance with the chain of custody document. This analytical report must be reproduced in its entirety.

Eagle Environmental Consulting, LLC
8000 W 44th Ave
Wheat Ridge CO 80033

Martin C Eckert III
Project Number: [none]
Project: Noble - McBain (BainBridge) #1

PAH by 8270D SIM - Quality Control
Waypoint Analytical, LLC.

Analyte	Result	Reporting Limit	Units	Spike Level	Source Result	%REC	%REC Limits	RPD	RPD Limit	Notes
---------	--------	-----------------	-------	-------------	---------------	------	-------------	-----	-----------	-------

Batch L679124 - 3550B

MS (L 81629-MS-L679124)		Source: 81629			Prepared: 04/29/2023 Analyzed: 04/30/2023					
Chrysene	0.138	0.0134	mg/Kg dry	0.165	0.0209	70.9	30-130			
Benzo(k)fluoranthene	0.131	0.0134	"	0.165	<0.00874	79.3	30-130			
Benzo(a)anthracene	0.127	0.0134	"	0.165	<0.00986	76.9	30-130			
2-Methylnaphthalene	0.11	0.0402	"	0.165	0.139	0	30-130			*
1-Methylnaphthalene	0.142	0.0402	"	0.165	0.155	0	30-130			*
Fluoranthene	0.126	0.0134	"	0.165	0.0128	68.6	30-130			
Fluorene	0.134	0.0134	"	0.165	0.0589	45.5	30-130			
Benzo(b)fluoranthene	0.102	0.0134	"	0.165	0.0233	47.6	30-130			
Surrogate: Nitrobenzene-d5	57.5		"	0.33	215	57.5	29-110			
Surrogate: 4-Terphenyl-d14	74.5		"	0.33	270	74.5	33-122			
Surrogate: 2-Fluorobiphenyl	67.2		"	0.33	237	67.2	33-115			

LCS (LCS-L679124)		Prepared: 04/29/2023 Analyzed: 04/30/2023								
Naphthalene	0.11	0.00201	mg/Kg	0.167		65.8	30-130			
Pyrene	0.126	0.00067	"	0.167		75.4	30-130			
Benzo(b)fluoranthene	0.117	0.00067	"	0.167		70	30-130			
1-Methylnaphthalene	0.108	0.00201	"	0.167		64.6	30-130			
2-Methylnaphthalene	0.109	0.00201	"	0.167		65.2	30-130			
Acenaphthene	0.11	0.00067	"	0.167		65.8	30-130			
Anthracene	0.118	0.00067	"	0.167		70.6	30-130			
Benzo(a)pyrene	0.127	0.00067	"	0.167		76	30-130			
Indeno(1,2,3-cd)pyrene	0.0838	0.00067	"	0.167		50.1	30-130			
Benzo(k)fluoranthene	0.107	0.00067	"	0.167		64	30-130			
Chrysene	0.126	0.00067	"	0.167		75.4	30-130			
Dibenz(a,h)anthracene	0.092	0.00067	"	0.167		55	30-130			
Fluoranthene	0.123	0.00067	"	0.167		73.6	30-130			
Fluorene	0.112	0.00067	"	0.167		67	30-130			

Origins Laboratory, Inc.



The results in this report apply to the samples analyzed in accordance with the chain of custody document. This analytical report must be reproduced in its entirety.

Eagle Environmental Consulting, LLC
8000 W 44th Ave
Wheat Ridge CO 80033

Martin C Eckert III
Project Number: [none]
Project: Noble - McBain (BainBridge) #1

PAH by 8270D SIM - Quality Control
Waypoint Analytical, LLC.

Analyte	Result	Reporting Limit	Units	Spike Level	Source Result	%REC	%REC Limits	RPD	RPD Limit	Notes
Batch L679124 - 3550B										
LCS (LCS-L679124)					Prepared: 04/29/2023 Analyzed: 04/30/2023					
Benzo(a)anthracene	0.125	0.00067	mg/Kg	0.167		74.8	30-130			
Surrogate: Nitrobenzene-d5	69		"	0.333		69	29-110			
Surrogate: 2-Fluorobiphenyl	70.2		"	0.333		70.2	33-115			
Surrogate: 4-Terphenyl-d14	79.8		"	0.333		79.8	33-122			
LRB (LRB-L679124)					Prepared: 04/29/2023 Analyzed: 04/30/2023					
Fluorene	ND	0.00067	mg/Kg				-			
Indeno(1,2,3-cd)pyrene	ND	0.00067	"				-			
Naphthalene	ND	0.00201	"				-			
Benzo(k)fluoranthene	ND	0.00067	"				-			
Fluoranthene	ND	0.00067	"				-			
Dibenz(a,h)anthracene	ND	0.00067	"				-			
Chrysene	ND	0.00067	"				-			
Benzo(b)fluoranthene	ND	0.00067	"				-			
Benzo(a)pyrene	ND	0.00067	"				-			
Benzo(a)anthracene	ND	0.00067	"				-			
Pyrene	ND	0.00067	"				-			
Acenaphthene	ND	0.00067	"				-			
2-Methylnaphthalene	ND	0.00201	"				-			
1-Methylnaphthalene	ND	0.00201	"				-			
Anthracene	ND	0.00067	"				-			
Surrogate: Nitrobenzene-d5	67.5		"	0.333		67.5	29-110			
Surrogate: 4-Terphenyl-d14	74.1		"	0.333		74.1	33-122			
Surrogate: 2-Fluorobiphenyl	69.6		"	0.333		69.6	33-115			

Origins Laboratory, Inc.



The results in this report apply to the samples analyzed in accordance with the chain of custody document. This analytical report must be reproduced in its entirety.

Eagle Environmental Consulting, LLC
8000 W 44th Ave
Wheat Ridge CO 80033

Martin C Eckert III
Project Number: [none]
Project: Noble - McBain (BainBridge) #1

Notes and Definitions

U Sample is Non-Detect.

QR-DUP RPD exceeds QC acceptance criteria, this indicates source sample is not homogenous.

QM-07 The spike recovery was outside acceptance limits for the MS and/or MSD. The batch was accepted based on acceptable LCS recovery.

J Estimated Value. Analyte below reported quantitation limit.

* QC Failure

ND Analyte NOT DETECTED at or above the reporting limit

RPD Relative Percent Difference

All soil results are reported on a wet weight basis.

Calculated results may use J-flag data (instead of reported "ND") as part of calculation to provide a more accurate result.

Origins Laboratory, Inc.



The results in this report apply to the samples analyzed in accordance with the chain of custody document. This analytical report must be reproduced in its entirety.

Jordan A. Bynon, Project Manager



May 19, 2023

Eagle Environmental Consulting, LLC

Martin C Eckert III

8000 W 44th Ave

Wheat Ridge CO 80033

Project Name - Noble - Macbain (Bainbridge) #1 Project Number - [none]

Attached are your analytical results for Noble - Macbain (Bainbridge) #1 received by Origins Laboratory, Inc. May 09, 2023. This project is associated with Origins project number Y305274-01.

The analytical results in the following report were analyzed under the guidelines of EPA Methods. These methods are identified as follows; "SW" are defined in SW-846, "EPA" are defined in 40CFR part 136 and "SM" are defined in the most current revision of Standard Methods For the Examination of Water and Wastewater.

The analytical results apply specifically to the samples and analyses specified per the attached Chain of Custody. As such, this report shall not be reproduced except in full, without the written approval of Origin's laboratory.

Unless otherwise noted, the analytical results for all soil samples are reported on a wet weight basis. All analytical analyses were performed under NELAP guidelines unless noted by a data qualifier.

Any holding time exceedances, deviations from the method specifications or deviations from Origins Laboratory's Standard Operating Procedures are outlined in the case narrative.

Thank you for selecting Origins for your analytical needs. Please contact us with any questions concerning this report, or if we can help with anything at all.

Origins Laboratory, Inc.
303.433.1322
o-squad@oelabinc.com



1725 Elk Place, Denver, CO 80211 | Phone: 303.433.1322 | Fax: 303.265.9645

Eagle Environmental Consulting, LLC

8000 W 44th Ave

Wheat Ridge CO 80033

Martin C Eckert III

Project Number: [none]

Project: Noble - Macbain (Bainbridge) #1

CROSS REFERENCE REPORT

Sample ID	Laboratory ID	Matrix	Date Sampled	Date Received
Background-01@2'	Y305274-01	Soil	April 25, 2023 7:50	05/09/2023 14:26

Origins Laboratory, Inc.



The results in this report apply to the samples analyzed in accordance with the chain of custody document. This analytical report must be reproduced in its entirety.

Eagle Environmental Consulting, LLC
8000 W 44th Ave
Wheat Ridge CO 80033

Martin C Eckert III
Project Number: [none]
Project: Noble - Macbain (Bainbridge) #1

Origins Laboratory

F-012207-01-R1
Effective Date: 01/09/12

Sample Receipt Checklist

Origins Work Order: Y305274

Client: Eagle

Client Project ID: Macbain #1

Checklist Completed by: JG/TSM

Shipped Via: 45

(UPS, FedEx, Hand Delivered, Pick-up, etc.)

Date/time completed: 5/10/23

Airbill #: N/A

Matrix(s) Received: (Check all that apply): ☒ Soil/Solid ☐ Water ☐ Other: _____

Cooler Number/Temperature: 1 / 4.0 °C 1 / _____ °C 1 / _____ °C (Describe) _____ °C

Thermometer ID: T004

Requirement Description	Yes	No	N/A	Comments (if any)
If samples require cooling, was the temperature between 0°C to ≤ 6°C ⁽¹⁾ ?	/			
Is there ice present (document if blue ice is used)	/			
Are custody seals present on cooler? (if so, document in comments if they are signed and dated, broken or intact)			/	
Are custody seals present on each sample container? (if so, document in comments if they are signed and dated, broken or intact)			/	
Were all samples received intact ⁽¹⁾ ?	/			
Was adequate sample volume provided ⁽¹⁾ ?	/			
Are short holding time analytes or samples with HTs due within 48 hours present ⁽¹⁾ ?		/		
Is a chain-of-custody (COC) present and filled out completely ⁽¹⁾ ?	/			
Does the COC agree with the number and type of sample bottles received ⁽¹⁾ ?	/			
Do the sample IDs on the bottle labels match the COC ⁽¹⁾ ?	/			
Is the COC properly relinquished by the client with date and time recorded ⁽¹⁾ ?	/			
For volatiles in water – is there headspace (> ¼ inch bubble) present? If yes, contact client and note in narrative.			/	
Are samples preserved that require preservation and was it checked ⁽¹⁾ ? (note ID of confirmation instrument used in comments) / (preservation is not confirmed for subcontracted analyses in order to insure sample integrity)/(pH <2 for samples preserved with HNO ₃ , HCL, H ₂ SO ₄) / (pH >10 for samples preserved with NaAsO ₂ +NaOH, ZnAc+NaOH)			/	
Additional Comments (if any):				

⁽¹⁾If NO, then contact the client before proceeding with analysis and note date/time and person contacted as well as the corrective action to in the additional comments (above) and the case narrative.

Reviewed by (Project Manager) [Signature]

Date/Time Reviewed 5/11/23

Origins Laboratory, Inc.

[Signature]

The results in this report apply to the samples analyzed in accordance with the chain of custody document. This analytical report must be reproduced in its entirety.

Eagle Environmental Consulting, LLC
8000 W 44th Ave
Wheat Ridge CO 80033

Martin C Eckert III
Project Number: [none]
Project: Noble - Macbain (Bainbridge) #1

Background-01@2'
4/25/2023 7:50:00AM

Analyte	Result	Reporting Limit	Units	Dilution	Batch	Analyst	Prepared	Analyzed	Notes
---------	--------	-----------------	-------	----------	-------	---------	----------	----------	-------

Origins Laboratory, Inc.
Y305274-01 (Soil)

Metals by Saturated Paste by EPA 6010

Calcium	24.9	0.499	meq/L	10	[CALC]	KAP	05/11/2023	05/12/2023
Magnesium	25.1	0.823	"	"	"	KAP	"	"
Sodium	29.8	0.435	"	"	"	KAP	"	"

pH in Soil by 9045D

pH	8.16		pH Units	1	B3E1123	HJD	05/11/2023	05/12/2023
----	------	--	----------	---	---------	-----	------------	------------

SAR by 20B Saturated Paste

SAR	5.95		SAR	1	B3E1119	KAP	05/11/2023	05/12/2023
-----	------	--	-----	---	---------	-----	------------	------------

Table 915 metals by EPA 6020B

Arsenic	2.47	0.0858	mg/kg	10	B3E1014	CNG	05/10/2023	05/15/2023
Barium	83.2	8.58	"	"	"	CNG	"	"
Cadmium	0.136	0.0858	"	"	"	CNG	"	"
Copper	10.0	8.58	"	"	"	CNG	"	"
Lead	9.89	8.58	"	"	"	CNG	"	"
Nickel	ND	8.58	"	"	"	CNG	"	"
Selenium	0.121	0.0858	"	"	"	CNG	"	"
Silver	ND	0.0858	"	"	"	CNG	"	"
Zinc	ND	85.8	"	"	"	CNG	"	"

Origins Laboratory, Inc.



The results in this report apply to the samples analyzed in accordance with the chain of custody document. This analytical report must be reproduced in its entirety.

Eagle Environmental Consulting, LLC
8000 W 44th Ave
Wheat Ridge CO 80033

Martin C Eckert III
Project Number: [none]
Project: Noble - Macbain (Bainbridge) #1

Metals by EPA 6000/7000 Series Methods - Quality Control

Origins Laboratory, Inc.

Analyte	Result	Reporting Limit	Units	Spike Level	Source Result	%REC	%REC Limits	RPD	RPD Limit	Notes
---------	--------	-----------------	-------	-------------	---------------	------	-------------	-----	-----------	-------

Batch B3E1014 - EPA 3050B

Blank (B3E1014-BLK1)

Prepared: 05/10/2023 Analyzed: 05/15/2023

Arsenic	ND	0.000100	mg/kg
Barium	ND	0.0100	"
Cadmium	ND	0.000100	"
Copper	ND	0.0100	"
Lead	ND	0.0100	"
Nickel	ND	0.0100	"
Selenium	ND	0.000100	"
Silver	ND	0.000100	"
Zinc	ND	0.100	"

LCS (B3E1014-BS1)

Prepared: 05/10/2023 Analyzed: 05/15/2023

Arsenic	0.0534	0.000100	mg/kg	0.0500	107	80-120
Barium	5.29	0.0100	"	5.00	106	80-120
Cadmium	0.0532	0.000100	"	0.0500	106	80-120
Copper	0.560	0.0100	"	0.500	112	80-120
Lead	0.0513	0.0100	"	0.0500	103	80-120
Nickel	0.0547	0.0100	"	0.0500	109	80-120
Selenium	0.0509	0.000100	"	0.0500	102	80-120
Silver	0.0555	0.000100	"	0.0500	111	80-120
Zinc	0.553	0.100	"	0.500	111	80-120

Matrix Spike (B3E1014-MS1)

Source: Y305106-01

Prepared: 05/10/2023 Analyzed: 05/15/2023

Arsenic	11.8	0.0892	mg/kg	4.46	7.68	92.6	75-125
Barium	624	8.92	"	446	148	107	75-125
Cadmium	4.86	0.0892	"	4.46	0.122	106	75-125
Copper	54.3	8.92	"	44.6	8.43	103	75-125
Lead	14.5	8.92	"	4.46	10.2	96.6	75-125

Origins Laboratory, Inc.



The results in this report apply to the samples analyzed in accordance with the chain of custody document. This analytical report must be reproduced in its entirety.

Eagle Environmental Consulting, LLC
8000 W 44th Ave
Wheat Ridge CO 80033

Martin C Eckert III
Project Number: [none]
Project: Noble - Macbain (Bainbridge) #1

Metals by EPA 6000/7000 Series Methods - Quality Control
Origins Laboratory, Inc.

Analyte	Result	Reporting Limit	Units	Spike Level	Source Result	%REC	%REC Limits	RPD	RPD Limit	Notes
Batch B3E1014 - EPA 3050B										
Matrix Spike (B3E1014-MS1)		Source: Y305106-01			Prepared: 05/10/2023 Analyzed: 05/15/2023					
Nickel	16.9	8.92	mg/kg	4.46	11.9	113	75-125			
Selenium	4.68	0.0892	"	4.46	0.599	91.6	75-125			
Silver	4.87	0.0892	"	4.46	0.0277	109	75-125			
Zinc	89.1	89.2	"	44.6	41.0	108	75-125			
Matrix Spike Dup (B3E1014-MSD1)		Source: Y305106-01			Prepared: 05/10/2023 Analyzed: 05/15/2023					
Arsenic	11.4	0.0906	mg/kg	4.53	7.68	82.6	75-125	3.32	20	QM-07, QR-DUP
Barium	852	9.06	"	453	148	155	75-125	30.9	20	
Cadmium	4.72	0.0906	"	4.53	0.122	102	75-125	2.88	20	
Copper	53.0	9.06	"	45.3	8.43	98.5	75-125	2.41	20	
Lead	14.9	9.06	"	4.53	10.2	104	75-125	2.72	20	
Nickel	17.3	9.06	"	4.53	11.9	118	75-125	1.86	20	
Selenium	5.08	0.0906	"	4.53	0.599	98.9	75-125	8.14	20	
Silver	4.81	0.0906	"	4.53	0.0277	106	75-125	1.20	20	
Zinc	85.1	90.6	"	45.3	41.0	97.2	75-125	4.59	20	

Origins Laboratory, Inc.



The results in this report apply to the samples analyzed in accordance with the chain of custody document. This analytical report must be reproduced in its entirety.

Eagle Environmental Consulting, LLC
8000 W 44th Ave
Wheat Ridge CO 80033

Martin C Eckert III
Project Number: [none]
Project: Noble - Macbain (Bainbridge) #1

Classical Chemistry Parameters - Quality Control Origins Laboratory, Inc.

Analyte	Result	Reporting Limit	Units	Spike Level	Source Result	%REC	%REC Limits	RPD	RPD Limit	Notes
Batch B3E1119 - Saturated Paste Metals										
Blank (B3E1119-BLK1)					Prepared: 05/11/2023 Analyzed: 05/12/2023					
Calcium PPM	ND	10.0	mg/L							
SAR	0.00		SAR							
Magnesium PPM	ND	10.0	mg/L							
Sodium PPM	ND	10.0	"							
Duplicate (B3E1119-DUP1)					Source: Y305264-03		Prepared: 05/11/2023 Analyzed: 05/12/2023			
Calcium PPM	55.0	10.0	mg/L		45.9			17.9	50	
SAR	0.00		SAR		0.159			200	200	
Magnesium PPM	10.8	10.0	mg/L		9.35			14.6	50	
Sodium PPM	4.69	10.0	"		4.52			3.69	50	

Origins Laboratory, Inc.



The results in this report apply to the samples analyzed in accordance with the chain of custody document. This analytical report must be reproduced in its entirety.

Eagle Environmental Consulting, LLC
8000 W 44th Ave
Wheat Ridge CO 80033

Martin C Eckert III
Project Number: [none]
Project: Noble - Macbain (Bainbridge) #1

Saturated Paste - Quality Control Origins Laboratory, Inc.

Analyte	Result	Reporting Limit	Units	Spike Level	Source Result	%REC	%REC Limits	RPD	RPD Limit	Notes
---------	--------	-----------------	-------	-------------	---------------	------	-------------	-----	-----------	-------

Batch B3E1123 - Saturated Paste pH/EC

Duplicate (B3E1123-DUP1)

Source: Y305264-03

Prepared: 05/11/2023 Analyzed: 05/12/2023

pH	8.09		pH Units	8.14		0.616	25
----	------	--	----------	------	--	-------	----

Origins Laboratory, Inc.



The results in this report apply to the samples analyzed in accordance with the chain of custody document. This analytical report must be reproduced in its entirety.

Eagle Environmental Consulting, LLC

8000 W 44th Ave

Wheat Ridge CO 80033

Martin C Eckert III

Project Number: [none]

Project: Noble - Macbain (Bainbridge) #1

Notes and Definitions

QR-DUP RPD exceeds QC acceptance criteria, this indicates source sample is not homogenous.

QM-07 The spike recovery was outside acceptance limits for the MS and/or MSD. The batch was accepted based on acceptable LCS recovery.

ND Analyte NOT DETECTED at or above the reporting limit

RPD Relative Percent Difference

All soil results are reported at a wet weight basis.

Origins Laboratory, Inc.



The results in this report apply to the samples analyzed in accordance with the chain of custody document. This analytical report must be reproduced in its entirety.



May 03, 2023

Eagle Environmental Consulting, LLC

Martin C Eckert III

8000 W 44th Ave

Wheat Ridge CO 80033

Project Name - Noble - McBain (BainBridge) #1 Project Number - [none]

Attached are your analytical results for Noble - McBain (BainBridge) #1 received by Origins Laboratory, Inc. April 25, 2023. This project is associated with Origins project number Y304585-01.

The analytical results in the following report were analyzed under the guidelines of EPA Methods. These methods are identified as follows; "SW" are defined in SW-846, "EPA" are defined in 40CFR part 136 and "SM" are defined in the most current revision of Standard Methods For the Examination of Water and Wastewater.

The analytical results apply specifically to the samples and analyses specified per the attached Chain of Custody. As such, this report shall not be reproduced except in full, without the written approval of Origin's laboratory.

Unless otherwise noted, the analytical results for all soil samples are reported on a wet weight basis. All analytical analyses were performed under NELAP guidelines unless noted by a data qualifier.

Any holding time exceedances, deviations from the method specifications or deviations from Origins Laboratory's Standard Operating Procedures are outlined in the case narrative.

Thank you for selecting Origins for your analytical needs. Please contact us with any questions concerning this report, or if we can help with anything at all.

Origins Laboratory, Inc.
303.433.1322
o-squad@oelabinc.com



1725 Elk Place, Denver, CO 80211 | Phone: 303.433.1322 | Fax: 303.265.9645

Eagle Environmental Consulting, LLC

8000 W 44th Ave

Wheat Ridge CO 80033

Martin C Eckert III

Project Number: [none]

Project: Noble - McBain (BainBridge) #1

CROSS REFERENCE REPORT

Sample ID	Laboratory ID	Matrix	Date Sampled	Date Received
GW-01	Y304585-01	Water	April 25, 2023 7:48	04/25/2023 14:52

Origins Laboratory, Inc.



The results in this report apply to the samples analyzed in accordance with the chain of custody document. This analytical report must be reproduced in its entirety.

Eagle Environmental Consulting, LLC
8000 W 44th Ave
Wheat Ridge CO 80033

Martin C Eckert III
Project Number: [none]
Project: Noble - McBain (BainBridge) #1

Origins Laboratory

F-012207-01-R1
Effective Date: 01/09/12

Sample Receipt Checklist

Origins Work Order: 4304585

Client: Eagle

Client Project ID: McBain (Bainbridge) #1

Checklist Completed by: EHS

Shipped Via: HD

(UPS, FedEx, Hand Delivered, Pick-up, etc.)

Date/time completed: 4/25/23

Airbill #: NA

Matrix(s) Received: (Check all that apply): Soil/Solid ☒ Water ☐ Other: ☐

Cooler Number/Temperature: 1 / 6.0 °C 1 / 1 °C 1 / 1 °C (Describe)

Thermometer ID: T003

Requirement Description	Yes	No	N/A	Comments (if any)
If samples require cooling, was the temperature between 0°C to ≤ 6°C ⁽¹⁾ ?	/			
Is there ice present (document if blue ice is used)	/			
Are custody seals present on cooler? (if so, document in comments if they are signed and dated, broken or intact)		/		
Are custody seals present on each sample container? (if so, document in comments if they are signed and dated, broken or intact)		/		
Were all samples received intact ⁽¹⁾ ?	/			
Was adequate sample volume provided ⁽¹⁾ ?	/			
Are short holding time analytes or samples with HTs due within 48 hours present ⁽¹⁾ ?		/		
Is a chain-of-custody (COC) present and filled out completely ⁽¹⁾ ?	/			
Does the COC agree with the number and type of sample bottles received ⁽¹⁾ ?	/			
Do the sample IDs on the bottle labels match the COC ⁽¹⁾ ?	/			
Is the COC properly relinquished by the client with date and time recorded ⁽¹⁾ ?	/			
For volatiles in water – is there headspace (> ¼ inch bubble) present? If yes, contact client and note in narrative.		/		
Are samples preserved that require preservation and was it checked ⁽¹⁾ ? (note ID of confirmation instrument used in comments) / (preservation is not confirmed for subcontracted analyses in order to insure sample integrity)/(pH <2 for samples preserved with HNO ₃ , HCL, H ₂ SO ₄) / (pH >10 for samples preserved with NaAsO ₂ +NaOH, ZnAc+NaOH)	/			NC
Additional Comments (if any):				

⁽¹⁾If NO, then contact the client before proceeding with analysis and note date/time and person contacted as well as the corrective action to in the additional comments (above) and the case narrative.

Reviewed by (Project Manager)

Date/Time Reviewed 4/26/23

Origins Laboratory, Inc.

J. Bynon

The results in this report apply to the samples analyzed in accordance with the chain of custody document. This analytical report must be reproduced in its entirety.

Eagle Environmental Consulting, LLC
8000 W 44th Ave
Wheat Ridge CO 80033

Martin C Eckert III
Project Number: [none]
Project: Noble - McBain (BainBridge) #1

GW-01

4/25/2023 7:48:00AM

Analyte	Result	Reporting Limit	Units	Dilution	Batch	Analyst	Prepared	Analyzed	Notes
---------	--------	-----------------	-------	----------	-------	---------	----------	----------	-------

Origins Laboratory, Inc. Y304585-01 (Water)

BTEX+N+TMBs by 8260D

1,2,4-Trimethylbenzene	78.8	2.00	ug/L	1	B3D2720	JSM	04/27/2023	04/28/2023
1,3,5-Trimethylbenzene	49.7	2.00	"	"	"	JSM	"	"
Benzene	31.4	1.00	"	"	"	JSM	"	"
Ethylbenzene	27.1	1.00	"	"	"	JSM	"	"
Naphthalene	3.76	2.00	"	"	"	JSM	"	"
Toluene	166	10.0	"	10	"	ZZZ	"	04/30/2023
Xylenes, total	429	1.00	"	1	"	JSM	"	04/28/2023

Surrogate: 1,2-Dichloroethane-d4	105 %	70-130	"	"	"
Surrogate: Toluene-d8	104 %	70-130	"	"	"
Surrogate: 4-Bromofluorobenzene	97.9 %	70-130	"	"	"

Origins Laboratory, Inc.



The results in this report apply to the samples analyzed in accordance with the chain of custody document. This analytical report must be reproduced in its entirety.

Eagle Environmental Consulting, LLC
8000 W 44th Ave
Wheat Ridge CO 80033

Martin C Eckert III
Project Number: [none]
Project: Noble - McBain (BainBridge) #1

Volatile Organic Compounds by GC/MS SW846 8260D - Quality Control

Origins Laboratory, Inc.

Analyte	Result	Reporting Limit	Units	Spike Level	Source Result	%REC	%REC Limits	RPD	RPD Limit	Notes
Batch B3D2720 - EPA 5030B (Water)										
Blank (B3D2720-BLK1)					Prepared: 04/27/2023 Analyzed: 04/28/2023					
1,2,4-Trimethylbenzene	ND	2.00	ug/L							U
1,3,5-Trimethylbenzene	ND	2.00	"							U
Benzene	ND	1.00	"							U
Ethylbenzene	ND	1.00	"							U
Naphthalene	ND	2.00	"							U
Toluene	ND	1.00	"							U
Xylenes, total	ND	1.00	"							U
Surrogate: 1,2-Dichloroethane-d4	64		"	62.5		102	70-130			
Surrogate: Toluene-d8	62		"	62.5		98.5	70-130			
Surrogate: 4-Bromofluorobenzene	63		"	62.5		101	70-130			

Origins Laboratory, Inc.



The results in this report apply to the samples analyzed in accordance with the chain of custody document. This analytical report must be reproduced in its entirety.

Eagle Environmental Consulting, LLC
8000 W 44th Ave
Wheat Ridge CO 80033

Martin C Eckert III
Project Number: [none]
Project: Noble - McBain (BainBridge) #1

Volatile Organic Compounds by GC/MS SW846 8260D - Quality Control

Origins Laboratory, Inc.

Analyte	Result	Reporting Limit	Units	Spike Level	Source Result	%REC	%REC Limits	RPD	RPD Limit	Notes
Batch B3D2720 - EPA 5030B (Water)										
LCS (B3D2720-BS1)					Prepared: 04/27/2023 Analyzed: 04/28/2023					
1,2,4-Trimethylbenzene	57.9	2.00	ug/L	50.0		116	70-130			
1,3,5-Trimethylbenzene	58.5	2.00	"	50.0		117	70-130			
Benzene	54.7	1.00	"	50.0		109	70-130			
Ethylbenzene	55.2	1.00	"	50.0		110	70-130			
m,p-Xylene	111	2.00	"	100		111	70-130			
Naphthalene	54.9	2.00	"	50.0		110	70-130			
o-Xylene	54.5	1.00	"	50.0		109	70-130			
Toluene	54.5	1.00	"	50.0		109	70-130			
Surrogate: 1,2-Dichloroethane-d4	63		"	62.5		101	70-130			
Surrogate: Toluene-d8	62		"	62.5		99.8	70-130			
Surrogate: 4-Bromofluorobenzene	64		"	62.5		102	70-130			

Origins Laboratory, Inc.



The results in this report apply to the samples analyzed in accordance with the chain of custody document. This analytical report must be reproduced in its entirety.

Eagle Environmental Consulting, LLC
8000 W 44th Ave
Wheat Ridge CO 80033

Martin C Eckert III
Project Number: [none]
Project: Noble - McBain (BainBridge) #1

Volatile Organic Compounds by GC/MS SW846 8260D - Quality Control

Origins Laboratory, Inc.

Analyte	Result	Reporting Limit	Units	Spike Level	Source Result	%REC	%REC Limits	RPD	RPD Limit	Notes
---------	--------	-----------------	-------	-------------	---------------	------	-------------	-----	-----------	-------

Batch B3D2720 - EPA 5030B (Water)

Matrix Spike (B3D2720-MS1)		Source: Y304576-01			Prepared: 04/27/2023 Analyzed: 04/28/2023					
1,2,4-Trimethylbenzene	52.0	2.00	ug/L	50.0	ND	104	70-130			
1,3,5-Trimethylbenzene	54.6	2.00	"	50.0	ND	109	70-130			
Benzene	44.0	1.00	"	50.0	ND	87.9	70-130			
Ethylbenzene	50.5	1.00	"	50.0	ND	101	70-130			
m,p-Xylene	99.1	2.00	"	100	ND	99.1	70-130			
Naphthalene	38.4	2.00	"	50.0	ND	76.9	70-130			
o-Xylene	47.5	1.00	"	50.0	ND	95.0	70-130			
Toluene	48.8	1.00	"	50.0	ND	97.6	70-130			
Surrogate: 1,2-Dichloroethane-d4	58		"	62.5		93.2	70-130			
Surrogate: Toluene-d8	68		"	62.5		109	70-130			
Surrogate: 4-Bromofluorobenzene	66		"	62.5		105	70-130			

Origins Laboratory, Inc.



The results in this report apply to the samples analyzed in accordance with the chain of custody document. This analytical report must be reproduced in its entirety.

Eagle Environmental Consulting, LLC
8000 W 44th Ave
Wheat Ridge CO 80033

Martin C Eckert III
Project Number: [none]
Project: Noble - McBain (BainBridge) #1

Volatile Organic Compounds by GC/MS SW846 8260D - Quality Control

Origins Laboratory, Inc.

Analyte	Result	Reporting Limit	Units	Spike Level	Source Result	%REC	%REC Limits	RPD	RPD Limit	Notes
Batch B3D2720 - EPA 5030B (Water)										
Matrix Spike Dup (B3D2720-MSD1)			Source: Y304576-01		Prepared: 04/27/2023 Analyzed: 04/30/2023					
1,2,4-Trimethylbenzene	44.7	2.00	ug/L	50.0	ND	89.4	70-130	15.1	20	
1,3,5-Trimethylbenzene	51.4	2.00	"	50.0	ND	103	70-130	6.04	20	
Benzene	53.6	1.00	"	50.0	ND	107	70-130	19.8	20	
Ethylbenzene	57.0	1.00	"	50.0	ND	114	70-130	12.1	20	
m,p-Xylene	114	2.00	"	100	ND	114	70-130	14.0	20	
Naphthalene	59.5	2.00	"	50.0	ND	119	70-130	42.9	20	QR-02
o-Xylene	55.4	1.00	"	50.0	ND	111	70-130	15.4	20	
Toluene	55.6	1.00	"	50.0	ND	111	70-130	13.1	20	
Surrogate: 1,2-Dichloroethane-d4	58		"	62.5		93.5	70-130			
Surrogate: Toluene-d8	63		"	62.5		100	70-130			
Surrogate: 4-Bromofluorobenzene	63		"	62.5		101	70-130			

Origins Laboratory, Inc.



The results in this report apply to the samples analyzed in accordance with the chain of custody document. This analytical report must be reproduced in its entirety.

Eagle Environmental Consulting, LLC

8000 W 44th Ave

Wheat Ridge CO 80033

Martin C Eckert III

Project Number: [none]

Project: Noble - McBain (BainBridge) #1

Notes and Definitions

U Sample is Non-Detect.

QR-02 The RPD result exceeded the QC control limits; however, both percent recoveries were acceptable. Sample results for the QC batch were accepted based on percent recoveries and completeness of QC data.

ND Analyte NOT DETECTED at or above the reporting limit

RPD Relative Percent Difference

All soil results are reported at a wet weight basis.

Origins Laboratory, Inc.



The results in this report apply to the samples analyzed in accordance with the chain of custody document. This analytical report must be reproduced in its entirety.