

Storm Water Management and Erosion control
Location Name: CAERUS PICEANCE LLC L17E Pad
Location ID: 334787



Location Overview: Location is approximately 489 yards from West Mamm Creek, is within High Priority/Density/Black Bear Habitat areas & within close proximity to NSO Habitat area
Section/Township/Range: 17 7S92W



Storm water Management and Erosion control
Location Name: CAERUS PICEANCE LLC L17E Pad
Location ID: 334787



North West corner of location.



North East corner of location.



South West corner of location.



South East corner of location.



Storm Water Management and Erosion control
Location Name: CAERUS PICEANCE LLC L17E Pad
Location ID: 334787

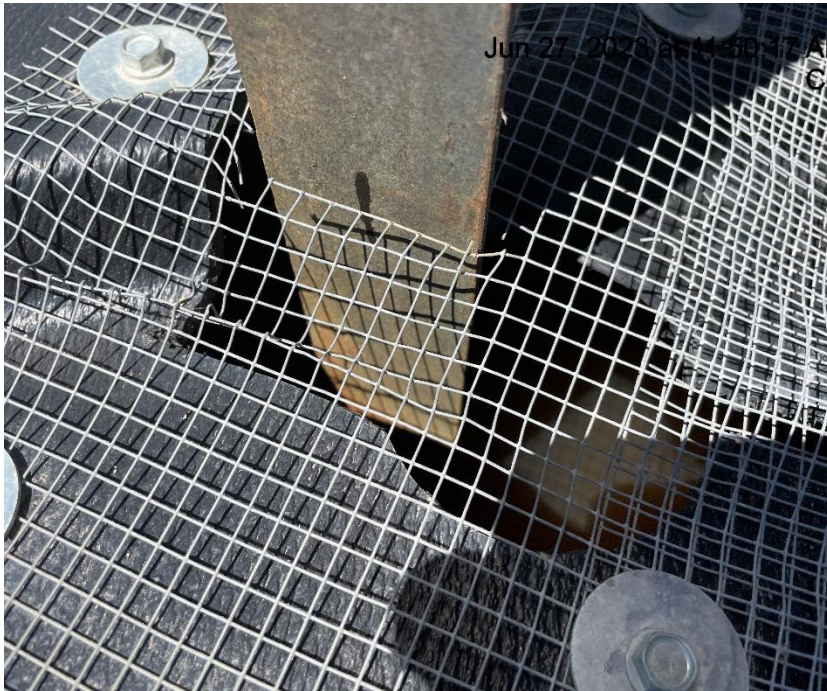


Photo # 2125 Chemical containment full of fluid/failure to maintain chemical BMP's



Photo # 2132 Chemical containment full of fluid/failure to maintain chemical BMP's

Storm Water Management and Erosion control
Location Name: CAERUS PICEANCE LLC L17E Pad
Location ID: 334787



**Photo # 2134 Chemical containment full of
fluid/failure to maintain chemical BMP's**