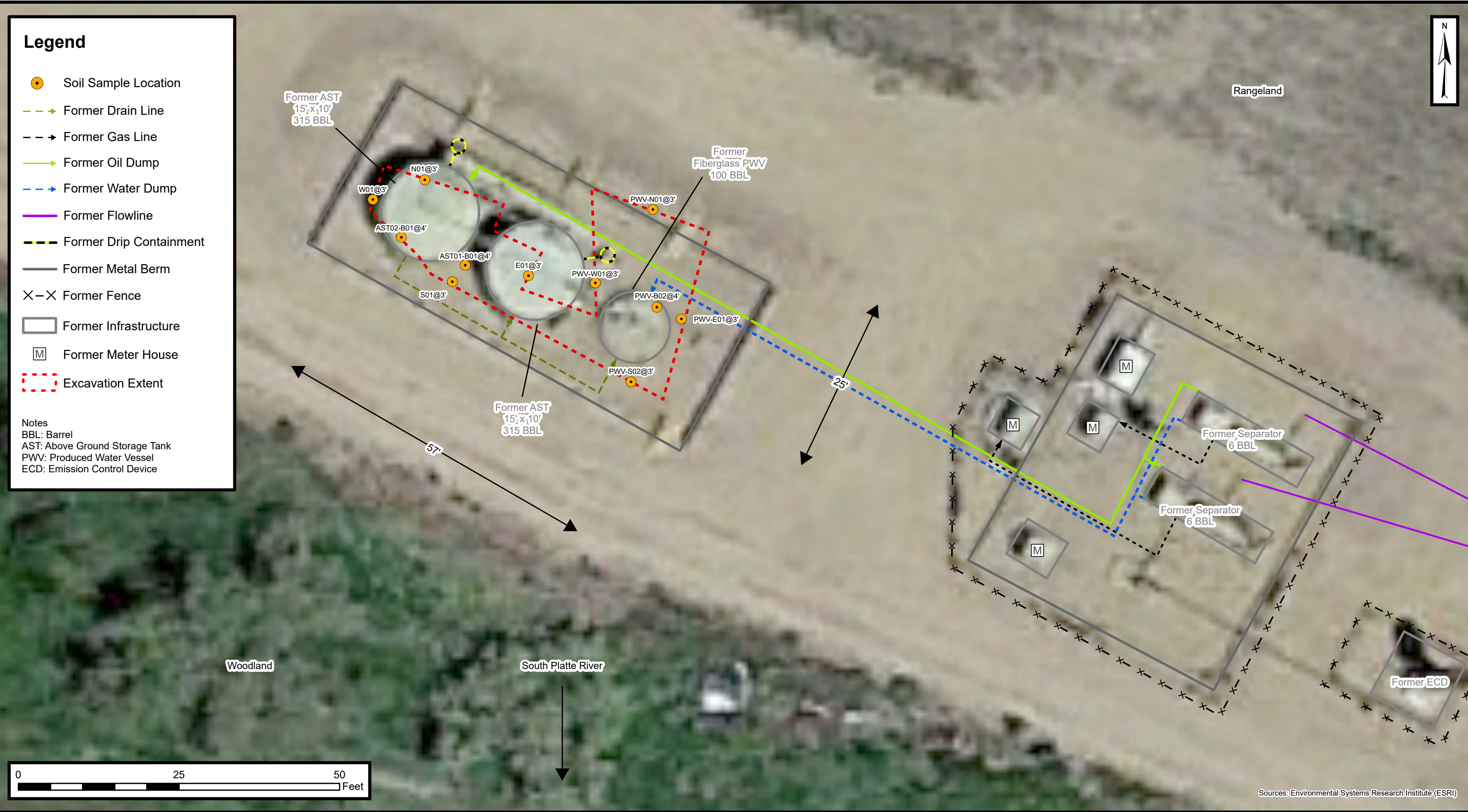


Legend

- Soil Sample Location
- - -> Former Drain Line
- - -> Former Gas Line
- - -> Former Oil Dump
- - -> Former Water Dump
- - -> Former Flowline
- - -> Former Drip Containment
- - -> Former Metal Berm
- X-X Former Fence
- ◻ Former Infrastructure
- [M] Former Meter House
- - - Excavation Extent

Notes
BBL: Barrel
AST: Above Ground Storage Tank
PWV: Produced Water Vessel
ECD: Emission Control Device



Sources: Environmental Systems Research Institute (ESRI)



Excavation Site Map (8/8/2022)
Pope 11-35, Scottdale O SA Facility
Kerr-McGee Oil & Gas Onshore, LP
NWSW SEC 35-T4N-R67W
Weld County, CO
Project Number: 09A1417113

**FIGURE
1B**