



Radial Bond
Gamma Ray
Casing Collar Log

Company		Civitas resources	
Well		Aristocrat Angus 2-4-8	
Field		Wattenberg	
County		Weld	
State		Colorado	
Country		USA	
Company		Civitas resources	
Well		Aristocrat Angus 2-4-8	
Field		Wattenberg	
County		Weld	
State		Colorado	
Country		USA	
Location:		API # : 05-123-30575	
SEC 8 TWP 3N RGE 65W		NENW	
Permanent Datum		Ground Level	
Log Measured From		KB	
Drilling Measured From		KB	
Elevation		4900'	
Other Services		N/A	
K.B. 4912'			
D.F. 4913'			
G.L. 4900'			
Date		28FEB2023	
Run Number		One	
Depth Driller		8295'	
Depth Logger		4082'	
Bottom Logged Interval		4086'	
Top Log Interval		Surface	
Open Hole Size			
Type Fluid		Water	
Density / Viscosity		---	
Max. Recorded Temp.		144	
Estimated Cement Top			
Time Well Ready		1400	
Time Logger on Bottom		1430	
Equipment Number		506	
Location		Kersey, Co	
Recorded By		J. Keel	
Witnessed By		R. Dampier	
Borehole Record		Tubing Record	
Run Number		Bit	
From		To	
Size		Weight	
From		To	
Casing Record		Size	
Surface String		Wgt/Ft	
Prot. String		Top	
Production String		Bottom	
Liner		4.5"	
		11.6#	

<<< Fold Here >>>

All interpretations are opinions based on inferences from electrical or other measurements and we cannot and do not guarantee the accuracy or correctness of any interpretation, and we shall not, except in the case of gross or willful negligence on our part, be liable or responsible for any loss, costs, damages, or expenses incurred or sustained by anyone resulting from any interpretation made by any of our officers, agents or employees. These interpretations are also subject to our general terms and conditions set out in our current Price Schedule.

Comments



Main Pass " 0 " PSI

Database File civitasaristocratangus 2-4-8.db
Dataset Pathname run2/pass5
Presentation Format civitas
Dataset Creation Tue Feb 28 14:39:12 2023
Charted by Depth in Feet scaled 1:240

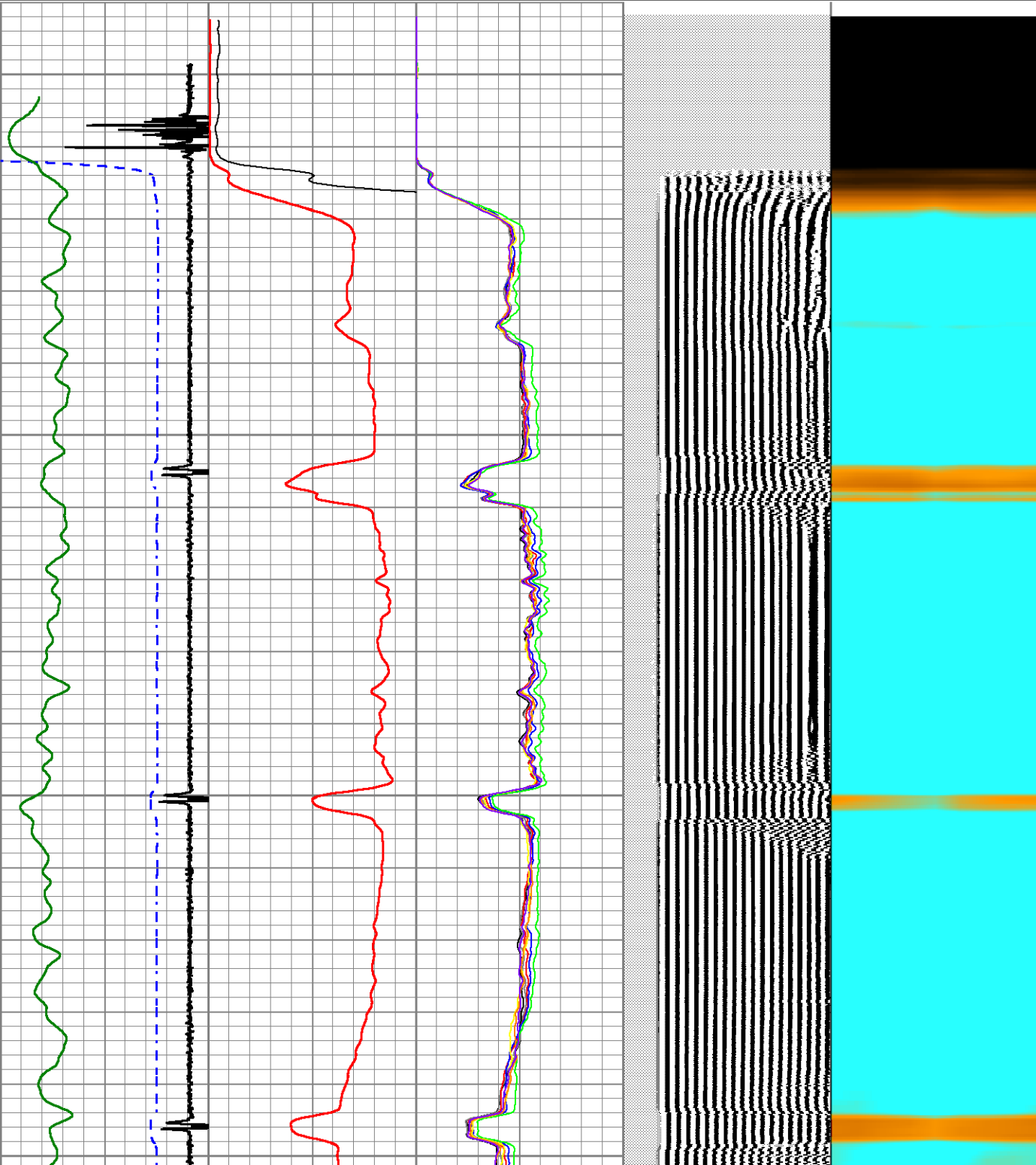
400	TT (usec)	200	0	AMP (mV)	100	0	AMPS1	150	200	VDL (usec)	1200	1	RADIAL MAP	8
10	CCL\$1	-1	0	AMPx5 (mV)	20	0	AMPS2	150						
0	GR (GAPI)	150				0	AMPS3	150						
						0	AMPS4	150						
						0	AMPS5	150						
						0	AMPS6	150						
						0	AMPS7	150						
						0	AMPS8	150						

0

50

100

150

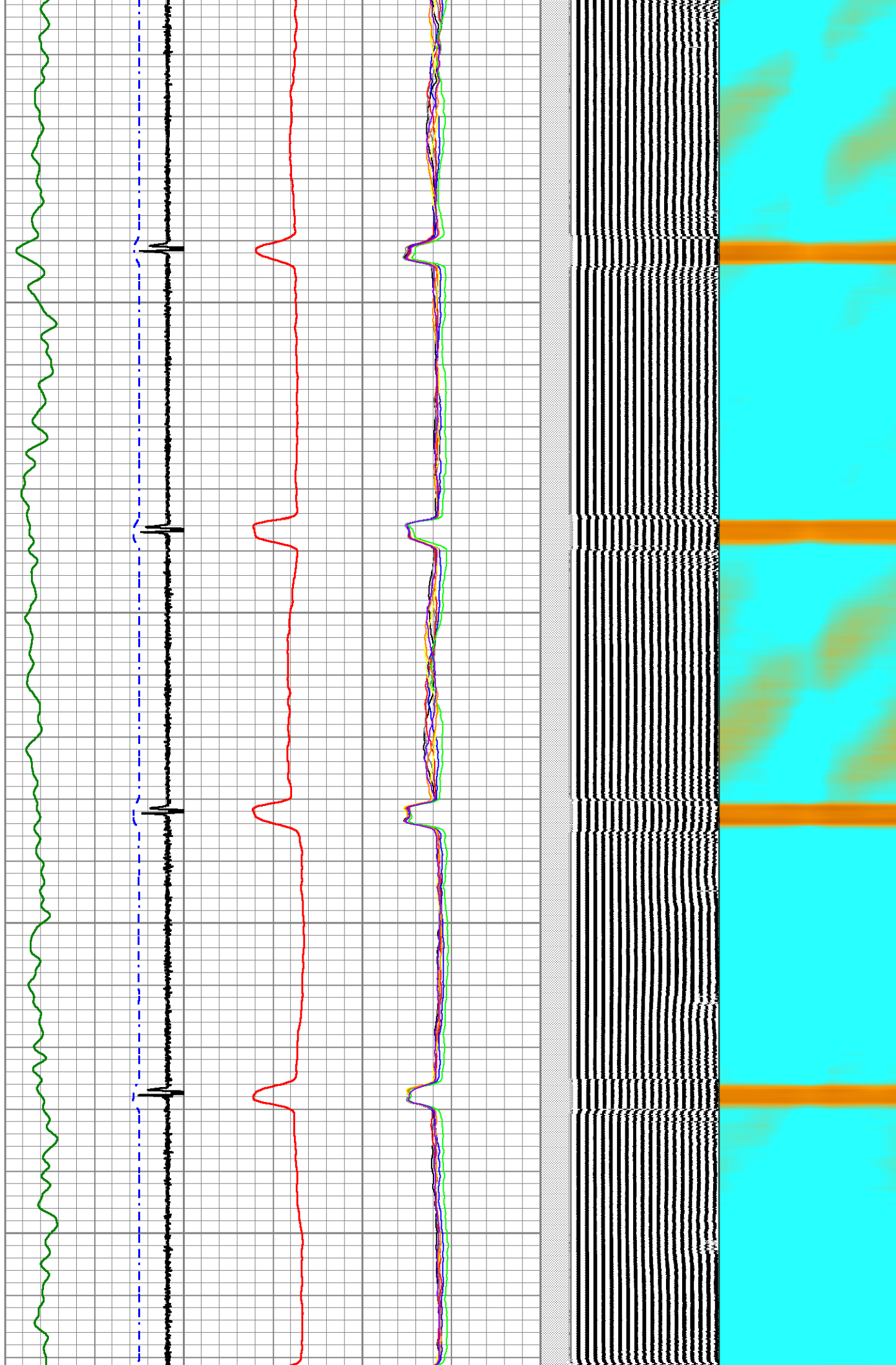


200

250

300

350

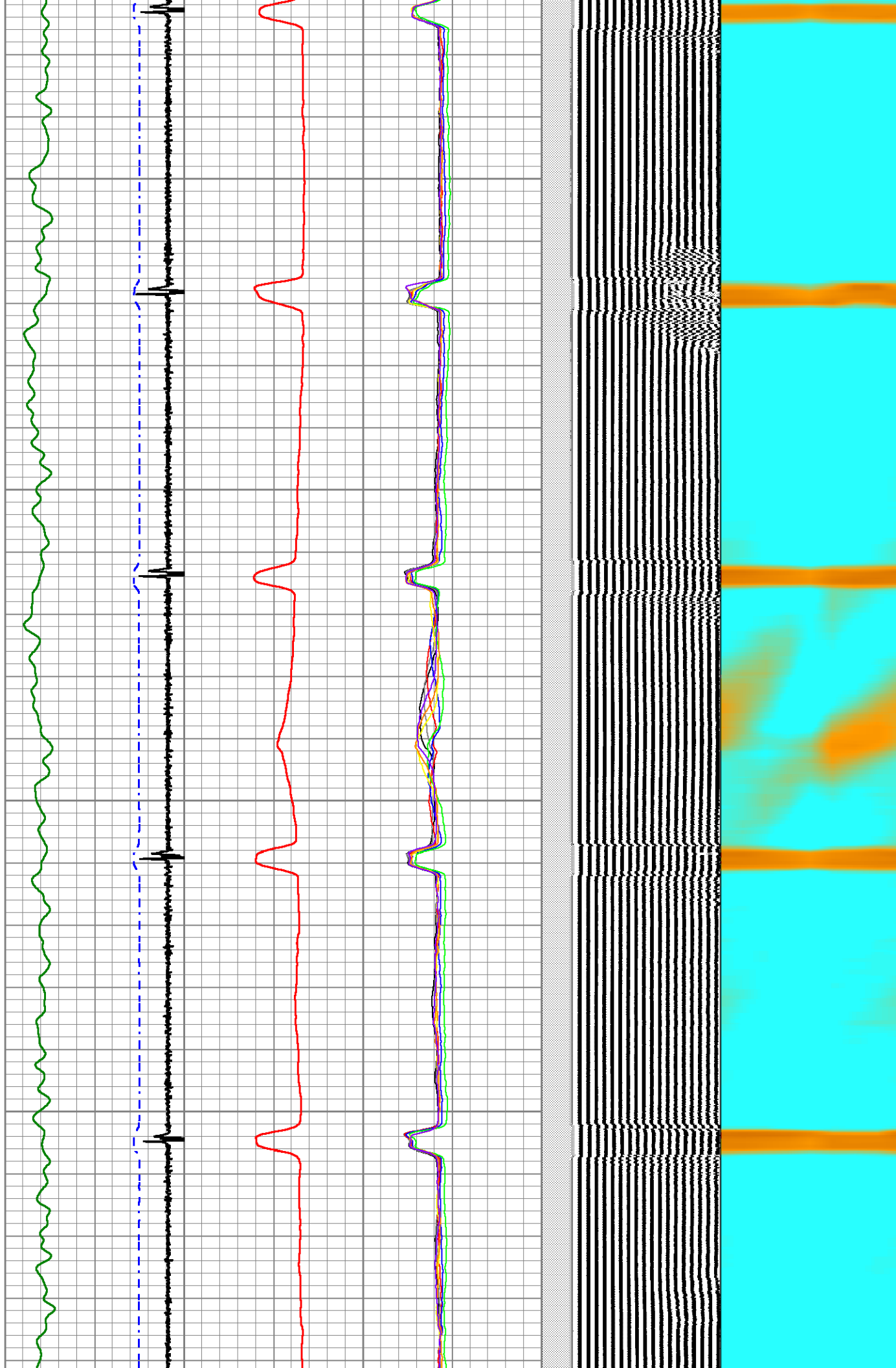


400

450

500

550



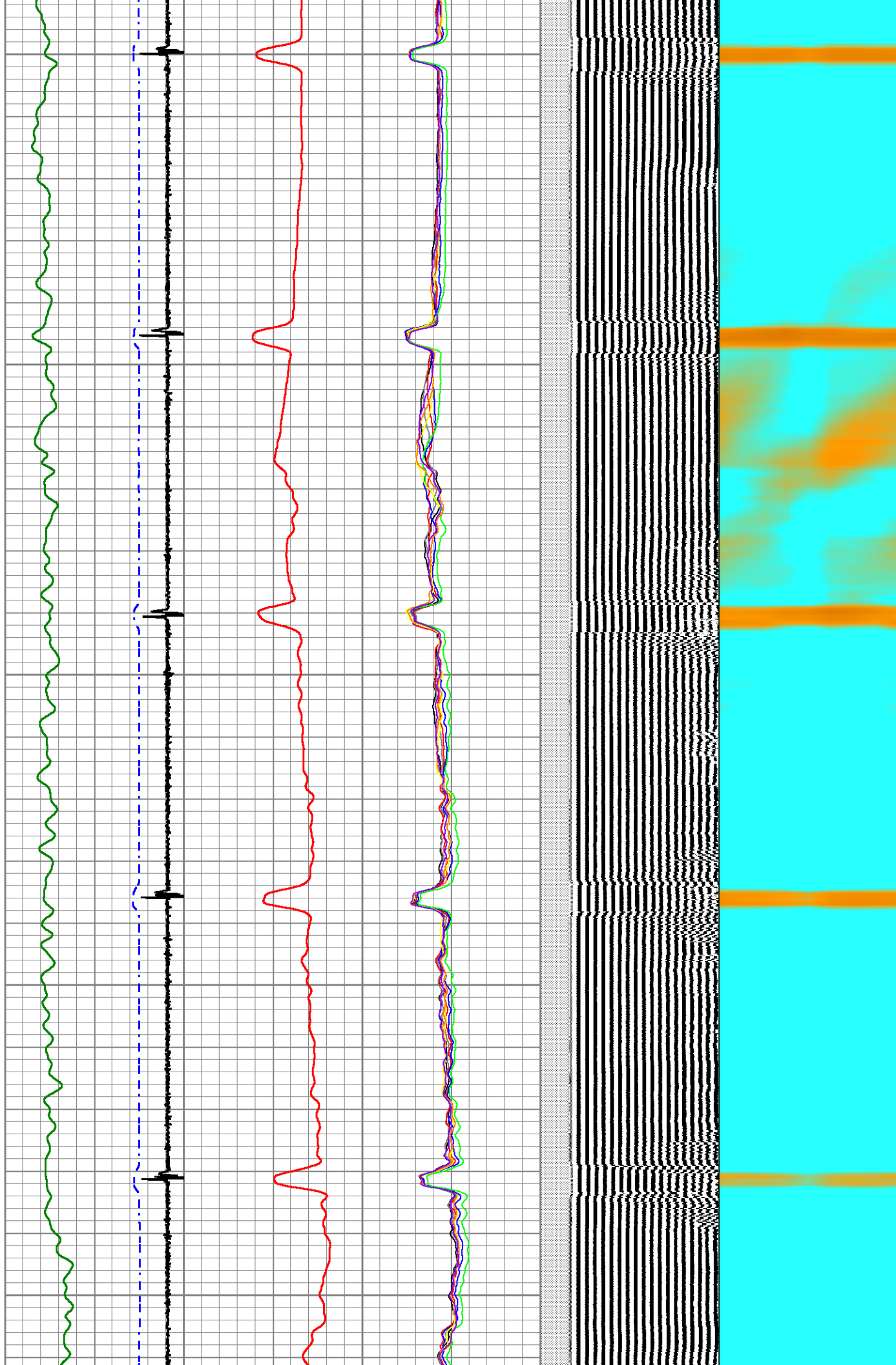
600

650

700

750

800

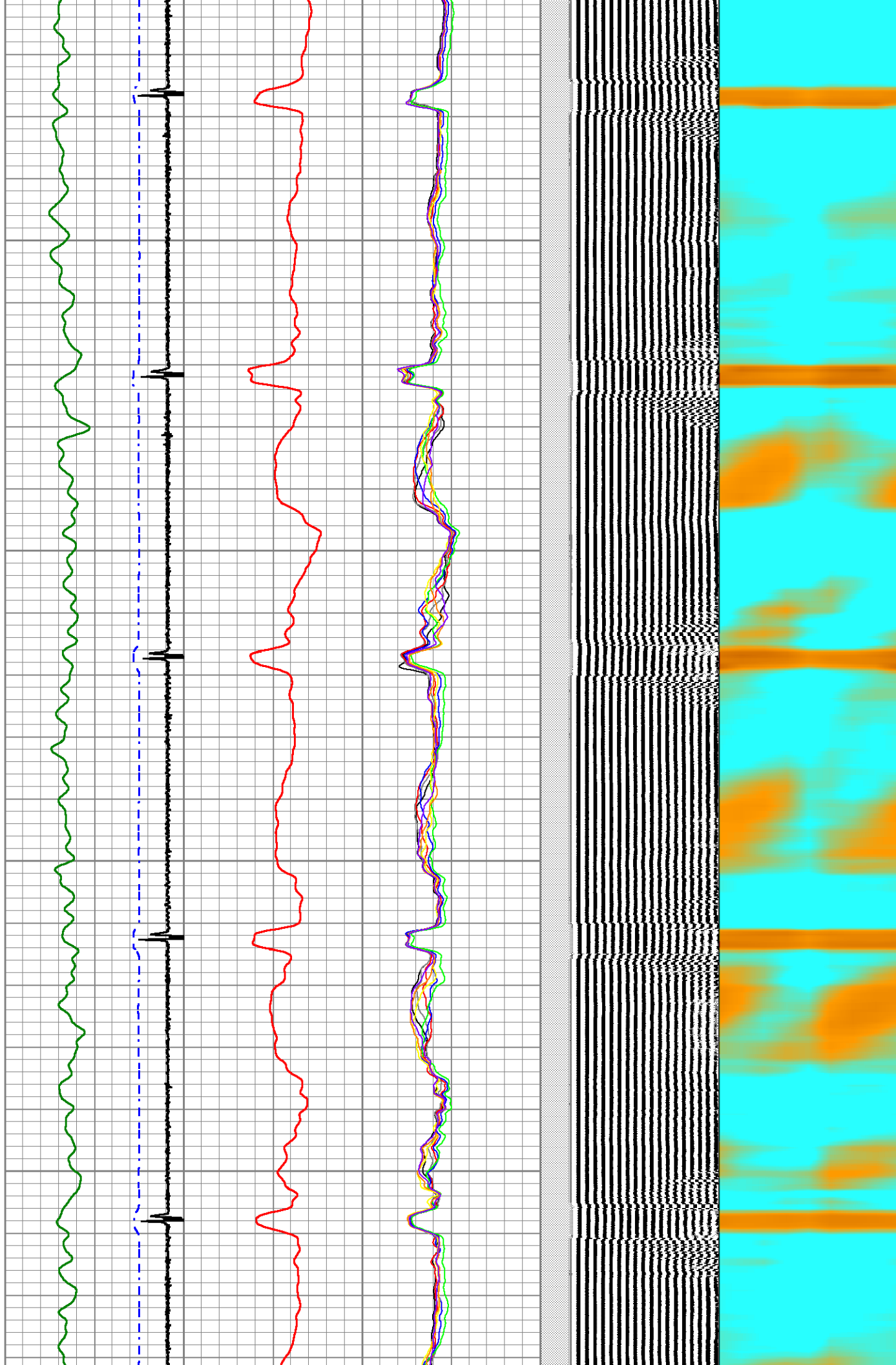


850

900

950

1000



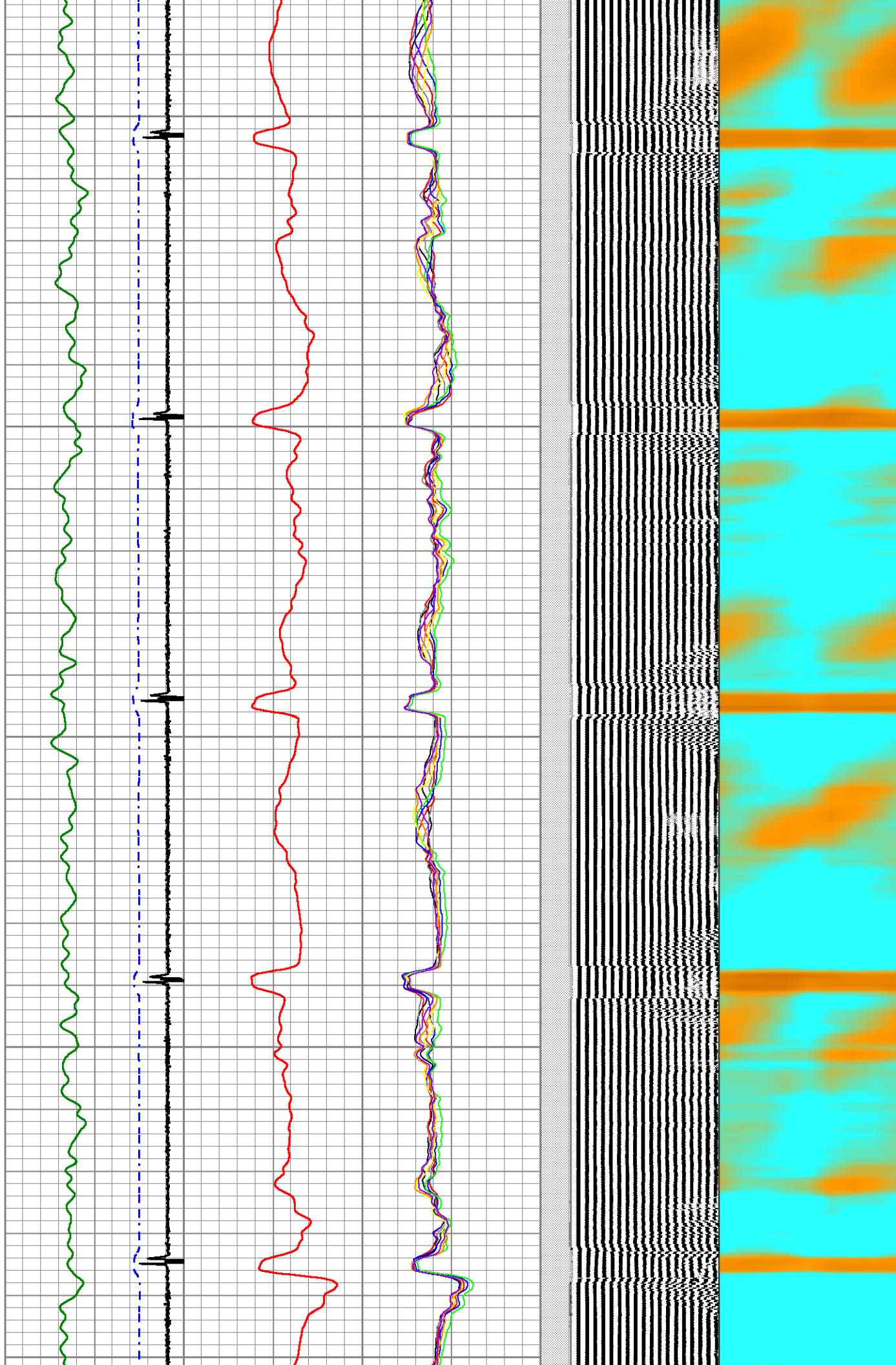
1050

1100

1150

1200

1250

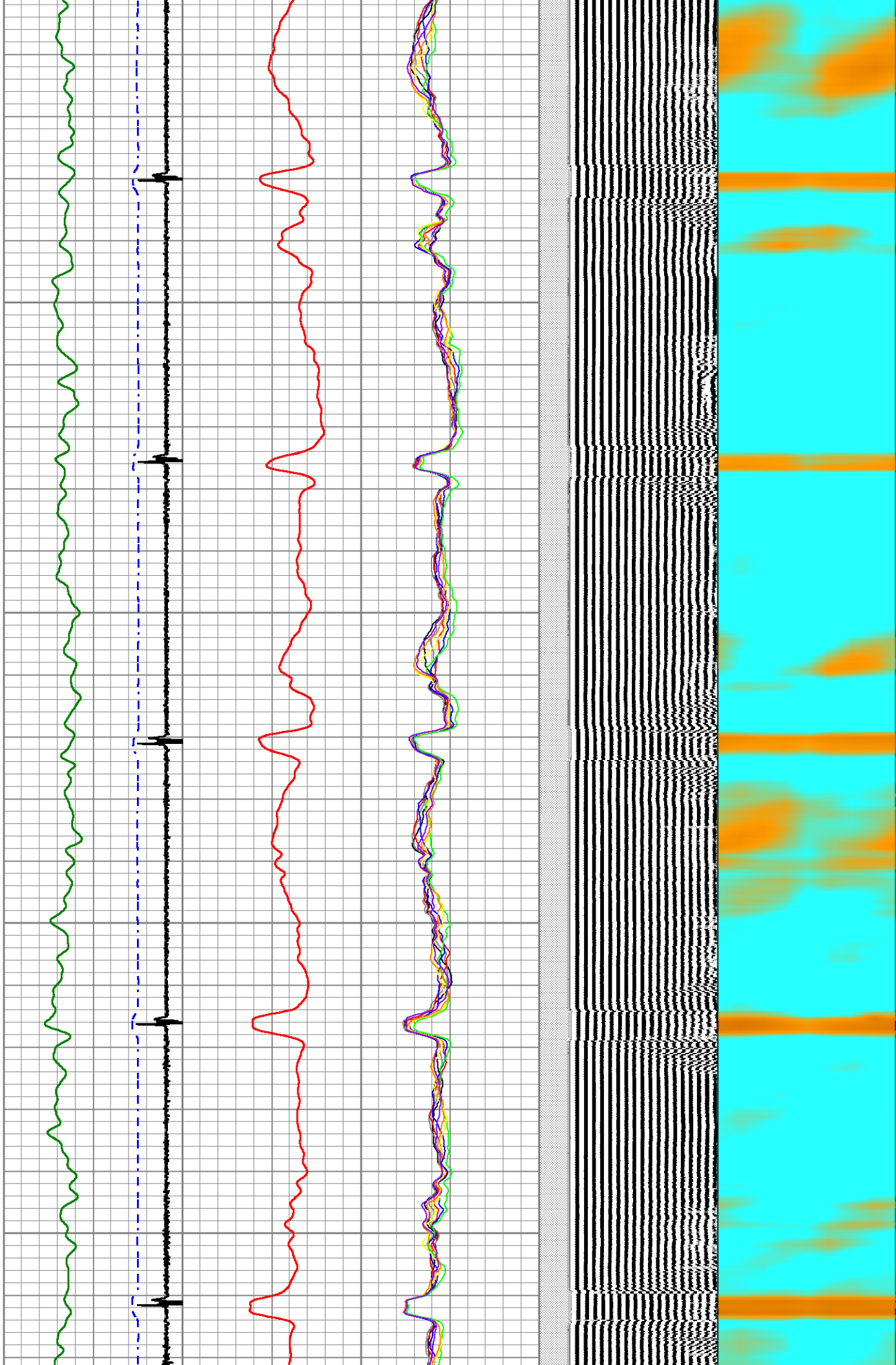


1300

1350

1400

1450

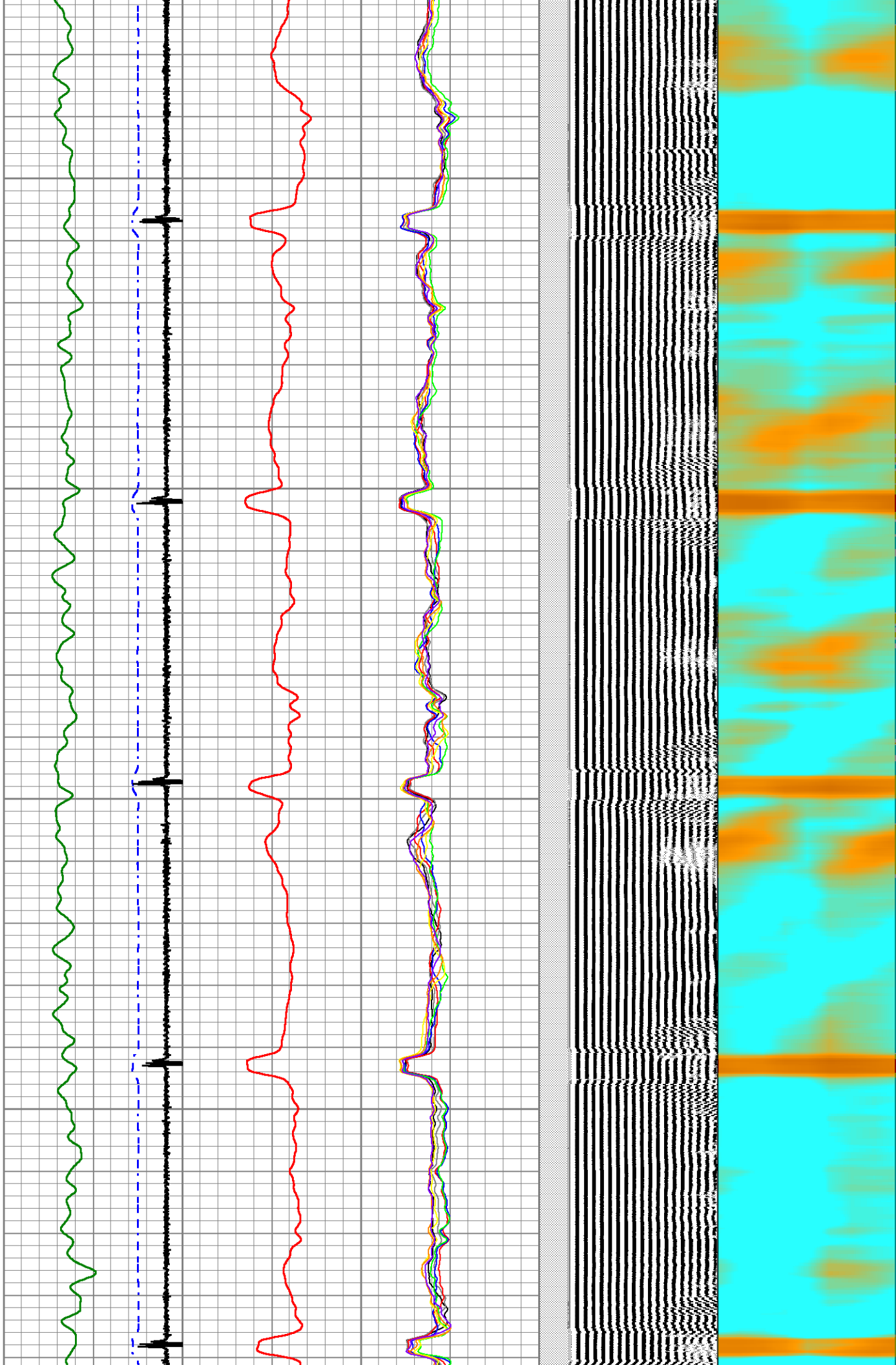


1500

1550

1600

1650



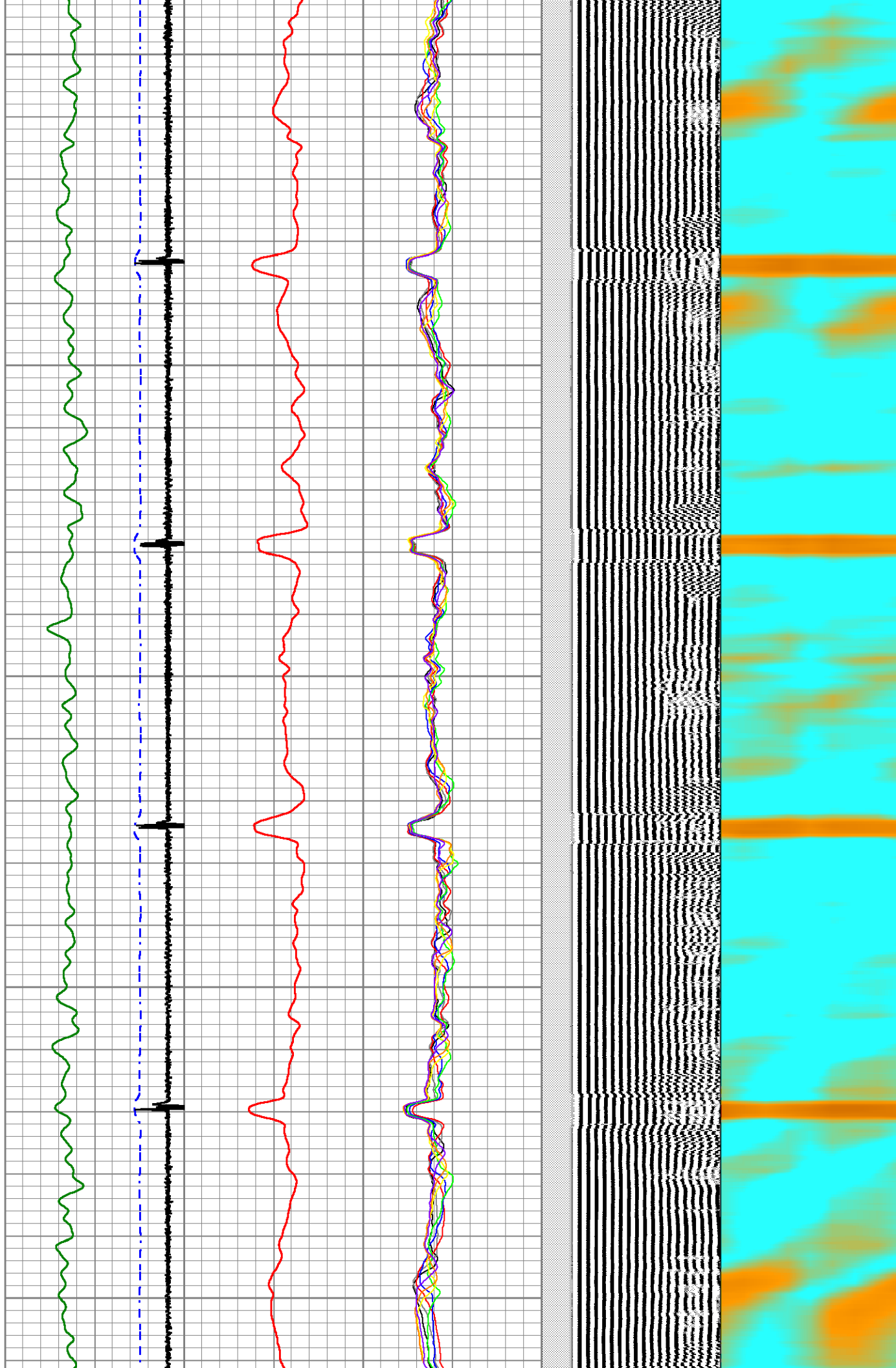
1700

1750

1800

1850

1900

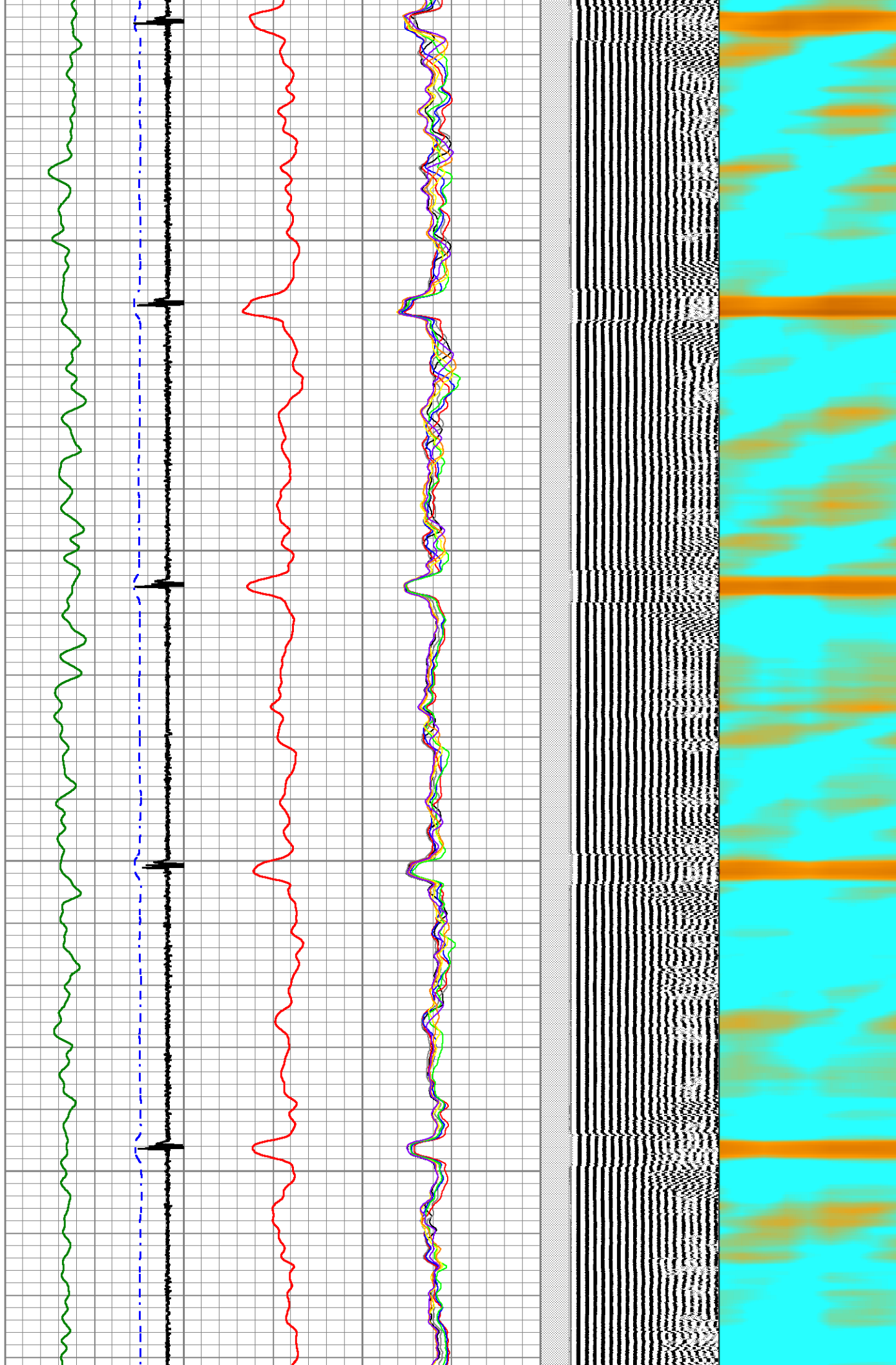


1950

2000

2050

2100



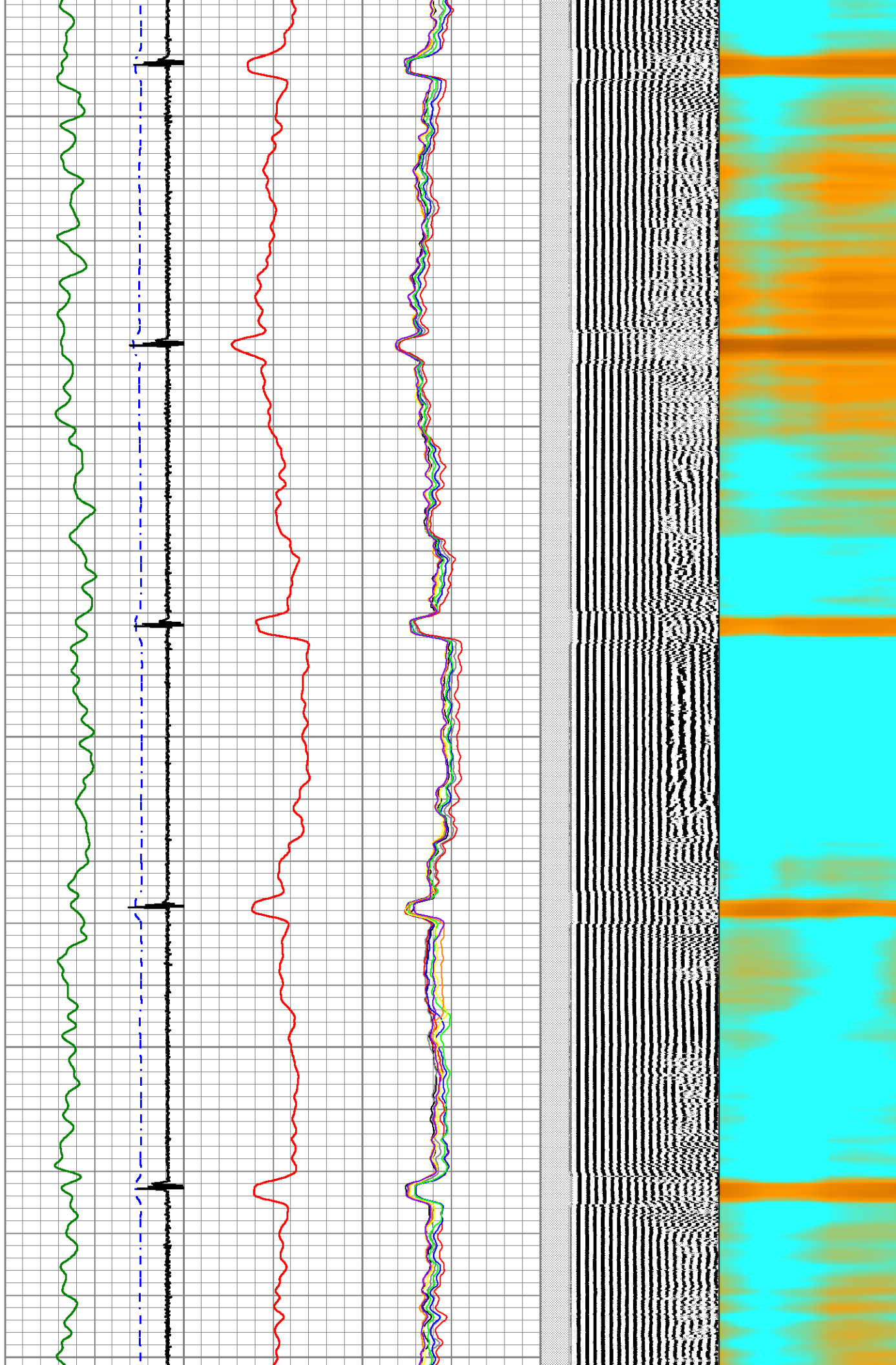
2150

2200

2250

2300

2350

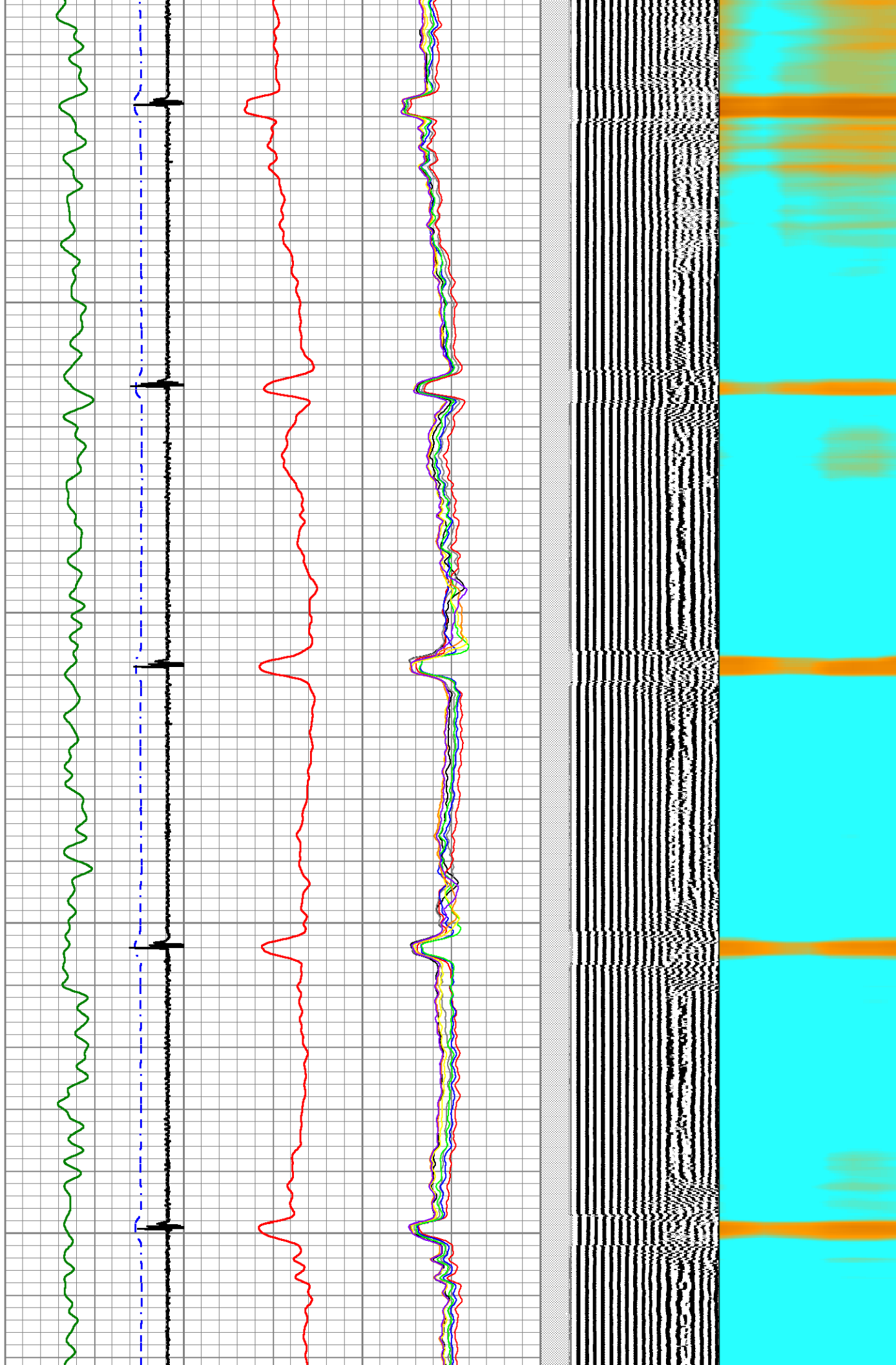


2400

2450

2500

2550

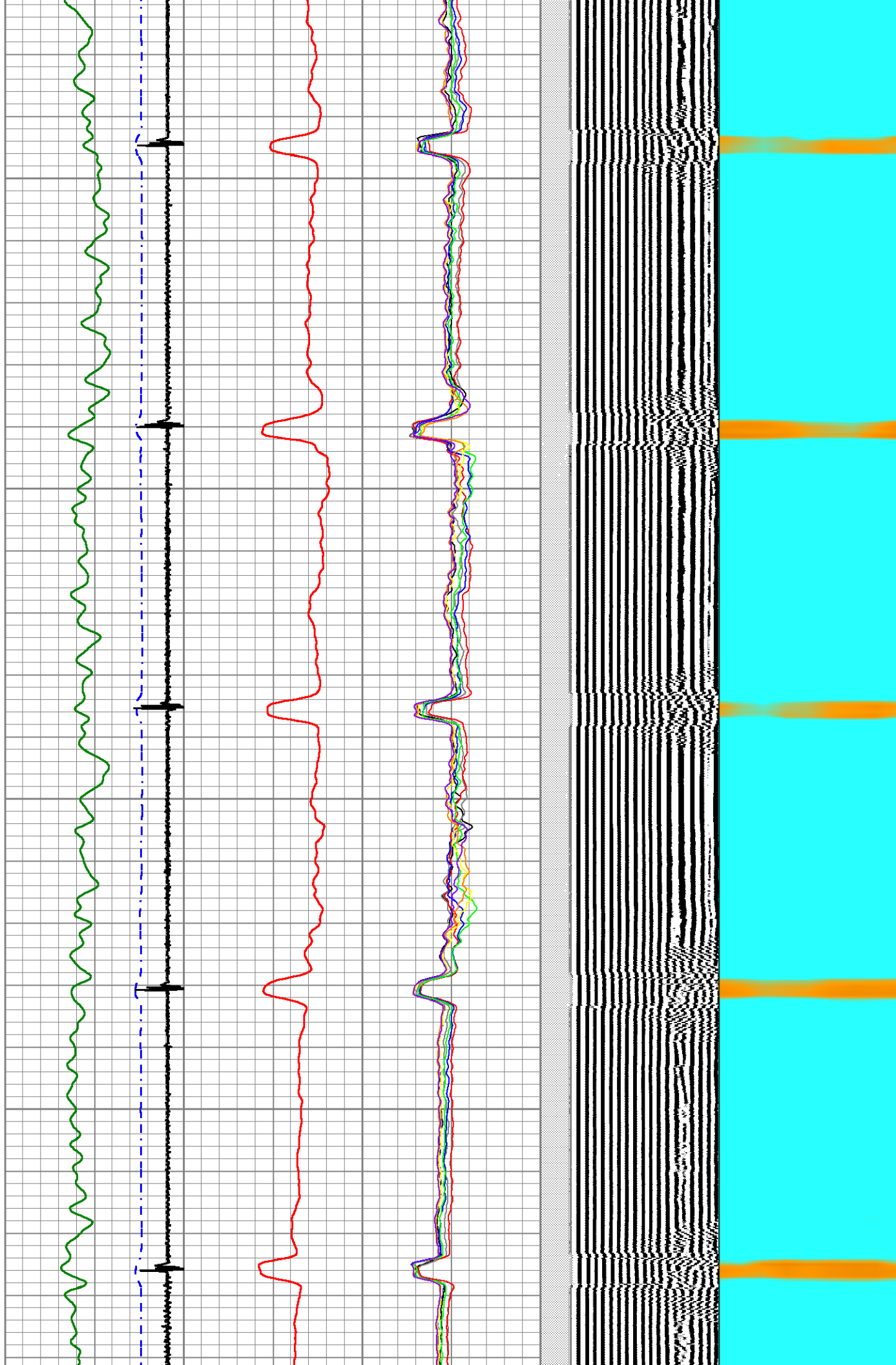


2600

2650

2700

2750



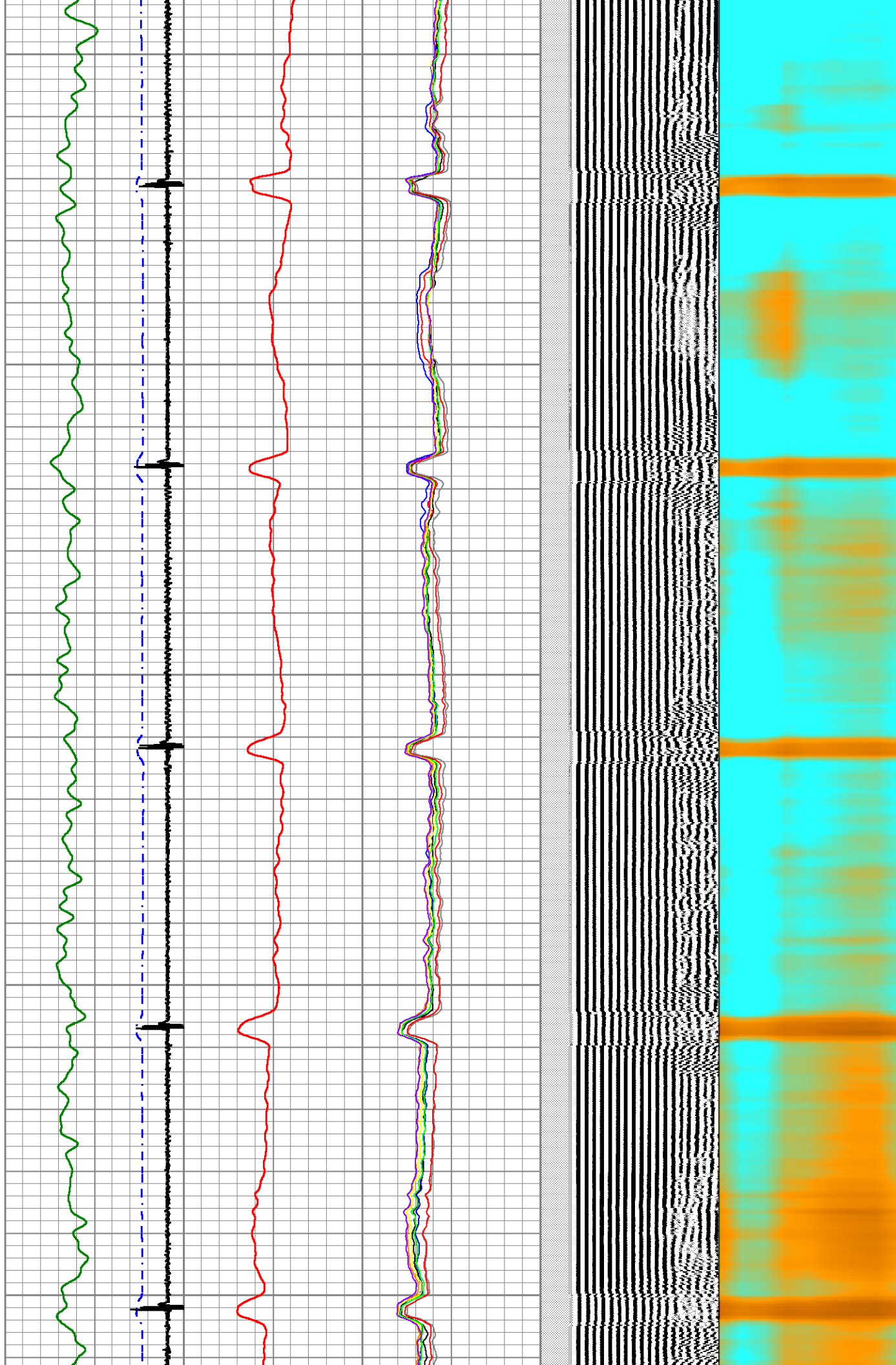
2800

2850

2900

2950

3000

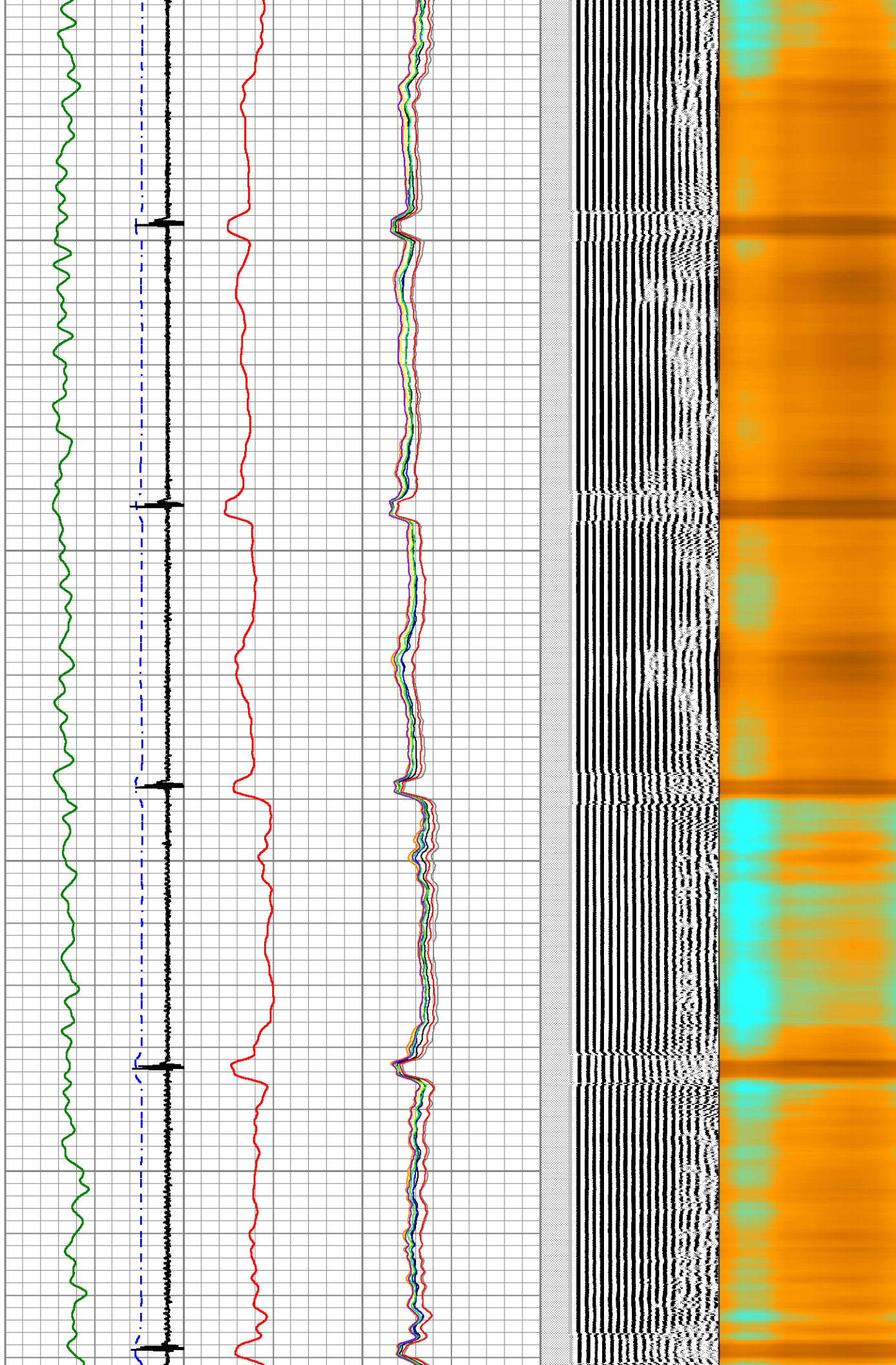


3050

3100

3150

3200



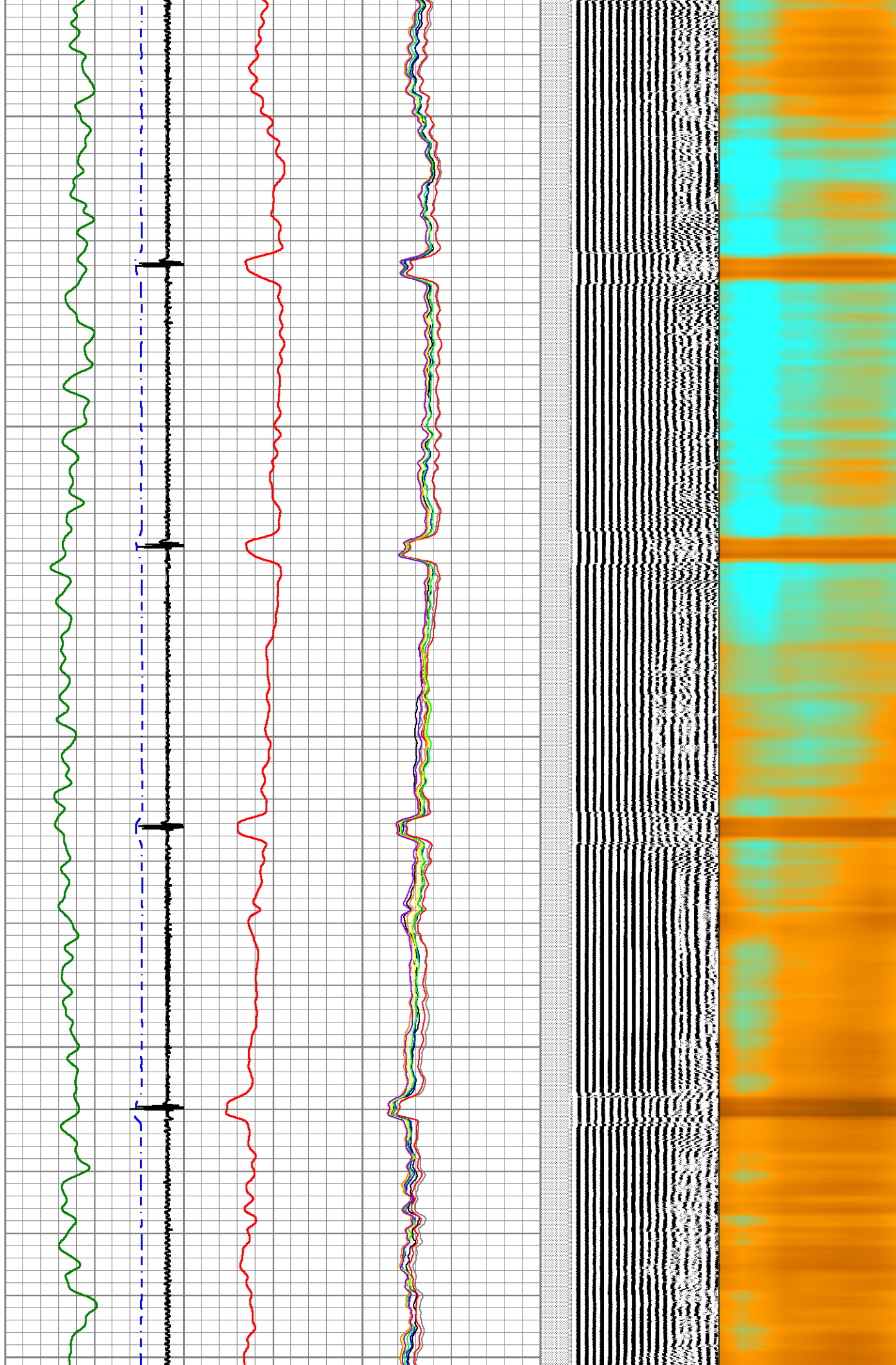
3250

3300

3350

3400

3450

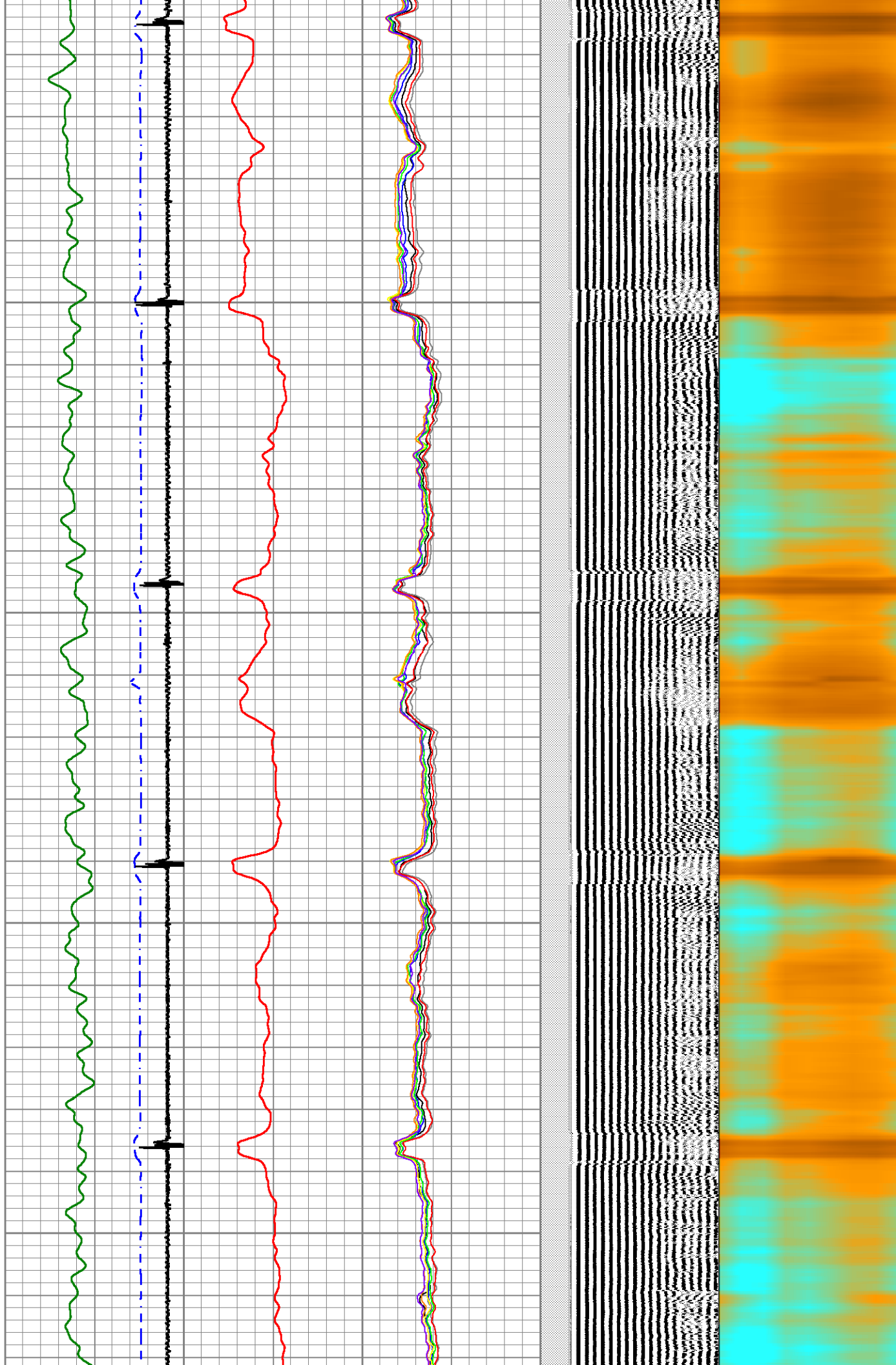


3500

3550

3600

3650

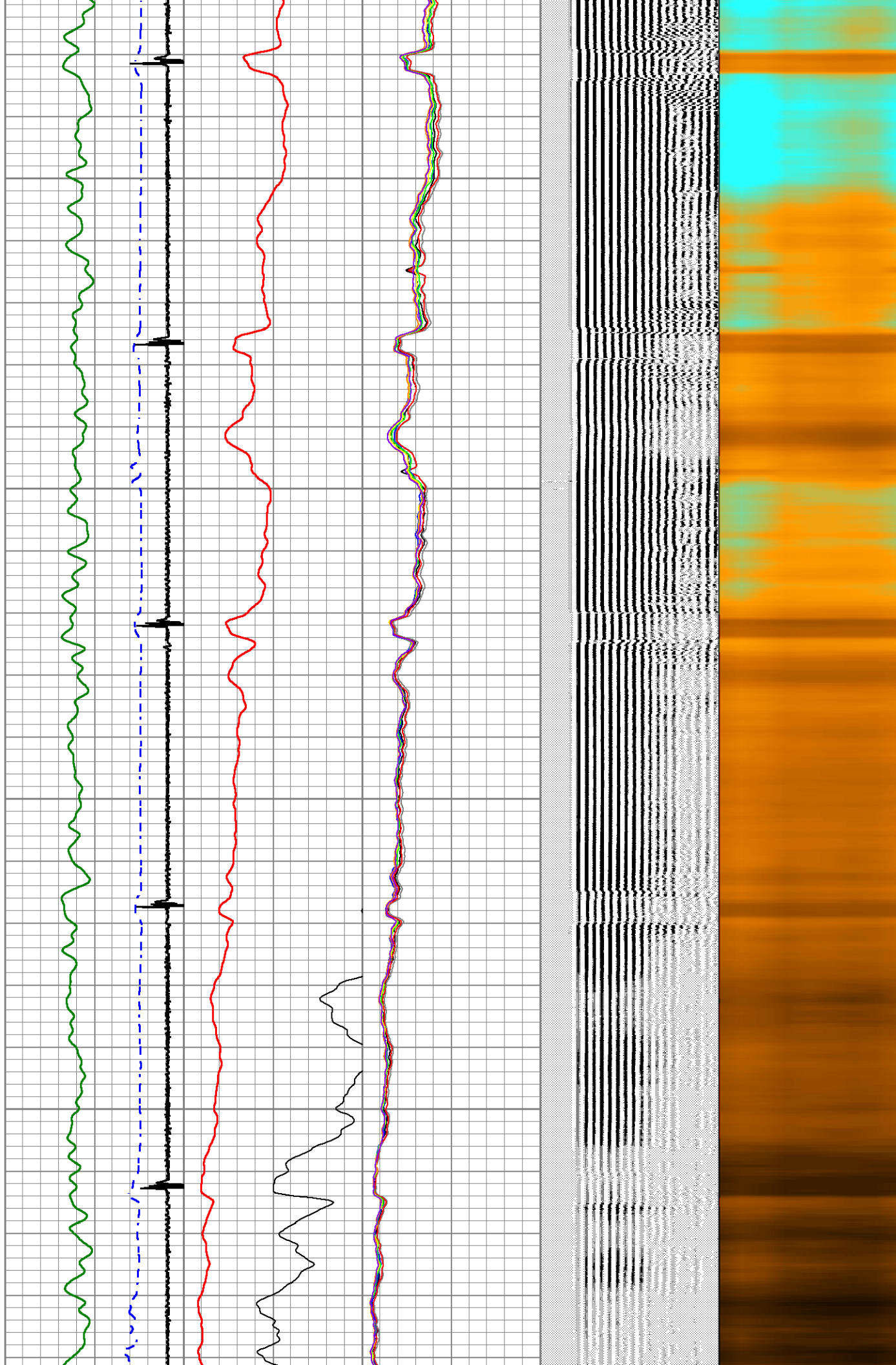


3700

3750

3800

3850

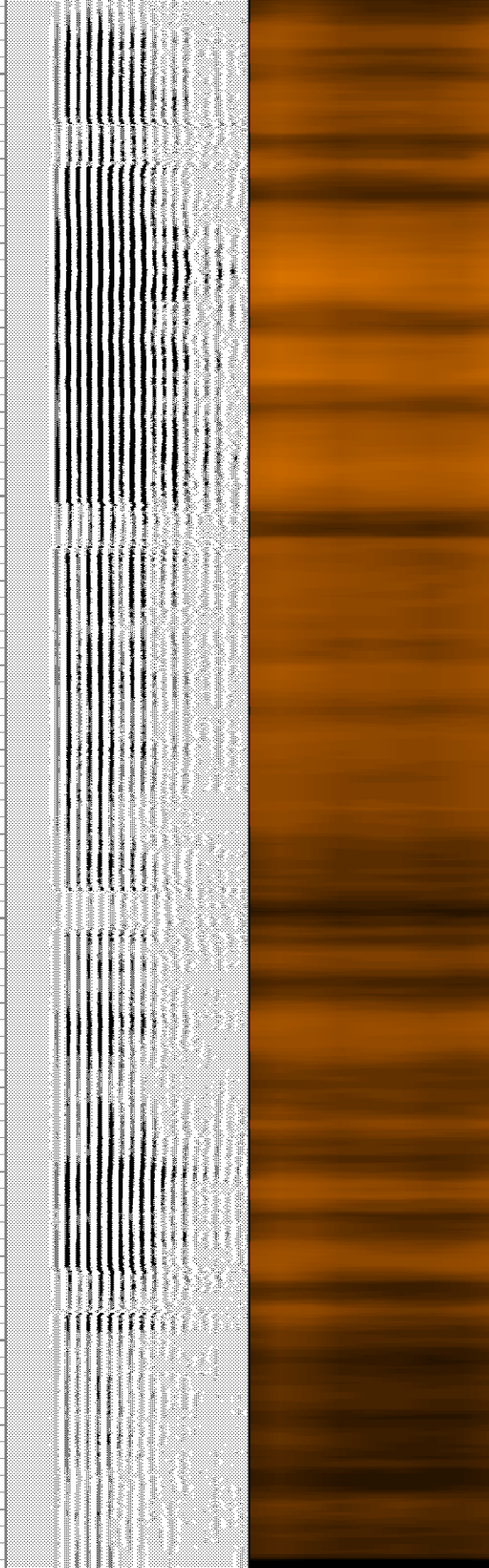
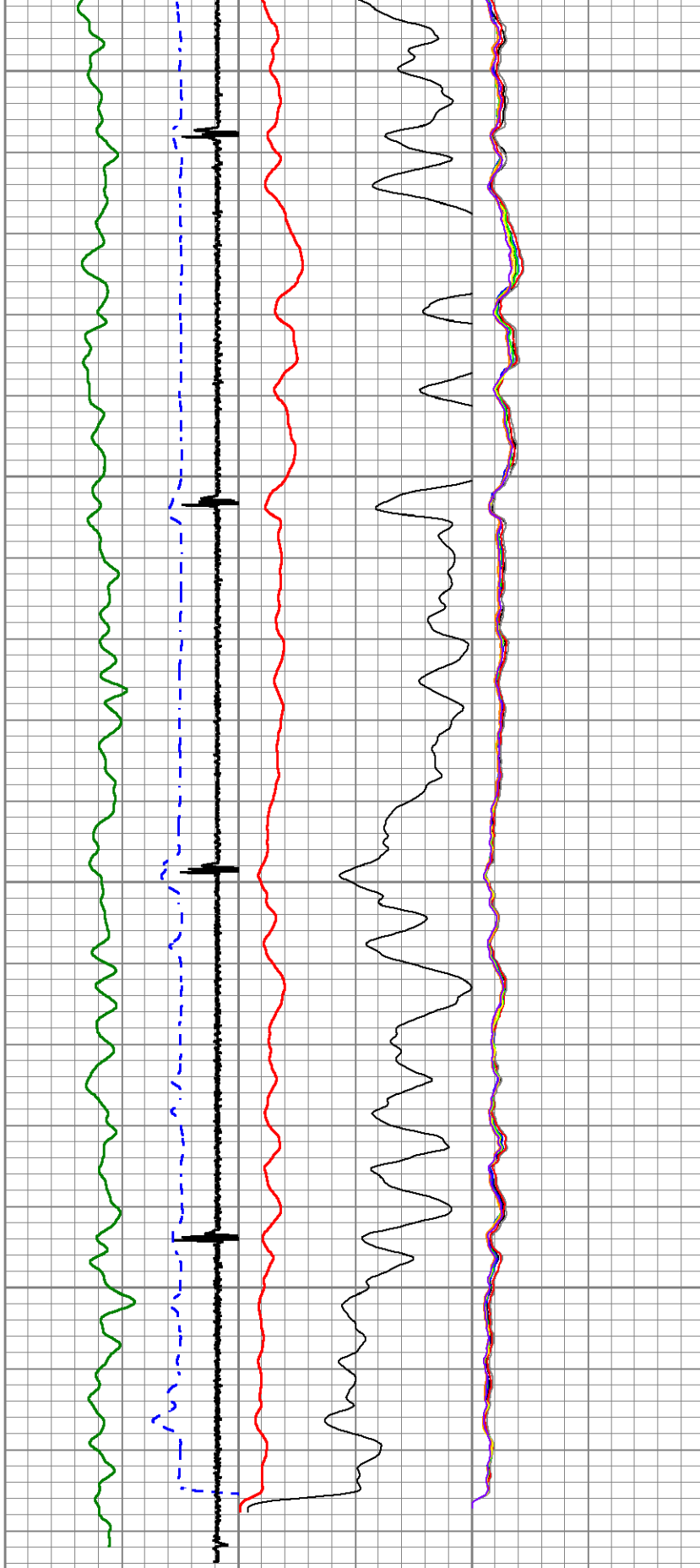


3900

3950

4000

4050



400	TT (usec)	200	0	AMP (mV)	100	0	AMPS1	150	200	VDL (usec)	1200	1	RADIAL MAP	8
10	CCL\$1	-1	0	AMPx5 (mV)	20	0	AMPS2	150						
0	GR (GAPI)	150				0	AMPS3	150						
						0	AMPS4	150						
						0	AMPS5	150						
						0	AMPS6	150						

0	AMPS6	150
0	AMPS7	150
0	AMPS8	150

Sensor	Offset (ft)	Schematic	Description	Length (ft)	O.D. (in)	Weight (lb)
ErrCt	19.69		CENT-BC275-0000 Probe 2.75" Bowspring Centralizer	2.83	2.75	24.00
WVFSYNC	12.27		RBT-Probe (FW1905-055) Probe Radii Bond Tool with Digital Telemetry	8.92	2.75	90.00
WVFS8	12.27					
WVFS7	12.27					
WVFS6	12.27					
WVFS5	12.27					
WVFS4	12.27					
WVFS3	12.27					
WVFS2	12.27					
WVFS1	12.27					
WVFCAL	12.27					
WVF3FT	12.27					
WVF5FT	11.19					
			CENT-BC275-0000 Probe 2.75" Bowspring Centralizer	2.83	2.75	24.00
GCT_HV	5.10					
CCL\$2	4.14					
CCL\$1	4.14					
GCT_Temp	3.59					
GR	2.72		GC-GCT275-0000 (FW1905-098) Probe Gamma Ray - CCL w/ Temp	4.77	2.75	55.00
			Plug-FA108-0000	0.33	1.38	1.00

				1.38" Bull Plug			
<div>Dataset: civitasaristocratangus 2-4-8.db: field/well/run2/pass5</div> <div>Total length: 19.69 ft</div> <div>Total weight: 194.00 lb</div> <div>O.D.: 2.75 in</div>							