



8000 W 44th Ave, Wheat Ridge, CO 80033 • Phone: 303-433-0479 • Fax: 303-325-5449 • www.eagle-enviro.com

March 29, 2023

Mr. Dan Peterson
Noble Energy, Inc.
2115 117th Avenue
Greeley, Colorado 80631

**Subsurface Assessment Summary
UPRC T4N-R67W-S23 Tank Battery
Historical Release
40.304673 / -104.867302
NE¼ NW¼ SEC.23 T4N R67W 6PM
Weld County, Colorado
Location ID 329775
Remediation # 22738**

Dear Mr. Peterson,

Eagle Environmental Consulting, LLC (EAGLE) is pleased to present this Subsurface Assessment Summary for the UPRC T4N-R67W-S23 Tank Battery (site).

1.0 BACKGROUND

On June 9, 2022, EAGLE collected soil samples at the UPRC T4N-R67W-S23 site following tank battery decommissioning activities. During the assessment, petroleum hydrocarbon staining and odor were not observed. Photoionization detector readings are summarized in Table 1. Based on soil analytical results, soil sample WV-FS-01@6' contained concentrations of Total Petroleum Hydrocarbons (TPH) and 1-methylnaphthalene exceeding their respective Colorado Oil and Gas Conservation Commission (COGCC) Table 915-1 regulatory limits. Historical soil analytical results are summarized in Table 2 and Table 3.

A Form 19 was submitted to the COGCC on June 27, 2022, and Spill/Release Point ID No. 482464 was subsequently issued for this event. Decommissioning activities and results of the initial investigation were reported in the Closure Assessment Summary submitted to COGCC on October 19, 2022.

2.0 LIMITED CONCEPTUAL SITE MODEL (CSM)

The following narrative provides a limited CSM for the overall site.

2.1 Site Background and Land Use

The former UPRC T4N-R67W-S23 site is located within the northeast quarter of the northwest quarter of Section 23, Township 4 North, Range 67 West, of the 6th Prime Meridian, in Weld County, Colorado. The historical release location identified during the initial assessment was located at latitude: 40.304673 and longitude: -104.867302. The site is located adjacent to crop to the east, south, and west, and pasture/ranch land to the north. A topographic site location map is presented in Figure 1. An aerial site location map is presented in Figure 2.



2.2 Site Specific and Regional Lithology/Hydrogeology

The soil lithology observed beneath the site consists of clayey sand from the ground surface to approximately 11 feet below ground surface (bgs) and silty sand from approximately 11 feet bgs to 20 feet bgs. Surface topography is generally undulated, with an overall dip to the northwest.

The nearest water well registered with the Colorado Division of Water Resources is Permit #93108, and is permitted for domestic purposes. Groundwater has not been observed during subsurface assessment activities, however, a bore was completed as a temporary 1-inch monitoring well to 20 feet bgs to confirm the absence of groundwater at the site. Soil boring logs / well completion diagrams are included in Attachment A.

2.3 Historical Release and Magnitude of Impacts

On May 26, 2023, EAGLE advanced five (5) soil borings (SB-01 through SB-05) at the site to delineate impacted media identified during the initial assessment and to determine the applicability of COGCC Table 915-1 Protection of Groundwater Soil Screening Levels (GSSLs) at the site. A reduced sampling analysis plan including Total Petroleum Hydrocarbons (TPH – C6-36) and Table 915-1 organics in soil was approved by a Supplemental Form 27 (Document No. 403202600).

2.3.1 Soil Impacts

Soil sample WV-FS-01@6', collected during the facility decommissioning assessment contained TPH exceeding the COGCC Table 915-1 regulatory limit, and 1-methylnaphthalene exceeding the COGCC Table 915-1 GSSL, only. Soil samples collected from SB-01 through SB-05 did not contain concentrations of TPH or COGCC Table 915-1 organics exceeding applicable regulatory limits. Soil boring soil analytical results are presented in Figure 3 and Figure 4, and summarized in Table 2 and Table 3. The laboratory analytical report is included in Attachment B.

Previously identified soil impacts have been vertically and laterally defined. COGCC Table 915-1 regulatory limits do not appear applicable, therefore, residual TPH remains at the site.



2.4 Remedial Strategy and Recommendations

Based on the information presented in this report, EAGLE recommends the following:

- Complete limited source excavation activities to remove historical impacts identified in WV-FS-01.

EAGLE sincerely appreciates the opportunity to provide our services. If you have any questions or require further information, please contact us at (303) 433-0479.

Sincerely,

EAGLE ENVIRONMENTAL CONSULTING, INC.



Grace Congdon
Project Geologist



Andrew Newberry
Senior Project Geologist

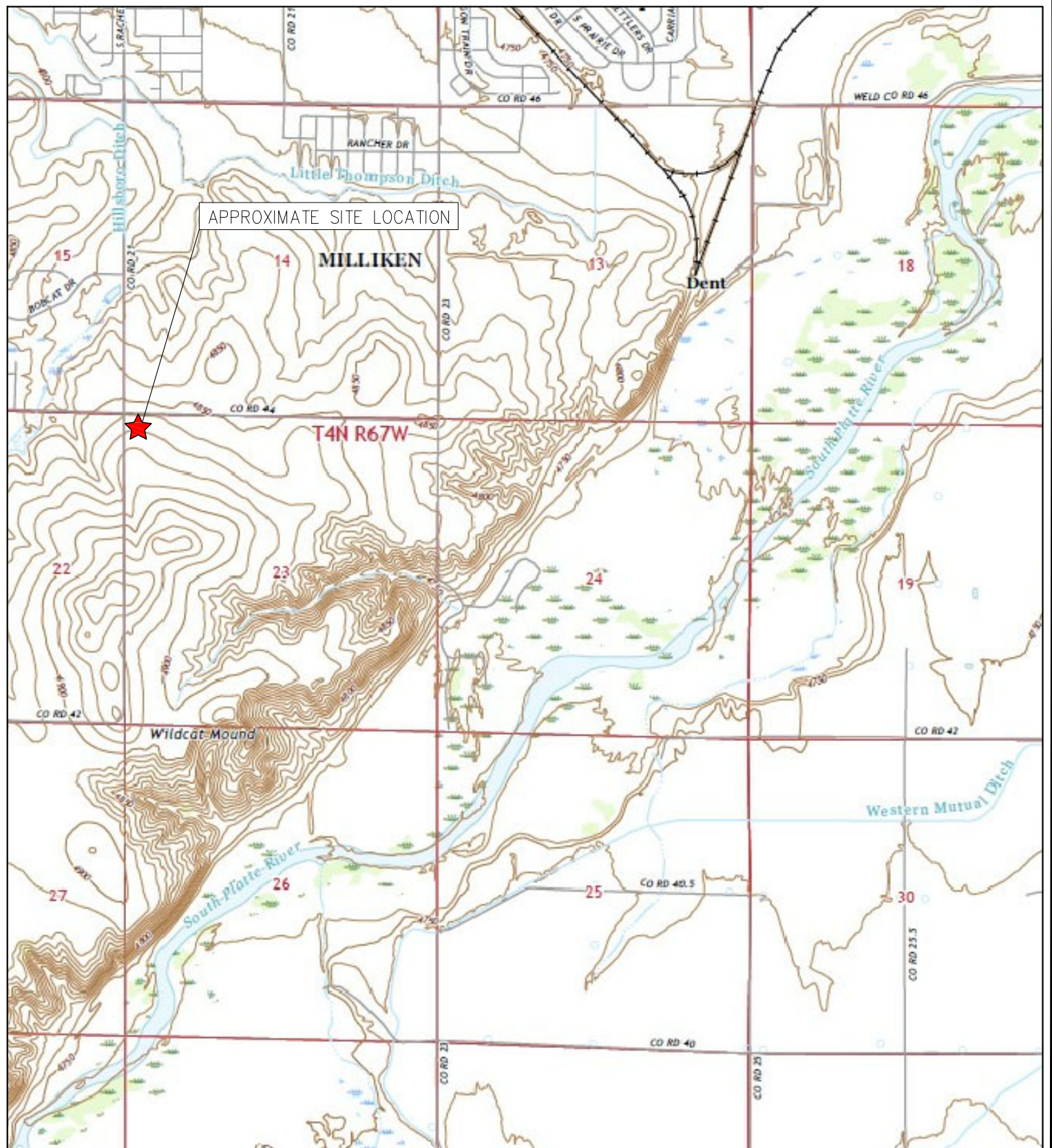
FIGURES

Figure 1: Topographic Site Location Map

Figure 2: Aerial Site Location Map

Figure 3: Soil Boring Soil Analytical Map

Figure 4: Soil Boring Polycyclic Aromatic Hydrocarbons in Soil Map



TOPOGRAPHIC SITE LOCATION MAP
 UPRC T4N-R67W-S23 TANK BATTERY
 HISTORICAL RELEASE
 40.304673 / -104.867302
 NE1/4 NW1/4 SEC.23 T4N R67W 6PM
 WELD COUNTY, COLORADO
 LOCATION ID 329775
 REMEDIATION # 22738

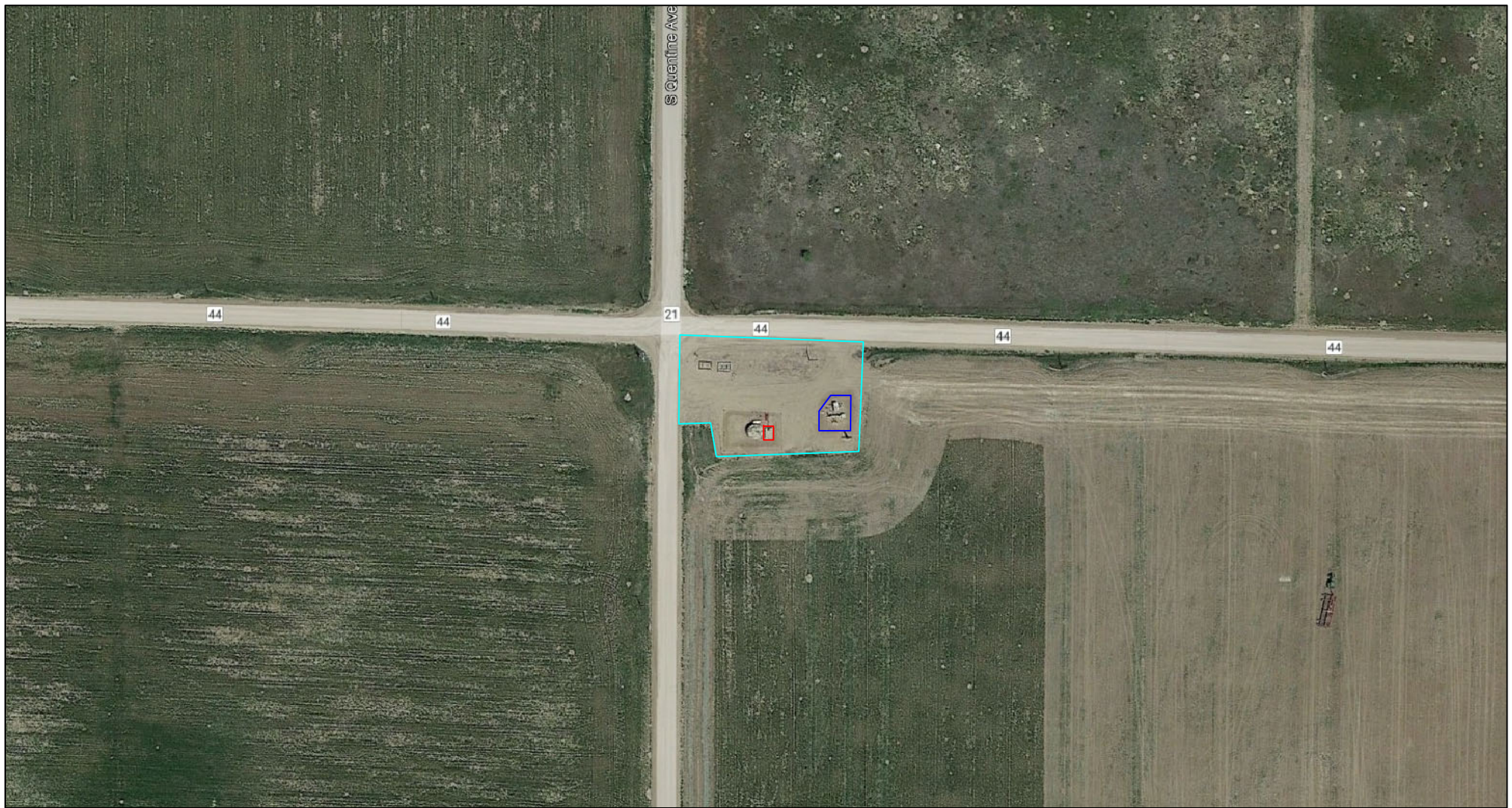


EAGLE
 ENVIRONMENTAL
 CONSULTING, LLC

8000 W 44th Ave, Wheat Ridge, CO 80033
 Ph: 303-433-0479 • F: 303-325-5449

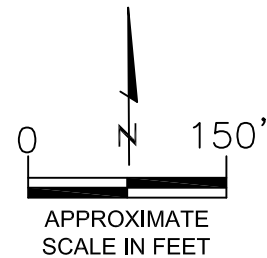
SOURCE: USGS 7.5 MINUTE TOPOGRAPHIC MAP
 MILLIKEN, CO QUADRANGLE 2022

FIGURE 1



LEGEND

- FORMER UPRC T4N-R67W-S23 TANK BATTERY (DECOMMISSIONED)
- APPROXIMATE WATER VAULT LOCATION (REMOVED)
- SEPARATOR CONTAINMENT AREA (DECOMMISSIONED)



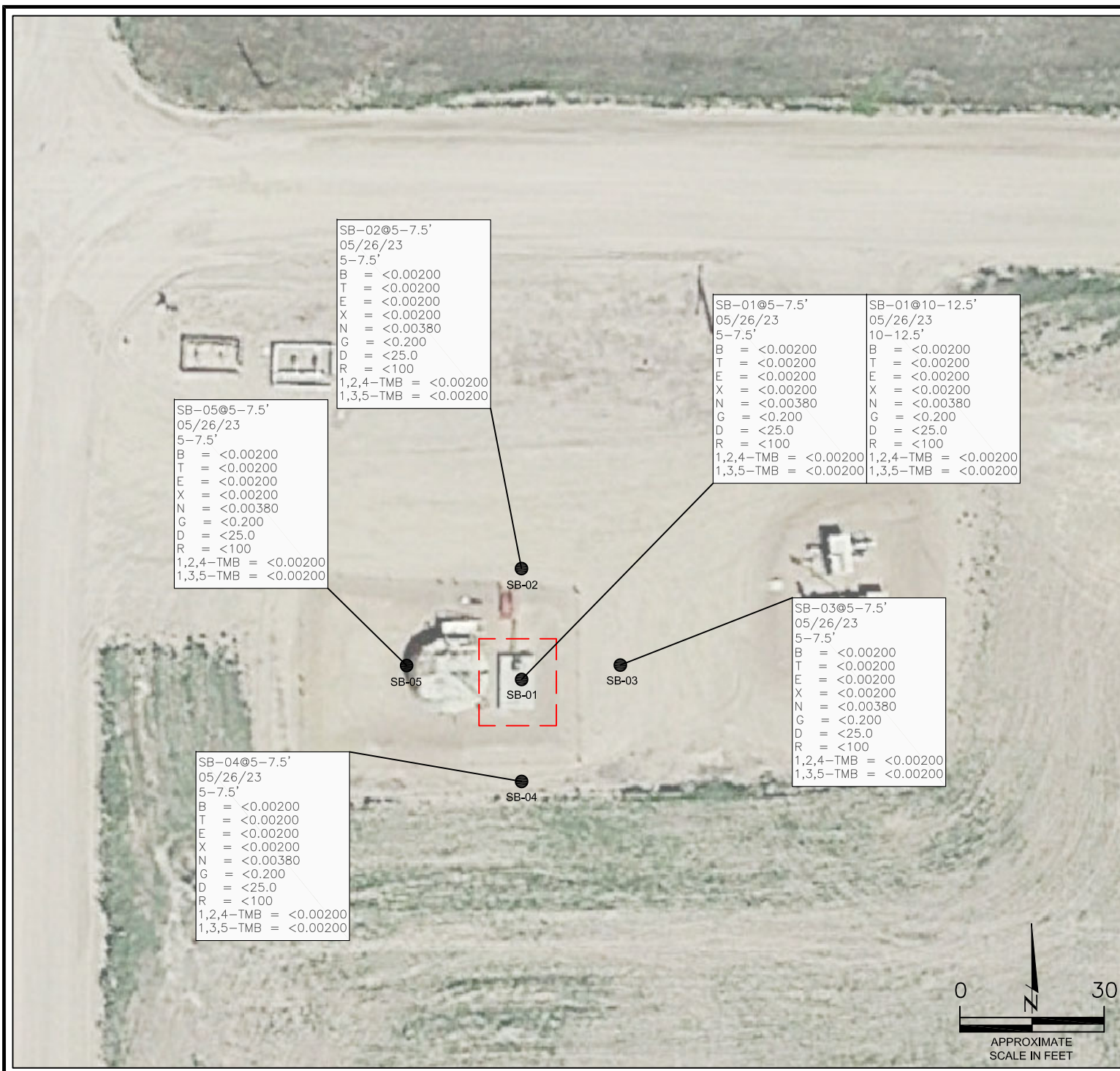
AERIAL SITE LOCATION MAP
 UPRC T4N-R67W-S23 TANK BATTERY
 HISTORICAL RELEASE
 40.304673 / -104.867302
 NE1/4 NW1/4 SEC.23 T4N R67W 6PM
 WELD COUNTY, COLORADO
 LOCATION ID 329775
 REMEDIATION # 22738

DRAWN BY:
 GEC

FIG. NO.
 2



EAGLE
 ENVIRONMENTAL
 CONSULTING, LLC
 8000 W 44th Ave, Wheat Ridge, CO 80033
 Ph: 303-433-0479 • F: 303-325-5449



LEGEND

- WATER VAULT ASSESSMENT BOUNDARIES
- APPROXIMATE LOCATION OF SOIL SAMPLES
SS-02 SUBMITTED FOR LABORATORY ANALYSIS

PARAMETERS

SAMPLE LOCATION
DATE
DEPTH (FEET)
B = BENZENE (mg/kg)
T = TOLUENE (mg/kg)
E = ETHYLBENZENE (mg/kg)
X = TOTAL XYLENES (mg/kg)
N = NAPHTHALENE (mg/kg)
G = TPH-GRO (mg/kg)
D = TPH-DRO (mg/kg)
R = TPH-RRO (mg/kg)
1,2,4-TMB = 1,2,4 TRIMETHYLBENZENE (mg/kg)
1,3,5-TMB = 1,3,5 TRIMETHYLBENZENE (mg/kg)

mg/kg = MILLIGRAMS PER KILOGRAM

TPH-GRO = TOTAL PETROLEUM HYDROCARBONS - GASOLINE RANGE ORGANICS
TPH-DRO = TOTAL PETROLEUM HYDROCARBONS - DIESEL RANGE ORGANICS
TPH-RRO = TOTAL PETROLEUM HYDROCARBONS - RESIDUAL RANGE ORGANICS

NOTES:

VALUES PRESENTED WITH A LESS THAN SYMBOL (<) DID NOT CONTAIN CONCENTRATIONS AT OR ABOVE LABORATORY DETECTION LIMITS.

VALUES PRESENTED IN **BOLD** EXCEED COGCC TABLE 915-1 REGULATORY LIMITS.

COGCC = COLORADO OIL AND GAS CONSERVATION COMMISSION

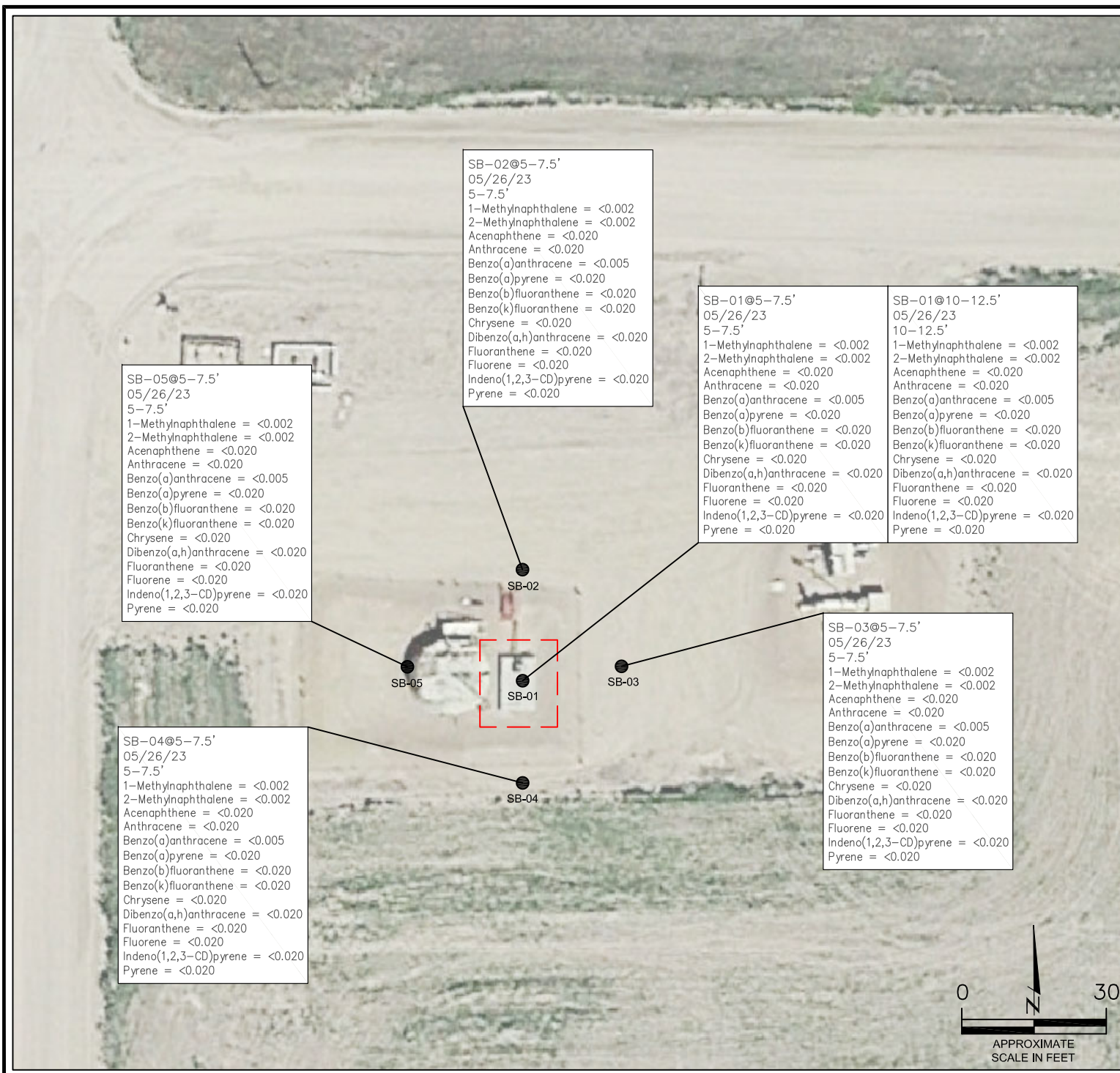
SOIL BORING SOIL ANALYTICAL MAP
UPRC T4N-R67W-S23 TANK BATTERY
HISTORICAL RELEASE
40.304673 / -104.867302
NE1/4 NW1/4 SEC.23 T4N R67W 6PM
WELD COUNTY, COLORADO
LOCATION ID 329775
REMEDATION # 22738

FIGURE NO.
3

DRAWN BY:
GEC



EAGLE
ENVIRONMENTAL
CONSULTING, LLC
8000 W 44th Ave, Wheat Ridge, CO 80033
Ph: 303-433-0479 • F: 303-325-5449



LEGEND

- WATER VAULT ASSESSMENT BOUNDARIES
- APPROXIMATE LOCATION OF SOIL SAMPLES
SS-02 SUBMITTED FOR LABORATORY ANALYSIS

PARAMETERS

SAMPLE LOCATION
DATE SAMPLE COLLECTED
APPROXIMATE DEPTH
POLYCYCLIC AROMATIC HYDROCARBONS (PAHs) (mg/kg)

mg/kg = MILLIGRAMS PER KILOGRAM

NOTES:

VALUES PRESENTED WITH A LESS THAN SYMBOL (<) DID NOT CONTAIN CONCENTRATIONS AT OR ABOVE LABORATORY DETECTION LIMITS.

VALUES PRESENTED IN **BOLD** EXCEED COGCC TABLE 915-1 REGULATORY LIMITS.

COGCC = COLORADO OIL AND GAS CONSERVATION COMMISSION

SOIL BORING POLYCYCLIC AROMATIC HYDROCARBONS MAP

UPRC T4N-R67W-S23 TANK BATTERY
HISTORICAL RELEASE
40.304673 / -104.867302
NE1/4 NW1/4 SEC.23 T4N R67W 6PM
WELD COUNTY, COLORADO
LOCATION ID 329775
REMEDATION # 22738

FIGURE NO.

4

DRAWN BY:
GEC



EAGLE
ENVIRONMENTAL
CONSULTING, LLC
8000 W 44th Ave, Wheat Ridge, CO 80033
Ph: 303-433-0479 • F: 303-325-5449

TABLES

Table 1: Photoionization Detector Reading Summary

Table 2: Soil Analytical Results Summary

Table 3: Polycyclic Aromatic Hydrocarbons Analytical Results Summary

Table 4: Metals Analytical Results Summary

TABLE 1
PHOTOIONIZATION DETECTOR READING SUMMARY
UPRC T4N-R67W-S23 TANK BATTERY
HISTORICAL RELEASE
40.304673 / -104.867302
NE1/4 NW1/4 SEC.23 T4N R67W 6PM
WELD COUNTY, COLORADO
LOCATION ID 329775
REMEDATION # 22738

Sample Location (Latitude/Longitude)	Date	Approximate Depth (feet)	PID Reading (ppm-v)	Lab Submission (Y/N)
WV-SS-01 @ 5' (40.304699 / -104.867302)	06/09/22	5	1.8	N
WV-SS-02 @ 5' (40.304674 / -104.867270)	06/09/22	5	2.2	N
WV-SS-03 @ 5' (40.304649 / -104.867302)	06/09/22	5	2.4	Y
WV-SS-04 @ 5' (40.304677 / -104.867328)	06/09/22	5	1.1	N
WV-FS-01 @ 6' (40.304676 / -104.867301)	06/09/22	6	1.4	Y
TB-SS-01 @ 1' (40.304680 / -104.867349)	06/09/22	1	1.5	Y
TB-SS-02 @ 3' (40.304720 / -104.867080)	06/09/22	3	2.4	Y
TB-SS-03 @ 3' (40.304721 / -104.867033)	06/09/22	3	2.0	N
TB-SS-04 @ 1' (40.304752 / -104.867039)	06/09/22	1	1.9	N
TB-SS-05 @ 0.5' (40.304663 / -104.867018)	06/09/22	0.5	1.8	N
Background-01 @ 4' (40.304883 / -104.866929)	06/09/22	4	1.6	Y
SB-01 @ 5-7.5 (40.304669 / -104.867301)	05/26/23	5-7.5	5.2	Y
SB-01 @ 10-12.5' (40.304669 / -104.867301)	05/26/23	10-12.5	7.2	Y
SB-02 @ 5-7.5 (40.304727 / -104.867299)	05/26/23	5-7.5	3.5	Y
SB-02 @ 7.5-10' (40.304727 / -104.867299)	05/26/23	7.5-10	2.6	N
SB-03 @ 5-7.5 (40.304672 / -104.867249)	05/26/23	5-7.5	3.1	Y
SB-03 @ 7.5-10' (40.304672 / -104.867249)	05/26/23	7.5-10	1.3	N
SB-04 @ 5-7.5 (40.304609 / -104.867307)	05/26/23	5-7.5	3.8	Y
SB-04 @ 7.5-10' (40.304609 / -104.867307)	05/26/23	7.5-10	1.8	N
SB-05 @ 5-7.5 (40.304676 / -104.867384)	05/26/23	5-7.5	5.8	Y
SB-05 @ 7.5-10' (40.304676 / -104.867384)	05/26/23	7.5-10	3.7	N
(Y/N) = Yes or No ppm-v = parts per million by volume PID = Photoionization Detector				

TABLE 2
SOIL ANALYTICAL RESULTS SUMMARY
UPRC T4N-R67W-S23 TANK BATTERY
HISTORICAL RELEASE
40.304673 / -104.867302
NE1/4 NW1/4 SEC.23 T4N R67W 6PM
WELD COUNTY, COLORADO
LOCATION ID 329775
REMEDATION # 22738

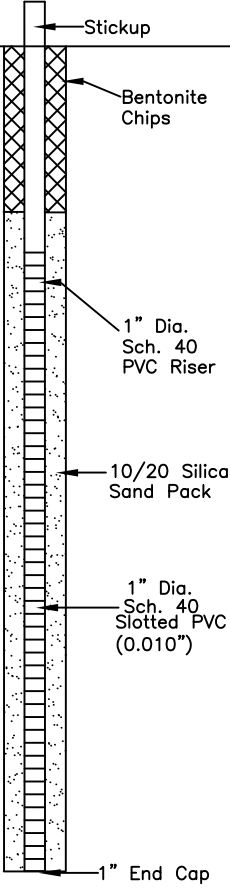
Sample Location (Latitude/Longitude)	Date	Approximate Depth (feet)	PID Reading (ppm-v)	Benzene (mg/kg)	Toluene (mg/kg)	Ethylbenzene (mg/kg)	Total Xylenes (mg/kg)	TPH-GRO (mg/kg)	TPH-DRO (mg/kg)	TPH-RRO (mg/kg)	1,2,4-TMB (mg/kg)	1,3,5-TMB (mg/kg)	Boron (mg/L)	Specific Conductance (mmhos/cm)	pH (pH units)	SAR
COGCC Table 915-1 Residential Screening Levels (mg/kg)				1.20	490	5.8	58	500			30	27	2	<4	6-8.3	<6
COGCC Table 915-1 Protection of Groundwater Soil Screening Levels				0.0026	0.69	0.78	9.9	--			0.0081	0.0087	--	--	--	--
WV-SS-03 @ 5' (40.304649 / -104.867302)	06/09/22	5	2.4	<0.00200	<0.00200	<0.00200	<0.00200	<0.200	<25.0	<100	<0.00200	<0.00200	0.139	0.202	8.41	0.113
WV-FS-01 @ 6' (40.304676 / -104.867301)	06/09/22	6	1.4	<0.00200	<0.00200	<0.00200	<0.00200	0.725	339	165	<0.00200	<0.00200	0.199	0.293	8.35	0.448
TB-SS-01 @ 1' (40.304680 / -104.867349)	06/09/22	1	1.5	<0.00200	<0.00200	<0.00200	<0.00200	<0.200	<25.0	<100	<0.00200	<0.00200	0.119	0.261	8.12	0.0728
TB-SS-02 @ 3' (40.304720 / -104.867080)	06/09/22	3	2.4	<0.00200	<0.00200	<0.00200	<0.00200	<0.200	<25.0	<100	<0.00200	<0.00200	0.217	0.369	8.27	0.176
Background-01 @ 4' (40.304883 / -104.866929)	06/09/22	4	1.6	NA	NA	NA	NA	NA	NA	NA	NA	NA	NA	NA	8.15	NA
SB-01 @ 5-7.5' (40.304669 / -104.867301)	05/26/23	5-7.5	5.2	<0.00200	<0.00200	<0.00200	<0.00200	<0.200	<25.0	<100	<0.00200	<0.00200	NA	NA	NA	NA
SB-01 @ 10-12.5' (40.304669 / -104.867301)	05/26/23	10-12.5	7.2	<0.00200	<0.00200	<0.00200	<0.00200	<0.200	<25.0	<100	<0.00200	<0.00200	NA	NA	NA	NA
SB-02 @ 5-7.5' (40.304727 / -104.867299)	05/26/23	5-7.5	3.5	<0.00200	<0.00200	<0.00200	<0.00200	<0.200	<25.0	<100	<0.00200	<0.00200	NA	NA	NA	NA
SB-03 @ 5-7.5' (40.304672 / -104.867249)	05/26/23	5-7.5	3.1	<0.00200	<0.00200	<0.00200	<0.00200	<0.200	<25.0	<100	<0.00200	<0.00200	NA	NA	NA	NA
SB-04 @ 5-7.5' (40.304609 / -104.867307)	05/26/23	5-7.5	3.8	<0.00200	<0.00200	<0.00200	<0.00200	<0.200	<25.0	<100	<0.00200	<0.00200	NA	NA	NA	NA
SB-05 @ 5-7.5' (40.304676 / -104.867384)	05/26/23	5-7.5	5.8	<0.00200	<0.00200	<0.00200	<0.00200	<0.200	<25.0	<100	<0.00200	<0.00200	NA	NA	NA	NA
COGCC = Colorado Oil and Gas Conservation Commission mg/kg = milligrams per kilogram mmhos/cm = millimhos per centimeter PID = Photoionization Detector ppm-v = parts per million by volume mg/L = milligrams per liter SAR = Sodium Adsorption Ratio Note: Values presented with a less than symbol (<) did not contain concentrations at or above the laboratory reporting limit. Note: Values presented in BOLD exceed COGCC Table 915-1 Regulatory Limits.																
							TPH-GRO = Total Petroleum Hydrocarbons - Gasoline Range Organics			1,2,4-TMB = 1,2,4-Trimethylbenzene						
							TPH-DRO = Total Petroleum Hydrocarbons - Diesel Range Organics			1,3,5-TMB = 1,3,5-Trimethylbenzene						
							TPH-RRO = Total Petroleum Hydrocarbons - Residual Range Organics									
							NA = Not Analyzed									

TABLE 3
PAH ANALYTICAL RESULTS SUMMARY
UPRC T4N-R67W-S23 TANK BATTERY
HISTORICAL RELEASE
40.304673 / -104.867302
NE1/4 NW1/4 SEC.23 T4N R67W 6PM
WELD COUNTY, COLORADO
LOCATION ID 329775
REMEDATION # 22738

Sample Location (Latitude/Longitude)	Date	Approximate Depth (feet)	PID Reading (ppm- v)	1-Methyl- naphthalene (mg/kg)	2-Methyl- naphthalene (mg/kg)	Acenaphthene (mg/kg)	Anthracene (mg/kg)	Benzo(a)-anthracene (mg/kg)	Benzo(a)- pyrene (mg/kg)	Benzo(b)- fluoranthene (mg/kg)	Benzo(k)- fluoranthene (mg/kg)	Chrysene (mg/kg)	Dibenzo(a,h)- anthracene (mg/kg)	Fluoranthene (mg/kg)	Fluorene (mg/kg)	Indeno(1,2,3- cd)-pyrene (mg/kg)	Naphthalene (mg/kg)	Pyrene (mg/kg)
COGCC Table 915-1 Residential Screening Levels				18	24	360	1,800	1.1	0.11	1.1	11	110	0.11	240	240	1.1	2	180
COGCC Table 915-1 Protection of Groundwater Soil Screening Levels				0.006	0.019	0.55	5.8	0.011	0.24	0.3	2.9	9	0.096	8.9	0.54	0.98	0.0038	1.3
WV-SS-03 @ 5' (40.304649 / -104.867302)	06/09/22	5	2.4	<0.00067	<0.00067	<0.00067	<0.00067	<0.00067	<0.00067	<0.00067	<0.00067	<0.00067	<0.00067	<0.00067	<0.00067	<0.00067	<0.00067	<0.00067
WV-FS-01 @ 5' (40.304676 / -104.867301)	06/09/22	6	1.4	0.00723*	0.00695	0.0162	<0.00067	0.00194	<0.00067	0.00271	<0.00067	0.0066	<0.00067	0.00106	0.0318	<0.00067	0.000586	0.00576
TB-SS-01 @ 1' (40.304680 / -104.867349)	06/09/22	1	1.5	<0.00067	<0.00067	<0.00067	<0.00067	0.000668	0.00105	0.00152	0.000822	0.00105	<0.00067	0.00255	<0.00067	0.000985	<0.00067	0.00237
TB-SS-02 @ 3' (40.304720 / -104.867080)	06/09/22	3	2.4	<0.00067	<0.00067	<0.00067	<0.00067	<0.00067	<0.00067	<0.00067	<0.00067	<0.00067	<0.00067	<0.00067	<0.00067	<0.00067	<0.00067	<0.00067
SB-01 @ 5-7.5' (40.304669 / -104.867301)	05/26/23	5-7.5	5.2	<0.002	<0.002	<0.020	<0.020	<0.005	<0.020	<0.020	<0.020	<0.020	<0.020	<0.020	<0.020	<0.020	<0.00380	<0.020
SB-01 @ 10-12.5' (40.304669 / -104.867301)	05/26/23	10-12.5	7.2	<0.002	<0.002	<0.020	<0.020	<0.005	<0.020	<0.020	<0.020	<0.020	<0.020	<0.020	<0.020	<0.020	<0.00380	<0.020
SB-02 @ 5-7.5' (40.304727 / -104.867299)	05/26/23	5-7.5	3.5	<0.002	<0.002	<0.020	<0.020	<0.005	<0.020	<0.020	<0.020	<0.020	<0.020	<0.020	<0.020	<0.020	<0.00380	<0.020
SB-03 @ 5-7.5' (40.304672 / -104.867249)	05/26/23	5-7.5	3.1	<0.002	<0.002	<0.020	<0.020	<0.005	<0.020	<0.020	<0.020	<0.020	<0.020	<0.020	<0.020	<0.020	<0.00380	<0.020
SB-04 @ 5-7.5' (40.304609 / -104.867307)	05/26/23	5-7.5	3.8	<0.002	<0.002	<0.020	<0.020	<0.005	<0.020	<0.020	<0.020	<0.020	<0.020	<0.020	<0.020	<0.020	<0.00380	<0.020
SB-05 @ 5-7.5' (40.304676 / -104.867384)	05/26/23	5-7.5	5.8	<0.002	<0.002	<0.020	<0.020	<0.005	<0.020	<0.020	<0.020	<0.020	<0.020	<0.020	<0.020	<0.020	<0.00380	<0.020
COGCC = Colorado Oil and Gas Conservation Commission mg/kg = milligrams per kilogram ppm-v = parts per million by volume Note: Values presented with a less than symbol (<) did not contain concentrations at or above the laboratory reporting limit. Note: Values presented in BOLD contained concentrations exceeding COGCC Table 915-1 Regulatory Limits. Values presented with an asterisk (*) exceed COGCC Table 915-1 Protection of Groundwater Soil Screening Levels.				PID = Photoionization Detector														

ATTACHMENT A

Soil Boring Logs / Well Completion Diagram

DEPTH (FT)	LITHOLOGY	SAMPLE				OVM/OVA (PPM)	BLOW COUNT (per 0.5 FT)	DEPTH (FT)	WELL CONSTRUCTION DETAIL	COMMENTS
	DESCRIPTION	GRAPHIC LOG	TYPE	NUMBER	RECOVERY %					
0	(0-11') clayey SAND - brown, dry, loose, fine grained, poorly-graded with ~15-20% clay, N/O, N/S	SC	DP	1	80	4.1	N/A			
						4.0				
5			DP	2	80	5.2	N/A			
						4.7				
10	(11-20') silty SAND - light brown, dry, loose, fine grained, poorly-graded with ~30% silt, N/O, N/S	SM	DP	3	80	7.2	N/A			
						3.1				
15			DP	4	80	2.2	N/A			
						1.7				
20	BoB @ 20'							20		HA - Hand Auger DP - Direct Push HC - Hydrocarbon BoB - Bottom of Boring N/O - no odor N/S - no staining TOC - top of casing bgs - below ground surface
25										
30										

START/COMPLETION DATE: 05/26/23

SAND PACK INTERVAL (FEET): 4-20

PROJECT: UPRC T4N-R67W-S23 TANK BATTERY

BENTONITE/GROUT INTERVAL (FEET): 0-4

LOGGED BY: E. LOVELL

WELL SCREEN INTERVAL (FEET): 5-20

DRILLING COMPANY/EQUIPMENT: EAGLE/GEOPROBE

WELL DIAMETER (INCHES): 1

BORING DEPTH (FEET): 20

WELL DEPTH (FEET): 20

PID INSTRUMENT: MiniRAE 3000 - PID #6

TIME STARTED/COMPLETED: 0930/0950

SAMPLE COLLECTION DEPTH (FT.)/TIME: 5-7.5/0939, 10-12.5/0942



EAGLE
 ENVIRONMENTAL
 CONSULTING, LLC

8000 W 44th Ave., Wheat Ridge, CO 80033
 Ph: 303-433-0479 • F: 303-325-5449

Boring Log/Well Completion Diagram:

SB-02

PAGE 1 OF 1

DEPTH (FT)	LITHOLOGY	SAMPLE				OVM/OVA (PPM)	BLOW COUNT (per 0.5 FT)	DEPTH (FT)	WELL CONSTRUCTION DETAIL	COMMENTS
	DESCRIPTION	GRAPHIC LOG	TYPE	NUMBER	RECOVERY %					
0	(0-8') clayey SAND - brown, dry, loose, fine grained, poorly-graded with ~15-20% clay, N/O, N/S	SC	DP	1	100	1.4	N/A		WELL NOT COMPLETED	
						2.6				
5		SM	DP	2	90	3.5	N/A	5		
	(8-10') silty SAND - light brown, dry, loose, fine grained, poorly-graded with ~30% silt, N/O, N/S					2.6				
10	BoB @ 10'							10		
15								15		
20								20		
25								25		
30										

HA - Hand Auger
DP - Direct Push
HC - Hydrocarbon
BoB - Bottom of Boring
N/O - no odor
N/S - no staining
TOC - top of casing
bgs - below ground surface

START/COMPLETION DATE: 05/26/23

SAND PACK INTERVAL (FEET): N/A

PROJECT: UPRC T4N-R67W-S23 TANK BATTERY

BENTONITE/GROUT INTERVAL (FEET): N/A

LOGGED BY: E. LOVELL

WELL SCREEN INTERVAL (FEET): N/A

DRILLING COMPANY/EQUIPMENT: EAGLE/GEOPROBE

WELL DIAMETER (INCHES): N/A

BORING DEPTH (FEET): 10

WELL DEPTH (FEET): N/A

PID INSTRUMENT: MiniRAE 3000 - PID #6

TIME STARTED/COMPLETED: 1020/1030

SAMPLE COLLECTION DEPTH (FT.)/TIME: 5-7.5/1025



EAGLE
ENVIRONMENTAL
CONSULTING, LLC

8000 W 44th Ave., Wheat Ridge, CO 80033
Ph: 303-433-0479 • F: 303-325-5449

Boring Log/Well Completion Diagram:

SB-03

PAGE 1 OF 1

DEPTH (FT)	LITHOLOGY	SAMPLE				OVM/OVA (PPM)	BLOW COUNT (per 0.5 FT)	DEPTH (FT)	WELL CONSTRUCTION DETAIL	COMMENTS
	DESCRIPTION	GRAPHIC LOG	TYPE	NUMBER	RECOVERY %					
0	(0-9') clayey SAND - brown, dry, loose-medium dense, fine grained, poorly-graded with ~20-30% clay, N/O, N/S	SC	DP	1	100	2.6	N/A	5	WELL NOT COMPLETED	
						2.2				
5		DP	2	80		3.1	N/A	10		
						1.3				
10	(9-10') silty SAND - light brown, dry, loose, fine grained, poorly-graded with ~30% silt, N/O, N/S	SM								
	BoB @ 10'									
15										
20										
25										
30										

HA - Hand Auger
DP - Direct Push
HC - Hydrocarbon
BoB - Bottom of Boring
N/O - no odor
N/S - no staining
TOC - top of casing
bgs - below ground surface

START/COMPLETION DATE: 05/26/23

SAND PACK INTERVAL (FEET): N/A

PROJECT: UPRC T4N-R67W-S23 TANK BATTERY

BENTONITE/GROUT INTERVAL (FEET): N/A

LOGGED BY: E. LOVELL

WELL SCREEN INTERVAL (FEET): N/A

DRILLING COMPANY/EQUIPMENT: EAGLE/GEOPROBE

WELL DIAMETER (INCHES): N/A

BORING DEPTH (FEET): 10

WELL DEPTH (FEET): N/A

PID INSTRUMENT: MiniRAE 3000 - PID #6

TIME STARTED/COMPLETED: 1010/1020

SAMPLE COLLECTION DEPTH (FT.)/TIME: 5-7.5/1015



EAGLE
ENVIRONMENTAL
CONSULTING, LLC

8000 W 44th Ave., Wheat Ridge, CO 80033
Ph: 303-433-0479 • F: 303-325-5449

Boring Log/Well Completion Diagram:

SB-04

PAGE 1 OF 1

DEPTH (FT)	LITHOLOGY	SAMPLE				OVM/OVA (PPM)	BLOW COUNT (per 0.5 FT)	DEPTH (FT)	WELL CONSTRUCTION DETAIL	COMMENTS
	DESCRIPTION	GRAPHIC LOG	TYPE	NUMBER	RECOVERY %					
0	(0-6') clayey SAND - brown, dry, loose, fine grained, poorly-graded with ~15-20% clay, N/O, N/S	SC	DP	1	100	2.2	N/A	5	WELL NOT COMPLETED	
						2.6				
5	(6-10') silty SAND - light brown, dry, loose, fine grained, poorly-graded with ~30% silt, N/O, N/S	SM	DP	2	90	3.8	N/A	10		
						1.8				
10	BoB @ 10'									
15										
20										
25										
30										

HA - Hand Auger
DP - Direct Push
HC - Hydrocarbon
BoB - Bottom of Boring
N/O - no odor
N/S - no staining
TOC - top of casing
bgs - below ground surface

START/COMPLETION DATE: 05/26/23

SAND PACK INTERVAL (FEET): N/A

PROJECT: UPRC T4N-R67W-S23 TANK BATTERY

BENTONITE/GROUT INTERVAL (FEET): N/A

LOGGED BY: E. LOVELL

WELL SCREEN INTERVAL (FEET): N/A

DRILLING COMPANY/EQUIPMENT: EAGLE/GEOPROBE

WELL DIAMETER (INCHES): N/A

BORING DEPTH (FEET): 10

WELL DEPTH (FEET): N/A

PID INSTRUMENT: MiniRAE 3000 - PID #6

TIME STARTED/COMPLETED: 1000/1010

SAMPLE COLLECTION DEPTH (FT.)/TIME: 5-7.5/1006



EAGLE
ENVIRONMENTAL
CONSULTING, LLC

8000 W 44th Ave., Wheat Ridge, CO 80033
Ph: 303-433-0479 • F: 303-325-5449

Boring Log/Well Completion Diagram:

SB-05

PAGE 1 OF 1

DEPTH (FT)	LITHOLOGY	SAMPLE				OVM/OVA (PPM)	BLOW COUNT (per 0.5 FT)	DEPTH (FT)	WELL CONSTRUCTION DETAIL	COMMENTS
	DESCRIPTION	GRAPHIC LOG	TYPE	NUMBER	RECOVERY %					
0	(0-8') clayey SAND - brown, dry, loose, fine grained, poorly-graded with ~15-20% clay, N/O, N/S	SC	DP	1	90	3.6	N/A		WELL NOT COMPLETED	
						4.5				
5		SM	DP	2	90	5.8	N/A	5		
	(8-10') silty SAND - light brown, dry, loose, fine grained, poorly-graded with ~20-30% silt, N/O, N/S					3.7				
10	BoB @ 10'							10		
15								15		
20								20		
25								25		
30										

HA - Hand Auger
DP - Direct Push
HC - Hydrocarbon
BoB - Bottom of Boring
N/O - no odor
N/S - no staining
TOC - top of casing
bgs - below ground surface

START/COMPLETION DATE: 05/26/23

SAND PACK INTERVAL (FEET): N/A

PROJECT: UPRC T4N-R67W-S23 TANK BATTERY

BENTONITE/GROUT INTERVAL (FEET): N/A

LOGGED BY: E. LOVELL

WELL SCREEN INTERVAL (FEET): N/A

DRILLING COMPANY/EQUIPMENT: EAGLE/GEOPROBE

WELL DIAMETER (INCHES): N/A

BORING DEPTH (FEET): 10

WELL DEPTH (FEET): N/A

PID INSTRUMENT: MiniRAE 3000 - PID #6

TIME STARTED/COMPLETED: 0952/1000

SAMPLE COLLECTION DEPTH (FT.)/TIME: 5-7.5/0956



EAGLE
ENVIRONMENTAL
CONSULTING, LLC

8000 W 44th Ave., Wheat Ridge, CO 80033
Ph: 303-433-0479 • F: 303-325-5449

ATTACHMENT B

Laboratory Analytical Report



June 08, 2023

Eagle Environmental Consulting, LLC

Martin C Eckert III

8000 W 44th Ave

Wheat Ridge CO 80033

Project Name - Noble - UPRC T4N-R67W-S23 Tank Battery **Project Number - [none]**

Attached are your analytical results for Noble - UPRC T4N-R67W-S23 Tank Battery received by Origins Laboratory, Inc. May 26, 2023. This project is associated with Origins project number Y305714-01.

The analytical results in the following report were analyzed under the guidelines of EPA Methods. These methods are identified as follows; "SW" are defined in SW-846, "EPA" are defined in 40CFR part 136 and "SM" are defined in the most current revision of Standard Methods For the Examination of Water and Wastewater.

The analytical results apply specifically to the samples and analyses specified per the attached Chain of Custody. As such, this report shall not be reproduced except in full, without the written approval of Origin's laboratory.

Unless otherwise noted, the analytical results for all soil samples are reported on a wet weight basis. All analytical analyses were performed under NELAP guidelines unless noted by a data qualifier.

Any holding time exceedances, deviations from the method specifications or deviations from Origins Laboratory's Standard Operating Procedures are outlined in the case narrative.

Thank you for selecting Origins for your analytical needs. Please contact us with any questions concerning this report, or if we can help with anything at all.

Origins Laboratory, Inc.
303.433.1322
o-squad@oelabinc.com



1725 Elk Place, Denver, CO 80211 | Phone: 303.433.1322 | Fax: 303.265.9645

Eagle Environmental Consulting, LLC

8000 W 44th Ave

Wheat Ridge CO 80033

Martin C Eckert III

Project Number: [none]

Project: Noble - UPRC T4N-R67W-S23 Tank
Battery

CROSS REFERENCE REPORT

Sample ID	Laboratory ID	Matrix	Date Sampled	Date Received
SB-01@5-7.5'	Y305714-01	Soil	May 26, 2023 9:39	05/26/2023 12:46
SB-01@10-12.5'	Y305714-02	Soil	May 26, 2023 9:42	05/26/2023 12:46
SB-02@5-7.5'	Y305714-03	Soil	May 26, 2023 10:25	05/26/2023 12:46
SB-03@5-7.5'	Y305714-04	Soil	May 26, 2023 10:15	05/26/2023 12:46
SB-04@5-7.5'	Y305714-05	Soil	May 26, 2023 10:06	05/26/2023 12:46
SB-05@5-7.5'	Y305714-06	Soil	May 26, 2023 9:56	05/26/2023 12:46

Origins Laboratory, Inc.



The results in this report apply to the samples analyzed in accordance with the chain of custody document. This analytical report must be reproduced in its entirety.

Eagle Environmental Consulting, LLC
8000 W 44th Ave
Wheat Ridge CO 80033

Martin C Eckert III
Project Number: [none]
Project: Noble - UPRC T4N-R67W-S23 Tank Battery

Origins Laboratory

F-012207-01-R1
Effective Date: 01/09/12

Sample Receipt Checklist

Origins Work Order: UB05714

Client: Eagle

Client Project ID: UPRC T4N-R67W-S23 TB

Checklist Completed by: JH/CHS

Shipped Via: HP

(UPS, FedEx, Hand Delivered, Pick-up, etc.)

Date/time completed: 5/20/23

Airbill #: na

Matrix(s) Received: (Check all that apply): ☒ Soil/Solid

☐ Water

☐ Other:

Cooler Number/Temperature: 1 3 °C 1 °C 1 °C (Describe)

Thermometer ID: W04

Requirement Description	Yes	No	N/A	Comments (if any)
If samples require cooling, was the temperature between 0°C to ≤ 6°C ⁽¹⁾ ?	<input checked="" type="checkbox"/>	<input type="checkbox"/>	<input type="checkbox"/>	
Is there ice present (document if blue ice is used)	<input checked="" type="checkbox"/>	<input type="checkbox"/>	<input type="checkbox"/>	
Are custody seals present on cooler? (if so, document in comments if they are signed and dated, broken or intact)	<input type="checkbox"/>	<input checked="" type="checkbox"/>	<input type="checkbox"/>	
Are custody seals present on each sample container? (if so, document in comments if they are signed and dated, broken or intact)	<input type="checkbox"/>	<input checked="" type="checkbox"/>	<input type="checkbox"/>	
Were all samples received intact ⁽¹⁾ ?	<input checked="" type="checkbox"/>	<input type="checkbox"/>	<input type="checkbox"/>	
Was adequate sample volume provided ⁽¹⁾ ?	<input checked="" type="checkbox"/>	<input type="checkbox"/>	<input type="checkbox"/>	
Are short holding time analytes or samples with HTs due within 48 hours present ⁽¹⁾ ?	<input type="checkbox"/>	<input checked="" type="checkbox"/>	<input type="checkbox"/>	
Is a chain-of-custody (COC) present and filled out completely ⁽¹⁾ ?	<input checked="" type="checkbox"/>	<input type="checkbox"/>	<input type="checkbox"/>	
Does the COC agree with the number and type of sample bottles received ⁽¹⁾ ?	<input checked="" type="checkbox"/>	<input type="checkbox"/>	<input type="checkbox"/>	
Do the sample IDs on the bottle labels match the COC ⁽¹⁾ ?	<input checked="" type="checkbox"/>	<input type="checkbox"/>	<input type="checkbox"/>	
Is the COC properly relinquished by the client with date and time recorded ⁽¹⁾ ?	<input checked="" type="checkbox"/>	<input type="checkbox"/>	<input type="checkbox"/>	
For volatiles in water – is there headspace (> ¼ inch bubble) present? If yes, contact client and note in narrative.	<input type="checkbox"/>	<input type="checkbox"/>	<input checked="" type="checkbox"/>	
Are samples preserved that require preservation and was it checked ⁽¹⁾ ? (note ID of confirmation instrument used in comments) / (preservation is not confirmed for subcontracted analyses in order to insure sample integrity)/(pH <2 for samples preserved with HNO3, HCL, H2SO4) / (pH >10 for samples preserved with NaAsO2+NaOH, ZnAc+NaOH)	<input type="checkbox"/>	<input type="checkbox"/>	<input checked="" type="checkbox"/>	
Additional Comments (if any):				

⁽¹⁾ If NO, then contact the client before proceeding with analysis and note date/time and person contacted as well as the corrective action to in the additional comments (above) and the case narrative.

Reviewed by (Project Manager) [Signature]

Date/Time Reviewed

Origins Laboratory, Inc.

[Signature]

The results in this report apply to the samples analyzed in accordance with the chain of custody document. This analytical report must be reproduced in its entirety.

Eagle Environmental Consulting, LLC
8000 W 44th Ave
Wheat Ridge CO 80033

Martin C Eckert III
Project Number: [none]
Project: Noble - UPRC T4N-R67W-S23 Tank Battery

SB-01@5-7.5'

5/26/2023 9:39:00AM

Analyte	Result	Reporting Limit	Units	Dilution	Batch	Analyst	Prepared	Analyzed	Notes
---------	--------	-----------------	-------	----------	-------	---------	----------	----------	-------

Origins Laboratory, Inc.
Y305714-01 (Soil)

DRO/ORO by EPA 8015D

Diesel (C10-C28)	ND	25.0	mg/kg	1	B3E3019	ZZZ	05/30/2023	06/02/2023	U
Residual Range Organics (C28-C40)	ND	100	"	"	"	ZZZ	"	"	U

Surrogate: o-Terphenyl 74.6 % 50-150 " " "

GBTEX+TMBs by 8260D

1,2,4-Trimethylbenzene	ND	0.00200	mg/kg	1	B3E3027	ZZZ	05/30/2023	05/30/2023	U
1,3,5-Trimethylbenzene	ND	0.00200	"	"	"	ZZZ	"	"	U
Benzene	ND	0.00200	"	"	"	ZZZ	"	"	U
Ethylbenzene	ND	0.00200	"	"	"	ZZZ	"	"	U
Naphthalene	ND	0.00380	"	"	"	ZZZ	"	"	U
Toluene	ND	0.00200	"	"	"	ZZZ	"	"	U
Xylenes, total	ND	0.00200	"	"	"	ZZZ	"	"	U
Gasoline Range Hydrocarbons	ND	0.200	"	"	"	ZZZ	"	"	U

Surrogate: 1,2-Dichloroethane-d4 100 % 70-130 " " "
Surrogate: Toluene-d8 105 % 70-130 " " "
Surrogate: 4-Bromofluorobenzene 104 % 70-130 " " "

PAH by EPA 8270E

1-Methylnaphthalene	ND	0.002	mg/kg	1	B3E2624	agile	05/26/2023	05/31/2023	U
---------------------	----	-------	-------	---	---------	-------	------------	------------	---

Origins Laboratory, Inc.



The results in this report apply to the samples analyzed in accordance with the chain of custody document. This analytical report must be reproduced in its entirety.

Eagle Environmental Consulting, LLC
8000 W 44th Ave
Wheat Ridge CO 80033

Martin C Eckert III
Project Number: [none]
Project: Noble - UPRC T4N-R67W-S23 Tank
Battery

SB-01@5-7.5'

5/26/2023 9:39:00AM

Analyte	Result	Reporting Limit	Units	Dilution	Batch	Analyst	Prepared	Analyzed	Notes
---------	--------	-----------------	-------	----------	-------	---------	----------	----------	-------

Origins Laboratory, Inc.
Y305714-01 (Soil)

PAH by EPA 8270E

2-Methylnaphthalene	ND	0.002	mg/kg	1	B3E2624	agile	05/26/2023	05/31/2023	U
Acenaphthene	ND	0.020	"	"	"	agile	"	"	U
Anthracene	ND	0.020	"	"	"	agile	"	"	U
Benzo (a) anthracene	ND	0.005	"	"	"	agile	"	"	U
Benzo (a) pyrene	ND	0.020	"	"	"	agile	"	"	U
Benzo (b) fluoranthene	ND	0.020	"	"	"	agile	"	"	U
Benzo (k) fluoranthene	ND	0.020	"	"	"	agile	"	"	U
Chrysene	ND	0.020	"	"	"	agile	"	"	U
Dibenz (a,h) anthracene	ND	0.020	"	"	"	agile	"	"	U
Fluoranthene	ND	0.020	"	"	"	agile	"	"	U
Fluorene	ND	0.020	"	"	"	agile	"	"	U
Indeno (1,2,3-cd) pyrene	ND	0.020	"	"	"	agile	"	"	U
Pyrene	ND	0.020	"	"	"	agile	"	"	U

Surrogate: Nitrobenzene-d5	101 %	60-130			"	"	"
Surrogate: 2-Fluorobiphenyl	100 %	60-130			"	"	"
Surrogate: Terphenyl-d14	105 %	60-130			"	"	"

Origins Laboratory, Inc.



The results in this report apply to the samples analyzed in accordance with the chain of custody document. This analytical report must be reproduced in its entirety.

Eagle Environmental Consulting, LLC
8000 W 44th Ave
Wheat Ridge CO 80033

Martin C Eckert III
Project Number: [none]
Project: Noble - UPRC T4N-R67W-S23 Tank Battery

SB-01@10-12.5'
5/26/2023 9:42:00AM

Analyte	Result	Reporting Limit	Units	Dilution	Batch	Analyst	Prepared	Analyzed	Notes
---------	--------	-----------------	-------	----------	-------	---------	----------	----------	-------

Origins Laboratory, Inc. Y305714-02 (Soil)

DRO/ORO by EPA 8015D

Diesel (C10-C28)	ND	25.0	mg/kg	1	B3E3019	ZZZ	05/30/2023	06/02/2023	U
Residual Range Organics (C28-C40)	ND	100	"	"	"	ZZZ	"	"	U

Surrogate: o-Terphenyl 70.6 % 50-150 " " "

GBTEX+TMBs by 8260D

1,2,4-Trimethylbenzene	ND	0.00200	mg/kg	1	B3E3027	ZZZ	05/30/2023	05/30/2023	U
1,3,5-Trimethylbenzene	ND	0.00200	"	"	"	ZZZ	"	"	U
Benzene	ND	0.00200	"	"	"	ZZZ	"	"	U
Ethylbenzene	ND	0.00200	"	"	"	ZZZ	"	"	U
Naphthalene	ND	0.00380	"	"	"	ZZZ	"	"	U
Toluene	ND	0.00200	"	"	"	ZZZ	"	"	U
Xylenes, total	ND	0.00200	"	"	"	ZZZ	"	"	U
Gasoline Range Hydrocarbons	ND	0.200	"	"	"	ZZZ	"	"	U

Surrogate: 1,2-Dichloroethane-d4 103 % 70-130 " " "
Surrogate: Toluene-d8 103 % 70-130 " " "
Surrogate: 4-Bromofluorobenzene 103 % 70-130 " " "

PAH by EPA 8270E

1-Methylnaphthalene	ND	0.002	mg/kg	1	B3E2624	agile	05/26/2023	05/31/2023	U
---------------------	----	-------	-------	---	---------	-------	------------	------------	---

Origins Laboratory, Inc.



The results in this report apply to the samples analyzed in accordance with the chain of custody document. This analytical report must be reproduced in its entirety.

Eagle Environmental Consulting, LLC
8000 W 44th Ave
Wheat Ridge CO 80033

Martin C Eckert III
Project Number: [none]
Project: Noble - UPRC T4N-R67W-S23 Tank
Battery

SB-01@10-12.5'

5/26/2023 9:42:00AM

Analyte	Result	Reporting Limit	Units	Dilution	Batch	Analyst	Prepared	Analyzed	Notes
---------	--------	-----------------	-------	----------	-------	---------	----------	----------	-------

Origins Laboratory, Inc.
Y305714-02 (Soil)

PAH by EPA 8270E

2-Methylnaphthalene	ND	0.002	mg/kg	1	B3E2624	agile	05/26/2023	05/31/2023	U
Acenaphthene	ND	0.020	"	"	"	agile	"	"	U
Anthracene	ND	0.020	"	"	"	agile	"	"	U
Benzo (a) anthracene	ND	0.005	"	"	"	agile	"	"	U
Benzo (a) pyrene	ND	0.020	"	"	"	agile	"	"	U
Benzo (b) fluoranthene	ND	0.020	"	"	"	agile	"	"	U
Benzo (k) fluoranthene	ND	0.020	"	"	"	agile	"	"	U
Chrysene	ND	0.020	"	"	"	agile	"	"	U
Dibenz (a,h) anthracene	ND	0.020	"	"	"	agile	"	"	U
Fluoranthene	ND	0.020	"	"	"	agile	"	"	U
Fluorene	ND	0.020	"	"	"	agile	"	"	U
Indeno (1,2,3-cd) pyrene	ND	0.020	"	"	"	agile	"	"	U
Pyrene	ND	0.020	"	"	"	agile	"	"	U

Surrogate: Nitrobenzene-d5	100 %	60-130	"	"	"
Surrogate: 2-Fluorobiphenyl	99.8 %	60-130	"	"	"
Surrogate: Terphenyl-d14	103 %	60-130	"	"	"

Origins Laboratory, Inc.



The results in this report apply to the samples analyzed in accordance with the chain of custody document. This analytical report must be reproduced in its entirety.

Eagle Environmental Consulting, LLC
8000 W 44th Ave
Wheat Ridge CO 80033

Martin C Eckert III
Project Number: [none]
Project: Noble - UPRC T4N-R67W-S23 Tank Battery

SB-02@5-7.5'

5/26/2023 10:25:00AM

Analyte	Result	Reporting Limit	Units	Dilution	Batch	Analyst	Prepared	Analyzed	Notes
---------	--------	-----------------	-------	----------	-------	---------	----------	----------	-------

Origins Laboratory, Inc. Y305714-03 (Soil)

DRO/ORO by EPA 8015D

Diesel (C10-C28)	ND	25.0	mg/kg	1	B3E3019	ZZZ	05/30/2023	06/02/2023	U
Residual Range Organics (C28-C40)	ND	100	"	"	"	ZZZ	"	"	U

Surrogate: o-Terphenyl 56.3 % 50-150 " " "

GBTEX+TMBs by 8260D

1,2,4-Trimethylbenzene	ND	0.00200	mg/kg	1	B3E3027	ZZZ	05/30/2023	05/30/2023	U
1,3,5-Trimethylbenzene	ND	0.00200	"	"	"	ZZZ	"	"	U
Benzene	ND	0.00200	"	"	"	ZZZ	"	"	U
Ethylbenzene	ND	0.00200	"	"	"	ZZZ	"	"	U
Naphthalene	ND	0.00380	"	"	"	ZZZ	"	"	U
Toluene	ND	0.00200	"	"	"	ZZZ	"	"	U
Xylenes, total	ND	0.00200	"	"	"	ZZZ	"	"	U
Gasoline Range Hydrocarbons	ND	0.200	"	"	"	ZZZ	"	"	U

Surrogate: 1,2-Dichloroethane-d4 104 % 70-130 " " "
Surrogate: Toluene-d8 106 % 70-130 " " "
Surrogate: 4-Bromofluorobenzene 99.1 % 70-130 " " "

PAH by EPA 8270E

1-Methylnaphthalene	ND	0.002	mg/kg	1	B3E2624	agile	05/26/2023	05/31/2023	U
---------------------	----	-------	-------	---	---------	-------	------------	------------	---

Origins Laboratory, Inc.



The results in this report apply to the samples analyzed in accordance with the chain of custody document. This analytical report must be reproduced in its entirety.

Eagle Environmental Consulting, LLC
8000 W 44th Ave
Wheat Ridge CO 80033

Martin C Eckert III
Project Number: [none]
Project: Noble - UPRC T4N-R67W-S23 Tank
Battery

SB-02@5-7.5'

5/26/2023 10:25:00AM

Analyte	Result	Reporting Limit	Units	Dilution	Batch	Analyst	Prepared	Analyzed	Notes
---------	--------	--------------------	-------	----------	-------	---------	----------	----------	-------

Origins Laboratory, Inc.
Y305714-03 (Soil)

PAH by EPA 8270E

2-Methylnaphthalene	ND	0.002	mg/kg	1	B3E2624	agile	05/26/2023	05/31/2023	U
Acenaphthene	ND	0.020	"	"	"	agile	"	"	U
Anthracene	ND	0.020	"	"	"	agile	"	"	U
Benzo (a) anthracene	ND	0.005	"	"	"	agile	"	"	U
Benzo (a) pyrene	ND	0.020	"	"	"	agile	"	"	U
Benzo (b) fluoranthene	ND	0.020	"	"	"	agile	"	"	U
Benzo (k) fluoranthene	ND	0.020	"	"	"	agile	"	"	U
Chrysene	ND	0.020	"	"	"	agile	"	"	U
Dibenz (a,h) anthracene	ND	0.020	"	"	"	agile	"	"	U
Fluoranthene	ND	0.020	"	"	"	agile	"	"	U
Fluorene	ND	0.020	"	"	"	agile	"	"	U
Indeno (1,2,3-cd) pyrene	ND	0.020	"	"	"	agile	"	"	U
Pyrene	ND	0.020	"	"	"	agile	"	"	U

Surrogate: Nitrobenzene-d5	101 %	60-130			"	"	"
Surrogate: 2-Fluorobiphenyl	101 %	60-130			"	"	"
Surrogate: Terphenyl-d14	98.3 %	60-130			"	"	"

Origins Laboratory, Inc.



The results in this report apply to the samples analyzed in accordance with the chain of custody document. This analytical report must be reproduced in its entirety.

Eagle Environmental Consulting, LLC
8000 W 44th Ave
Wheat Ridge CO 80033

Martin C Eckert III
Project Number: [none]
Project: Noble - UPRC T4N-R67W-S23 Tank Battery

SB-03@5-7.5'

5/26/2023 10:15:00AM

Analyte	Result	Reporting Limit	Units	Dilution	Batch	Analyst	Prepared	Analyzed	Notes
---------	--------	-----------------	-------	----------	-------	---------	----------	----------	-------

Origins Laboratory, Inc.
Y305714-04 (Soil)

DRO/ORO by EPA 8015D

Diesel (C10-C28)	ND	25.0	mg/kg	1	B3E3019	ZZZ	05/30/2023	06/02/2023	U
Residual Range Organics (C28-C40)	ND	100	"	"	"	ZZZ	"	"	U

Surrogate: o-Terphenyl 68.1 % 50-150 " " "

GBTEX+TMBs by 8260D

1,2,4-Trimethylbenzene	ND	0.00200	mg/kg	1	B3E3027	ZZZ	05/30/2023	05/30/2023	U
1,3,5-Trimethylbenzene	ND	0.00200	"	"	"	ZZZ	"	"	U
Benzene	ND	0.00200	"	"	"	ZZZ	"	"	U
Ethylbenzene	ND	0.00200	"	"	"	ZZZ	"	"	U
Naphthalene	ND	0.00380	"	"	"	ZZZ	"	"	U
Toluene	ND	0.00200	"	"	"	ZZZ	"	"	U
Xylenes, total	ND	0.00200	"	"	"	ZZZ	"	"	U
Gasoline Range Hydrocarbons	ND	0.200	"	"	"	ZZZ	"	"	U

Surrogate: 1,2-Dichloroethane-d4 102 % 70-130 " " "
Surrogate: Toluene-d8 105 % 70-130 " " "
Surrogate: 4-Bromofluorobenzene 103 % 70-130 " " "

PAH by EPA 8270E

1-Methylnaphthalene	ND	0.002	mg/kg	1	B3E2624	agile	05/26/2023	05/31/2023	U
---------------------	----	-------	-------	---	---------	-------	------------	------------	---

Origins Laboratory, Inc.



The results in this report apply to the samples analyzed in accordance with the chain of custody document. This analytical report must be reproduced in its entirety.

Eagle Environmental Consulting, LLC
8000 W 44th Ave
Wheat Ridge CO 80033

Martin C Eckert III
Project Number: [none]
Project: Noble - UPRC T4N-R67W-S23 Tank
Battery

SB-03@5-7.5'

5/26/2023 10:15:00AM

Analyte	Result	Reporting Limit	Units	Dilution	Batch	Analyst	Prepared	Analyzed	Notes
---------	--------	-----------------	-------	----------	-------	---------	----------	----------	-------

Origins Laboratory, Inc.
Y305714-04 (Soil)

PAH by EPA 8270E

2-Methylnaphthalene	ND	0.002	mg/kg	1	B3E2624	agile	05/26/2023	05/31/2023	U
Acenaphthene	ND	0.020	"	"	"	agile	"	"	U
Anthracene	ND	0.020	"	"	"	agile	"	"	U
Benzo (a) anthracene	ND	0.005	"	"	"	agile	"	"	U
Benzo (a) pyrene	ND	0.020	"	"	"	agile	"	"	U
Benzo (b) fluoranthene	ND	0.020	"	"	"	agile	"	"	U
Benzo (k) fluoranthene	ND	0.020	"	"	"	agile	"	"	U
Chrysene	ND	0.020	"	"	"	agile	"	"	U
Dibenz (a,h) anthracene	ND	0.020	"	"	"	agile	"	"	U
Fluoranthene	ND	0.020	"	"	"	agile	"	"	U
Fluorene	ND	0.020	"	"	"	agile	"	"	U
Indeno (1,2,3-cd) pyrene	ND	0.020	"	"	"	agile	"	"	U
Pyrene	ND	0.020	"	"	"	agile	"	"	U

Surrogate: Nitrobenzene-d5	102 %	60-130				"	"	"	
Surrogate: 2-Fluorobiphenyl	103 %	60-130				"	"	"	
Surrogate: Terphenyl-d14	98.6 %	60-130				"	"	"	

Origins Laboratory, Inc.



The results in this report apply to the samples analyzed in accordance with the chain of custody document. This analytical report must be reproduced in its entirety.

Eagle Environmental Consulting, LLC
8000 W 44th Ave
Wheat Ridge CO 80033

Martin C Eckert III
Project Number: [none]
Project: Noble - UPRC T4N-R67W-S23 Tank Battery

SB-04@5-7.5'

5/26/2023 10:06:00AM

Analyte	Result	Reporting Limit	Units	Dilution	Batch	Analyst	Prepared	Analyzed	Notes
---------	--------	-----------------	-------	----------	-------	---------	----------	----------	-------

Origins Laboratory, Inc.
Y305714-05 (Soil)

DRO/ORO by EPA 8015D

Diesel (C10-C28)	ND	25.0	mg/kg	1	B3E3019	ZZZ	05/30/2023	06/02/2023	U
Residual Range Organics (C28-C40)	ND	100	"	"	"	ZZZ	"	"	U

Surrogate: o-Terphenyl 51.9 % 50-150 " " "

GBTEX+TMBs by 8260D

1,2,4-Trimethylbenzene	ND	0.00200	mg/kg	1	B3E3027	ZZZ	05/30/2023	05/30/2023	U
1,3,5-Trimethylbenzene	ND	0.00200	"	"	"	ZZZ	"	"	U
Benzene	ND	0.00200	"	"	"	ZZZ	"	"	U
Ethylbenzene	ND	0.00200	"	"	"	ZZZ	"	"	U
Naphthalene	ND	0.00380	"	"	"	ZZZ	"	"	U
Toluene	ND	0.00200	"	"	"	ZZZ	"	"	U
Xylenes, total	ND	0.00200	"	"	"	ZZZ	"	"	U
Gasoline Range Hydrocarbons	ND	0.200	"	"	"	ZZZ	"	"	U

Surrogate: 1,2-Dichloroethane-d4 107 % 70-130 " " "
Surrogate: Toluene-d8 100 % 70-130 " " "
Surrogate: 4-Bromofluorobenzene 102 % 70-130 " " "

PAH by EPA 8270E

1-Methylnaphthalene	ND	0.002	mg/kg	1	B3E2624	agile	05/26/2023	05/31/2023	U
---------------------	----	-------	-------	---	---------	-------	------------	------------	---

Origins Laboratory, Inc.



The results in this report apply to the samples analyzed in accordance with the chain of custody document. This analytical report must be reproduced in its entirety.

Eagle Environmental Consulting, LLC
8000 W 44th Ave
Wheat Ridge CO 80033

Martin C Eckert III
Project Number: [none]
Project: Noble - UPRC T4N-R67W-S23 Tank Battery

SB-04@5-7.5'

5/26/2023 10:06:00AM

Analyte	Result	Reporting Limit	Units	Dilution	Batch	Analyst	Prepared	Analyzed	Notes
---------	--------	-----------------	-------	----------	-------	---------	----------	----------	-------

Origins Laboratory, Inc.
Y305714-05 (Soil)

PAH by EPA 8270E

2-Methylnaphthalene	ND	0.002	mg/kg	1	B3E2624	agile	05/26/2023	05/31/2023	U
Acenaphthene	ND	0.020	"	"	"	agile	"	"	U
Anthracene	ND	0.020	"	"	"	agile	"	"	U
Benzo (a) anthracene	ND	0.005	"	"	"	agile	"	"	U
Benzo (a) pyrene	ND	0.020	"	"	"	agile	"	"	U
Benzo (b) fluoranthene	ND	0.020	"	"	"	agile	"	"	U
Benzo (k) fluoranthene	ND	0.020	"	"	"	agile	"	"	U
Chrysene	ND	0.020	"	"	"	agile	"	"	U
Dibenz (a,h) anthracene	ND	0.020	"	"	"	agile	"	"	U
Fluoranthene	ND	0.020	"	"	"	agile	"	"	U
Fluorene	ND	0.020	"	"	"	agile	"	"	U
Indeno (1,2,3-cd) pyrene	ND	0.020	"	"	"	agile	"	"	U
Pyrene	ND	0.020	"	"	"	agile	"	"	U

Surrogate: Nitrobenzene-d5	103 %	60-130	"	"	"
Surrogate: 2-Fluorobiphenyl	100 %	60-130	"	"	"
Surrogate: Terphenyl-d14	106 %	60-130	"	"	"

Origins Laboratory, Inc.



The results in this report apply to the samples analyzed in accordance with the chain of custody document. This analytical report must be reproduced in its entirety.

Eagle Environmental Consulting, LLC
8000 W 44th Ave
Wheat Ridge CO 80033

Martin C Eckert III
Project Number: [none]
Project: Noble - UPRC T4N-R67W-S23 Tank Battery

SB-05@5-7.5'

5/26/2023 9:56:00AM

Analyte	Result	Reporting Limit	Units	Dilution	Batch	Analyst	Prepared	Analyzed	Notes
---------	--------	-----------------	-------	----------	-------	---------	----------	----------	-------

Origins Laboratory, Inc.
Y305714-06 (Soil)

DRO/ORO by EPA 8015D

Diesel (C10-C28)	ND	25.0	mg/kg	1	B3E3019	ZZZ	05/30/2023	06/02/2023	U
Residual Range Organics (C28-C40)	ND	100	"	"	"	ZZZ	"	"	U

Surrogate: o-Terphenyl 73.0 % 50-150 " " "

GBTEX+TMBs by 8260D

1,2,4-Trimethylbenzene	ND	0.00200	mg/kg	1	B3E3027	ZZZ	05/30/2023	05/30/2023	U
1,3,5-Trimethylbenzene	ND	0.00200	"	"	"	ZZZ	"	"	U
Benzene	ND	0.00200	"	"	"	ZZZ	"	"	U
Ethylbenzene	ND	0.00200	"	"	"	ZZZ	"	"	U
Naphthalene	ND	0.00380	"	"	"	ZZZ	"	"	U
Toluene	ND	0.00200	"	"	"	ZZZ	"	"	U
Xylenes, total	ND	0.00200	"	"	"	ZZZ	"	"	U
Gasoline Range Hydrocarbons	ND	0.200	"	"	"	ZZZ	"	"	U

Surrogate: 1,2-Dichloroethane-d4 102 % 70-130 " " "
Surrogate: Toluene-d8 106 % 70-130 " " "
Surrogate: 4-Bromofluorobenzene 101 % 70-130 " " "

PAH by EPA 8270E

1-Methylnaphthalene	ND	0.002	mg/kg	1	B3E2624	agile	05/26/2023	05/31/2023	U
---------------------	----	-------	-------	---	---------	-------	------------	------------	---

Origins Laboratory, Inc.



The results in this report apply to the samples analyzed in accordance with the chain of custody document. This analytical report must be reproduced in its entirety.

Eagle Environmental Consulting, LLC
8000 W 44th Ave
Wheat Ridge CO 80033

Martin C Eckert III
Project Number: [none]
Project: Noble - UPRC T4N-R67W-S23 Tank Battery

SB-05@5-7.5'

5/26/2023 9:56:00AM

Analyte	Result	Reporting Limit	Units	Dilution	Batch	Analyst	Prepared	Analyzed	Notes
---------	--------	-----------------	-------	----------	-------	---------	----------	----------	-------

Origins Laboratory, Inc.
Y305714-06 (Soil)

PAH by EPA 8270E

2-Methylnaphthalene	ND	0.002	mg/kg	1	B3E2624	agile	05/26/2023	05/31/2023	U
Acenaphthene	ND	0.020	"	"	"	agile	"	"	U
Anthracene	ND	0.020	"	"	"	agile	"	"	U
Benzo (a) anthracene	ND	0.005	"	"	"	agile	"	"	U
Benzo (a) pyrene	ND	0.020	"	"	"	agile	"	"	U
Benzo (b) fluoranthene	ND	0.020	"	"	"	agile	"	"	U
Benzo (k) fluoranthene	ND	0.020	"	"	"	agile	"	"	U
Chrysene	ND	0.020	"	"	"	agile	"	"	U
Dibenz (a,h) anthracene	ND	0.020	"	"	"	agile	"	"	U
Fluoranthene	ND	0.020	"	"	"	agile	"	"	U
Fluorene	ND	0.020	"	"	"	agile	"	"	U
Indeno (1,2,3-cd) pyrene	ND	0.020	"	"	"	agile	"	"	U
Pyrene	ND	0.020	"	"	"	agile	"	"	U

Surrogate: Nitrobenzene-d5	102 %	60-130	"	"	"
Surrogate: 2-Fluorobiphenyl	98.3 %	60-130	"	"	"
Surrogate: Terphenyl-d14	104 %	60-130	"	"	"

Origins Laboratory, Inc.



The results in this report apply to the samples analyzed in accordance with the chain of custody document. This analytical report must be reproduced in its entirety.

Eagle Environmental Consulting, LLC
8000 W 44th Ave
Wheat Ridge CO 80033

Martin C Eckert III
Project Number: [none]
Project: Noble - UPRC T4N-R67W-S23 Tank
Battery

Extractable Petroleum Hydrocarbons by 8015D - Quality Control Origins Laboratory, Inc.

Analyte	Result	Reporting Limit	Units	Spike Level	Source Result	%REC	%REC Limits	RPD	RPD Limit	Notes
Batch B3E3019 - EPA 3550B										
Blank (B3E3019-BLK1)					Prepared: 05/30/2023 Analyzed: 06/02/2023					
Diesel (C10-C28)	ND	25.0	mg/kg							U
Residual Range Organics (C28-C40)	ND	100	"							U
Surrogate: o-Terphenyl	19		"	24.9		75.6	50-150			

Origins Laboratory, Inc.



The results in this report apply to the samples analyzed in accordance with the chain of custody document. This analytical report must be reproduced in its entirety.

Eagle Environmental Consulting, LLC

8000 W 44th Ave

Wheat Ridge CO 80033

Martin C Eckert III

Project Number: [none]

Project: Noble - UPRC T4N-R67W-S23 Tank
Battery

Extractable Petroleum Hydrocarbons by 8015D - Quality Control
Origins Laboratory, Inc.

Analyte	Result	Reporting Limit	Units	Spike Level	Source Result	%REC	%REC Limits	RPD	RPD Limit	Notes
---------	--------	--------------------	-------	----------------	------------------	------	----------------	-----	--------------	-------

Batch B3E3019 - EPA 3550B

LCS (B3E3019-BS1)

Prepared: 05/30/2023 Analyzed: 06/02/2023

Diesel (C10-C28)	849	50.0	mg/kg	1000		84.9	70-130			
Residual Range Organics (C28-C40)	858	200	"	1000		85.8	70-130			
Surrogate: o-Terphenyl	43		"	49.8		86.0	50-150			

Origins Laboratory, Inc.



*The results in this report apply to the samples analyzed in
accordance with the chain of custody document. This
analytical report must be reproduced in its entirety.*

Eagle Environmental Consulting, LLC
8000 W 44th Ave
Wheat Ridge CO 80033

Martin C Eckert III
Project Number: [none]
Project: Noble - UPRC T4N-R67W-S23 Tank
Battery

Extractable Petroleum Hydrocarbons by 8015D - Quality Control Origins Laboratory, Inc.

Analyte	Result	Reporting Limit	Units	Spike Level	Source Result	%REC	%REC Limits	RPD	RPD Limit	Notes
Batch B3E3019 - EPA 3550B										
Matrix Spike (B3E3019-MS1)		Source: Y305697-01			Prepared: 05/30/2023 Analyzed: 06/02/2023					
Diesel (C10-C28)	887	50.0	mg/kg	1000	ND	88.7	70-130			
Residual Range Organics (C28-C40)	909	200	"	1000	ND	90.9	70-130			
Surrogate: o-Terphenyl	41		"	49.8		82.6	50-150			

Origins Laboratory, Inc.



The results in this report apply to the samples analyzed in accordance with the chain of custody document. This analytical report must be reproduced in its entirety.

Eagle Environmental Consulting, LLC
8000 W 44th Ave
Wheat Ridge CO 80033

Martin C Eckert III
Project Number: [none]
Project: Noble - UPRC T4N-R67W-S23 Tank
Battery

Extractable Petroleum Hydrocarbons by 8015D - Quality Control Origins Laboratory, Inc.

Analyte	Result	Reporting Limit	Units	Spike Level	Source Result	%REC	%REC Limits	RPD	RPD Limit	Notes
Batch B3E3019 - EPA 3550B										
Matrix Spike Dup (B3E3019-MSD1)		Source: Y305697-01			Prepared: 05/30/2023 Analyzed: 06/02/2023					
Diesel (C10-C28)	862	50.0	mg/kg	1000	ND	86.2	70-130	2.83	35	
Residual Range Organics (C28-C40)	899	200	"	1000	ND	89.9	70-130	1.17	35	
Surrogate: o-Terphenyl	44		"	49.8		87.5	50-150			

Origins Laboratory, Inc.



The results in this report apply to the samples analyzed in accordance with the chain of custody document. This analytical report must be reproduced in its entirety.

Eagle Environmental Consulting, LLC
8000 W 44th Ave
Wheat Ridge CO 80033

Martin C Eckert III
Project Number: [none]
Project: Noble - UPRC T4N-R67W-S23 Tank
Battery

Extractable Petroleum Hydrocarbons by 8015D - Quality Control

Origins Laboratory, Inc.

Analyte	Result	Reporting Limit	Units	Spike Level	Source Result	%REC	%REC Limits	RPD	RPD Limit	Notes
Batch B3E3027 - EPA 5030 (soil)										
Blank (B3E3027-BLK1)					Prepared: 05/30/2023 Analyzed: 05/30/2023					
1,2,4-Trimethylbenzene	ND	0.00200	mg/kg							U
1,3,5-Trimethylbenzene	ND	0.00200	"							U
Benzene	ND	0.00200	"							U
Ethylbenzene	ND	0.00200	"							U
Naphthalene	ND	0.00380	"							U
Toluene	ND	0.00200	"							U
Xylenes, total	ND	0.00200	"							U
Gasoline Range Hydrocarbons	ND	0.200	"							U
Surrogate: 1,2-Dichloroethane-d4	0.12		"	0.125		99.7	70-130			
Surrogate: Toluene-d8	0.13		"	0.125		108	70-130			
Surrogate: 4-Bromofluorobenzene	0.14		"	0.125		109	70-130			

Origins Laboratory, Inc.



The results in this report apply to the samples analyzed in accordance with the chain of custody document. This analytical report must be reproduced in its entirety.

Eagle Environmental Consulting, LLC
8000 W 44th Ave
Wheat Ridge CO 80033

Martin C Eckert III
Project Number: [none]
Project: Noble - UPRC T4N-R67W-S23 Tank
Battery

Volatile Organic Compounds by GC/MS SW846 8260D - Quality Control
Origins Laboratory, Inc.

Analyte	Result	Reporting Limit	Units	Spike Level	Source Result	%REC	%REC Limits	RPD	RPD Limit	Notes
---------	--------	-----------------	-------	-------------	---------------	------	-------------	-----	-----------	-------

Batch B3E3027 - EPA 5030 (soil)

LCS (B3E3027-BS1)

Prepared: 05/30/2023 Analyzed: 05/30/2023

1,2,4-Trimethylbenzene	0.0885	0.00200	mg/kg	0.100		88.5	70-130			
1,3,5-Trimethylbenzene	0.0896	0.00200	"	0.100		89.6	70-130			
Benzene	0.0947	0.00200	"	0.100		94.7	70-130			
Ethylbenzene	0.0995	0.00200	"	0.100		99.5	70-130			
Naphthalene	0.104	0.00380	"	0.100		104	70-130			
Toluene	0.100	0.00200	"	0.100		100	70-130			
o-Xylene	0.0898	0.00200	"	0.100		89.8	70-130			
m,p-Xylene	0.198	0.00400	"	0.200		98.8	70-130			
Surrogate: 1,2-Dichloroethane-d4	0.12		"	0.125		96.2	70-130			
Surrogate: Toluene-d8	0.13		"	0.125		107	70-130			
Surrogate: 4-Bromofluorobenzene	0.13		"	0.125		101	70-130			

Origins Laboratory, Inc.



The results in this report apply to the samples analyzed in accordance with the chain of custody document. This analytical report must be reproduced in its entirety.

Eagle Environmental Consulting, LLC
8000 W 44th Ave
Wheat Ridge CO 80033

Martin C Eckert III
Project Number: [none]
Project: Noble - UPRC T4N-R67W-S23 Tank
Battery

Volatile Organic Compounds by GC/MS SW846 8260D - Quality Control
Origins Laboratory, Inc.

Analyte	Result	Reporting Limit	Units	Spike Level	Source Result	%REC	%REC Limits	RPD	RPD Limit	Notes
Batch B3E3027 - EPA 5030 (soil)										
Matrix Spike (B3E3027-MS1)		Source: Y305714-01			Prepared: 05/30/2023 Analyzed: 05/30/2023					
1,2,4-Trimethylbenzene	0.149	0.00200	mg/kg	0.100	ND	149	70-130			QM-07
1,3,5-Trimethylbenzene	0.148	0.00200	"	0.100	ND	148	70-130			QM-07
Benzene	0.113	0.00200	"	0.100	ND	113	70-130			
Ethylbenzene	0.132	0.00200	"	0.100	ND	132	70-130			QM-07
Naphthalene	0.135	0.00380	"	0.100	ND	135	70-130			QM-07
Toluene	0.126	0.00200	"	0.100	ND	126	70-130			
o-Xylene	0.133	0.00200	"	0.100	ND	133	70-130			QM-07
m,p-Xylene	0.293	0.00400	"	0.200	ND	146	70-130			QM-07
Surrogate: 1,2-Dichloroethane-d4	0.13		"	0.125		102	70-130			
Surrogate: Toluene-d8	0.13		"	0.125		106	70-130			
Surrogate: 4-Bromofluorobenzene	0.12		"	0.125		95.6	70-130			

Origins Laboratory, Inc.



The results in this report apply to the samples analyzed in accordance with the chain of custody document. This analytical report must be reproduced in its entirety.

Eagle Environmental Consulting, LLC
8000 W 44th Ave
Wheat Ridge CO 80033

Martin C Eckert III
Project Number: [none]
Project: Noble - UPRC T4N-R67W-S23 Tank
Battery

Volatile Organic Compounds by GC/MS SW846 8260D - Quality Control
Origins Laboratory, Inc.

Analyte	Result	Reporting Limit	Units	Spike Level	Source Result	%REC	%REC Limits	RPD	RPD Limit	Notes
Batch B3E3027 - EPA 5030 (soil)										
Matrix Spike Dup (B3E3027-MSD1)		Source: Y305714-01			Prepared: 05/30/2023 Analyzed: 05/30/2023					
1,2,4-Trimethylbenzene	0.143	0.00200	mg/kg	0.100	ND	143	70-130	3.75	20	QM-07
1,3,5-Trimethylbenzene	0.141	0.00200	"	0.100	ND	141	70-130	4.38	20	QM-07
Benzene	0.109	0.00200	"	0.100	ND	109	70-130	3.34	20	
Ethylbenzene	0.130	0.00200	"	0.100	ND	130	70-130	1.22	20	
Naphthalene	0.139	0.00380	"	0.100	ND	139	70-130	2.78	20	QM-07
Toluene	0.122	0.00200	"	0.100	ND	122	70-130	3.25	20	
o-Xylene	0.129	0.00200	"	0.100	ND	129	70-130	3.20	20	
m,p-Xylene	0.285	0.00400	"	0.200	ND	143	70-130	2.60	20	QM-07
Surrogate: 1,2-Dichloroethane-d4	0.12		"	0.125		98.2	70-130			
Surrogate: Toluene-d8	0.13		"	0.125		104	70-130			
Surrogate: 4-Bromofluorobenzene	0.12		"	0.125		97.9	70-130			

Origins Laboratory, Inc.



The results in this report apply to the samples analyzed in accordance with the chain of custody document. This analytical report must be reproduced in its entirety.

Eagle Environmental Consulting, LLC
8000 W 44th Ave
Wheat Ridge CO 80033

Martin C Eckert III
Project Number: [none]
Project: Noble - UPRC T4N-R67W-S23 Tank Battery

Volatile Organic Compounds by GC/MS SW846 8260D - Quality Control
Origins Laboratory, Inc.

Analyte	Result	Reporting Limit	Units	Spike Level	Source Result	%REC	%REC Limits	RPD	RPD Limit	Notes
---------	--------	-----------------	-------	-------------	---------------	------	-------------	-----	-----------	-------

EPA 8270E (SW846) - Semivolatile Organic Compounds - Quality Control
Origins Laboratory, Inc.

Analyte	Result	Reporting Limit	Units	Spike Level	Source Result	%REC	%REC Limits	RPD	RPD Limit	Notes
---------	--------	-----------------	-------	-------------	---------------	------	-------------	-----	-----------	-------

Batch B3E2624 - EPA 3580

Blank (B3E2624-BLK1)

Prepared: 05/26/2023 Analyzed: 05/30/2023

1-Methylnaphthalene	ND	0.002	mg/kg							U
2-Methylnaphthalene	ND	0.002	"							U
Acenaphthene	ND	0.020	"							U
Anthracene	ND	0.020	"							U
Benzo (a) anthracene	ND	0.005	"							U
Benzo (a) pyrene	ND	0.020	"							U
Benzo (b) fluoranthene	ND	0.020	"							U
Benzo (g,h,i) perylene	ND	0.020	"							U
Benzo (k) fluoranthene	ND	0.020	"							U
Chrysene	ND	0.020	"							U
Dibenz (a,h) anthracene	ND	0.020	"							U
Fluoranthene	ND	0.020	"							U
Fluorene	ND	0.020	"							U
Indeno (1,2,3-cd) pyrene	ND	0.020	"							U
Naphthalene	ND	0.002	"							U
Phenanthrene	ND	0.020	"							U
Pyrene	ND	0.020	"							U

Surrogate: Nitrobenzene-d5	200		ug/kg	200		99.3	60-130
Surrogate: 2-Fluorobiphenyl	200		"	200		100	60-130
Surrogate: Terphenyl-d14	200		"	200		102	60-130

LCS (B3E2624-BS1)

Prepared: 05/26/2023 Analyzed: 05/30/2023

Origins Laboratory, Inc.



The results in this report apply to the samples analyzed in accordance with the chain of custody document. This analytical report must be reproduced in its entirety.

Eagle Environmental Consulting, LLC
8000 W 44th Ave
Wheat Ridge CO 80033

Martin C Eckert III
Project Number: [none]
Project: Noble - UPRC T4N-R67W-S23 Tank Battery

EPA 8270E (SW846) - Semivolatile Organic Compounds - Quality Control
Origins Laboratory, Inc.

Analyte	Result	Reporting Limit	Units	Spike Level	Source Result	%REC	%REC Limits	RPD	RPD Limit	Notes
---------	--------	-----------------	-------	-------------	---------------	------	-------------	-----	-----------	-------

Batch B3E2624 - EPA 3580

LCS (B3E2624-BS1)

Prepared: 05/26/2023 Analyzed: 05/30/2023

1-Methylnaphthalene	0.179	0.002	mg/kg	0.200		89.7	70-130
2-Methylnaphthalene	0.188	0.002	"	0.200		93.9	70-130
Acenaphthene	0.186	0.020	"	0.200		92.9	70-130
Anthracene	0.198	0.020	"	0.200		99.0	70-130
Benzo (a) anthracene	0.192	0.005	"	0.200		96.2	70-130
Benzo (a) pyrene	0.192	0.020	"	0.200		96.1	70-130
Benzo (b) fluoranthene	0.194	0.020	"	0.200		96.8	70-130
Benzo (g,h,i) perylene	0.197	0.020	"	0.200		98.3	70-130
Benzo (k) fluoranthene	0.193	0.020	"	0.200		96.7	70-130
Chrysene	0.195	0.020	"	0.200		97.6	70-130
Dibenz (a,h) anthracene	0.196	0.020	"	0.200		97.9	70-130
Fluoranthene	0.203	0.020	"	0.200		101	70-130
Fluorene	0.190	0.020	"	0.200		95.0	70-130
Indeno (1,2,3-cd) pyrene	0.194	0.020	"	0.200		96.9	70-130
Naphthalene	0.196	0.002	"	0.200		97.9	70-130
Phenanthrene	0.187	0.020	"	0.200		93.3	70-130
Pyrene	0.197	0.020	"	0.200		98.4	70-130

Surrogate: Nitrobenzene-d5	200		ug/kg	200		99.8	60-130
Surrogate: 2-Fluorobiphenyl	200		"	200		101	60-130
Surrogate: Terphenyl-d14	200		"	200		99.7	60-130

Matrix Spike (B3E2624-MS1)

Source: Y305706-01

Prepared: 05/26/2023 Analyzed: 05/31/2023

1-Methylnaphthalene	0.185	0.002	mg/kg	0.200	ND	92.7	70-130
2-Methylnaphthalene	0.192	0.002	"	0.200	ND	95.8	70-130
Acenaphthene	0.187	0.020	"	0.200	ND	93.6	70-130
Anthracene	0.201	0.020	"	0.200	ND	101	70-130
Benzo (a) anthracene	0.203	0.005	"	0.200	ND	102	70-130

Origins Laboratory, Inc.



The results in this report apply to the samples analyzed in accordance with the chain of custody document. This analytical report must be reproduced in its entirety.

Eagle Environmental Consulting, LLC
8000 W 44th Ave
Wheat Ridge CO 80033

Martin C Eckert III
Project Number: [none]
Project: Noble - UPRC T4N-R67W-S23 Tank Battery

EPA 8270E (SW846) - Semivolatile Organic Compounds - Quality Control
Origins Laboratory, Inc.

Analyte	Result	Reporting Limit	Units	Spike Level	Source Result	%REC	%REC Limits	RPD	RPD Limit	Notes
---------	--------	-----------------	-------	-------------	---------------	------	-------------	-----	-----------	-------

Batch B3E2624 - EPA 3580

Matrix Spike (B3E2624-MS1)		Source: Y305706-01			Prepared: 05/26/2023 Analyzed: 05/31/2023					
Benzo (a) pyrene	0.193	0.020	mg/kg	0.200	ND	96.4	70-130			
Benzo (b) fluoranthene	0.187	0.020	"	0.200	ND	93.6	70-130			
Benzo (g,h,i) perylene	0.191	0.020	"	0.200	ND	95.5	70-130			
Benzo (k) fluoranthene	0.195	0.020	"	0.200	ND	97.5	70-130			
Chrysene	0.195	0.020	"	0.200	ND	97.7	70-130			
Dibenz (a,h) anthracene	0.201	0.020	"	0.200	ND	100	70-130			
Fluoranthene	0.197	0.020	"	0.200	ND	98.4	70-130			
Fluorene	0.187	0.020	"	0.200	ND	93.3	70-130			
Indeno (1,2,3-cd) pyrene	0.194	0.020	"	0.200	ND	97.2	70-130			
Naphthalene	0.199	0.002	"	0.200	ND	99.7	70-130			
Phenanthrene	0.188	0.020	"	0.200	ND	93.9	70-130			
Pyrene	0.206	0.020	"	0.200	ND	103	70-130			
Surrogate: Nitrobenzene-d5	200		ug/kg	200		101	60-130			
Surrogate: 2-Fluorobiphenyl	210		"	200		103	60-130			
Surrogate: Terphenyl-dl4	210		"	200		106	60-130			

Matrix Spike Dup (B3E2624-MSD1)		Source: Y305706-01			Prepared: 05/26/2023 Analyzed: 05/31/2023					
1-Methylnaphthalene	0.191	0.002	mg/kg	0.200	ND	95.6	70-130	3.06	20	
2-Methylnaphthalene	0.195	0.002	"	0.200	ND	97.7	70-130	1.99	20	
Acenaphthene	0.191	0.020	"	0.200	ND	95.4	70-130	1.89	20	
Anthracene	0.194	0.020	"	0.200	ND	96.9	70-130	3.75	20	
Benzo (a) anthracene	0.200	0.005	"	0.200	ND	100	70-130	1.65	20	
Benzo (a) pyrene	0.204	0.020	"	0.200	ND	102	70-130	5.44	20	
Benzo (b) fluoranthene	0.195	0.020	"	0.200	ND	97.7	70-130	4.28	20	
Benzo (g,h,i) perylene	0.207	0.020	"	0.200	ND	104	70-130	8.02	20	
Benzo (k) fluoranthene	0.215	0.020	"	0.200	ND	107	70-130	9.70	20	
Chrysene	0.198	0.020	"	0.200	ND	99.1	70-130	1.34	20	

Origins Laboratory, Inc.



The results in this report apply to the samples analyzed in accordance with the chain of custody document. This analytical report must be reproduced in its entirety.

Eagle Environmental Consulting, LLC
8000 W 44th Ave
Wheat Ridge CO 80033

Martin C Eckert III
Project Number: [none]
Project: Noble - UPRC T4N-R67W-S23 Tank
Battery

EPA 8270E (SW846) - Semivolatile Organic Compounds - Quality Control
Origins Laboratory, Inc.

Analyte	Result	Reporting Limit	Units	Spike Level	Source Result	%REC	%REC Limits	RPD	RPD Limit	Notes
Batch B3E2624 - EPA 3580										
Matrix Spike Dup (B3E2624-MSD1)		Source: Y305706-01			Prepared: 05/26/2023 Analyzed: 05/31/2023					
Dibenz (a,h) anthracene	0.212	0.020	mg/kg	0.200	ND	106	70-130	5.41	20	
Fluoranthene	0.202	0.020	"	0.200	ND	101	70-130	2.56	20	
Fluorene	0.194	0.020	"	0.200	ND	97.1	70-130	4.02	20	
Indeno (1,2,3-cd) pyrene	0.204	0.020	"	0.200	ND	102	70-130	4.99	20	
Naphthalene	0.201	0.002	"	0.200	ND	101	70-130	0.926	20	
Phenanthrene	0.195	0.020	"	0.200	ND	97.4	70-130	3.70	20	
Pyrene	0.203	0.020	"	0.200	ND	101	70-130	1.53	20	
Surrogate: Nitrobenzene-d5	190		ug/kg	200		97.2	60-130			
Surrogate: 2-Fluorobiphenyl	210		"	200		105	60-130			
Surrogate: Terphenyl-dl4	200		"	200		102	60-130			

Origins Laboratory, Inc.



The results in this report apply to the samples analyzed in accordance with the chain of custody document. This analytical report must be reproduced in its entirety.

Eagle Environmental Consulting, LLC

8000 W 44th Ave

Wheat Ridge CO 80033

Martin C Eckert III

Project Number: [none]

Project: Noble - UPRC T4N-R67W-S23 Tank
Battery

Notes and Definitions

U Sample is Non-Detect.

QM-07 The spike recovery was outside acceptance limits for the MS and/or MSD. The batch was accepted based on acceptable LCS recovery.

ND Analyte NOT DETECTED at or above the reporting limit

RPD Relative Percent Difference

All soil results are reported at a wet weight basis.

Origins Laboratory, Inc.



The results in this report apply to the samples analyzed in accordance with the chain of custody document. This analytical report must be reproduced in its entirety.