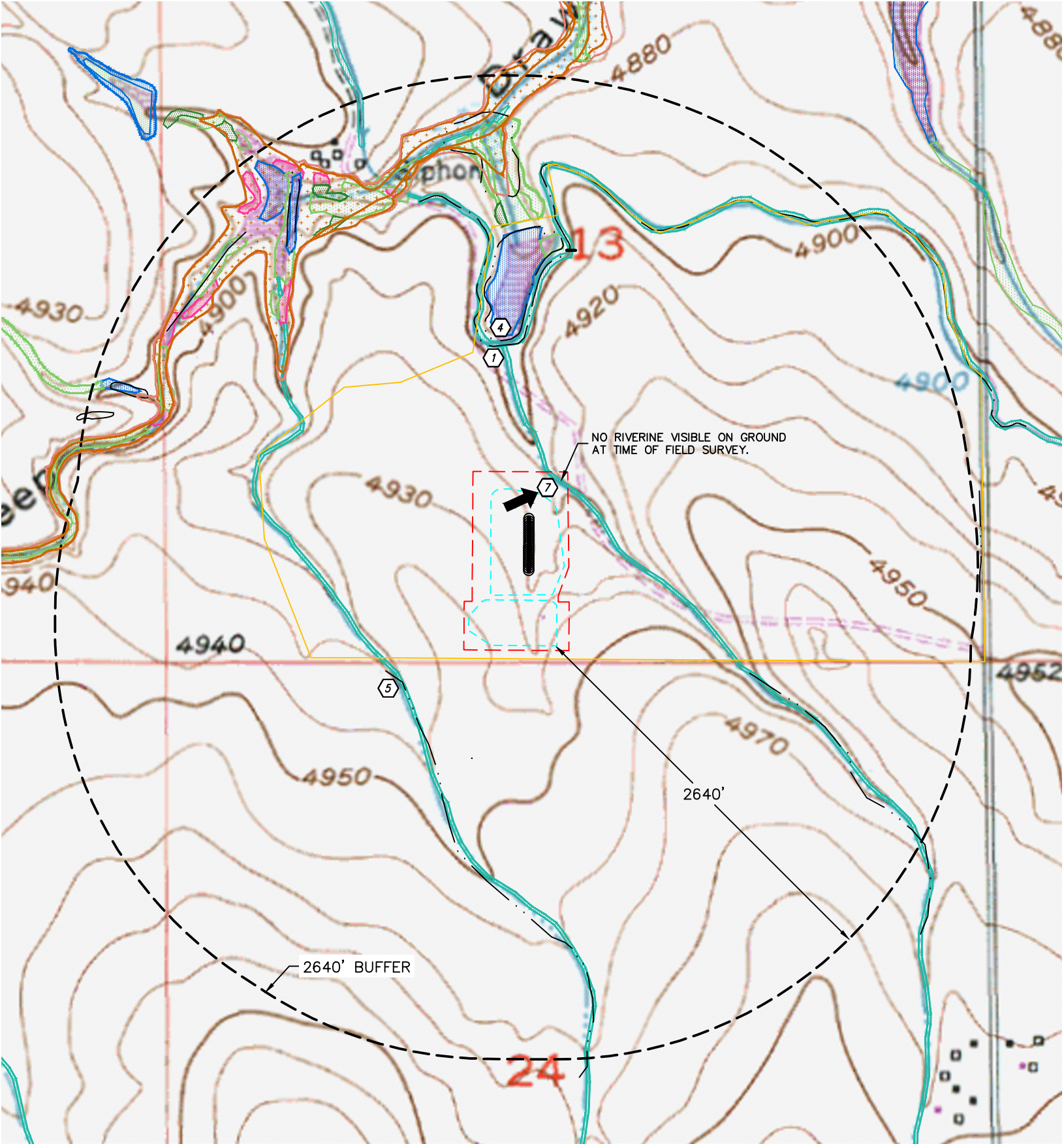




Lat40°, Inc. 6250 W. 10th Street, Unit 2, Greeley, CO 970-515-5294

HYDROLOGY MAP
DENALI STATE 5N67W13 1-23 PAD
PDC ENERGY

Q-Q: SESW
SECTION: 13
TOWNSHIP: 5N
RANGE: 67W
6TH. P.M.
WELD COUNTY, CO



ID	SURFACE WATER	DISTANCES/BEARING (MEASURED FROM WORKING PAD SURFACE)
1	MAJOR DITCH/CANAL	912' NW, 2284' NW
2	RIVER	NA
3	BORROW DITCH	NA
4	POND	945' N
5	LOW AREA	535' SW, 1240' SE, 1865' N, 2000' NW, 2286' NW, 2476' NW
6	DITCH	NA
7	WETLANDS (USGS WETLANDS MAPPER)	128' NE, 523' SW, 979' N, 1495' NE, 1675' N, 1688' N, 1714' NW, 1880' NW, 1926' NW, 1932' NW, 1958' NW, 1961' NW, 2006' NW, 2114' NW, 2115' NW, 2184' NW, 2212' NW, 2220' NW, 2240' NW, 2243' NW, 2344' NW, 2346' NW, 2354' NW, 2365' NW, 2570' NW
8	MISCELLANEOUS	NA
9	PUBLIC WATER SYSTEM FACILITIES	NA
10	RULE 411 BUFFER	NA
11	SURFACE WATERS THAT ARE 15 STREAM MILES UPSTREAM OF A PUBLIC WATER SYSTEM INTAKE	YES

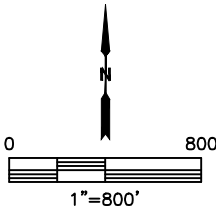
WORKING PAD SURFACE LOCATED IN FLOOD ZONE X

- LEGEND
- SURFACE PROPERTY
 - WORKING PAD SURFACE
 - OIL AND GAS LOCATION
 - PROPOSED WELL
 - ID DESIGNATION
 - DOWNGRADIENT
 - RIPARIAN
 - FRESHWATER POND
 - RIVERINE
 - FRESHWATER EMERGENT WETLAND
 - FRESHWATER FORESTED SHRUB WETLAND
 - FLOOD ZONE AE
 - FLOOD ZONE X-.2% ANNUAL CHANCE OF FLOOD
 - FLOOD ZONE AE FLOODWAY
 - WATER WELL (FIELD LOCATED) **NONE FOUND WITHIN SURFACE PROPERTY
 - WATER WELL (GIS DATA)

NO SEEP OR SPRING IDENTIFIED WITHIN 1 MILE BUFFER AS MEASURED FROM WORKING PAD SURFACE.

DATA SOURCE: COGCC, CNHP, FEMA

NOTE:
VISIBLE SURFACE WATER SHOWN AND LISTED HEREON THAT ARE LYING OUTSIDE THE SURFACE PROPERTY MAY HAVE BEEN OBTAINED FROM THE AERIAL PHOTO AND OTHER PUBLICLY AVAILABLE DATA. THE ACCURACY AND COMPLETENESS OF SAID IMPROVEMENTS MAY NOT HAVE BEEN VERIFIED BY LAT40, INC. EXISTING CONDITIONS MAY DIFFER FROM WHAT IS SHOWN.

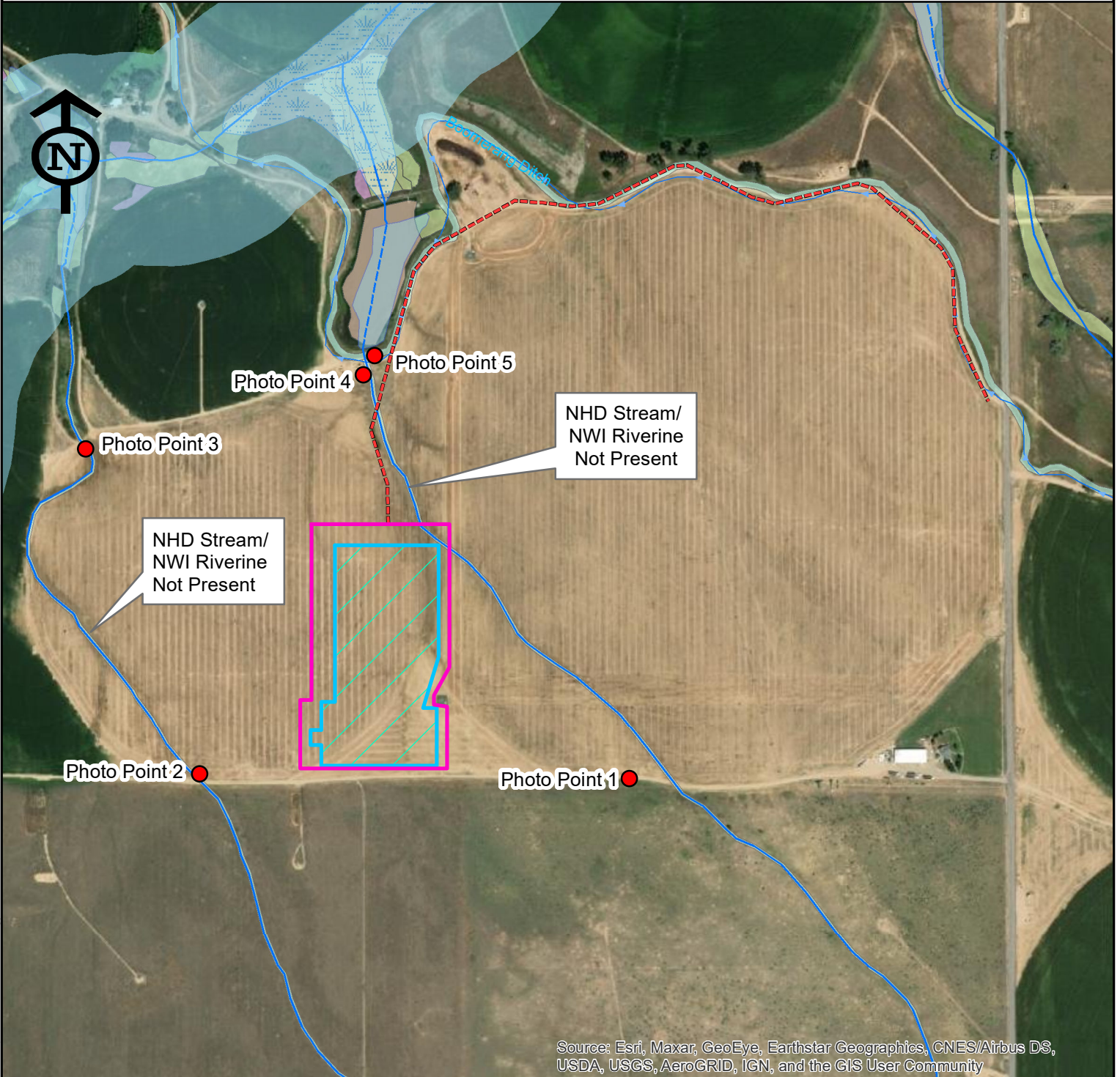


DATE: 6/16/2022
PROJECT#: 2021001

(3301-23) Denali State 1-23 Pad

SECTION 13, TOWNSHIP 5N, RANGE 67W, 6TH P.M. WELD COUNTY, CO

Map Location: X:\PDC Energy\3301-23 Denali State\Maps\Environmental Maps\3301-23 Denali State 1-23 Pad 2-11011.mxd



Source: Esri, Maxar, GeoEye, Earthstar Geographics, CNES/Airbus DS, USDA, USGS, AeroGRID, IGN, and the GIS User Community

- | | |
|-------------------------------------------|----------------------------------------------|
| Disturbance Area | NHD Mapped Lake/Pond |
| Working Pad Surface | NHD Mapped Swampmarsh |
| Access Road | NWI Mapped Freshwater Emergent Wetland |
| Aquatic Native Species Conservation Water | NWI Mapped Freshwater Forested/Shrub Wetland |
| NHD Mapped Ditch | NWI Mapped Freshwater Pond |
| NHD Mapped Stream | NWI Mapped Riverine |
| NHD Mapped Artificial Path | |

PREPARED BY:



7674 Grandview Ave., Ste. 210
Arvada, CO 80002

0 500 1,000
 Feet

SOURCES:
Project Features, 2DOT 2021
and PDC 2021

PREPARED FOR:



Projection: Nad83 UTM 13N Date: 10/11/2021
Drafted By: MC Reviewed By: SJ

Environmental Map
Figure 1



Photo Point 1. No riverine feature observed. Localized depression is visible.



Photo Point 2. No riverine feature observed. Surface is gentle westward facing slope.



Photo Point 3. Culvert observed and appears to convey water under agricultural road. Potential wetlands are located north of Photo Point 3, in the uncultivated drainage. No wetlands or riverine features observed south of Photo Point 3.



Photo Point 4. No riverine or wetland features observed. Both riverine and wetland features are present immediately south of Photo Point 4, see Photo Point 5.



Photo Point 5. Riverine and wetland feature present (i.e., Boomerang Ditch) is present.
Surface water was observed in the Ditch.