



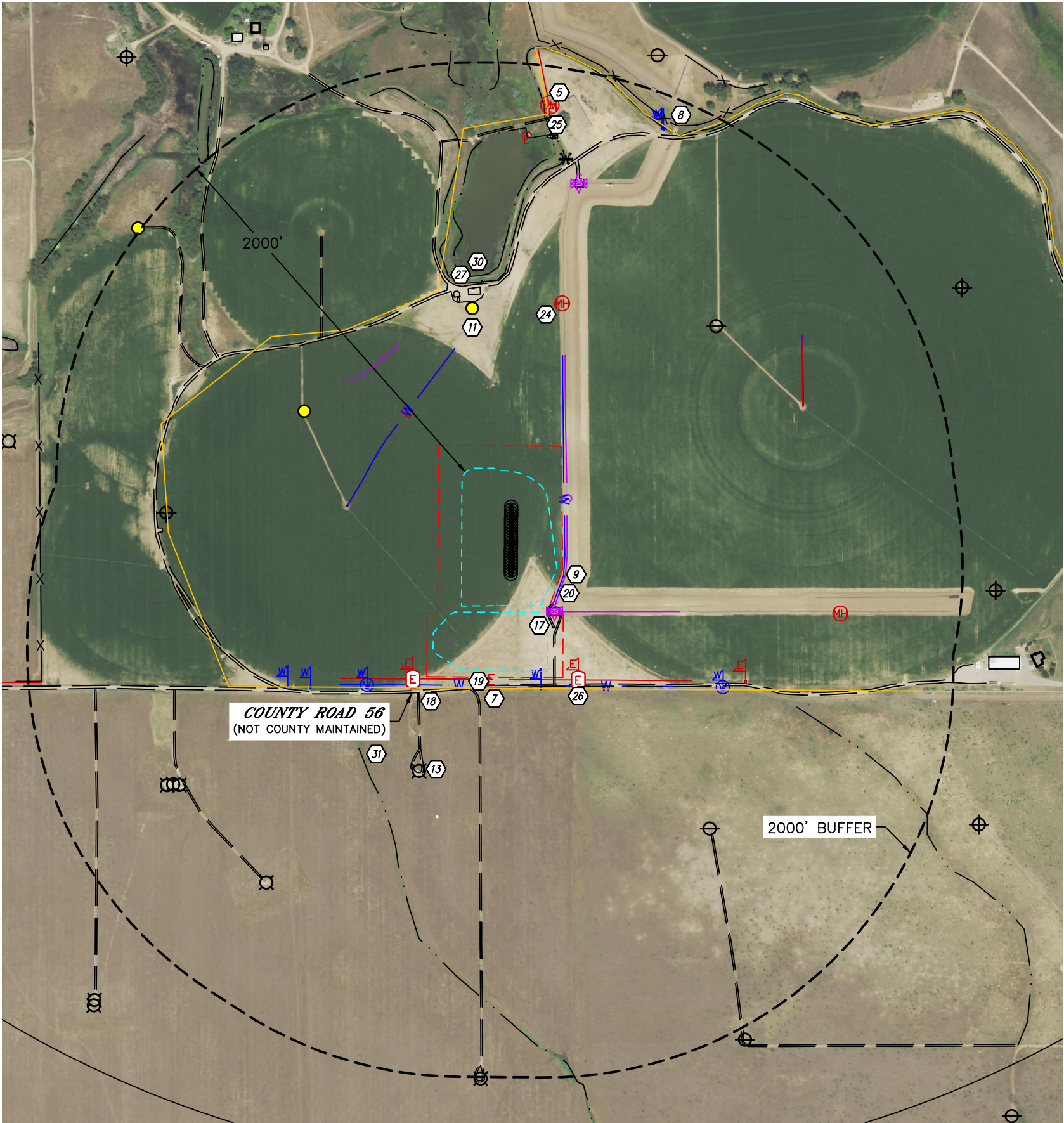
Lat40°, Inc. 6250 W. 10th Street, Unit 2, Greeley, CO 970-515-5294

LOCATION DRAWING

DENALI STATE 5N67W13 1-23 PAD

PDC ENERGY

Q-Q: SESW
SECTION: 13
TOWNSHIP: 5N
RANGE: 67W
6TH. P.M.
WELD COUNTY, CO



- SURFACE PROPERTY

WORKING PAD SURFACE

OIL AND GAS LOCATION

W

WATER LINE

G

GAS LINE

T

TELEPHONE LINE

E

UNDERGROUND ELECTRIC

OHU

OVERHEAD UTILITY

FO

FIBER OPTIC LINE

X

FENCE

●

PROPOSED WELL

X

ID DESIGNATION

B

BUILDING

BU

BUILDING UNIT

RBU

RESIDENTIAL BUILDING UNIT
- W

WATER MARKER

W

WATER MANHOLE

G

GAS MARKER

G

GAS VALVE

E

ELECTRIC VAULT

E

ELECTRIC SERVICE

EH

ELECTRIC MANHOLE

EM

UTILITY MANHOLE

EM

ELECTRIC MARKER

W

IRRIGATION VALVE

W

WOOD POST

DATA SOURCE: COGCC

NOTE:
1. SEE HYDROLOGY MAP FOR SURFACE WATER IMPROVEMENTS.
2. VISIBLE IMPROVEMENTS SHOWN AND LISTED HEREON THAT ARE LYING OUTSIDE THE SURFACE PROPERTY MAY HAVE BEEN OBTAINED FROM THE AERIAL PHOTO AND OTHER PUBLICLY AVAILABLE DATA. THE ACCURACY AND COMPLETENESS OF SAID IMPROVEMENTS MAY NOT HAVE BEEN VERIFIED BY LAT40, INC. EXISTING CONDITIONS MAY DIFFER FROM WHAT IS SHOWN.

- PRODUCING OIL & GAS WELL
- ⊙

SHUT IN OIL & GAS WELL
- ⊙

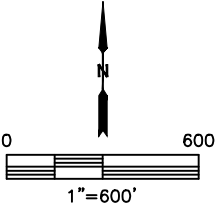
TEMPORARY ABANDONED OIL & GAS WELL
- ⊙

INJECTION WELL
- ⊙

PLUGGED AND ABANDONED OIL & GAS WELL
- ⊙

DRILLED AND ABANDONED OIL & GAS WELL
- ★

DRILLING OIL & GAS WELL
- WATER WELL (GIS DATA)





Lat40°, Inc. 6250 W. 10th Street, Unit 2, Greeley, CO 970-515-5294

LOCATION DRAWING

DENALI STATE 5N67W13 1-23 PAD

PDC ENERGY

Q-Q: SESW
SECTION: 13
TOWNSHIP: 5N
RANGE: 67W
6TH. P.M.
WELD COUNTY, CO

ID	IMPROVEMENT	DISTANCES/BEARING (MEASURED FROM WORKING PAD SURFACE)
B	BUILDINGS	NA
BU/RBU	BUILDING UNIT/RESIDENTIAL BUILDING UNITS	NA
1	HIGH OCCUPANCY BUILDING UNITS	NA
2	SCHOOL FACILITY	NA
3	DESIGNATED OUTSIDE ACTIVITY AREA	NA
4	PUBLIC ROAD	NA
5	ABOVE GROUND UTILITY	1811' NE, 1942' SW
6	RAILROAD	NA
7	PROPERTY LINE	84' S, 875' NW,
8	FENCES	1435' NE, 1879' NE, 1930' W
9	PIPELINES/PIPELINE MARKERS/FLOWLINE	46' SE, 52' NE, 71' NE, 694' NW, 1461' NE
10	MINES	NA
11	PRODUCING/DRILLING OIL AND GAS WELLS, EXISTING WORKING PAD SURFACE	788' N, 821' NW, 850' NW
12	INJECTION WELLS AND FACILITIES	NA
13	PLUGGED/ABANDONED/SHUT IN OIL AND GAS WELLS	538' SW, 1113' SE, 1168' NE, 1402' SW, 1412' SW, 1437' SW, 1456' W, 1465' SW
14	WATER WELLS - GIS DATA	NA
15	WATER WELLS - SURVEYED LOCATION	NA
16	SEWER/SEPTIC MANHOLES	NA
17	PRIVATE ROAD	10' NE, 62' S, 770' SW, 845' NW, 897' N, 968' NW, 1482' NE, 1615' NW, 1337' NW
18	EXISTING OIL AND GAS ACCESS	89' S, 206' SW, 1284' SW, 1381' NW, 1671' SW, 1137' SE
19	UTILITIES - ELECTRIC	40' S, 156' SE, 167' SW, 410' NW, 972' SE, 1646' NE, 1795' NE, 1812' NE
20	UTILITIES - WATER	43' SE, 70' S, 73' S, 364' SW, 410' NW, 628' SW, 736' SW, 867' SE, 1338' NE, 1836' NE
21	UTILITIES - TELEPHONE	NA
22	UTILITIES - FIBER OPTIC	NA
23	UTILITIES - PROPANE TANK	NA
24	UTILITIES - OTHER	865' NE, 1449' E (UTILITY MANHOLE), 1662' NE (IRRIGATION VALVE)
25	BRIDGES	1733' NE
26	MISCELLANEOUS	152' SE, 162' SW, 914' N, 972' SE, 1563' NE, 1651' NE (CONCRETE STRUCTURE), 1563' NE (WOOD POST)
27	MAJOR DITCH/CANAL	912' NW
28	RIVER	NA
29	BORROW DITCH	NA
30	POND	945' N
31	LOW AREA	535' SW, 1240' SE, 1865' N, 2000' NW
32	DITCH	NA