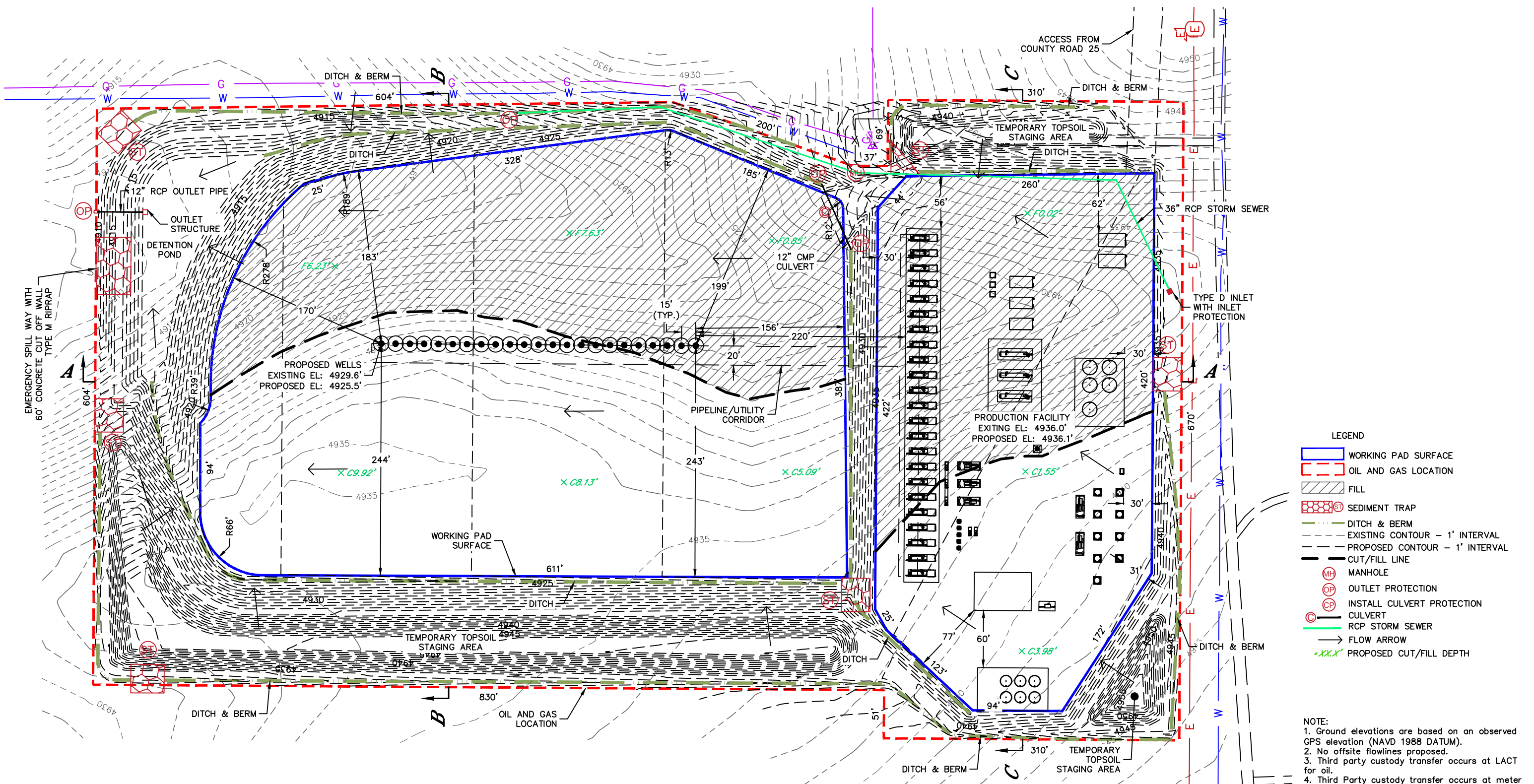


Lat40°, Inc. 6250 W. 10th Street, Unit 2, Greeley, CO 970-515-5294
CONSTRUCTION LAYOUT DRAWINGS - PLAN VIEW
 DENALI STATE 5N67W13 1-23 PAD
 PDC ENERGY

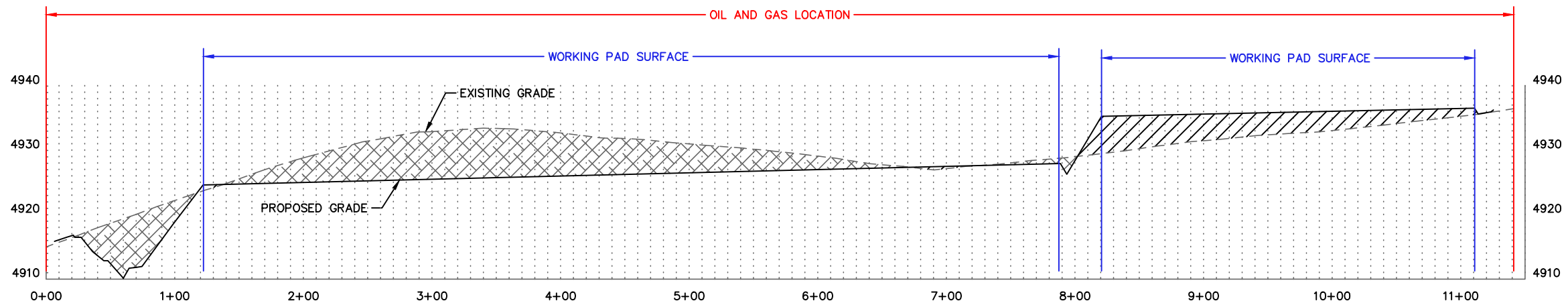
Q-Q: SESW
 SECTION: 13
 TOWNSHIP: 5N
 RANGE: 67W
 6TH. P.M.
 WELD COUNTY, CO



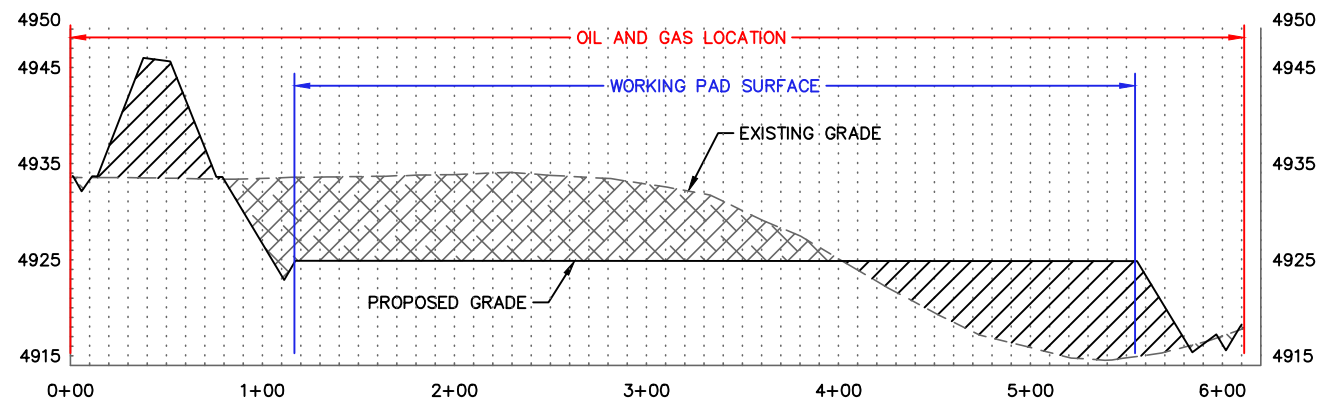


Lat40°, Inc. 6250 W. 10th Street, Unit 2, Greeley, CO 970-515-5294
CONSTRUCTION LAYOUT DRAWINGS - CROSS-SECTIONS
DENALI STATE 5N67W13 1-23 PAD
PDC ENERGY

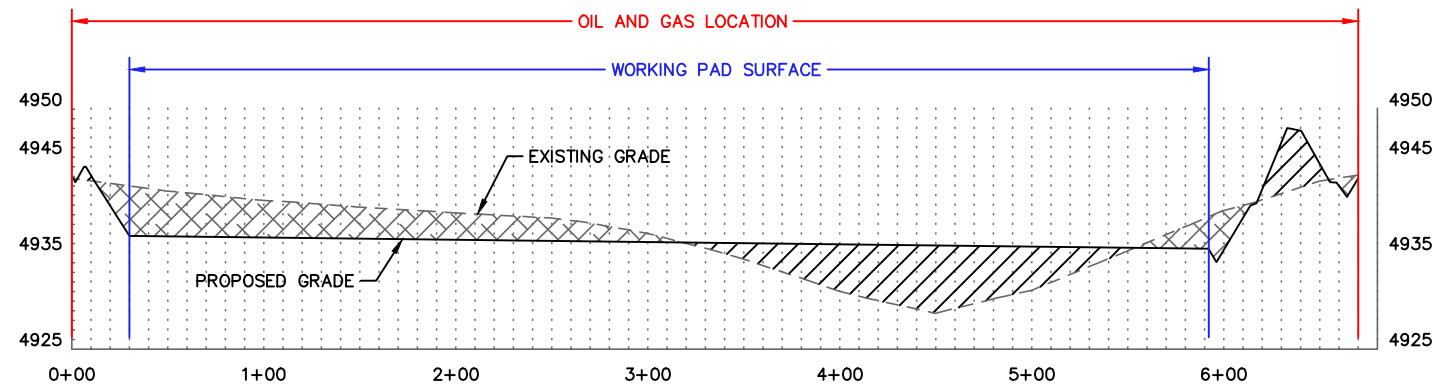
Q-Q: SESW
SECTION: 13
TOWNSHIP: 5N
RANGE: 67W
6TH. P.M.
WELD COUNTY, CO



A-A LOOKING EAST



B-B LOOKING NORTH



C-C LOOKING NORTH

- LEGEND
- FILL
 - CUT
 - WORKING PAD SURFACE
 - OIL AND GAS LOCATION

HORIZONTAL SCALE: 1"=100', VERTICAL SCALE: 1"=20'

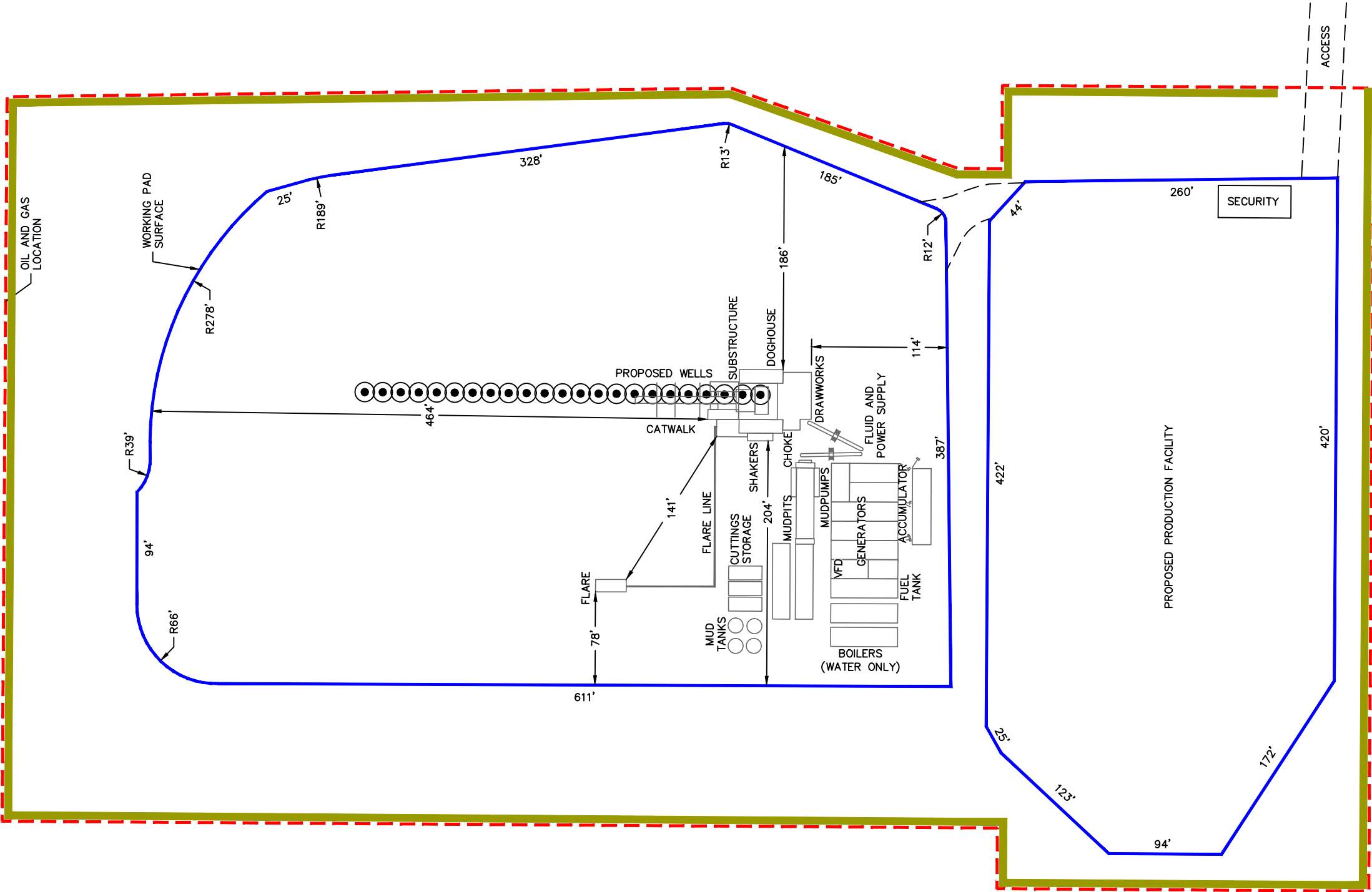


Lat40°, Inc. 6250 W. 10th Street, Unit 2, Greeley, CO 970-515-5294

PRELIMINARY RIG LAYOUT DRAWING

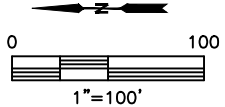
DENALI STATE 5N67W13 1-23 PAD
PDC ENERGY

Q-Q: SESW
SECTION: 13
TOWNSHIP: 5N
RANGE: 67W
6TH. P.M.
WELD COUNTY, CO



NOTES:
LAYOUTS SHOWN HEREON ARE SUBJECT TO CHANGES DUE TO EQUIPMENT AVAILABILITY AND TECHNOLOGY CHANGES.

LEGEND
WORKING PAD SURFACE
OIL AND GAS LOCATION



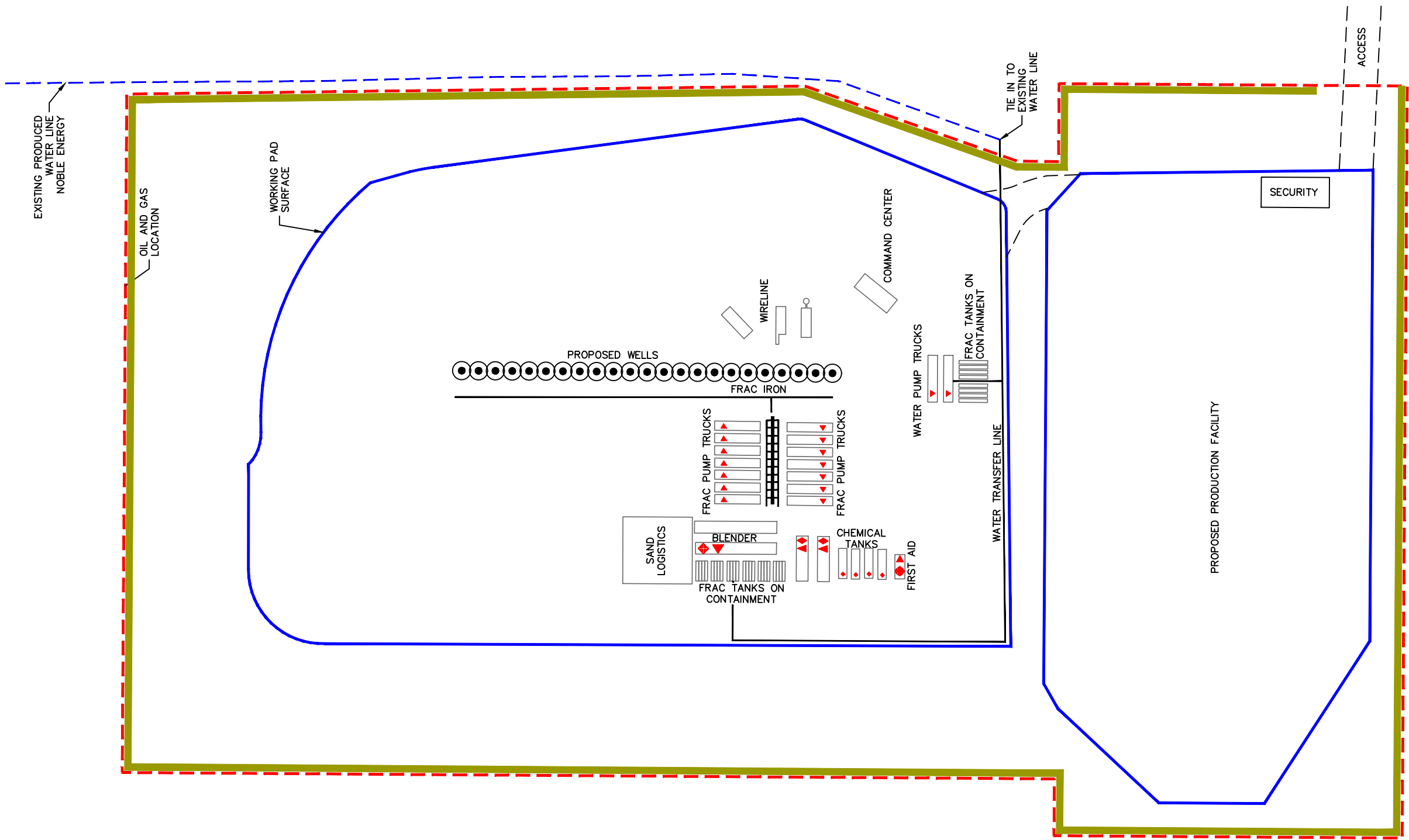


Lat40°, Inc. 6250 W. 10th Street, Unit 2, Greeley, CO 970-515-5294

PRELIMINARY WELL COMPLETION AND STIMULATION LAYOUT DRAWING

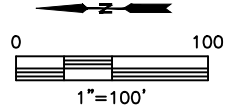
DENALI STATE 5N67W13 1-23 PAD
PDC ENERGY

Q-Q: SESW
SECTION: 13
TOWNSHIP: 5N
RANGE: 67W
6TH. P.M.
WELD COUNTY, CO



NOTES:
LAYOUTS SHOWN HEREON ARE SUBJECT TO CHANGES DUE TO EQUIPMENT AVAILABILITY AND TECHNOLOGY CHANGES.

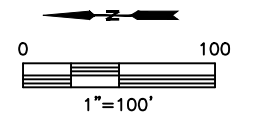
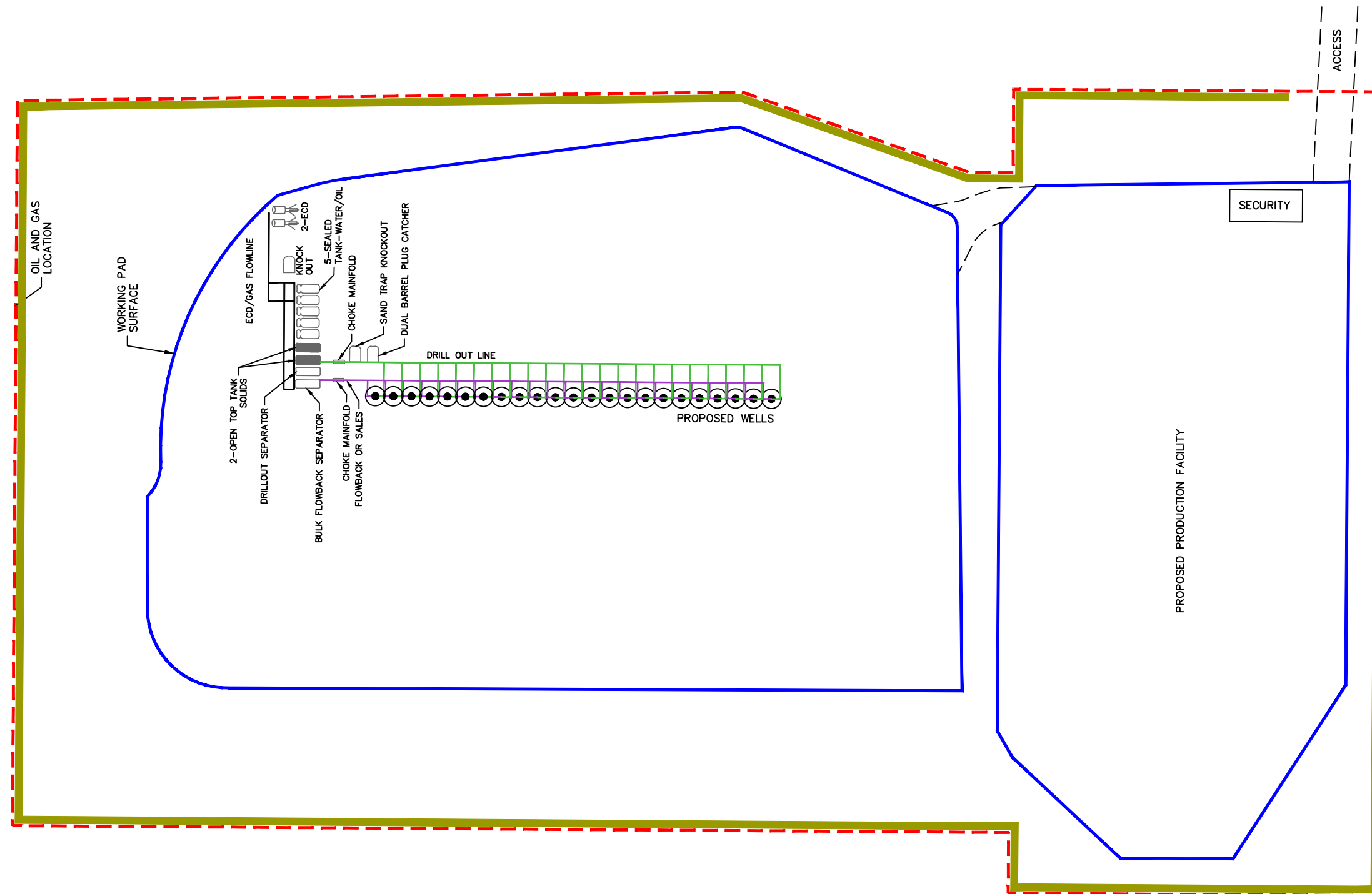
LEGEND
WORKING PAD SURFACE
OIL AND GAS LOCATION





Lat40°, Inc. 6250 W. 10th Street, Unit 2, Greeley, CO 970-515-5294
PRELIMINARY FLOWBACK EQUIPMENT LAYOUT DRAWING
DENALI STATE 5N67W13 1-23 PAD
PDC ENERGY

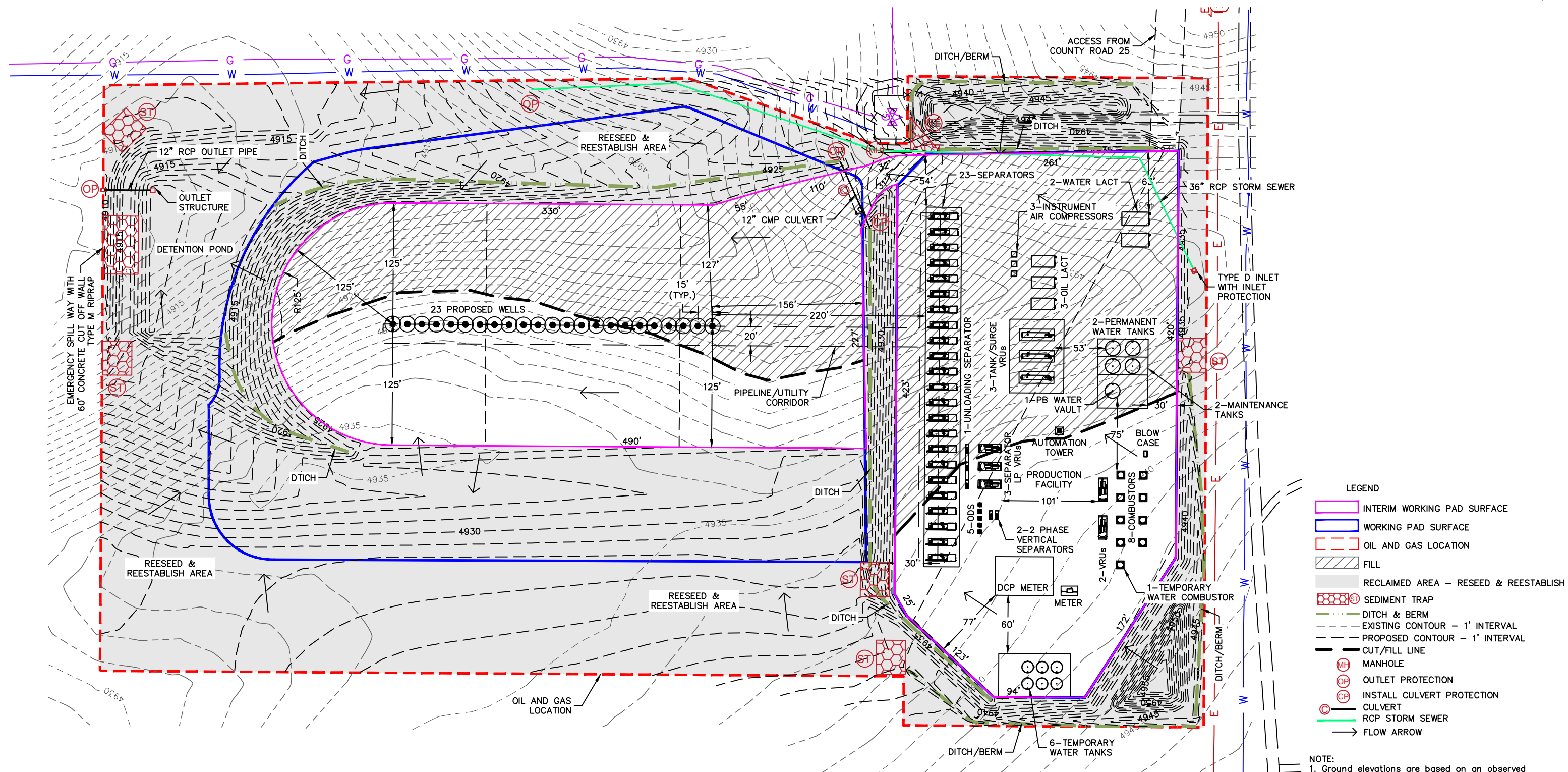
Q-Q: SESW
SECTION: 13
TOWNSHIP: 5N
RANGE: 67W
6TH. P.M.
WELD COUNTY, CO



OIL AND GAS FACILITIES LAYOUT DRAWING

DENALI STATE 5N67W13 1-23 PAD
PDC ENERGY

Q-Q: SESW
SECTION: 13
TOWNSHIP: 5N
RANGE: 67W
6TH. P.M.
WELD COUNTY, CO



NOTE:
1. Ground elevations are based on an observed GPS elevation (NAVD 1988 DATUM).
2. All equipment is PROPOSED unless otherwise noted.



SEE PROPOSED GRADING PLAN FOR ADDITIONAL
INFORMATION AS PREPARED BY OTHERS

OIL AND GAS LOCATION: ±16.2 ACRES
RECLAIMED AREA: ±9.3 ACRES
UNRECLAIMED AREA: ±6.9 ACRES