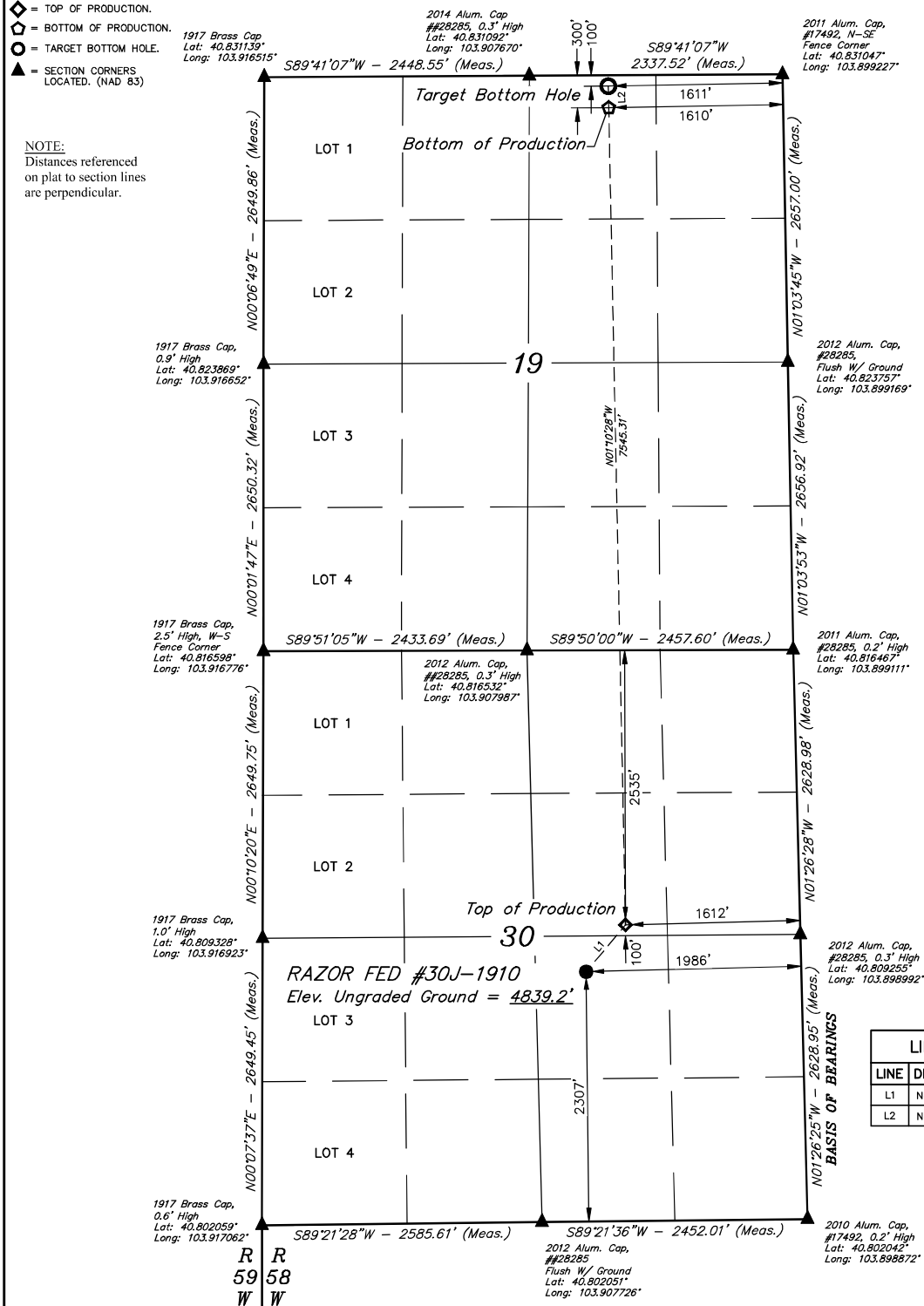


T10N, R58W, 6th P.M.

● = PROPOSED WELLHEAD.
 ◆ = TOP OF PRODUCTION.
 ⬠ = BOTTOM OF PRODUCTION.
 ○ = TARGET BOTTOM HOLE.
 ▲ = SECTION CORNERS
 LOCATED. (NAD 83)

NOTE:
Distances referenced
on plat to section lines
are perpendicular.



LINE TABLE		
LINE	DIRECTION	LENGTH
L1	N40°00'25"E	564.72'
L2	N01°10'28"W	200.02'

PDOP = 1.3



NAD 83 (SURFACE LOCATION)	NAD 83 (TOP OF PRODUCTION)	NAD 83 (BOTTOM OF PRODUCTION)	NAD 83 (TARGET BOTTOM HOLE)
LATITUDE = 40°48'30.16" (40.808378°)	LATITUDE = 40°48'34.39" (40.809553°)	LATITUDE = 40°49'48.92" (40.82055°)	LATITUDE = 40°49'50.89" (40.830084°)
LONGITUDE = 103°54'22.14" (103.906150°)	LONGITUDE = 103°54'17.35" (103.904819°)	LONGITUDE = 103°54'18.13" (103.905037°)	LONGITUDE = 103°54'18.15" (103.905043°)
NAD 27 (SURFACE LOCATION)	NAD 27 (TOP OF PRODUCTION)	NAD 27 (BOTTOM OF PRODUCTION)	NAD 27 (TARGET BOTTOM HOLE)
LATITUDE = 40°48'30.21" (40.808392°)	LATITUDE = 40°48'34.44" (40.809567°)	LATITUDE = 40°49'48.97" (40.82066°)	LATITUDE = 40°49'50.94" (40.830188°)
LONGITUDE = 103°54'20.33" (103.905647°)	LONGITUDE = 103°54'15.54" (103.904316°)	LONGITUDE = 103°54'16.32" (103.904534°)	LONGITUDE = 103°54'16.34" (103.904540°)

BASIS OF BEARINGS
BASIS OF BEARINGS IS A G.P.S. OBSERVATION.

BASIS OF ELEVATION

SPOT ELEVATION LOCATED AT THE NORTHEAST CORNER OF SECTION 15, T9N, R58W, 6th P.M. TAKEN FROM THE GATEHOOK SPRING, QUADRANGLE, COLORADO, WELD COUNTY, 7.5 MINUTE QUAD (TOPOGRAPHIC MAP) PUBLISHED BY THE UNITED STATES DEPARTMENT OF THE INTERIOR, GEOLOGICAL SURVEY. SAID ELEVATION IS MARKED AS BEING 4679 FEET.



UELS, LLC
Corporate Office * 85 South 200 East
Vernal, UT 84078 * (435) 789-1017



CERTIFICATE
THIS IS TO CERTIFY THAT THE ABOVE WAS PREPARED FROM FIELD
NOTES OF ACTUAL SURVEYS MADE IN ACCORDANCE WITH THE
AND THAT THE SAME ARE TRUE AND CORRECT TO THE BEST OF MY
KNOWLEDGE AND BELIEF.

REGISTERED LAND SURVEYOR
REGISTRATION NO. 28285
STATE OF COLORADO

**FUNDARE RESOURCES
OPERATING COMPANY, LLC**

RAZOR FED #30J-1910
NW 1/4 SE 1/4, SECTION 30, T10N, R58W, 6th P.M.
WELD COUNTY, COLORADO

SURVEYED BY	C.J.	10-20-15	SCALE
DRAWN BY	D.R.B.	02-27-23	1" = 1000'

WELL LOCATION PLAT