

FUNDARE RESOURCES OPERATING COMPANY, LLC

**WELD COUNTY
SEC 10-T10N-R58W
RAZOR 10E-0308**

OWB

Plan: PROPOSAL 1

Standard Planning Report

30 April, 2023

Project: WELD COUNTY
Site: SEC 10-T10N-R58W
Well: RAZOR 10E-0308
Wellbore: OWB
Design: PROPOSAL 1

PROJECT DETAILS: WELD COUNTY
Geodetic System: US State Plane 1983
Datum: North American Datum 1983
Ellipsoid: GRS 1980
Zone: Colorado Northern Zone
System Datum: Mean Sea Level



Azimuths to True North
Magnetic North: 7.21°
Magnetic Field
Strength: 52080.3nT
Dip Angle: 67.06°
Date: 4/29/2023
Model: IGRF2020

WELL DETAILS: RAZOR 10E-0308

		5027.00					
+N/-S	+E/-W	Northing	Easting	Latitude	Longitude	Slot	
0.00	0.00	1558202.44	3454029.30	40.854108°N	103.858706°W		

FORMATION TOP DETAILS

No formation data is available

SECTION DETAILS

Sec	MD	Inc	Azi	TVD	+N/-S	+E/-W	Dleg	TFace	VSec	Target
1	0.00	0.00	0.00	0.00	0.00	0.00	0.00	0.00	0.00	
2	200.00	0.00	0.00	200.00	0.00	0.00	0.00	0.00	0.00	
3	1998.64	35.97	103.46	1982.78	-127.17	531.32	2.00	103.46	112.08	
4	6766.87	35.97	103.46	5741.69	-779.15	3255.24	0.00	0.00	686.66	
5	7747.82	90.00	359.59	6276.00	-209.22	3627.67	10.00	-101.30	1361.08	LP-RAZOR 10E-0308
6	15314.74	90.00	359.59	6276.00	7357.51	3573.45	0.00	0.00	8178.93	BPZ-RAZOR 10E-0308
7	15315.01	90.00	359.59	6276.00	7357.77	3573.45	2.00	90.00	8179.18	PBHL-RAZOR 10E-0308
8	15514.41	90.00	359.59	6276.00	7557.17	3572.04	0.00	0.00	8358.84	PBHL-RAZOR 10E-0308

ANNOTATIONS

MD	Inc	Azi	TVD	+N/-S	+E/-W	VSec	Departure	Annotation
200.00	0.00	0.00	200.00	0.00	0.00	0.00	0.00	Start Build 2.00
1998.64	35.97	103.46	1882.78	-127.17	531.32	112.08	546.33	Start 4768.23 hold at 1998.64 MD
6766.87	35.97	103.46	5741.69	-779.15	3255.24	686.66	3347.19	Start DLS 10.00 TFO -101.30
7747.82	90.00	359.59	6276.00	-209.22	3627.67	1361.08	4116.48	Start 7566.92 hold at 7747.82 MD
15315.01	90.00	359.59	6276.00	7357.77	3573.45	8179.18	11683.67	Start 199.40 hold at 15315.01 MD
15514.41	90.00	359.59	6276.00	7557.17	3572.04	8358.84	11883.07	TD at 15514.41

DESIGN TARGET DETAILS

Name	TVD	+N/-S	+E/-W	Northing	Easting	Latitude	Longitude
BPZ-RAZOR 10E-0308	6276.00	7357.51	3573.45	1565624.82	3457465.97	40.874301°N	103.845785°W
LP-RAZOR 10E-0308	6276.00	-209.22	3627.67	1558060.39	3457660.22	40.853533°N	103.845593°W
PBHL-RAZOR 10E-0308	6276.00	7557.17	3572.04	1565824.42	3457460.86	40.874849°N	103.845790°W

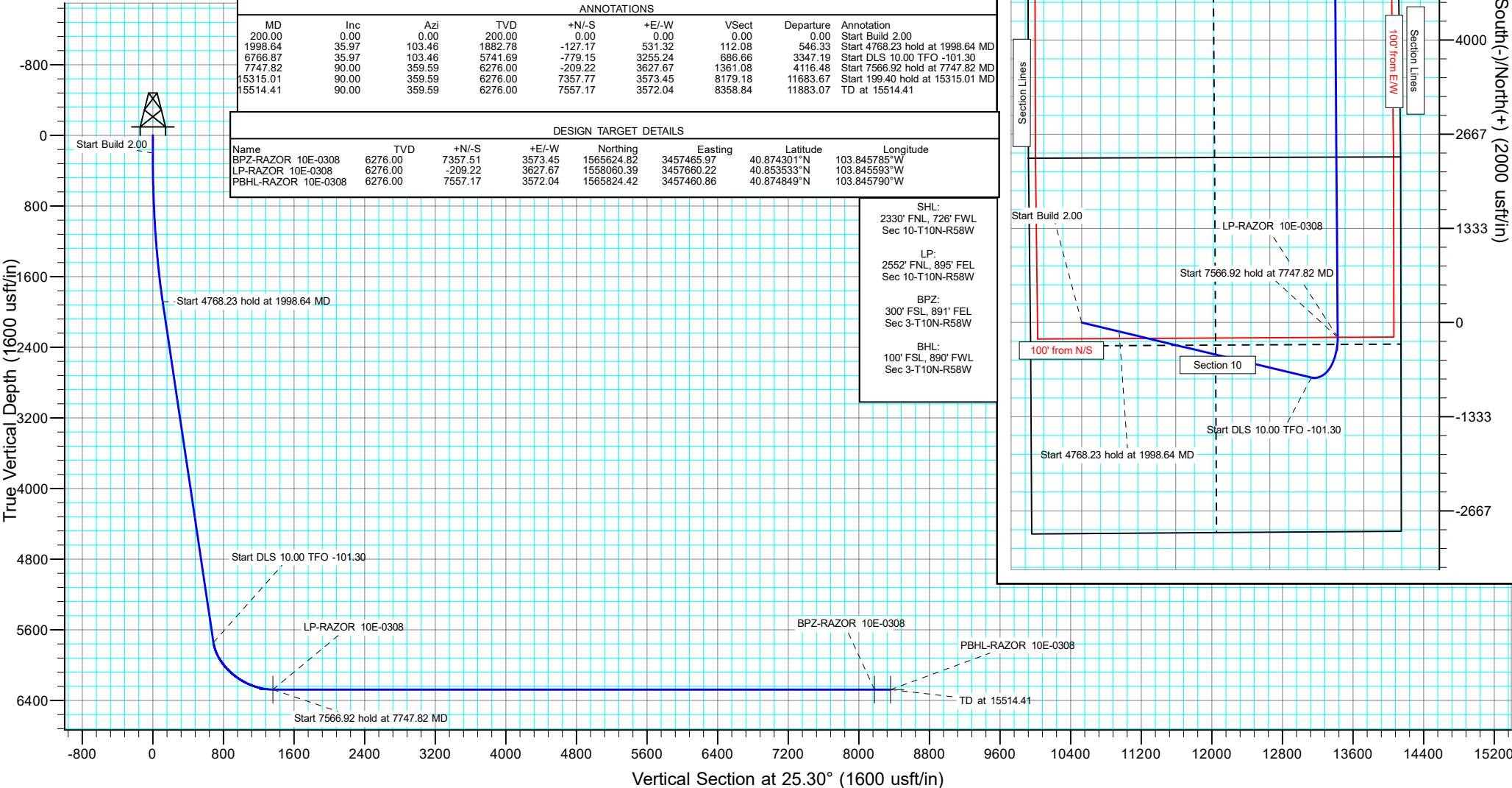
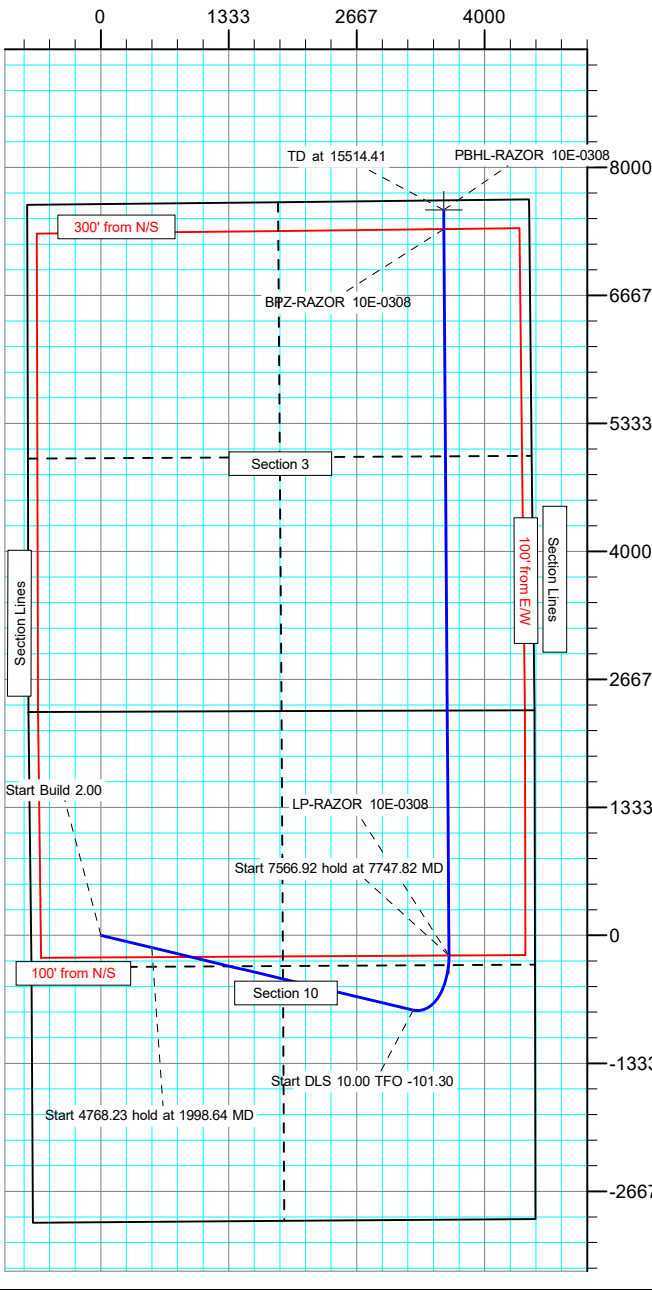
SHL:
2330' FNL, 726' FWL
Sec 10-T10N-R58W

LP:
2552' FNL, 895' FEL
Sec 10-T10N-R58W

BPZ:
300' FSL, 891' FEL
Sec 3-T10N-R58W

BHL:
100' FSL, 890' FWL
Sec 3-T10N-R58W

West(-)/East(+) (2000 usft/in)



Planning Report

Database:	EDM 5000.16 Single User Db	Local Co-ordinate Reference:	Well RAZOR 10E-0308
Company:	FUNDARE RESOURCES OPERATING COMPANY, LLC	TVD Reference:	KB 25' @ 5052.00usft
Project:	WELD COUNTY	MD Reference:	KB 25' @ 5052.00usft
Site:	SEC 10-T10N-R58W	North Reference:	True
Well:	RAZOR 10E-0308	Survey Calculation Method:	Minimum Curvature
Wellbore:	OWB		
Design:	PROPOSAL 1		

Project	WELD COUNTY		
Map System:	US State Plane 1983	System Datum:	Mean Sea Level
Geo Datum:	North American Datum 1983		
Map Zone:	Colorado Northern Zone		

Site	SEC 10-T10N-R58W		
Site Position:		Northing:	1,560,515.21 usft
From:	Lat/Long	Easting:	3,453,234.23 usft
Position Uncertainty:	0.00 usft	Slot Radius:	13.200 in
		Latitude:	40.860495°N
		Longitude:	103.861425°W

Well		RAZOR 10E-0308				
Well Position	+N/-S	0.00 usft	Northing:	1,558,202.44 usft	Latitude:	40.854108°N
	+E/-W	0.00 usft	Easting:	3,454,029.30 usft	Longitude:	103.858706°W
Position Uncertainty		0.00 usft	Wellhead Elevation:	usft	Ground Level:	5,027.00 usft
Grid Convergence:		1.06 °				

Wellbore	OWB				
Magnetics	Model Name	Sample Date	Declination (°)	Dip Angle (°)	Field Strength (nT)
	IGRF2020	4/29/2023	7.21	67.06	52,080.31714154

Design	PROPOSAL 1				
Audit Notes:					
Version:		Phase:	PROTOTYPE	Tie On Depth:	0.00
Vertical Section:	Depth From (TVD) (usft)	+N/-S (usft)	+E/-W (usft)	Direction (°)	
	0.00	0.00	0.00	25.30	

Plan Survey Tool Program	Date	4/30/2023			
Depth From (usft)	Depth To (usft)	Survey (Wellbore)	Tool Name	Remarks	
1	0.00	15,514.41	PROPOSAL 1 (OWB)	MWD	
				OWSG MWD - Standard	

Planning Report

Database:	EDM 5000.16 Single User Db	Local Co-ordinate Reference:	Well RAZOR 10E-0308
Company:	FUNDARE RESOURCES OPERATING COMPANY, LLC	TVD Reference:	KB 25' @ 5052.00usft
Project:	WELD COUNTY	MD Reference:	KB 25' @ 5052.00usft
Site:	SEC 10-T10N-R58W	North Reference:	True
Well:	RAZOR 10E-0308	Survey Calculation Method:	Minimum Curvature
Wellbore:	OWB		
Design:	PROPOSAL 1		

Plan Sections										
Measured Depth (usft)	Inclination (°)	Azimuth (°)	Vertical Depth (usft)	+N/-S (usft)	+E/-W (usft)	Dogleg Rate (°/100ft)	Build Rate (°/100ft)	Turn Rate (°/100ft)	TFO (°)	Target
0.00	0.00	0.00	0.00	0.00	0.00	0.00	0.00	0.00	0.00	
200.00	0.00	0.00	200.00	0.00	0.00	0.00	0.00	0.00	0.00	
1,998.64	35.97	103.46	1,882.78	-127.17	531.32	2.00	2.00	0.00	103.46	
6,766.87	35.97	103.46	5,741.69	-779.15	3,255.24	0.00	0.00	0.00	0.00	
7,747.82	90.00	359.59	6,276.00	-209.22	3,627.67	10.00	5.51	-10.59	-101.30	LP-RAZOR 10E-0308
15,314.74	90.00	359.59	6,276.00	7,357.51	3,573.45	0.00	0.00	0.00	0.00	BPZ-RAZOR 10E-0308
15,315.01	90.00	359.59	6,276.00	7,357.77	3,573.45	2.00	0.00	2.00	90.00	PBHL-RAZOR 10E-0308
15,514.41	90.00	359.59	6,276.00	7,557.17	3,572.04	0.00	0.00	0.00	0.00	PBHL-RAZOR 10E-0308

Planning Report

Database:	EDM 5000.16 Single User Db	Local Co-ordinate Reference:	Well RAZOR 10E-0308
Company:	FUNDARE RESOURCES OPERATING COMPANY, LLC	TVD Reference:	KB 25' @ 5052.00usft
Project:	WELD COUNTY	MD Reference:	KB 25' @ 5052.00usft
Site:	SEC 10-T10N-R58W	North Reference:	True
Well:	RAZOR 10E-0308	Survey Calculation Method:	Minimum Curvature
Wellbore:	OWB		
Design:	PROPOSAL 1		

Planned Survey										
Measured Depth (usft)	Inclination (°)	Azimuth (°)	Vertical Depth (usft)	+N/-S (usft)	+E/-W (usft)	Vertical Section (usft)	Dogleg Rate (°/100ft)	Build Rate (°/100ft)	Turn Rate (°/100ft)	
0.00	0.00	0.00	0.00	0.00	0.00	0.00	0.00	0.00	0.00	
200.00	0.00	0.00	200.00	0.00	0.00	0.00	0.00	0.00	0.00	
Start Build 2.00										
300.00	2.00	103.46	299.98	-0.41	1.70	0.36	2.00	2.00	0.00	
400.00	4.00	103.46	399.84	-1.62	6.79	1.43	2.00	2.00	0.00	
500.00	6.00	103.46	499.45	-3.65	15.26	3.22	2.00	2.00	0.00	
600.00	8.00	103.46	598.70	-6.49	27.11	5.72	2.00	2.00	0.00	
700.00	10.00	103.46	697.47	-10.13	42.33	8.93	2.00	2.00	0.00	
800.00	12.00	103.46	795.62	-14.57	60.88	12.84	2.00	2.00	0.00	
900.00	14.00	103.46	893.06	-19.81	82.76	17.46	2.00	2.00	0.00	
1,000.00	16.00	103.46	989.64	-25.83	107.93	22.77	2.00	2.00	0.00	
1,100.00	18.00	103.46	1,085.27	-32.64	136.36	28.76	2.00	2.00	0.00	
1,200.00	20.00	103.46	1,179.82	-40.22	168.02	35.44	2.00	2.00	0.00	
1,300.00	22.00	103.46	1,273.17	-48.56	202.87	42.79	2.00	2.00	0.00	
1,400.00	24.00	103.46	1,365.21	-57.65	240.87	50.81	2.00	2.00	0.00	
1,500.00	26.00	103.46	1,455.84	-67.49	281.97	59.48	2.00	2.00	0.00	
1,600.00	28.00	103.46	1,544.94	-78.06	326.12	68.79	2.00	2.00	0.00	
1,700.00	30.00	103.46	1,632.39	-89.34	373.27	78.74	2.00	2.00	0.00	
1,800.00	32.00	103.46	1,718.11	-101.33	423.35	89.30	2.00	2.00	0.00	
1,900.00	34.00	103.46	1,801.97	-114.01	476.32	100.47	2.00	2.00	0.00	
1,998.64	35.97	103.46	1,882.78	-127.17	531.32	112.08	2.00	2.00	0.00	
Start 4768.23 hold at 1998.64 MD										
2,000.00	35.97	103.46	1,883.88	-127.36	532.10	112.24	0.00	0.00	0.00	
2,100.00	35.97	103.46	1,964.81	-141.03	589.22	124.29	0.00	0.00	0.00	
2,200.00	35.97	103.46	2,045.74	-154.71	646.35	136.34	0.00	0.00	0.00	
2,300.00	35.97	103.46	2,126.67	-168.38	703.48	148.39	0.00	0.00	0.00	
2,400.00	35.97	103.46	2,207.60	-182.05	760.60	160.44	0.00	0.00	0.00	
2,500.00	35.97	103.46	2,288.53	-195.73	817.73	172.49	0.00	0.00	0.00	
2,600.00	35.97	103.46	2,369.46	-209.40	874.86	184.54	0.00	0.00	0.00	
2,700.00	35.97	103.46	2,450.39	-223.07	931.98	196.59	0.00	0.00	0.00	
2,800.00	35.97	103.46	2,531.32	-236.75	989.11	208.64	0.00	0.00	0.00	
2,900.00	35.97	103.46	2,612.25	-250.42	1,046.24	220.69	0.00	0.00	0.00	
3,000.00	35.97	103.46	2,693.18	-264.09	1,103.36	232.74	0.00	0.00	0.00	
3,100.00	35.97	103.46	2,774.11	-277.77	1,160.49	244.79	0.00	0.00	0.00	
3,200.00	35.97	103.46	2,855.04	-291.44	1,217.62	256.84	0.00	0.00	0.00	
3,300.00	35.97	103.46	2,935.97	-305.11	1,274.74	268.89	0.00	0.00	0.00	
3,400.00	35.97	103.46	3,016.89	-318.79	1,331.87	280.94	0.00	0.00	0.00	
3,500.00	35.97	103.46	3,097.82	-332.46	1,388.99	292.99	0.00	0.00	0.00	
3,600.00	35.97	103.46	3,178.75	-346.13	1,446.12	305.04	0.00	0.00	0.00	
3,700.00	35.97	103.46	3,259.68	-359.81	1,503.25	317.09	0.00	0.00	0.00	
3,800.00	35.97	103.46	3,340.61	-373.48	1,560.37	329.14	0.00	0.00	0.00	
3,900.00	35.97	103.46	3,421.54	-387.15	1,617.50	341.19	0.00	0.00	0.00	
4,000.00	35.97	103.46	3,502.47	-400.83	1,674.63	353.25	0.00	0.00	0.00	
4,100.00	35.97	103.46	3,583.40	-414.50	1,731.75	365.30	0.00	0.00	0.00	
4,200.00	35.97	103.46	3,664.33	-428.17	1,788.88	377.35	0.00	0.00	0.00	
4,300.00	35.97	103.46	3,745.26	-441.85	1,846.01	389.40	0.00	0.00	0.00	
4,400.00	35.97	103.46	3,826.19	-455.52	1,903.13	401.45	0.00	0.00	0.00	
4,500.00	35.97	103.46	3,907.12	-469.19	1,960.26	413.50	0.00	0.00	0.00	
4,600.00	35.97	103.46	3,988.05	-482.87	2,017.39	425.55	0.00	0.00	0.00	
4,700.00	35.97	103.46	4,068.98	-496.54	2,074.51	437.60	0.00	0.00	0.00	
4,800.00	35.97	103.46	4,149.91	-510.21	2,131.64	449.65	0.00	0.00	0.00	
4,900.00	35.97	103.46	4,230.84	-523.89	2,188.77	461.70	0.00	0.00	0.00	
5,000.00	35.97	103.46	4,311.77	-537.56	2,245.89	473.75	0.00	0.00	0.00	

Planning Report

Database:	EDM 5000.16 Single User Db	Local Co-ordinate Reference:	Well RAZOR 10E-0308
Company:	FUNDARE RESOURCES OPERATING COMPANY, LLC	TVD Reference:	KB 25' @ 5052.00usft
Project:	WELD COUNTY	MD Reference:	KB 25' @ 5052.00usft
Site:	SEC 10-T10N-R58W	North Reference:	True
Well:	RAZOR 10E-0308	Survey Calculation Method:	Minimum Curvature
Wellbore:	OWB		
Design:	PROPOSAL 1		

Planned Survey										
Measured Depth (usft)	Inclination (°)	Azimuth (°)	Vertical Depth (usft)	+N/-S (usft)	+E/-W (usft)	Vertical Section (usft)	Dogleg Rate (°/100ft)	Build Rate (°/100ft)	Turn Rate (°/100ft)	
5,100.00	35.97	103.46	4,392.70	-551.23	2,303.02	485.80	0.00	0.00	0.00	
5,200.00	35.97	103.46	4,473.63	-564.91	2,360.15	497.85	0.00	0.00	0.00	
5,300.00	35.97	103.46	4,554.56	-578.58	2,417.27	509.90	0.00	0.00	0.00	
5,400.00	35.97	103.46	4,635.49	-592.26	2,474.40	521.95	0.00	0.00	0.00	
5,500.00	35.97	103.46	4,716.42	-605.93	2,531.53	534.00	0.00	0.00	0.00	
5,600.00	35.97	103.46	4,797.35	-619.60	2,588.65	546.05	0.00	0.00	0.00	
5,700.00	35.97	103.46	4,878.28	-633.28	2,645.78	558.10	0.00	0.00	0.00	
5,800.00	35.97	103.46	4,959.21	-646.95	2,702.90	570.15	0.00	0.00	0.00	
5,900.00	35.97	103.46	5,040.13	-660.62	2,760.03	582.20	0.00	0.00	0.00	
6,000.00	35.97	103.46	5,121.06	-674.30	2,817.16	594.25	0.00	0.00	0.00	
6,100.00	35.97	103.46	5,201.99	-687.97	2,874.28	606.30	0.00	0.00	0.00	
6,200.00	35.97	103.46	5,282.92	-701.64	2,931.41	618.35	0.00	0.00	0.00	
6,300.00	35.97	103.46	5,363.85	-715.32	2,988.54	630.40	0.00	0.00	0.00	
6,400.00	35.97	103.46	5,444.78	-728.99	3,045.66	642.45	0.00	0.00	0.00	
6,500.00	35.97	103.46	5,525.71	-742.66	3,102.79	654.50	0.00	0.00	0.00	
6,600.00	35.97	103.46	5,606.64	-756.34	3,159.92	666.55	0.00	0.00	0.00	
6,700.00	35.97	103.46	5,687.57	-770.01	3,217.04	678.60	0.00	0.00	0.00	
6,766.87	35.97	103.46	5,741.69	-779.15	3,255.24	686.66	0.00	0.00	0.00	
Start DLS 10.00 TFO -101.30										
6,800.00	35.45	97.85	5,768.60	-782.73	3,274.23	691.54	10.00	-1.57	-16.92	
6,900.00	35.51	80.58	5,850.24	-781.94	3,331.75	716.84	10.00	0.05	-17.27	
7,000.00	37.93	64.31	5,930.58	-763.82	3,388.24	757.36	10.00	2.42	-16.27	
7,100.00	42.31	50.32	6,007.19	-728.92	3,441.98	811.88	10.00	4.38	-13.99	
7,200.00	48.10	38.80	6,077.74	-678.30	3,491.33	878.73	10.00	5.79	-11.52	
7,300.00	54.84	29.34	6,140.08	-613.49	3,534.79	955.89	10.00	6.74	-9.46	
7,400.00	62.20	21.39	6,192.32	-536.48	3,571.05	1,041.01	10.00	7.36	-7.95	
7,500.00	69.96	14.48	6,232.87	-449.60	3,599.00	1,131.51	10.00	7.76	-6.91	
7,600.00	77.96	8.23	6,260.50	-355.48	3,617.80	1,224.63	10.00	8.00	-6.25	
7,700.00	86.09	2.35	6,274.37	-256.99	3,626.87	1,317.55	10.00	8.13	-5.88	
7,747.82	90.00	359.59	6,276.00	-209.22	3,627.67	1,361.08	10.00	8.17	-5.77	
Start 7566.92 hold at 7747.82 MD										
7,800.00	90.00	359.59	6,276.00	-157.04	3,627.30	1,408.10	0.00	0.00	0.00	
7,900.00	90.00	359.59	6,276.00	-57.04	3,626.58	1,498.20	0.00	0.00	0.00	
8,000.00	90.00	359.59	6,276.00	42.95	3,625.87	1,588.30	0.00	0.00	0.00	
8,100.00	90.00	359.59	6,276.00	142.95	3,625.15	1,678.40	0.00	0.00	0.00	
8,200.00	90.00	359.59	6,276.00	242.95	3,624.43	1,768.50	0.00	0.00	0.00	
8,300.00	90.00	359.59	6,276.00	342.95	3,623.72	1,858.60	0.00	0.00	0.00	
8,400.00	90.00	359.59	6,276.00	442.94	3,623.00	1,948.70	0.00	0.00	0.00	
8,500.00	90.00	359.59	6,276.00	542.94	3,622.28	2,038.80	0.00	0.00	0.00	
8,600.00	90.00	359.59	6,276.00	642.94	3,621.57	2,128.90	0.00	0.00	0.00	
8,700.00	90.00	359.59	6,276.00	742.93	3,620.85	2,219.00	0.00	0.00	0.00	
8,800.00	90.00	359.59	6,276.00	842.93	3,620.13	2,309.11	0.00	0.00	0.00	
8,900.00	90.00	359.59	6,276.00	942.93	3,619.42	2,399.21	0.00	0.00	0.00	
9,000.00	90.00	359.59	6,276.00	1,042.93	3,618.70	2,489.31	0.00	0.00	0.00	
9,100.00	90.00	359.59	6,276.00	1,142.92	3,617.98	2,579.41	0.00	0.00	0.00	
9,200.00	90.00	359.59	6,276.00	1,242.92	3,617.27	2,669.51	0.00	0.00	0.00	
9,300.00	90.00	359.59	6,276.00	1,342.92	3,616.55	2,759.61	0.00	0.00	0.00	
9,400.00	90.00	359.59	6,276.00	1,442.92	3,615.83	2,849.71	0.00	0.00	0.00	
9,500.00	90.00	359.59	6,276.00	1,542.91	3,615.12	2,939.81	0.00	0.00	0.00	
9,600.00	90.00	359.59	6,276.00	1,642.91	3,614.40	3,029.91	0.00	0.00	0.00	
9,700.00	90.00	359.59	6,276.00	1,742.91	3,613.68	3,120.01	0.00	0.00	0.00	
9,800.00	90.00	359.59	6,276.00	1,842.91	3,612.97	3,210.11	0.00	0.00	0.00	
9,900.00	90.00	359.59	6,276.00	1,942.90	3,612.25	3,300.21	0.00	0.00	0.00	

Planning Report

Database:	EDM 5000.16 Single User Db	Local Co-ordinate Reference:	Well RAZOR 10E-0308
Company:	FUNDARE RESOURCES OPERATING COMPANY, LLC	TVD Reference:	KB 25' @ 5052.00usft
Project:	WELD COUNTY	MD Reference:	KB 25' @ 5052.00usft
Site:	SEC 10-T10N-R58W	North Reference:	True
Well:	RAZOR 10E-0308	Survey Calculation Method:	Minimum Curvature
Wellbore:	OWB		
Design:	PROPOSAL 1		

Planned Survey										
Measured Depth (usft)	Inclination (°)	Azimuth (°)	Vertical Depth (usft)	+N/-S (usft)	+E/-W (usft)	Vertical Section (usft)	Dogleg Rate (°/100ft)	Build Rate (°/100ft)	Turn Rate (°/100ft)	
10,000.00	90.00	359.59	6,276.00	2,042.90	3,611.54	3,390.31	0.00	0.00	0.00	
10,100.00	90.00	359.59	6,276.00	2,142.90	3,610.82	3,480.41	0.00	0.00	0.00	
10,200.00	90.00	359.59	6,276.00	2,242.90	3,610.10	3,570.52	0.00	0.00	0.00	
10,300.00	90.00	359.59	6,276.00	2,342.89	3,609.39	3,660.62	0.00	0.00	0.00	
10,400.00	90.00	359.59	6,276.00	2,442.89	3,608.67	3,750.72	0.00	0.00	0.00	
10,500.00	90.00	359.59	6,276.00	2,542.89	3,607.95	3,840.82	0.00	0.00	0.00	
10,600.00	90.00	359.59	6,276.00	2,642.89	3,607.24	3,930.92	0.00	0.00	0.00	
10,700.00	90.00	359.59	6,276.00	2,742.88	3,606.52	4,021.02	0.00	0.00	0.00	
10,800.00	90.00	359.59	6,276.00	2,842.88	3,605.80	4,111.12	0.00	0.00	0.00	
10,900.00	90.00	359.59	6,276.00	2,942.88	3,605.09	4,201.22	0.00	0.00	0.00	
11,000.00	90.00	359.59	6,276.00	3,042.88	3,604.37	4,291.32	0.00	0.00	0.00	
11,100.00	90.00	359.59	6,276.00	3,142.87	3,603.65	4,381.42	0.00	0.00	0.00	
11,200.00	90.00	359.59	6,276.00	3,242.87	3,602.94	4,471.52	0.00	0.00	0.00	
11,300.00	90.00	359.59	6,276.00	3,342.87	3,602.22	4,561.62	0.00	0.00	0.00	
11,400.00	90.00	359.59	6,276.00	3,442.87	3,601.50	4,651.72	0.00	0.00	0.00	
11,500.00	90.00	359.59	6,276.00	3,542.86	3,600.79	4,741.83	0.00	0.00	0.00	
11,600.00	90.00	359.59	6,276.00	3,642.86	3,600.07	4,831.93	0.00	0.00	0.00	
11,700.00	90.00	359.59	6,276.00	3,742.86	3,599.35	4,922.03	0.00	0.00	0.00	
11,800.00	90.00	359.59	6,276.00	3,842.86	3,598.64	5,012.13	0.00	0.00	0.00	
11,900.00	90.00	359.59	6,276.00	3,942.85	3,597.92	5,102.23	0.00	0.00	0.00	
12,000.00	90.00	359.59	6,276.00	4,042.85	3,597.20	5,192.33	0.00	0.00	0.00	
12,100.00	90.00	359.59	6,276.00	4,142.85	3,596.49	5,282.43	0.00	0.00	0.00	
12,200.00	90.00	359.59	6,276.00	4,242.85	3,595.77	5,372.53	0.00	0.00	0.00	
12,300.00	90.00	359.59	6,276.00	4,342.84	3,595.06	5,462.63	0.00	0.00	0.00	
12,400.00	90.00	359.59	6,276.00	4,442.84	3,594.34	5,552.73	0.00	0.00	0.00	
12,500.00	90.00	359.59	6,276.00	4,542.84	3,593.62	5,642.83	0.00	0.00	0.00	
12,600.00	90.00	359.59	6,276.00	4,642.83	3,592.91	5,732.93	0.00	0.00	0.00	
12,700.00	90.00	359.59	6,276.00	4,742.83	3,592.19	5,823.03	0.00	0.00	0.00	
12,800.00	90.00	359.59	6,276.00	4,842.83	3,591.47	5,913.13	0.00	0.00	0.00	
12,900.00	90.00	359.59	6,276.00	4,942.83	3,590.76	6,003.24	0.00	0.00	0.00	
13,000.00	90.00	359.59	6,276.00	5,042.82	3,590.04	6,093.34	0.00	0.00	0.00	
13,100.00	90.00	359.59	6,276.00	5,142.82	3,589.32	6,183.44	0.00	0.00	0.00	
13,200.00	90.00	359.59	6,276.00	5,242.82	3,588.61	6,273.54	0.00	0.00	0.00	
13,300.00	90.00	359.59	6,276.00	5,342.82	3,587.89	6,363.64	0.00	0.00	0.00	
13,400.00	90.00	359.59	6,276.00	5,442.81	3,587.17	6,453.74	0.00	0.00	0.00	
13,500.00	90.00	359.59	6,276.00	5,542.81	3,586.46	6,543.84	0.00	0.00	0.00	
13,600.00	90.00	359.59	6,276.00	5,642.81	3,585.74	6,633.94	0.00	0.00	0.00	
13,700.00	90.00	359.59	6,276.00	5,742.81	3,585.02	6,724.04	0.00	0.00	0.00	
13,800.00	90.00	359.59	6,276.00	5,842.80	3,584.31	6,814.14	0.00	0.00	0.00	
13,900.00	90.00	359.59	6,276.00	5,942.80	3,583.59	6,904.24	0.00	0.00	0.00	
14,000.00	90.00	359.59	6,276.00	6,042.80	3,582.87	6,994.34	0.00	0.00	0.00	
14,100.00	90.00	359.59	6,276.00	6,142.80	3,582.16	7,084.44	0.00	0.00	0.00	
14,200.00	90.00	359.59	6,276.00	6,242.79	3,581.44	7,174.54	0.00	0.00	0.00	
14,300.00	90.00	359.59	6,276.00	6,342.79	3,580.72	7,264.65	0.00	0.00	0.00	
14,400.00	90.00	359.59	6,276.00	6,442.79	3,580.01	7,354.75	0.00	0.00	0.00	
14,500.00	90.00	359.59	6,276.00	6,542.79	3,579.29	7,444.85	0.00	0.00	0.00	
14,600.00	90.00	359.59	6,276.00	6,642.78	3,578.57	7,534.95	0.00	0.00	0.00	
14,700.00	90.00	359.59	6,276.00	6,742.78	3,577.86	7,625.05	0.00	0.00	0.00	
14,800.00	90.00	359.59	6,276.00	6,842.78	3,577.14	7,715.15	0.00	0.00	0.00	
14,900.00	90.00	359.59	6,276.00	6,942.78	3,576.43	7,805.25	0.00	0.00	0.00	
15,000.00	90.00	359.59	6,276.00	7,042.77	3,575.71	7,895.35	0.00	0.00	0.00	
15,100.00	90.00	359.59	6,276.00	7,142.77	3,574.99	7,985.45	0.00	0.00	0.00	
15,200.00	90.00	359.59	6,276.00	7,242.77	3,574.28	8,075.55	0.00	0.00	0.00	

Planning Report

Database:	EDM 5000.16 Single User Db	Local Co-ordinate Reference:	Well RAZOR 10E-0308
Company:	FUNDARE RESOURCES OPERATING COMPANY, LLC	TVD Reference:	KB 25' @ 5052.00usft
Project:	WELD COUNTY	MD Reference:	KB 25' @ 5052.00usft
Site:	SEC 10-T10N-R58W	North Reference:	True
Well:	RAZOR 10E-0308	Survey Calculation Method:	Minimum Curvature
Wellbore:	OWB		
Design:	PROPOSAL 1		

Planned Survey										
Measured Depth (usft)	Inclination (°)	Azimuth (°)	Vertical Depth (usft)	+N/-S (usft)	+E/-W (usft)	Vertical Section (usft)	Dogleg Rate (°/100ft)	Build Rate (°/100ft)	Turn Rate (°/100ft)	
15,300.00	90.00	359.59	6,276.00	7,342.77	3,573.56	8,165.65	0.00	0.00	0.00	
15,314.74	90.00	359.59	6,276.00	7,357.51	3,573.45	8,178.93	0.00	0.00	0.00	
15,315.01	90.00	359.59	6,276.00	7,357.77	3,573.45	8,179.18	2.00	0.00	2.00	
Start 199.40 hold at 15315.01 MD										
15,400.00	90.00	359.59	6,276.00	7,442.76	3,572.85	8,255.76	0.00	0.00	0.00	
15,500.00	90.00	359.59	6,276.00	7,542.76	3,572.14	8,345.86	0.00	0.00	0.00	
15,514.41	90.00	359.59	6,276.00	7,557.17	3,572.04	8,358.84	0.00	0.00	0.00	
TD at 15514.41										

Design Targets									
Target Name - hit/miss target - Shape	Dip Angle (°)	Dip Dir. (°)	TVD (usft)	+N/-S (usft)	+E/-W (usft)	Northing (usft)	Easting (usft)	Latitude	Longitude
BPZ-RAZOR 10E-0308 - plan hits target center - Point	0.00	0.00	6,276.00	7,357.51	3,573.45	1,565,624.82	3,457,465.97	40.874301°N	103.845785°W
PBHL-RAZOR 10E-0308 - plan hits target center - Point	0.00	0.00	6,276.00	7,557.17	3,572.04	1,565,824.42	3,457,460.86	40.874849°N	103.845790°W
LP-RAZOR 10E-0308 - plan hits target center - Point	0.00	0.00	6,276.00	-209.22	3,627.67	1,558,060.40	3,457,660.22	40.853533°N	103.845593°W

Plan Annotations					
Measured Depth (usft)	Vertical Depth (usft)	Local Coordinates			
		+N/-S (usft)	+E/-W (usft)	Comment	
200.00	200.00	0.00	0.00	Start Build 2.00	
1,998.64	1,882.78	-127.17	531.32	Start 4768.23 hold at 1998.64 MD	
6,766.87	5,741.69	-779.15	3,255.24	Start DLS 10.00 TFO -101.30	
7,747.82	6,276.00	-209.22	3,627.67	Start 7566.92 hold at 7747.82 MD	
15,315.01	6,276.00	7,357.77	3,573.45	Start 199.40 hold at 15315.01 MD	
15,514.41	6,276.00	7,557.17	3,572.04	TD at 15514.41	