

FUNDARE RESOURCES OPERATING COMPANY, LLC

**WELD COUNTY
SEC 10-T10N-R58W
RAZOR 10E-0307**

OWB

Plan: PROPOSAL 1

Standard Planning Report

30 April, 2023

Project: WELD COUNTY
Site: SEC 10-T10N-R58W
Well: RAZOR 10E-0307
Wellbore: OWB
Design: PROPOSAL 1

PROJECT DETAILS: WELD COUNTY
Geodetic System: US State Plane 1983
Datum: North American Datum 1983
Ellipsoid: GRS 1980
Zone: Colorado Northern Zone
System Datum: Mean Sea Level



Azimuths to True North
Magnetic North: 7.21°
Magnetic Field
Strength: 52080.3nT
Dip Angle: 67.06°
Date: 4/29/2023
Model: IGRF2020

WELL DETAILS: RAZOR 10E-0307

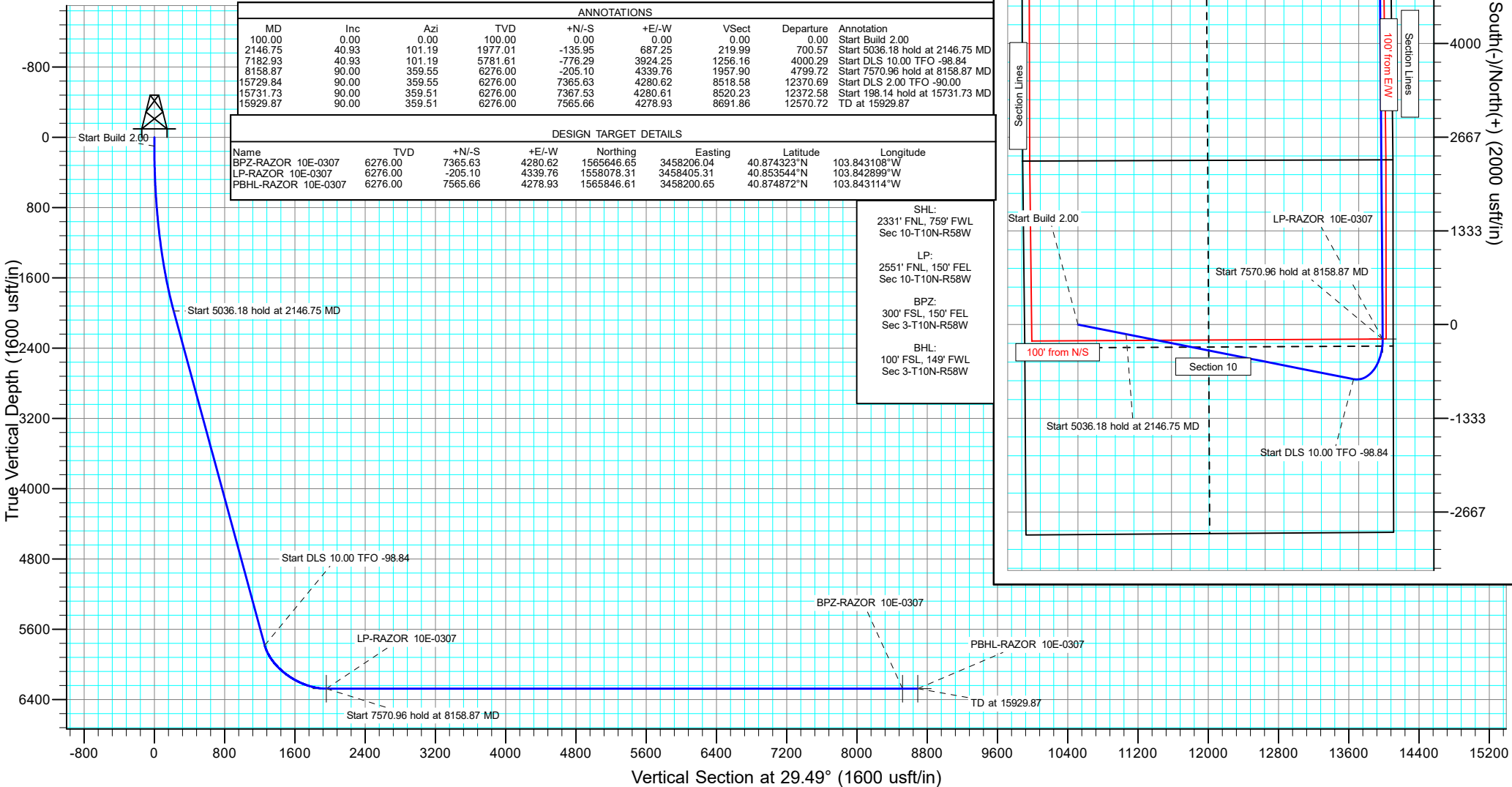
5031.00							Slot
+N/-S	+E/-W	Northing	Easting	Latitude	Longitude		
0.00	0.00	1558203.05	3454062.49	40.854108°N	103.859586°W		

FORMATION TOP DETAILS

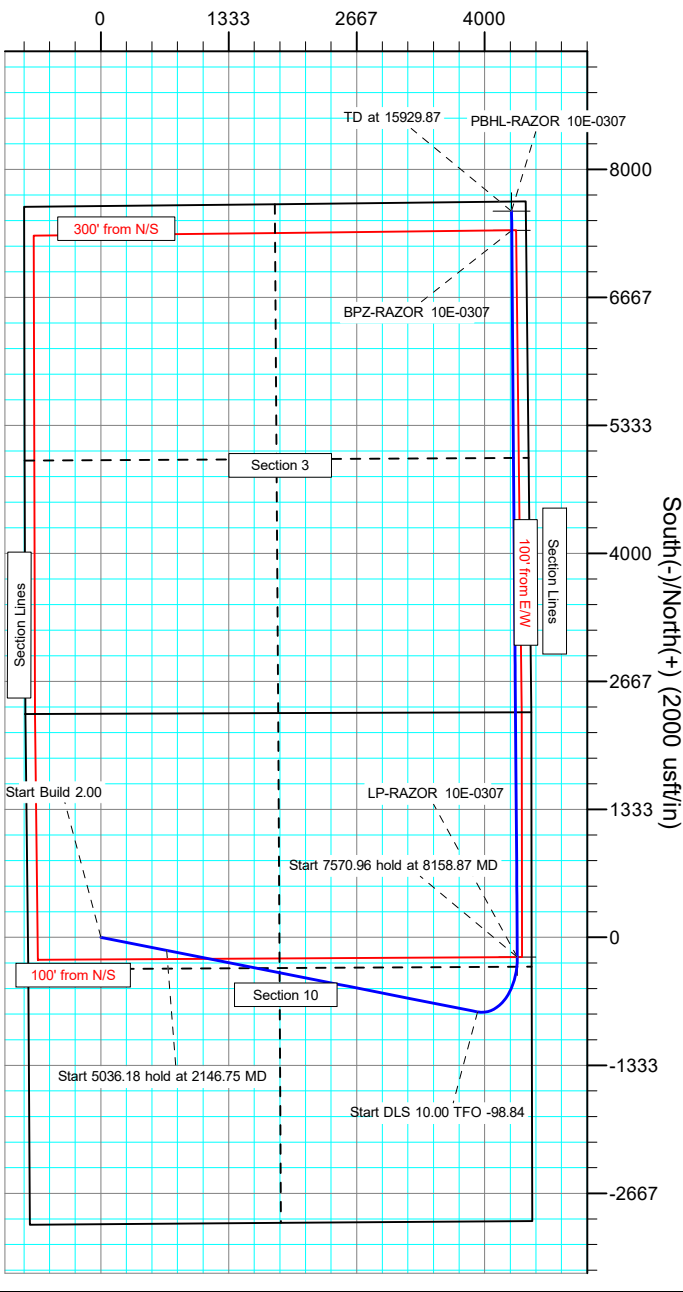
No formation data is available

SECTION DETAILS

Sec	MD	Inc	Azi	TVD	+N/-S	+E/-W	Dleg	TFace	VSec	Target
1	0.00	0.00	0.00	0.00	0.00	0.00	0.00	0.00	0.00	
2	100.00	0.00	0.00	100.00	0.00	0.00	0.00	0.00	0.00	
3	2146.75	40.93	101.19	1977.01	-135.95	687.25	2.00	101.19	219.99	
4	7182.93	40.93	101.19	5781.61	-776.29	3924.25	0.00	0.00	1256.16	
5	8158.87	90.00	359.55	6276.00	-205.10	4339.76	10.00	-98.84	1957.90	LP-RAZOR 10E-0307
6	15729.84	90.00	359.55	6276.00	7365.63	4280.62	0.00	0.00	8518.58	BPZ-RAZOR 10E-0307
7	15731.73	90.00	359.51	6276.00	7367.53	4280.61	2.00	-90.00	8520.23	PBHL-RAZOR 10E-0307
8	15929.87	90.00	359.51	6276.00	7565.66	4278.93	0.00	0.00	8691.86	PBHL-RAZOR 10E-0307



West(-)/East(+) (2000 usft/in)



Planning Report

Database:	EDM 5000.16 Single User Db	Local Co-ordinate Reference:	Well RAZOR 10E-0307
Company:	FUNDARE RESOURCES OPERATING COMPANY, LLC	TVD Reference:	KB 25' @ 5056.00usft
Project:	WELD COUNTY	MD Reference:	KB 25' @ 5056.00usft
Site:	SEC 10-T10N-R58W	North Reference:	True
Well:	RAZOR 10E-0307	Survey Calculation Method:	Minimum Curvature
Wellbore:	OWB		
Design:	PROPOSAL 1		

Project	WELD COUNTY		
Map System:	US State Plane 1983	System Datum:	Mean Sea Level
Geo Datum:	North American Datum 1983		
Map Zone:	Colorado Northern Zone		

Site		SEC 10-T10N-R58W			
Site Position:		Northing:	1,560,515.21 usft	Latitude:	40.860495°N
From:	Lat/Long	Easting:	3,453,234.23 usft	Longitude:	103.861425°W
Position Uncertainty:		0.00 usft	Slot Radius:	13.200 in	

Well		RAZOR 10E-0307				
Well Position	+N/-S	0.00 usft	Northing:	1,558,203.05 usft	Latitude:	40.854108°N
	+E/-W	0.00 usft	Easting:	3,454,062.49 usft	Longitude:	103.858586°W
Position Uncertainty		0.00 usft	Wellhead Elevation:	usft	Ground Level:	5,031.00 usft
Grid Convergence:		1.06 °				

Wellbore	OWB				
Magnetics	Model Name	Sample Date	Declination (°)	Dip Angle (°)	Field Strength (nT)
	IGRF2020	4/29/2023	7.21	67.06	52,080.29659417

Design	PROPOSAL 1			
Audit Notes:				
Version:	Phase:	PROTOTYPE	Tie On Depth:	0.00
Vertical Section:	Depth From (TVD) (usft)	+N/-S (usft)	+E/-W (usft)	Direction (°)
	0.00	0.00	0.00	29.49

Plan Survey Tool Program	Date	4/30/2023		
Depth From (usft)	Depth To (usft)	Survey (Wellbore)	Tool Name	Remarks
1	0.00	15,929.87 PROPOSAL 1 (OWB)	MWD	
			OWSG MWD - Standard	

Planning Report

Database:	EDM 5000.16 Single User Db	Local Co-ordinate Reference:	Well RAZOR 10E-0307
Company:	FUNDARE RESOURCES OPERATING COMPANY, LLC	TVD Reference:	KB 25' @ 5056.00usft
Project:	WELD COUNTY	MD Reference:	KB 25' @ 5056.00usft
Site:	SEC 10-T10N-R58W	North Reference:	True
Well:	RAZOR 10E-0307	Survey Calculation Method:	Minimum Curvature
Wellbore:	OWB		
Design:	PROPOSAL 1		

Plan Sections										
Measured Depth (usft)	Inclination (°)	Azimuth (°)	Vertical Depth (usft)	+N/-S (usft)	+E/-W (usft)	Dogleg Rate (°/100ft)	Build Rate (°/100ft)	Turn Rate (°/100ft)	TFO (°)	Target
0.00	0.00	0.00	0.00	0.00	0.00	0.00	0.00	0.00	0.00	
100.00	0.00	0.00	100.00	0.00	0.00	0.00	0.00	0.00	0.00	
2,146.75	40.93	101.19	1,977.01	-135.95	687.25	2.00	2.00	0.00	101.19	
7,182.93	40.93	101.19	5,781.61	-776.29	3,924.25	0.00	0.00	0.00	0.00	
8,158.87	90.00	359.55	6,276.00	-205.10	4,339.76	10.00	5.03	-10.41	-98.84	LP-RAZOR 10E-0307
15,729.84	90.00	359.55	6,276.00	7,365.63	4,280.62	0.00	0.00	0.00	0.00	BPZ-RAZOR 10E-0307
15,731.73	90.00	359.51	6,276.00	7,367.53	4,280.61	2.00	0.00	-2.00	-90.00	PBHL-RAZOR 10E-0307
15,929.87	90.00	359.51	6,276.00	7,565.66	4,278.93	0.00	0.00	0.00	0.00	PBHL-RAZOR 10E-0307

Planning Report

Database:	EDM 5000.16 Single User Db	Local Co-ordinate Reference:	Well RAZOR 10E-0307
Company:	FUNDARE RESOURCES OPERATING COMPANY, LLC	TVD Reference:	KB 25' @ 5056.00usft
Project:	WELD COUNTY	MD Reference:	KB 25' @ 5056.00usft
Site:	SEC 10-T10N-R58W	North Reference:	True
Well:	RAZOR 10E-0307	Survey Calculation Method:	Minimum Curvature
Wellbore:	OWB		
Design:	PROPOSAL 1		

Planned Survey										
Measured Depth (usft)	Inclination (°)	Azimuth (°)	Vertical Depth (usft)	+N/-S (usft)	+E/-W (usft)	Vertical Section (usft)	Dogleg Rate (°/100ft)	Build Rate (°/100ft)	Turn Rate (°/100ft)	
0.00	0.00	0.00	0.00	0.00	0.00	0.00	0.00	0.00	0.00	
100.00	0.00	0.00	100.00	0.00	0.00	0.00	0.00	0.00	0.00	
Start Build 2.00										
200.00	2.00	101.19	199.98	-0.34	1.71	0.55	2.00	2.00	0.00	
300.00	4.00	101.19	299.84	-1.35	6.85	2.19	2.00	2.00	0.00	
400.00	6.00	101.19	399.45	-3.05	15.40	4.93	2.00	2.00	0.00	
500.00	8.00	101.19	498.70	-5.41	27.35	8.75	2.00	2.00	0.00	
600.00	10.00	101.19	597.47	-8.45	42.70	13.67	2.00	2.00	0.00	
700.00	12.00	101.19	695.62	-12.15	61.41	19.66	2.00	2.00	0.00	
800.00	14.00	101.19	793.06	-16.51	83.48	26.72	2.00	2.00	0.00	
900.00	16.00	101.19	889.64	-21.54	108.87	34.85	2.00	2.00	0.00	
1,000.00	18.00	101.19	985.27	-27.21	137.55	44.03	2.00	2.00	0.00	
1,100.00	20.00	101.19	1,079.82	-33.53	169.48	54.25	2.00	2.00	0.00	
1,200.00	22.00	101.19	1,173.17	-40.48	204.64	65.51	2.00	2.00	0.00	
1,300.00	24.00	101.19	1,265.21	-48.06	242.97	77.77	2.00	2.00	0.00	
1,400.00	26.00	101.19	1,355.84	-56.26	284.42	91.04	2.00	2.00	0.00	
1,500.00	28.00	101.19	1,444.94	-65.07	328.96	105.30	2.00	2.00	0.00	
1,600.00	30.00	101.19	1,532.39	-74.48	376.51	120.52	2.00	2.00	0.00	
1,700.00	32.00	101.19	1,618.11	-84.48	427.04	136.70	2.00	2.00	0.00	
1,800.00	34.00	101.19	1,701.97	-95.04	480.46	153.80	2.00	2.00	0.00	
1,900.00	36.00	101.19	1,783.88	-106.17	536.73	171.81	2.00	2.00	0.00	
2,000.00	38.00	101.19	1,863.74	-117.85	595.76	190.70	2.00	2.00	0.00	
2,100.00	40.00	101.19	1,941.45	-130.07	657.49	210.47	2.00	2.00	0.00	
2,146.75	40.93	101.19	1,977.01	-135.95	687.25	219.99	2.00	2.00	0.00	
Start 5036.18 hold at 2146.75 MD										
2,200.00	40.93	101.19	2,017.24	-142.72	721.48	230.95	0.00	0.00	0.00	
2,300.00	40.93	101.19	2,092.79	-155.44	785.76	251.52	0.00	0.00	0.00	
2,400.00	40.93	101.19	2,168.33	-168.15	850.03	272.10	0.00	0.00	0.00	
2,500.00	40.93	101.19	2,243.88	-180.87	914.31	292.67	0.00	0.00	0.00	
2,600.00	40.93	101.19	2,319.43	-193.58	978.58	313.25	0.00	0.00	0.00	
2,700.00	40.93	101.19	2,394.97	-206.30	1,042.86	333.82	0.00	0.00	0.00	
2,800.00	40.93	101.19	2,470.52	-219.01	1,107.13	354.40	0.00	0.00	0.00	
2,900.00	40.93	101.19	2,546.06	-231.73	1,171.41	374.97	0.00	0.00	0.00	
3,000.00	40.93	101.19	2,621.61	-244.44	1,235.68	395.55	0.00	0.00	0.00	
3,100.00	40.93	101.19	2,697.15	-257.16	1,299.96	416.12	0.00	0.00	0.00	
3,200.00	40.93	101.19	2,772.70	-269.87	1,364.23	436.69	0.00	0.00	0.00	
3,300.00	40.93	101.19	2,848.24	-282.59	1,428.51	457.27	0.00	0.00	0.00	
3,400.00	40.93	101.19	2,923.79	-295.30	1,492.78	477.84	0.00	0.00	0.00	
3,500.00	40.93	101.19	2,999.33	-308.02	1,557.05	498.42	0.00	0.00	0.00	
3,600.00	40.93	101.19	3,074.88	-320.73	1,621.33	518.99	0.00	0.00	0.00	
3,700.00	40.93	101.19	3,150.42	-333.45	1,685.60	539.57	0.00	0.00	0.00	
3,800.00	40.93	101.19	3,225.97	-346.16	1,749.88	560.14	0.00	0.00	0.00	
3,900.00	40.93	101.19	3,301.51	-358.88	1,814.15	580.72	0.00	0.00	0.00	
4,000.00	40.93	101.19	3,377.06	-371.59	1,878.43	601.29	0.00	0.00	0.00	
4,100.00	40.93	101.19	3,452.61	-384.30	1,942.70	621.87	0.00	0.00	0.00	
4,200.00	40.93	101.19	3,528.15	-397.02	2,006.98	642.44	0.00	0.00	0.00	
4,300.00	40.93	101.19	3,603.70	-409.73	2,071.25	663.01	0.00	0.00	0.00	
4,400.00	40.93	101.19	3,679.24	-422.45	2,135.53	683.59	0.00	0.00	0.00	
4,500.00	40.93	101.19	3,754.79	-435.16	2,199.80	704.16	0.00	0.00	0.00	
4,600.00	40.93	101.19	3,830.33	-447.88	2,264.08	724.74	0.00	0.00	0.00	
4,700.00	40.93	101.19	3,905.88	-460.59	2,328.35	745.31	0.00	0.00	0.00	
4,800.00	40.93	101.19	3,981.42	-473.31	2,392.63	765.89	0.00	0.00	0.00	
4,900.00	40.93	101.19	4,056.97	-486.02	2,456.90	786.46	0.00	0.00	0.00	

Planning Report

Database:	EDM 5000.16 Single User Db	Local Co-ordinate Reference:	Well RAZOR 10E-0307
Company:	FUNDARE RESOURCES OPERATING COMPANY, LLC	TVD Reference:	KB 25' @ 5056.00usft
Project:	WELD COUNTY	MD Reference:	KB 25' @ 5056.00usft
Site:	SEC 10-T10N-R58W	North Reference:	True
Well:	RAZOR 10E-0307	Survey Calculation Method:	Minimum Curvature
Wellbore:	OWB		
Design:	PROPOSAL 1		

Planned Survey										
Measured Depth (usft)	Inclination (°)	Azimuth (°)	Vertical Depth (usft)	+N/-S (usft)	+E/-W (usft)	Vertical Section (usft)	Dogleg Rate (°/100ft)	Build Rate (°/100ft)	Turn Rate (°/100ft)	
5,000.00	40.93	101.19	4,132.51	-498.74	2,521.18	807.04	0.00	0.00	0.00	
5,100.00	40.93	101.19	4,208.06	-511.45	2,585.45	827.61	0.00	0.00	0.00	
5,200.00	40.93	101.19	4,283.60	-524.17	2,649.72	848.18	0.00	0.00	0.00	
5,300.00	40.93	101.19	4,359.15	-536.88	2,714.00	868.76	0.00	0.00	0.00	
5,400.00	40.93	101.19	4,434.70	-549.60	2,778.27	889.33	0.00	0.00	0.00	
5,500.00	40.93	101.19	4,510.24	-562.31	2,842.55	909.91	0.00	0.00	0.00	
5,600.00	40.93	101.19	4,585.79	-575.03	2,906.82	930.48	0.00	0.00	0.00	
5,700.00	40.93	101.19	4,661.33	-587.74	2,971.10	951.06	0.00	0.00	0.00	
5,800.00	40.93	101.19	4,736.88	-600.46	3,035.37	971.63	0.00	0.00	0.00	
5,900.00	40.93	101.19	4,812.42	-613.17	3,099.65	992.21	0.00	0.00	0.00	
6,000.00	40.93	101.19	4,887.97	-625.89	3,163.92	1,012.78	0.00	0.00	0.00	
6,100.00	40.93	101.19	4,963.51	-638.60	3,228.20	1,033.36	0.00	0.00	0.00	
6,200.00	40.93	101.19	5,039.06	-651.32	3,292.47	1,053.93	0.00	0.00	0.00	
6,300.00	40.93	101.19	5,114.60	-664.03	3,356.75	1,074.50	0.00	0.00	0.00	
6,400.00	40.93	101.19	5,190.15	-676.74	3,421.02	1,095.08	0.00	0.00	0.00	
6,500.00	40.93	101.19	5,265.69	-689.46	3,485.30	1,115.65	0.00	0.00	0.00	
6,600.00	40.93	101.19	5,341.24	-702.17	3,549.57	1,136.23	0.00	0.00	0.00	
6,700.00	40.93	101.19	5,416.78	-714.89	3,613.84	1,156.80	0.00	0.00	0.00	
6,800.00	40.93	101.19	5,492.33	-727.60	3,678.12	1,177.38	0.00	0.00	0.00	
6,900.00	40.93	101.19	5,567.88	-740.32	3,742.39	1,197.95	0.00	0.00	0.00	
7,000.00	40.93	101.19	5,643.42	-753.03	3,806.67	1,218.53	0.00	0.00	0.00	
7,100.00	40.93	101.19	5,718.97	-765.75	3,870.94	1,239.10	0.00	0.00	0.00	
7,182.93	40.93	101.19	5,781.61	-776.29	3,924.25	1,256.16	0.00	0.00	0.00	
Start DLS 10.00 TFO -98.84										
7,200.00	40.70	98.60	5,794.54	-778.21	3,935.24	1,259.90	10.00	-1.37	-15.16	
7,300.00	40.52	83.22	5,870.64	-779.25	3,999.90	1,290.83	10.00	-0.18	-15.39	
7,400.00	42.34	68.33	5,945.80	-762.94	4,063.62	1,336.40	10.00	1.82	-14.89	
7,500.00	45.92	54.89	6,017.72	-729.76	4,124.45	1,395.23	10.00	3.58	-13.43	
7,600.00	50.88	43.26	6,084.22	-680.73	4,180.56	1,465.53	10.00	4.95	-11.64	
7,700.00	56.83	33.29	6,143.28	-617.33	4,230.24	1,545.16	10.00	5.95	-9.97	
7,800.00	63.46	24.65	6,193.11	-541.50	4,271.97	1,631.71	10.00	6.64	-8.63	
7,900.00	70.56	16.99	6,232.18	-455.54	4,304.49	1,722.55	10.00	7.10	-7.66	
8,000.00	77.96	9.99	6,259.32	-362.05	4,326.82	1,814.91	10.00	7.39	-7.00	
8,100.00	85.52	3.37	6,273.70	-263.88	4,338.26	1,906.00	10.00	7.56	-6.62	
8,158.87	90.00	359.55	6,276.00	-205.10	4,339.76	1,957.90	10.00	7.62	-6.49	
Start 7570.96 hold at 8158.87 MD										
8,200.00	90.00	359.55	6,276.00	-163.97	4,339.44	1,993.54	0.00	0.00	0.00	
8,300.00	90.00	359.55	6,276.00	-63.98	4,338.66	2,080.20	0.00	0.00	0.00	
8,400.00	90.00	359.55	6,276.00	36.02	4,337.88	2,166.85	0.00	0.00	0.00	
8,500.00	90.00	359.55	6,276.00	136.02	4,337.10	2,253.51	0.00	0.00	0.00	
8,600.00	90.00	359.55	6,276.00	236.01	4,336.32	2,340.16	0.00	0.00	0.00	
8,700.00	90.00	359.55	6,276.00	336.01	4,335.53	2,426.82	0.00	0.00	0.00	
8,800.00	90.00	359.55	6,276.00	436.01	4,334.75	2,513.48	0.00	0.00	0.00	
8,900.00	90.00	359.55	6,276.00	536.01	4,333.97	2,600.13	0.00	0.00	0.00	
9,000.00	90.00	359.55	6,276.00	636.00	4,333.19	2,686.79	0.00	0.00	0.00	
9,100.00	90.00	359.55	6,276.00	736.00	4,332.41	2,773.44	0.00	0.00	0.00	
9,200.00	90.00	359.55	6,276.00	836.00	4,331.63	2,860.10	0.00	0.00	0.00	
9,300.00	90.00	359.55	6,276.00	935.99	4,330.85	2,946.75	0.00	0.00	0.00	
9,400.00	90.00	359.55	6,276.00	1,035.99	4,330.07	3,033.41	0.00	0.00	0.00	
9,500.00	90.00	359.55	6,276.00	1,135.99	4,329.29	3,120.07	0.00	0.00	0.00	
9,600.00	90.00	359.55	6,276.00	1,235.98	4,328.50	3,206.72	0.00	0.00	0.00	
9,700.00	90.00	359.55	6,276.00	1,335.98	4,327.72	3,293.38	0.00	0.00	0.00	
9,800.00	90.00	359.55	6,276.00	1,435.98	4,326.94	3,380.03	0.00	0.00	0.00	

Planning Report

Database:	EDM 5000.16 Single User Db	Local Co-ordinate Reference:	Well RAZOR 10E-0307
Company:	FUNDARE RESOURCES OPERATING COMPANY, LLC	TVD Reference:	KB 25' @ 5056.00usft
Project:	WELD COUNTY	MD Reference:	KB 25' @ 5056.00usft
Site:	SEC 10-T10N-R58W	North Reference:	True
Well:	RAZOR 10E-0307	Survey Calculation Method:	Minimum Curvature
Wellbore:	OWB		
Design:	PROPOSAL 1		

Planned Survey										
Measured Depth (usft)	Inclination (°)	Azimuth (°)	Vertical Depth (usft)	+N/-S (usft)	+E/-W (usft)	Vertical Section (usft)	Dogleg Rate (°/100ft)	Build Rate (°/100ft)	Turn Rate (°/100ft)	
9,900.00	90.00	359.55	6,276.00	1,535.97	4,326.16	3,466.69	0.00	0.00	0.00	
10,000.00	90.00	359.55	6,276.00	1,635.97	4,325.38	3,553.35	0.00	0.00	0.00	
10,100.00	90.00	359.55	6,276.00	1,735.97	4,324.60	3,640.00	0.00	0.00	0.00	
10,200.00	90.00	359.55	6,276.00	1,835.97	4,323.82	3,726.66	0.00	0.00	0.00	
10,300.00	90.00	359.55	6,276.00	1,935.96	4,323.04	3,813.31	0.00	0.00	0.00	
10,400.00	90.00	359.55	6,276.00	2,035.96	4,322.25	3,899.97	0.00	0.00	0.00	
10,500.00	90.00	359.55	6,276.00	2,135.96	4,321.47	3,986.63	0.00	0.00	0.00	
10,600.00	90.00	359.55	6,276.00	2,235.95	4,320.69	4,073.28	0.00	0.00	0.00	
10,700.00	90.00	359.55	6,276.00	2,335.95	4,319.91	4,159.94	0.00	0.00	0.00	
10,800.00	90.00	359.55	6,276.00	2,435.95	4,319.13	4,246.59	0.00	0.00	0.00	
10,900.00	90.00	359.55	6,276.00	2,535.94	4,318.35	4,333.25	0.00	0.00	0.00	
11,000.00	90.00	359.55	6,276.00	2,635.94	4,317.57	4,419.90	0.00	0.00	0.00	
11,100.00	90.00	359.55	6,276.00	2,735.94	4,316.79	4,506.56	0.00	0.00	0.00	
11,200.00	90.00	359.55	6,276.00	2,835.93	4,316.01	4,593.22	0.00	0.00	0.00	
11,300.00	90.00	359.55	6,276.00	2,935.93	4,315.22	4,679.87	0.00	0.00	0.00	
11,400.00	90.00	359.55	6,276.00	3,035.93	4,314.44	4,766.53	0.00	0.00	0.00	
11,500.00	90.00	359.55	6,276.00	3,135.93	4,313.66	4,853.18	0.00	0.00	0.00	
11,600.00	90.00	359.55	6,276.00	3,235.92	4,312.88	4,939.84	0.00	0.00	0.00	
11,700.00	90.00	359.55	6,276.00	3,335.92	4,312.10	5,026.50	0.00	0.00	0.00	
11,800.00	90.00	359.55	6,276.00	3,435.92	4,311.32	5,113.15	0.00	0.00	0.00	
11,900.00	90.00	359.55	6,276.00	3,535.91	4,310.54	5,199.81	0.00	0.00	0.00	
12,000.00	90.00	359.55	6,276.00	3,635.91	4,309.76	5,286.46	0.00	0.00	0.00	
12,100.00	90.00	359.55	6,276.00	3,735.91	4,308.98	5,373.12	0.00	0.00	0.00	
12,200.00	90.00	359.55	6,276.00	3,835.90	4,308.19	5,459.77	0.00	0.00	0.00	
12,300.00	90.00	359.55	6,276.00	3,935.90	4,307.41	5,546.43	0.00	0.00	0.00	
12,400.00	90.00	359.55	6,276.00	4,035.90	4,306.63	5,633.09	0.00	0.00	0.00	
12,500.00	90.00	359.55	6,276.00	4,135.90	4,305.85	5,719.74	0.00	0.00	0.00	
12,600.00	90.00	359.55	6,276.00	4,235.89	4,305.07	5,806.40	0.00	0.00	0.00	
12,700.00	90.00	359.55	6,276.00	4,335.89	4,304.29	5,893.05	0.00	0.00	0.00	
12,800.00	90.00	359.55	6,276.00	4,435.89	4,303.51	5,979.71	0.00	0.00	0.00	
12,900.00	90.00	359.55	6,276.00	4,535.88	4,302.73	6,066.37	0.00	0.00	0.00	
13,000.00	90.00	359.55	6,276.00	4,635.88	4,301.94	6,153.02	0.00	0.00	0.00	
13,100.00	90.00	359.55	6,276.00	4,735.88	4,301.16	6,239.68	0.00	0.00	0.00	
13,200.00	90.00	359.55	6,276.00	4,835.87	4,300.38	6,326.33	0.00	0.00	0.00	
13,300.00	90.00	359.55	6,276.00	4,935.87	4,299.60	6,412.99	0.00	0.00	0.00	
13,400.00	90.00	359.55	6,276.00	5,035.87	4,298.82	6,499.64	0.00	0.00	0.00	
13,500.00	90.00	359.55	6,276.00	5,135.86	4,298.04	6,586.30	0.00	0.00	0.00	
13,600.00	90.00	359.55	6,276.00	5,235.86	4,297.26	6,672.96	0.00	0.00	0.00	
13,700.00	90.00	359.55	6,276.00	5,335.86	4,296.48	6,759.61	0.00	0.00	0.00	
13,800.00	90.00	359.55	6,276.00	5,435.86	4,295.70	6,846.27	0.00	0.00	0.00	
13,900.00	90.00	359.55	6,276.00	5,535.85	4,294.91	6,932.92	0.00	0.00	0.00	
14,000.00	90.00	359.55	6,276.00	5,635.85	4,294.13	7,019.58	0.00	0.00	0.00	
14,100.00	90.00	359.55	6,276.00	5,735.85	4,293.35	7,106.24	0.00	0.00	0.00	
14,200.00	90.00	359.55	6,276.00	5,835.84	4,292.57	7,192.89	0.00	0.00	0.00	
14,300.00	90.00	359.55	6,276.00	5,935.84	4,291.79	7,279.55	0.00	0.00	0.00	
14,400.00	90.00	359.55	6,276.00	6,035.84	4,291.01	7,366.20	0.00	0.00	0.00	
14,500.00	90.00	359.55	6,276.00	6,135.83	4,290.23	7,452.86	0.00	0.00	0.00	
14,600.00	90.00	359.55	6,276.00	6,235.83	4,289.45	7,539.51	0.00	0.00	0.00	
14,700.00	90.00	359.55	6,276.00	6,335.83	4,288.67	7,626.17	0.00	0.00	0.00	
14,800.00	90.00	359.55	6,276.00	6,435.83	4,287.88	7,712.83	0.00	0.00	0.00	
14,900.00	90.00	359.55	6,276.00	6,535.82	4,287.10	7,799.48	0.00	0.00	0.00	
15,000.00	90.00	359.55	6,276.00	6,635.82	4,286.32	7,886.14	0.00	0.00	0.00	
15,100.00	90.00	359.55	6,276.00	6,735.82	4,285.54	7,972.79	0.00	0.00	0.00	

Planning Report

Database:	EDM 5000.16 Single User Db	Local Co-ordinate Reference:	Well RAZOR 10E-0307
Company:	FUNDARE RESOURCES OPERATING COMPANY, LLC	TVD Reference:	KB 25' @ 5056.00usft
Project:	WELD COUNTY	MD Reference:	KB 25' @ 5056.00usft
Site:	SEC 10-T10N-R58W	North Reference:	True
Well:	RAZOR 10E-0307	Survey Calculation Method:	Minimum Curvature
Wellbore:	OWB		
Design:	PROPOSAL 1		

Planned Survey										
Measured Depth (usft)	Inclination (°)	Azimuth (°)	Vertical Depth (usft)	+N/-S (usft)	+E/-W (usft)	Vertical Section (usft)	Dogleg Rate (°/100ft)	Build Rate (°/100ft)	Turn Rate (°/100ft)	
15,200.00	90.00	359.55	6,276.00	6,835.81	4,284.76	8,059.45	0.00	0.00	0.00	
15,300.00	90.00	359.55	6,276.00	6,935.81	4,283.98	8,146.11	0.00	0.00	0.00	
15,400.00	90.00	359.55	6,276.00	7,035.81	4,283.20	8,232.76	0.00	0.00	0.00	
15,500.00	90.00	359.55	6,276.00	7,135.80	4,282.42	8,319.42	0.00	0.00	0.00	
15,600.00	90.00	359.55	6,276.00	7,235.80	4,281.63	8,406.07	0.00	0.00	0.00	
15,700.00	90.00	359.55	6,276.00	7,335.80	4,280.85	8,492.73	0.00	0.00	0.00	
15,729.84	90.00	359.55	6,276.00	7,365.63	4,280.62	8,518.58	0.00	0.00	0.00	
Start DLS 2.00 TFO -90.00										
15,731.73	90.00	359.51	6,276.00	7,367.53	4,280.61	8,520.23	2.00	0.00	-2.00	
Start 198.14 hold at 15731.73 MD										
15,800.00	90.00	359.51	6,276.00	7,435.79	4,280.03	8,579.36	0.00	0.00	0.00	
15,900.00	90.00	359.51	6,276.00	7,535.79	4,279.18	8,665.99	0.00	0.00	0.00	
15,929.87	90.00	359.51	6,276.00	7,565.66	4,278.93	8,691.86	0.00	0.00	0.00	
TD at 15929.87										

Design Targets										
Target Name	Dip Angle (°)	Dip Dir. (°)	TVD (usft)	+N/-S (usft)	+E/-W (usft)	Northing (usft)	Easting (usft)	Latitude		Longitude
BPZ-RAZOR 10E-0307 - hit/miss target - Shape - Point	0.00	0.00	6,276.00	7,365.63	4,280.62	1,565,646.66	3,458,206.04	40.874323°N		103.843108°W
LP-RAZOR 10E-0307 - plan hits target center - Point	0.00	0.00	6,276.00	-205.10	4,339.76	1,558,078.32	3,458,405.30	40.853544°N		103.842899°W
PBHL-RAZOR 10E-0307 - plan hits target center - Point	0.00	0.00	6,276.00	7,565.66	4,278.93	1,565,846.62	3,458,200.65	40.874872°N		103.843114°W

Plan Annotations					
Measured Depth (usft)	Vertical Depth (usft)	Local Coordinates		Comment	
		+N/-S (usft)	+E/-W (usft)		
100.00	100.00	0.00	0.00	Start Build 2.00	
2,146.75	1,977.01	-135.95	687.25	Start 5036.18 hold at 2146.75 MD	
7,182.93	5,781.61	-776.29	3,924.25	Start DLS 10.00 TFO -98.84	
8,158.87	6,276.00	-205.10	4,339.76	Start 7570.96 hold at 8158.87 MD	
15,729.84	6,276.00	7,365.63	4,280.62	Start DLS 2.00 TFO -90.00	
15,731.73	6,276.00	7,367.53	4,280.61	Start 198.14 hold at 15731.73 MD	
15,929.87	6,276.00	7,565.66	4,278.93	TD at 15929.87	