

T1S, R66W

SURFACE HOLE LOCATION: NAD 83
GROUND ELEVATION= 5060.1'
LATITUDE= 39.929877°
LONGITUDE= -104.810241°
ENTRY POINT: NAD 83
LATITUDE= 39.917809°
LONGITUDE= -104.808385°
BOTTOM HOLE LOCATION: NAD 83
LATITUDE= 39.917818°
LONGITUDE= -104.771740°

CERTIFICATE OF SURVEYOR:

THIS IS TO CERTIFY THAT THE ABOVE PLAT WAS PREPARED FROM FIELD NOTES OF ACTUAL SURVEY MADE BY ME OR UNDER MY SUPERVISION AND THAT THE SAME ARE TRUE AND CORRECT TO THE BEST OF MY KNOWLEDGE AND BELIEF. THIS CERTIFICATE DOES NOT REPRESENT A LAND SURVEY PLAT OR IMPROVEMENT SURVEY PLAT AS DEFINED BY C.R.S. 38-51-102 AND CANNOT BE RELIED UPON TO DETERMINE OWNERSHIP.

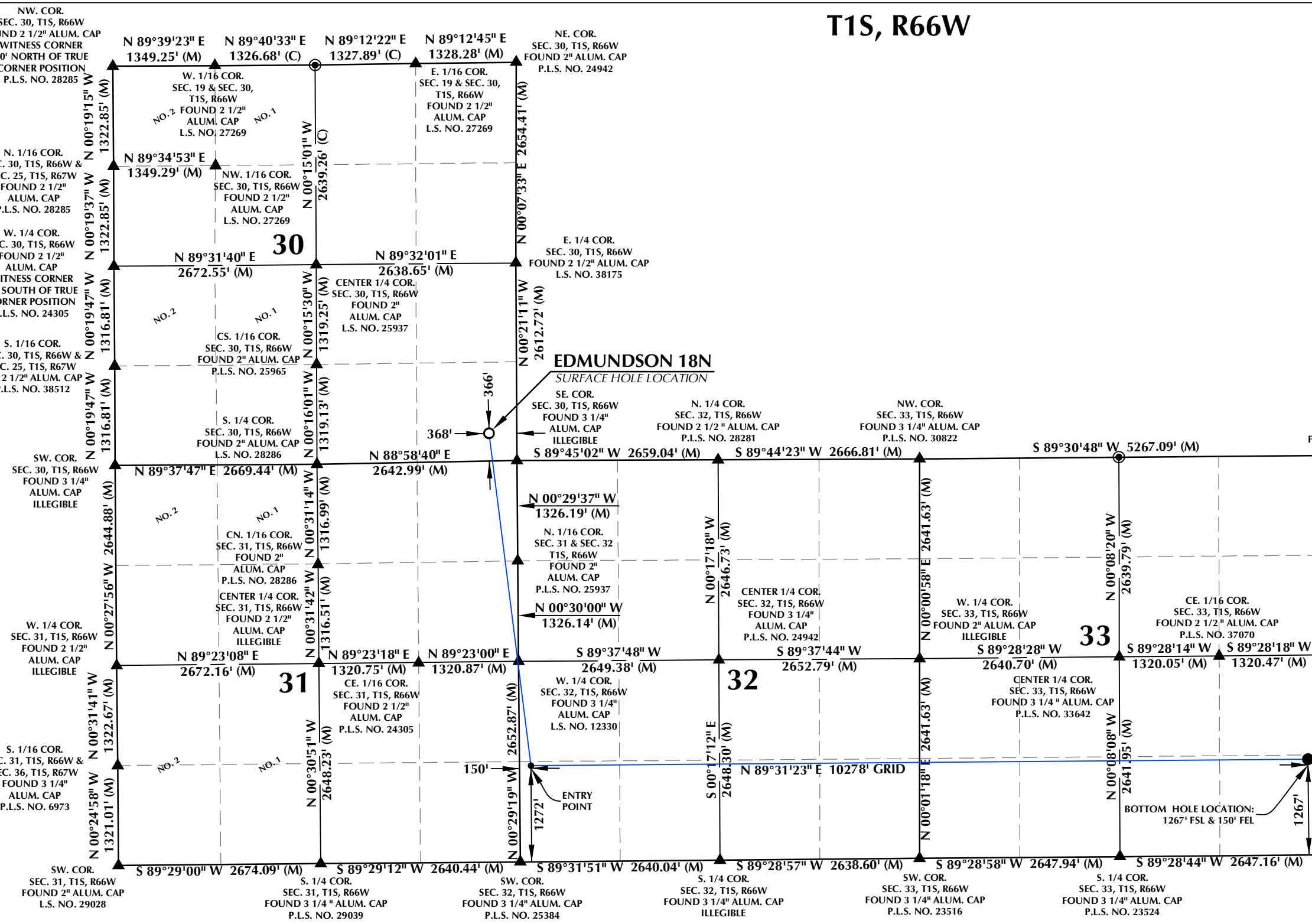
Randall K. French
38512
3/24/23
RANDALL K. FRENCH
PROFESSIONAL LAND SURVEYOR
COLORADO REGISTRATION NUMBER 38512

NOTICE:
ACCORDING TO COLORADO STATE LAW YOU MUST COMMENT AND TAKE ACTION BASED UPON ANY DEFECT IN THIS SURVEY WITHIN THREE YEARS OF FIRST DISCOVERY OF SUCH DEFECT. IN NO EVENT MAY ANY ACTION BE BASED UPON ANY DEFECT IN THIS SURVEY BE COMMENCED MORE THAN TEN YEARS FROM THE DATE OF THE CERTIFICATION SHOWN HEREON.

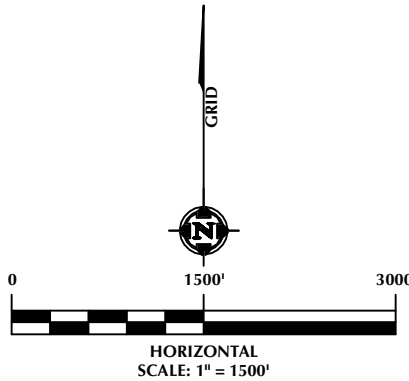
WELL PAD - EDMUNDSON PAD

EDMUNDSON 18N
WELL LOCATION CERTIFICATE
366' FSL & 368' FEL (SESE) (SURFACE HOLE LOCATION)
LOCATED IN SECTION 30
1272' FSL & 150' FWL (SWSW) (ENTRY POINT)
LOCATED IN SECTION 32
1267' FSL & 150' FEL (SESE) (BOTTOM HOLE LOCATION)
LOCATED IN SECTION 33
T1S, R66W, 6TH P.M.
ADAMS COUNTY, COLORADO

DRAFTED BY:	SJM	CHECKED BY:	RKF
DATE DRAFTED:	3/24/23	DATE SURVEYED:	3/13/23
REVISED:		FILE NAME:	22-191

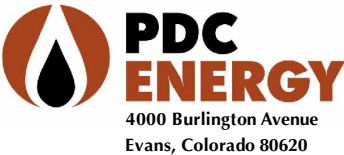


- NOTES:
- ▲ INDICATES SECTION CORNER.
 - INDICATES CALCULATED CORNER.
 - ELEVATION BASED ON NAVD88 (GEOID18).
 - BASIS OF BEARINGS DERIVED FROM COLORADO COORDINATE SYSTEM OF 1983, NORTH ZONE.
 - ALL MEASURED DISTANCES ARE GRID. COMBINED SCALE FACTOR: .99973334 CALCULATED FROM THE NE. CORNER OF SECTION 31, T1S, R66W.
 - OPERATOR: JEREMY GROVES / PDOP = 1.2
 - WELL FOOTAGES ARE MEASURED AT RIGHT ANGLES TO THE SECTION LINES.
 - THE BOTTOM HOLE LOCATION BEARS N89°31'23"E, 10278' FROM THE ENTRY POINT.



LOVELAND OFFICE
6706 North Franklin Avenue
Loveland, Colorado 80538
Phone 970-776-4331

SHERIDAN OFFICE
1095 Saberton Avenue
Sheridan, Wyoming 82801
Phone 307-674-0609



4000 Burlington Avenue
Evans, Colorado 80620