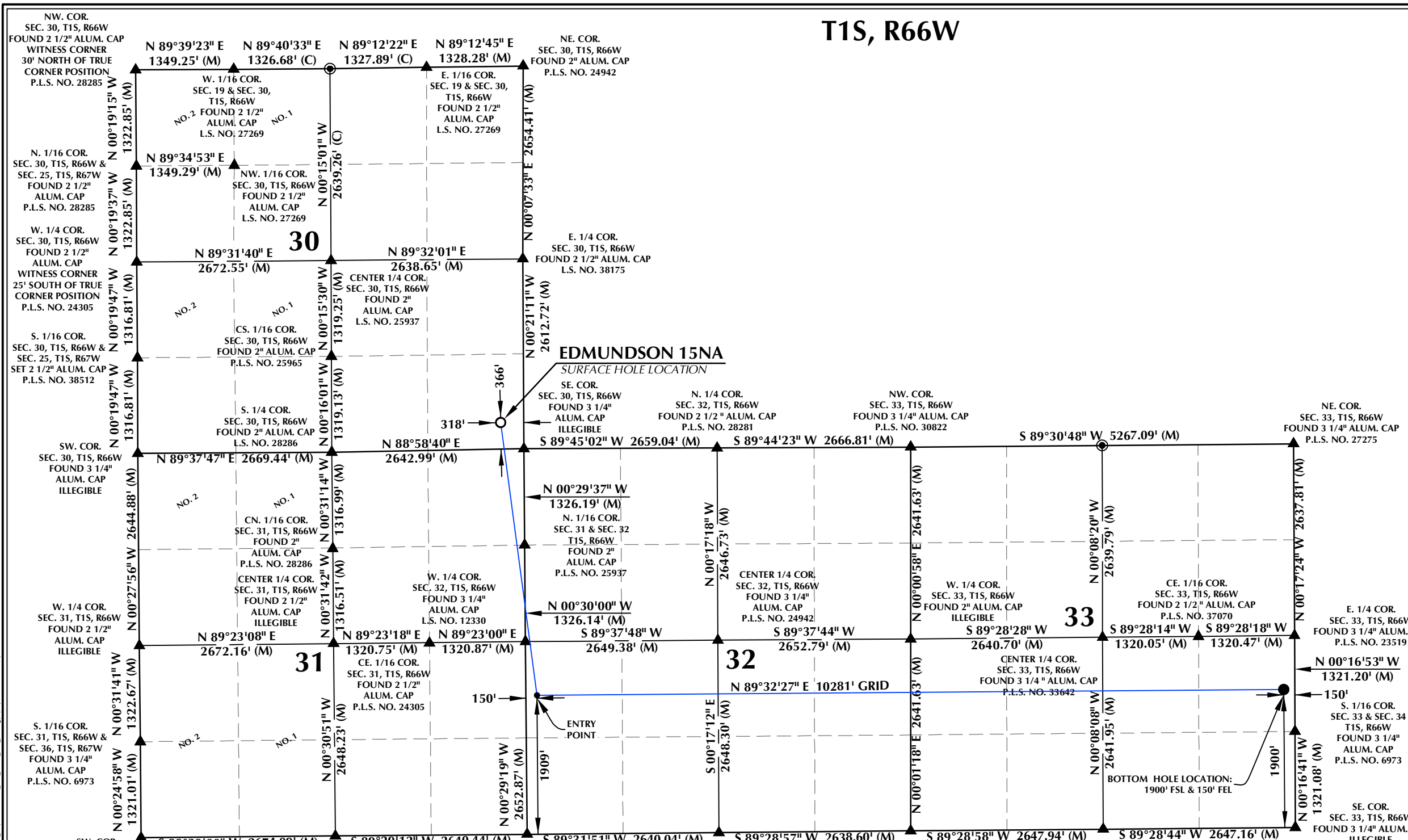


# T1S, R66W

**SURFACE HOLE LOCATION: NAD 83**  
**GROUND ELEVATION= 5060.1'**  
**LATITUDE= 39.929876°**  
**LONGITUDE= -104.810063°**  
**ENTRY POINT: NAD 83**  
**LATITUDE= 39.919558°**  
**LONGITUDE= -104.808386°**  
**BOTTOM HOLE LOCATION: NAD 83**  
**LATITUDE= 39.919558°**  
**LONGITUDE= -104.771733°**



### CERTIFICATE OF SURVEYOR:

THIS IS TO CERTIFY THAT THE ABOVE PLAT WAS PREPARED FROM FIELD NOTES OF ACTUAL SURVEY MADE BY ME OR UNDER MY SUPERVISION AND THAT THE SAME ARE TRUE AND CORRECT TO THE BEST OF MY KNOWLEDGE AND BELIEF. THIS CERTIFICATE DOES NOT REPRESENT A LAND SURVEY PLAT OR IMPROVEMENT SURVEY PLAT AS DEFINED BY C.R.S. 38-51-102 AND CANNOT BE REPLIED UPON TO DETERMINE OWNERSHIP.

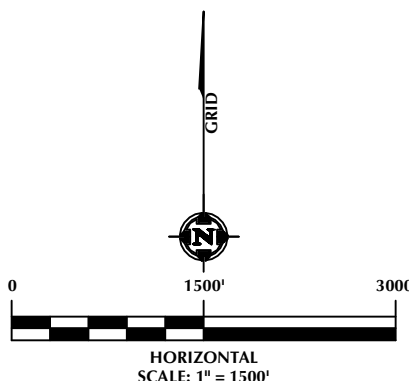
*Randall K. French*  
 38512  
 RANDALL K. FRENCH  
 PROFESSIONAL LAND SURVEYOR  
 COLORADO REGISTRATION NUMBER 38512  
 3/24/23

NOTICE: ACCORDING TO COLORADO STATE LAW YOU MUST COMMENCE ANY LEGAL ACTION BASED UPON ANY DEFECT IN THIS SURVEY WITHIN THREE YEARS OF YOUR FIRST DISCOVERY OF SUCH DEFECT. IN NO EVENT MAY ANY ACTION BE BASED UPON ANY DEFECT IN THIS SURVEY BE COMMENCED MORE THAN TEN YEARS FROM THE DATE ON THE CERTIFICATION SHOWN HEREON.

### WELL PAD - EDMUNDSON PAD

**EDMUNDSON 15NA**  
**WELL LOCATION CERTIFICATE**  
**366' FSL & 318' FEL (SESE) (SURFACE HOLE LOCATION)**  
**LOCATED IN SECTION 30**  
**1909' FSL & 150' FWL (NWSW) (ENTRY POINT)**  
**LOCATED IN SECTION 32**  
**1900' FSL & 150' FEL (NESE) (BOTTOM HOLE LOCATION)**  
**LOCATED IN SECTION 33**  
**T1S, R66W, 6TH P.M.**  
**ADAMS COUNTY, COLORADO**

- NOTES:**
- ▲ INDICATES SECTION CORNER.
  - INDICATES CALCULATED CORNER.
  - ELEVATION BASED ON NAVD88 (GEOID18).
  - BASIS OF BEARINGS DERIVED FROM COLORADO COORDINATE SYSTEM OF 1983, NORTH ZONE.
  - ALL MEASURED DISTANCES ARE GRID.  
COMBINED SCALE FACTOR: .99973334 CALCULATED FROM THE NE CORNER OF SECTION 31, T1S, R66W.
  - OPERATOR: JEREMY GROVES / PDOP = 1.4
  - WELL FOOTAGES ARE MEASURED AT RIGHT ANGLES TO THE SECTION LINES.
  - THE BOTTOM HOLE LOCATION BEARS N89°32'27"E, 10281' FROM THE ENTRY POINT.



**609 CONSULTING, LLC**  
 LOVELAND OFFICE  
 6706 North Franklin Avenue  
 Loveland, Colorado 80538  
 Phone 970-776-4331  
 SHERIDAN OFFICE  
 1095 Saberton Avenue  
 Sheridan, Wyoming 82801  
 Phone 307-674-0609

**PDC ENERGY**  
 4000 Burlington Avenue  
 Evans, Colorado 80620

DRAFTED BY:	SJM	CHECKED BY:	RKF
DATE DRAFTED:	3/24/23	DATE SURVEYED:	3/13/23
REVISED:		FILE NAME:	22-191

K:\PDC ENERGY\2022\2022\_191\_EDMUNDSON\_T1S\_R66W\_SEC\_30\EDMUNDSON\_T1S\_R66W\_SEC\_30\PLATS\EDMUNDSON\_T1S\_R66W\_SEC\_30.dwg, 3/22/2023 2:08:43 PM, smiller