



WELL DETAILS: EDMUNDSON 12C

| +N/-S | +E/-W | Northing | Easting | Latitude | Longitude |
|-------|-------|------------|------------|-----------|-------------|
| 0.0 | 0.0 | 1218105.19 | 3193372.74 | 39.930015 | -104.810462 |

Project: WELD COUNTY
Site: Edmundson Pad
Well: EDMUNDSON 12C
Wellbore: OWB
Design: PLAN #1
Lat: 39.930015
Long: -104.810462
GL: 5052.0
KB: KB 25 @ 5077.0usft



Azimuths to Grid North
True North: -0.45°
Magnetic North: 9.48°

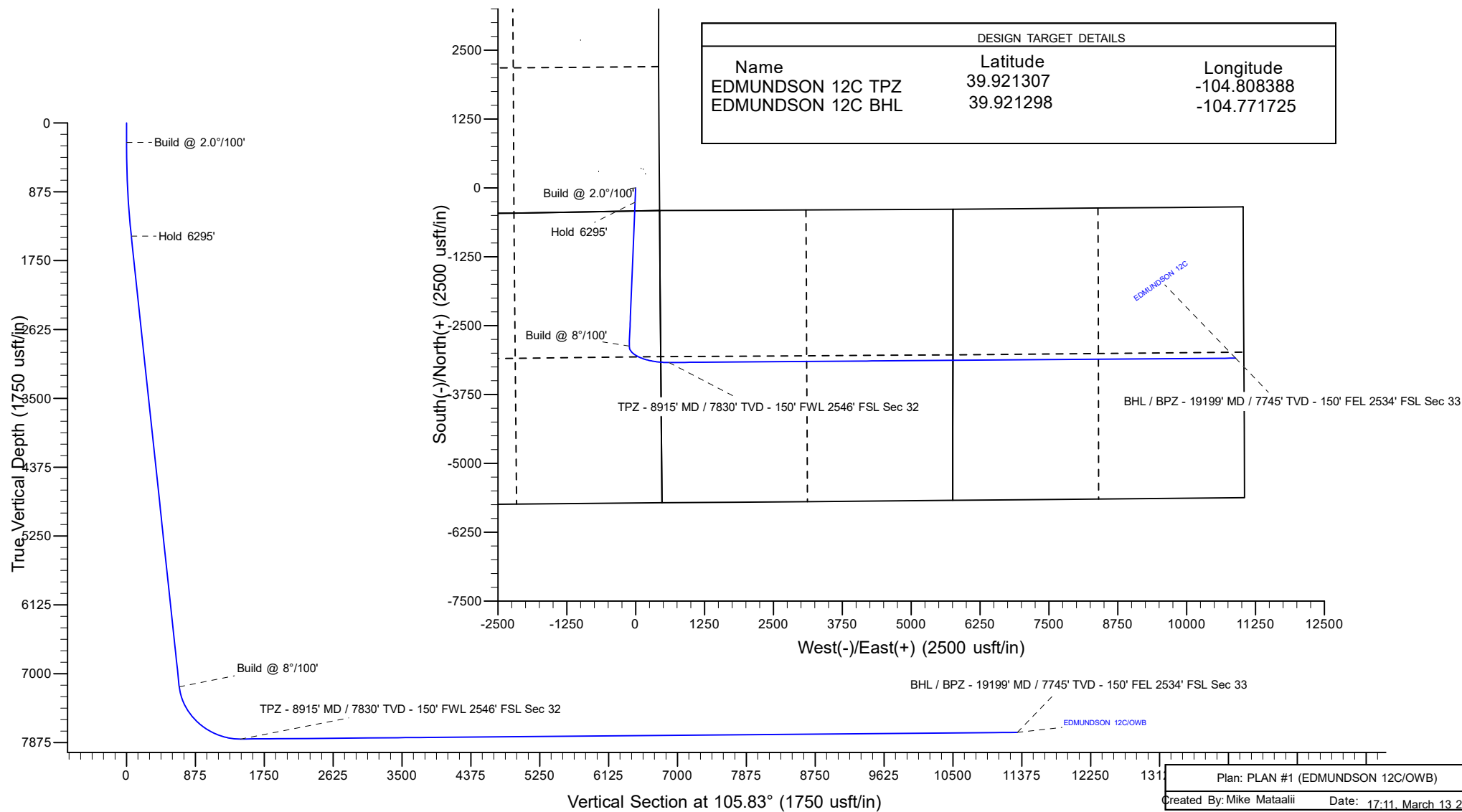
Magnetic Field
Strength: 53709.0nT
Dip Angle: 66.97°
Date: 12/31/2004
Model: IGRF2000

SECTION DETAILS

| MD | Inc | Azi | TVD | +N/-S | +E/-W | Dleg | TFace | VSec | Annotation |
|---------|-------|--------|--------|---------|---------|------|--------|---------|---|
| 0.0 | 0.00 | 0.00 | 0.0 | 0.0 | 0.0 | 0.00 | 0.00 | 0.0 | |
| 250.0 | 0.00 | 0.00 | 250.0 | 0.0 | 0.0 | 0.00 | 0.00 | 0.0 | Build @ 2.0°/100' |
| 1475.9 | 24.52 | 182.34 | 1438.8 | -258.1 | -10.6 | 2.00 | 182.34 | 60.3 | Hold 6295' |
| 7770.8 | 24.52 | 182.34 | 7166.2 | -2868.1 | -117.3 | 0.00 | 0.00 | 669.8 | Build @ 8°/100' |
| 8915.6 | 90.47 | 89.56 | 7830.0 | -3167.7 | 606.5 | 8.00 | -92.34 | 1447.8 | TPZ - 8915' MD / 7830' TVD - 150' FWL 2546' FSL Sec 32 |
| 19199.0 | 90.47 | 89.56 | 7745.0 | -3088.5 | 10889.2 | 0.00 | 0.00 | 11318.7 | BHL / BPZ - 19199' MD / 7745' TVD - 150' FEL 2534' FSL Sec 33 |

DESIGN TARGET DETAILS

| Name | Latitude | Longitude |
|-------------------|-----------|-------------|
| EDMUNDSON 12C TPZ | 39.921307 | -104.808388 |
| EDMUNDSON 12C BHL | 39.921298 | -104.771725 |



PDC Energy Inc.
Anticollision Summary Report

| | | | |
|---------------------------|-------------------|-------------------------------------|----------------------------|
| Company: | PDC - PLANNING DB | Local Co-ordinate Reference: | Well EDMUNDSON 12C |
| Project: | WELD COUNTY | TVD Reference: | KB 25 @ 5077.0usft |
| Reference Site: | Edmundson Pad | MD Reference: | KB 25 @ 5077.0usft |
| Site Error: | 0.0 usft | North Reference: | Grid |
| Reference Well: | EDMUNDSON 12C | Survey Calculation Method: | Minimum Curvature |
| Well Error: | 0.0 usft | Output errors are at | 2.00 sigma |
| Reference Wellbore | OWB | Database: | EDM 5000.15 Single User Db |
| Reference Design: | PLAN #1 | Offset TVD Reference: | Offset Datum |

| | | | |
|-------------------------------------|---|-----------------------|---------------------|
| Reference | PLAN #1 | | |
| Filter type: | NO GLOBAL FILTER: Using user defined selection & filtering criteria | | |
| Interpolation Method: | Stations | Error Model: | ISCWSA |
| Depth Range: | Unlimited | Scan Method: | Closest Approach 3D |
| Results Limited by: | Maximum center-center distance of 2,500.0 usft | Error Surface: | Pedal Curve |
| Warning Levels Evaluated at: | 2.00 Sigma | Casing Method: | Not applied |

| | | | | |
|----------------------------|------------------|--------------------------|------------------|---------------------|
| Survey Tool Program | Date | 3/13/2023 | | |
| From (usft) | To (usft) | Survey (Wellbore) | Tool Name | Description |
| 0.0 | 19,199.0 | PLAN #1 (OWB) | MWD | OWSG MWD - Standard |

| Summary | | | | | | |
|-----------------------------------|---------------------------------|------------------------------|---------------------------------|----------------------------------|-------------------|--------------|
| Site Name | Reference Measured Depth (usft) | Offset Measured Depth (usft) | Distance Between Centres (usft) | Distance Between Ellipses (usft) | Separation Factor | Warning |
| Edmundson Offsets | | | | | | |
| CUTLER 1-A - OWB - OWB | 12,079.3 | 7,816.8 | 770.3 | 524.5 | 3.134 | CC, ES, SF |
| CUTLER 1D - OWB - OWB | 12,877.0 | 7,813.3 | 1,829.1 | 1,563.5 | 6.888 | CC |
| CUTLER 1D - OWB - OWB | 12,900.0 | 7,813.1 | 1,829.2 | 1,563.5 | 6.884 | ES |
| CUTLER 1D - OWB - OWB | 13,000.0 | 7,812.2 | 1,833.2 | 1,566.9 | 6.884 | SF |
| EDMUNDSON LE 33-082HC - OWB - OWB | 761.8 | 761.6 | 92.1 | 85.9 | 14.859 | CC, ES |
| EDMUNDSON LE 33-082HC - OWB - OWB | 19,100.0 | 18,443.0 | 1,545.8 | 975.8 | 2.712 | SF |
| ERGER 1 - OWB - OWB | 11,984.5 | 7,832.6 | 1,761.4 | 1,517.7 | 7.226 | CC |
| ERGER 1 - OWB - OWB | 12,100.0 | 7,831.7 | 1,765.2 | 1,516.9 | 7.109 | ES |
| ERGER 1 - OWB - OWB | 12,400.0 | 7,829.2 | 1,809.8 | 1,551.6 | 7.011 | SF |
| ERNEST H KALLSEN 2 - OWB - OWB | | | | | | Out of range |
| ERNST H KALLSEN 1 - OWB - OWB | | | | | | Out of range |
| EVERETTE DAHLINGER A1 - OWB - OWB | | | | | | Out of range |
| FARNER 1 - OWB - OWB | 13,232.4 | 7,812.3 | 580.9 | 430.4 | 3.861 | CC |
| FARNER 1 - OWB - OWB | 13,300.0 | 7,811.8 | 584.8 | 429.9 | 3.776 | ES, SF |
| FREEMAN 1 - OWB - OWB | 8,327.4 | 7,647.6 | 739.5 | 560.0 | 4.120 | CC |
| FREEMAN 1 - OWB - OWB | 8,350.0 | 7,662.3 | 739.9 | 559.7 | 4.107 | ES |
| FREEMAN 1 - OWB - OWB | 8,400.0 | 7,693.2 | 743.7 | 562.0 | 4.094 | SF |
| FREEMAN 1-A - OWB - OWB | 8,327.4 | 7,641.6 | 739.5 | 560.1 | 4.123 | CC |
| FREEMAN 1-A - OWB - OWB | 8,350.0 | 7,656.3 | 739.9 | 559.8 | 4.110 | ES |
| FREEMAN 1-A - OWB - OWB | 8,400.0 | 7,687.2 | 743.7 | 562.1 | 4.096 | SF |
| GREEN 1 - OWB - OWB | | | | | | Out of range |
| IKE 1 - OWB - OWB | 19,199.0 | 7,803.0 | 2,334.5 | 2,147.3 | 12.474 | CC, ES, SF |
| KIMMEL 12-33 - OWB - OWB | 14,767.6 | 7,808.6 | 931.7 | 617.9 | 2.969 | CC, ES, SF |
| OHD 1 - OWB - OWB | | | | | | Out of range |
| PC 1S-66-2928 - OWB - OWB | 288.2 | 323.8 | 2,233.7 | 2,230.5 | 683.294 | CC |
| PC 1S-66-2928 - OWB - OWB | 300.0 | 333.7 | 2,233.8 | 2,230.4 | 674.962 | ES |
| PC 1S-66-2928 - OWB - OWB | 1,700.0 | 1,700.4 | 2,480.2 | 2,467.6 | 195.884 | SF |
| PC 1S-66-2928 14CDH - OWB - OWB | 0.0 | 17.0 | 2,201.8 | | | |
| PC 1S-66-2928 14CDH - OWB - OWB | 200.0 | 198.6 | 2,202.8 | 2,200.2 | 852.484 | ES |
| PC 1S-66-2928 14CDH - OWB - OWB | 2,700.0 | 3,076.8 | 2,490.3 | 2,464.2 | 95.663 | SF |
| PC 1S-66-2928 17NH - OWB - OWB | 0.0 | 17.0 | 2,181.9 | | | |
| PC 1S-66-2928 17NH - OWB - OWB | 1,600.0 | 2,288.1 | 2,196.9 | 2,179.0 | 122.885 | ES |
| PC 1S-66-2928 17NH - OWB - OWB | 4,600.0 | 5,062.3 | 2,498.7 | 2,449.0 | 50.268 | SF |
| PC 1S-66-2928 17NH - ST01 - ST01 | 0.0 | 17.0 | 2,181.9 | | | |
| PC 1S-66-2928 17NH - ST01 - ST01 | 1,600.0 | 2,288.1 | 2,196.9 | 2,179.0 | 122.885 | ES |
| PC 1S-66-2928 17NH - ST01 - ST01 | 4,600.0 | 5,062.3 | 2,498.7 | 2,449.0 | 50.268 | SF |
| PC 1S-66-2928 19NH - OWB - OWB | 1,911.4 | 2,559.9 | 1,995.5 | 1,973.1 | 89.110 | CC, ES |

CC - Min centre to center distance or convergent point, SF - min separation factor, ES - min ellipse separation

PDC Energy Inc.
Anticollision Summary Report

| | | | |
|---------------------------|-------------------|-------------------------------------|----------------------------|
| Company: | PDC - PLANNING DB | Local Co-ordinate Reference: | Well EDMUNDSON 12C |
| Project: | WELD COUNTY | TVD Reference: | KB 25 @ 5077.0usft |
| Reference Site: | Edmundson Pad | MD Reference: | KB 25 @ 5077.0usft |
| Site Error: | 0.0 usft | North Reference: | Grid |
| Reference Well: | EDMUNDSON 12C | Survey Calculation Method: | Minimum Curvature |
| Well Error: | 0.0 usft | Output errors are at | 2.00 sigma |
| Reference Wellbore | OWB | Database: | EDM 5000.15 Single User Db |
| Reference Design: | PLAN #1 | Offset TVD Reference: | Offset Datum |

| Summary | | | | | | |
|---------------------------------|---------------------------------|------------------------------|---------------------------------|----------------------------------|-------------------|--------------|
| Site Name | Reference Measured Depth (usft) | Offset Measured Depth (usft) | Distance Between Centres (usft) | Distance Between Ellipses (usft) | Separation Factor | Warning |
| Offset Well - Wellbore - Design | | | | | | |
| Edmundson Offsets | | | | | | |
| PC 1S-66-2928 19NH - OWB - OWB | 6,300.0 | 6,517.4 | 2,446.8 | 2,377.2 | 35.108 | SF |
| PC 1S-66-2928 20CDH - OWB - OWB | 2,425.9 | 3,046.0 | 1,912.1 | 1,882.1 | 63.664 | CC |
| PC 1S-66-2928 20CDH - OWB - OWB | 3,600.0 | 4,237.6 | 1,918.0 | 1,873.4 | 42.962 | ES |
| PC 1S-66-2928 20CDH - OWB - OWB | 6,600.0 | 6,915.5 | 2,182.7 | 2,106.6 | 28.680 | SF |
| PC 1S-66-2928 9NH - OWB - OWB | 0.0 | 15.0 | 2,014.4 | | | |
| PC 1S-66-2928 9NH - OWB - OWB | 200.0 | 201.8 | 2,015.4 | 2,012.8 | 777.308 | ES |
| PC 1S-66-2928 9NH - OWB - OWB | 2,300.0 | 2,054.8 | 2,487.5 | 2,468.2 | 128.817 | SF |
| POLLARD 1 - OWB - OWB | | | | | | Out of range |
| PRAIRIE LE 31-369HC - OWB - OWB | 7,966.8 | 16,843.0 | 1,826.1 | 1,632.1 | 9.411 | CC |
| PRAIRIE LE 31-369HC - OWB - OWB | 8,000.0 | 16,853.4 | 1,827.2 | 1,631.8 | 9.350 | ES |
| PRAIRIE LE 31-369HC - OWB - OWB | 8,150.0 | 16,912.3 | 1,856.9 | 1,656.1 | 9.247 | SF |
| REASONER 1 - OWB - OWB | 10,062.7 | 7,862.5 | 1,568.7 | 1,367.7 | 7.805 | CC |
| REASONER 1 - OWB - OWB | 10,100.0 | 7,862.2 | 1,569.1 | 1,366.9 | 7.758 | ES |
| REASONER 1 - OWB - OWB | 10,400.0 | 7,859.7 | 1,604.5 | 1,392.3 | 7.561 | SF |
| REASONER 1-A - OWB - OWB | 10,730.1 | 7,864.0 | 581.4 | 366.5 | 2.705 | CC |
| REASONER 1-A - OWB - OWB | 10,800.0 | 7,863.4 | 585.6 | 366.3 | 2.670 | ES, SF |
| REASONER 1A-X - OWB - OWB | 10,062.7 | 7,870.5 | 1,568.7 | 1,367.6 | 7.799 | CC |
| REASONER 1A-X - OWB - OWB | 10,100.0 | 7,870.2 | 1,569.1 | 1,366.7 | 7.753 | ES |
| REASONER 1A-X - OWB - OWB | 10,400.0 | 7,867.7 | 1,604.5 | 1,392.2 | 7.556 | SF |
| SUPERS 1 - OWB - OWB | 9,400.0 | 7,836.0 | 769.9 | 580.6 | 4.067 | ES, SF |
| SUPERS 1 - OWB - OWB | 9,408.9 | 7,835.9 | 769.8 | 580.6 | 4.068 | CC |

PDC Energy Inc.
Anticollision Summary Report

| | | | |
|---------------------------|-------------------|-------------------------------------|----------------------------|
| Company: | PDC - PLANNING DB | Local Co-ordinate Reference: | Well EDMUNDSON 12C |
| Project: | WELD COUNTY | TVD Reference: | KB 25 @ 5077.0usft |
| Reference Site: | Edmundson Pad | MD Reference: | KB 25 @ 5077.0usft |
| Site Error: | 0.0 usft | North Reference: | Grid |
| Reference Well: | EDMUNDSON 12C | Survey Calculation Method: | Minimum Curvature |
| Well Error: | 0.0 usft | Output errors are at | 2.00 sigma |
| Reference Wellbore | OWB | Database: | EDM 5000.15 Single User Db |
| Reference Design: | PLAN #1 | Offset TVD Reference: | Offset Datum |

| Summary | | | | | | |
|---------------------------------|---------------------------------|------------------------------|---------------------------------|----------------------------------|-------------------|------------------------------------|
| Site Name | Reference Measured Depth (usft) | Offset Measured Depth (usft) | Distance Between Centres (usft) | Distance Between Ellipses (usft) | Separation Factor | Warning |
| Offset Well - Wellbore - Design | | | | | | |
| Edmundson Pad | | | | | | |
| EDMUNDSON 01N - OWB - PLAN #1 | 890.1 | 894.3 | 122.5 | 114.7 | 15.742 | CC |
| EDMUNDSON 01N - OWB - PLAN #1 | 900.0 | 904.1 | 122.5 | 114.6 | 15.524 | ES |
| EDMUNDSON 01N - OWB - PLAN #1 | 1,300.0 | 1,294.7 | 156.0 | 142.1 | 11.271 | SF |
| EDMUNDSON 02N - OWB - PLAN #1 | 953.9 | 957.6 | 110.2 | 101.8 | 13.139 | CC |
| EDMUNDSON 02N - OWB - PLAN #1 | 1,000.0 | 1,003.2 | 110.5 | 101.5 | 12.311 | ES |
| EDMUNDSON 02N - OWB - PLAN #1 | 19,199.0 | 18,312.3 | 2,335.3 | 1,755.2 | 4.026 | SF |
| EDMUNDSON 03N - OWB - PLAN #1 | 1,008.6 | 1,011.7 | 98.3 | 89.8 | 11.523 | CC |
| EDMUNDSON 03N - OWB - PLAN #1 | 1,100.0 | 1,102.3 | 99.5 | 89.7 | 10.110 | ES |
| EDMUNDSON 03N - OWB - PLAN #1 | 19,199.0 | 18,435.8 | 2,120.4 | 1,539.1 | 3.648 | SF |
| EDMUNDSON 04NA - OWB - PLAN #1 | 1,085.2 | 1,088.0 | 86.0 | 76.8 | 9.416 | CC |
| EDMUNDSON 04NA - OWB - PLAN #1 | 1,100.0 | 1,102.7 | 86.0 | 76.6 | 9.211 | ES |
| EDMUNDSON 04NA - OWB - PLAN #1 | 19,199.0 | 18,254.3 | 1,936.5 | 1,365.0 | 3.388 | SF |
| EDMUNDSON 05N - OWB - PLAN #1 | 1,211.1 | 1,213.4 | 74.8 | 64.6 | 7.384 | CC |
| EDMUNDSON 05N - OWB - PLAN #1 | 1,300.0 | 1,301.7 | 75.8 | 64.1 | 6.507 | ES |
| EDMUNDSON 05N - OWB - PLAN #1 | 19,199.0 | 18,483.1 | 1,495.5 | 919.1 | 2.595 | SF |
| EDMUNDSON 06N - OWB - PLAN #1 | 1,259.1 | 1,260.9 | 63.7 | 53.0 | 5.968 | CC |
| EDMUNDSON 06N - OWB - PLAN #1 | 1,300.0 | 1,301.7 | 63.9 | 52.5 | 5.624 | ES |
| EDMUNDSON 06N - OWB - PLAN #1 | 19,199.0 | 18,619.4 | 1,279.2 | 701.3 | 2.214 | SF |
| EDMUNDSON 07NA - OWB - PLAN #1 | 1,342.0 | 1,343.5 | 52.2 | 40.8 | 4.577 | CC |
| EDMUNDSON 07NA - OWB - PLAN #1 | 1,400.0 | 1,401.3 | 52.6 | 40.1 | 4.213 | ES |
| EDMUNDSON 07NA - OWB - PLAN #1 | 19,199.0 | 18,463.7 | 1,117.8 | 568.2 | 2.034 | SF |
| EDMUNDSON 08C - OWB - PLAN #1 | 1,344.1 | 1,345.2 | 42.3 | 30.9 | 3.734 | CC |
| EDMUNDSON 08C - OWB - PLAN #1 | 1,400.0 | 1,400.9 | 42.6 | 30.2 | 3.445 | ES |
| EDMUNDSON 08C - OWB - PLAN #1 | 19,199.0 | 18,888.9 | 845.4 | 259.7 | 1.443 | Collision Avoidance Req., SF |
| EDMUNDSON 09N - OWB - PLAN #1 | 1,425.9 | 1,426.7 | 31.3 | 19.1 | 2.564 | CC |
| EDMUNDSON 09N - OWB - PLAN #1 | 1,600.0 | 1,600.4 | 34.0 | 17.9 | 2.117 | ES |
| EDMUNDSON 09N - OWB - PLAN #1 | 19,199.0 | 18,727.7 | 671.0 | 121.5 | 1.221 | Collision Avoidance Req., SF |
| EDMUNDSON 10N - OWB - PLAN #1 | 1,457.6 | 1,458.1 | 20.7 | 8.2 | 1.654 | Collision Risk Procedures Req., SF |
| EDMUNDSON 10N - OWB - PLAN #1 | 19,199.0 | 18,889.7 | 453.7 | -88.3 | 0.837 | No-Go Zone - Stop Drilling, ES |
| EDMUNDSON 11NA - OWB - PLAN #1 | 2,121.4 | 2,121.7 | 9.3 | -13.0 | 0.415 | No-Go Zone - Stop Drilling, CC |
| EDMUNDSON 11NA - OWB - PLAN #1 | 3,000.0 | 3,000.2 | 11.2 | -23.1 | 0.326 | No-Go Zone - Stop Drilling, SF |
| EDMUNDSON 11NA - OWB - PLAN #1 | 7,448.6 | 7,449.3 | 37.9 | -46.6 | 0.448 | No-Go Zone - Stop Drilling, ES |
| EDMUNDSON 13N - OWB - PLAN #1 | 2,073.3 | 2,055.4 | 131.8 | 110.2 | 6.087 | CC |
| EDMUNDSON 13N - OWB - PLAN #1 | 19,199.0 | 19,048.2 | 301.5 | -153.4 | 0.663 | No-Go Zone - Stop Drilling, ES |
| EDMUNDSON 14N - OWB - PLAN #1 | 1,613.2 | 1,594.7 | 124.2 | 109.0 | 8.184 | CC |
| EDMUNDSON 14N - OWB - PLAN #1 | 19,199.0 | 19,231.7 | 451.9 | -111.0 | 0.803 | No-Go Zone - Stop Drilling, ES |
| EDMUNDSON 15NA - OWB - PLAN #1 | 1,575.9 | 1,557.1 | 115.1 | 100.2 | 7.750 | CC |
| EDMUNDSON 15NA - OWB - PLAN #1 | 1,700.0 | 1,679.2 | 116.2 | 99.5 | 6.956 | ES |
| EDMUNDSON 15NA - OWB - PLAN #1 | 19,199.0 | 19,152.7 | 726.6 | 191.4 | 1.358 | Collision Avoidance Req., SF |
| EDMUNDSON 16C - OWB - PLAN #1 | 1,544.6 | 1,525.5 | 105.8 | 91.2 | 7.211 | CC |
| EDMUNDSON 16C - OWB - PLAN #1 | 1,600.0 | 1,580.2 | 106.1 | 90.6 | 6.876 | ES |
| EDMUNDSON 16C - OWB - PLAN #1 | 19,199.0 | 19,565.6 | 845.3 | 258.7 | 1.441 | Collision Avoidance Req., SF |
| EDMUNDSON 17N - OWB - PLAN #1 | 1,510.4 | 1,491.0 | 86.4 | 71.4 | 5.752 | CC |
| EDMUNDSON 17N - OWB - PLAN #1 | 1,600.0 | 1,579.2 | 87.1 | 70.9 | 5.386 | ES |
| EDMUNDSON 17N - OWB - PLAN #1 | 19,199.0 | 19,468.9 | 1,077.2 | 494.6 | 1.849 | Collision Risk Procedures Req., SF |
| EDMUNDSON 18N - OWB - PLAN #1 | 1,498.4 | 1,478.7 | 77.2 | 61.8 | 5.000 | CC |
| EDMUNDSON 18N - OWB - PLAN #1 | 1,600.0 | 1,578.8 | 78.2 | 61.5 | 4.686 | ES |
| EDMUNDSON 18N - OWB - PLAN #1 | 19,199.0 | 19,661.6 | 1,276.7 | 689.7 | 2.175 | SF |
| EDMUNDSON 19NA - OWB - PLAN #1 | 1,490.3 | 1,470.5 | 68.6 | 52.5 | 4.261 | CC |
| EDMUNDSON 19NA - OWB - PLAN #1 | 1,500.0 | 1,480.0 | 68.6 | 52.4 | 4.237 | ES |
| EDMUNDSON 19NA - OWB - PLAN #1 | 19,199.0 | 19,614.2 | 1,520.0 | 939.8 | 2.620 | SF |
| EDMUNDSON 20C - OWB - PLAN #1 | 1,486.0 | 1,466.0 | 60.7 | 43.7 | 3.575 | CC |
| EDMUNDSON 20C - OWB - PLAN #1 | 1,500.0 | 1,479.7 | 60.7 | 43.6 | 3.551 | ES |

CC - Min centre to center distance or convergent point, SF - min separation factor, ES - min ellipse separation

PDC Energy Inc.
Anticollision Summary Report

| | | | |
|---------------------------|-------------------|-------------------------------------|----------------------------|
| Company: | PDC - PLANNING DB | Local Co-ordinate Reference: | Well EDMUNDSON 12C |
| Project: | WELD COUNTY | TVD Reference: | KB 25 @ 5077.0usft |
| Reference Site: | Edmundson Pad | MD Reference: | KB 25 @ 5077.0usft |
| Site Error: | 0.0 usft | North Reference: | Grid |
| Reference Well: | EDMUNDSON 12C | Survey Calculation Method: | Minimum Curvature |
| Well Error: | 0.0 usft | Output errors are at | 2.00 sigma |
| Reference Wellbore | OWB | Database: | EDM 5000.15 Single User Db |
| Reference Design: | PLAN #1 | Offset TVD Reference: | Offset Datum |

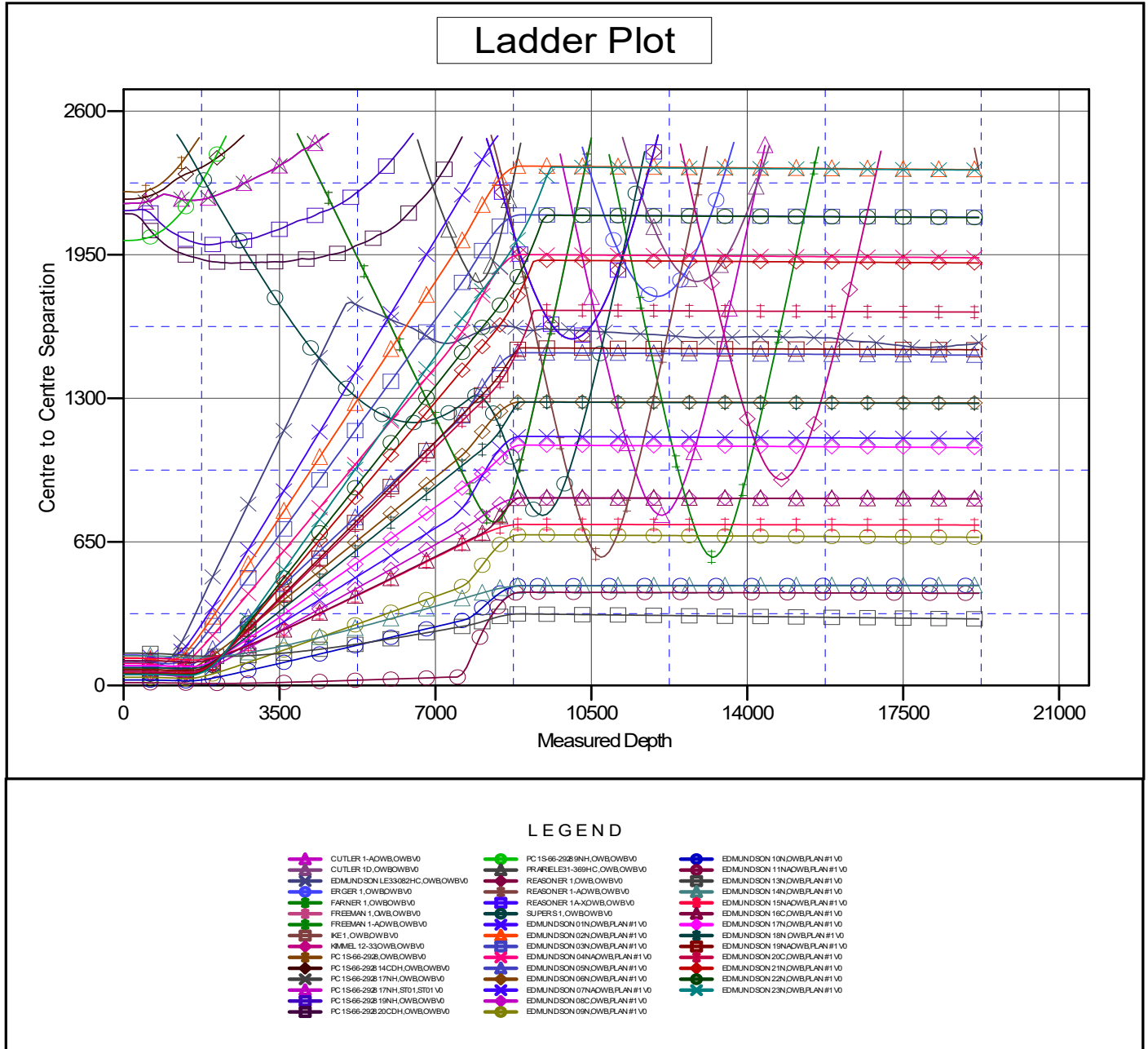
| Summary | | | | | | |
|-------------------------------|---------------------------------|------------------------------|---------------------------------|----------------------------------|-------------------|---------|
| Site Name | Reference Measured Depth (usft) | Offset Measured Depth (usft) | Distance Between Centres (usft) | Distance Between Ellipses (usft) | Separation Factor | Warning |
| Edmundson Pad | | | | | | |
| EDMUNDSON 20C - OWB - PLAN #1 | 19,199.0 | 20,024.7 | 1,690.5 | 1,103.2 | 2.878 | SF |
| EDMUNDSON 21N - OWB - PLAN #1 | 1,485.3 | 1,465.0 | 53.9 | 35.9 | 2.986 | CC |
| EDMUNDSON 21N - OWB - PLAN #1 | 1,500.0 | 1,479.5 | 54.0 | 35.8 | 2.968 | ES |
| EDMUNDSON 21N - OWB - PLAN #1 | 1,600.0 | 1,577.9 | 55.8 | 36.6 | 2.908 | SF |
| EDMUNDSON 22N - OWB - PLAN #1 | 1,487.9 | 1,467.4 | 48.8 | 29.6 | 2.543 | CC |
| EDMUNDSON 22N - OWB - PLAN #1 | 1,500.0 | 1,479.3 | 48.8 | 29.5 | 2.531 | ES |
| EDMUNDSON 22N - OWB - PLAN #1 | 1,600.0 | 1,577.7 | 50.8 | 30.6 | 2.516 | SF |
| EDMUNDSON 23N - OWB - PLAN #1 | 1,492.6 | 1,471.9 | 46.0 | 26.0 | 2.302 | CC |
| EDMUNDSON 23N - OWB - PLAN #1 | 1,500.0 | 1,479.2 | 46.0 | 26.0 | 2.296 | ES, SF |

PDC Energy Inc.
Anticollision Summary Report

| | | | |
|---------------------------|-------------------|-------------------------------------|----------------------------|
| Company: | PDC - PLANNING DB | Local Co-ordinate Reference: | Well EDMUNDSON 12C |
| Project: | WELD COUNTY | TVD Reference: | KB 25 @ 5077.0usft |
| Reference Site: | Edmundson Pad | MD Reference: | KB 25 @ 5077.0usft |
| Site Error: | 0.0 usft | North Reference: | Grid |
| Reference Well: | EDMUNDSON 12C | Survey Calculation Method: | Minimum Curvature |
| Well Error: | 0.0 usft | Output errors are at | 2.00 sigma |
| Reference Wellbore | OWB | Database: | EDM 5000.15 Single User Db |
| Reference Design: | PLAN #1 | Offset TVD Reference: | Offset Datum |

Reference Depths are relative to KB 25 @ 5077.0usft
Offset Depths are relative to Offset Datum
Central Meridian is -105.500000

Coordinates are relative to: EDMUNDSON 12C
Coordinate System is US State Plane 1983, Colorado Northern Zone
Grid Convergence at Surface is: 0.45°



CC - Min centre to center distance or convergent point, SF - min separation factor, ES - min ellipse separation

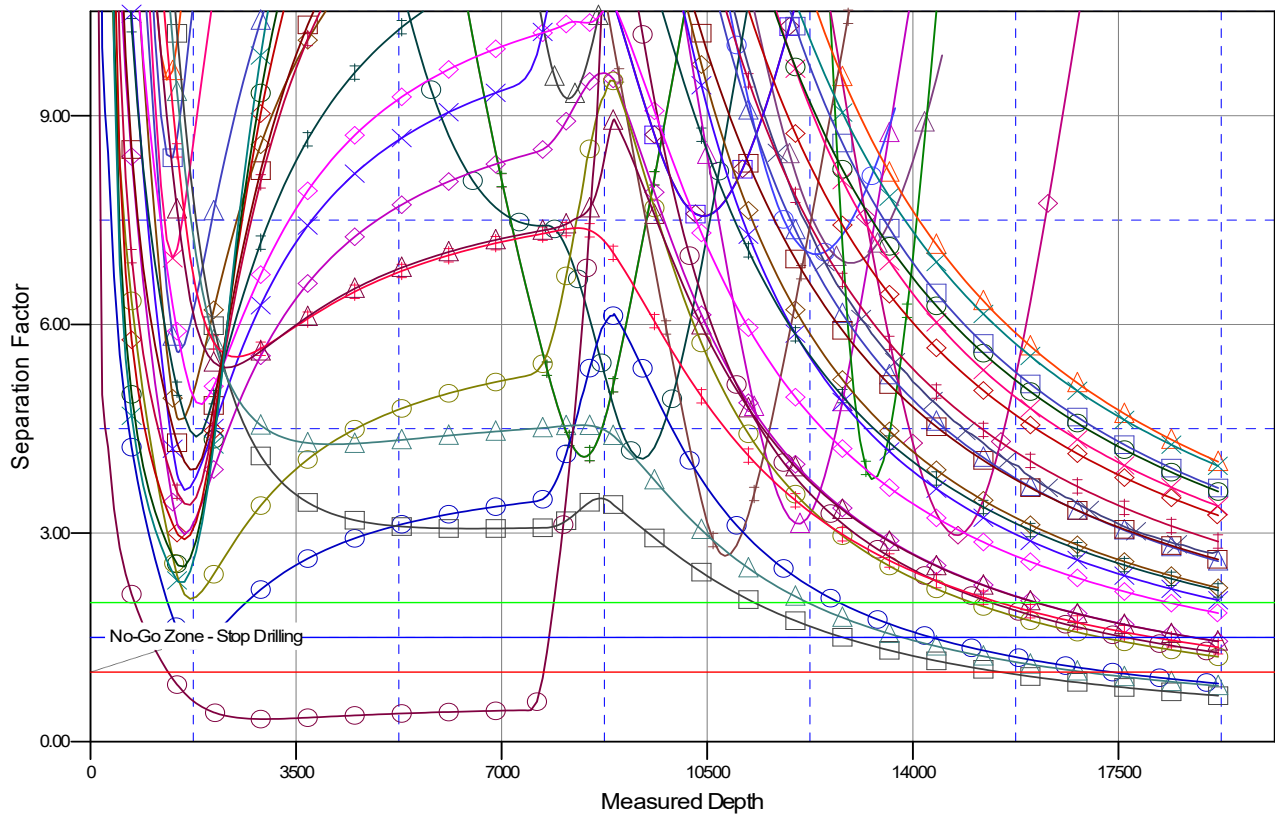
PDC Energy Inc.
Anticollision Summary Report

| | | | |
|---------------------------|-------------------|-------------------------------------|----------------------------|
| Company: | PDC - PLANNING DB | Local Co-ordinate Reference: | Well EDMUNDSON 12C |
| Project: | WELD COUNTY | TVD Reference: | KB 25 @ 5077.0usft |
| Reference Site: | Edmundson Pad | MD Reference: | KB 25 @ 5077.0usft |
| Site Error: | 0.0 usft | North Reference: | Grid |
| Reference Well: | EDMUNDSON 12C | Survey Calculation Method: | Minimum Curvature |
| Well Error: | 0.0 usft | Output errors are at | 2.00 sigma |
| Reference Wellbore | OWB | Database: | EDM 5000.15 Single User Db |
| Reference Design: | PLAN #1 | Offset TVD Reference: | Offset Datum |

Reference Depths are relative to KB 25 @ 5077.0usft
Offset Depths are relative to Offset Datum
Central Meridian is -105.500000

Coordinates are relative to: EDMUNDSON 12C
Coordinate System is US State Plane 1983, Colorado Northern Zone
Grid Convergence at Surface is: 0.45°

Separation Factor Plot



LEGEND

| | | |
|-----------------------------|---------------------------|---------------------------|
| CUTLER 1-AOWBOWBVO | PC 1S66-2928 9NH.OWBOWBVO | EDMUNDSON 10NOWBPLAN#1 V0 |
| CUTLER 1D.OWBOWBVO | PRARELES1-369HC.OWBOWBVO | EDMUNDSON 11NOWBPLAN#1 V0 |
| EDMUNDSON 12-333OWBOWBVO | REASONER 1-OWBOWBVO | EDMUNDSON 13NOWBPLAN#1 V0 |
| ERGER 1.OWBOWBVO | REASONER 1A-XOWBOWBVO | EDMUNDSON 14NOWBPLAN#1 V0 |
| FARNER 1.OWBOWBVO | SUPERS1.OWBOWBVO | EDMUNDSON 15NOWBPLAN#1 V0 |
| FREEMAN 1-AOWBOWBVO | EDMUNDSON 01NOWBPLAN#1 V0 | EDMUNDSON 16NOWBPLAN#1 V0 |
| KEI 1.OWBOWBVO | EDMUNDSON 02NOWBPLAN#1 V0 | EDMUNDSON 17NOWBPLAN#1 V0 |
| KIMMEL 12-333OWBOWBVO | EDMUNDSON 03NOWBPLAN#1 V0 | EDMUNDSON 18NOWBPLAN#1 V0 |
| PC 1S66-2928 14CDH.OWBOWBVO | EDMUNDSON 04NOWBPLAN#1 V0 | EDMUNDSON 19NOWBPLAN#1 V0 |
| PC 1S66-2928 17NH.OWBOWBVO | EDMUNDSON 05NOWBPLAN#1 V0 | EDMUNDSON 20COWBPLAN#1 V0 |
| PC 1S66-2928 17NH.ST01 V0 | EDMUNDSON 06NOWBPLAN#1 V0 | EDMUNDSON 21NOWBPLAN#1 V0 |
| PC 1S66-2928 19NH.OWBOWBVO | EDMUNDSON 07NOWBPLAN#1 V0 | EDMUNDSON 22NOWBPLAN#1 V0 |
| PC 1S66-2928 20CDH.OWBOWBVO | EDMUNDSON 08COWBPLAN#1 V0 | EDMUNDSON 23NOWBPLAN#1 V0 |
| | EDMUNDSON 09NOWBPLAN#1 V0 | |