

T1S, R66W

SURFACE HOLE LOCATION: NAD 83  
GROUND ELEVATION= 5060.2'  
LATITUDE= 39.930015°  
LONGITUDE= -104.810462°  
ENTRY POINT: NAD 83  
LATITUDE= 39.921307°  
LONGITUDE= -104.808388°  
BOTTOM HOLE LOCATION: NAD 83  
LATITUDE= 39.921298°  
LONGITUDE= -104.771725°

CERTIFICATE OF SURVEYOR:

THIS IS TO CERTIFY THAT THE ABOVE PLAT WAS PREPARED FROM FIELD NOTES OF ACTUAL SURVEY MADE BY ME OR UNDER MY SUPERVISION AND THAT THE SAME ARE TRUE AND CORRECT TO THE BEST OF MY KNOWLEDGE AND BELIEF. THIS CERTIFICATE DOES NOT REPRESENT A LAND SURVEY PLAT OR IMPROVEMENT SURVEY PLAT AS DEFINED BY C.R.S. 38-51-102 AND CANNOT BE RELIED UPON TO DETERMINE OWNERSHIP.

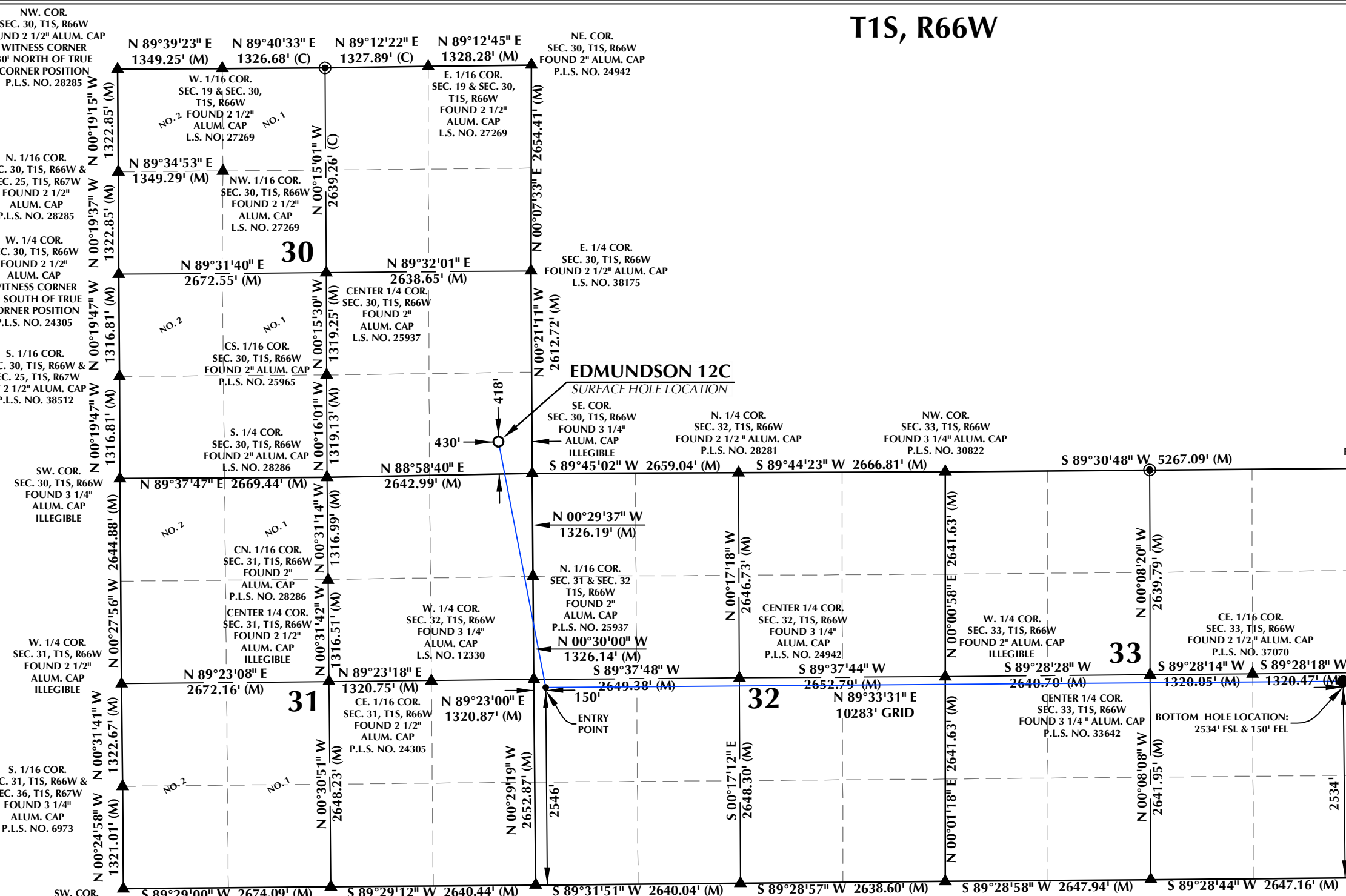
*Randall K. French*  
3/24/23  
RANDALL K. FRENCH  
PROFESSIONAL LAND SURVEYOR  
COLORADO REGISTRATION NUMBER 38512

NOTICE:  
ACCORDING TO COLORADO STATE LAW YOU MUST COMMENT AND TAKE ACTION BASED UPON ANY DEFECT IN THIS SURVEY WITHIN THREE YEARS OF FIRST DISCOVERY OF SUCH DEFECT. IN NO EVENT MAY ANY ACTION BE BASED UPON ANY DEFECT IN THIS SURVEY BE COMMENCED MORE THAN TEN YEARS FROM THE DATE ON THE CERTIFICATION SHOWN HEREON.

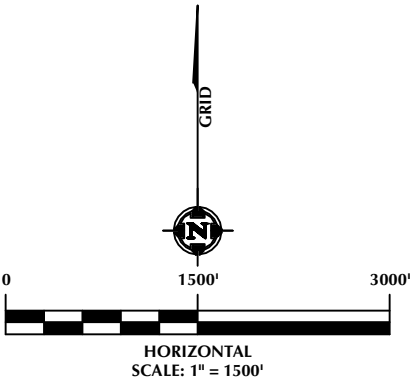
WELL PAD - EDMUNDSON PAD

EDMUNDSON 12C  
WELL LOCATION CERTIFICATE  
418' FSL & 430' FEL (SESE) (SURFACE HOLE LOCATION)  
LOCATED IN SECTION 30  
2546' FSL & 150' FWL (NWSW) (ENTRY POINT)  
LOCATED IN SECTION 32  
2534' FSL & 150' FEL (NESE) (BOTTOM HOLE LOCATION)  
LOCATED IN SECTION 33  
T1S, R66W, 6TH P.M.  
ADAMS COUNTY, COLORADO

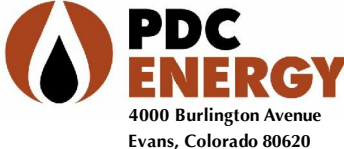
|               |         |                |         |
|---------------|---------|----------------|---------|
| DRAFTED BY:   | SJM     | CHECKED BY:    | RKF     |
| DATE DRAFTED: | 3/24/23 | DATE SURVEYED: | 3/13/23 |
| REVISED:      |         | FILE NAME:     | 22-191  |



- NOTES:
- ▲ INDICATES SECTION CORNER.
  - INDICATES CALCULATED CORNER.
  - ELEVATION BASED ON NAVD88 (GEOID18).
  - BASIS OF BEARINGS DERIVED FROM COLORADO COORDINATE SYSTEM OF 1983, NORTH ZONE.
  - ALL MEASURED DISTANCES ARE GRID.  
COMBINED SCALE FACTOR: .99973334 CALCULATED FROM THE NE. CORNER OF SECTION 31, T1S, R66W.
  - OPERATOR: JEREMY GROVES / PDOP = 1.2
  - WELL FOOTAGES ARE MEASURED AT RIGHT ANGLES TO THE SECTION LINES.
  - THE BOTTOM HOLE LOCATION BEARS N89°33'31"E, 10283' FROM THE ENTRY POINT.



LOVELAND OFFICE  
6706 North Franklin Avenue  
Loveland, Colorado 80538  
Phone 970-776-4331  
  
SHERIDAN OFFICE  
1095 Saberton Avenue  
Sheridan, Wyoming 82801  
Phone 307-674-0609



4000 Burlington Avenue  
Evans, Colorado 80620