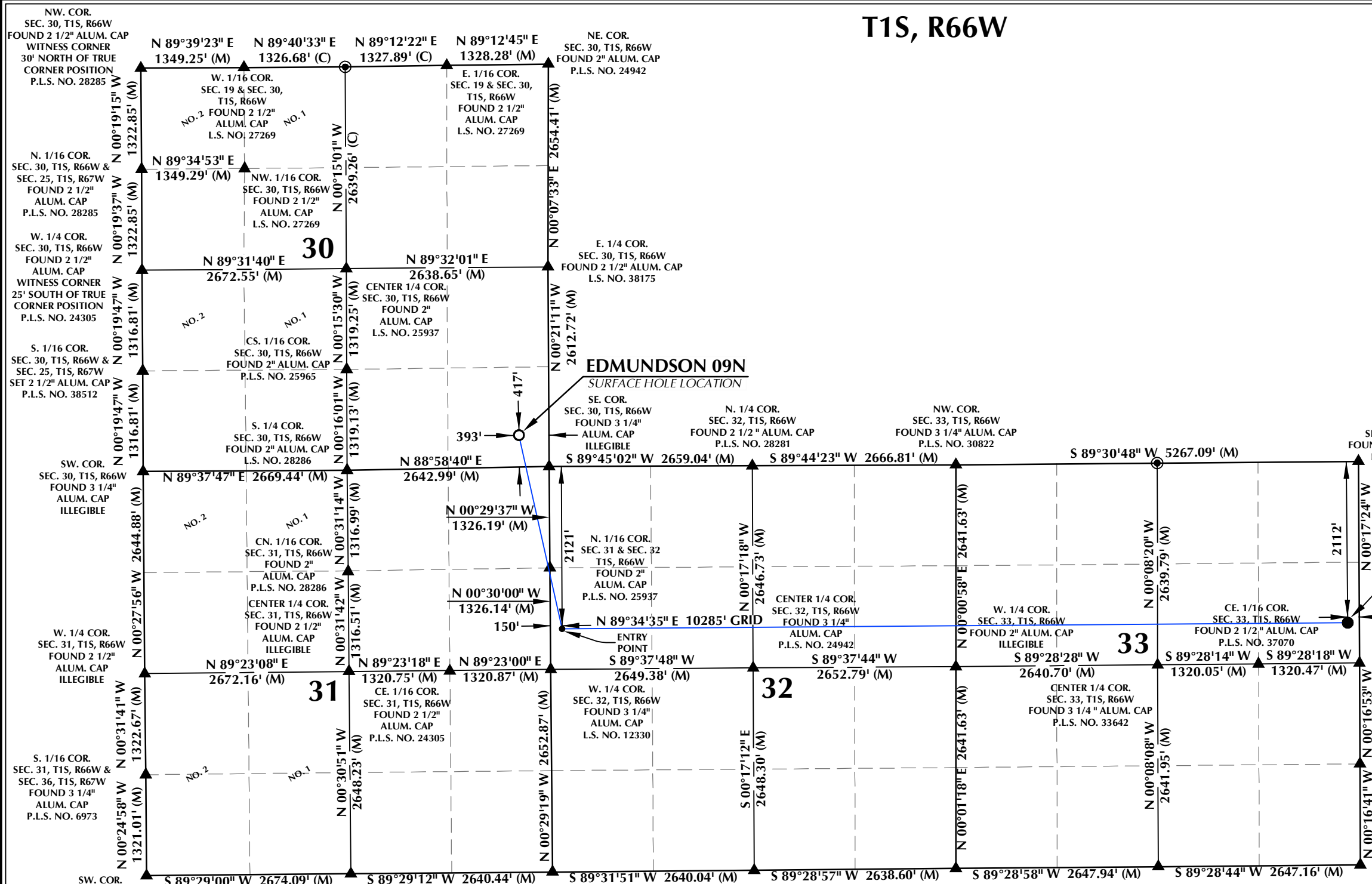


T1S, R66W



SURFACE HOLE LOCATION: NAD 83
 GROUND ELEVATION= 5060.2'
 LATITUDE= 39.930015°
 LONGITUDE= -104.810329°
 ENTRY POINT: NAD 83
 LATITUDE= 39.923056°
 LONGITUDE= -104.808390°
BOTTOM HOLE LOCATION: NAD 83
 LATITUDE= 39.923038°
 LONGITUDE= -104.771718°

CERTIFICATE OF SURVEYOR:

THIS IS TO CERTIFY THAT THE ABOVE PLAT WAS PREPARED FROM FIELD NOTES OF ACTUAL SURVEY MADE BY ME OR UNDER MY SUPERVISION AND THAT THE SAME ARE TRUE AND CORRECT TO THE BEST OF MY KNOWLEDGE AND BELIEF. THIS CERTIFICATE DOES NOT REPRESENT A LAND SURVEY PLAT OR IMPROVEMENT SURVEY PLAT AS DEFINED BY C.R.S. 38-51-102 AND CANNOT BE RAISED UPON TO DETERMINE OWNERSHIP.

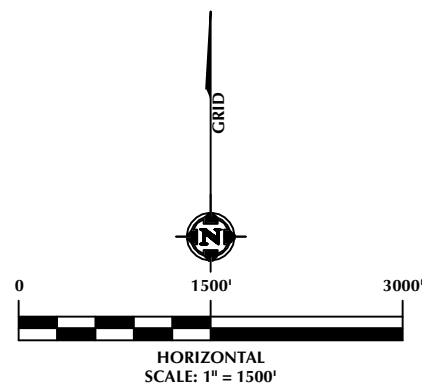
Randall K. French
 RANDALL K. FRENCH
 PROFESSIONAL LAND SURVEYOR
 COLORADO REGISTRATION NUMBER 38512
 3/24/23

NOTICE: ACCORDING TO COLORADO STATE LAW YOU MUST COMMENCE ANY LEGAL ACTION BASED UPON ANY DEFECT IN THIS SURVEY WITHIN THREE YEARS OF YOUR FIRST DISCOVERY OF SUCH DEFECT. IN NO EVENT MAY ANY ACTION BE BASED UPON ANY DEFECT IN THIS SURVEY BE COMMENCED MORE THAN TEN YEARS FROM THE DATE ON THE CERTIFICATION SHOWN HEREON.

WELL PAD - EDMUNDSON PAD

EDMUNDSON 09N
 WELL LOCATION CERTIFICATE
 417' FSL & 393' FEL (SESE) (SURFACE HOLE LOCATION)
 LOCATED IN SECTION 30
 2121' FNL & 150' FWL (SWNW) (ENTRY POINT)
 LOCATED IN SECTION 32
 2112' FNL & 150' FEL (SENE) (BOTTOM HOLE LOCATION)
 LOCATED IN SECTION 33
 T1S, R66W, 6TH P.M.
 ADAMS COUNTY, COLORADO

- NOTES:**
- ▲ INDICATES SECTION CORNER.
 - INDICATES CALCULATED CORNER.
 - ELEVATION BASED ON NAVD88 (GEOID18).
 - BASIS OF BEARINGS DERIVED FROM COLORADO COORDINATE SYSTEM OF 1983, NORTH ZONE.
 - ALL MEASURED DISTANCES ARE GRID.
COMBINED SCALE FACTOR: .99973334 CALCULATED FROM THE NE. CORNER OF SECTION 31, T1S, R66W.
 - OPERATOR: JEREMY GROVES / PDOP = 1.2
 - WELL FOOTAGES ARE MEASURED AT RIGHT ANGLES TO THE SECTION LINES.
 - THE BOTTOM HOLE LOCATION BEARS N89°34'35"E, 10285' FROM THE ENTRY POINT.



609 CONSULTING, LLC
 LOVELAND OFFICE
 6706 North Franklin Avenue
 Loveland, Colorado 80538
 Phone 970-776-4331
 SHERIDAN OFFICE
 1095 Saberton Avenue
 Sheridan, Wyoming 82801
 Phone 307-674-0609

PDC ENERGY
 4000 Burlington Avenue
 Evans, Colorado 80620

DRAFTED BY:	SJM	CHECKED BY:	RKF
DATE DRAFTED:	3/24/23	DATE SURVEYED:	3/13/23
REVISED:		FILE NAME:	22-191

K:\PDC ENERGY\2022\2022_191_EDMUNDSON_T1S_R66W_SEC_30\EDMUNDSON_T1S_R66W_SEC_30\PLATS\EDMUNDSON_T1S_R66W_SEC_30.dwg, 3/22/2023 2:08:28 PM, smiller