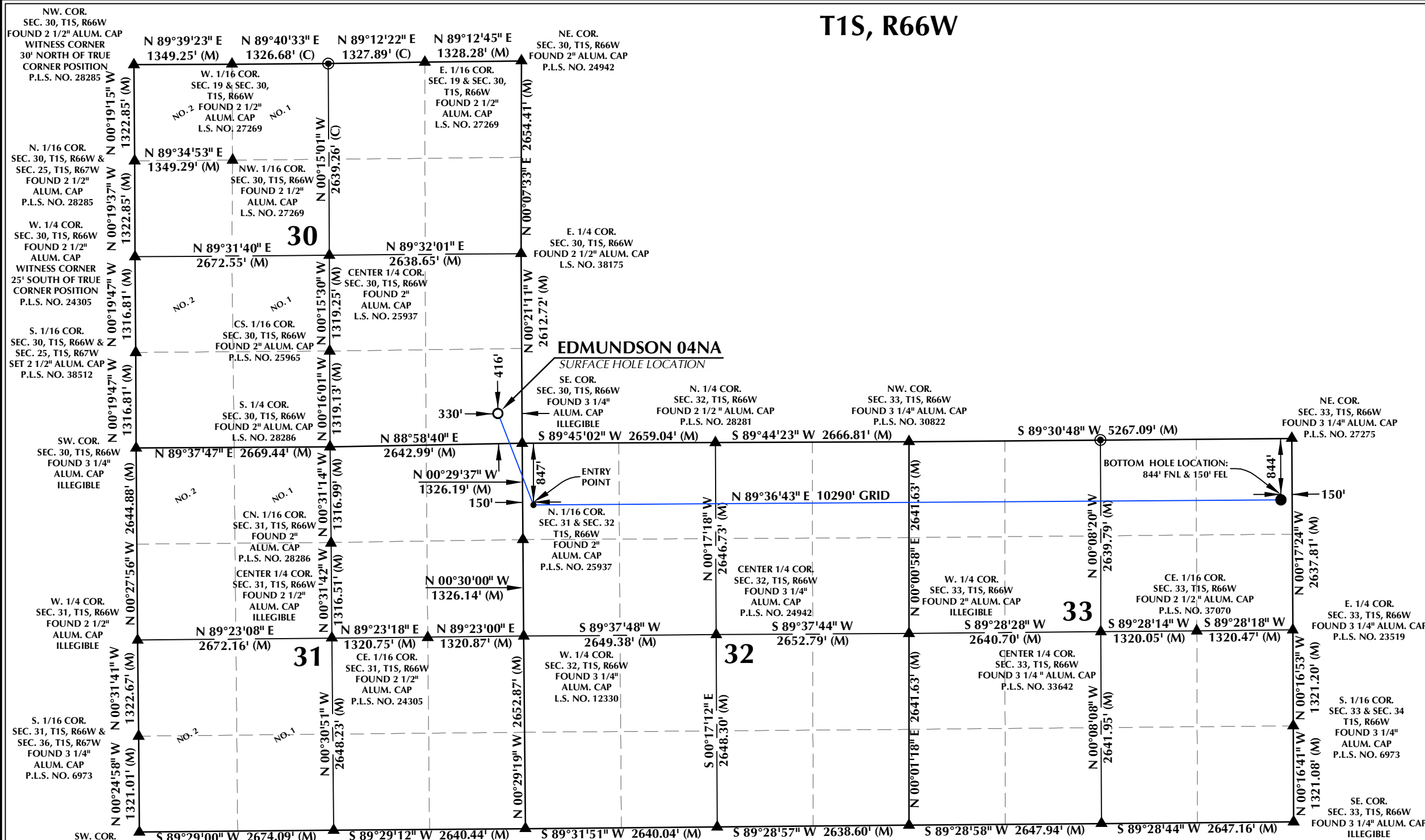


# T1S, R66W



**SURFACE HOLE LOCATION: NAD 83**  
 GROUND ELEVATION= 5060.2'  
 LATITUDE= 39.930013°  
 LONGITUDE= -104.810106°  
**ENTRY POINT: NAD 83**  
 LATITUDE= 39.926554°  
 LONGITUDE= -104.808394°  
**BOTTOM HOLE LOCATION: NAD 83**  
 LATITUDE= 39.926519°  
 LONGITUDE= -104.771704°

### CERTIFICATE OF SURVEYOR:

THIS IS TO CERTIFY THAT THE ABOVE PLAT WAS PREPARED FROM FIELD NOTES OF ACTUAL SURVEY MADE BY ME OR UNDER MY SUPERVISION AND TO THE BEST OF MY KNOWLEDGE AND BELIEF THIS CERTIFICATE DOES NOT REPRESENT A LAND SURVEY PLAT OR IMPROVEMENT SURVEY PLAT AS DEFINED BY C.R.S. 38-51-102 AND CANNOT BE RELIED UPON TO DETERMINE OWNERSHIP.

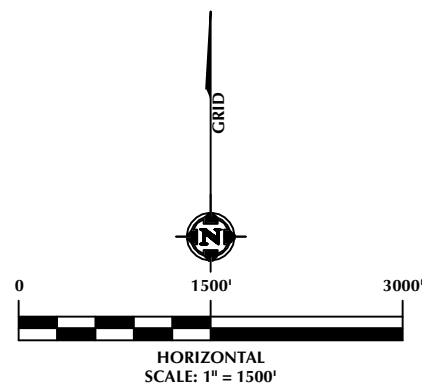
*Randall K. French*  
 RANDALL K. FRENCH  
 PROFESSIONAL LAND SURVEYOR  
 COLORADO REGISTRATION NUMBER 38512  
 3/24/23

NOTICE: ACCORDING TO COLORADO STATE LAW YOU MUST COMMENT AND TAKE ACTION BASED UPON ANY DEFECT IN THIS SURVEY WITHIN THREE YEARS OF FIRST DISCOVERY OF SUCH DEFECT. IN NO EVENT MAY ANY ACTION BE BASED UPON ANY DEFECT IN THIS SURVEY BE COMMENCED MORE THAN TEN YEARS FROM THE DATE ON THE CERTIFICATION SHOWN HEREON.

### WELL PAD - EDMUNDSON PAD

**EDMUNDSON 04NA**  
**WELL LOCATION CERTIFICATE**  
 416' FSL & 330' FEL (SESE) (SURFACE HOLE LOCATION)  
 LOCATED IN SECTION 30  
 847' FNL & 150' FWL (NWNW) (ENTRY POINT)  
 LOCATED IN SECTION 32  
 844' FNL & 150' FEL (NENE) (BOTTOM HOLE LOCATION)  
 LOCATED IN SECTION 33  
 T1S, R66W, 6TH P.M.  
 ADAMS COUNTY, COLORADO

- NOTES:**
- ▲ INDICATES SECTION CORNER.
  - INDICATES CALCULATED CORNER.
  - ELEVATION BASED ON NAVD88 (GEOID18).
  - BASIS OF BEARINGS DERIVED FROM COLORADO COORDINATE SYSTEM OF 1983, NORTH ZONE.
  - ALL MEASURED DISTANCES ARE GRID.  
COMBINED SCALE FACTOR: .99973334 CALCULATED FROM THE NE CORNER OF SECTION 31, T1S, R66W.
  - OPERATOR: JEREMY GROVES / PDOP = 1.4
  - WELL FOOTAGES ARE MEASURED AT RIGHT ANGLES TO THE SECTION LINES.
  - THE BOTTOM HOLE LOCATION BEARS N89°36'43"E, 10290' FROM THE ENTRY POINT.



**609 CONSULTING, LLC**  
 LOVELAND OFFICE  
 6706 North Franklin Avenue  
 Loveland, Colorado 80538  
 Phone 970-776-4331  
 SHERIDAN OFFICE  
 1095 Saberton Avenue  
 Sheridan, Wyoming 82801  
 Phone 307-674-0609

**PDC ENERGY**  
 4000 Burlington Avenue  
 Evans, Colorado 80620

DRAFTED BY:	SJM	CHECKED BY:	RKF
DATE DRAFTED:	3/24/23	DATE SURVEYED:	3/13/23
REVISED:		FILE NAME:	22-191

K:\PDC ENERGY\2022\2022\_191\_EDMUNDSON\_T1S\_R66W\_SEC\_30\PLATS\EDMUNDSON\_T1S\_R66W\_SEC\_30.dwg, 3/22/2023 2:08:15 PM, smiller