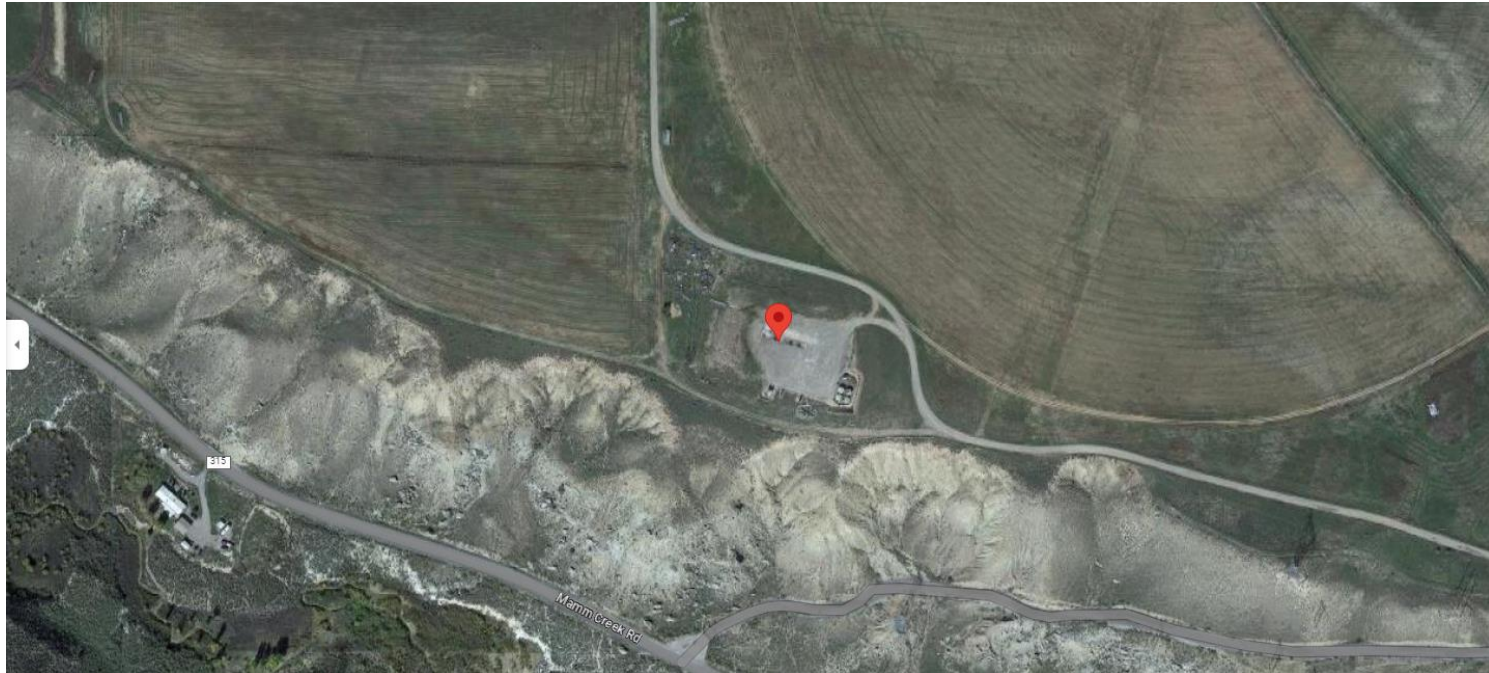


**Storm Water Management and Erosion control**  
**Location Name: TEP ROCKY MOUNTAIN LLC GENTRY E Pad**  
**Location #: 335547**



**Location Overview: Location is within a 411a Surface Water  
Intermediate Buffer & is approximately 327 yards from  
Mamm Creek  
Section/Township/Range: 17 6S92W**



**COLORADO**  
Oil & Gas Conservation  
Commission  
Department of Natural Resources

**Storm water Management and Erosion control**  
**Location Name: TEP ROCKY MOUNTAIN LLC GENTRY E Pad**  
**Location #: 335547**



**North West corner of location.**



**North East corner of location.**



**South West corner of location.**



**South East corner of location.**



**Storm water Management and Erosion control**  
**Location Name: TEP ROCKY MOUNTAIN LLC GENTRY E Pad**  
**Location #: 335547**

Network:Feb 14, 2023 at 1:18:11 PM M



**Photo # 9008 From Inspection 699805442  
conducted on 02/14/2023 Slope stabilization  
BMP's insufficient**

Jun 20, 2023 at 9:06:12 A



**Photo # 1020 Slope stabilization BMP's insufficient**



**Storm water Management and Erosion control**  
**Location Name: TEP ROCKY MOUNTAIN LLC GENTRY E Pad**  
**Location #: 335547**



**Photo # 9009 From Inspection 699805442  
conducted on 02/14/2023 Slope stabilization  
BMP's insufficient**



**Photo # 1028 Slope stabilization BMP's insufficient**



**Storm water Management and Erosion control**  
**Location Name: TEP ROCKY MOUNTAIN LLC GENTRY E Pad**  
**Location #: 335547**

Network:Feb 14, 2023 at 1:18:21 PM M



**Photo # 9010 From Inspection 699805442**  
**conducted on 02/14/2023 Run on to location not**  
**being controlled**

Jun 20, 2023 at 9:11:37 A

C



**Photo # 1031 Run on to location not being**  
**controlled**

**Storm water Management and Erosion control**  
**Location Name: TEP ROCKY MOUNTAIN LLC GENTRY E Pad**  
**Location #: 335547**



**Photo # From Inspection 699805442 conducted on 02/14/2023 Slope stabilization BMP's insufficient**



**Photo # 1053 Slope stabilization BMP's insufficient**



**Storm water Management and Erosion control**  
**Location Name: TEP ROCKY MOUNTAIN LLC GENTRY E Pad**  
**Location #: 335547**



**Photo # 1020 Slope stabilization BMP's insufficient/Run on to location not being controlled**



**Photo # 1024 Slope stabilization BMP's insufficient  
Run on to location not being controlled**

**Storm water Management and Erosion control**  
**Location Name: TEP ROCKY MOUNTAIN LLC GENTRY E Pad**  
**Location #: 335547**



**Photo # 1026 Slope stabilization BMP's insufficient**



**Photo # 1027 Slope stabilization BMP's insufficient**



**Storm water Management and Erosion control**  
**Location Name: TEP ROCKY MOUNTAIN LLC GENTRY E Pad**  
**Location #: 335547**



**Photo # 1029 Slope stabilization BMP's insufficient**



**Photo # 1030 Slope stabilization BMP's insufficient**



**Storm water Management and Erosion control**  
**Location Name: TEP ROCKY MOUNTAIN LLC GENTRY E Pad**  
**Location #: 335547**



**Photo # 1033 Slope stabilization BMP's insufficient/Run on to location not being controlled**



**Photo # 1037 Slope stabilization BMP's insufficient/Run on to location not being controlled**



**Storm water Management and Erosion control**  
**Location Name: TEP ROCKY MOUNTAIN LLC GENTRY E Pad**  
**Location #: 335547**



**Photo # 1041 Slope stabilization BMP's insufficient**



**Photo # 1042 Slope stabilization BMP's insufficient/Run on to location not being controlled**



**Storm water Management and Erosion control**  
**Location Name: TEP ROCKY MOUNTAIN LLC GENTRY E Pad**  
**Location #: 335547**



**Photo # 1043 Slope stabilization BMP's insufficient/Run  
on to location not being controlled**



**Photo # 1044 Slope stabilization BMP's insufficient/Run  
on to location not being controlled**



**Storm water Management and Erosion control**  
**Location Name: TEP ROCKY MOUNTAIN LLC GENTRY E Pad**  
**Location #: 335547**



**Photo # 1050 Slope stabilization BMP's insufficient**



**Photo # 1051 Slope stabilization BMP's insufficient/Run on to location not being controlled**

**Storm water Management and Erosion control**  
**Location Name: TEP ROCKY MOUNTAIN LLC GENTRY E Pad**  
**Location #: 335547**



**Photo # 1052 Slope stabilization BMP's insufficient/Run  
on to location not being controlled**