

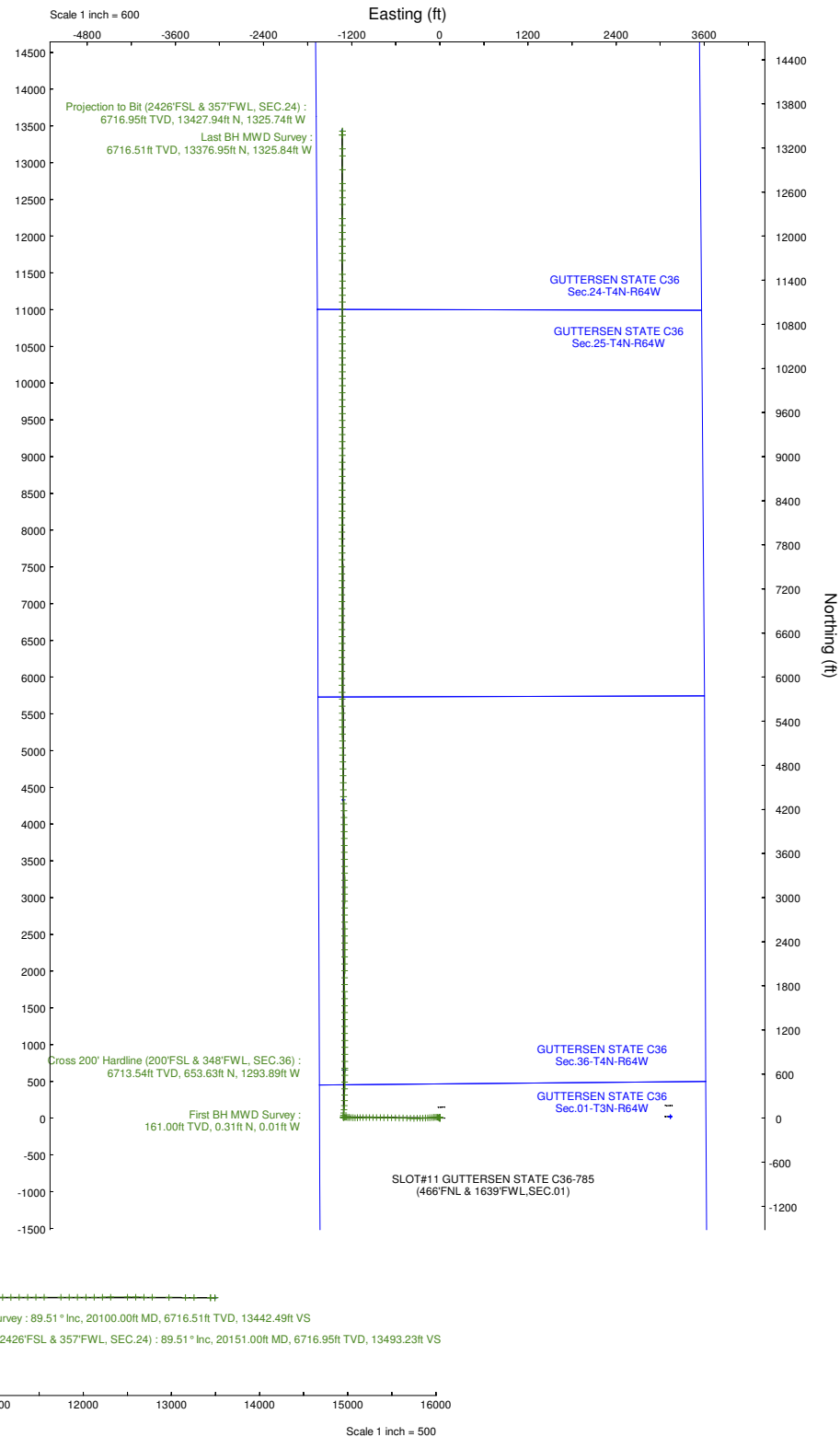
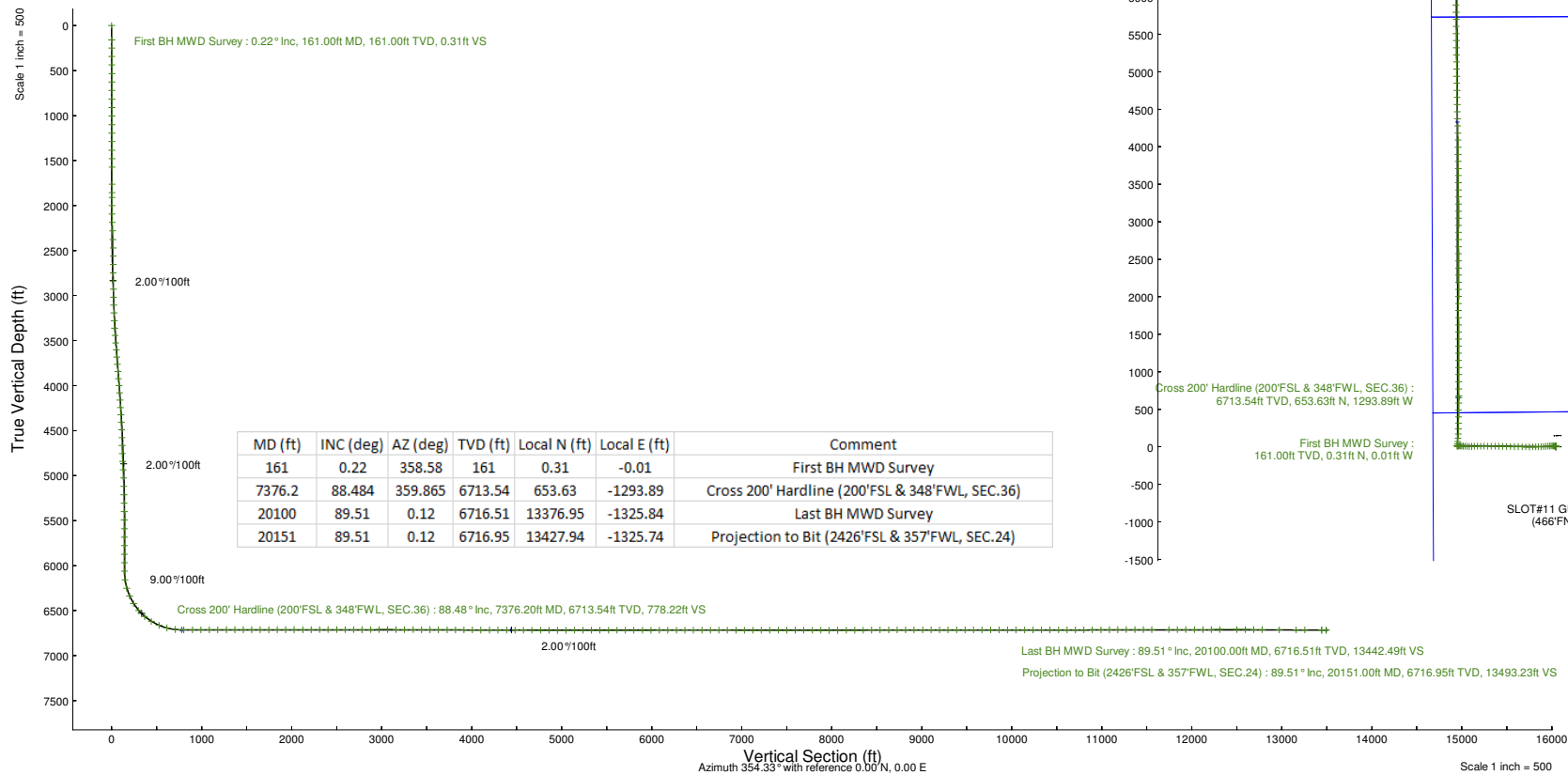
NOBLE ENERGY, INC

Location: COLORADO Slot: SLOT#11 GUTTERSEN STATE C36-785 (466'FNL & 1639'FWL, SEC.01)
 Field: WELD COUNTY (NOBLE NAD 83 GRID) Well: GUTTERSEN STATE C36-785
 Facility: SEC.01-T03N-R64W Wellbore: GUTTERSEN STATE C36-785 PWB

Plot reference wellpath is GUTTERSEN STATE C36-785 (REV-C.0) PWP		Grid System: NAD83 / Lambert Colorado SP, Northern Zone (501), US feet
True vertical depths are referenced to PD 268 (4746'GL+29'KB@4775'RKb) (KB)		North Reference: Grid north
Reference wellpath measured depths are referenced to PD 268 (4746'GL+29'KB@4775'RKb) (KB)		Scale: True distance
PD 268 (4746'GL+29'KB@4775'RKb) (KB) to Mean Sea Level: 4775 feet		Coordinates are in feet referenced to Slot
Mean Sea Level to Ground level (At Slot: SLOT#11 GUTTERSEN STATE C36-785 (466'FNL & 1639'FWL, SEC.01)): 0 feet		Depths are in feet
Offset wellpath MDs are referenced to each path's default MD datum		Created by: marsam01 on 2023-05-24; Database: WA_Denver

Location Information

Facility Name		Grid East (US ft)	Grid North (US ft)	Latitude	Longitude	
SEC.01-T03N-R64W		3278229.920	1339437.650	40°15'39.1032"N	104°30'10.9152"W	
Slot	Local N (ft)	Local E (ft)	Grid East (US ft)	Grid North (US ft)	Latitude	Longitude
SLOT#11 GUTTERSEN STATE C36-785 (466'FNL & 1639'FWL, SEC.01)	-149.85	21.78	3278251.701	1339287.802	40°15'37.6200"N	104°30'10.6560"W
PD 268 (4746'GL+29'KB@4775'RKb) (KB) to Ground level (At Slot: SLOT#11 GUTTERSEN STATE C36-785 (466'FNL & 1639'FWL, SEC.01))				4775ft		
Mean Sea Level to Ground level (At Slot: SLOT#11 GUTTERSEN STATE C36-785 (466'FNL & 1639'FWL, SEC.01))				0ft		
PD 268 (4746'GL+29'KB@4775'RKb) (KB) to Mean Sea Level				4775ft		



REFERENCE WELLPATH IDENTIFICATION

Operator	NOBLE ENERGY, INC	Well	GUTTERSEN STATE C36-785
Field	WELD COUNTY (NOBLE NAD 83 GRID)	API/Legal	05-123-49078
Facility	SEC.01-T03N-R64W	Wellbore	GUTTERSEN STATE C36-785 AWB
Slot	SLOT#11 GUTTERSEN STATE C36-785 (466'FNL & 1639'FWL,SEC.01)		

REPORT SETUP INFORMATION

Projection System	NAD83 / Lambert Colorado SP, Northern Zone (501), US feet	Software System	WellArchitect® 6.0
North Reference	Grid	User	Martsam01
Scale	0.999957	Report Generated	5/23/2023 at 4:34:03 PM
Convergence at slot	0.64° East	Database	WA_Denver

WELLPATH LOCATION

	Local coordinates		Grid coordinates		Geographic coordinates	
	North[ft]	East[ft]	Easting[US ft]	Northing[US ft]	Latitude	Longitude
Slot Location	-149.85	21.78	3278251.70	1339287.80	40.2604500°	-104.5029600°
Facility Reference Pt			3278229.92	1339437.65	40.2608620°	-104.5030320°
Field Reference Pt			3000000.00	4454105.15	48.7761986°	-105.5000000°

WELLPATH DATUM

Calculation method	Minimum curvature	PD 268 (4746'GL+29'KB@4775'RKB) (KB) to Facility Vertical Datum	4775.00ft
Horizontal Reference Pt	Slot	PD 268 (4746'GL+29'KB@4775'RKB) (KB) to Mean Sea Level	4775.00ft
Vertical Reference Pt	PD 268 (4746'GL+29'KB@4775'RKB) (KB)	PD 268 (4746'GL+29'KB@4775'RKB) (KB) to Ground Level at Slot (SLOT#11 GUTTERSEN STATE C36-785 (466'FNL & 1639'FWL,SEC.01))	4775.00ft
MD Reference Pt	PD 268 (4746'GL+29'KB@4775'RKB) (KB)	Section Origin	N 0.00, E 0.00 ft
Field Vertical Reference	Mean Sea Level	Section Azimuth	354.33°



Actual Wellpath Report

GUTTERSEN STATE C36-785 AWP

Page 2 of 8


REFERENCE WELLPATH IDENTIFICATION

Operator	NOBLE ENERGY, INC	Well	GUTTERSEN STATE C36-785
Field	WELD COUNTY (NOBLE NAD 83 GRID)	API/Legal	05-123-49078
Facility	SEC.01-T03N-R64W	Wellbore	GUTTERSEN STATE C36-785 AWB
Slot	SLOT#11 GUTTERSEN STATE C36-785 (466'FNL & 1639'FWL,SEC.01)		

WELLPATH DATA (209 stations)

MD [ft]	Inclination [°]	Azimuth [°]	TVD [ft]	Vert Sect [ft]	North [ft]	East [ft]	Latitude	Longitude	DLS [°/100ft]	Comments
0.00	0.000	358.580	0.00	0.00	0.00	0.00	40.2604500	-104.5029600	0.00	
161.00	0.220	358.580	161.00	0.31	0.31	-0.01	40.2604508	-104.5029600	0.14	First BH MWD Survey
251.00	0.450	344.790	251.00	0.83	0.82	-0.10	40.2604523	-104.5029603	0.27	
342.00	0.380	354.410	342.00	1.48	1.47	-0.23	40.2604540	-104.5029608	0.11	
437.00	0.220	25.460	436.99	1.95	1.95	-0.18	40.2604553	-104.5029606	0.23	
532.00	0.160	341.500	531.99	2.24	2.24	-0.14	40.2604561	-104.5029604	0.16	
626.00	0.180	60.820	625.99	2.43	2.43	-0.06	40.2604567	-104.5029601	0.23	
721.00	0.230	66.190	720.99	2.55	2.58	0.25	40.2604571	-104.5029590	0.06	
816.00	0.090	57.760	815.99	2.64	2.70	0.49	40.2604574	-104.5029582	0.15	
911.00	0.150	33.930	910.99	2.77	2.84	0.62	40.2604578	-104.5029577	0.08	
1005.00	0.120	65.920	1004.99	2.89	2.98	0.78	40.2604582	-104.5029571	0.08	
1100.00	0.140	59.910	1099.99	2.97	3.08	0.97	40.2604584	-104.5029564	0.03	
1195.00	0.220	57.410	1194.99	3.10	3.24	1.22	40.2604589	-104.5029555	0.08	
1290.00	0.250	69.010	1289.99	3.24	3.41	1.57	40.2604593	-104.5029542	0.06	
1384.00	0.270	75.810	1383.99	3.33	3.54	1.98	40.2604597	-104.5029528	0.04	
1479.00	0.250	77.970	1478.99	3.38	3.64	2.40	40.2604599	-104.5029513	0.02	
1574.00	0.190	87.290	1573.99	3.40	3.69	2.76	40.2604600	-104.5029500	0.07	
1763.00	0.180	64.890	1762.99	3.48	3.83	3.34	40.2604604	-104.5029479	0.04	
1858.00	0.270	297.360	1857.99	3.65	4.00	3.27	40.2604609	-104.5029481	0.43	
1910.00	0.550	298.790	1909.99	3.86	4.17	2.95	40.2604614	-104.5029493	0.54	
1999.00	1.710	271.430	1998.97	4.27	4.41	1.24	40.2604621	-104.5029554	1.40	
2094.00	3.350	274.110	2093.87	4.91	4.65	-2.94	40.2604628	-104.5029704	1.73	
2188.00	4.970	284.710	2187.62	6.80	5.88	-9.62	40.2604664	-104.5029942	1.90	
2283.00	6.580	288.440	2282.14	10.45	8.64	-18.76	40.2604743	-104.5030269	1.74	
2378.00	8.930	282.880	2376.26	15.02	12.01	-31.12	40.2604839	-104.5030710	2.59	
2473.00	9.940	263.270	2470.00	17.22	12.69	-46.45	40.2604863	-104.5031259	3.53	
2567.00	11.720	264.230	2562.32	17.05	10.78	-64.01	40.2604816	-104.5031889	1.90	
2662.00	13.820	265.290	2654.97	17.22	8.88	-84.92	40.2604770	-104.5032639	2.22	
2757.00	15.240	265.440	2746.93	17.65	6.95	-108.68	40.2604724	-104.5033491	1.50	
2852.00	16.800	266.340	2838.24	18.38	5.09	-134.83	40.2604681	-104.5034428	1.66	
2946.00	18.890	266.820	2927.71	19.51	3.37	-163.58	40.2604643	-104.5035459	2.23	
3041.00	20.710	267.500	3017.09	21.11	1.79	-195.72	40.2604609	-104.5036611	1.93	
3136.00	22.850	268.240	3105.30	23.29	0.49	-230.94	40.2604585	-104.5037874	2.27	
3231.00	24.920	268.550	3192.16	26.02	-0.58	-269.39	40.2604567	-104.5039252	2.18	
3326.00	26.340	269.120	3277.81	29.25	-1.41	-310.47	40.2604557	-104.5040724	1.52	
3420.00	28.560	269.880	3361.22	33.17	-1.78	-353.80	40.2604560	-104.5042276	2.39	
3515.00	30.600	270.670	3443.84	38.03	-1.55	-400.69	40.2604581	-104.5043956	2.19	
3610.00	32.620	272.300	3524.74	44.25	-0.24	-450.46	40.2604632	-104.5045739	2.31	
3705.00	32.960	270.990	3604.60	50.80	1.24	-501.88	40.2604689	-104.5047581	0.83	
3799.00	33.000	271.090	3683.46	56.77	2.17	-553.04	40.2604730	-104.5049413	0.07	
3894.00	33.130	271.060	3763.07	62.86	3.14	-604.86	40.2604773	-104.5051270	0.14	
3989.00	32.900	271.150	3842.73	68.96	4.14	-656.62	40.2604816	-104.5053123	0.25	
4084.00	32.900	271.130	3922.50	75.08	5.16	-708.21	40.2604860	-104.5054971	0.01	
4179.00	32.980	271.090	4002.22	81.18	6.16	-759.86	40.2604903	-104.5056821	0.09	
4273.00	32.890	270.920	4081.12	87.11	7.06	-810.95	40.2604944	-104.5058652	0.14	

REFERENCE WELLPATH IDENTIFICATION

Operator	NOBLE ENERGY, INC	Well	GUTTERSEN STATE C36-785
Field	WELD COUNTY (NOBLE NAD 83 GRID)	API/Legal	05-123-49078
Facility	SEC.01-T03N-R64W	Wellbore	GUTTERSEN STATE C36-785 AWB
Slot	SLOT#11 GUTTERSEN STATE C36-785 (466'FNL & 1639'FWL,SEC.01)		

WELLPATH DATA (209 stations) † = interpolated, ‡ = extrapolated station

MD [ft]	Inclination [°]	Azimuth [°]	TVD [ft]	Vert Sect [ft]	North [ft]	East [ft]	Latitude	Longitude	DLS [°/100ft]	Comments
4368.00	31.710	270.630	4161.42	92.81	7.75	-861.71	40.2604978	-104.5060470	1.25	
4463.00	30.230	270.130	4242.87	97.97	8.08	-910.60	40.2605002	-104.5062221	1.58	
4557.00	29.490	270.030	4324.39	102.65	8.14	-957.40	40.2605019	-104.5063898	0.79	
4652.00	28.490	269.690	4407.49	107.09	8.03	-1003.44	40.2605030	-104.5065548	1.07	
4747.00	25.730	268.940	4492.04	110.86	7.53	-1046.72	40.2605029	-104.5067099	2.93	
4841.00	23.430	268.610	4577.52	113.90	6.70	-1085.81	40.2605018	-104.5068499	2.45	
4936.00	21.510	267.560	4665.30	116.29	5.50	-1122.10	40.2604997	-104.5069800	2.06	
5031.00	18.620	270.040	4754.53	118.78	4.77	-1154.67	40.2604987	-104.5070967	3.17	
5125.00	17.230	273.790	4843.96	122.56	5.70	-1183.57	40.2605021	-104.5072002	1.92	
5220.00	16.020	273.960	4934.99	127.06	7.53	-1210.69	40.2605080	-104.5072973	1.27	
5315.00	13.370	272.990	5026.88	130.91	9.01	-1234.74	40.2605128	-104.5073834	2.80	
5410.00	11.430	272.290	5119.66	133.86	9.96	-1255.12	40.2605160	-104.5074564	2.05	
5504.00	9.840	272.360	5212.04	136.28	10.67	-1272.45	40.2605185	-104.5075185	1.69	
5599.00	7.840	271.860	5305.90	138.26	11.21	-1287.04	40.2605204	-104.5075707	2.11	
5694.00	5.420	269.030	5400.26	139.47	11.34	-1298.00	40.2605211	-104.5076100	2.57	
5789.00	3.280	271.120	5494.98	140.16	11.32	-1305.20	40.2605213	-104.5076358	2.26	
5883.00	3.080	264.590	5588.84	140.49	11.14	-1310.41	40.2605209	-104.5076544	0.44	
5978.00	0.280	8.130	5683.79	140.73	11.12	-1312.92	40.2605210	-104.5076634	3.32	
6073.00	0.630	84.580	5778.79	140.95	11.40	-1312.36	40.2605217	-104.5076614	0.66	
6168.00	0.380	90.890	5873.79	140.91	11.45	-1311.53	40.2605218	-104.5076584	0.27	
6263.00	0.090	144.230	5968.79	140.81	11.38	-1311.17	40.2605216	-104.5076572	0.35	
6357.00	0.170	107.170	6062.79	140.70	11.28	-1310.99	40.2605213	-104.5076565	0.12	
6452.00	8.300	359.820	6157.46	147.48	18.11	-1310.88	40.2605401	-104.5076559	8.79	
6547.00	15.890	1.530	6250.28	167.24	38.00	-1310.55	40.2605946	-104.5076539	8.00	
6642.00	24.000	2.510	6339.51	199.32	70.35	-1309.36	40.2606834	-104.5076483	8.54	
6737.00	32.310	7.800	6423.21	243.21	114.89	-1305.06	40.2608055	-104.5076311	9.13	
6831.00	40.730	2.170	6498.70	298.14	170.54	-1300.48	40.2609581	-104.5076125	9.63	
6926.00	49.900	0.850	6565.44	365.09	237.99	-1298.76	40.2611432	-104.5076036	9.70	
7021.00	59.050	1.000	6620.58	441.81	315.21	-1297.51	40.2613551	-104.5075960	9.63	
7116.00	67.010	0.480	6663.63	525.88	399.81	-1296.43	40.2615873	-104.5075888	8.39	
7210.00	76.770	0.870	6692.81	614.57	489.04	-1295.37	40.2618322	-104.5075814	10.39	
7305.00	83.860	0.600	6708.79	707.57	582.61	-1294.17	40.2620890	-104.5075734	7.47	
7376.20†	88.484	359.865	6713.54	778.22	653.63	-1293.89	40.2622839	-104.5075695	6.58	Cross 200' Hardline (200'FSL & 348'FWL, SEC.36)
7400.00	90.030	359.620	6713.85	801.91	677.43	-1293.99	40.2623493	-104.5075689	6.58	
7495.00	89.970	359.800	6713.85	896.49	772.43	-1294.47	40.2626100	-104.5075668	0.20	
7590.00	90.060	359.940	6713.82	991.05	867.43	-1294.69	40.2628708	-104.5075638	0.18	
7685.00	90.120	359.820	6713.67	1085.60	962.43	-1294.89	40.2631315	-104.5075607	0.14	
7779.00	90.060	359.850	6713.52	1179.17	1056.43	-1295.16	40.2633896	-104.5075579	0.07	
7874.00	90.710	359.690	6712.89	1273.74	1151.43	-1295.54	40.2636503	-104.5075554	0.70	
7969.00	90.000	359.820	6712.30	1368.31	1246.42	-1295.95	40.2639111	-104.5075531	0.76	
8064.00	89.940	0.140	6712.35	1462.85	1341.42	-1295.98	40.2641718	-104.5075494	0.34	
8158.00	90.000	359.760	6712.40	1556.40	1435.42	-1296.06	40.2644298	-104.5075459	0.41	
8253.00	90.000	0.030	6712.40	1650.95	1530.42	-1296.24	40.2646906	-104.5075427	0.28	
8348.00	90.000	359.870	6712.40	1745.50	1625.42	-1296.32	40.2649514	-104.5075392	0.17	
8443.00	89.970	359.880	6712.42	1840.05	1720.42	-1296.53	40.2652121	-104.5075362	0.03	



Actual Wellpath Report

GUTTERSEN STATE C36-785 AWP

Page 4 of 8


REFERENCE WELLPATH IDENTIFICATION

Operator	NOBLE ENERGY, INC	Well	GUTTERSEN STATE C36-785
Field	WELD COUNTY (NOBLE NAD 83 GRID)	API/Legal	05-123-49078
Facility	SEC.01-T03N-R64W	Wellbore	GUTTERSEN STATE C36-785 AWB
Slot	SLOT#11 GUTTERSEN STATE C36-785 (466'FNL & 1639'FWL,SEC.01)		

WELLPATH DATA (209 stations)

MD (ft)	Inclination (°)	Azimuth (°)	TVD (ft)	Vert Sect (ft)	North (ft)	East (ft)	Latitude	Longitude	DLS (°/100ft)	Comments
8538.00	90.000	0.020	6712.45	1934.60	1815.42	-1296.61	40.2654729	-104.5075326	0.15	
8632.00	90.220	0.020	6712.27	2028.13	1909.42	-1296.58	40.2657309	-104.5075288	0.23	
8727.00	89.880	0.160	6712.18	2122.65	2004.42	-1296.43	40.2659916	-104.5075244	0.39	
8822.00	89.880	359.930	6712.38	2217.18	2099.42	-1296.35	40.2662524	-104.5075203	0.24	
8917.00	90.860	0.690	6711.77	2311.66	2194.42	-1295.84	40.2665131	-104.5075147	1.31	
9011.00	89.690	359.550	6711.32	2405.18	2288.41	-1295.64	40.2667711	-104.5075102	1.74	
9106.00	90.310	0.260	6711.32	2499.73	2383.41	-1295.80	40.2670319	-104.5075070	0.99	
9201.00	89.880	0.050	6711.16	2594.24	2478.41	-1295.54	40.2672926	-104.5075022	0.50	
9296.00	89.420	359.380	6711.74	2688.82	2573.41	-1296.01	40.2675534	-104.5075001	0.86	
9390.00	89.820	359.940	6712.36	2782.41	2667.40	-1296.57	40.2678114	-104.5074983	0.73	
9485.00	90.800	359.920	6711.85	2876.95	2762.40	-1296.69	40.2680721	-104.5074950	1.03	
9580.00	90.180	0.070	6711.04	2971.48	2857.39	-1296.70	40.2683329	-104.5074912	0.67	
9675.00	89.940	0.220	6710.94	3066.00	2952.39	-1296.46	40.2685936	-104.5074865	0.30	
9769.00	89.820	359.920	6711.13	3159.52	3046.39	-1296.34	40.2688516	-104.5074823	0.34	
9864.00	89.630	0.060	6711.59	3254.06	3141.39	-1296.36	40.2691124	-104.5074786	0.25	
9959.00	89.850	359.950	6712.02	3348.59	3236.39	-1296.35	40.2693731	-104.5074747	0.26	
10054.00	89.750	359.680	6712.35	3443.16	3331.39	-1296.66	40.2696339	-104.5074720	0.30	
10148.00	90.000	359.440	6712.56	3536.77	3425.39	-1297.38	40.2698919	-104.5074708	0.37	
10243.00	89.480	359.280	6712.99	3631.40	3520.38	-1298.44	40.2701527	-104.5074708	0.57	
10338.00	89.630	359.470	6713.73	3726.03	3615.37	-1299.48	40.2704135	-104.5074707	0.25	
10432.00	89.820	359.130	6714.18	3819.68	3709.36	-1300.62	40.2706715	-104.5074711	0.41	
10527.00	89.880	359.550	6714.43	3914.31	3804.36	-1301.72	40.2709322	-104.5074712	0.45	
10622.00	89.380	359.480	6715.04	4008.92	3899.35	-1302.52	40.2711930	-104.5074703	0.53	
10716.00	90.150	359.810	6715.43	4102.52	3993.35	-1303.10	40.2714510	-104.5074686	0.89	
10811.00	89.690	359.240	6715.56	4197.13	4088.34	-1303.89	40.2717118	-104.5074676	0.77	
10906.00	89.630	358.560	6716.12	4291.82	4183.32	-1305.72	40.2719726	-104.5074703	0.72	
11001.00	89.720	358.660	6716.66	4386.56	4278.29	-1308.02	40.2722333	-104.5074748	0.14	
11096.00	89.750	358.590	6717.10	4481.29	4373.27	-1310.30	40.2724940	-104.5074791	0.08	
11190.00	89.820	358.720	6717.45	4575.02	4467.24	-1312.51	40.2727520	-104.5074833	0.16	
11285.00	89.750	358.680	6717.81	4669.74	4562.21	-1314.66	40.2730128	-104.5074872	0.08	
11380.00	89.880	358.600	6718.12	4764.47	4657.19	-1316.92	40.2732735	-104.5074914	0.16	
11475.00	89.750	358.770	6718.42	4859.20	4752.16	-1319.10	40.2735343	-104.5074954	0.23	
11569.00	89.820	358.810	6718.78	4952.91	4846.14	-1321.08	40.2737923	-104.5074988	0.09	
11664.00	90.090	359.450	6718.85	5047.58	4941.13	-1322.52	40.2740531	-104.5075001	0.73	
11759.00	90.460	359.440	6718.40	5142.20	5036.12	-1323.44	40.2743138	-104.5074996	0.39	
11853.00	89.940	359.430	6718.07	5235.83	5130.12	-1324.37	40.2745719	-104.5074992	0.55	
11948.00	89.850	359.510	6718.24	5330.45	5225.11	-1325.25	40.2748326	-104.5074985	0.13	
12043.00	90.000	359.350	6718.37	5425.07	5320.11	-1326.19	40.2750934	-104.5074981	0.23	
12138.00	90.220	359.430	6718.18	5519.70	5415.10	-1327.21	40.2753542	-104.5074979	0.25	
12232.00	90.090	359.630	6717.93	5613.31	5509.10	-1327.98	40.2756122	-104.5074969	0.25	
12327.00	89.940	359.480	6717.90	5707.92	5604.10	-1328.71	40.2758730	-104.5074957	0.22	
12422.00	89.970	359.460	6717.98	5802.54	5699.09	-1329.59	40.2761337	-104.5074951	0.04	
12517.00	90.000	359.280	6718.00	5897.17	5794.09	-1330.64	40.2763945	-104.5074950	0.19	
12612.00	90.220	359.610	6717.82	5991.79	5889.08	-1331.56	40.2766553	-104.5074945	0.42	
12706.00	90.090	0.050	6717.57	6085.36	5983.08	-1331.84	40.2769133	-104.5074917	0.49	

REFERENCE WELLPATH IDENTIFICATION

Operator	NOBLE ENERGY, INC	Well	GUTTERSEN STATE C36-785
Field	WELD COUNTY (NOBLE NAD 83 GRID)	API/Legal	05-123-49078
Facility	SEC.01-T03N-R64W	Wellbore	GUTTERSEN STATE C36-785 AWB
Slot	SLOT#11 GUTTERSEN STATE C36-785 (466'FNL & 1639'FWL,SEC.01)		

WELLPATH DATA (209 stations)

MD [ft]	Inclination [°]	Azimuth [°]	TVD [ft]	Vert Sect [ft]	North [ft]	East [ft]	Latitude	Longitude	DLS [°/100ft]	Comments
12801.00	90.280	359.800	6717.26	6179.91	6078.08	-1331.96	40.2771741	-104.5074884	0.33	
12896.00	89.910	0.210	6717.10	6274.44	6173.08	-1331.95	40.2774348	-104.5074845	0.58	
12991.00	90.220	0.150	6716.99	6368.95	6268.08	-1331.65	40.2776956	-104.5074796	0.33	
13086.00	89.850	0.030	6716.94	6463.47	6363.08	-1331.51	40.2779563	-104.5074753	0.41	
13181.00	89.910	0.160	6717.14	6557.99	6458.08	-1331.35	40.2782171	-104.5074709	0.15	
13275.00	89.850	359.850	6717.33	6651.53	6552.08	-1331.34	40.2784751	-104.5074671	0.34	
13370.00	89.910	359.910	6717.53	6746.08	6647.08	-1331.54	40.2787358	-104.5074640	0.09	
13465.00	89.940	0.000	6717.66	6840.62	6742.08	-1331.61	40.2789966	-104.5074605	0.10	
13560.00	89.910	359.900	6717.78	6935.17	6837.08	-1331.70	40.2792573	-104.5074570	0.11	
13655.00	89.940	359.580	6717.90	7029.74	6932.07	-1332.13	40.2795181	-104.5074547	0.34	
13749.00	89.940	0.290	6718.00	7123.29	7026.07	-1332.23	40.2797761	-104.5074513	0.76	
13844.00	89.940	0.260	6718.10	7217.78	7121.07	-1331.78	40.2800368	-104.5074459	0.03	
13939.00	89.940	0.160	6718.20	7312.28	7216.07	-1331.43	40.2802976	-104.5074408	0.11	
14034.00	89.970	359.870	6718.28	7406.82	7311.07	-1331.41	40.2805583	-104.5074369	0.31	
14128.00	89.850	359.690	6718.42	7500.39	7405.07	-1331.77	40.2808164	-104.5074344	0.23	
14223.00	90.340	0.450	6718.27	7594.92	7500.07	-1331.65	40.2810771	-104.5074302	0.95	
14318.00	90.000	359.850	6717.98	7689.43	7595.07	-1331.40	40.2813379	-104.5074255	0.73	
14413.00	90.180	0.480	6717.84	7783.93	7690.07	-1331.13	40.2815986	-104.5074207	0.69	
14508.00	89.170	358.360	6718.37	7878.55	7785.05	-1332.09	40.2818593	-104.5074203	2.47	
14603.00	90.060	0.120	6719.01	7973.20	7880.04	-1333.35	40.2821201	-104.5074211	2.08	
14697.00	90.060	0.250	6718.91	8066.71	7974.04	-1333.05	40.2823781	-104.5074162	0.14	
14792.00	90.430	0.500	6718.51	8161.18	8069.04	-1332.42	40.2826388	-104.5074102	0.47	
14887.00	89.940	0.130	6718.20	8255.66	8164.03	-1331.90	40.2828996	-104.5074045	0.65	
14982.00	90.400	0.530	6717.92	8350.14	8259.03	-1331.35	40.2831603	-104.5073987	0.64	
15076.00	91.510	0.170	6716.35	8443.61	8353.01	-1330.78	40.2834182	-104.5073929	1.24	
15171.00	90.180	0.210	6714.95	8538.10	8448.00	-1330.47	40.2836789	-104.5073879	1.40	
15266.00	90.060	0.380	6714.75	8632.58	8543.00	-1329.98	40.2839397	-104.5073824	0.22	
15361.00	90.060	0.240	6714.65	8727.07	8638.00	-1329.46	40.2842004	-104.5073767	0.15	
15455.00	90.060	0.280	6714.56	8820.56	8732.00	-1329.04	40.2844584	-104.5073714	0.04	
15550.00	90.000	359.850	6714.51	8915.09	8827.00	-1328.93	40.2847192	-104.5073672	0.46	
15645.00	90.000	0.310	6714.51	9009.61	8922.00	-1328.80	40.2849799	-104.5073629	0.48	
15740.00	89.940	0.030	6714.56	9104.12	9017.00	-1328.51	40.2852406	-104.5073581	0.30	
15835.00	89.970	0.070	6714.63	9198.64	9112.00	-1328.43	40.2855014	-104.5073540	0.05	
15929.00	90.060	0.300	6714.61	9292.15	9206.00	-1328.13	40.2857594	-104.5073491	0.26	
16024.00	90.090	359.920	6714.48	9386.67	9301.00	-1327.94	40.2860201	-104.5073447	0.40	
16119.00	89.940	0.170	6714.46	9481.20	9395.99	-1327.87	40.2862809	-104.5073406	0.31	
16214.00	90.000	0.180	6714.51	9575.71	9490.99	-1327.58	40.2865416	-104.5073357	0.06	
16309.00	90.030	0.080	6714.48	9670.22	9585.99	-1327.36	40.2868024	-104.5073312	0.11	
16404.00	90.000	359.850	6714.46	9764.76	9680.99	-1327.42	40.2870631	-104.5073276	0.24	
16498.00	90.000	0.040	6714.46	9858.31	9774.99	-1327.51	40.2873212	-104.5073241	0.20	
16593.00	90.030	0.090	6714.43	9952.84	9869.99	-1327.40	40.2875819	-104.5073199	0.06	
16688.00	89.880	0.010	6714.51	10047.36	9964.99	-1327.32	40.2878427	-104.5073158	0.18	
16783.00	89.970	0.140	6714.63	10141.89	10059.99	-1327.20	40.2881034	-104.5073115	0.17	
16878.00	90.060	0.090	6714.61	10236.40	10154.99	-1327.01	40.2883642	-104.5073070	0.11	
16972.00	90.000	0.010	6714.56	10329.94	10248.99	-1326.92	40.2886222	-104.5073030	0.11	



Actual Wellpath Report

GUTTERSEN STATE C36-785 AWP

Page 6 of 8


REFERENCE WELLPATH IDENTIFICATION

Operator	NOBLE ENERGY, INC	Well	GUTTERSEN STATE C36-785
Field	WELD COUNTY (NOBLE NAD 83 GRID)	API/Legal	05-123-49078
Facility	SEC.01-T03N-R64W	Wellbore	GUTTERSEN STATE C36-785 AWB
Slot	SLOT#11 GUTTERSEN STATE C36-785 (466'FNL & 1639'FWL,SEC.01)		

WELLPATH DATA (209 stations) † = interpolated, ‡ = extrapolated station

MD [ft]	Inclination [°]	Azimuth [°]	TVD [ft]	Vert Sect [ft]	North [ft]	East [ft]	Latitude	Longitude	DLS [°/100ft]	Comments
17067.00	89.970	359.950	6714.58	10424.47	10343.99	-1326.96	40.2888829	-104.5072993	0.07	
17162.00	90.030	0.130	6714.58	10519.00	10438.99	-1326.89	40.2891437	-104.5072952	0.20	
17257.00	89.970	359.830	6714.58	10613.54	10533.99	-1326.92	40.2894044	-104.5072915	0.32	
17352.00	90.030	359.730	6714.58	10708.11	10628.99	-1327.29	40.2896652	-104.5072890	0.12	
17446.00	90.000	359.830	6714.56	10801.69	10722.99	-1327.65	40.2899232	-104.5072866	0.11	
17541.00	90.340	0.060	6714.27	10896.23	10817.99	-1327.74	40.2901840	-104.5072831	0.43	
17636.00	90.520	0.540	6713.56	10990.71	10912.99	-1327.24	40.2904447	-104.5072775	0.54	
17731.00	90.310	0.220	6712.87	11085.18	11007.98	-1326.61	40.2907054	-104.5072714	0.40	
17826.00	90.180	0.200	6712.47	11179.68	11102.98	-1326.27	40.2909661	-104.5072663	0.14	
17920.00	90.400	0.230	6711.99	11273.19	11196.98	-1325.91	40.2912241	-104.5072613	0.24	
18015.00	90.090	0.160	6711.58	11367.69	11291.98	-1325.59	40.2914849	-104.5072563	0.33	
18110.00	90.030	359.860	6711.49	11462.22	11386.98	-1325.57	40.2917456	-104.5072525	0.32	
18205.00	89.970	359.840	6711.49	11556.78	11481.98	-1325.82	40.2920064	-104.5072495	0.07	
18394.00	90.150	359.970	6711.29	11744.89	11670.98	-1326.14	40.2925252	-104.5072431	0.12	
18489.00	89.940	359.840	6711.21	11839.44	11765.98	-1326.29	40.2927859	-104.5072398	0.26	
18584.00	89.940	359.720	6711.31	11934.01	11860.98	-1326.66	40.2930467	-104.5072373	0.13	
18679.00	90.060	359.950	6711.31	12028.57	11955.97	-1326.93	40.2933074	-104.5072345	0.27	
18773.00	89.970	0.100	6711.29	12122.11	12049.97	-1326.89	40.2935655	-104.5072306	0.19	
18868.00	90.250	0.310	6711.11	12216.61	12144.97	-1326.55	40.2938262	-104.5072255	0.37	
18963.00	90.150	0.300	6710.77	12311.09	12239.97	-1326.04	40.2940869	-104.5072199	0.11	
19153.00	90.150	359.940	6710.28	12500.12	12429.97	-1325.65	40.2946084	-104.5072109	0.19	
19247.00	89.600	0.130	6710.48	12593.66	12523.97	-1325.59	40.2948664	-104.5072069	0.62	
19342.00	89.570	0.020	6711.17	12688.18	12618.97	-1325.46	40.2951272	-104.5072026	0.12	
19437.00	89.510	0.100	6711.93	12782.70	12713.96	-1325.37	40.2953879	-104.5071985	0.11	
19627.00	89.570	0.000	6713.46	12971.75	12903.96	-1325.20	40.2959094	-104.5071902	0.06	
19816.00	89.690	359.890	6714.68	13159.84	13092.95	-1325.38	40.2964281	-104.5071833	0.09	
19911.00	89.690	359.770	6715.19	13254.40	13187.95	-1325.66	40.2966889	-104.5071805	0.13	
20100.00	89.510	0.120	6716.51	13442.49	13376.95	-1325.84	40.2972077	-104.5071736	0.21	Last BH MWD Survey
20151.00‡	89.510	0.120	6716.95	13493.23	13427.94	-1325.74	40.2973476	-104.5071711	0.00	Projection to Bit (2426'FSL & 357'FWL, SEC.24)

REFERENCE WELLPATH IDENTIFICATION

Operator	NOBLE ENERGY, INC	Well	GUTTERSEN STATE C36-785
Field	WELD COUNTY (NOBLE NAD 83 GRID)	API/Legal	05-123-49078
Facility	SEC.01-T03N-R64W	Wellbore	GUTTERSEN STATE C36-785 AWB
Slot	SLOT#11 GUTTERSEN STATE C36-785 (466'FNL & 1639'FWL,SEC.01)		

TARGETS

Name	TVD [ft]	North [ft]	East [ft]	Grid East [US ft]	Grid North [US ft]	Latitude	Longitude	Shape
GUTTERSEN STATE C36 Sec.01-T3N-R64W	-17.00	20.90	3137.01	3281388.57	1339308.70	40.2604100	-104.4917200	polygon
	2D Polygon: dimensions not calculated							
GUTTERSEN STATE C36 Sec.24-T4N-R64W	-17.00	20.90	3137.01	3281388.57	1339308.70	40.2604100	-104.4917200	polygon
	2D Polygon: dimensions not calculated							
GUTTERSEN STATE C36 Sec.25-T4N-R64W	-17.00	20.90	3137.01	3281388.57	1339308.70	40.2604100	-104.4917200	polygon
	2D Polygon: dimensions not calculated							
GUTTERSEN STATE C36 Sec.36-T4N-R64W	-17.00	20.90	3137.01	3281388.57	1339308.70	40.2604100	-104.4917200	polygon
	2D Polygon: dimensions not calculated							
GUTTERSEN STATE C36-785 BHL PLAN (2426'FSL & 350'FWL,SEC.24)	6715.00	13427.61	-1333.14	3276918.62	1352714.81	40.2973469	-104.5071977	point
GUTTERSEN STATE C36-785 LP PLAN (200'FSL & 350'FWL,SEC.36)	6715.00	653.78	-1292.02	3276959.74	1339941.55	40.2622843	-104.5075628	point
GUTTERSEN STATE C36-785 REV-2 BHL (2426'FSL & 350'FWL,SEC.24)	6715.00	13428.19	-1332.64	3276919.12	1352715.39	40.2973485	-104.5071959	point
GUTTERSEN STATE C36-785 REV-2 LP/TPZ (200'FSL & 330'FWL,SEC.36)	6715.00	653.63	-1311.52	3276940.24	1339941.41	40.2622845	-104.5076327	point
GUTTERSEN STATE C36-785 AC Inflection Point	6715.00	4331.00	-1314.00	3276937.76	1343618.61	40.2723781	-104.5074941	point

WELLPATH COMPOSITION - Ref Wellbore: GUTTERSEN STATE C36-785 AWB Ref Wellpath: GUTTERSEN STATE C36-785 AWP

Start MD [ft]	End MD [ft]	Positional Uncertainty Model	Log Name/Comment	Wellbore	Survey Date
0.00	1910.00	OWSG MWD rev2 (MS+IFR1)	13.5" Hole Evo Surface <161'-1910'>	GUTTERSEN STATE C36-785 AWB	4/4/2023
1910.00	20151.00	OWSG MWD rev2 (MS+IFR1)	8.5" Hole ATC Lucida OWSG MWD rev2 (MS+IFR1) <	GUTTERSEN STATE C36-785 AWB	4/4/2023

REFERENCE WELLPATH IDENTIFICATION

Operator	NOBLE ENERGY, INC	Well	GUTTERSEN STATE C36-785
Field	WELD COUNTY (NOBLE NAD 83 GRID)	API/Legal	05-123-49078
Facility	SEC.01-T03N-R64W	Wellbore	GUTTERSEN STATE C36-785 AWB
Slot	SLOT#11 GUTTERSEN STATE C36-785 (466'FNL & 1639'FWL,SEC.01)		

WELLPATH COMMENTS

MD [ft]	Inclination [°]	Azimuth [°]	TVD [ft]	Comment
161.00	0.220	358.580	161.00	First BH MWD Survey
7376.20	88.484	359.865	6713.54	Cross 200' Hardline (200'FSL & 348'FWL, SEC.36)
20100.00	89.510	0.120	6716.51	Last BH MWD Survey
20151.00	89.510	0.120	6716.95	Projection to Bit (2426'FSL & 357'FWL, SEC.24)