

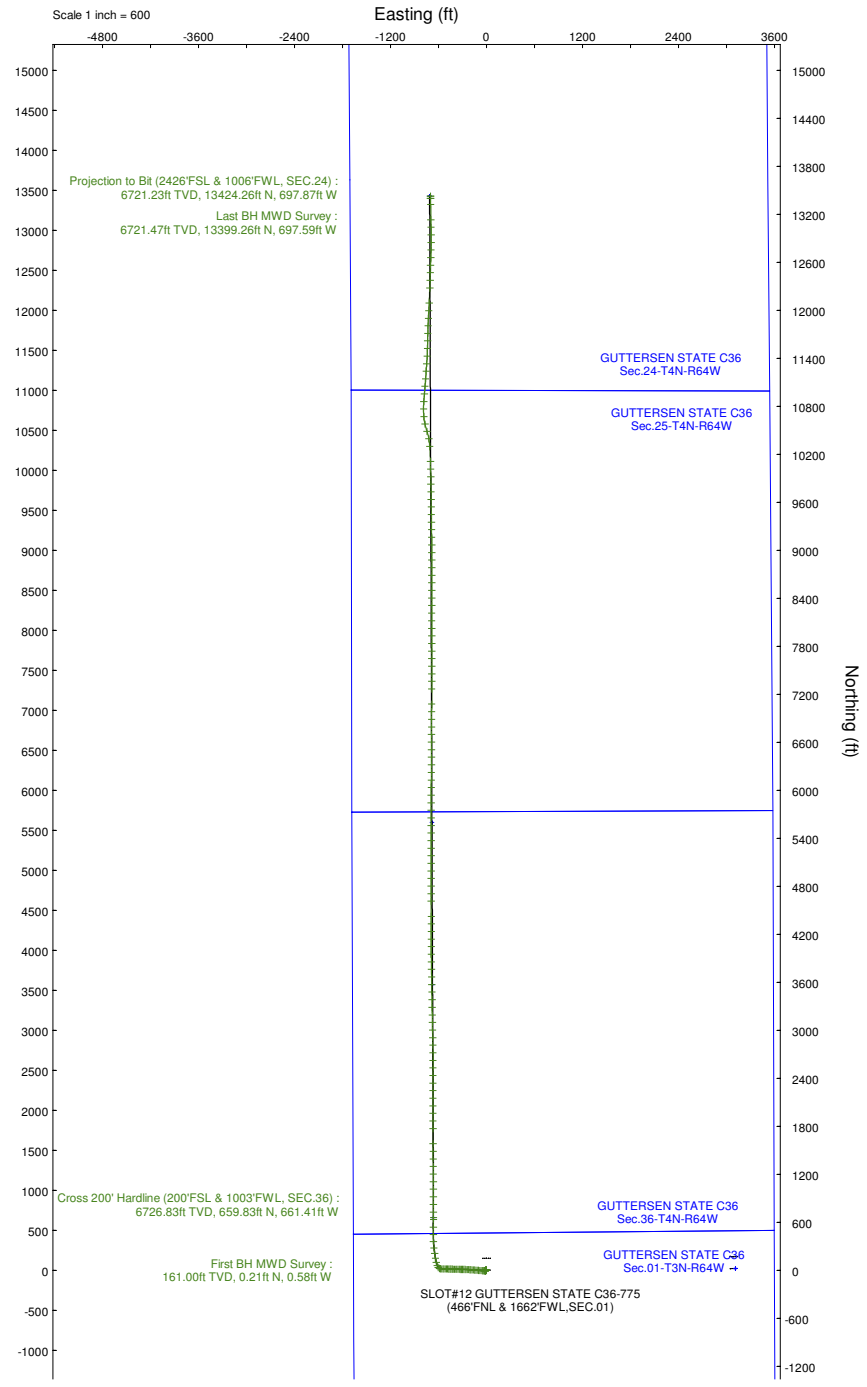
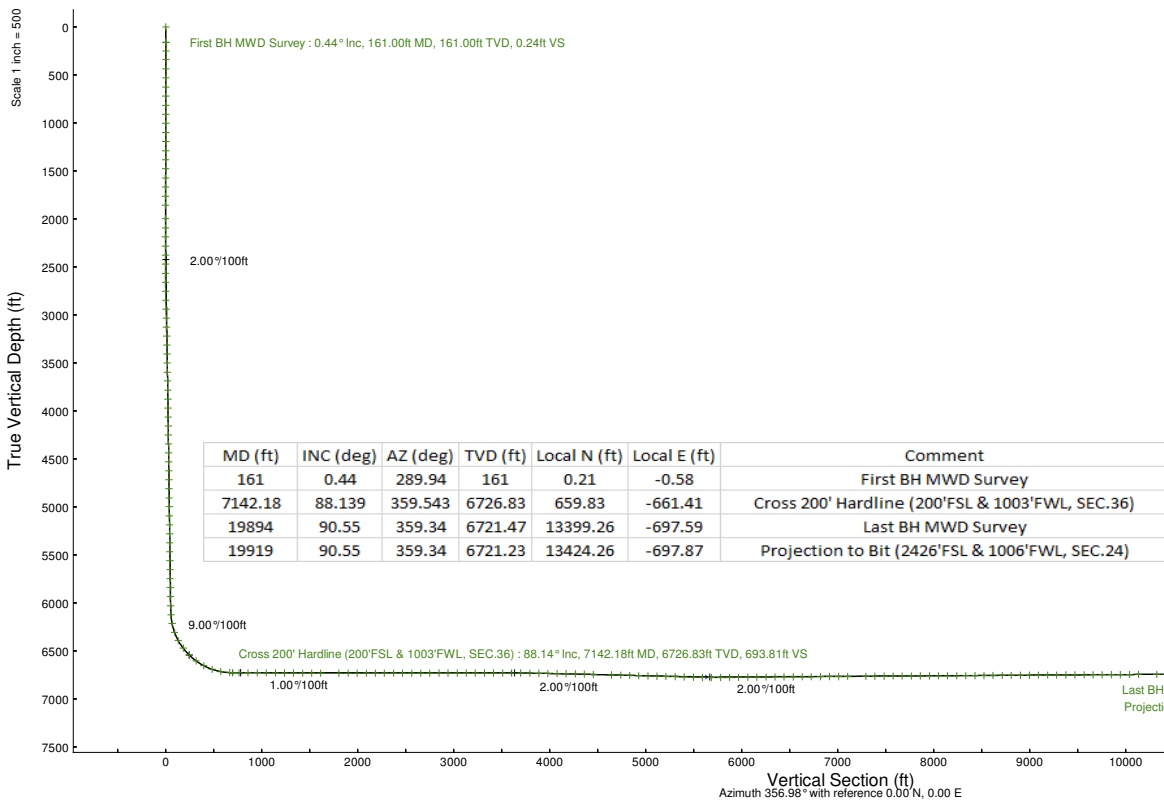
# NOBLE ENERGY, INC

Location: COLORADO Slot: SLOT#12 GUTTERSEN STATE C36-775 (466'FNL & 1662'FWL, SEC.01)  
 Field: WELD COUNTY (NOBLE NAD 83 GRID) Well: GUTTERSEN STATE C36-775  
 Facility: SEC.01-T03N-R64W Wellbore: GUTTERSEN STATE C36-775 PWB

Plot reference wellpath is GUTTERSEN STATE C36-775 (REV-B.0) PWP  
 Grid System: NAD83 / Lambert Colorado SP, Northern Zone (501), US feet  
 True vertical depths are referenced to PD 268 (4746'GL+29'KB@4775'RK) (RKB)  
 Reference wellpath measured depths are referenced to PD 268 (4746'GL+29'KB@4775'RK) (RKB)  
 PD 268 (4746'GL+29'KB@4775'RK) (RKB) to Mean Sea Level: 4775 feet  
 Mean Sea Level to Ground level (At Slot: SLOT#12 GUTTERSEN STATE C36-775 (466'FNL & 1662'FWL, SEC.01)): 0 feet  
 Offset wellpath MDs are referenced to each path's default MD datum  
 Created by: marisam01 on 2023-05-24; Database: WA\_Denver

### Location Information

Facility Name		Grid East (US ft)	Grid North (US ft)	Latitude	Longitude	
SEC.01-T03N-R64W		3278229.920	1339437.650	40°15'39.1032"N	104°30'10.9152"W	
Slot	Local N (ft)	Local E (ft)	Grid East (US ft)	Grid North (US ft)	Latitude	Longitude
SLOT#12 GUTTERSEN STATE C36-775 (466'FNL & 1662'FWL, SEC.01)	-149.60	44.11	3278274.026	1339288.053	40°15'37.6200"N	104°30'10.3680"W
PD 268 (4746'GL+29'KB@4775'RK) (RKB) to Ground level (At Slot: SLOT#12 GUTTERSEN STATE C36-775 (466'FNL & 1662'FWL, SEC.01))					4775#	
Mean Sea Level to Ground level (At Slot: SLOT#12 GUTTERSEN STATE C36-775 (466'FNL & 1662'FWL, SEC.01))					0#	
PD 268 (4746'GL+29'KB@4775'RK) (RKB) to Mean Sea Level					4775#	





# Actual Wellpath Report

GUTTERSEN STATE C36-775 AWP  
Page 1 of 8



REFERENCE WELLPATH IDENTIFICATION			
Operator	NOBLE ENERGY, INC	Well	GUTTERSEN STATE C36-775
Field	WELD COUNTY (NOBLE NAD 83 GRID)	API/Legal	05-123-49076
Facility	SEC.01-T03N-R64W	Wellbore	GUTTERSEN STATE C36-775 AWB
Slot	SLOT#12 GUTTERSEN STATE C36-775 (466'FNL & 1662'FWL,SEC.01)		

REPORT SETUP INFORMATION			
Projection System	NAD83 / Lambert Colorado SP, Northern Zone (501), US feet	Software System	WellArchitect® 6.0
North Reference	Grid	User	Martsam01
Scale	0.999957	Report Generated	5/23/2023 at 4:44:39 PM
Convergence at slot	0.64° East	Database	WA_Denver

WELLPATH LOCATION						
	Local coordinates		Grid coordinates		Geographic coordinates	
	North[ft]	East[ft]	Easting[US ft]	Northing[US ft]	Latitude	Longitude
Slot Location	-149.60	44.11	3278274.03	1339288.05	40.2604500°	-104.5028800°
Facility Reference Pt			3278229.92	1339437.65	40.2608620°	-104.5030320°
Field Reference Pt			3000000.00	4454105.15	48.7761986°	-105.5000000°

WELLPATH DATUM			
Calculation method	Minimum curvature	PD 268 (4746'GL+29'KB@4775'RKB) (RKB) to Facility Vertical Datum	4775.00ft
Horizontal Reference Pt	Slot	PD 268 (4746'GL+29'KB@4775'RKB) (RKB) to Mean Sea Level	4775.00ft
Vertical Reference Pt	PD 268 (4746'GL+29'KB@4775'RKB) (RKB)	PD 268 (4746'GL+29'KB@4775'RKB) (RKB) to Ground Level at Slot (SLOT#12 GUTTERSEN STATE C36-775 (466'FNL & 1662'FWL,SEC.01))	4775.00ft
MD Reference Pt	PD 268 (4746'GL+29'KB@4775'RKB) (RKB)	Section Origin	N 0.00, E 0.00 ft
Field Vertical Reference	Mean Sea Level	Section Azimuth	356.98°



# Actual Wellpath Report

## GUTTERSEN STATE C36-775 AWP

Page 2 of 8


**REFERENCE WELLPATH IDENTIFICATION**

Operator	NOBLE ENERGY, INC	Well	GUTTERSEN STATE C36-775
Field	WELD COUNTY (NOBLE NAD 83 GRID)	API/Legal	05-123-49076
Facility	SEC.01-T03N-R64W	Wellbore	GUTTERSEN STATE C36-775 AWB
Slot	SLOT#12 GUTTERSEN STATE C36-775 (466'FNL & 1662'FWL,SEC.01)		

**WELLPATH DATA (206 stations)**

MD [ft]	Inclination [°]	Azimuth [°]	TVD [ft]	Vert Sect [ft]	North [ft]	East [ft]	Latitude	Longitude	DLS [°/100ft]	Comments
0.00	0.000	289.940	0.00	0.00	0.00	0.00	40.2604500	-104.5028800	0.00	
161.00	0.440	289.940	161.00	0.24	0.21	-0.58	40.2604506	-104.5028821	0.27	First BH MWD Survey
251.00	0.740	291.160	250.99	0.61	0.54	-1.45	40.2604515	-104.5028852	0.33	
342.00	0.260	264.470	341.99	0.85	0.73	-2.20	40.2604521	-104.5028879	0.57	
437.00	0.390	219.370	436.99	0.60	0.46	-2.62	40.2604513	-104.5028894	0.29	
532.00	0.400	232.720	531.99	0.17	0.01	-3.09	40.2604501	-104.5028911	0.10	
626.00	0.500	232.360	625.98	-0.25	-0.44	-3.68	40.2604489	-104.5028932	0.11	
721.00	0.530	239.550	720.98	-0.68	-0.92	-4.38	40.2604476	-104.5028957	0.07	
816.00	0.620	243.810	815.97	-1.09	-1.37	-5.22	40.2604464	-104.5028988	0.10	
911.00	0.630	259.440	910.97	-1.36	-1.69	-6.20	40.2604456	-104.5029023	0.18	
1005.00	0.570	265.090	1004.96	-1.44	-1.82	-7.17	40.2604452	-104.5029058	0.09	
1100.00	0.470	249.070	1099.96	-1.58	-2.00	-8.01	40.2604448	-104.5029088	0.18	
1195.00	0.480	264.760	1194.96	-1.71	-2.18	-8.77	40.2604443	-104.5029115	0.14	
1290.00	0.430	246.040	1289.95	-1.86	-2.36	-9.49	40.2604438	-104.5029141	0.16	
1384.00	0.590	225.690	1383.95	-2.30	-2.84	-10.16	40.2604425	-104.5029165	0.25	
1479.00	0.550	240.500	1478.95	-2.83	-3.41	-10.90	40.2604410	-104.5029192	0.16	
1574.00	0.340	216.620	1573.94	-3.25	-3.86	-11.47	40.2604398	-104.5029212	0.29	
1669.00	0.370	216.560	1668.94	-3.70	-4.33	-11.82	40.2604385	-104.5029225	0.03	
1763.00	0.370	232.320	1762.94	-4.11	-4.76	-12.24	40.2604373	-104.5029240	0.11	
1858.00	0.500	265.000	1857.94	-4.30	-4.98	-12.90	40.2604367	-104.5029264	0.29	
1999.00	0.340	334.620	1998.93	-3.93	-4.66	-13.69	40.2604376	-104.5029292	0.35	
2093.00	0.500	127.330	2092.93	-3.94	-4.66	-13.48	40.2604376	-104.5029285	0.87	
2188.00	0.500	250.460	2187.93	-4.32	-5.05	-13.54	40.2604366	-104.5029287	0.93	
2283.00	0.150	246.540	2282.93	-4.48	-5.23	-14.05	40.2604361	-104.5029305	0.37	
2378.00	1.850	266.750	2377.91	-4.53	-5.37	-15.69	40.2604357	-104.5029364	1.80	
2472.00	3.550	268.720	2471.80	-4.45	-5.52	-20.12	40.2604355	-104.5029523	1.81	
2567.00	5.030	268.890	2566.53	-4.22	-5.67	-27.22	40.2604353	-104.5029778	1.56	
2662.00	6.970	268.520	2661.01	-3.93	-5.90	-37.15	40.2604350	-104.5030133	2.04	
2757.00	9.980	274.780	2754.96	-2.66	-5.36	-51.12	40.2604369	-104.5030634	3.31	
2851.00	9.800	273.890	2847.57	-0.59	-4.14	-67.22	40.2604407	-104.5031210	0.25	
2946.00	9.910	274.730	2941.16	1.49	-2.92	-83.43	40.2604446	-104.5031790	0.19	
3041.00	9.690	274.980	3034.78	3.71	-1.55	-99.54	40.2604488	-104.5032367	0.24	
3136.00	9.690	274.800	3128.42	5.90	-0.19	-115.47	40.2604530	-104.5032937	0.04	
3231.00	9.370	274.680	3222.11	8.03	1.11	-131.15	40.2604571	-104.5033498	0.34	
3325.00	9.410	274.060	3314.85	10.00	2.28	-146.44	40.2604608	-104.5034046	0.12	
3420.00	9.620	273.730	3408.55	11.89	3.34	-162.11	40.2604642	-104.5034607	0.23	
3515.00	9.370	274.480	3502.24	13.83	4.47	-177.74	40.2604677	-104.5035166	0.29	
3610.00	9.520	274.240	3595.96	15.84	5.65	-193.28	40.2604715	-104.5035723	0.16	
3704.00	9.010	274.360	3688.73	17.77	6.78	-208.38	40.2604751	-104.5036263	0.54	
3799.00	9.040	274.350	3782.55	19.68	7.92	-223.23	40.2604786	-104.5036795	0.03	
3894.00	8.890	271.780	3876.39	21.25	8.71	-238.01	40.2604813	-104.5037324	0.45	
3989.00	8.920	271.260	3970.25	22.42	9.10	-252.71	40.2604828	-104.5037850	0.09	
4084.00	8.870	271.110	4064.11	23.50	9.40	-267.40	40.2604841	-104.5038377	0.06	
4178.00	9.020	271.430	4156.96	24.59	9.73	-282.01	40.2604854	-104.5038900	0.17	
4273.00	8.870	271.990	4250.81	25.81	10.17	-296.78	40.2604871	-104.5039429	0.18	

**REFERENCE WELLPATH IDENTIFICATION**

Operator	NOBLE ENERGY, INC	Well	GUTTERSEN STATE C36-775
Field	WELD COUNTY (NOBLE NAD 83 GRID)	API/Legal	05-123-49076
Facility	SEC.01-T03N-R64W	Wellbore	GUTTERSEN STATE C36-775 AWB
Slot	SLOT#12 GUTTERSEN STATE C36-775 (466'FNL & 1662'FWL,SEC.01)		

**WELLPATH DATA (206 stations) † = interpolated, ‡ = extrapolated station**

MD [ft]	Inclination [°]	Azimuth [°]	TVD [ft]	Vert Sect [ft]	North [ft]	East [ft]	Latitude	Longitude	DLS [°/100ft]	Comments
4368.00	8.820	271.470	4344.68	27.02	10.61	-311.38	40.2604887	-104.5039952	0.10	
4462.00	8.770	271.430	4437.57	28.14	10.97	-325.75	40.2604902	-104.5040466	0.05	
4557.00	8.810	271.940	4531.46	29.33	11.40	-340.26	40.2604918	-104.5040986	0.09	
4652.00	8.660	271.310	4625.35	30.50	11.81	-354.68	40.2604934	-104.5041503	0.19	
4746.00	8.900	271.250	4718.25	31.58	12.13	-369.02	40.2604947	-104.5042016	0.26	
4841.00	8.950	270.650	4812.10	32.60	12.37	-383.76	40.2604958	-104.5042544	0.11	
4936.00	9.020	271.060	4905.94	33.60	12.60	-398.59	40.2604969	-104.5043076	0.10	
5030.00	9.130	271.350	4998.76	34.70	12.91	-413.42	40.2604982	-104.5043607	0.13	
5125.00	8.420	272.770	5092.65	35.98	13.42	-427.90	40.2605000	-104.5044125	0.78	
5220.00	8.510	271.310	5186.61	37.21	13.92	-441.87	40.2605018	-104.5044626	0.25	
5315.00	8.750	271.860	5280.54	38.35	14.31	-456.12	40.2605034	-104.5045136	0.27	
5409.00	8.800	271.770	5373.44	39.56	14.77	-470.46	40.2605050	-104.5045649	0.06	
5504.00	8.910	271.580	5467.30	40.76	15.20	-485.07	40.2605067	-104.5046173	0.12	
5599.00	9.040	271.330	5561.14	41.92	15.57	-499.89	40.2605082	-104.5046704	0.14	
5694.00	9.040	271.740	5654.96	43.11	15.97	-514.81	40.2605097	-104.5047238	0.07	
5788.00	9.010	271.260	5747.80	44.27	16.36	-529.55	40.2605112	-104.5047766	0.09	
5883.00	8.930	270.650	5841.64	45.30	16.60	-544.36	40.2605124	-104.5048296	0.13	
5978.00	9.080	270.650	5935.46	46.25	16.77	-559.23	40.2605133	-104.5048829	0.16	
6073.00	8.880	278.280	6029.30	48.17	17.91	-573.98	40.2605169	-104.5049357	1.27	
6168.00	9.050	295.240	6123.16	53.14	22.16	-588.00	40.2605289	-104.5049858	2.78	
6262.00	13.670	320.580	6215.35	65.60	33.90	-601.75	40.2605616	-104.5050346	7.13	
6357.00	20.550	337.120	6306.14	90.36	57.98	-615.39	40.2606281	-104.5050825	8.80	
6452.00	29.580	347.110	6392.14	129.24	96.30	-627.13	40.2607336	-104.5051230	10.47	
6547.00	38.510	350.070	6470.79	181.82	148.39	-637.48	40.2608770	-104.5051580	9.56	
6642.00	44.000	352.080	6542.18	244.10	210.26	-647.14	40.2610471	-104.5051901	5.94	
6736.00	53.000	353.030	6604.40	314.22	280.00	-656.21	40.2612388	-104.5052198	9.60	
6831.00	62.710	358.410	6654.92	394.50	360.08	-662.00	40.2614588	-104.5052373	11.28	
6926.00	71.050	0.190	6692.19	481.72	447.37	-663.03	40.2616984	-104.5052375	8.95	
7021.00	80.190	1.290	6715.76	573.44	539.28	-661.82	40.2619506	-104.5052295	9.69	
7115.00	87.530	359.500	6725.81	666.67	632.67	-661.19	40.2622069	-104.5052235	8.03	
7142.18†	88.139	359.543	6726.83	693.81	659.83	-661.41	40.2622815	-104.5052232	2.25	Cross 200' Hardline (200'FSL & 1003'FWL, SEC.36)
7210.00	89.660	359.650	6728.14	761.54	727.64	-661.89	40.2624676	-104.5052222	2.25	
7305.00	89.780	359.870	6728.60	856.43	822.64	-662.29	40.2627284	-104.5052198	0.26	
7400.00	89.880	359.840	6728.88	951.31	917.63	-662.53	40.2629891	-104.5052168	0.11	
7495.00	89.720	0.020	6729.21	1046.18	1012.63	-662.65	40.2632499	-104.5052134	0.25	
7590.00	89.750	359.700	6729.65	1141.06	1107.63	-662.88	40.2635107	-104.5052104	0.34	
7684.00	89.780	359.740	6730.04	1234.95	1201.63	-663.34	40.2637687	-104.5052083	0.05	
7779.00	89.410	359.560	6730.71	1329.84	1296.63	-663.92	40.2640294	-104.5052065	0.43	
7874.00	89.630	359.630	6731.51	1424.74	1391.62	-664.59	40.2642902	-104.5052051	0.24	
7969.00	89.750	359.510	6732.02	1519.64	1486.62	-665.30	40.2645510	-104.5052039	0.18	
8063.00	90.150	359.640	6732.10	1613.54	1580.61	-666.00	40.2648090	-104.5052026	0.45	
8253.00	89.510	359.680	6732.67	1803.33	1770.61	-667.13	40.2653305	-104.5051990	0.34	
8348.00	90.280	359.910	6732.84	1898.22	1865.61	-667.47	40.2655913	-104.5051964	0.85	
8443.00	90.090	0.070	6732.53	1993.09	1960.61	-667.48	40.2658520	-104.5051926	0.26	
8537.00	90.180	0.100	6732.31	2086.95	2054.61	-667.34	40.2661100	-104.5051884	0.10	

**REFERENCE WELLPATH IDENTIFICATION**

Operator	NOBLE ENERGY, INC	Well	GUTTERSEN STATE C36-775
Field	WELD COUNTY (NOBLE NAD 83 GRID)	API/Legal	05-123-49076
Facility	SEC.01-T03N-R64W	Wellbore	GUTTERSEN STATE C36-775 AWB
Slot	SLOT#12 GUTTERSEN STATE C36-775 (466'FNL & 1662'FWL,SEC.01)		

**WELLPATH DATA (206 stations)**

MD [ft]	Inclination [°]	Azimuth [°]	TVD [ft]	Vert Sect [ft]	North [ft]	East [ft]	Latitude	Longitude	DLS [°/100ft]	Comments
8632.00	90.000	359.690	6732.16	2181.82	2149.61	-667.52	40.2663708	-104.5051852	0.47	
8727.00	90.060	359.950	6732.11	2276.71	2244.60	-667.82	40.2666316	-104.5051824	0.28	
8822.00	90.150	359.880	6731.94	2371.58	2339.60	-667.96	40.2668923	-104.5051791	0.12	
8917.00	90.000	359.900	6731.81	2466.46	2434.60	-668.14	40.2671531	-104.5051759	0.16	
9011.00	90.000	0.070	6731.81	2560.33	2528.60	-668.16	40.2674111	-104.5051722	0.18	
9106.00	90.030	359.890	6731.79	2655.20	2623.60	-668.20	40.2676718	-104.5051685	0.19	
9201.00	90.150	359.920	6731.64	2750.08	2718.60	-668.36	40.2679326	-104.5051653	0.13	
9295.00	90.280	359.000	6731.29	2843.99	2812.60	-669.24	40.2681906	-104.5051647	0.99	
9390.00	90.000	359.020	6731.05	2938.92	2907.58	-670.88	40.2684514	-104.5051667	0.30	
9485.00	90.030	359.010	6731.03	3033.86	3002.57	-672.52	40.2687122	-104.5051688	0.03	
9580.00	89.820	359.060	6731.15	3128.80	3097.56	-674.12	40.2689729	-104.5051707	0.23	
9674.00	90.280	358.730	6731.07	3222.75	3191.54	-675.93	40.2692309	-104.5051734	0.60	
9769.00	90.000	359.230	6730.84	3317.69	3286.52	-677.62	40.2694917	-104.5051756	0.60	
9864.00	89.940	358.890	6730.89	3412.63	3381.51	-679.18	40.2697525	-104.5051774	0.36	
9959.00	90.400	359.050	6730.61	3507.57	3476.49	-680.89	40.2700132	-104.5051797	0.51	
10053.00	90.310	359.200	6730.03	3601.50	3570.48	-682.32	40.2702713	-104.5051811	0.19	
10148.00	88.950	358.900	6730.64	3696.44	3665.46	-683.90	40.2705320	-104.5051829	1.47	
10243.00	89.080	358.870	6732.27	3791.37	3760.43	-685.74	40.2707927	-104.5051857	0.14	
10337.00	89.010	358.910	6733.84	3885.30	3854.40	-687.57	40.2710507	-104.5051885	0.09	
10432.00	89.450	359.490	6735.12	3980.22	3949.38	-688.89	40.2713115	-104.5051894	0.77	
10527.00	89.410	0.110	6736.06	4075.10	4044.38	-689.22	40.2715722	-104.5051868	0.65	
10622.00	88.980	0.000	6737.40	4169.96	4139.37	-689.13	40.2718329	-104.5051826	0.47	
10716.00	88.400	359.930	6739.54	4263.80	4233.34	-689.19	40.2720909	-104.5051790	0.62	
10811.00	88.310	359.910	6742.27	4358.64	4328.30	-689.32	40.2723515	-104.5051757	0.10	
10906.00	88.340	359.930	6745.05	4453.47	4423.26	-689.45	40.2726122	-104.5051724	0.04	
11095.00	88.490	359.990	6750.28	4642.14	4612.19	-689.59	40.2731307	-104.5051652	0.09	
11190.00	88.340	359.860	6752.90	4736.98	4707.15	-689.71	40.2733914	-104.5051619	0.21	
11285.00	88.340	359.880	6755.66	4831.82	4802.11	-689.93	40.2736521	-104.5051588	0.02	
11380.00	88.460	359.880	6758.31	4926.66	4897.08	-690.13	40.2739127	-104.5051557	0.13	
11474.00	88.340	0.110	6760.93	5020.49	4991.04	-690.13	40.2741706	-104.5051520	0.28	
11569.00	88.430	0.080	6763.61	5115.32	5086.00	-689.98	40.2744313	-104.5051476	0.10	
11664.00	88.340	359.890	6766.29	5210.15	5180.96	-690.00	40.2746919	-104.5051439	0.22	
11759.00	88.550	359.960	6768.87	5304.99	5275.93	-690.13	40.2749526	-104.5051405	0.23	
11853.00	88.490	359.850	6771.29	5398.83	5369.90	-690.28	40.2752105	-104.5051373	0.13	
11948.00	88.310	359.930	6773.95	5493.67	5464.86	-690.46	40.2754712	-104.5051341	0.21	
12043.00	88.310	359.990	6776.75	5588.50	5559.82	-690.53	40.2757318	-104.5051305	0.06	
12137.00	90.460	359.960	6777.76	5682.36	5653.81	-690.57	40.2759898	-104.5051269	2.29	
12232.00	90.460	0.280	6776.99	5777.22	5748.80	-690.37	40.2762505	-104.5051223	0.34	
12327.00	90.490	0.100	6776.21	5872.06	5843.80	-690.06	40.2765113	-104.5051174	0.19	
12422.00	90.550	0.240	6775.34	5966.91	5938.79	-689.77	40.2767720	-104.5051126	0.16	
12517.00	90.400	0.470	6774.56	6061.74	6033.79	-689.19	40.2770327	-104.5051066	0.29	
12611.00	90.400	0.520	6773.90	6155.56	6127.78	-688.37	40.2772907	-104.5051000	0.05	
12706.00	90.580	0.330	6773.09	6250.39	6222.78	-687.67	40.2775514	-104.5050936	0.28	
12801.00	90.550	0.210	6772.15	6345.23	6317.77	-687.22	40.2778121	-104.5050882	0.13	
12896.00	90.550	0.270	6771.24	6440.07	6412.77	-686.82	40.2780729	-104.5050829	0.06	

**REFERENCE WELLPATH IDENTIFICATION**

Operator	NOBLE ENERGY, INC	Well	GUTTERSEN STATE C36-775
Field	WELD COUNTY (NOBLE NAD 83 GRID)	API/Legal	05-123-49076
Facility	SEC.01-T03N-R64W	Wellbore	GUTTERSEN STATE C36-775 AWB
Slot	SLOT#12 GUTTERSEN STATE C36-775 (466'FNL & 1662'FWL,SEC.01)		

**WELLPATH DATA (206 stations)**

MD (ft)	Inclination (°)	Azimuth (°)	TVD (ft)	Vert Sect (ft)	North (ft)	East (ft)	Latitude	Longitude	DLS (°/100ft)	Comments
12991.00	90.370	0.280	6770.48	6534.91	6507.76	-686.37	40.2783336	-104.5050775	0.19	
13086.00	90.340	0.160	6769.89	6629.75	6602.76	-686.00	40.2785943	-104.5050724	0.13	
13180.00	90.580	0.320	6769.13	6723.60	6696.76	-685.61	40.2788523	-104.5050672	0.31	
13275.00	90.460	0.180	6768.27	6818.44	6791.75	-685.19	40.2791130	-104.5050619	0.19	
13370.00	90.370	0.130	6767.58	6913.29	6886.75	-684.94	40.2793738	-104.5050571	0.11	
13465.00	90.430	0.370	6766.92	7008.13	6981.75	-684.52	40.2796345	-104.5050518	0.26	
13560.00	90.370	0.140	6766.26	7102.98	7076.74	-684.10	40.2798952	-104.5050465	0.25	
13749.00	90.310	0.330	6765.13	7291.67	7265.74	-683.33	40.2804140	-104.5050361	0.11	
13844.00	90.590	0.240	6764.39	7386.51	7360.73	-682.85	40.2806747	-104.5050306	0.31	
13939.00	90.370	0.200	6763.59	7481.35	7455.73	-682.49	40.2809354	-104.5050255	0.24	
14033.00	90.310	0.050	6763.04	7575.21	7549.73	-682.28	40.2811934	-104.5050209	0.17	
14128.00	90.550	359.990	6762.32	7670.07	7644.72	-682.25	40.2814542	-104.5050170	0.26	
14223.00	90.490	359.880	6761.46	7764.94	7739.72	-682.36	40.2817149	-104.5050136	0.13	
14318.00	90.400	359.960	6760.72	7859.81	7834.72	-682.49	40.2819757	-104.5050102	0.13	
14413.00	90.280	359.920	6760.16	7954.68	7929.72	-682.59	40.2822364	-104.5050068	0.13	
14507.00	90.370	359.580	6759.63	8048.57	8023.71	-683.00	40.2824944	-104.5050045	0.37	
14602.00	90.030	359.980	6759.29	8143.46	8118.71	-683.36	40.2827552	-104.5050019	0.55	
14697.00	90.280	0.140	6759.04	8238.32	8213.71	-683.27	40.2830160	-104.5049978	0.31	
14792.00	90.400	359.980	6758.47	8333.18	8308.71	-683.17	40.2832767	-104.5049936	0.21	
14887.00	90.460	0.040	6757.76	8428.04	8403.71	-683.15	40.2835374	-104.5049897	0.09	
14982.00	90.430	0.040	6757.02	8522.90	8498.70	-683.08	40.2837982	-104.5049856	0.03	
15076.00	90.550	0.310	6756.22	8616.75	8592.70	-682.80	40.2840562	-104.5049808	0.31	
15171.00	90.400	0.220	6755.43	8711.59	8687.69	-682.36	40.2843169	-104.5049754	0.18	
15266.00	90.400	359.990	6754.77	8806.45	8782.69	-682.18	40.2845776	-104.5049710	0.24	
15360.00	90.310	0.290	6754.18	8900.30	8876.69	-681.95	40.2848356	-104.5049664	0.33	
15455.00	90.460	0.140	6753.55	8995.15	8971.69	-681.60	40.2850964	-104.5049613	0.22	
15550.00	90.090	359.070	6753.09	9090.05	9066.68	-682.25	40.2853571	-104.5049598	1.19	
15645.00	90.650	359.050	6752.48	9184.98	9161.67	-683.81	40.2856179	-104.5049616	0.59	
15740.00	90.310	359.130	6751.68	9279.91	9256.65	-685.32	40.2858787	-104.5049632	0.37	
15834.00	90.520	359.200	6751.00	9373.84	9350.64	-686.69	40.2861367	-104.5049643	0.24	
15929.00	90.310	359.170	6750.31	9468.77	9445.63	-688.04	40.2863974	-104.5049653	0.22	
16024.00	90.310	359.190	6749.80	9563.70	9540.62	-689.40	40.2866582	-104.5049664	0.02	
16119.00	90.680	359.170	6748.98	9658.62	9635.60	-690.76	40.2869190	-104.5049674	0.39	
16214.00	90.310	358.980	6748.16	9753.56	9730.59	-692.29	40.2871797	-104.5049691	0.44	
16309.00	90.400	359.350	6747.57	9848.49	9825.57	-693.68	40.2874405	-104.5049703	0.40	
16403.00	90.340	358.930	6746.96	9942.42	9919.56	-695.09	40.2876985	-104.5049715	0.45	
16498.00	90.580	359.150	6746.20	10037.35	10014.54	-696.68	40.2879593	-104.5049734	0.34	
16593.00	90.090	358.740	6745.64	10132.29	10109.53	-698.43	40.2882200	-104.5049759	0.67	
16783.00	90.220	355.750	6745.13	10227.27	10299.28	-707.56	40.2887411	-104.5050010	1.58	
16877.00	89.780	349.960	6745.13	10415.99	10392.52	-719.25	40.2889974	-104.5050391	6.18	
16972.00	89.570	342.450	6745.67	10509.24	10484.71	-741.88	40.2892511	-104.5051165	7.91	
17067.00	89.690	347.230	6746.28	10602.09	10576.37	-766.72	40.2895035	-104.5052019	5.03	
17162.00	90.280	355.070	6746.31	10696.53	10670.17	-781.32	40.2897614	-104.5052504	8.28	
17257.00	90.520	0.070	6745.64	10791.49	10765.05	-785.35	40.2900220	-104.5052610	5.27	
17351.00	90.520	4.010	6744.79	10885.10	10858.97	-782.00	40.2902796	-104.5052453	4.19	

### REFERENCE WELLPATH IDENTIFICATION

Operator	NOBLE ENERGY, INC	Well	GUTTERSEN STATE C36-775
Field	WELD COUNTY (NOBLE NAD 83 GRID)	API/Legal	05-123-49076
Facility	SEC.01-T03N-R64W	Wellbore	GUTTERSEN STATE C36-775 AWB
Slot	SLOT#12 GUTTERSEN STATE C36-775 (466'FNL & 1662'FWL,SEC.01)		

### WELLPATH DATA (206 stations) † = interpolated, ‡ = extrapolated station

MD [ft]	Inclination [°]	Azimuth [°]	TVD [ft]	Vert Sect [ft]	North [ft]	East [ft]	Latitude	Longitude	DLS [°/100ft]	Comments
17446.00	90.650	4.490	6743.82	10979.33	10953.70	-774.96	40.2905394	-104.5052162	0.52	
17541.00	90.490	4.640	6742.88	11073.49	11048.40	-767.40	40.2907991	-104.5051853	0.23	
17636.00	90.550	4.590	6742.01	11167.65	11143.08	-759.76	40.2910588	-104.5051541	0.08	
17731.00	90.400	3.870	6741.23	11261.88	11237.82	-752.75	40.2913186	-104.5051252	0.77	
17825.00	90.430	4.360	6740.54	11355.15	11331.58	-746.01	40.2915757	-104.5050973	0.52	
17920.00	90.310	3.370	6739.93	11449.46	11426.36	-739.60	40.2918357	-104.5050705	1.05	
18015.00	90.430	0.490	6739.32	11544.10	11521.29	-736.41	40.2920962	-104.5050552	3.03	
18110.00	90.520	1.590	6738.53	11638.85	11616.27	-734.68	40.2923568	-104.5050452	1.16	
18205.00	90.370	1.470	6737.79	11733.55	11711.23	-732.14	40.2926174	-104.5050323	0.20	
18299.00	90.550	2.650	6737.04	11827.17	11805.17	-728.77	40.2928751	-104.5050164	1.27	
18394.00	90.430	2.630	6736.22	11921.71	11900.06	-724.39	40.2931354	-104.5049969	0.13	
18489.00	90.740	2.940	6735.25	12016.21	11994.95	-719.77	40.2933957	-104.5049765	0.46	
18584.00	90.620	2.660	6734.13	12110.72	12089.83	-715.13	40.2936560	-104.5049561	0.32	
18773.00	90.620	2.500	6732.08	12298.80	12278.62	-706.63	40.2941740	-104.5049180	0.08	
18868.00	90.460	1.730	6731.19	12393.42	12373.55	-703.12	40.2944344	-104.5049016	0.83	
18963.00	90.430	1.500	6730.45	12488.10	12468.51	-700.44	40.2946950	-104.5048882	0.24	
19058.00	90.370	2.040	6729.79	12582.77	12563.47	-697.51	40.2949555	-104.5048739	0.57	
19152.00	90.550	1.480	6729.03	12676.44	12657.42	-694.62	40.2952133	-104.5048597	0.63	
19247.00	90.650	2.160	6728.04	12771.09	12752.36	-691.61	40.2954738	-104.5048451	0.72	
19342.00	90.550	359.440	6727.04	12865.87	12847.34	-690.28	40.2957345	-104.5048365	2.86	
19437.00	90.710	359.630	6726.00	12960.77	12942.33	-691.05	40.2959952	-104.5048355	0.26	
19532.00	90.400	358.840	6725.08	13055.69	13037.32	-692.32	40.2962560	-104.5048362	0.89	
19626.00	90.680	359.280	6724.19	13149.62	13131.30	-693.86	40.2965140	-104.5048379	0.55	
19816.00	90.520	359.110	6722.20	13339.47	13321.27	-696.53	40.2970355	-104.5048399	0.12	
19894.00	90.550	359.340	6721.47	13417.40	13399.26	-697.59	40.2972496	-104.5048405	0.30	Last BH MWD Survey
19919.00‡	90.550	359.340	6721.23	13442.38	13424.26	-697.87	40.2973182	-104.5048405	0.00	Projection to Bit (2426'FSL & 1006'FWL, SEC.24)

**REFERENCE WELLPATH IDENTIFICATION**

Operator	NOBLE ENERGY, INC	Well	GUTTERSEN STATE C36-775
Field	WELD COUNTY (NOBLE NAD 83 GRID)	API/Legal	05-123-49076
Facility	SEC.01-T03N-R64W	Wellbore	GUTTERSEN STATE C36-775 AWB
Slot	SLOT#12 GUTTERSEN STATE C36-775 (466'FNL & 1662'FWL,SEC.01)		

**TARGETS**

Name	TVD [ft]	North [ft]	East [ft]	Grid East [US ft]	Grid North [US ft]	Latitude	Longitude	Shape
GUTTERSEN STATE C36 Sec.01-T3N-R64W	-17.00	20.65	3114.68	3281388.57	1339308.70	40.2604100	-104.4917200	polygon
	2D Polygon: dimensions not calculated							
GUTTERSEN STATE C36 Sec.24-T4N-R64W	-17.00	20.65	3114.68	3281388.57	1339308.70	40.2604100	-104.4917200	polygon
	2D Polygon: dimensions not calculated							
GUTTERSEN STATE C36 Sec.25-T4N-R64W	-17.00	20.65	3114.68	3281388.57	1339308.70	40.2604100	-104.4917200	polygon
	2D Polygon: dimensions not calculated							
GUTTERSEN STATE C36 Sec.36-T4N-R64W	-17.00	20.65	3114.68	3281388.57	1339308.70	40.2604100	-104.4917200	polygon
	2D Polygon: dimensions not calculated							
GUTTERSEN STATE C36-775 BHL PLAN (2426'FSL & 995'FWL,SEC.24)	6695.00	13425.99	-709.22	3277564.84	1352713.44	40.2973233	-104.5048811	point
GUTTERSEN STATE C36-775 REV-2 BHL PLAN (2426'FSL & 995'FWL,SEC.24)	6725.00	13425.99	-709.22	3277564.84	1352713.44	40.2973233	-104.5048811	point
GUTTERSEN STATE C36-775 LP PLAN (200'FSL & 1001'FWL,SEC.36)	6728.00	659.83	-663.21	3277610.85	1339947.85	40.2622815	-104.5052296	point
GUTTERSEN STATE C36-775 VS TARGET 1	6728.00	3569.52	-672.90	<b>3277601.16</b>	<b>1342857.41</b>	40.2702683	-104.5051473	point
GUTTERSEN STATE C36-775 VS TARGET 2	6772.00	5597.13	-680.37	<b>3277593.69</b>	<b>1344884.93</b>	40.2758339	-104.5050926	point

**WELLPATH COMPOSITION - Ref Wellbore: GUTTERSEN STATE C36-775 AWB    Ref Wellpath: GUTTERSEN STATE C36-775 AWP**

Start MD [ft]	End MD [ft]	Positional Uncertainty Model	Log Name/Comment	Wellbore	Survey Date
0.00	1858.00	OWSG MWD rev2 (MS+IFR1)	13.5" EVO Surface OWSG MWD rev2 (MS+IFR1) <161'-1858'>	GUTTERSEN STATE C36-775 AWB	4/4/2023
1858.00	19919.00	OWSG MWD rev2 (MS+IFR1)	8.5" Hole ATC OWSG MWD rev2 (MS+IFR1) <1999'-19894'>	GUTTERSEN STATE C36-775 AWB	4/6/2023

**REFERENCE WELLPATH IDENTIFICATION**

Operator	NOBLE ENERGY, INC	Well	GUTTERSEN STATE C36-775
Field	WELD COUNTY (NOBLE NAD 83 GRID)	API/Legal	05-123-49076
Facility	SEC.01-T03N-R64W	Wellbore	GUTTERSEN STATE C36-775 AWB
Slot	SLOT#12 GUTTERSEN STATE C36-775 (466'FNL & 1662'FWL,SEC.01)		

**WELLPATH COMMENTS**

MD [ft]	Inclination [°]	Azimuth [°]	TVD [ft]	Comment
161.00	0.440	289.940	161.00	First BH MWD Survey
7142.18	88.139	359.543	6726.83	Cross 200' Hardline (200'FSL & 1003'FWL, SEC.36)
19894.00	90.550	359.340	6721.47	Last BH MWD Survey
19919.00	90.550	359.340	6721.23	Projection to Bit (2426'FSL & 1006'FWL, SEC.24)