

NOBLE ENERGY, INC

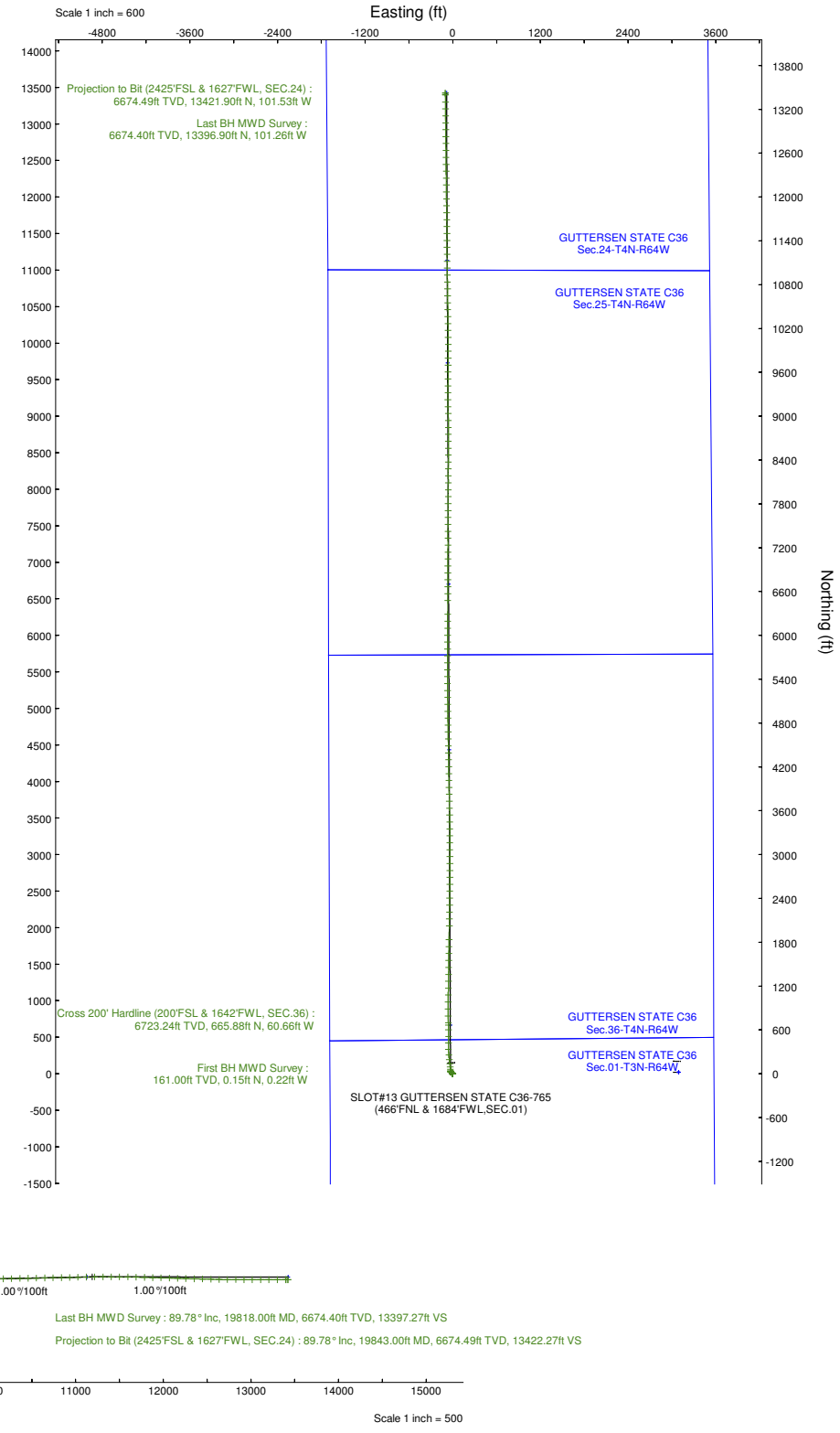
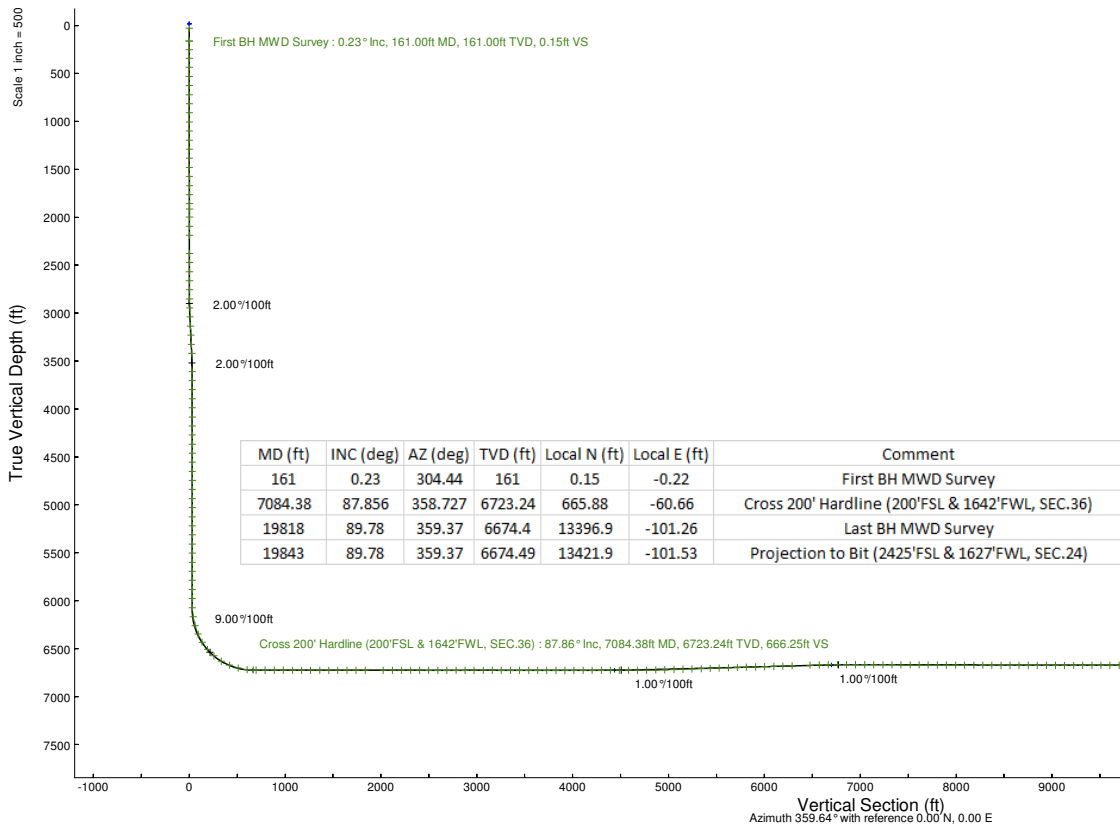
Location: COLORADO Slot: SLOT#13 GUTTERSEN STATE C36-765 (466'FNL & 1684'FWL, SEC.01)
 Field: WELD COUNTY (NOBLE NAD 83 GRID) Well: GUTTERSEN STATE C36-765
 Facility: SEC.01-T03N-R64W Wellbore: GUTTERSEN STATE C36-765 PWB

Plot reference wellpath is GUTTERSEN STATE C36-765 (REV-B.0) PWP

True vertical depths are referenced to PD 268 (4746'GL+29'KB@4775'RKb) (RKB)	Grid System: NAD83 / Lambert Colorado SP, Northern Zone (501), US feet
Reference wellpath measured depths are referenced to PD 268 (4746'GL+29'KB@4775'RKb) (RKB)	North Reference: Grid north
PD 268 (4746'GL+29'KB@4775'RKb) (RKB) to Mean Sea Level: 4775 feet	Scale: True distance
Mean Sea Level to Ground level (At Slot: SLOT#13 GUTTERSEN STATE C36-765 (466'FNL & 1684'FWL, SEC.01)): 0 feet	Coordinates are in feet referenced to Slot
Offset wellpath MDs are referenced to each path's default MD datum	Depths are in feet
	Created by: martsam01 on 2023-05-24; Database: WA_Deriver

Location Information

Facility Name		Grid East (US ft)	Grid North (US ft)	Latitude	Longitude
SEC.01-T03N-R64W		3278229.920	1339437.650	40°15'39.1032"N	104°30'10.9152"W
Slot		Local N (ft)	Local E (ft)	Grid East (US ft)	Grid North (US ft)
SLOT#13 GUTTERSEN STATE C36-765 (466'FNL & 1684'FWL, SEC.01)		-149.35	66.43	3278296.352	1339288.304
PD 268 (4746'GL+29'KB@4775'RKb) (RKB) to Ground level (At Slot: SLOT#13 GUTTERSEN STATE C36-765 (466'FNL & 1684'FWL, SEC.01))					
Mean Sea Level to Ground level (At Slot: SLOT#13 GUTTERSEN STATE C36-765 (466'FNL & 1684'FWL, SEC.01))					
PD 268 (4746'GL+29'KB@4775'RKb) (RKB) to Mean Sea Level					4775ft





Actual Wellpath Report

GUTTERSEN STATE C36-765 AWP
Page 1 of 8



REFERENCE WELLPATH IDENTIFICATION

Operator	NOBLE ENERGY, INC	Well	GUTTERSEN STATE C36-765
Field	WELD COUNTY (NOBLE NAD 83 GRID)	API/Legal	05-123-4290
Facility	SEC.01-T03N-R64W	Wellbore	GUTTERSEN STATE C36-765 AWB
Slot	SLOT#13 GUTTERSEN STATE C36-765 (466'FNL & 1684'FWL,SEC.01)		

REPORT SETUP INFORMATION

Projection System	NAD83 / Lambert Colorado SP, Northern Zone (501), US feet	Software System	WellArchitect® 6.0
North Reference	Grid	User	Martsam01
Scale	0.999957	Report Generated	5/23/2023 at 4:46:37 PM
Convergence at slot	0.64° East	Database	WA_Denver

WELLPATH LOCATION

	Local coordinates		Grid coordinates		Geographic coordinates	
	North[ft]	East[ft]	Easting[US ft]	Northing[US ft]	Latitude	Longitude
Slot Location	-149.35	66.43	3278296.35	1339288.30	40.2604500°	-104.5028000°
Facility Reference Pt			3278229.92	1339437.65	40.2608620°	-104.5030320°
Field Reference Pt			3000000.00	4454105.15	48.7761986°	-105.5000000°

WELLPATH DATUM

Calculation method	Minimum curvature	PD 268 (4746'GL+29'KB@4775'RKB) (RKB) to Facility Vertical Datum	4775.00ft
Horizontal Reference Pt	Slot	PD 268 (4746'GL+29'KB@4775'RKB) (RKB) to Mean Sea Level	4775.00ft
Vertical Reference Pt	PD 268 (4746'GL+29'KB@4775'RKB) (RKB)	PD 268 (4746'GL+29'KB@4775'RKB) (RKB) to Ground Level at Slot (SLOT#13 GUTTERSEN STATE C36-765 (466'FNL & 1684'FWL,SEC.01))	4775.00ft
MD Reference Pt	PD 268 (4746'GL+29'KB@4775'RKB) (RKB)	Section Origin	N 0.00, E 0.00 ft
Field Vertical Reference	Mean Sea Level	Section Azimuth	359.64°

REFERENCE WELLPATH IDENTIFICATION

Operator	NOBLE ENERGY, INC	Well	GUTTERSEN STATE C36-765
Field	WELD COUNTY (NOBLE NAD 83 GRID)	API/Legal	05-123-49290
Facility	SEC.01-T03N-R64W	Wellbore	GUTTERSEN STATE C36-765 AWB
Slot	SLOT#13 GUTTERSEN STATE C36-765 (466'FNL & 1684'FWL,SEC.01)		

WELLPATH DATA (209 stations) † = interpolated, ‡ = extrapolated station

MD [ft]	Inclination [°]	Azimuth [°]	TVD [ft]	Vert Sect [ft]	North [ft]	East [ft]	Latitude	Longitude	DLS [°/100ft]	Comments
0.00†	0.000	304.440	0.00	0.00	0.00	0.00	40.2604500	-104.5028000	0.00	
29.00	0.000	304.440	29.00	0.00	0.00	0.00	40.2604500	-104.5028000	0.00	
161.00	0.230	304.440	161.00	0.15	0.15	-0.22	40.2604504	-104.5028008	0.17	First BH MWD Survey
251.00	0.450	269.520	251.00	0.25	0.25	-0.72	40.2604507	-104.5028026	0.33	
342.00	0.310	280.990	342.00	0.30	0.29	-1.32	40.2604508	-104.5028047	0.17	
437.00	0.160	316.410	437.00	0.45	0.44	-1.66	40.2604513	-104.5028059	0.21	
532.00	0.200	333.010	531.99	0.69	0.68	-1.83	40.2604519	-104.5028065	0.07	
626.00	0.230	90.690	625.99	0.84	0.83	-1.72	40.2604523	-104.5028061	0.39	
721.00	0.140	354.650	720.99	0.95	0.94	-1.54	40.2604526	-104.5028055	0.30	
816.00	0.080	0.760	815.99	1.13	1.12	-1.55	40.2604531	-104.5028055	0.06	
911.00	0.050	47.750	910.99	1.22	1.22	-1.51	40.2604534	-104.5028054	0.06	
1005.00	0.040	63.040	1004.99	1.27	1.26	-1.46	40.2604535	-104.5028052	0.02	
1100.00	0.100	61.180	1099.99	1.32	1.31	-1.35	40.2604536	-104.5028048	0.06	
1195.00	0.130	70.800	1194.99	1.40	1.39	-1.18	40.2604538	-104.5028042	0.04	
1290.00	0.090	76.550	1289.99	1.45	1.44	-1.00	40.2604540	-104.5028035	0.04	
1384.00	0.160	76.150	1383.99	1.49	1.49	-0.80	40.2604541	-104.5028028	0.07	
1479.00	0.180	27.540	1478.99	1.66	1.65	-0.61	40.2604546	-104.5028021	0.15	
1574.00	0.380	29.180	1573.99	2.06	2.06	-0.38	40.2604557	-104.5028013	0.21	
1669.00	0.240	355.320	1668.99	2.54	2.53	-0.25	40.2604570	-104.5028008	0.24	
1763.00	0.220	336.270	1762.99	2.90	2.90	-0.34	40.2604580	-104.5028011	0.08	
1858.00	0.440	306.940	1857.99	3.29	3.28	-0.70	40.2604590	-104.5028024	0.28	
1915.00	0.550	289.080	1914.99	3.51	3.50	-1.13	40.2604596	-104.5028039	0.33	
1999.00	0.220	70.170	1998.98	3.70	3.69	-1.36	40.2604602	-104.5028047	0.87	
2094.00	0.090	243.050	2093.98	3.73	3.72	-1.26	40.2604602	-104.5028044	0.33	
2188.00	0.170	155.620	2187.98	3.56	3.56	-1.27	40.2604598	-104.5028044	0.20	
2378.00	0.140	262.170	2377.98	3.28	3.27	-1.38	40.2604590	-104.5028048	0.13	
2473.00	0.130	227.650	2472.98	3.19	3.18	-1.58	40.2604588	-104.5028055	0.08	
2567.00	0.130	321.670	2566.98	3.20	3.19	-1.72	40.2604588	-104.5028060	0.20	
2662.00	0.100	291.250	2661.98	3.32	3.31	-1.86	40.2604591	-104.5028065	0.07	
2757.00	0.090	49.360	2756.98	3.40	3.39	-1.88	40.2604593	-104.5028066	0.17	
2852.00	0.280	302.790	2851.98	3.57	3.56	-2.02	40.2604598	-104.5028071	0.33	
2946.00	3.080	313.040	2945.93	5.43	5.41	-4.06	40.2604650	-104.5028143	2.98	
3041.00	3.920	312.520	3040.76	9.40	9.34	-8.32	40.2604759	-104.5028294	0.88	
3136.00	3.930	312.150	3135.53	13.81	13.72	-13.13	40.2604881	-104.5028465	0.03	
3231.00	3.990	311.720	3230.31	18.22	18.11	-18.01	40.2605003	-104.5028638	0.07	
3326.00	3.870	311.170	3325.08	22.56	22.42	-22.89	40.2605122	-104.5028811	0.13	
3420.00	3.970	310.190	3418.86	26.78	26.61	-27.76	40.2605239	-104.5028984	0.13	
3610.00	0.410	307.800	3608.69	31.48	31.27	-33.33	40.2605369	-104.5029181	1.87	
3705.00	0.100	158.440	3703.69	31.61	31.40	-33.56	40.2605372	-104.5029190	0.52	
3799.00	0.040	134.550	3797.69	31.51	31.30	-33.51	40.2605369	-104.5029188	0.07	
3894.00	0.070	27.860	3892.69	31.54	31.33	-33.46	40.2605370	-104.5029186	0.09	
3989.00	0.090	341.660	3987.69	31.66	31.45	-33.46	40.2605374	-104.5029186	0.07	
4084.00	0.100	353.780	4082.69	31.82	31.60	-33.49	40.2605378	-104.5029187	0.02	
4178.00	0.070	39.620	4176.69	31.94	31.73	-33.46	40.2605381	-104.5029186	0.08	
4273.00	0.110	63.640	4271.69	32.03	31.81	-33.34	40.2605384	-104.5029182	0.06	



Actual Wellpath Report

GUTTERSEN STATE C36-765 AWP

Page 3 of 8


REFERENCE WELLPATH IDENTIFICATION

Operator	NOBLE ENERGY, INC	Well	GUTTERSEN STATE C36-765
Field	WELD COUNTY (NOBLE NAD 83 GRID)	API/Legal	05-123-49290
Facility	SEC.01-T03N-R64W	Wellbore	GUTTERSEN STATE C36-765 AWB
Slot	SLOT#13 GUTTERSEN STATE C36-765 (466'FNL & 1684'FWL,SEC.01)		

WELLPATH DATA (209 stations) † = interpolated, ‡ = extrapolated station

MD [ft]	Inclination [°]	Azimuth [°]	TVD [ft]	Vert Sect [ft]	North [ft]	East [ft]	Latitude	Longitude	DLS [°/100ft]	Comments
4368.00	0.100	301.080	4366.69	32.11	31.90	-33.33	40.2605386	-104.5029181	0.19	
4463.00	0.190	36.430	4461.69	32.28	32.07	-33.31	40.2605390	-104.5029180	0.23	
4557.00	0.240	33.020	4555.69	32.57	32.36	-33.11	40.2605398	-104.5029173	0.05	
4652.00	0.140	31.980	4650.69	32.83	32.62	-32.94	40.2605406	-104.5029167	0.11	
4747.00	0.100	59.870	4745.69	32.97	32.76	-32.81	40.2605409	-104.5029162	0.07	
4841.00	0.590	159.500	4839.69	32.56	32.35	-32.57	40.2605398	-104.5029154	0.65	
4936.00	0.190	297.850	4934.69	32.17	31.97	-32.53	40.2605387	-104.5029153	0.78	
5031.00	0.090	63.180	5029.69	32.28	32.07	-32.61	40.2605390	-104.5029155	0.27	
5125.00	0.040	225.410	5123.69	32.29	32.08	-32.56	40.2605391	-104.5029154	0.14	
5220.00	0.060	321.500	5218.69	32.31	32.10	-32.62	40.2605391	-104.5029156	0.08	
5315.00	0.070	322.730	5313.69	32.39	32.19	-32.68	40.2605394	-104.5029158	0.01	
5410.00	0.070	254.290	5408.69	32.42	32.22	-32.78	40.2605394	-104.5029161	0.08	
5504.00	0.030	231.360	5502.69	32.39	32.18	-32.85	40.2605394	-104.5029164	0.05	
5599.00	0.070	309.520	5597.69	32.41	32.21	-32.91	40.2605394	-104.5029166	0.07	
5694.00	0.060	154.780	5692.69	32.41	32.20	-32.94	40.2605394	-104.5029167	0.13	
5789.00	0.060	158.740	5787.69	32.32	32.11	-32.90	40.2605391	-104.5029166	0.00	
5883.00	0.070	62.890	5881.69	32.29	32.09	-32.83	40.2605391	-104.5029163	0.10	
5978.00	0.190	130.710	5976.69	32.22	32.01	-32.66	40.2605389	-104.5029157	0.19	
6073.00	0.980	30.810	6071.68	32.81	32.61	-32.12	40.2605405	-104.5029138	1.08	
6168.00	9.590	357.970	6166.20	41.43	41.23	-31.99	40.2605642	-104.5029129	9.24	
6263.00	15.250	357.670	6258.94	61.84	61.64	-32.78	40.2606202	-104.5029149	5.96	
6357.00	22.490	354.710	6347.83	92.15	91.93	-34.94	40.2607034	-104.5029215	7.77	
6452.00	32.050	352.720	6432.17	135.38	135.13	-39.82	40.2608221	-104.5029372	10.11	
6547.00	40.780	352.810	6508.55	191.32	191.02	-46.91	40.2609758	-104.5029604	9.19	
6642.00	49.510	354.090	6575.49	258.21	257.87	-54.53	40.2611595	-104.5029850	9.24	
6737.00	59.730	357.090	6630.43	335.36	334.99	-60.35	40.2613713	-104.5030027	11.06	
6831.00	68.100	3.590	6671.76	419.64	419.27	-59.68	40.2616027	-104.5029969	10.85	
6926.00	75.300	359.220	6701.58	509.71	509.36	-57.54	40.2618499	-104.5029856	8.75	
7021.00	83.920	358.700	6718.70	603.06	602.69	-59.24	40.2621061	-104.5029880	9.09	
7084.38†	87.856	358.727	6723.24	666.25	665.88	-60.66	40.2622796	-104.5029905	6.21	Cross 200' Hardline (200'FSL & 1642'FWL, SEC.36)
7116.00	89.820	358.740	6723.88	697.86	697.49	-61.36	40.2623663	-104.5029917	6.21	
7210.00	89.910	358.520	6724.11	791.85	791.46	-63.60	40.2626244	-104.5029960	0.25	
7305.00	89.850	0.580	6724.31	886.84	886.45	-64.35	40.2628851	-104.5029948	2.17	
7400.00	89.910	0.760	6724.50	981.83	981.44	-63.24	40.2631458	-104.5029870	0.20	
7495.00	89.600	0.800	6724.91	1076.81	1076.43	-61.94	40.2634065	-104.5029786	0.33	
7590.00	90.120	0.920	6725.14	1171.78	1171.42	-60.52	40.2636672	-104.5029696	0.56	
7685.00	89.880	0.910	6725.14	1266.76	1266.41	-59.00	40.2639279	-104.5029604	0.25	
7779.00	90.180	0.790	6725.09	1360.74	1360.40	-57.61	40.2641858	-104.5029516	0.34	
7874.00	90.030	0.720	6724.92	1455.72	1455.39	-56.36	40.2644465	-104.5029433	0.17	
7969.00	90.000	0.890	6724.89	1550.70	1550.38	-55.02	40.2647072	-104.5029347	0.18	
8064.00	89.970	0.830	6724.92	1645.68	1645.37	-53.60	40.2649679	-104.5029257	0.07	
8158.00	90.030	0.810	6724.92	1739.66	1739.36	-52.25	40.2652258	-104.5029171	0.07	
8253.00	90.000	0.810	6724.89	1834.64	1834.35	-50.91	40.2654865	-104.5029085	0.03	
8443.00	89.940	0.860	6724.99	2024.60	2024.33	-48.14	40.2660079	-104.5028909	0.04	
8538.00	89.850	0.790	6725.17	2119.58	2119.32	-46.77	40.2662685	-104.5028822	0.12	



Actual Wellpath Report

GUTTERSEN STATE C36-765 AWP

Page 4 of 8


REFERENCE WELLPATH IDENTIFICATION

Operator	NOBLE ENERGY, INC	Well	GUTTERSEN STATE C36-765
Field	WELD COUNTY (NOBLE NAD 83 GRID)	API/Legal	05-123-49290
Facility	SEC.01-T03N-R64W	Wellbore	GUTTERSEN STATE C36-765 AWP
Slot	SLOT#13 GUTTERSEN STATE C36-765 (466'FNL & 1684'FWL,SEC.01)		

WELLPATH DATA (209 stations)

MD [ft]	Inclination [°]	Azimuth [°]	TVD [ft]	Vert Sect [ft]	North [ft]	East [ft]	Latitude	Longitude	DLS [°/100ft]	Comments
8632.00	90.120	0.870	6725.19	2213.56	2213.31	-45.41	40.2665265	-104.5028735	0.30	
8727.00	89.850	1.060	6725.22	2308.53	2308.30	-43.81	40.2667871	-104.5028640	0.35	
8822.00	89.690	0.420	6725.60	2403.51	2403.29	-42.58	40.2670478	-104.5028557	0.69	
8917.00	89.940	0.960	6725.91	2498.49	2498.28	-41.44	40.2673085	-104.5028478	0.63	
9011.00	89.910	0.850	6726.03	2592.47	2592.27	-39.95	40.2675665	-104.5028387	0.12	
9106.00	89.910	359.870	6726.18	2687.46	2687.27	-39.36	40.2678272	-104.5028327	1.03	
9201.00	89.880	359.790	6726.35	2782.46	2782.27	-39.64	40.2680880	-104.5028299	0.09	
9296.00	90.770	359.910	6725.81	2877.46	2877.26	-39.89	40.2683487	-104.5028270	0.95	
9390.00	89.880	359.890	6725.28	2971.46	2971.26	-40.05	40.2686067	-104.5028238	0.95	
9485.00	89.940	359.850	6725.43	3066.45	3066.26	-40.27	40.2688675	-104.5028207	0.08	
9580.00	89.780	359.930	6725.66	3161.45	3161.26	-40.45	40.2691282	-104.5028175	0.19	
9674.00	89.850	359.850	6725.96	3255.45	3255.26	-40.63	40.2693863	-104.5028144	0.11	
9769.00	90.030	359.600	6726.06	3350.45	3350.26	-41.08	40.2696470	-104.5028122	0.32	
9864.00	89.880	358.960	6726.14	3445.45	3445.25	-42.28	40.2699078	-104.5028127	0.69	
9959.00	89.880	358.940	6726.34	3540.44	3540.23	-44.02	40.2701686	-104.5028151	0.02	
10054.00	89.850	359.010	6726.56	3635.44	3635.22	-45.72	40.2704293	-104.5028173	0.08	
10148.00	89.850	358.910	6726.81	3729.43	3729.20	-47.43	40.2706873	-104.5028197	0.11	
10243.00	89.910	359.010	6727.01	3824.42	3824.19	-49.15	40.2709481	-104.5028220	0.12	
10338.00	90.150	359.070	6726.96	3919.42	3919.17	-50.74	40.2712089	-104.5028239	0.26	
10432.00	90.310	358.890	6726.58	4013.41	4013.16	-52.41	40.2714669	-104.5028261	0.26	
10527.00	90.060	358.920	6726.27	4108.40	4108.14	-54.23	40.2717277	-104.5028288	0.27	
10622.00	90.150	359.150	6726.10	4203.40	4203.13	-55.83	40.2719884	-104.5028307	0.26	
10717.00	90.180	358.990	6725.83	4298.39	4298.11	-57.37	40.2722492	-104.5028324	0.17	
10811.00	90.120	359.070	6725.58	4392.39	4392.10	-58.96	40.2725072	-104.5028343	0.11	
10906.00	90.120	359.160	6725.38	4487.38	4487.09	-60.43	40.2727680	-104.5028357	0.09	
11001.00	90.180	359.130	6725.13	4582.38	4582.08	-61.85	40.2730287	-104.5028370	0.07	
11096.00	90.000	359.040	6724.98	4677.37	4677.06	-63.37	40.2732895	-104.5028386	0.21	
11190.00	89.970	359.120	6725.01	4771.37	4771.05	-64.87	40.2735475	-104.5028402	0.09	
11285.00	91.970	359.370	6723.40	4866.35	4866.03	-66.13	40.2738083	-104.5028409	2.12	
11380.00	91.720	358.960	6720.34	4961.29	4960.97	-67.51	40.2740689	-104.5028420	0.51	
11475.00	91.910	359.430	6717.33	5056.24	5055.91	-68.84	40.2743295	-104.5028429	0.53	
11569.00	91.850	359.390	6714.25	5150.19	5149.85	-69.81	40.2745874	-104.5028426	0.08	
11664.00	91.880	359.180	6711.16	5245.14	5244.80	-71.00	40.2748480	-104.5028430	0.22	
11759.00	91.660	358.940	6708.22	5340.09	5339.74	-72.55	40.2751087	-104.5028448	0.34	
11854.00	91.880	0.240	6705.29	5435.04	5434.69	-73.23	40.2753693	-104.5028434	1.39	
11948.00	91.790	0.020	6702.28	5528.99	5528.64	-73.02	40.2756272	-104.5028389	0.25	
12043.00	91.880	0.300	6699.23	5623.94	5623.59	-72.75	40.2758878	-104.5028341	0.31	
12138.00	91.720	0.370	6696.25	5718.88	5718.54	-72.20	40.2761484	-104.5028283	0.18	
12232.00	91.790	0.330	6693.37	5812.83	5812.50	-71.63	40.2764063	-104.5028224	0.09	
12327.00	91.690	0.140	6690.49	5907.78	5907.45	-71.24	40.2766669	-104.5028172	0.23	
12422.00	91.850	0.410	6687.55	6002.73	6002.40	-70.78	40.2769275	-104.5028117	0.33	
12517.00	91.660	0.310	6684.64	6097.68	6097.36	-70.18	40.2771881	-104.5028058	0.23	
12612.00	91.760	0.200	6681.81	6192.63	6192.31	-69.76	40.2774487	-104.5028004	0.16	
12707.00	91.790	0.200	6678.87	6287.58	6287.27	-69.43	40.2777094	-104.5027954	0.03	
12896.00	91.690	0.370	6673.13	6476.48	6476.18	-68.49	40.2782278	-104.5027844	0.10	



Actual Wellpath Report

GUTTERSEN STATE C36-765 AWP

Page 5 of 8


REFERENCE WELLPATH IDENTIFICATION

Operator	NOBLE ENERGY, INC	Well	GUTTERSEN STATE C36-765
Field	WELD COUNTY (NOBLE NAD 83 GRID)	API/Legal	05-123-49290
Facility	SEC.01-T03N-R64W	Wellbore	GUTTERSEN STATE C36-765 AWB
Slot	SLOT#13 GUTTERSEN STATE C36-765 (466'FNL & 1684'FWL,SEC.01)		

WELLPATH DATA (209 stations)

MD [ft]	Inclination [°]	Azimuth [°]	TVD [ft]	Vert Sect [ft]	North [ft]	East [ft]	Latitude	Longitude	DLS [°/100ft]	Comments
12991.00	91.790	0.610	6670.24	6571.43	6571.13	-67.68	40.2784884	-104.5027777	0.27	
13086.00	91.750	359.900	6667.31	6666.38	6666.08	-67.26	40.2787491	-104.5027724	0.75	
13181.00	89.750	0.170	6666.06	6761.36	6761.07	-67.20	40.2790098	-104.5027683	2.12	
13275.00	89.720	0.130	6666.50	6855.36	6855.07	-66.95	40.2792678	-104.5027637	0.05	
13370.00	89.940	0.290	6666.78	6950.35	6950.07	-66.60	40.2795285	-104.5027586	0.29	
13465.00	89.630	0.260	6667.14	7045.34	7045.07	-66.15	40.2797893	-104.5027531	0.33	
13560.00	89.630	0.360	6667.75	7140.34	7140.06	-65.63	40.2800500	-104.5027474	0.11	
13655.00	89.690	0.040	6668.32	7235.33	7235.06	-65.30	40.2803107	-104.5027424	0.34	
13750.00	89.720	359.680	6668.80	7330.33	7330.06	-65.53	40.2805715	-104.5027394	0.38	
13844.00	89.940	0.400	6669.08	7424.32	7424.06	-65.47	40.2808295	-104.5027354	0.80	
13939.00	89.850	0.220	6669.26	7519.32	7519.06	-64.95	40.2810902	-104.5027297	0.21	
14034.00	89.780	0.510	6669.56	7614.31	7614.05	-64.35	40.2813509	-104.5027237	0.31	
14128.00	89.850	0.560	6669.87	7708.30	7708.05	-63.47	40.2816089	-104.5027168	0.09	
14223.00	89.600	0.320	6670.32	7803.29	7803.05	-62.74	40.2818696	-104.5027104	0.36	
14318.00	89.630	0.380	6670.96	7898.28	7898.04	-62.16	40.2821304	-104.5027045	0.07	
14413.00	89.630	0.250	6671.58	7993.27	7993.04	-61.64	40.2823911	-104.5026988	0.14	
14508.00	89.780	0.080	6672.06	8088.26	8088.04	-61.37	40.2826518	-104.5026939	0.24	
14603.00	89.690	359.720	6672.50	8183.26	8183.04	-61.53	40.2829126	-104.5026907	0.39	
14698.00	89.850	0.450	6672.89	8278.26	8278.03	-61.39	40.2831733	-104.5026864	0.79	
14792.00	89.690	0.190	6673.26	8372.25	8372.03	-60.87	40.2834313	-104.5026807	0.32	
14887.00	89.660	359.990	6673.80	8467.24	8467.03	-60.72	40.2836921	-104.5026763	0.21	
14982.00	89.820	0.620	6674.23	8562.24	8562.03	-60.21	40.2839528	-104.5026707	0.68	
15076.00	90.030	359.080	6674.36	8656.23	8656.02	-60.46	40.2842108	-104.5026678	1.65	
15171.00	90.120	0.270	6674.23	8751.23	8751.02	-61.00	40.2844716	-104.5026659	1.26	
15266.00	90.000	359.610	6674.13	8846.23	8846.02	-61.10	40.2847323	-104.5026624	0.71	
15361.00	90.030	0.090	6674.11	8941.23	8941.02	-61.34	40.2849931	-104.5026595	0.51	
15456.00	89.480	358.990	6674.51	9036.23	9036.01	-62.11	40.2852538	-104.5026584	1.29	
15550.00	89.850	356.750	6675.06	9130.17	9129.94	-65.60	40.2855118	-104.5026671	2.42	
15645.00	90.280	0.760	6674.95	9225.14	9224.90	-67.66	40.2857725	-104.5026707	4.25	
15740.00	90.430	0.770	6674.37	9320.12	9319.89	-66.40	40.2860331	-104.5026623	0.16	
15835.00	90.000	0.210	6674.01	9415.11	9414.88	-65.58	40.2862939	-104.5026556	0.74	
15930.00	90.120	0.410	6673.91	9510.10	9509.88	-65.07	40.2865546	-104.5026499	0.25	
16024.00	90.090	0.150	6673.74	9604.10	9603.88	-64.61	40.2868126	-104.5026445	0.28	
16119.00	90.120	0.670	6673.56	9699.09	9698.88	-63.93	40.2870733	-104.5026382	0.55	
16214.00	91.200	0.580	6672.47	9794.07	9793.86	-62.89	40.2873340	-104.5026307	1.14	
16309.00	91.260	0.360	6670.43	9889.03	9888.84	-62.11	40.2875947	-104.5026240	0.24	
16404.00	91.390	359.230	6668.23	9984.01	9983.81	-62.45	40.2878553	-104.5026214	1.20	
16499.00	91.360	359.430	6665.95	10078.98	10078.78	-63.56	40.2881160	-104.5026216	0.21	
16593.00	91.260	359.390	6663.81	10172.95	10172.75	-64.53	40.2883740	-104.5026213	0.11	
16688.00	91.140	359.380	6661.82	10267.93	10267.72	-65.55	40.2886347	-104.5026211	0.13	
16783.00	91.200	359.000	6659.88	10362.91	10362.69	-66.89	40.2888954	-104.5026221	0.40	
16878.00	91.020	359.270	6658.04	10457.89	10457.66	-68.33	40.2891561	-104.5026234	0.34	
16973.00	91.110	359.210	6656.27	10552.87	10552.64	-69.59	40.2894169	-104.5026241	0.11	
17067.00	91.320	359.290	6654.28	10646.84	10646.61	-70.82	40.2896748	-104.5026247	0.24	
17162.00	91.200	359.210	6652.19	10741.82	10741.58	-72.06	40.2899355	-104.5026253	0.15	



Actual Wellpath Report

GUTTERSEN STATE C36-765 AWP
Page 6 of 8


REFERENCE WELLPATH IDENTIFICATION

Operator	NOBLE ENERGY, INC	Well	GUTTERSEN STATE C36-765
Field	WELD COUNTY (NOBLE NAD 83 GRID)	API/Legal	05-123-49290
Facility	SEC.01-T03N-R64W	Wellbore	GUTTERSEN STATE C36-765 AWB
Slot	SLOT#13 GUTTERSEN STATE C36-765 (466'FNL & 1684'FWL,SEC.01)		

WELLPATH DATA (209 stations) † = interpolated, ‡ = extrapolated station

MD [ft]	Inclination [°]	Azimuth [°]	TVD [ft]	Vert Sect [ft]	North [ft]	East [ft]	Latitude	Longitude	DLS [°/100ft]	Comments
17257.00	91.230	359.410	6650.17	10836.80	10836.55	-73.21	40.2901963	-104.5026256	0.21	
17352.00	91.170	359.310	6648.18	10931.77	10931.52	-74.27	40.2904570	-104.5026255	0.12	
17447.00	91.200	359.170	6646.22	11026.75	11026.49	-75.53	40.2907177	-104.5026262	0.15	
17541.00	91.050	359.380	6644.37	11120.73	11120.47	-76.72	40.2909757	-104.5026267	0.27	
17636.00	90.990	359.390	6642.68	11215.72	11215.45	-77.73	40.2912364	-104.5026265	0.06	
17731.00	89.720	359.470	6642.09	11310.71	11310.44	-78.68	40.2914971	-104.5026261	1.34	
17826.00	89.820	359.620	6642.47	11405.71	11405.44	-79.43	40.2917579	-104.5026250	0.19	
17921.00	89.780	359.460	6642.81	11500.71	11500.43	-80.20	40.2920187	-104.5026239	0.17	
18015.00	89.630	359.290	6643.29	11594.71	11594.43	-81.22	40.2922767	-104.5026238	0.24	
18110.00	88.430	359.410	6644.90	11689.69	11689.40	-82.30	40.2925374	-104.5026238	1.27	
18205.00	88.340	359.240	6647.58	11784.65	11784.36	-83.42	40.2927981	-104.5026240	0.20	
18300.00	88.340	359.100	6650.33	11879.61	11879.31	-84.79	40.2930588	-104.5026251	0.15	
18395.00	88.400	359.630	6653.03	11974.57	11974.26	-85.85	40.2933194	-104.5026250	0.56	
18489.00	88.370	359.300	6655.68	12068.53	12068.22	-86.72	40.2935773	-104.5026244	0.35	
18584.00	88.370	359.420	6658.38	12163.49	12163.18	-87.78	40.2938380	-104.5026243	0.13	
18679.00	88.370	359.180	6661.08	12258.45	12258.13	-88.94	40.2940987	-104.5026247	0.25	
18774.00	88.400	359.320	6663.76	12353.41	12353.09	-90.19	40.2943593	-104.5026253	0.15	
18868.00	88.430	359.240	6666.36	12447.37	12447.04	-91.37	40.2946173	-104.5026257	0.09	
18963.00	88.340	359.530	6669.04	12542.33	12542.00	-92.39	40.2948779	-104.5026256	0.32	
19058.00	88.370	359.470	6671.77	12637.30	12636.96	-93.22	40.2951386	-104.5026247	0.07	
19153.00	89.970	359.490	6673.14	12732.28	12731.94	-94.08	40.2953993	-104.5026240	1.68	
19248.00	89.850	359.340	6673.29	12827.28	12826.94	-95.05	40.2956601	-104.5026236	0.20	
19342.00	89.970	359.350	6673.44	12921.28	12920.93	-96.12	40.2959181	-104.5026237	0.13	
19437.00	89.850	359.350	6673.59	13016.28	13015.92	-97.20	40.2961789	-104.5026237	0.13	
19532.00	89.940	359.540	6673.76	13111.28	13110.92	-98.12	40.2964397	-104.5026232	0.22	
19626.00	89.820	359.290	6673.96	13205.28	13204.91	-99.08	40.2966977	-104.5026228	0.30	
19721.00	89.940	359.370	6674.16	13300.27	13299.91	-100.19	40.2969585	-104.5026230	0.15	
19818.00	89.780	359.370	6674.40	13397.27	13396.90	-101.26	40.2972247	-104.5026229	0.16	Last BH MWD Survey
19843.00‡	89.780	359.370	6674.49	13422.27	13421.90	-101.53	40.2972933	-104.5026229	0.00	Projection to Bit (2425'FSL & 1627'FWL, SEC.24)

REFERENCE WELLPATH IDENTIFICATION

Operator	NOBLE ENERGY, INC	Well	GUTTERSEN STATE C36-765
Field	WELD COUNTY (NOBLE NAD 83 GRID)	API/Legal	05-123-49290
Facility	SEC.01-T03N-R64W	Wellbore	GUTTERSEN STATE C36-765 AWB
Slot	SLOT#13 GUTTERSEN STATE C36-765 (466'FNL & 1684'FWL,SEC.01)		

TARGETS

Name	TVD [ft]	North [ft]	East [ft]	Grid East [US ft]	Grid North [US ft]	Latitude	Longitude	Shape
GUTTERSEN STATE C36 Sec.01-T3N-R64W	-17.00	20.40	3092.35	3281388.57	1339308.70	40.2604100	-104.4917200	polygon
	2D Polygon: dimensions not calculated							
GUTTERSEN STATE C36 Sec.24-T4N-R64W	-17.00	20.40	3092.35	3281388.57	1339308.70	40.2604100	-104.4917200	polygon
	2D Polygon: dimensions not calculated							
GUTTERSEN STATE C36 Sec.25-T4N-R64W	-17.00	20.40	3092.35	3281388.57	1339308.70	40.2604100	-104.4917200	polygon
	2D Polygon: dimensions not calculated							
GUTTERSEN STATE C36 Sec.36-T4N-R64W	-17.00	20.40	3092.35	3281388.57	1339308.70	40.2604100	-104.4917200	polygon
	2D Polygon: dimensions not calculated							
GUTTERSEN STATE C36-765 BHL PLAN (2425'FSL & 1643'FWL,SEC.24)	6643.00	13424.37	-85.30	3278211.06	1352712.07	40.2972996	-104.5025646	point
GUTTERSEN STATE C36-765 VS Target 4	6643.00	11129.74	-76.15	3278220.21	1350417.54	40.2910011	-104.5026243	point
GUTTERSEN STATE C36-765 VS Target 2	6670.00	6699.76	-58.46	3278237.89	1345987.76	40.2788412	-104.5027395	point
GUTTERSEN STATE C36-765 VS Target 3	6670.00	9729.75	-70.56	3278225.79	1349017.62	40.2871583	-104.5026607	point
GUTTERSEN STATE C36-765 LP PLAN (200'FSL & 1653'FWL,SEC.36)	6725.00	665.88	-34.39	3278261.96	1339954.15	40.2622788	-104.5028964	point
GUTTERSEN STATE C36-765 VS Target 1	6725.00	4434.80	-49.42	3278246.93	1343722.90	40.2726241	-104.5027984	point

WELLPATH COMPOSITION - Ref Wellbore: GUTTERSEN STATE C36-765 AWB Ref Wellpath: GUTTERSEN STATE C36-765 AWP

Start MD [ft]	End MD [ft]	Positional Uncertainty Model	Log Name/Comment	Wellbore	Survey Date
29.00	1915.00	OWSG MWD rev2 (MS+IFR1)	13.5" Hole EVO surface OWSG MWD rev2 (MS+IFR1) <161'-1915'>	GUTTERSEN STATE C36-765 AWB	4/4/2023
1915.00	19843.00	OWSG MWD rev2 (MS+IFR1)	8.5" ATC OWSG MWD rev2 (MS+IFR1) <1999'-19818'>	GUTTERSEN STATE C36-765 AWB	4/17/2023

REFERENCE WELLPATH IDENTIFICATION

Operator	NOBLE ENERGY, INC	Well	GUTTERSEN STATE C36-765
Field	WELD COUNTY (NOBLE NAD 83 GRID)	API/Legal	05-123-49290
Facility	SEC.01-T03N-R64W	Wellbore	GUTTERSEN STATE C36-765 AWB
Slot	SLOT#13 GUTTERSEN STATE C36-765 (466'FNL & 1684'FWL,SEC.01)		

WELLPATH COMMENTS

MD [ft]	Inclination [°]	Azimuth [°]	TVD [ft]	Comment
161.00	0.230	304.440	161.00	First BH MWD Survey
7084.38	87.856	358.727	6723.24	Cross 200' Hardline (200'FSL & 1642'FWL, SEC.36)
19818.00	89.780	359.370	6674.40	Last BH MWD Survey
19843.00	89.780	359.370	6674.49	Projection to Bit (2425'FSL & 1627'FWL, SEC.24)