

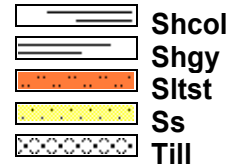
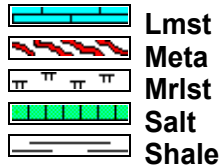
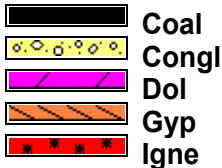
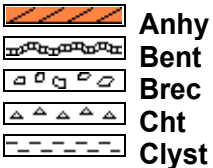
Logging Program

Wireline Logging Solutions (WLS)
Denver, CO 720-570-6670

Logs Run
Array Induction
Photodensity Neutron
Dipole Sonic
Microlog

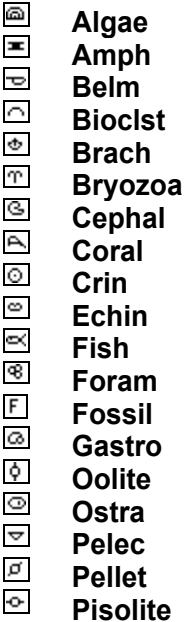
Interval

ROCK TYPES

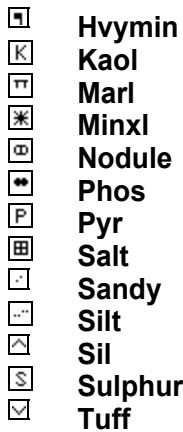
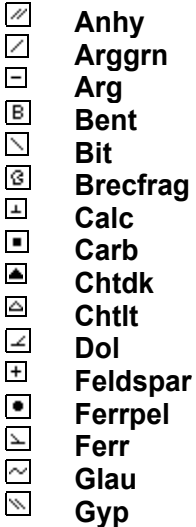


ACCESSORIES

FOSSIL



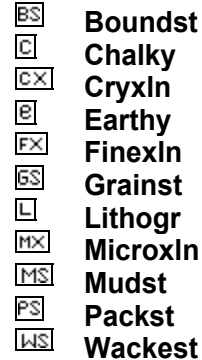
MINERAL



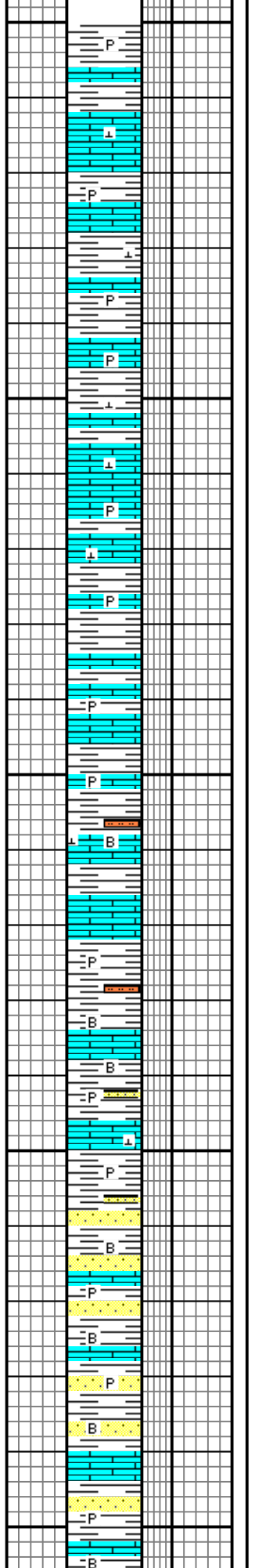
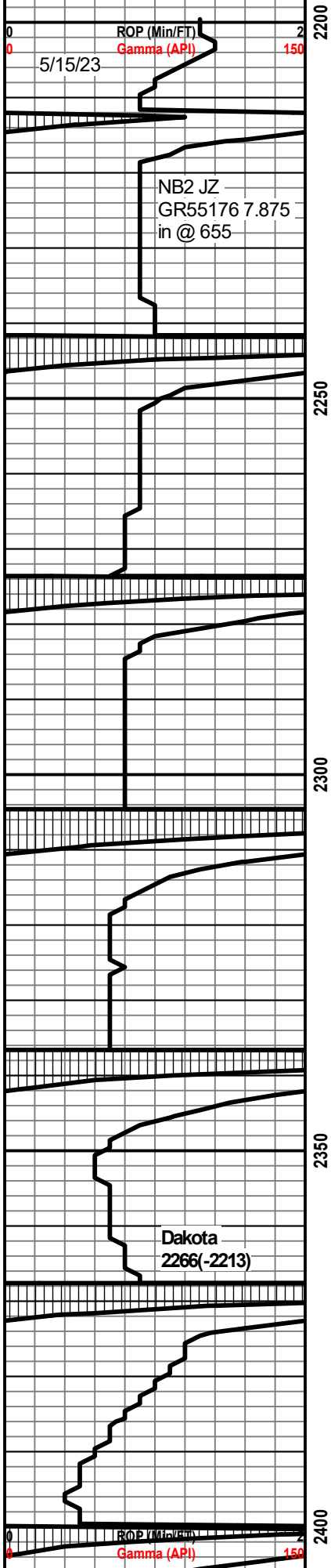
STRINGER



TEXTURE



ROP/ENG DATA										Total Gas (TG)		
ROP (Min/FT) —										Total Gas(TG) (Units) —		
Gamma (API) —										C1 (units) - - - - -		
										C2 (units)		
										C3 (units)		
										C4 (units)		
										C5 (units)		
										Helium - - - - -		
0	ROP (Min/FT)	2	MD	21	Porosity	Lithology	Grain Size	Oil Show	Geological Descriptions	0	Total Gas(TG) (Units)	50
0	Gamma (API)	150			25% 20% 15% 10% 5%				tr bent sft gy	0	C1 (units)	5000
										0	C2 (units)	5000
										0	C3 (units)	5000
										0	C4 (units)	5000
										0	C5 (units)	5000
										0	Helium	100
30 Samples caught by Crews, Lagged by Geologist												



SH mot mgy-gybrn sft-firm blkly slty vcarb calc

LS ltgy fri xfl slty occ sdy

SH aa w/tr pyr

SH mot mgy-gybrn sft-firm blkly slty vcarb

LS ltgy fri xfl slty occ sdy

SH aa

LS strgs tan-gy gra-xfl fri chky

SH m-dkgy sft pty crb w/occ tr sltst sltst strgs

LS tan-wh xfl-gran fri incr slty w/thin intbd sltst strgs

SH aa mcalc

tr thin slty SS strgs gy vfg

SH mot mgy-gybrn sft-firm blkly slty vcarb calc w/thin SS strgs aa

SS ltgy vfg slty fri scalc

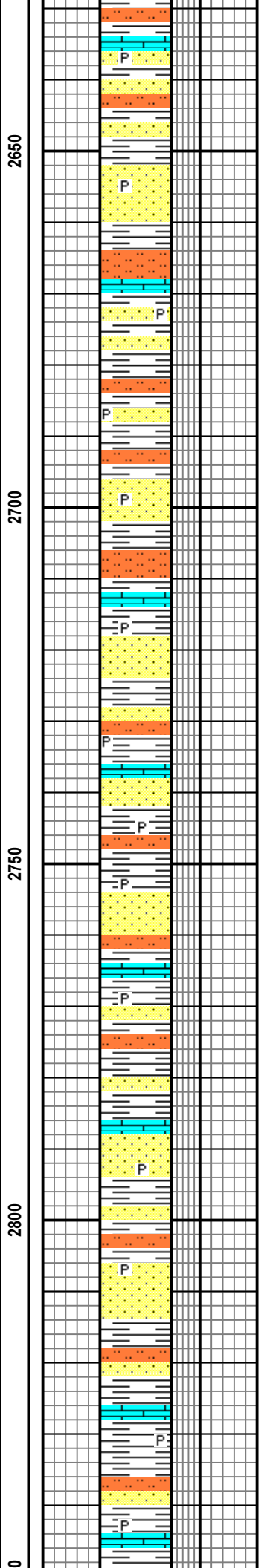
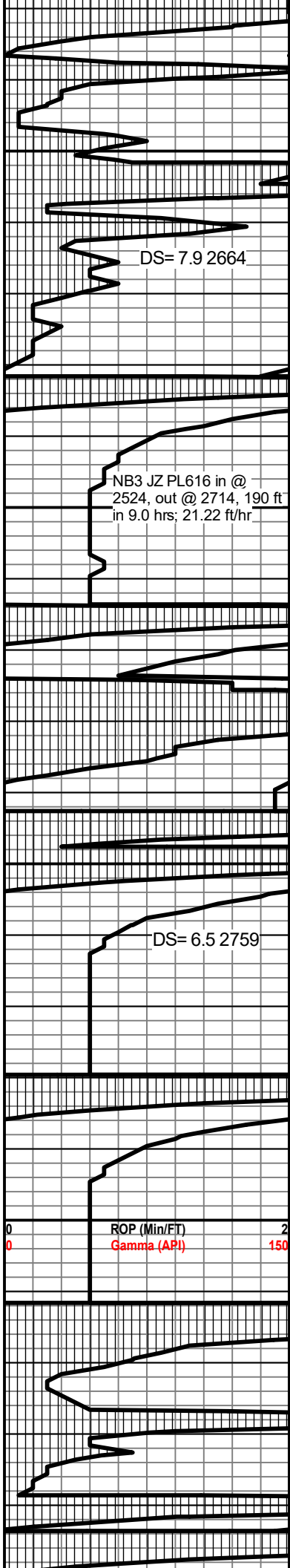
SS wh-gy vfg fri slty carb vf pyr por-tt nfoc

LS ltgy fri xfl slty occ sdy

Bent incr amt gy sft grn

0	Total Gas(TG) (Units)	50
0	C1 (units)	5000
0	C2 (units)	5000
0	C3 (units)	5000
0	C4 (units)	5000
0	C5 (units)	5000
0	Helium	100

0	Total Gas(TG) (Units)	50
0	C1 (units)	5000
0	C2 (units)	5000
0	C3 (units)	5000



intbd strgs SS/SLTST/SH vpyr

SS wh-clr vfg fri silcmt; carb w/sh prtgs; slty; tr pyr; por-p-occ fr nsfo

SH bk-dkgy sft blk cy csrb w/intbd thin strg ss/sltst slpyr

incr tr pyr

SS mgy-wh f-vfg fri-firm silcmt carb mtrx slpyr por-p-tt nsfo

SH aa w/intbd SLTST; occ thin gy LS

SS ltgy-crm vfg/slty fri csrb mtrx silcmtl slty pyr; por-tt nsfoc

SH bk-mgy firm blk cy carb occ ltred sh tr; w/SS a nsfoc

SS aa incr vfg slty silcmt carb mtrx por-tt nsfoc

SH mgy-incr ltgy sft plty carb w/intbd ss/sltst

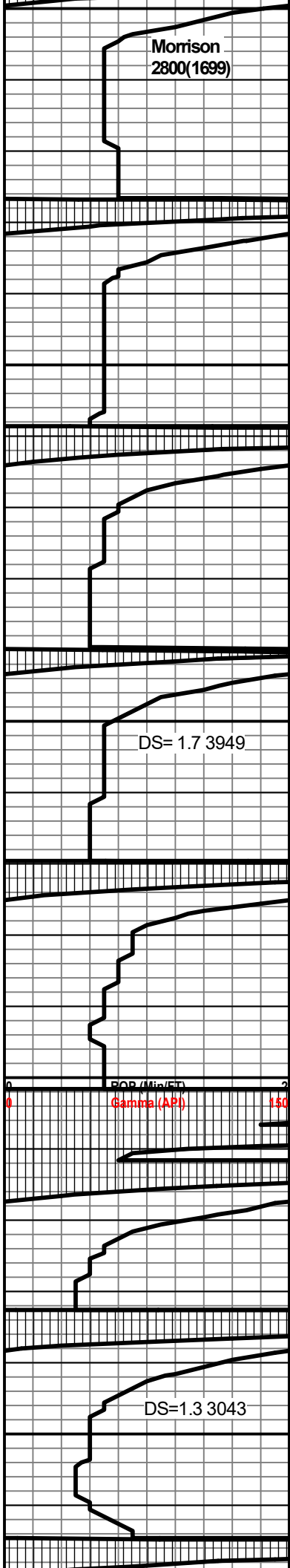
tr pyr

SS ltgy-wh fri vfg-slty sh prtgs csrb slty slpyr silcmt; por-p nsfoc

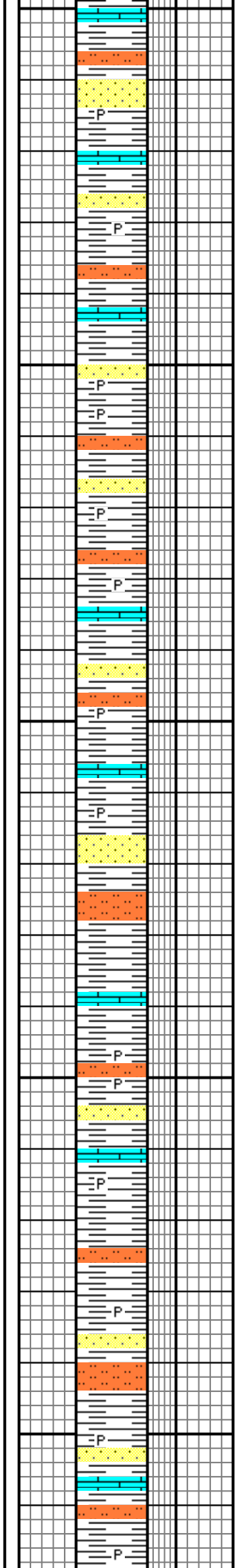
SH gn-ltgy sft blk cy slcalc

LS ltgy xfl fri slty w/intbd sltst/ss strgs

0	Total Gas(TG) (Units)	50
0	C1 (units)	5000
0	C2 (units)	5000
0	C3 (units)	5000
0	C4 (units)	5000
0	C5 (units)	5000
0	Helium	100



285
2900
2950
3000
3050



SS wh vfg/slty fri mtrx dirty/pyr

SH incr mot gn-gygn/red sft blk calc

incr tr pyr gran

SH mot gn-mgy-red-purple sft blk slty slcalc

SS/SLTST strgs vfg-slty fri mtrx pyr clc cmt

SH a incr mot red/purp-gy sft blk cslc w/intbd s/sltst

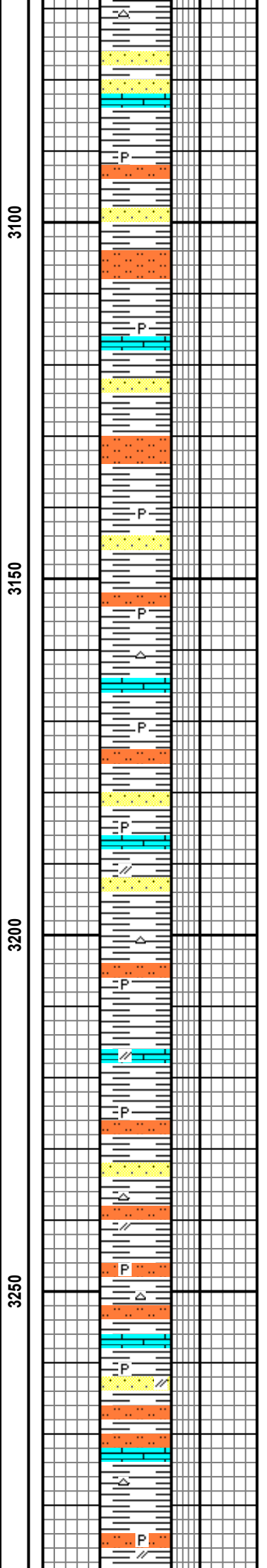
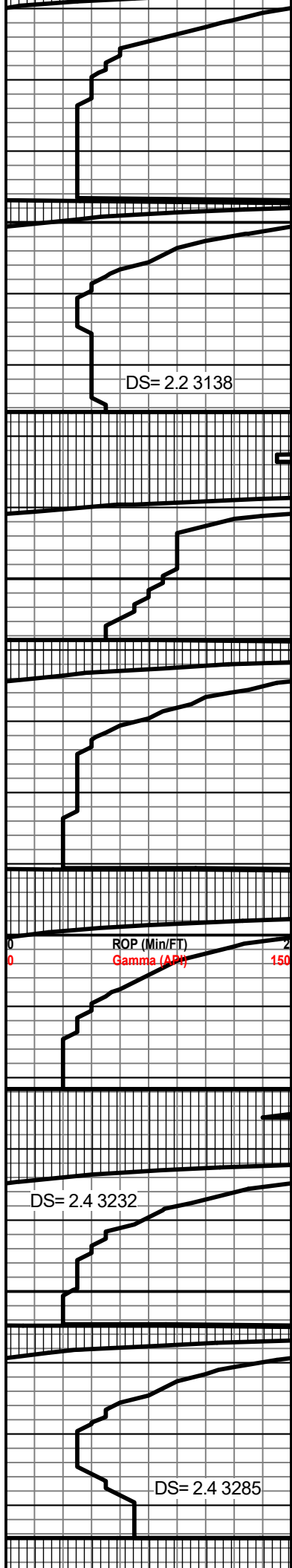
incr tr pyr

SH mot gn-gygn/mgy-red/purp sft blk slty mcalc

strgs SS/SLTST grd g lgy-wh vfg fri slpyr

trcht lgy ang

0	Total Gas(TG) (Units)	50
0	C1 (units)	5000
0	C2 (units)	5000
0	C3 (units)	5000
0	C4 (units)	5000
0	C5 (units)	5000
0	Helium	100



SS aa w/occ thin tsn ls strgs

SLTST/SS strgs wh-gygn vfri slpyr slcalc

decr amt LS ltgy xfl fri slty

SH red/orng-gygn-purp sft frm blk calc slty

incr tr cht wh-pink gran-hd

SH aa incr amt sltst w/thin ls strgs

occ tr anhy wh fri

SH mot gygn-purp-red-gy sft blk slcalc w/ls strgs

incr tr cht wh & occ anhy

SH mot gy-gn-red/purp sft plty slcslc slty occ sdy

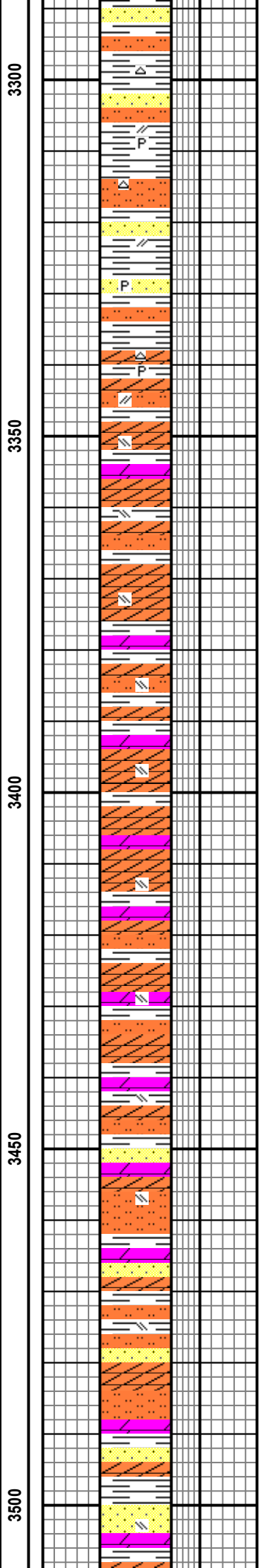
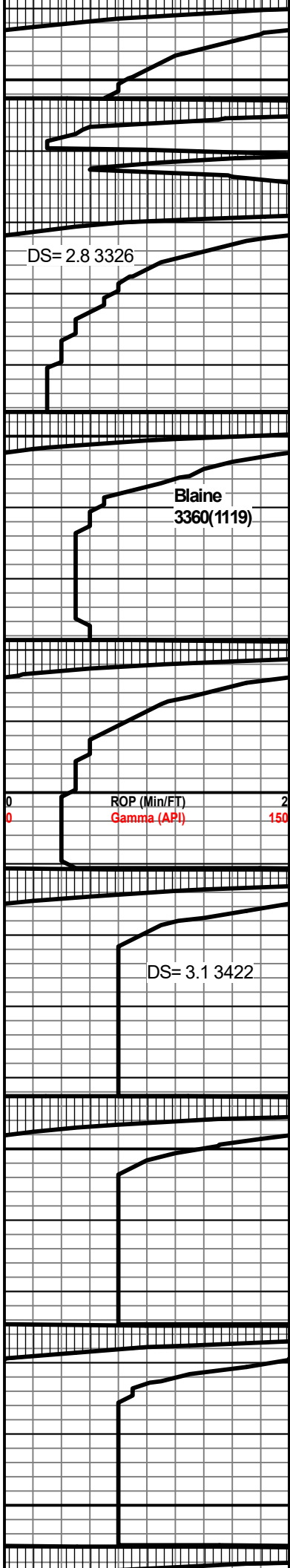
LS strgs ltgy fri gran slty

SLTST incr rd-redbrn fri slcalc

SH mot red-gy-gygn sft plty sdy/dltdt slcslc

incr tr nhy wh gran

0	Total Gas(TG) (Units)	50
0	C1 (units)	5000
0	C2 (units)	5000
0	C3 (units)	5000
0	C4 (units)	5000
0	C5 (units)	5000
0	Helium	100



SS strgs wh vfg-slty fri grdg to red sltst in incr smt

SH rebrn-gygn-ltgy sft plty mcalc slty w/intbdb sltst strgs

incr mt anhy slty

ANHY wh firm-sft gran

SH mgy-red sft blkly slty

ANHY wh-pink firm plty occ gran w/occ strgs DOL ltgy xfxl hd

ANHY aa w/occ tr gyp

ANHY w/intbd strgs SH gy-red sft plty & incr smt gyp wh

DOL strgs aa

ANHY wh-pink firm-occ hd blkly occ slty

ANHY aa w/intbd strgs DOL & SH strgs

SH red sft plty slty

tr gyp

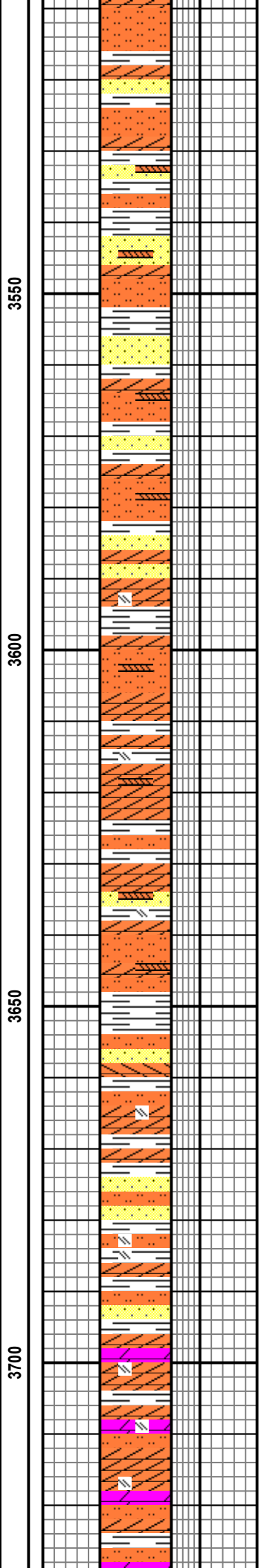
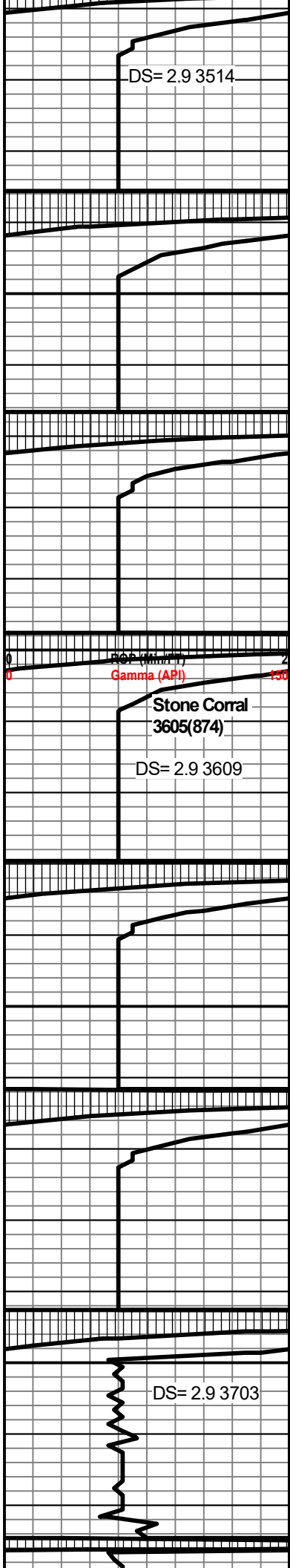
SLTST red-org fri anhy w/tr gyp

SH redbrn firm blkly

SLTST aa incr anhy

SS red-org vfg fri silcnt tr pyr & anhy

0	Total Gas(TG) (Units)	50
0	C1 (units)	5000
0	C2 (units)	5000
0	C3 (units)	5000
0	C4 (units)	5000
0	C5 (units)	5000
0	Helium	100



SLTST red-org fri anhy

SLTST aa w/SS strgs wh vfg dirty mtrx anhy

SS/SLTST strgs intbd anhy

SH red-org-gy sft blk

ANHY wh-gy firm

SLTST org-red fri anhy mtrx w/SS aa & anhy strgs

SH aa

ANHY wh-gy strgs

SH gy-red sft blk

ANHY gy-wh firm blk

SLTST redb m-org vfri grd to vfg SS gy-red fri sly

SLTST redbm-org vfri occ sdy vfg SS anhy tr gyp

ANHY gy-wh firm blk

SS/SLTST red-mgy fri vfg-sly grd to org sltst anhy

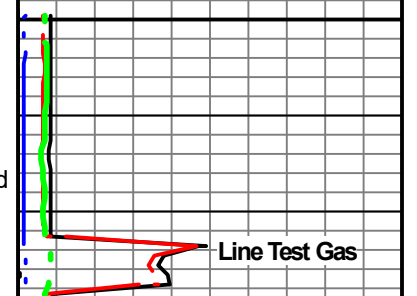
intbd SLTST/SH red w/SS strgs anhy

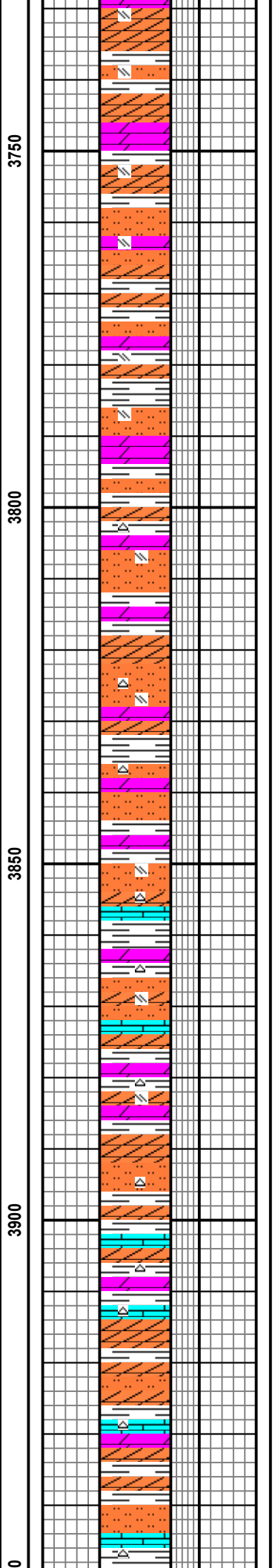
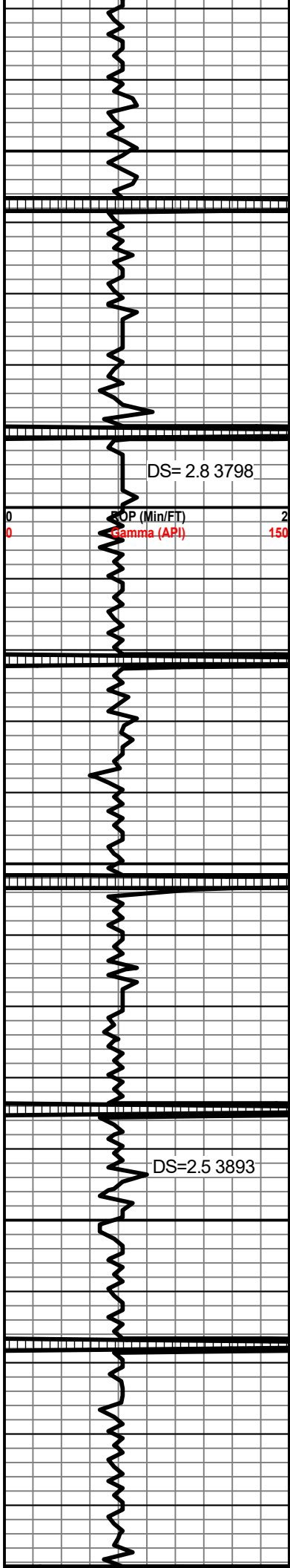
ANHY wh-pink/gy firm xfl w/intbd sltst & occ dol

ANHY aa w/beds DOL gy xfl firm-hd dns tr gyp

W 902
V 40
WL nc
pH 7.0
cK nc
CL 500
Ca Hvy
LCM 8#/bbl

0	Total Gas(TG) (Units)	50
0	C1 (units)	5000
0	C2 (units)	5000
0	C3 (units)	5000
0	C4 (units)	5000
0	C5 (units)	5000
0	Helium	100





tr gyp

SH redbrn-mgy sft pty intbd w/in DOL/ANHY aa

SLTST org-redbrn fri arg anhy intbd w/DOL strgs & ANHY

tr gyp

SLTST aa incr org-gy vfri anhy w/ DOL gy xfl hd dns & slty SH

DOL gy xfl hd dns w/SH sft red blkly slty

tr cht & gyp

SLTST mgy-redbrn fri arg mtrx slcht tr w/DOL & red SH aa

SH org-red sft blkly tr cht

SLTST redbrn-mgy-org fri nhy vsiscalc w/thin ls strgs

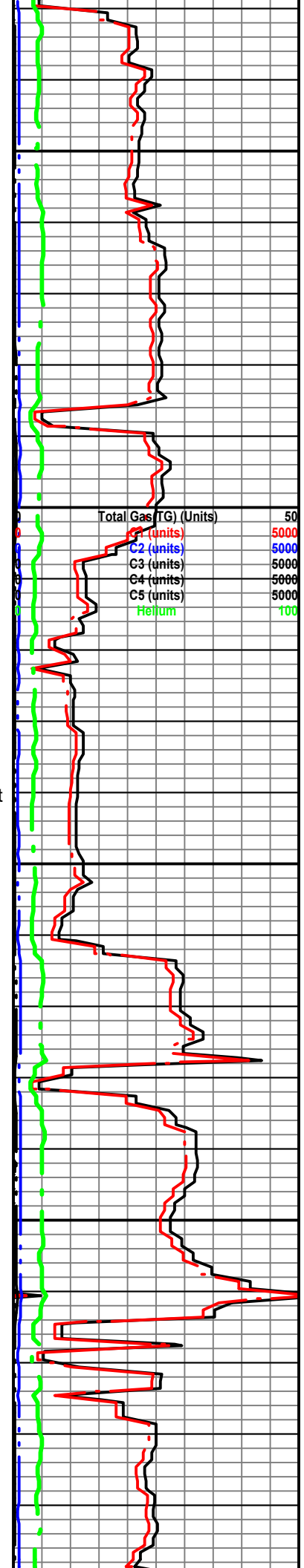
ANHY ltgy-wh firm blkly gran

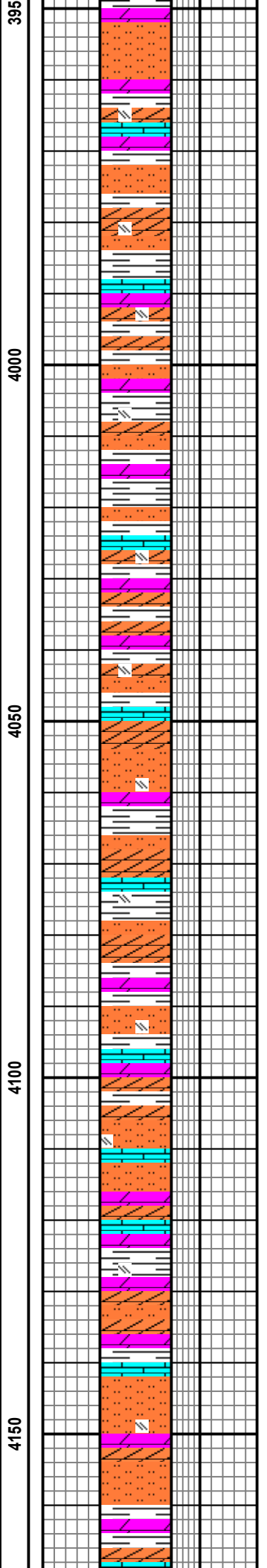
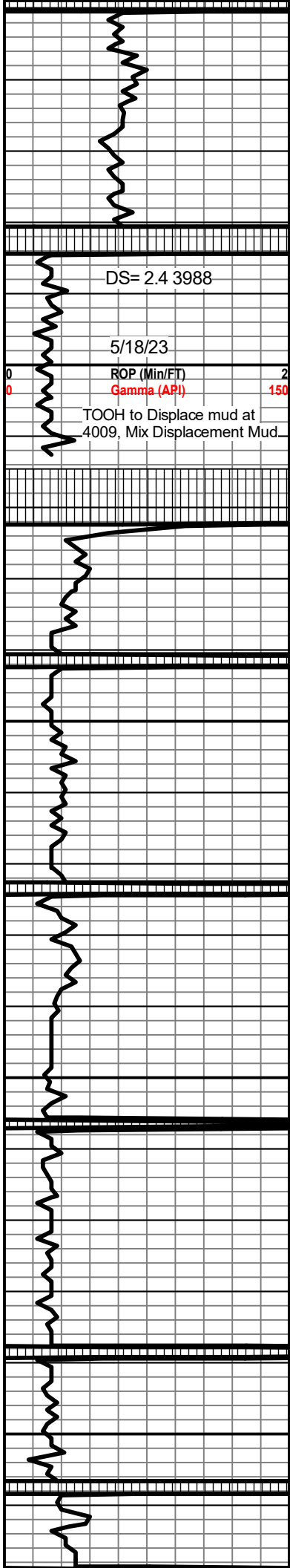
SH org-red sft-firm blkly slty

ANHY mot crm.gy grsn firm

DOL tan xfl firm w/ls/sltst strgs

incr tr cht ltgy ang





SLTST red-org fri anhy w/SH orn sft blk

tr gyp

ANHY gy mot firm blk

intbnd strgs anhy/sh/sltst

SH red-gybrn st blk anhy

LS mgy xfl firm slty

DOL red-pink xfl irm

tr gyp

SLTST org-redrbn fri slcalc anhy mtrx w/tr gyp

SH redbrn-org sft pty slcslc

SLTST aa w/intbd thin strgs LS/DOL

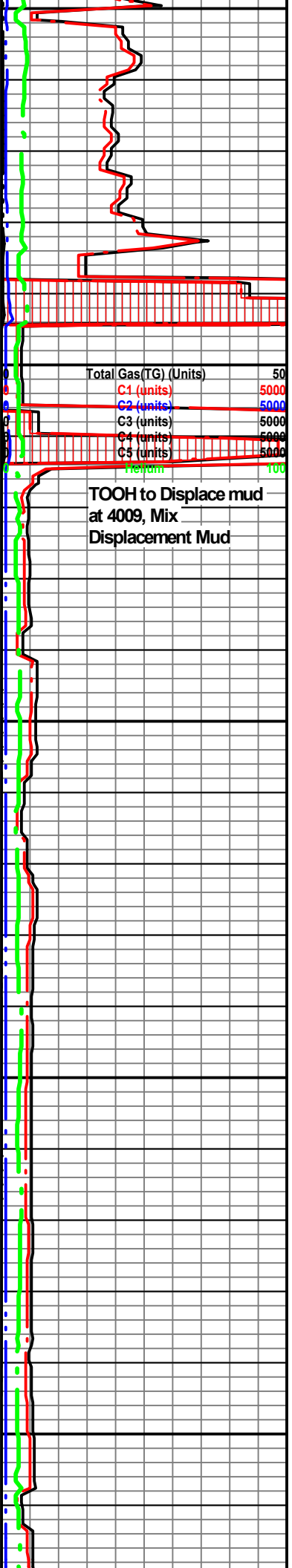
ANHY gy-wh mot firm blk

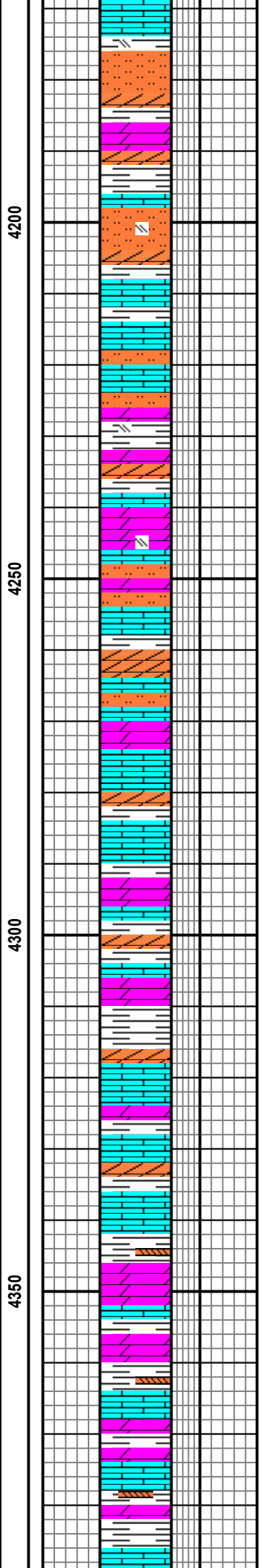
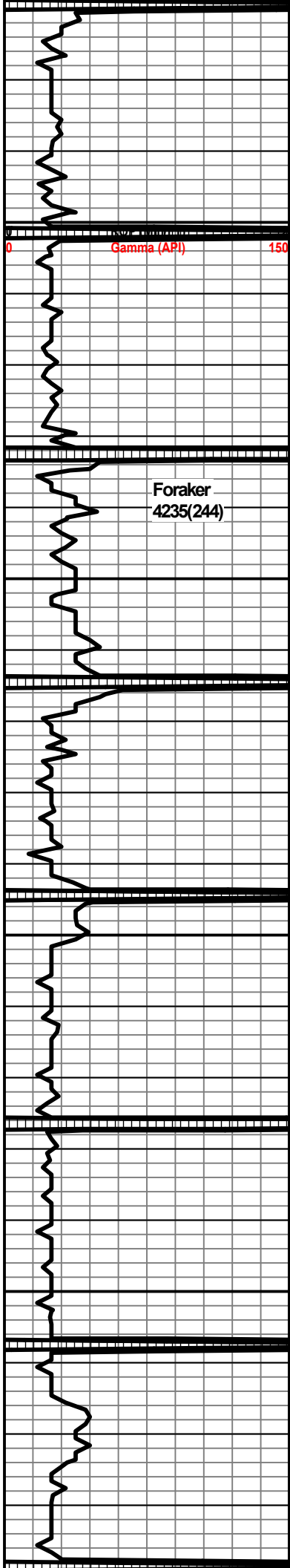
SH org sft pty

intbd anhy/dol/sh

SLTST red-org-occ gy fri arg anhy

tr gyp





SLTST red-ormg-gy fri arg snhy

DOL red-pink xfl firm-hd slty

SLTST redbrn-ormg fri-firm arg anhy

LS tan-ltgy xfl firm hd slty occ anhy

SLTST aa occ gyp

SH aa w/anhy/ls

DOL tan-gy xfl firm slty por-p mnsfoc

SH aa incr varic orm-gy-gygn

ANHY mgy blk firm

LS tan-ltgy xfl firm slpyr w/intbd dol strgs

LS aa occ dolo pyr

ANHY gy firm inc decr amt

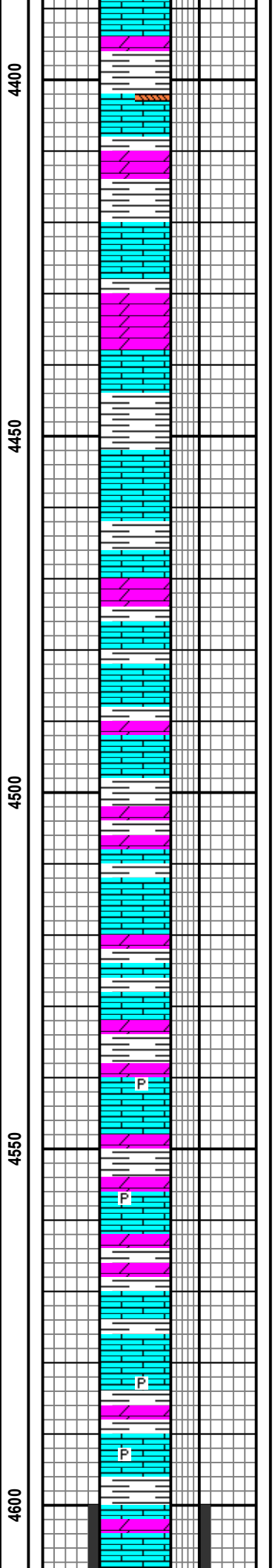
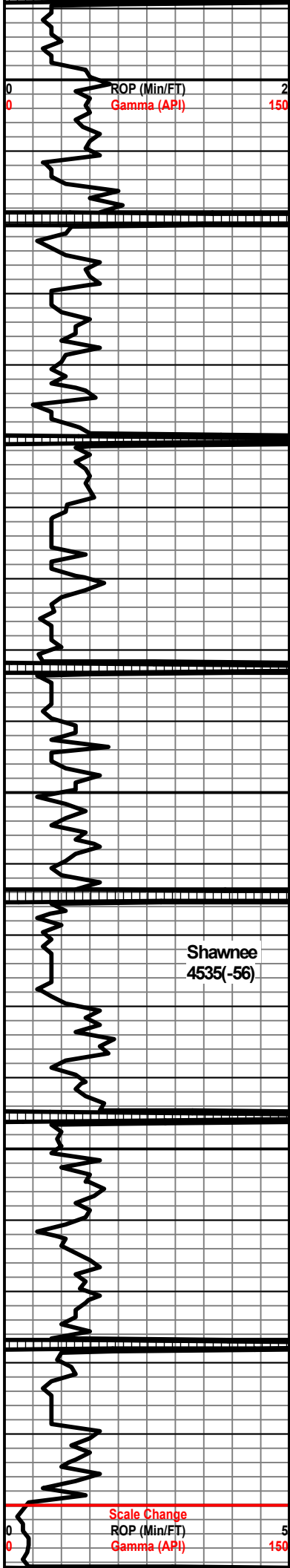
SH mgy firm plty slcalc

LS tan-wh-gy xfl-grn firm slpyr w/intbd anhy & dolo strgs

DOL gy xfl firm occ slty

SH dkgy sft plty slcalc

Total Gas(TG) (Units)	50
C1 (units)	5000
C2 (units)	5000
C3 (units)	5000
C4 (units)	5000
C5 (units)	5000
Helium	100



LS ltgy-tan xfxl-grsn firm sldolo w/inbtbd dolo strgs

SH mgy-gybrn sft plty carb mcalc

DOL tan-gy xfxl firm occ slty

SH aa

LS tan-gy gran-lithov dolo slpyr

DOL ltgy xfl hd dn

LS tan-crm xfxl-grn firm sldolo por-tt nsfoc

DOL strgs & SH dkgy sft plty

LS tan-mgy litho-grsn firm slpyr occ tr fos por-p-tt nsfoc

LS tan-crm xfxl -litho firm occ fos dolo slpyr por-tt nsfoc

LS aa w/occ dolo strgs intbd gy xfxl hd dns slty nsfoc

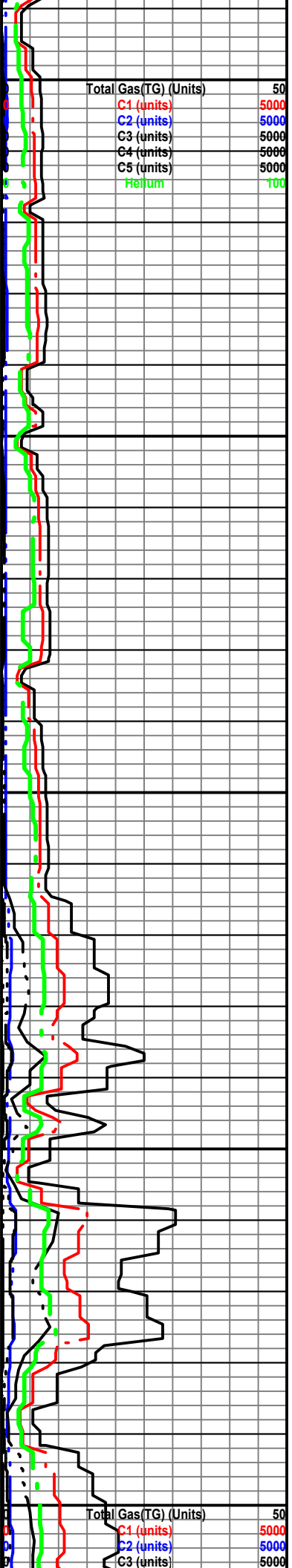
SH dkgy-gybrn sft plty csrb mcalc

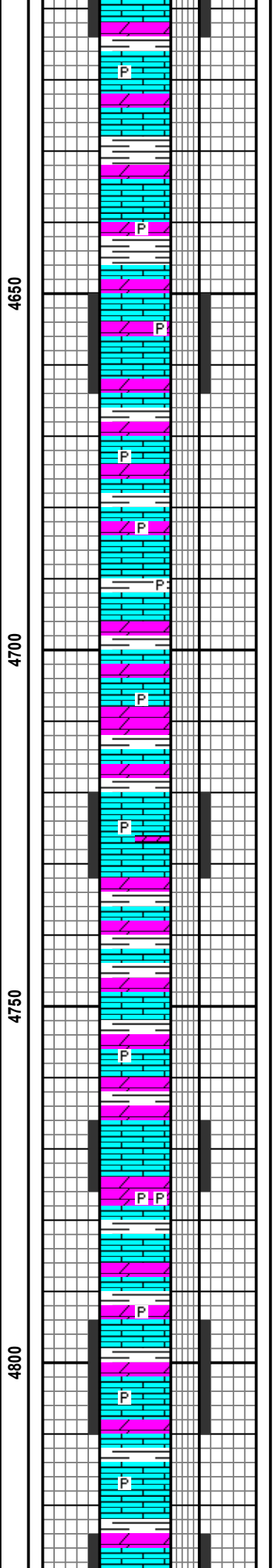
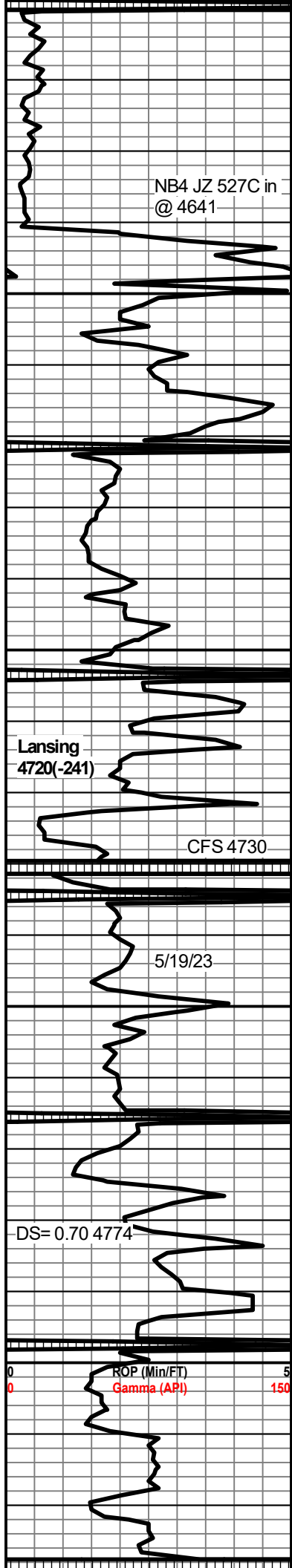
LS a incr tr pyr & dolo L por-p-tt nsfoc

SH gybrn-bk sft-firm blk carb slcalc

Show No.1 4600-4614(14)

LS mot tan-mgy litho gran fri fos dolo chky mtrx slpyr; por-p-fr; oilstn-none; flor-30% ltyel; chut-30%





slow milky cut incr to slow strm when crushed; res-flor res in dish

LS aa incr dolo & occ tr ool vfpvr LS por-p-fr nsfoc

DOL strgs

SH bk-gybrn sft plty vcarb slcalc

Show No.2 4650-4664(14)

LS tan-crm gran-xfxl firm-fri fos w/dolo strgs; por-fr (gran); oilstn-none; flor-20% myel; cut-20% slow milky cruss cut; res-none

DOL gy xfxl hd dn-fri grsn por-p-tt nsfoc w/SH strgs

SH bk-ltgy sft plty carb

LS aa w/DOL tan-gy litho firm por-p-tt nsfoc

tr pyr incr

DOL sa w/SH dkgy plty sft

Show No.3 4720-4732(12)

LS tan-crm xfxl-gran fri-firm suc occ dolo gm text chky; por-fr-g(gran); oilstn-none; flor 10% myel; cut-10% milky slow cut; res-ltyel flor res

DOL ltgy fri gran arg mtrx nsfoc

SH bk-gybrn sft plty vcsrb

tr pyr

LS w/dolo strgs por-p-fr nsfoc

Show No.4 4766-76(10)

LS tan-ltgy xfxl-gran fri fos w/chk mtrx w/dolo strgs; por-p-occ fr; oilstn-none; flor-10% ltyel; cut-10% milky diffuse crush cut; res-none

DOL ltgy-tan gran por-tt nsfoc

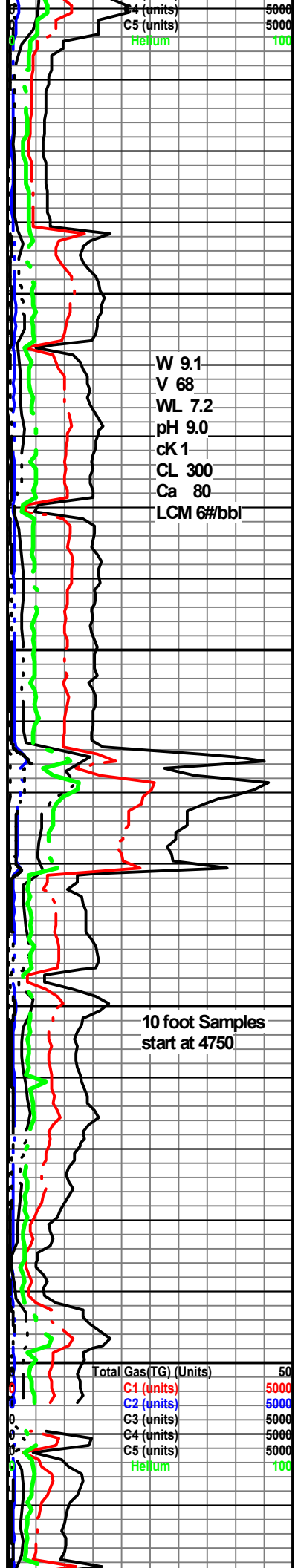
Show No.5 4794-4810(16)

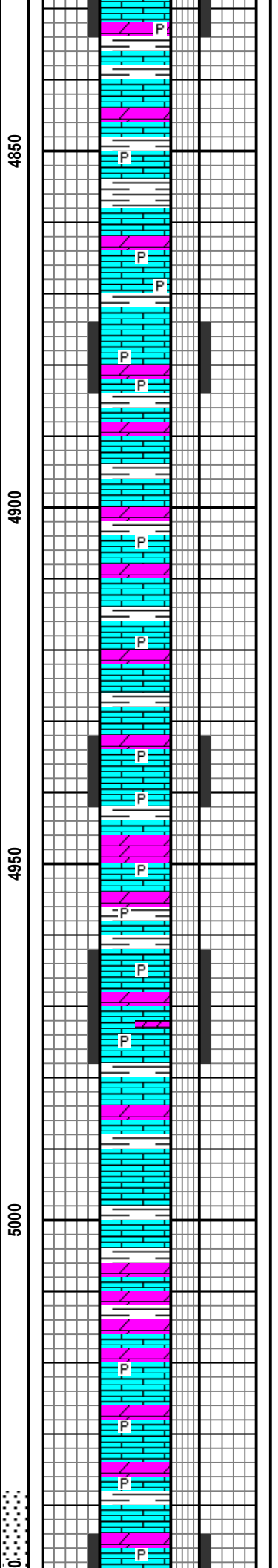
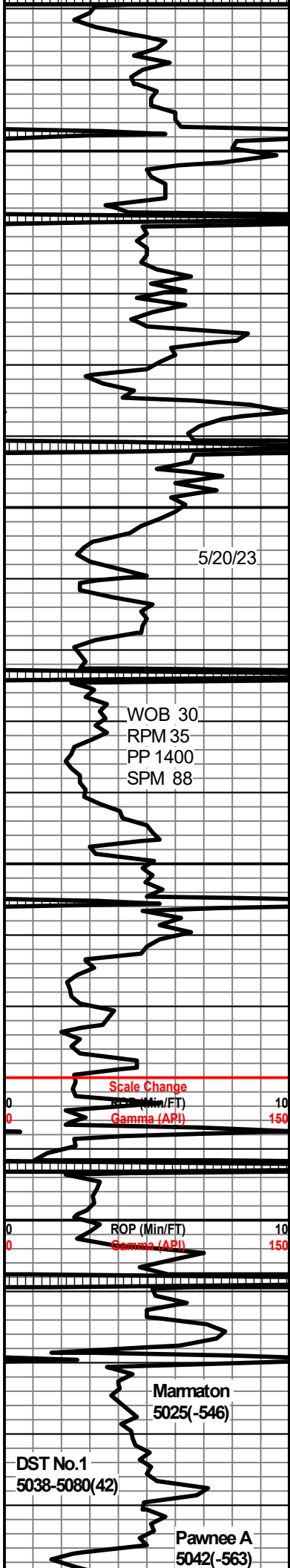
LS mot wh-tan xfxl-grn firm-fri tr ool slpyr dolo; por-p-fr; oilstn-none; flor-10% ltyel; cut-10% milky crush cut; res-none

SH mgy-bk sft plty carb slcalc

Show No.6 4774-4784(10)

LS mot tan-wh xfxl-gran firm-fri chk





mtx sldolo; por-p-fr; oilstn-none;
flor-tr ltyel; cut-tr mky crush cut;
res-none

LS mot tan-mgy gran-litho fri-firm
slpyr dolo strgs por-fr-tt nsfoc

SH bk sft plty vcsrb

LS tan-gy xfxl firm fos gran & dolo
por-tt nsfoc

Show No.7 4874-4884(10)

LS mot tan-mgy xfxl-gran suc firm
slpyr dolo por-fr-g(intergran);
oistn-none; flor-10% myel; cut-10%
mky cut; res-none

LS aa incr suc text slpyr w/intbd
DOL strgs gy por-fr-p nsfoc

tr pyr

SH mgy-bk sft plty vcarb sclac

LS mgy-brn xfxl firm slpyr calc infill
dolo strgs; vf pyr; por-p-tt nsfoc

Show No.8 4932-4942(10)

LS brn-tan xfxl-gran firm-fri calc infill;
dolo; pyr por-p-fr; oilstn-none;
flor-10% ltyel; cut-10% ltyel slow
diffuse cut; res-none

LS tan-gybrn suc-xfxl firm slpyr dolo
por-p-tt nsfoc

Show No.9 4962-4978(16)

LS mot brn/tan-crm xfxl-gran fri-hd dns
mfos vfpvr w/tan microxl hd dns dolo;
por-tt-occ p(intergran); oilstn-none, mod
oil odor in smpl; flor-20% myel; cut-20%
slow mky crush cut-res-none

LS aa xfxl firm-hd dns dolo w/vf
dissem pyr; por-tt nsfoc

LS mot gy-tan gran-litho fri-occ hd
dns dolo slpyr tr fos por-p-tt nsfoc

SH dkggy-gybr sft plty carb

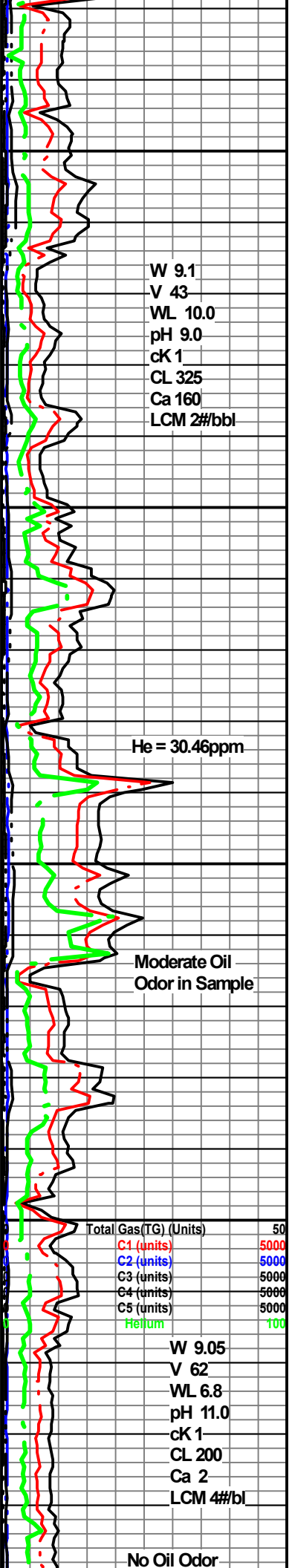
DOL wh-gy microxl hd dns occ slpyr
gran text xfxl por-tt nsfoc

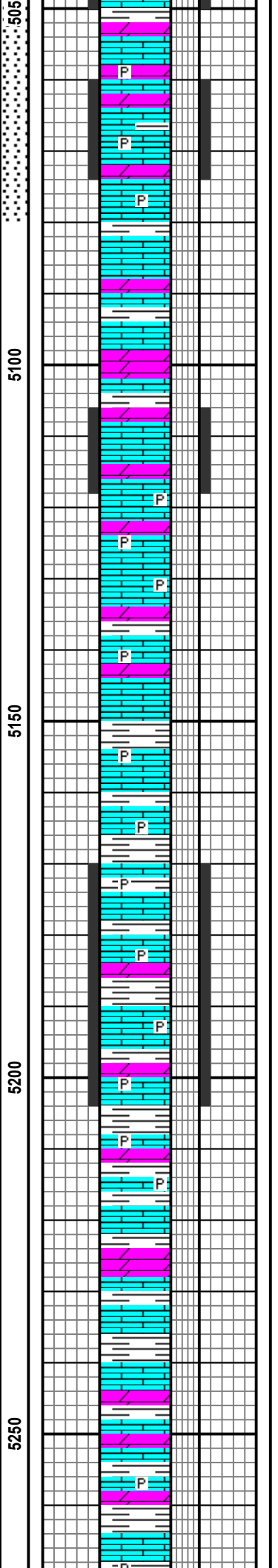
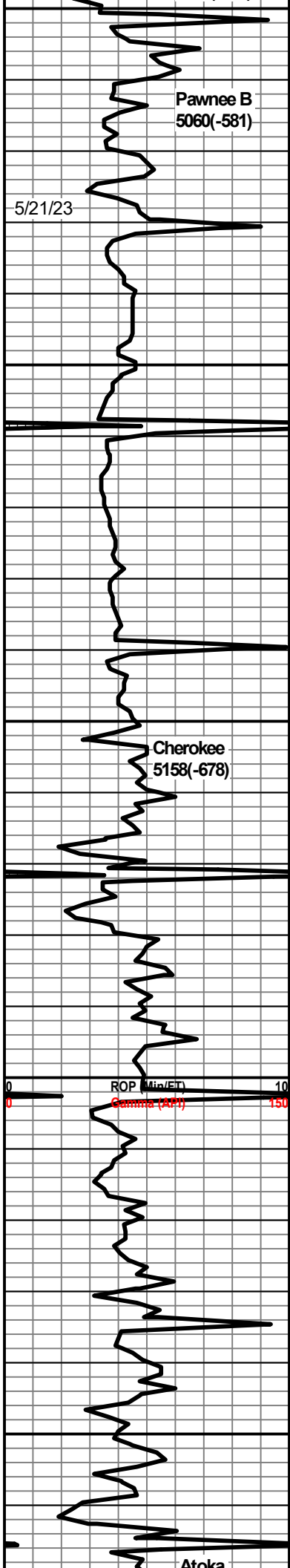
LS tan-crm xfxl-litho occ gran & fri
intbd dolo strg; vfpvr por-tt nsfoc

SH bk-dkggy sft plty csrb

Show No.10 5044-5050(6)

LS mgy/tan-crm xfl-gran & suc
firm-hd-occ fri pyr por-p-tt; oilstn-none; flor
tr ltyel; cut-tr mky diffuse crush cut;





LS tan-crm xfxl-gran fri-firm/hd suc text thin dolo strgs; trpyr;occ fos w/calc infill; por-fr-occ q(intergran); oilstn-tr vis dkbn oilstn on scat ctgs; no live oil; strong sulfur oil odor; flor-30% slow ltyel strm, incr when crushed; res-myel flor res w/vlttan stn in dish

LS mot tan-mgy litho firm pyr w/dolo & sh strgs; LS por-p-tt nsfoc

SH m-dkgy sft pty vcarb

Show No.12 5106-5116(10)

LS tan-crm xfxl hd-firm tr pyr; w/dolo strgs; por-p-tt; oilstn-none; flor-tr ltyel; cut-tr slow mlky diffuse cut; res-none

tr pyr

LS aa w/intbd dolo strgs gy xfxl hd dns stly LS por-p nsfoc

LS mot taan-mgy-wh xfxl-litho firm-fri sfos chk mtrx dolo occ tr pyr; por-p-tt nsfoc

SH bk-dkgy firm blkly w/LS aa por-tt nsfoc

SH bk-dkgy firm blkly-pty vcarb

Show No.13 5170-5204(34)

LS dkgy-tan-brn microxl-litho hd dns dolo vfpyr tr cht; por-tt; oilstn-none; flor tr pal yel; cut-slow mlky diffuse halo cut(sh cuts vweak mlky); res-none

SH aa inc carb slcalc vfpyr

LS bk-mgy xfxl-litho hd dns pyr dolo por-tt shows aa

SH bk-dkbrn frim blkly csrb

LS aa incr pyr dolo w/intbd dolo strgs mfos w/calc infill; LS por-p-tt nsfoc

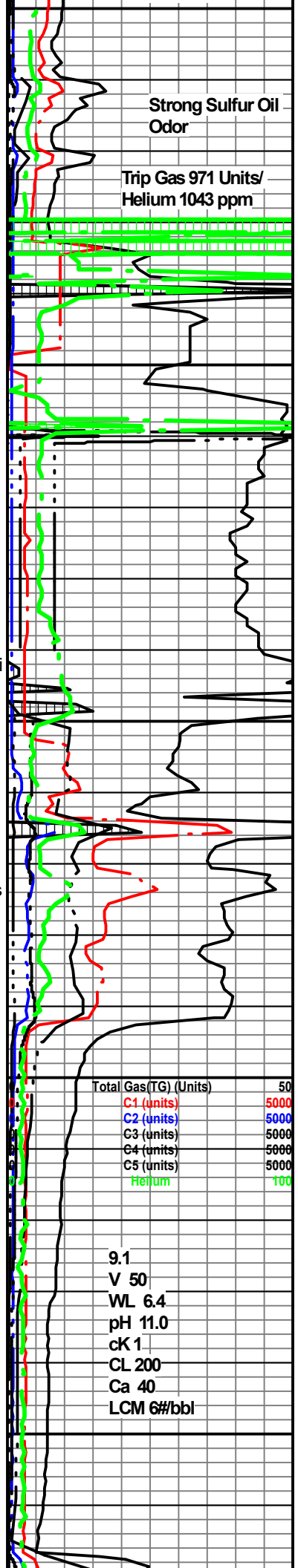
SH bk-gybrn blkly-pty incr tr pyr

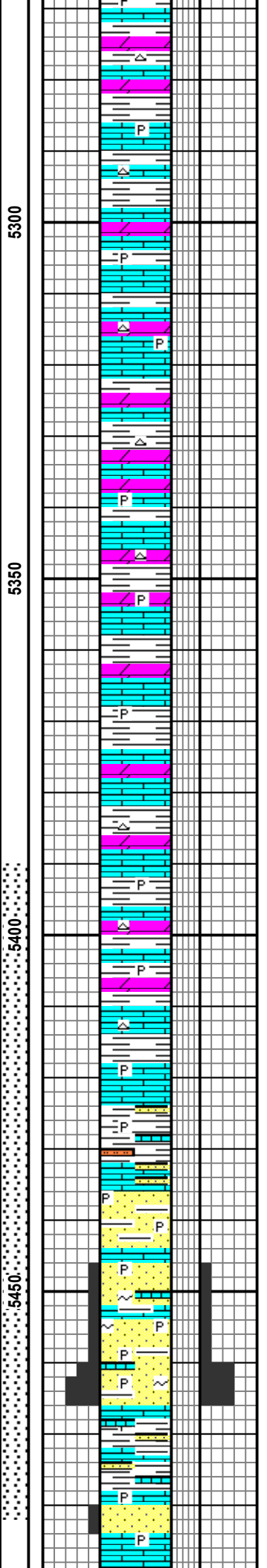
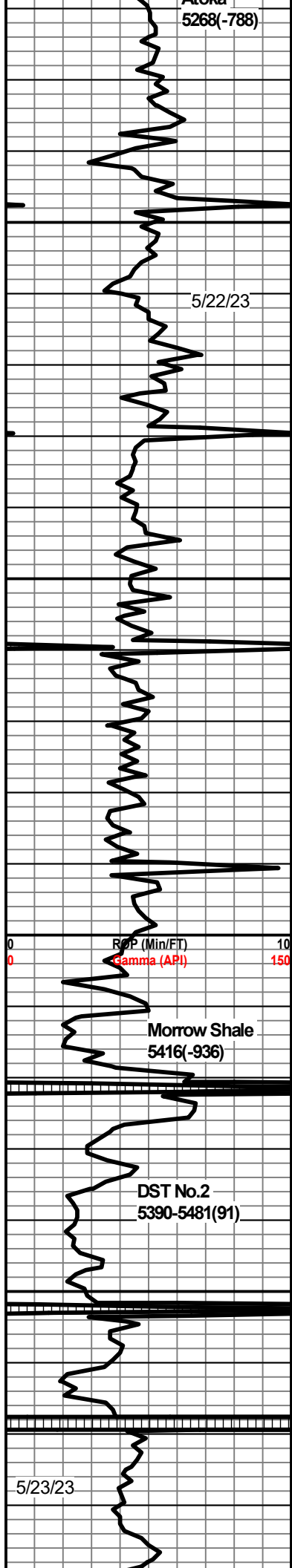
LS mgy-wh xfxl firm fos chky vfpyr dolo LS por-tt nsfoc

SH m-dkgy firm pty vcarb pyr

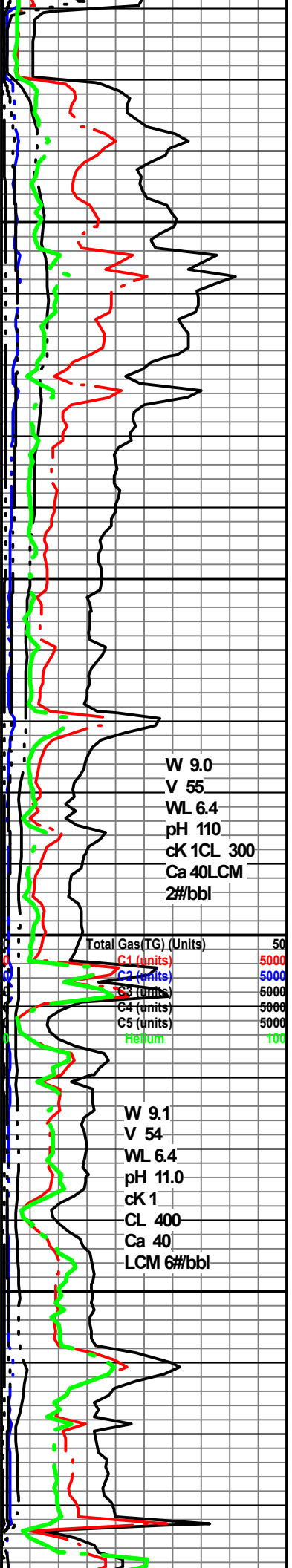
tr pyr & cht

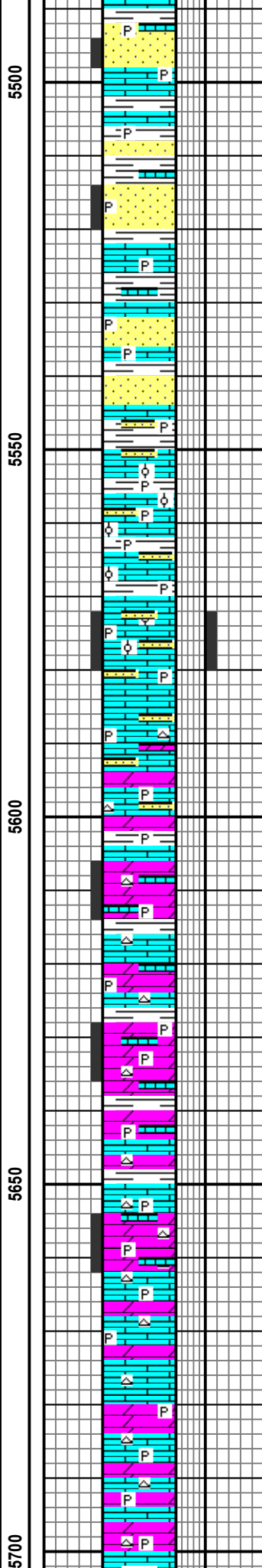
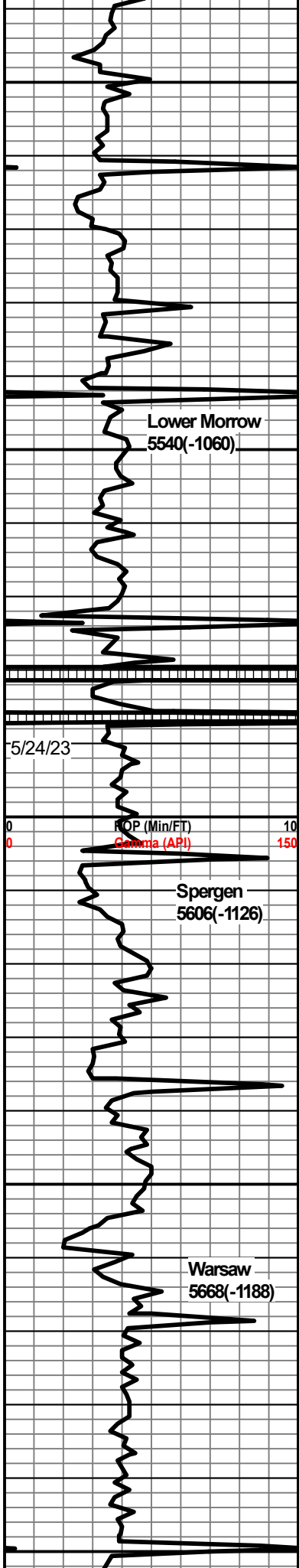
LS tan-brn xfl-litho firm-hd mfos vfpyr w/incr smy cht; LS por-tt nsfoc





LS aa nsfoc
 DOL ltgy xfxl firm-hd
 SH bk-mgy firm blkyy vvcarb slty
 LS aa incr chty w/hd dns dolo strgs bk sh; nsfoc
 SH bk-mgy firm blkyy-pty vvcarb
 LS aa w/DOL tsn xfxl hfd dns LS por-p-tt nsfoc
 LS m-dkgy xfxl firm mfos chky vpyr w/DOL strgs LS por-tt nsfoc
 SH aa
 LS mot dk-mgy litho-xfi firm-hd dns dolo w/intbd DOL strgs tr cht; LS por-tt nsfoc
 tr cht
 LS m-dkgy firm microxl-xfi vpyr tr cht dolo LS por-tt nsfoc
 SH gybrn-bk blkyy firm vvcarb
 SH dk-mgy-bk sft-firm pty vvcarb w/incr abnt hd dns pyr
 LS aa w/intbd dol & sh strgs
 LS m-dkgy-tnn xfxl firm-hd vpyr vcarb slcalc
 SH bk-dkgy/mgy firm-sft pty vcarb dolo hd dns w/LS strgs
 SH gybrn-dkgy sft blkyy vcarb occ sltst dkgy fri & dolo
 LS aa vpyr w/SH dkgy-gybrn firm blkyy vcarb pyr
 SH mot gygn-dkgy sft-firm pty vcarb w/sltst & tr vfg slty ss clus; ls and xfxl; nsfoc; tr qtz grs
 SS wh-ltgy vfg-occ fg hd-firm(silcmt)-fri vfg clus; arg mtrix; sh prtx; por-tt-occ fr (fri clus); oilstrn-none; nsfoc
 SS wh-ltgy fg-tr mg fri-firm sbrd mwsrt; decr amt silcmt incr in vf dissep pyr; vthin ls/sh strgs; por-fr-occ g(dnr clus); oilstrn-none; flor-10% ltely; cut-10% mlky slow diffuse; res-none
 SS [5460-5466] clr-wh f-occ mg fri-firm sbrd wsr lselly cmted; dln mtrix; vf dissep pyr; tr glau; strgs ls/sh intbd; por-g(dln)-fr; oilstrn-20% live tan oil, 10% brn oil ctgs; flor-30% dull gold-myel; cut-30% immed slow myel cut-res-myel flor, tan oil ring in dish
 LS/SH strgs intbd tan-gy xfxl firm pyr w/decr SS as f-mg strgs por-p-occ tt.tr pyr & glau; decr amt show; oilstrn-none; flor-10% ltely; cut-10% slow mlky cut-res-pale floe res
 SS clr-wh f-mg firm sbang msrt; silcmt arg mtrix; thin strgs; w/intbd ls; por-p; nsfoc





SS strgs wh f-vfg w/occ mg firm silcmt arg mtrx; carb incl; sh prtgs; por-p-tt nsfoc; w/LS tan-gy xfl firm vfpvr

SH gybrn-dkgy firm blk carb calc w/thin SS trgs & /LS gy

SS wh-ltgy firm fg sbrd wsrt; silcmt; pyr arg; por-tt nsfoc

SH bk-gybrn firm blk carb w/LS brn-mgy xfl firm pyr

SS wh-ltgy f-mg firm-hd clus sbrd wsrt silcmt; carb sh prtgs; occ pyr w/sh strgs; por-p-tt nsfoc

SH aa vcarb dkgy pyr

LS crm-tan xfl-litho hd dns-firm chky-calc incr fos oolitic; slpyr w/dkgy sh strgs; LS por-tt nsfoc

Show No.15 5572-5580(8)

LS crm-mot tan/crm xfl firm-fri vfos & ool w/calc infill; slpyr glau SS intbd sdy ls & fg ss; por-p-occ fr(intergran); oilstn-none; flor-10% ltyel; cut-10% slow mlky diffuse cut, incr when ctgs are crushed, no live oilstn

LS mot tan-mgy-crm xfl-gran firm-occ hd dns-fri & sdy w/intbd thin SS strgs vfg fri glau pyr w/thin dolo strgs incr; LS por-p-tt ls is reworked nsfoc no oilstn

SH dkgy hd blk pyr caslc

tr cht ltgy-wh ang

DOL tan-mgy/dkgy gran suc-xfl vhd dns-occ fri(suc); w/ls strgs; pyr occ tr cht; w/bk sh strgs; LS por-vt-occ p(gran dol); oilstn-none; nsfoc

incr amt cht mlky vang

DOL tan-brn-mot crm/tan hd-firm gran suc w/arg mtrx incr pyr w/thin strgs ls & sh; DOL por-tt-occ p oilstn-none; nsfoc

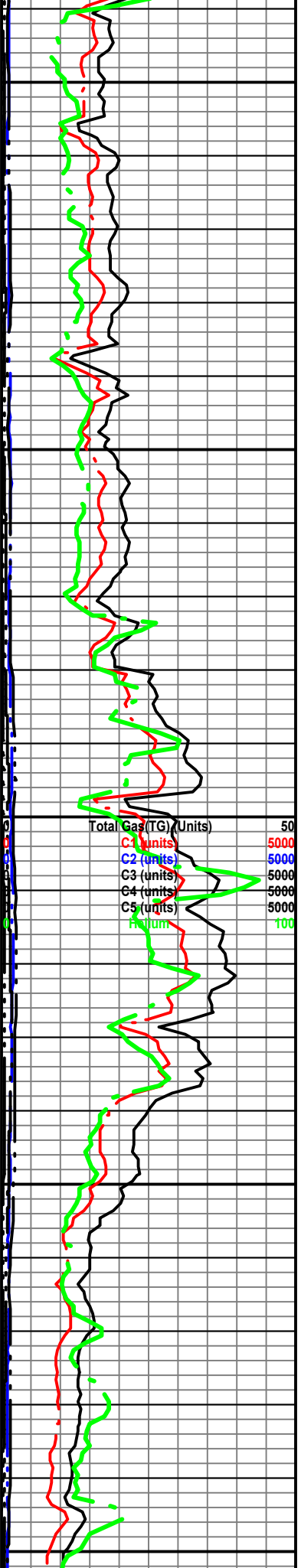
DOL mot tan-crm/brn xfl-gran & suc arg mtrx incr pyr tr mlky cht; w/LS tan microxl hd dns; DOL por-tt-occ fr(suc) oilstn-none; nsfoc

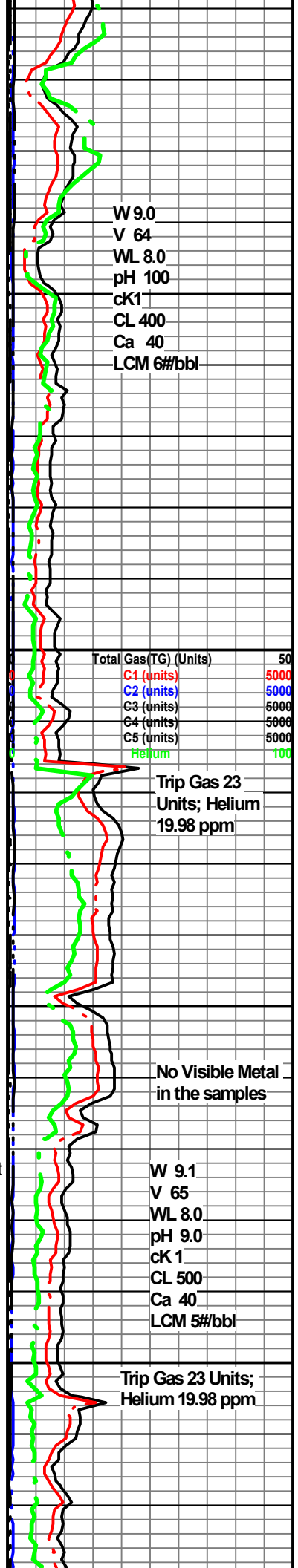
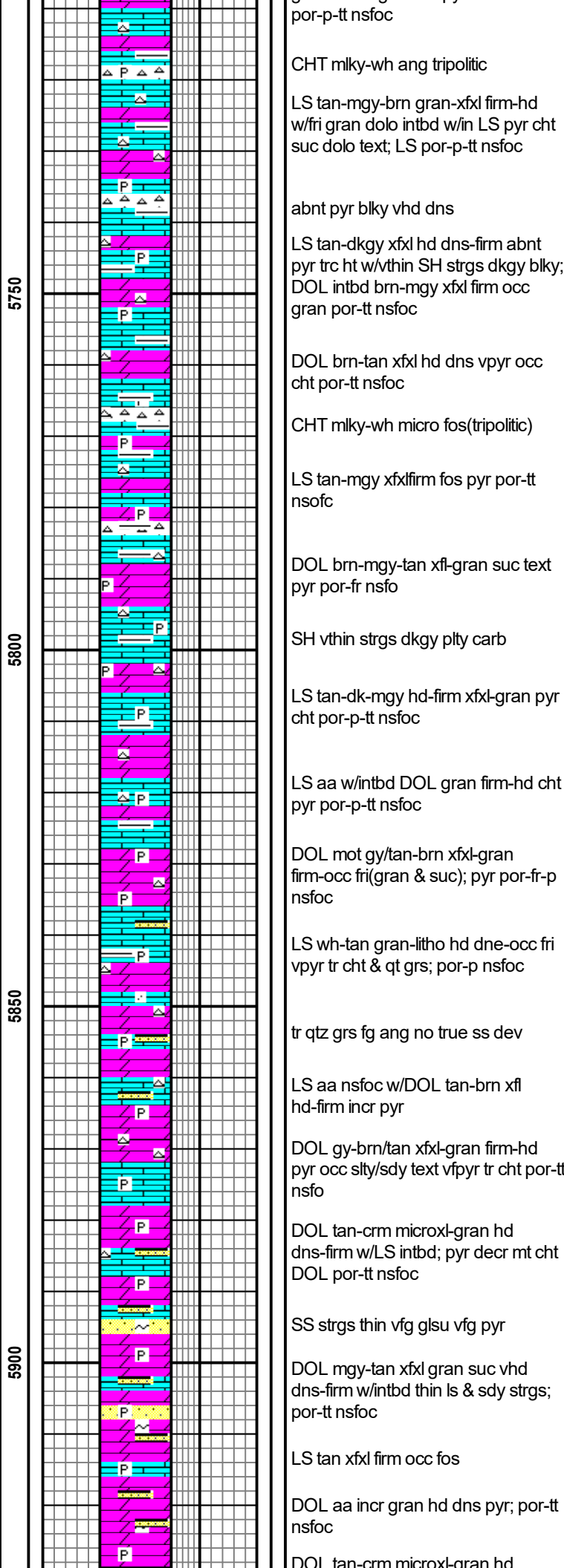
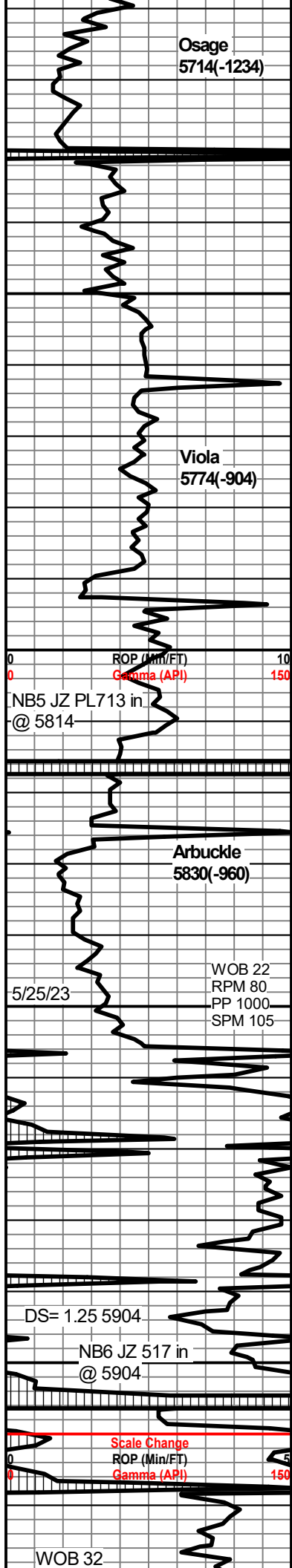
LS tan-gy xfl-litho firm-fri occ hd dn w/intbd dolo strgs wh cht tr pyr; occ fos LS por-tt ndfo

incr tr wh-gy cht vang

LS aa incr microxl hd dns pyr w/intbd DOL brn-tan xfl-gran firm por-p intergran nsfoc

DOL mot brn-gy xfl frim-hd occ gran firm arg mtrx vfpvr tr cht





RPM 75
PP 1200
SPM 95

Reagan Sand
5956(-1476)

ROP (Min/FT)
Gamma (API)

5/26/23

Total Depth(Driller) 6076(-1596)

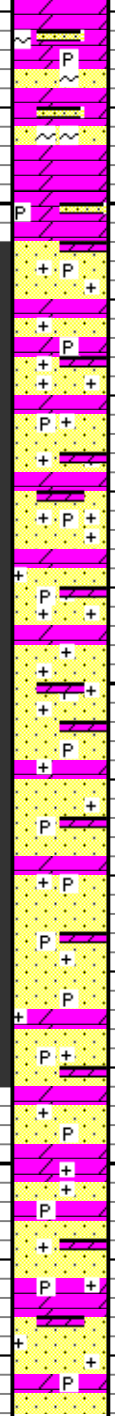
5950

6000

6050

6100

0



DOL tan-ltgy gran-xfxl hd dns-firm glau
w/sdy strgs por-p-tt nsfoc

DOL tan-ltgy gran-xfxl hd dns-firm
gran suc text pyr occ glau por-tt
nsfoc

SS clr-wh-pink(felds) hd dns-firm
m-cg vang psrt feldspathic
quartzose tr bio mica por-p-tt nsfoc

SS pink/orng-wh-clr clus w/uncon
qtz grs m-fg ang-sbang
feldspathic/quartzose pyr mica(bio)
por-p-occ fr(f-mg clus); nsfoc

SS incr ss clus f-mg quartzose/felds
SS; ang-sbang clus; bio mica pyr;
intbnd dolo; SS clus fg-mg
por-fr-occ g(dner clus); nsfoc

abnt pyr ang hd dns

Arkose SS hd dns-firm clus & occ
uncon grs pink-orng-clr/wh f-mg
vcg sbang psrt; bio mica; w/brn-tan
dolo trgs; pyr; por-p-tt w/occ fr clus;
nsfoc

incr abnt pyr hd dns

SS arkosic-quartzose pink/orng-clr
f-mg occ vcg ang psrt; felds; bio
mica; w/incr in intbd dolo brn-gy xfxl
gran hd dns; SS por-tt nsfo

SS arkosic f-vfg-occ vcg psrt ang
felds (pink/orng); bio mica; abnt pyr;
incr smt DOL hd dn gran xfxl pyr;
SS por-tt nsfo

TG 16 U; He
23.23 ppm

He 30.97 ppm @6004

Total Gas(TG) (Units)	50
C1 (units)	5000
C2 (units)	5000
C3 (units)	5000
C4 (units)	5000
C5 (units)	5000
Helium	100

TG 15U; He 13.32

