





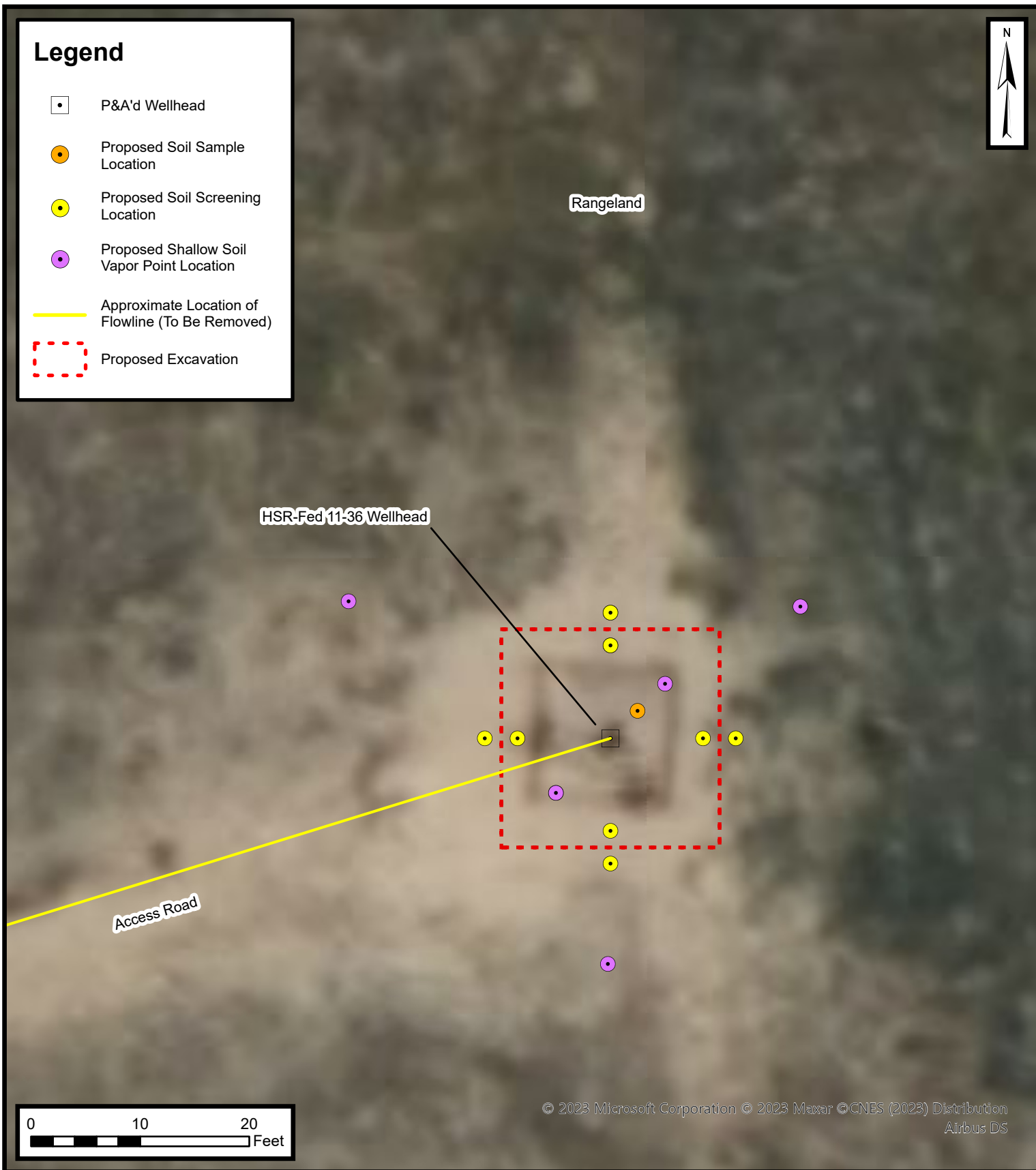


Legend

-  P&A'd Wellhead
-  Proposed Soil Sample Location
-  Proposed Soil Screening Location
-  Proposed Shallow Soil Vapor Point Location
-  Approximate Location of Flowline (To Be Removed)
-  Proposed Excavation



© 2023 Microsoft Corporation © 2023 Maxar © CNES (2023) Distribution
Airbus DS

Proposed Wellhead Excavation and Soil Sampling Locations Map

HSR-Fed 11-36 Wellhead
Kerr-McGee Oil & Gas Onshore, LP
NESW SEC 36-T3N-R66W
Weld County, CO
Project Number: 09A1417382