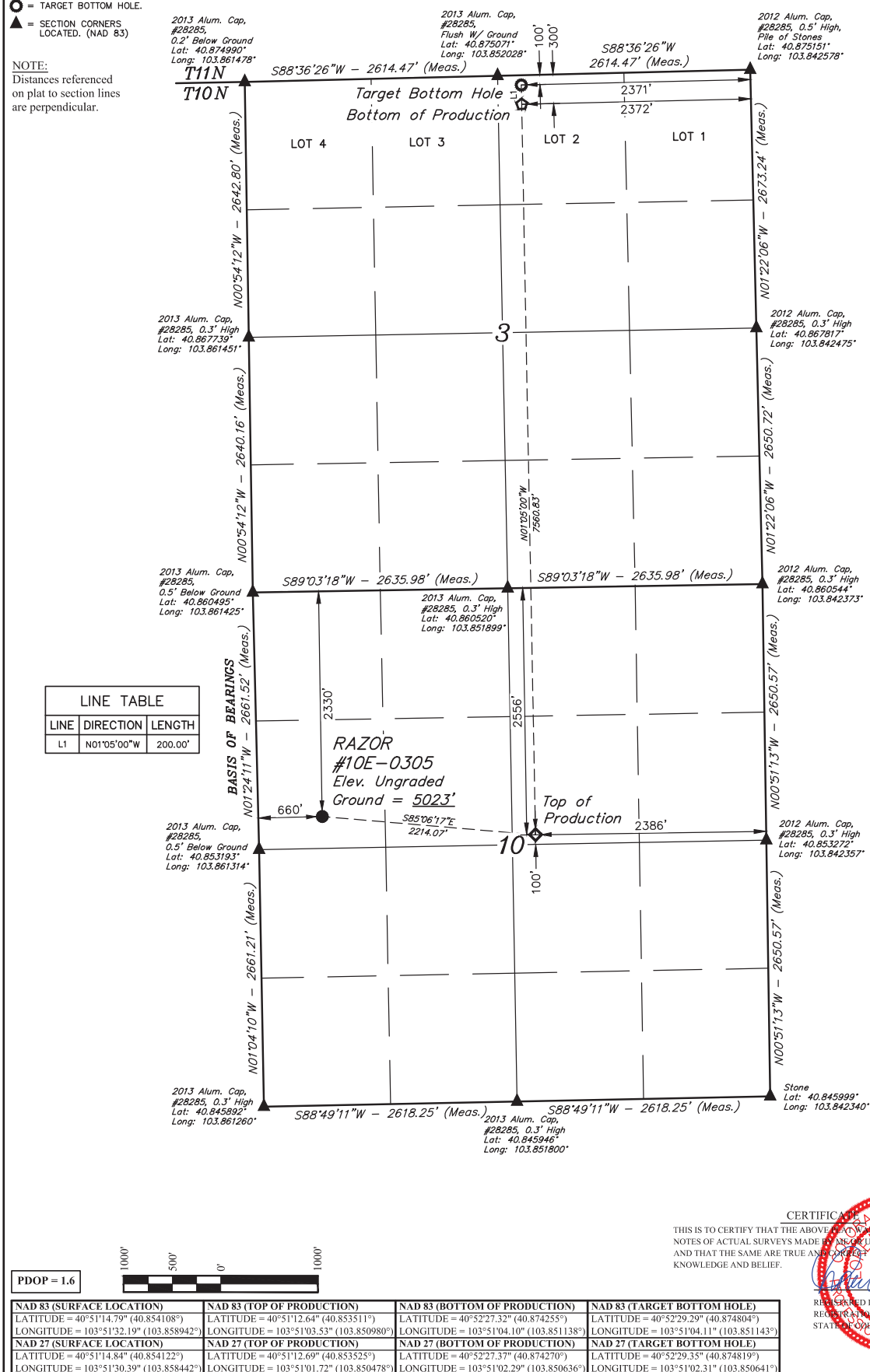


T10N, R58W, 6th P.M.

- NOTE:**
Distances referenced
on plat to section lines
are perpendicular.



CERTIFICATE

THIS IS TO CERTIFY THAT THE ABOVE MAP WAS PREPARED FROM FIELD NOTES OF ACTUAL SURVEYS MADE BY ME OR UNDER MY SUPERVISION, AND THAT THE SAME ARE TRUE AND CORRECT TO THE BEST OF MY KNOWLEDGE AND BELIEF.

CERTIFICATE

THE ABOVE PLAT WAS PREPARED FROM FIELD
EYES MADE BY ME OR UNDER MY SUPERVISION
AND IS TRUE AND CORRECT TO THE BEST OF MY
KNOWLEDGE.


Robert J. Boudry

REGISTERED LAND SURVEYOR
REGISTRATION NO. 28285
STATE OF COLORADO

82-27-23

BASIS OF ELEVATION

SPOT ELEVATION LOCATED AT THE NORTHEAST CORNER OF SECTION 15,
T9N, R55W, 6th P.M. TAKEN FROM THE GAILOOK SPRING QUADRANGLE,
COLORADO, WELD COUNTY, 7.5 MINUTE QUAD (TOPOGRAPHIC MAP)
PUBLISHED BY THE UNITED STATES DEPARTMENT OF THE INTERIOR,
GEOLOGICAL SURVEY. SAID ELEVATION IS MARKED AS BEING 4679 FEET



UEL'S, LLC
Corporate Office * 85 South 200 East
Vernal, UT 84078 * (435) 789-1017

FUNDARE RESOURCES OPERATING COMPANY, LLC

RAZOR #10E-0305
SW 1/4 NW 1/4, SECTION 10, T10N, R58W, 6th P.M.
WELD COUNTY, COLORADO

SURVEYED BY	DALLAS NIELSEN, G.W.	05-17-13	SCALE
DRAWN BY	P.M.	02-27-23	1" = 1000'

WELL LOCATION PLAT