

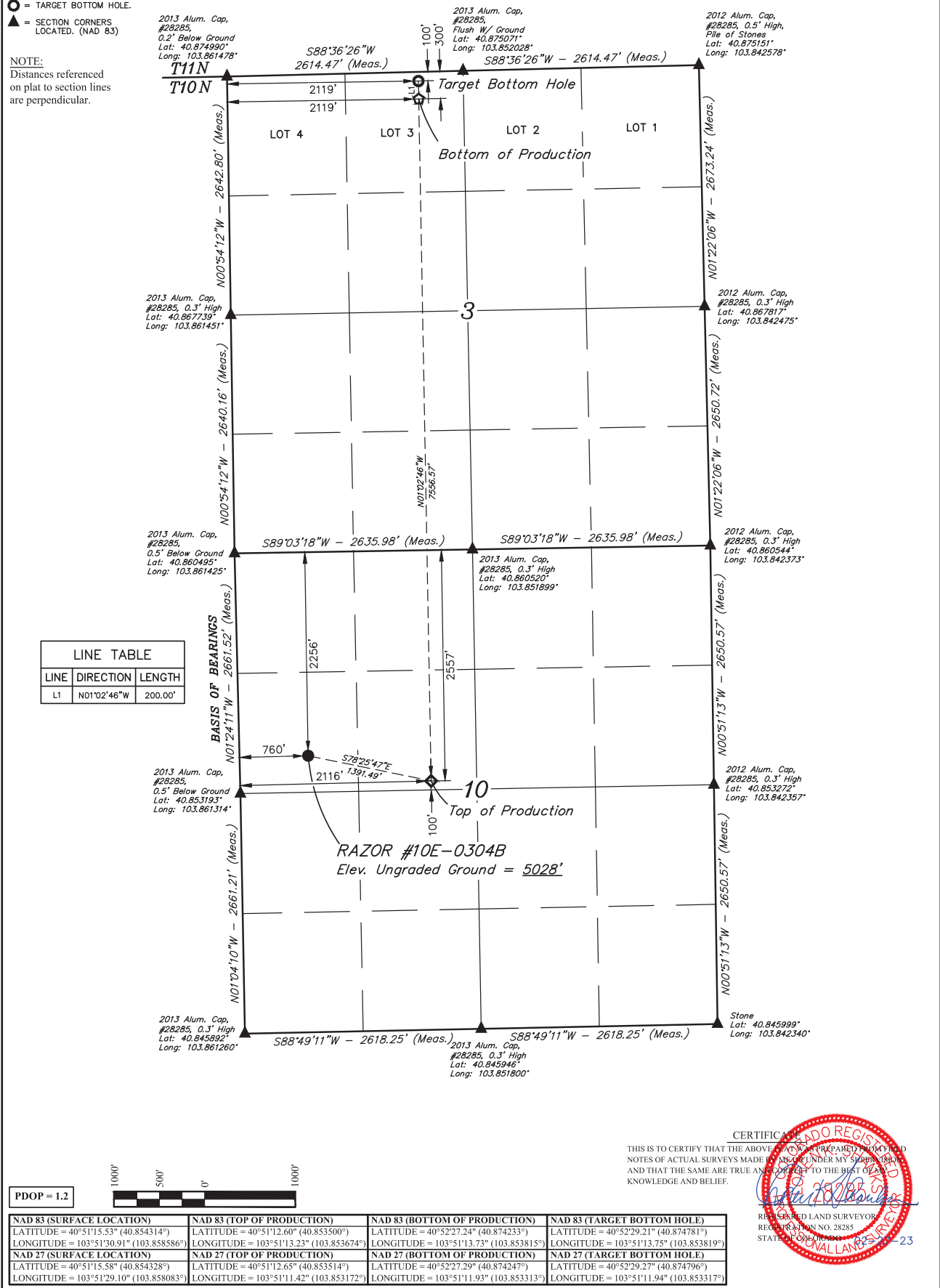
LEGEND:

- = PROPOSED WELLHEAD.
- ◆ = TOP OF PRODUCTION.
- ◊ = BOTTOM OF PRODUCTION.
- = TARGET BOTTOM HOLE.
- ▲ = SECTION CORNERS LOCATED. (NAD 83)

NOTE:
Distances referenced
on plat to section lines
are perpendicular.

T10N, R58W, 6th P.M.

LINE TABLE		
LINE	DIRECTION	LENGTH
L1	N01°02'46"W	200.00'



NAD 83 (SURFACE LOCATION)	NAD 83 (TOP OF PRODUCTION)	NAD 83 (BOTTOM OF PRODUCTION)	NAD 83 (TARGET BOTTOM HOLE)
LATITUDE = 40°51'15.53" (40.854314°)	LATITUDE = 40°51'12.60" (40.853500°)	LATITUDE = 40°52'27.24" (40.874233°)	LATITUDE = 40°52'29.21" (40.874781°)
LONGITUDE = 103°51'30.91" (103.858586°)	LONGITUDE = 103°51'13.23" (103.853674°)	LONGITUDE = 103°51'13.73" (103.853815°)	LONGITUDE = 103°51'13.75" (103.853819°)
NAD 27 (SURFACE LOCATION)	NAD 27 (TOP OF PRODUCTION)	NAD 27 (BOTTOM OF PRODUCTION)	NAD 27 (TARGET BOTTOM HOLE)
LATITUDE = 40°51'15.58" (40.854328°)	LATITUDE = 40°51'12.65" (40.853514°)	LATITUDE = 40°52'27.29" (40.874247°)	LATITUDE = 40°52'29.27" (40.874796°)
LONGITUDE = 103°51'29.10" (103.858083°)	LONGITUDE = 103°51'11.42" (103.853172°)	LONGITUDE = 103°51'11.93" (103.853313°)	LONGITUDE = 103°51'11.94" (103.853317°)

SPOT ELEVATION LOCATED AT THE NORTHEAST CORNER OF SECTION 15, T9N, R58W, 6th P.M. TAKEN FROM THE GATEHOOK SPRING, QUADRANGLE, COLORADO, WELD COUNTY, 7.5 MINUTE QUAD (TOPOGRAPHIC MAP) PUBLISHED BY THE UNITED STATES DEPARTMENT OF THE INTERIOR, GEOLOGICAL SURVEY. SAID ELEVATION IS MARKED AS BEING 4679 FEET

UELS, LLC
Corporate Office * 85 South 200 East
Vernal, UT 84078 * (435) 789-1017

FUNDARE RESOURCES OPERATING COMPANY, LLC

RAZOR #10E-0304B
SW 1/4 NW 1/4, SECTION 10, T10N, R58W, 6th P.M.
WELD COUNTY, COLORADO

SURVEYED BY	DALLAS NIELSEN, G.W.	05-17-13	SCALE
DRAWN BY	P.M.	02-27-23	1" = 1000'

WELL LOCATION PLAT

CERTIFICATION
THIS IS TO CERTIFY THAT THE ABOVE PLAT WAS PREPARED FROM THE
NOTES OF ACTUAL SURVEYS MADE BY ME OR UNDER MY SUPERVISION
AND THAT THE SAME ARE TRUE AND CORRECT TO THE BEST OF MY
KNOWLEDGE AND BELIEF.

REGISTERED LAND SURVEYOR
REGISTRATION NO. 28285
STATE OF COLORADO
JULY 18, 2023