

# **FUNDARE RESOURCES OPERATING COMPANY, LLC**

**WELD COUNTY  
SEC 10-T10N-R58W  
RAZOR 10E-0303A**

**OWB**

**Plan: PROPOSAL 1**

## **Standard Planning Report**

**30 April, 2023**

Project: WELD COUNTY  
Site: SEC 10-T10N-R58W  
Well: RAZOR 10E-0303A  
Wellbore: OWB  
Design: PROPOSAL 1

PROJECT DETAILS: WELD COUNTY  
Geodetic System: US State Plane 1983  
Datum: North American Datum 1983  
Ellipsoid: GRS 1980  
Zone: Colorado Northern Zone  
System Datum: Mean Sea Level



Azimuths to True North  
Magnetic North: 7.21°  
Magnetic Field  
Strength: 52080.4nT  
Dip Angle: 67.06°  
Date: 4/29/2023  
Model: IGRF2020

WELL DETAILS: RAZOR 10E-0303A

+N/-S	+E/-W	Northing	Easting	Latitude	Longitude	Slot
0.00	0.00	1558277.48	3454027.91	40.854314°N	103.858706°W	

FORMATION TOP DETAILS

No formation data is available

SECTION DETAILS

Sec	MD	Inc	Azi	TVD	+N/-S	+E/-W	Dleg	TFace	VSect	Target
1	0.00	0.00	0.00	0.00	0.00	0.00	0.00	0.00	0.00	
2	600.00	0.00	0.00	600.00	0.00	0.00	0.00	0.00	0.00	
3	1222.03	12.44	146.67	1217.16	-56.20	36.96	2.00	146.67	-52.99	
4	5714.83	12.44	146.67	5604.46	-864.84	568.83	0.00	0.00	-815.40	
5	6718.83	90.00	359.74	6276.00	-300.93	647.08	10.00	-146.30	-246.98	LP-RAZOR 10E-0303A
6	14268.88	90.00	359.74	6276.00	7249.04	612.31	0.00	0.00	7274.84	BPZ-RAZOR 10E-0303A
7	14270.10	90.00	359.76	6276.00	7250.26	612.30	2.00	90.00	7276.05	PBHL-RAZOR 10E-0303A
8	14468.55	90.00	359.76	6276.00	7448.70	611.47	0.00	0.00	7473.76	PBHL-RAZOR 10E-0303A

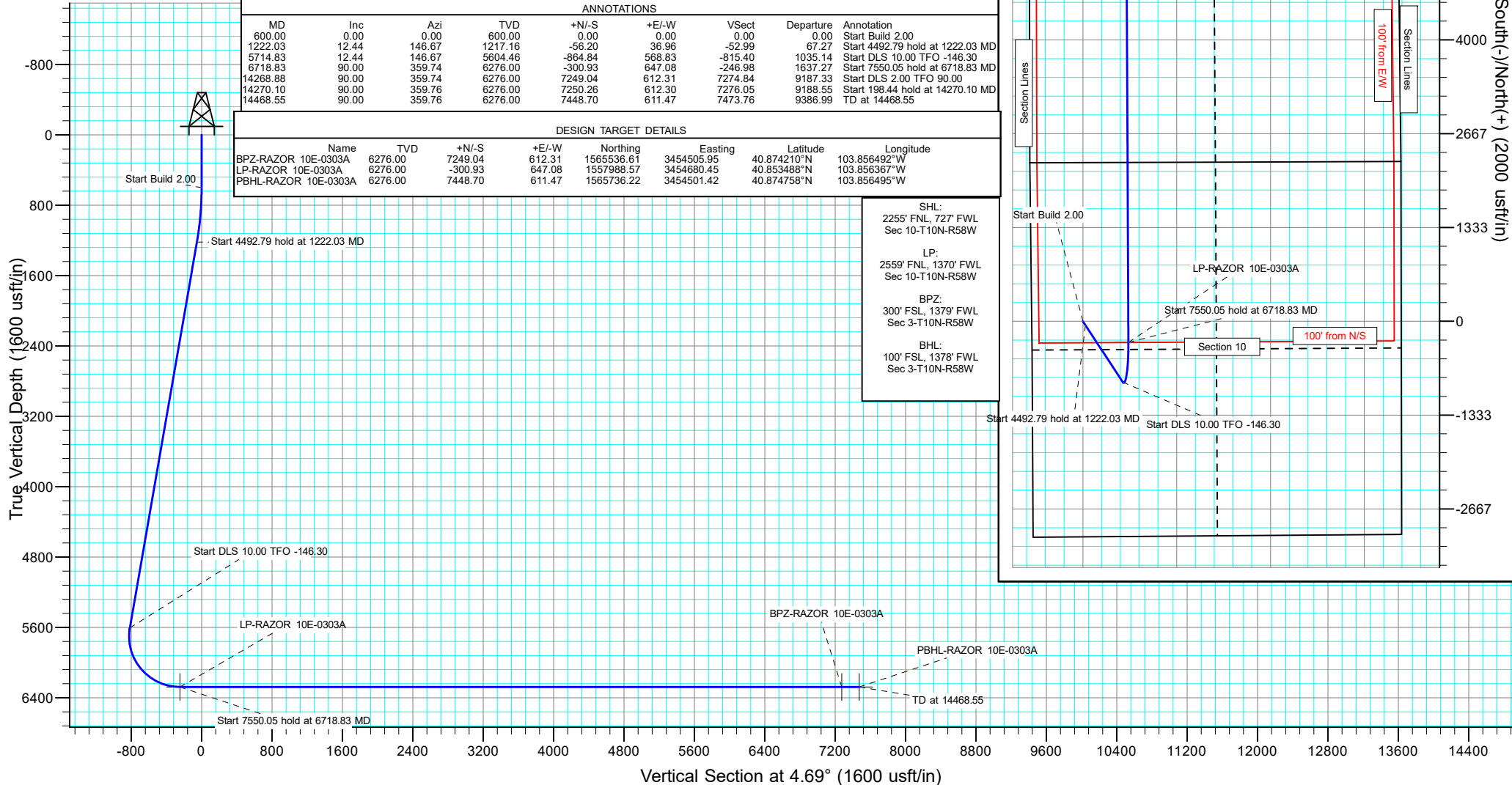
ANNOTATIONS

MD	Inc	Azi	TVD	+N/-S	+E/-W	VSect	Departure	Annotation
600.00	0.00	0.00	600.00	0.00	0.00	0.00	0.00	Start Build 2.00
1222.03	12.44	146.67	1217.16	-56.20	36.96	-52.99	67.27	Start 4492.79 hold at 1222.03 MD
5714.83	12.44	146.67	5604.46	-864.84	568.83	-815.40	1035.14	Start DLS 10.00 TFO -146.30
6718.83	90.00	359.74	6276.00	-300.93	647.08	-246.98	1637.27	Start 7550.05 hold at 6718.83 MD
14268.88	90.00	359.74	6276.00	7249.04	612.31	7274.84	9187.33	Start DLS 2.00 TFO 90.00
14270.10	90.00	359.76	6276.00	7250.26	612.30	7276.05	9188.55	Start 198.44 hold at 14270.10 MD
14468.55	90.00	359.76	6276.00	7448.70	611.47	7473.76	9386.99	TD at 14468.55

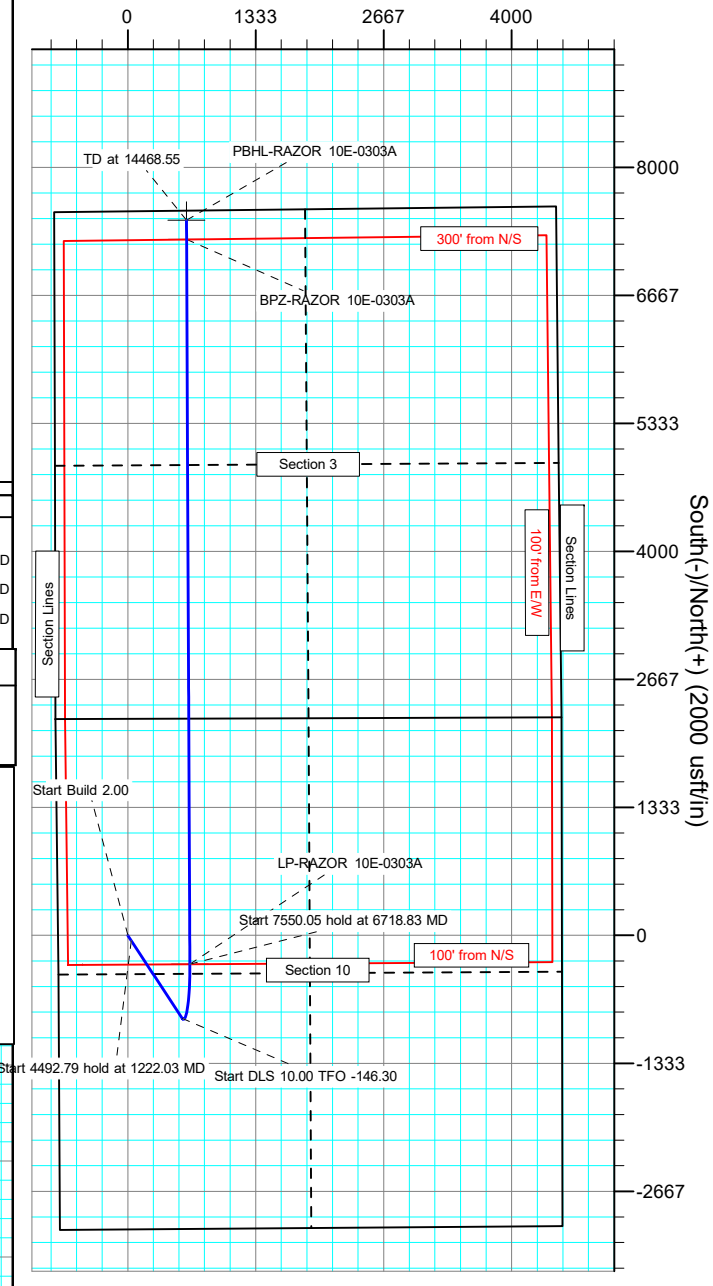
DESIGN TARGET DETAILS

Name	TVD	+N/-S	+E/-W	Northing	Easting	Latitude	Longitude
BPZ-RAZOR 10E-0303A	6276.00	7249.04	612.31	1565536.61	3454505.95	40.874210°N	103.856492°W
LP-RAZOR 10E-0303A	6276.00	-300.93	647.08	1557988.57	3454680.45	40.853488°N	103.856367°W
PBHL-RAZOR 10E-0303A	6276.00	7448.70	611.47	1565736.22	3454501.42	40.874758°N	103.856495°W

SHL:  
2255' FNL, 727' FWL  
Sec 10-T10N-R58W  
LP:  
2559' FNL, 1370' FWL  
Sec 10-T10N-R58W  
BPZ:  
300' FSL, 1379' FWL  
Sec 3-T10N-R58W  
BHL:  
100' FSL, 1378' FWL  
Sec 3-T10N-R58W



West(-)/East(+) (2000 usft/in)



## Planning Report

<b>Database:</b>	EDM 5000.16 Single User Db	<b>Local Co-ordinate Reference:</b>	Well RAZOR 10E-0303A
<b>Company:</b>	FUNDARE RESOURCES OPERATING COMPANY, LLC	<b>TVD Reference:</b>	KB 25' @ 5052.00usft
<b>Project:</b>	WELD COUNTY	<b>MD Reference:</b>	KB 25' @ 5052.00usft
<b>Site:</b>	SEC 10-T10N-R58W	<b>North Reference:</b>	True
<b>Well:</b>	RAZOR 10E-0303A	<b>Survey Calculation Method:</b>	Minimum Curvature
<b>Wellbore:</b>	OWB		
<b>Design:</b>	PROPOSAL 1		

<b>Project</b>	WELD COUNTY		
<b>Map System:</b>	US State Plane 1983	<b>System Datum:</b>	Mean Sea Level
<b>Geo Datum:</b>	North American Datum 1983		
<b>Map Zone:</b>	Colorado Northern Zone		

<b>Site</b>	SEC 10-T10N-R58W		
<b>Site Position:</b>		<b>Northing:</b>	1,560,515.21 usft
<b>From:</b>	Lat/Long	<b>Easting:</b>	3,453,234.23 usft
<b>Position Uncertainty:</b>	0.00 usft	<b>Slot Radius:</b>	13.200 in
		<b>Latitude:</b>	40.860495°N
		<b>Longitude:</b>	103.861425°W

Well		RAZOR 10E-0303A				
Well Position	+N/-S	0.00 usft	Northing:	1,558,277.48 usft	Latitude:	40.854314°N
	+E/-W	0.00 usft	Easting:	3,454,027.91 usft	Longitude:	103.858706°W
Position Uncertainty		0.00 usft	Wellhead Elevation:	usft	Ground Level:	5,027.00 usft
Grid Convergence:		1.06 °				

<b>Wellbore</b>	OWB				
<b>Magnetics</b>	<b>Model Name</b>	<b>Sample Date</b>	<b>Declination (°)</b>	<b>Dip Angle (°)</b>	<b>Field Strength (nT)</b>
	IGRF2020	4/29/2023	7.21	67.06	52,080.42306360

<b>Design</b>	PROPOSAL 1				
<b>Audit Notes:</b>					
<b>Version:</b>	<b>Phase:</b>	PROTOTYPE	<b>Tie On Depth:</b>	0.00	
<b>Vertical Section:</b>	<b>Depth From (TVD) (usft)</b>	<b>+N/-S (usft)</b>	<b>+E/-W (usft)</b>	<b>Direction (°)</b>	
	0.00	0.00	0.00	4.69	

<b>Plan Survey Tool Program</b>	<b>Date</b>	4/30/2023			
<b>Depth From (usft)</b>	<b>Depth To (usft)</b>	<b>Survey (Wellbore)</b>	<b>Tool Name</b>	<b>Remarks</b>	
1	0.00	14,468.55 PROPOSAL 1 (OWB)	MWD		
			OWSG MWD - Standard		

## Planning Report

<b>Database:</b>	EDM 5000.16 Single User Db	<b>Local Co-ordinate Reference:</b>	Well RAZOR 10E-0303A
<b>Company:</b>	FUNDARE RESOURCES OPERATING COMPANY, LLC	<b>TVD Reference:</b>	KB 25' @ 5052.00usft
<b>Project:</b>	WELD COUNTY	<b>MD Reference:</b>	KB 25' @ 5052.00usft
<b>Site:</b>	SEC 10-T10N-R58W	<b>North Reference:</b>	True
<b>Well:</b>	RAZOR 10E-0303A	<b>Survey Calculation Method:</b>	Minimum Curvature
<b>Wellbore:</b>	OWB		
<b>Design:</b>	PROPOSAL 1		

Plan Sections										
Measured Depth (usft)	Inclination (°)	Azimuth (°)	Vertical Depth (usft)	+N/-S (usft)	+E/-W (usft)	Dogleg Rate (°/100ft)	Build Rate (°/100ft)	Turn Rate (°/100ft)	TFO (°)	Target
0.00	0.00	0.00	0.00	0.00	0.00	0.00	0.00	0.00	0.00	
600.00	0.00	0.00	600.00	0.00	0.00	0.00	0.00	0.00	0.00	
1,222.03	12.44	146.67	1,217.16	-56.20	36.96	2.00	2.00	0.00	146.67	
5,714.83	12.44	146.67	5,604.46	-864.84	568.83	0.00	0.00	0.00	0.00	
6,718.83	90.00	359.74	6,276.00	-300.93	647.08	10.00	7.72	-14.63	-146.30	LP-RAZOR 10E-0303
14,268.88	90.00	359.74	6,276.00	7,249.04	612.31	0.00	0.00	0.00	0.00	BPZ-RAZOR 10E-0303
14,270.10	90.00	359.76	6,276.00	7,250.26	612.30	2.00	0.00	2.00	90.00	PBHL-RAZOR 10E-0303
14,468.55	90.00	359.76	6,276.00	7,448.70	611.47	0.00	0.00	0.00	0.00	PBHL-RAZOR 10E-0303

# Planning Report

<b>Database:</b>	EDM 5000.16 Single User Db	<b>Local Co-ordinate Reference:</b>	Well RAZOR 10E-0303A
<b>Company:</b>	FUNDARE RESOURCES OPERATING COMPANY, LLC	<b>TVD Reference:</b>	KB 25' @ 5052.00usft
<b>Project:</b>	WELD COUNTY	<b>MD Reference:</b>	KB 25' @ 5052.00usft
<b>Site:</b>	SEC 10-T10N-R58W	<b>North Reference:</b>	True
<b>Well:</b>	RAZOR 10E-0303A	<b>Survey Calculation Method:</b>	Minimum Curvature
<b>Wellbore:</b>	OWB		
<b>Design:</b>	PROPOSAL 1		

Planned Survey										
Measured Depth (usft)	Inclination (°)	Azimuth (°)	Vertical Depth (usft)	+N/-S (usft)	+E/-W (usft)	Vertical Section (usft)	Dogleg Rate (°/100ft)	Build Rate (°/100ft)	Turn Rate (°/100ft)	
0.00	0.00	0.00	0.00	0.00	0.00	0.00	0.00	0.00	0.00	
600.00	0.00	0.00	600.00	0.00	0.00	0.00	0.00	0.00	0.00	
Start Build 2.00										
700.00	2.00	146.67	699.98	-1.46	0.96	-1.37	2.00	2.00	0.00	
800.00	4.00	146.67	799.84	-5.83	3.83	-5.50	2.00	2.00	0.00	
900.00	6.00	146.67	899.45	-13.11	8.62	-12.36	2.00	2.00	0.00	
1,000.00	8.00	146.67	998.70	-23.29	15.32	-21.96	2.00	2.00	0.00	
1,100.00	10.00	146.67	1,097.47	-36.36	23.92	-34.28	2.00	2.00	0.00	
1,200.00	12.00	146.67	1,195.62	-52.30	34.40	-49.31	2.00	2.00	0.00	
1,222.03	12.44	146.67	1,217.16	-56.20	36.96	-52.99	2.00	2.00	0.00	
Start 4492.79 hold at 1222.03 MD										
1,300.00	12.44	146.67	1,293.29	-70.23	46.19	-66.22	0.00	0.00	0.00	
1,400.00	12.44	146.67	1,390.95	-88.23	58.03	-83.19	0.00	0.00	0.00	
1,500.00	12.44	146.67	1,488.60	-106.23	69.87	-100.16	0.00	0.00	0.00	
1,600.00	12.44	146.67	1,586.25	-124.23	81.71	-117.13	0.00	0.00	0.00	
1,700.00	12.44	146.67	1,683.90	-142.23	93.55	-134.10	0.00	0.00	0.00	
1,800.00	12.44	146.67	1,781.55	-160.23	105.39	-151.07	0.00	0.00	0.00	
1,900.00	12.44	146.67	1,879.20	-178.22	117.22	-168.04	0.00	0.00	0.00	
2,000.00	12.44	146.67	1,976.86	-196.22	129.06	-185.01	0.00	0.00	0.00	
2,100.00	12.44	146.67	2,074.51	-214.22	140.90	-201.98	0.00	0.00	0.00	
2,200.00	12.44	146.67	2,172.16	-232.22	152.74	-218.95	0.00	0.00	0.00	
2,300.00	12.44	146.67	2,269.81	-250.22	164.58	-235.92	0.00	0.00	0.00	
2,400.00	12.44	146.67	2,367.46	-268.22	176.42	-252.88	0.00	0.00	0.00	
2,500.00	12.44	146.67	2,465.12	-286.22	188.25	-269.85	0.00	0.00	0.00	
2,600.00	12.44	146.67	2,562.77	-304.22	200.09	-286.82	0.00	0.00	0.00	
2,700.00	12.44	146.67	2,660.42	-322.21	211.93	-303.79	0.00	0.00	0.00	
2,800.00	12.44	146.67	2,758.07	-340.21	223.77	-320.76	0.00	0.00	0.00	
2,900.00	12.44	146.67	2,855.72	-358.21	235.61	-337.73	0.00	0.00	0.00	
3,000.00	12.44	146.67	2,953.38	-376.21	247.45	-354.70	0.00	0.00	0.00	
3,100.00	12.44	146.67	3,051.03	-394.21	259.28	-371.67	0.00	0.00	0.00	
3,200.00	12.44	146.67	3,148.68	-412.21	271.12	-388.64	0.00	0.00	0.00	
3,300.00	12.44	146.67	3,246.33	-430.21	282.96	-405.61	0.00	0.00	0.00	
3,400.00	12.44	146.67	3,343.98	-448.20	294.80	-422.58	0.00	0.00	0.00	
3,500.00	12.44	146.67	3,441.64	-466.20	306.64	-439.55	0.00	0.00	0.00	
3,600.00	12.44	146.67	3,539.29	-484.20	318.47	-456.52	0.00	0.00	0.00	
3,700.00	12.44	146.67	3,636.94	-502.20	330.31	-473.49	0.00	0.00	0.00	
3,800.00	12.44	146.67	3,734.59	-520.20	342.15	-490.46	0.00	0.00	0.00	
3,900.00	12.44	146.67	3,832.24	-538.20	353.99	-507.43	0.00	0.00	0.00	
4,000.00	12.44	146.67	3,929.90	-556.20	365.83	-524.40	0.00	0.00	0.00	
4,100.00	12.44	146.67	4,027.55	-574.19	377.67	-541.37	0.00	0.00	0.00	
4,200.00	12.44	146.67	4,125.20	-592.19	389.50	-558.34	0.00	0.00	0.00	
4,300.00	12.44	146.67	4,222.85	-610.19	401.34	-575.31	0.00	0.00	0.00	
4,400.00	12.44	146.67	4,320.50	-628.19	413.18	-592.28	0.00	0.00	0.00	
4,500.00	12.44	146.67	4,418.16	-646.19	425.02	-609.25	0.00	0.00	0.00	
4,600.00	12.44	146.67	4,515.81	-664.19	436.86	-626.22	0.00	0.00	0.00	
4,700.00	12.44	146.67	4,613.46	-682.19	448.70	-643.19	0.00	0.00	0.00	
4,800.00	12.44	146.67	4,711.11	-700.19	460.53	-660.16	0.00	0.00	0.00	
4,900.00	12.44	146.67	4,808.76	-718.18	472.37	-677.13	0.00	0.00	0.00	
5,000.00	12.44	146.67	4,906.42	-736.18	484.21	-694.10	0.00	0.00	0.00	
5,100.00	12.44	146.67	5,004.07	-754.18	496.05	-711.07	0.00	0.00	0.00	
5,200.00	12.44	146.67	5,101.72	-772.18	507.89	-728.04	0.00	0.00	0.00	
5,300.00	12.44	146.67	5,199.37	-790.18	519.73	-745.01	0.00	0.00	0.00	
5,400.00	12.44	146.67	5,297.02	-808.18	531.56	-761.98	0.00	0.00	0.00	

# Planning Report

<b>Database:</b>	EDM 5000.16 Single User Db	<b>Local Co-ordinate Reference:</b>	Well RAZOR 10E-0303A
<b>Company:</b>	FUNDARE RESOURCES OPERATING COMPANY, LLC	<b>TVD Reference:</b>	KB 25' @ 5052.00usft
<b>Project:</b>	WELD COUNTY	<b>MD Reference:</b>	KB 25' @ 5052.00usft
<b>Site:</b>	SEC 10-T10N-R58W	<b>North Reference:</b>	True
<b>Well:</b>	RAZOR 10E-0303A	<b>Survey Calculation Method:</b>	Minimum Curvature
<b>Wellbore:</b>	OWB		
<b>Design:</b>	PROPOSAL 1		

Planned Survey										
Measured Depth (usft)	Inclination (°)	Azimuth (°)	Vertical Depth (usft)	+N/-S (usft)	+E/-W (usft)	Vertical Section (usft)	Dogleg Rate (°/100ft)	Build Rate (°/100ft)	Turn Rate (°/100ft)	
5,500.00	12.44	146.67	5,394.68	-826.18	543.40	-778.95	0.00	0.00	0.00	
5,600.00	12.44	146.67	5,492.33	-844.17	555.24	-795.92	0.00	0.00	0.00	
5,700.00	12.44	146.67	5,589.98	-862.17	567.08	-812.89	0.00	0.00	0.00	
5,714.83	12.44	146.67	5,604.46	-864.84	568.83	-815.40	0.00	0.00	0.00	
Start DLS 10.00 TFO -146.30										
5,800.00	7.12	105.12	5,688.46	-873.90	578.99	-823.60	10.00	-6.25	-48.78	
5,900.00	10.62	39.70	5,787.47	-868.41	590.88	-817.16	10.00	3.50	-65.42	
6,000.00	19.33	19.80	5,884.04	-845.70	602.40	-793.57	10.00	8.72	-19.90	
6,100.00	28.88	12.34	5,975.23	-806.43	613.20	-753.56	10.00	9.54	-7.46	
6,200.00	38.64	8.40	6,058.28	-751.82	622.95	-698.34	10.00	9.76	-3.95	
6,300.00	48.48	5.85	6,130.66	-683.52	631.34	-629.58	10.00	9.85	-2.54	
6,400.00	58.37	3.99	6,190.18	-603.60	638.14	-549.37	10.00	9.89	-1.87	
6,500.00	68.28	2.48	6,235.01	-514.50	643.13	-460.16	10.00	9.91	-1.50	
6,600.00	78.20	1.18	6,263.81	-418.92	646.15	-364.65	10.00	9.92	-1.31	
6,700.00	88.13	359.96	6,275.69	-319.76	647.13	-265.74	10.00	9.93	-1.22	
6,718.83	90.00	359.74	6,276.00	-300.93	647.08	-246.98	10.00	9.93	-1.20	
Start 7550.05 hold at 6718.83 MD										
6,800.00	90.00	359.74	6,276.00	-219.76	646.70	-166.11	0.00	0.00	0.00	
6,900.00	90.00	359.74	6,276.00	-119.76	646.24	-66.49	0.00	0.00	0.00	
7,000.00	90.00	359.74	6,276.00	-19.76	645.78	33.14	0.00	0.00	0.00	
7,100.00	90.00	359.74	6,276.00	80.23	645.32	132.76	0.00	0.00	0.00	
7,200.00	90.00	359.74	6,276.00	180.23	644.86	232.39	0.00	0.00	0.00	
7,300.00	90.00	359.74	6,276.00	280.23	644.40	332.02	0.00	0.00	0.00	
7,400.00	90.00	359.74	6,276.00	380.23	643.94	431.64	0.00	0.00	0.00	
7,500.00	90.00	359.74	6,276.00	480.23	643.48	531.27	0.00	0.00	0.00	
7,600.00	90.00	359.74	6,276.00	580.23	643.02	630.89	0.00	0.00	0.00	
7,700.00	90.00	359.74	6,276.00	680.23	642.56	730.52	0.00	0.00	0.00	
7,800.00	90.00	359.74	6,276.00	780.23	642.10	830.15	0.00	0.00	0.00	
7,900.00	90.00	359.74	6,276.00	880.23	641.64	929.77	0.00	0.00	0.00	
8,000.00	90.00	359.74	6,276.00	980.23	641.18	1,029.40	0.00	0.00	0.00	
8,100.00	90.00	359.74	6,276.00	1,080.22	640.72	1,129.02	0.00	0.00	0.00	
8,200.00	90.00	359.74	6,276.00	1,180.22	640.26	1,228.65	0.00	0.00	0.00	
8,300.00	90.00	359.74	6,276.00	1,280.22	639.80	1,328.28	0.00	0.00	0.00	
8,400.00	90.00	359.74	6,276.00	1,380.22	639.34	1,427.90	0.00	0.00	0.00	
8,500.00	90.00	359.74	6,276.00	1,480.22	638.88	1,527.53	0.00	0.00	0.00	
8,600.00	90.00	359.74	6,276.00	1,580.22	638.41	1,627.15	0.00	0.00	0.00	
8,700.00	90.00	359.74	6,276.00	1,680.22	637.95	1,726.78	0.00	0.00	0.00	
8,800.00	90.00	359.74	6,276.00	1,780.22	637.49	1,826.41	0.00	0.00	0.00	
8,900.00	90.00	359.74	6,276.00	1,880.22	637.03	1,926.03	0.00	0.00	0.00	
9,000.00	90.00	359.74	6,276.00	1,980.21	636.57	2,025.66	0.00	0.00	0.00	
9,100.00	90.00	359.74	6,276.00	2,080.21	636.11	2,125.28	0.00	0.00	0.00	
9,200.00	90.00	359.74	6,276.00	2,180.21	635.65	2,224.91	0.00	0.00	0.00	
9,300.00	90.00	359.74	6,276.00	2,280.21	635.19	2,324.54	0.00	0.00	0.00	
9,400.00	90.00	359.74	6,276.00	2,380.21	634.73	2,424.16	0.00	0.00	0.00	
9,500.00	90.00	359.74	6,276.00	2,480.21	634.27	2,523.79	0.00	0.00	0.00	
9,600.00	90.00	359.74	6,276.00	2,580.21	633.81	2,623.41	0.00	0.00	0.00	
9,700.00	90.00	359.74	6,276.00	2,680.21	633.35	2,723.04	0.00	0.00	0.00	
9,800.00	90.00	359.74	6,276.00	2,780.21	632.89	2,822.67	0.00	0.00	0.00	
9,900.00	90.00	359.74	6,276.00	2,880.20	632.43	2,922.29	0.00	0.00	0.00	
10,000.00	90.00	359.74	6,276.00	2,980.20	631.97	3,021.92	0.00	0.00	0.00	
10,100.00	90.00	359.74	6,276.00	3,080.20	631.51	3,121.54	0.00	0.00	0.00	
10,200.00	90.00	359.74	6,276.00	3,180.20	631.05	3,221.17	0.00	0.00	0.00	
10,300.00	90.00	359.74	6,276.00	3,280.20	630.59	3,320.80	0.00	0.00	0.00	

# Planning Report

<b>Database:</b>	EDM 5000.16 Single User Db	<b>Local Co-ordinate Reference:</b>	Well RAZOR 10E-0303A
<b>Company:</b>	FUNDARE RESOURCES OPERATING COMPANY, LLC	<b>TVD Reference:</b>	KB 25' @ 5052.00usft
<b>Project:</b>	WELD COUNTY	<b>MD Reference:</b>	KB 25' @ 5052.00usft
<b>Site:</b>	SEC 10-T10N-R58W	<b>North Reference:</b>	True
<b>Well:</b>	RAZOR 10E-0303A	<b>Survey Calculation Method:</b>	Minimum Curvature
<b>Wellbore:</b>	OWB		
<b>Design:</b>	PROPOSAL 1		

Planned Survey										
Measured Depth (usft)	Inclination (°)	Azimuth (°)	Vertical Depth (usft)	+N/-S (usft)	+E/-W (usft)	Vertical Section (usft)	Dogleg Rate (°/100ft)	Build Rate (°/100ft)	Turn Rate (°/100ft)	
10,400.00	90.00	359.74	6,276.00	3,380.20	630.13	3,420.42	0.00	0.00	0.00	
10,500.00	90.00	359.74	6,276.00	3,480.20	629.66	3,520.05	0.00	0.00	0.00	
10,600.00	90.00	359.74	6,276.00	3,580.20	629.20	3,619.67	0.00	0.00	0.00	
10,700.00	90.00	359.74	6,276.00	3,680.20	628.74	3,719.30	0.00	0.00	0.00	
10,800.00	90.00	359.74	6,276.00	3,780.20	628.28	3,818.93	0.00	0.00	0.00	
10,900.00	90.00	359.74	6,276.00	3,880.19	627.82	3,918.55	0.00	0.00	0.00	
11,000.00	90.00	359.74	6,276.00	3,980.19	627.36	4,018.18	0.00	0.00	0.00	
11,100.00	90.00	359.74	6,276.00	4,080.19	626.90	4,117.80	0.00	0.00	0.00	
11,200.00	90.00	359.74	6,276.00	4,180.19	626.44	4,217.43	0.00	0.00	0.00	
11,300.00	90.00	359.74	6,276.00	4,280.19	625.98	4,317.06	0.00	0.00	0.00	
11,400.00	90.00	359.74	6,276.00	4,380.19	625.52	4,416.68	0.00	0.00	0.00	
11,500.00	90.00	359.74	6,276.00	4,480.19	625.06	4,516.31	0.00	0.00	0.00	
11,600.00	90.00	359.74	6,276.00	4,580.19	624.60	4,615.93	0.00	0.00	0.00	
11,700.00	90.00	359.74	6,276.00	4,680.19	624.14	4,715.56	0.00	0.00	0.00	
11,800.00	90.00	359.74	6,276.00	4,780.18	623.68	4,815.19	0.00	0.00	0.00	
11,900.00	90.00	359.74	6,276.00	4,880.18	623.22	4,914.81	0.00	0.00	0.00	
12,000.00	90.00	359.74	6,276.00	4,980.18	622.76	5,014.44	0.00	0.00	0.00	
12,100.00	90.00	359.74	6,276.00	5,080.18	622.30	5,114.06	0.00	0.00	0.00	
12,200.00	90.00	359.74	6,276.00	5,180.18	621.84	5,213.69	0.00	0.00	0.00	
12,300.00	90.00	359.74	6,276.00	5,280.18	621.38	5,313.32	0.00	0.00	0.00	
12,400.00	90.00	359.74	6,276.00	5,380.18	620.91	5,412.94	0.00	0.00	0.00	
12,500.00	90.00	359.74	6,276.00	5,480.18	620.45	5,512.57	0.00	0.00	0.00	
12,600.00	90.00	359.74	6,276.00	5,580.18	619.99	5,612.19	0.00	0.00	0.00	
12,700.00	90.00	359.74	6,276.00	5,680.18	619.53	5,711.82	0.00	0.00	0.00	
12,800.00	90.00	359.74	6,276.00	5,780.17	619.07	5,811.45	0.00	0.00	0.00	
12,900.00	90.00	359.74	6,276.00	5,880.17	618.61	5,911.07	0.00	0.00	0.00	
13,000.00	90.00	359.74	6,276.00	5,980.17	618.15	6,010.70	0.00	0.00	0.00	
13,100.00	90.00	359.74	6,276.00	6,080.17	617.69	6,110.32	0.00	0.00	0.00	
13,200.00	90.00	359.74	6,276.00	6,180.17	617.23	6,209.95	0.00	0.00	0.00	
13,300.00	90.00	359.74	6,276.00	6,280.17	616.77	6,309.58	0.00	0.00	0.00	
13,400.00	90.00	359.74	6,276.00	6,380.17	616.31	6,409.20	0.00	0.00	0.00	
13,500.00	90.00	359.74	6,276.00	6,480.17	615.85	6,508.83	0.00	0.00	0.00	
13,600.00	90.00	359.74	6,276.00	6,580.17	615.39	6,608.45	0.00	0.00	0.00	
13,700.00	90.00	359.74	6,276.00	6,680.16	614.93	6,708.08	0.00	0.00	0.00	
13,800.00	90.00	359.74	6,276.00	6,780.16	614.47	6,807.71	0.00	0.00	0.00	
13,900.00	90.00	359.74	6,276.00	6,880.16	614.01	6,907.33	0.00	0.00	0.00	
14,000.00	90.00	359.74	6,276.00	6,980.16	613.55	7,006.96	0.00	0.00	0.00	
14,100.00	90.00	359.74	6,276.00	7,080.16	613.09	7,106.58	0.00	0.00	0.00	
14,200.00	90.00	359.74	6,276.00	7,180.16	612.63	7,206.21	0.00	0.00	0.00	
14,268.88	90.00	359.74	6,276.00	7,249.04	612.31	7,274.84	0.00	0.00	0.00	
Start DLS 2.00 TFO 90.00										
14,270.10	90.00	359.76	6,276.00	7,250.26	612.30	7,276.05	2.00	0.00	2.00	
Start 198.44 hold at 14270.10 MD										
14,300.00	90.00	359.76	6,276.00	7,280.16	612.18	7,305.84	0.00	0.00	0.00	
14,400.00	90.00	359.76	6,276.00	7,380.16	611.76	7,405.47	0.00	0.00	0.00	
14,468.55	90.00	359.76	6,276.00	7,448.70	611.47	7,473.76	0.00	0.00	0.00	
TD at 14468.55										

## Planning Report

<b>Database:</b>	EDM 5000.16 Single User Db	<b>Local Co-ordinate Reference:</b>	Well RAZOR 10E-0303A
<b>Company:</b>	FUNDARE RESOURCES OPERATING COMPANY, LLC	<b>TVD Reference:</b>	KB 25' @ 5052.00usft
<b>Project:</b>	WELD COUNTY	<b>MD Reference:</b>	KB 25' @ 5052.00usft
<b>Site:</b>	SEC 10-T10N-R58W	<b>North Reference:</b>	True
<b>Well:</b>	RAZOR 10E-0303A	<b>Survey Calculation Method:</b>	Minimum Curvature
<b>Wellbore:</b>	OWB		
<b>Design:</b>	PROPOSAL 1		

Design Targets									
Target Name - hit/miss target - Shape	Dip Angle (°)	Dip Dir. (°)	TVD (usft)	+N/-S (usft)	+E/-W (usft)	Northing (usft)	Easting (usft)	Latitude	Longitude
BPZ-RAZOR 10E-0303A - plan hits target center - Point	0.00	0.00	6,276.00	7,249.04	612.31	1,565,536.62	3,454,505.95	40.874210°N	103.856492°W
LP-RAZOR 10E-0303A - plan hits target center - Point	0.00	0.00	6,276.00	-300.93	647.08	1,557,988.58	3,454,680.44	40.853488°N	103.856367°W
PBHL-RAZOR 10E-0303A - plan hits target center - Point	0.00	0.00	6,276.00	7,448.70	611.47	1,565,736.23	3,454,501.42	40.874758°N	103.856495°W

Plan Annotations				
Measured Depth (usft)	Vertical Depth (usft)	Local Coordinates		Comment
		+N/-S (usft)	+E/-W (usft)	
600.00	600.00	0.00	0.00	Start Build 2.00
1,222.03	1,217.16	-56.20	36.96	Start 4492.79 hold at 1222.03 MD
5,714.83	5,604.46	-864.84	568.83	Start DLS 10.00 TFO -146.30
6,718.83	6,276.00	-300.93	647.08	Start 7550.05 hold at 6718.83 MD
14,268.88	6,276.00	7,249.04	612.31	Start DLS 2.00 TFO 90.00
14,270.10	6,276.00	7,250.26	612.30	Start 198.44 hold at 14270.10 MD
14,468.55	6,276.00	7,448.70	611.47	TD at 14468.55