

Inspection Photos

Location Name: TEP ROCKY MOUNTAIN LLC DEVER C Pad

Location #: 335551



Photo # 785 From entrance to location



Photo # 786 From entrance to location

Inspection Photos

Location Name: TEP ROCKY MOUNTAIN LLC DEVER C Pad

Location #: 335551



Jun 16, 2023 at 10:52:33 AM
CO

Photo # 787 Location



Jun 16, 2023 at 10:52:53 AM
CO

Photo # 788 Location



COLORADO
Oil & Gas Conservation
Commission
Department of Natural Resources

Inspection Photos

Location Name: TEP ROCKY MOUNTAIN LLC DEVER C Pad

Location #: 335551



Photo # 789 Location



Photo # 790 Location



COLORADO
Oil & Gas Conservation
Commission
Department of Natural Resources

Inspection Photos

Location Name: TEP ROCKY MOUNTAIN LLC DEVER C Pad

Location #: 335551



Photo # 791 Location



Photo # 792 Weeds/undesirable plant species around wellheads

Inspection Photos

Location Name: TEP ROCKY MOUNTAIN LLC DEVER C Pad

Location #: 335551



Photo # 793 Weeds/undesirable plant species around wellheads



Photo # 794 Weeds/undesirable plant species around wellheads



COLORADO
Oil & Gas Conservation
Commission
Department of Natural Resources

Inspection Photos

Location Name: TEP ROCKY MOUNTAIN LLC DEVER C Pad

Location #: 335551



Photo # 795 Weeds/undesirable plant species around wellheads



Photo # 796 Weeds/undesirable plant species around wellheads



COLORADO
Oil & Gas Conservation
Commission
Department of Natural Resources

Inspection Photos

Location Name: TEP ROCKY MOUNTAIN LLC DEVER C Pad

Location #: 335551



Photo # 797 Weeds/undesirable plant species around wellheads



Photo # 798 Weeds/undesirable plant species encroaching on production unit & burner assembly



COLORADO
Oil & Gas Conservation
Commission
Department of Natural Resources

Inspection Photos

Location Name: TEP ROCKY MOUNTAIN LLC DEVER C Pad

Location #: 335551



Photo # 811 Weeds/undesirable plant species in secondary containment



Photo # 812 Weeds/undesirable plant species in secondary containment & unused equipment



COLORADO
Oil & Gas Conservation
Commission
Department of Natural Resources

Inspection Photos
Location Name: TEP ROCKY MOUNTAIN LLC DEVER C Pad
Location #: 335551



Photo # 799 Meter calibration info not conspicuously posted



Photo # 800 Meter calibration info not conspicuously posted

Inspection Photos
Location Name: TEP ROCKY MOUNTAIN LLC DEVER C Pad
Location #: 335551



Photo # 806 Debris



Photo # 807 Debris

Inspection Photos

Location Name: TEP ROCKY MOUNTAIN LLC DEVER C Pad

Location #: 335551



Photo # 810 Debris



Photo # 861 Debris

Inspection Photos
Location Name: TEP ROCKY MOUNTAIN LLC DEVER C Pad
Location #: 335551



Photo # 864 Debris



Photo # 808 Unused equipment

Inspection Photos

Location Name: TEP ROCKY MOUNTAIN LLC DEVER C Pad

Location #: 335551



Photo # 809 Unused equipment



Photo # 812 Unused equipment

Inspection Photos

Location Name: TEP ROCKY MOUNTAIN LLC DEVER C Pad

Location #: 335551



Photo # 814 Unused equipment (hard hose)

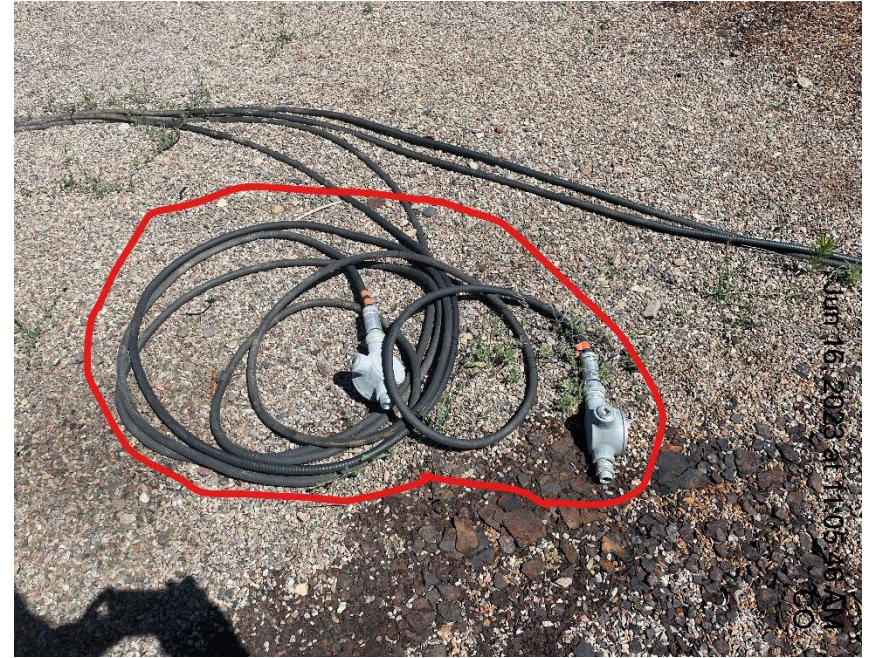


Photo # 817 Unused equipment



COLORADO
Oil & Gas Conservation
Commission
Department of Natural Resources

Inspection Photos

Location Name: TEP ROCKY MOUNTAIN LLC DEVER C Pad

Location #: 335551



Photo # 818 Stained gravel in secondary containment



Photo # 821 Stained gravel in secondary containment



COLORADO
Oil & Gas Conservation
Commission
Department of Natural Resources

Inspection Photos

Location Name: TEP ROCKY MOUNTAIN LLC DEVER C Pad

Location #: 335551



Photo # 823 Stained gravel in secondary containment



Photo # 824 Stained gravel in secondary containment

Inspection Photos

Location Name: TEP ROCKY MOUNTAIN LLC DEVER C Pad

Location #: 335551



Photo # 825 Hole in containment line/liner needs maintenance



Photo # 826 Hole in containment line/liner needs maintenance

Inspection Photos

Location Name: TEP ROCKY MOUNTAIN LLC DEVER C Pad

Location #: 335551



Photo # 827 Hole in containment line/liner needs maintenance



Photo # 828 Hole in containment line/liner needs maintenance

Inspection Photos

Location Name: TEP ROCKY MOUNTAIN LLC DEVER C Pad

Location #: 335551



Photo # 829 Holes in containment line/liner needs maintenance



Photo # 830 Hole in containment line/liner needs maintenance

Inspection Photos

Location Name: TEP ROCKY MOUNTAIN LLC DEVER C Pad

Location #: 335551



Photo # 829 Holes in containment line/liner needs maintenance



Photo # 831 Holes in containment line/liner needs maintenance

Inspection Photos

Location Name: TEP ROCKY MOUNTAIN LLC DEVER C Pad

Location #: 335551



Photo # 832 Holes in containment line/liner needs maintenance

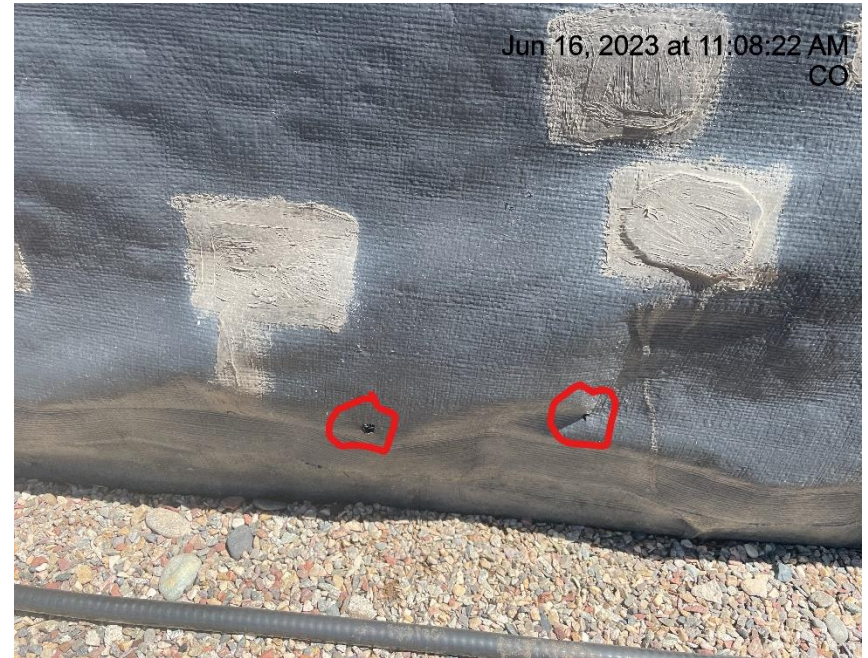


Photo # 833 Holes in containment line/liner needs maintenance



Inspection Photos

Location Name: TEP ROCKY MOUNTAIN LLC DEVER C Pad

Location #: 335551



Photo # 835 Hole in containment line/liner needs maintenance



Photo # 836 Hole in containment line/liner needs maintenance

Inspection Photos

Location Name: TEP ROCKY MOUNTAIN LLC DEVER C Pad

Location #: 335551



Photo # 837 Holes in containment line/liner needs maintenance



Photo # 838 Holes in containment line/liner needs maintenance

Inspection Photos

Location Name: TEP ROCKY MOUNTAIN LLC DEVER C Pad

Location #: 335551



Photo # 839 Holes in containment line/liner needs maintenance



Photo # 840 Hole in containment line/liner needs maintenance

Inspection Photos

Location Name: TEP ROCKY MOUNTAIN LLC DEVER C Pad

Location #: 335551



Photo # 841 Holes in containment line/liner needs maintenance



Photo # 842 Hole in containment line/liner needs maintenance

Inspection Photos

Location Name: TEP ROCKY MOUNTAIN LLC DEVER C Pad

Location #: 335551



Photo # 843 Holes in containment line/liner needs maintenance



Photo # 844 Hole in containment line/liner needs maintenance

Inspection Photos

Location Name: TEP ROCKY MOUNTAIN LLC DEVER C Pad

Location #: 335551



Photo # 845 Holes in containment line/liner needs maintenance



Photo # 846 Holes in containment line/liner needs maintenance

Inspection Photos

Location Name: TEP ROCKY MOUNTAIN LLC DEVER C Pad

Location #: 335551



Photo # 847 Hole in containment line/liner needs maintenance



Photo # 848 Hole in containment line/liner needs maintenance

Inspection Photos

Location Name: TEP ROCKY MOUNTAIN LLC DEVER C Pad

Location #: 335551



Photo # 849 Hole in containment line/liner needs maintenance



Photo # 850 Hole in containment line/liner needs maintenance

Inspection Photos

Location Name: TEP ROCKY MOUNTAIN LLC DEVER C Pad

Location #: 335551



Photo # 851 Holes in containment line/liner needs maintenance



Photo # 852 Holes in containment line/liner needs maintenance

Inspection Photos

Location Name: TEP ROCKY MOUNTAIN LLC DEVER C Pad

Location #: 335551



Photo # 853 Holes in containment line/liner needs maintenance



Photo # 854 Hole in containment line/liner needs maintenance

Inspection Photos

Location Name: TEP ROCKY MOUNTAIN LLC DEVER C Pad

Location #: 335551



Photo # 855 Holes in containment line/liner needs maintenance



Photo # 856 Hole in containment line/liner needs maintenance

Inspection Photos

Location Name: TEP ROCKY MOUNTAIN LLC DEVER C Pad

Location #: 335551



Photo # 867 Debris