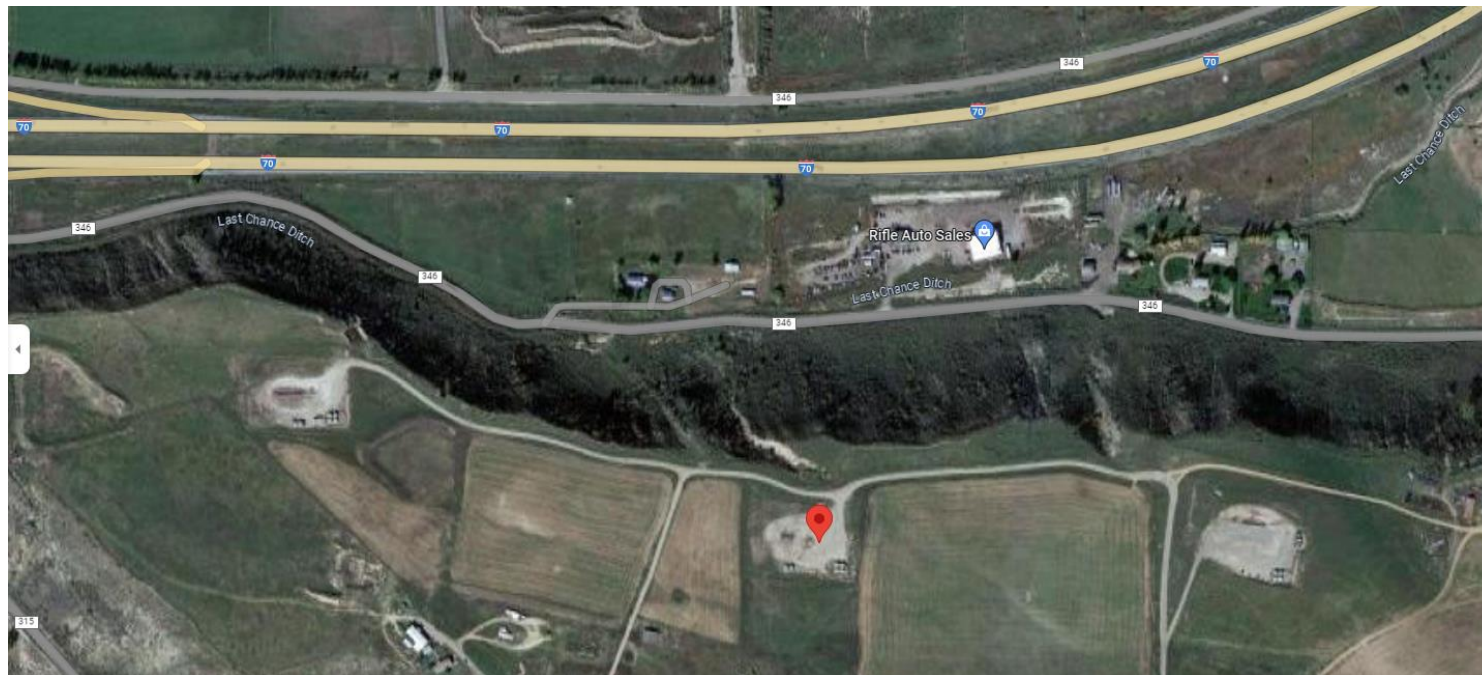


Storm Water Management and Erosion control
Location Name: TEP ROCKY MOUNTAIN LLC DEVER C Pad
Location #: 335551



**Location Overview: Location is within a 411a Surface Water
Intermediate Buffer**
Section/Township/Range: 17 6S92W



COLORADO
Oil & Gas Conservation
Commission
Department of Natural Resources

Storm water Management and Erosion control
Location Name: TEP ROCKY MOUNTAIN LLC DEVER C Pad
Location #: 335551



North West corner of location.



North East corner of location.



South West corner of location.



South East corner of location.