



Job Summary

Ticket Number

TN#

BCO-2303-0046

Ticket Date

3/19/2023

COUNTY	COMPANY	API Number
WELD (CO)	OXY USA INC	0512307416
WELL NAME	RIG	JOB TYPE
HANKINS 1	Ensign 122	CM-P2A-PERM.
SURFACE WELL LOCATION	CJES Field Supervisor	CUSTOMER REP
40.389584 -104.873475	Jeff Kopp	Jeremy Duty

EMPLOYEES

Mike A		
Doug G		
Carlos W		

WELL PROFILE

Max Treating Pressure (psi):	4000	Bottom Hole Static Temperature (°F):	
Bottom Hole Circulating Temperature (°F):		Well Type:	

Open Hole

1	Size (in)	TMD From (ft)	TMD to (ft)	TVD From (Ft)	TVD to (Ft)
	7.88	225	6070		
2	Size (in)	TMD From (ft)	TMD to (ft)	TVD From (Ft)	TVD to (Ft)

Casing/Tubing/Drill Pipe

Type	Size (in)	Weight (lb/ft)	Grade	TMD From (ft)	TMD to (ft)	TVD From (Ft)	TVD to (Ft)
Surface	8 5/8	24		0	225		
Type	Size (in)	Weight (lb/ft)	Grade	TMD From (ft)	TMD to (ft)	TVD From (Ft)	TVD to (Ft)
Drill Pipe	4 1/2			0	6070		
Type	Size (in)	Weight (lb/ft)	Grade	TMD From (ft)	TMD to (ft)	TVD From (Ft)	TVD to (Ft)

CEMENT DATA

Stage 1: 3-19-2023

Type: Nio Plug

From Depth (ft): 5419 To Depth (ft): 6070

Volume (sacks): 145 Volume (bbls): 39.2

Cement & Additives:

Density (ppg) Yield (ft³/sk) Water Req.

15.8 1.52 6.18

Stage 2: 3-19-2023

Type: Sussex Plug

From Depth (ft): 3995 To Depth (ft): 4912

Volume (sacks): 265 Volume (bbls): 55.2

Cement & Additives:

Density (ppg) Yield (ft³/sk) Water Req.

15.8 1.17 5.04

Stage 3: 3-20-2023

Type: Balance Plug

From Depth (ft): 685 To Depth (ft): 1608

Volume (sacks): 260 Volume (bbls): 55.6

Cement & Additives:

Density (ppg) Yield (ft³/sk) Water Req.

15.8 1.20 5.13

Stage 4: 3-20-2023

Type: Shoe Plug

From Depth (ft): 171 To Depth (ft): 401

Volume (sacks): 80 Volume (bbls): 17

Cement & Additives:

Density (ppg) Yield (ft³/sk) Water Req.

15.8 1.20 5.13

SUMMARY

			Stage 1	Stage 2
Preflushes:	4 bbls of Fresh Water	Calculated Displacement (bbl):	72.5	50.4
	3 bbls of Fresh Water	Actual Displacement (bbl):	72.5	50.4
	5 bbls of Fresh Water			
Total Preflush/Spacer Volume (bbl):	16	Plug Bump (Y/N):	N/A	Bump Pressure (psi): N/A
Total Slurry Volume (bbl):	167	Lost Returns (Y/N):	N	(if Y, when)
Total Fluid Pumped	183			
Returns to Surface:				

Job Notes (fluids pumped / procedures / tools / etc.):

Filled lines and pressure tested to 5451psi. Pumped fresh water before each plug and verified mud scale @15.8ppg. Plug 1 pumped 145sxs @15.8ppg.1.52y 6.18wr. Displaced 20bbls then rig took over and finished with mud. Plug 2 pumped 265sxs @15.8ppg 1.17y 5.04wr. Displaced 22bbls then rig took over and finished with mud. Plug 3 pumped 260sxs @15.8ppg 1.2y 5.13wr. Displace 7.3bbls (calculated was 3.4). Plug 4.80sxs @15.8ppg 1.2y 5.13wr. Displace 3.5bbls

Thank You For Using

NexTier Completion Solutions

Customer Representative Signature:



Job Summary

Ticket Number
TN# **BCO-2303-0046** Ticket Date
3/20/2023

COUNTY	COMPANY	API Number
WELD (CO)	OXY USA INC	512307416
WELL NAME	RIG	JOB TYPE
HANKINS 1	Ensign 122	CM-P2A-PERM.
SURFACE WELL LOCATION	CJES Field Supervisor	CUSTOMER REP
40.389584 -104.873475	Jeff Kopp	Jeremy Duty

EMPLOYEES		
<i>Mike A</i>		
<i>Doug G</i>		
<i>Carlos W</i>		

WELL PROFILE			
Max Treating Pressure (psi):	1000	Bottom Hole Static Temperature (°F):	
Bottom Hole Circulating Temperature (°F):		Well Type:	

Open Hole

1	Size (in)	TMD From (ft)	TMD to (ft)	TVD From (Ft)	TVD to (Ft)
2	Size (in)	TMD From (ft)	TMD to (ft)	TVD From (Ft)	TVD to (Ft)

Casing/Tubing/Drill Pipe

Type	Size (in)	Weight (lb/ft)	Grade	TMD From (ft)	TMD to (ft)	TVD From (Ft)	TVD to (Ft)
Drill Pipe	4 1/2			0	133		
Type	Size (in)	Weight (lb/ft)	Grade	TMD From (ft)	TMD to (ft)	TVD From (Ft)	TVD to (Ft)
Surface	8 5/8	24		0	133		
Type	Size (in)	Weight (lb/ft)	Grade	TMD From (ft)	TMD to (ft)	TVD From (Ft)	TVD to (Ft)

CEMENT DATA

Stage 1:
Type: **Surface Plug**
From Depth (ft): **0** To Depth (ft): **133**
Volume (sacks): **38** Volume (bbls): **8**

Cement & Additives:	Density (ppg)	Yield (ft³/sk)	Water Req.
	15.8	1.20	5.13

Stage 2:
Type: **Top Off**
From Depth (ft): **0** To Depth (ft): **8**
Volume (sacks): **2** Volume (bbls): **0.5**

Cement & Additives:	Density (ppg)	Yield (ft³/sk)	Water Req.
	15.8	1.20	5.13

Stage 3:
Type:
From Depth (ft): To Depth (ft):
Volume (sacks): Volume (bbls):

Cement & Additives:	Density (ppg)	Yield (ft³/sk)	Water Req.

Stage 4:
Type:
From Depth (ft): To Depth (ft):
Volume (sacks): Volume (bbls):

Cement & Additives:	Density (ppg)	Yield (ft³/sk)	Water Req.

SUMMARY

Preflushes:	bbls of	Calculated Displacement (bbl):	Stage 1	Stage 2
	bbls of	Actual Displacement (bbl):		
	bbls of			
Total Preflush/Spacer Volume (bbl):		Plug Bump (Y/N):	N/A	Bump Pressure (psi): N/A
Total Slurry Volume (bbl):	8.5	Lost Returns (Y/N):	N	(if Y, when)
Total Fluid Pumped				
Returns to Surface:				

Job Notes (fluids pumped / procedures / tools / etc.):

Batched up cement and verified mud scale @ 15.8ppg. Pumped 38sxs @ 15.8ppg 1.20y 5.13wr to bring cement to surface. Rig pulled drill pipe out and then we topped off well with 2sxs @ 15.8ppg 1.20y 5.13wr.

Customer Representative Signature:

Thank You For Using
NexTier Completion Solutions

Cement Job Log



NexTier Completion Solutions
3990 Rogerdale Rd., Houston, TX 77042
(713)325-6000

Customer:	OXY USA INC	Date:	19-Mar-23	Serv. Supervisor:	Jeff Kopp	
Cust. Rep.:	Jeremy Duty	Ticket #:	BCO-2303-0046	Serv. Center	Brighton - 3021	
Well Name:	HANKINS 1	API Well #:	0512307416	County:	WELD (CO)	State: COLORADO
Well Type:	Oil	Rig:	Ensign 122	Type of Job:	CM-P2A-PERM.	

Materials Furnished by NexTier

Plugs	Casing Hardware	Physical Slurry Properties							
		Sacks of Cement	Fluid Density (lb/gal)	Excess	Yield (cuft/sk)	Mix Water (gal/sk)	Fluid Volume (bbls)	Fluid Volume (cuft)	Mix Water (bbls)
5 bbl Water				0%	-	-	5.00	-	
Balance Plug 1 - NIO AGM	100 % NCM-914 +35.0 % NWT-766+0.4 % NFL-551+0.3 % NDS-417+0.2 % NRT-213+0.4 % NFL-549	145	15.8	30%	1.52	6.18	39.25	220.37	21
Balance Plug 2 - Sussex AGM	100 % NCM-914 +0.4 % NFL-551+0.3 % NDS-417+0.25 % NFL-549+2.0 % NAC-101	265	15.8	30%	1.17	5.04	55.41	311.14	32
Balance Plug 3 - Upper AGM Cement Recommended to split into	100 % NCM-914 +0.4 % NFL-551+4.0 % NAC-101+1.5 % NAC-110	260	15.8	30%	1.20	5.13	55.76	313.11	32
Shoe Plug - Upper AGM	100 % NCM-914 +0.4 % NFL-551+4.0 % NAC-101+1.5 % NAC-110	80	15.8	30%	1.20	5.13	17.16	96.34	10
Surface Plug - Surface AGM	100 % NCM-914 +0.4 % NFL-551+4.0 % NAC-101+2.0 % NAC-110	50	15.8	0%	1.21	5.13	10.76	60.42	6
				0%	-	-		-	
				0%	-	-		-	
				0%	-	-		-	
Displacement Chemicals:									

OPEN HOLE DATA			TUBULAR DATA									
7.88 in. O.H. 225 to 5,997 ft						SIZE WEIGHT	THRD	DEPTH	GRADE	ID	BURST	COLLAPSE
Ambient Tmp.	Bulk Tmp.	Slurry 1 Tmp.	Slurry 2 Tmp.	Slurry 3 Tmp.	Slurry 4 Tmp.	N/A		(ft)		(in)	(psi)	(psi)
46.0 °F	46.0 °F	70.0 °F	65.0 °F	70.0 °F	65.0 °F	N/A		N/A	N/A	N/A	N/A	N/A
PREVIOUS CASING DATA				PERFORATED INTERVAL DATA					CASING EQUIPMENT DEPTHS			
8.625 in. 24# (0 to 225 ft)				TOP		BTM	SPF	SIZE	SHOE	FLOAT	STAGE	ACP
				N/A		N/A	N/A	N/A	N/A	N/A	N/A	
				N/A		N/A	N/A	N/A				
WELL FLUID		DISPLACEMENT FLUID				DIFF PRESS	CSG LIFT	MAX PRESS	Mix H2O Chlorides (ppm)	Mix H2O pH	Mix H2O Temp	WATER ON LOC (bbl)
TYPE	DENSITY	VOLUME	TYPE	DENSITY		(psi)	(psi)	(psi)				
WATER BASED	8.3 ppg	72.5 bbl	H2O	8.3 ppg		N/A	N/A	4000	N/A	N/A	N/A	1000
Bumped Plug	Final Differential (psi)	Floats Held (Y/N)	PSI Left on Casing	Cement to Surface (bbl)	Top of Cement (ft)	Full Circ. During Job (Y/N)	Max Pump Pressure (psi)	Casing Rotation	Additional Hrs Charged (hrs)	Casing Reciprocation	Rathole Length (ft)	
					-	Yes						

Comments/Additional Details:

Plug 1 Displace 72.5bbls and TOC 5419ft. Plug 2 displace 50.4bbls and TOC 3995. Plug 3 displaced 7.3bbls and TOC 685ft. Plug 4 displaced 3.5bbls and TOC 171ft. Plug 5 was surface plug. Took 8bbls to bring cement to surface and 0.5bbls to top off.

						<div>Jeff Kopp</div> <div>Service Supervisor</div>						<div>19-Mar-23</div> <div>Date</div>
--	--	--	--	--	--	--	--	--	--	--	--	--------------------------------------



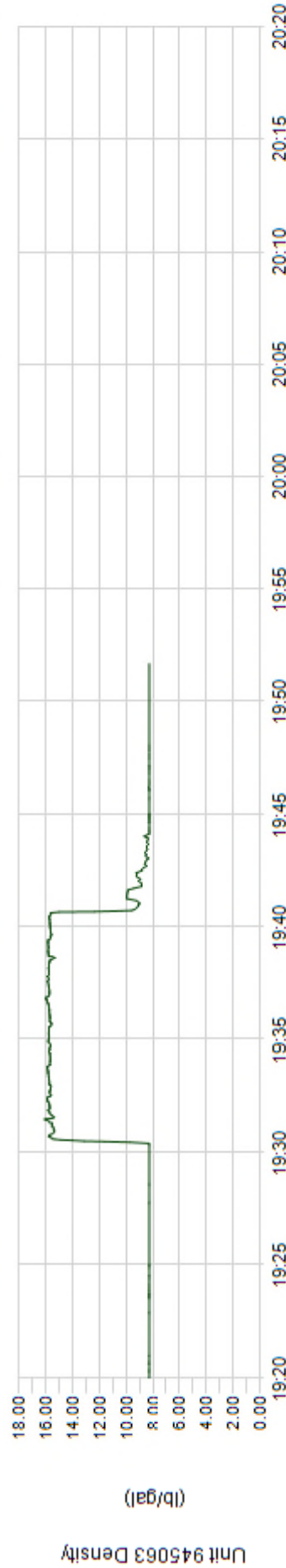
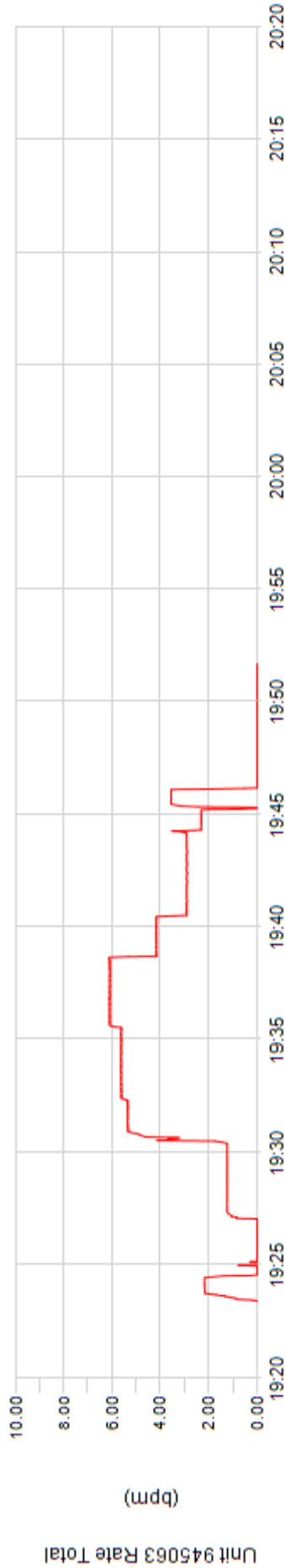
Client
Ticket No. 23030046
Location
Comments PLUG 1

Client Rep
Well Name
Job Type

Jeremy Duty
HANKINS 1
Abandonment Plugs

Supervisor
Unit No.
Service District
Job Date

Jeff Kopp
945063
Brighton Co
03/19/2023





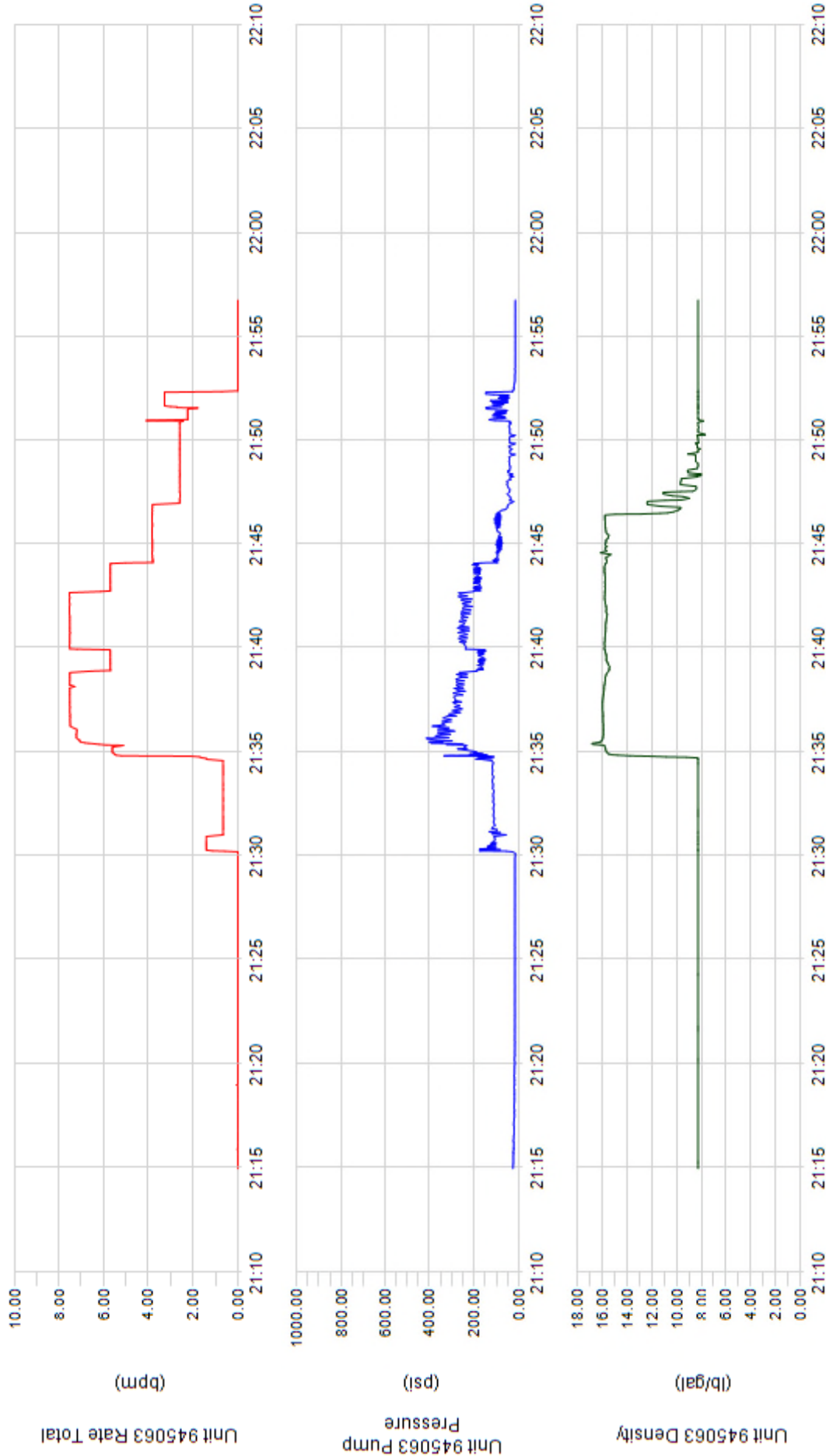
Client
Ticket No. 23030046
Location
Comments PLUG 2

Client Rep
Well Name
Job Type

Jeremy Duty
HANKINS 1
Abandonment Plugs

Supervisor
Unit No.
Service District
Job Date

Jeff Kopp
945063
Brighton Co
03/19/2023

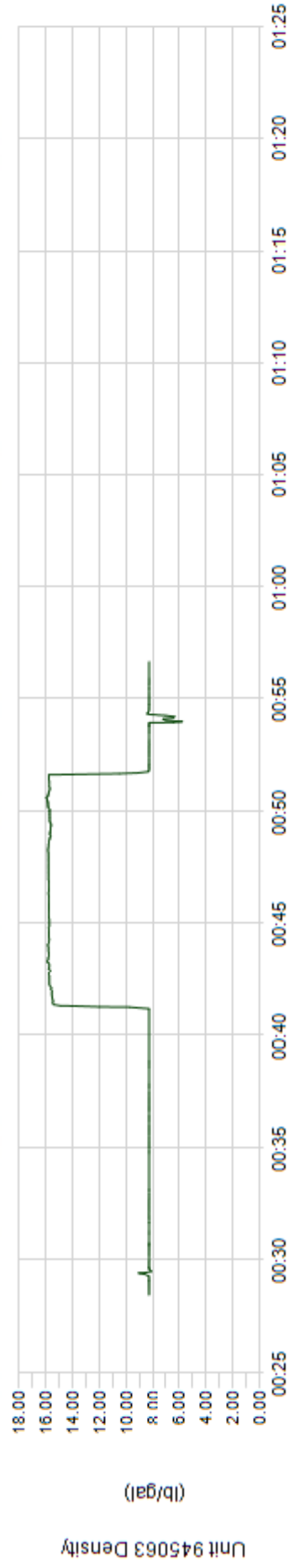
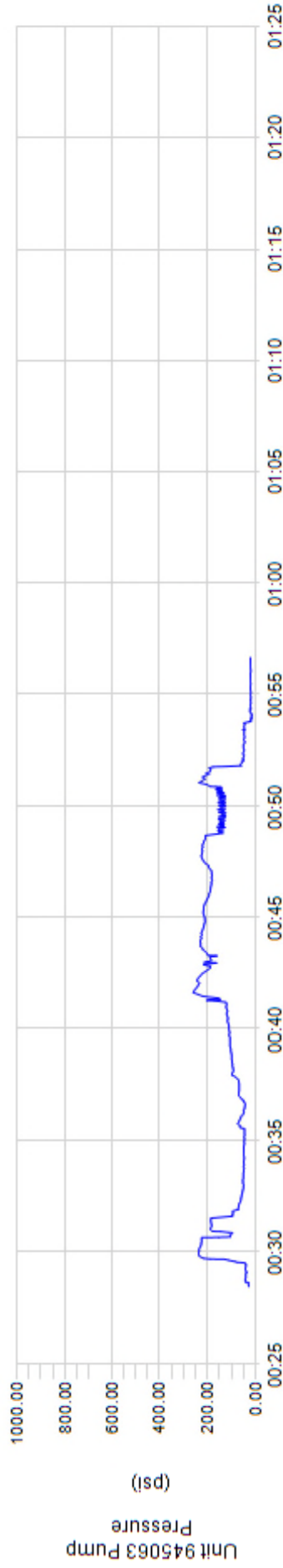
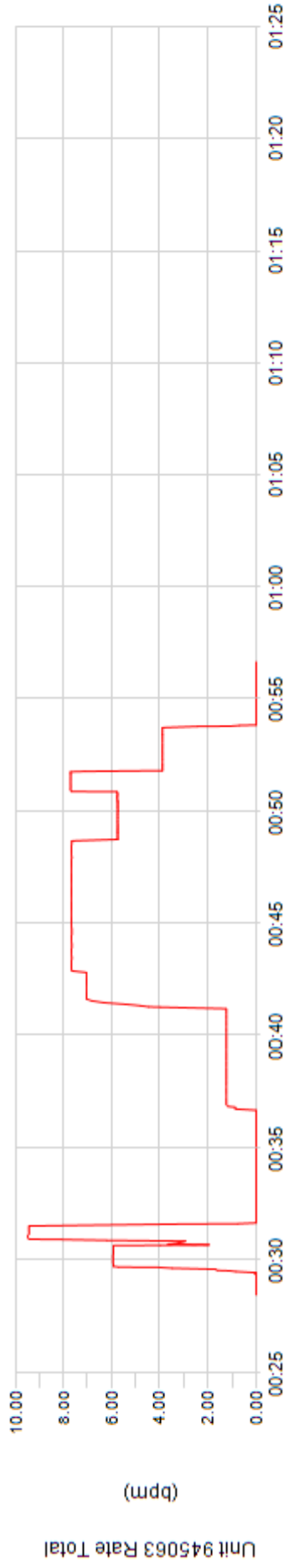




Client OXY
Ticket No. 23030046
Location
Comments PLUG 3

Client Rep Jeremy Duty
Well Name HANKINS 1
Job Type Abandonment Plugs

Supervisor Jeff Kopp
Unit No. 945063
Service District Brighton Co
Job Date 03/20/2023





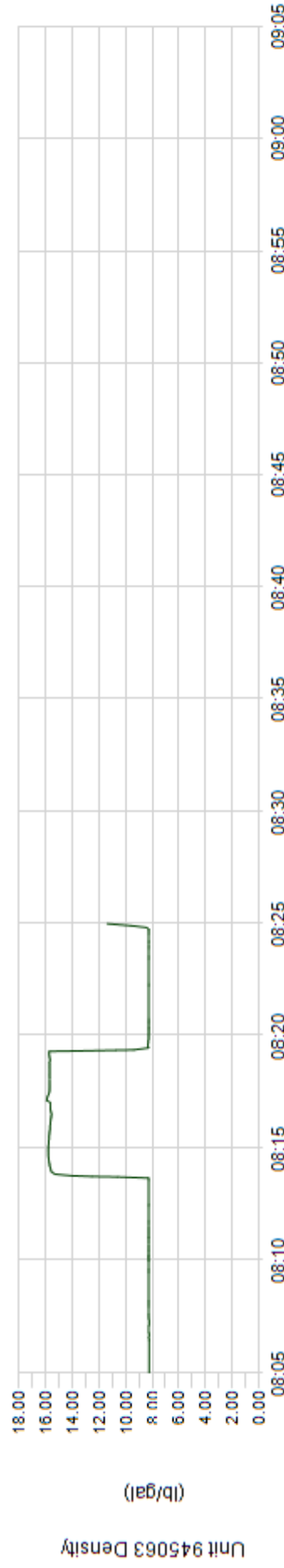
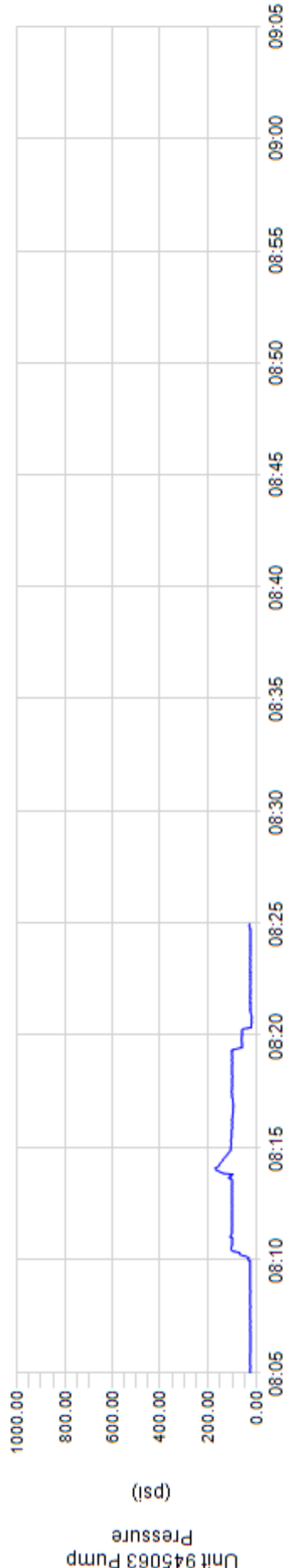
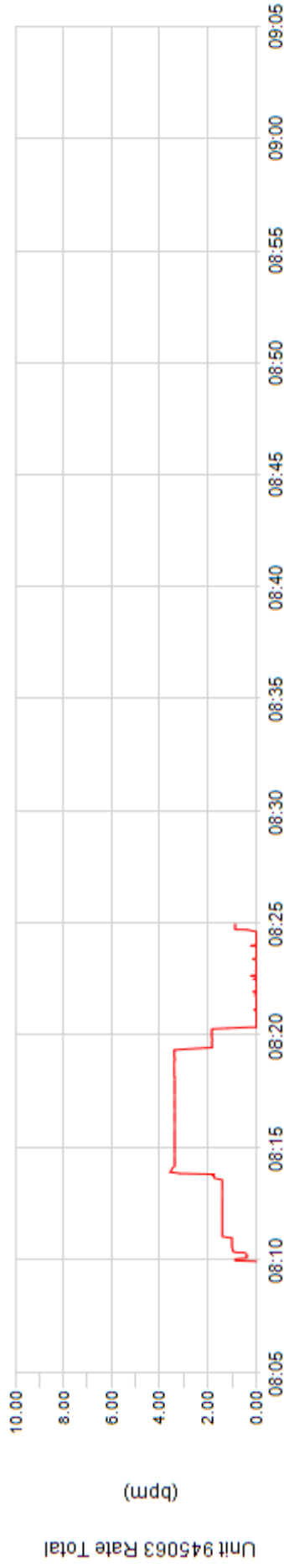
Client
Ticket No. 23030046
Location
Comments PLUG 4

Client Rep
Well Name
Job Type

Jeremy Duty
HANKINS 1
Abandonment Plugs

Supervisor
Unit No.
Service District
Job Date

Jeff Kopp
945063
Brighton Co
03/20/2023





Client OXY
Ticket No. 23030046
Location
Comments PLUG 5 & TOP OFF

Client Rep Jeremy Duty
Well Name HANKINS 1
Job Type Abandonment Plugs

Supervisor Jeff Kopp
Unit No. 945063
Service District Brighton Co
Job Date 03/20/2023

