

CRESTONE PEAK RESOURCES

ARAPAHOE COUNTY

SEC 2-T4S-R65W

PROSPER FARMS 4-65 2-1-6 3CH

OWB

Design: FINAL SURVEY

Standard Survey Report

17 April, 2023

Project: ARAPAHOE COUNTY
 Site: SEC 2-T4S-R65W
 Well: PROSPER FARMS 4-65 2-1-6 3CH
 Wellbore: OWB
 Design: FINAL SURVEY

PROJECT DETAILS: ARAPAHOE COUNTY
 Geodetic System: US State Plane 1983
 Datum: North American Datum 1983
 Ellipsoid: GRS 1980
 Zone: Colorado Central Zone
 System Datum: Mean Sea Level



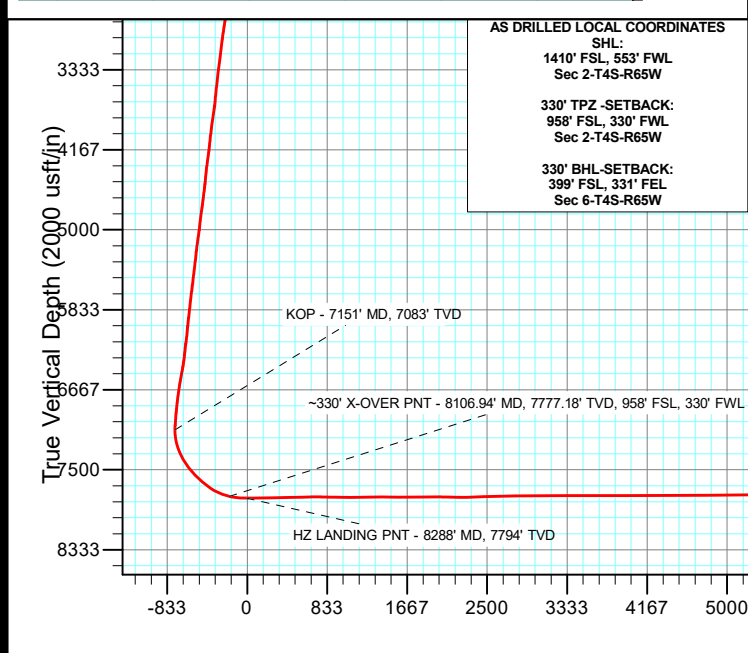
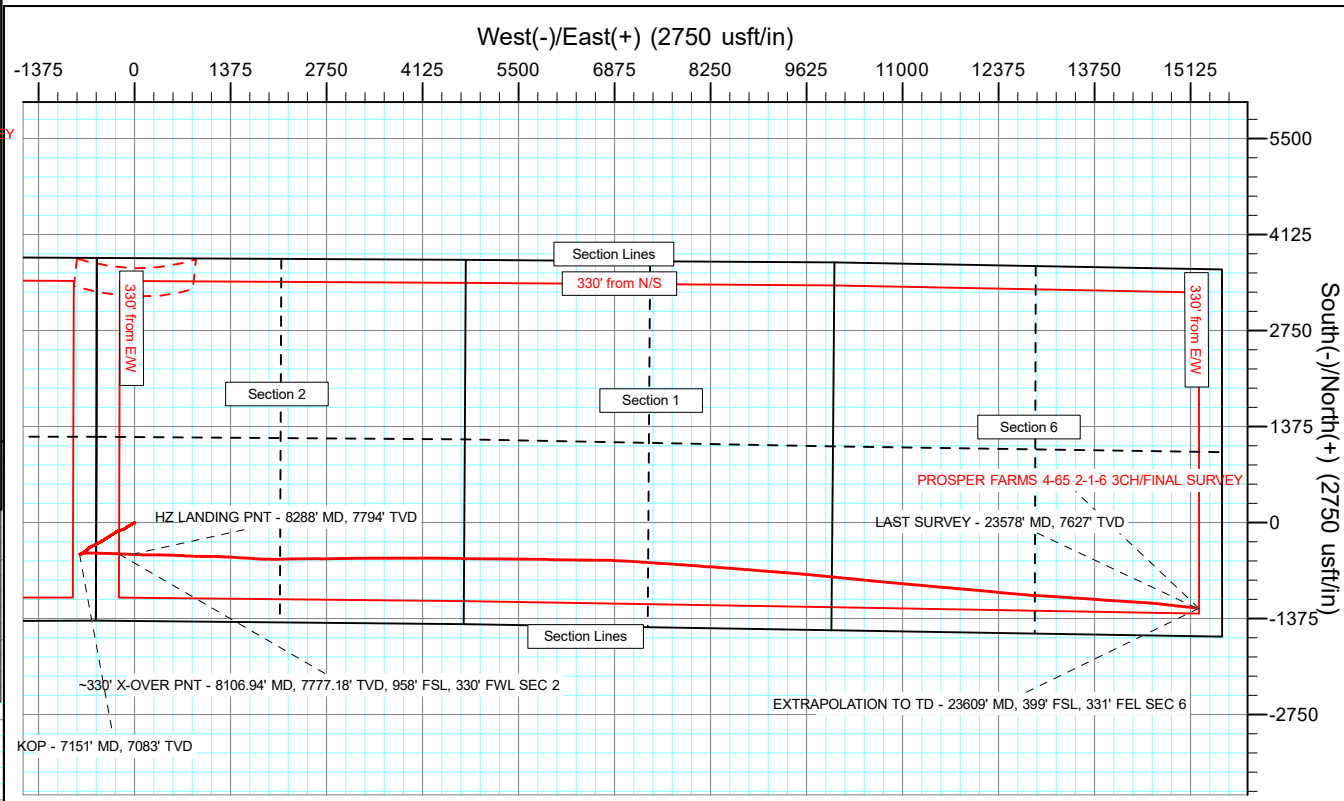
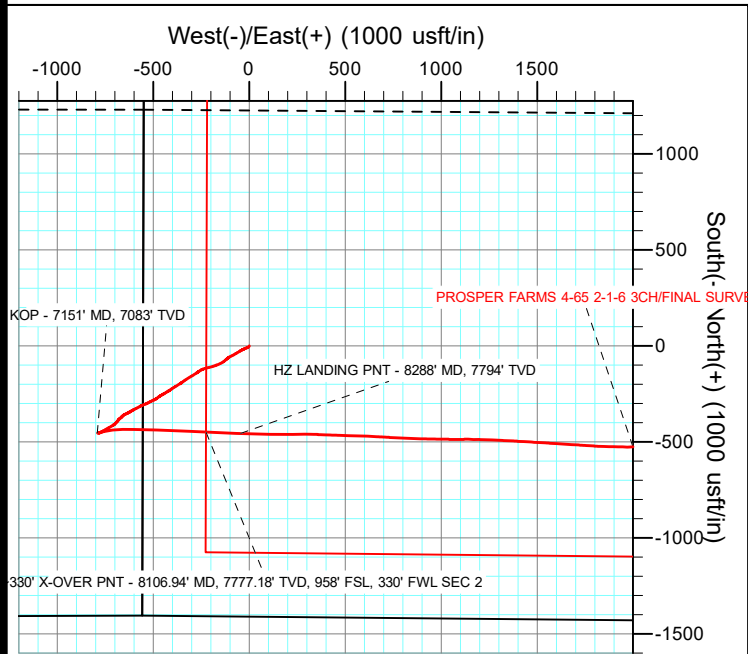
Azimuths to True North
 Magnetic North: 7.53°
 Magnetic Field
 Strength: 51416.1nT
 Dip Angle: 66.06°
 Date: 4/9/2023
 Model: IGRF2020

WELL DETAILS: PROSPER FARMS 4-65 2-1-6 3CH

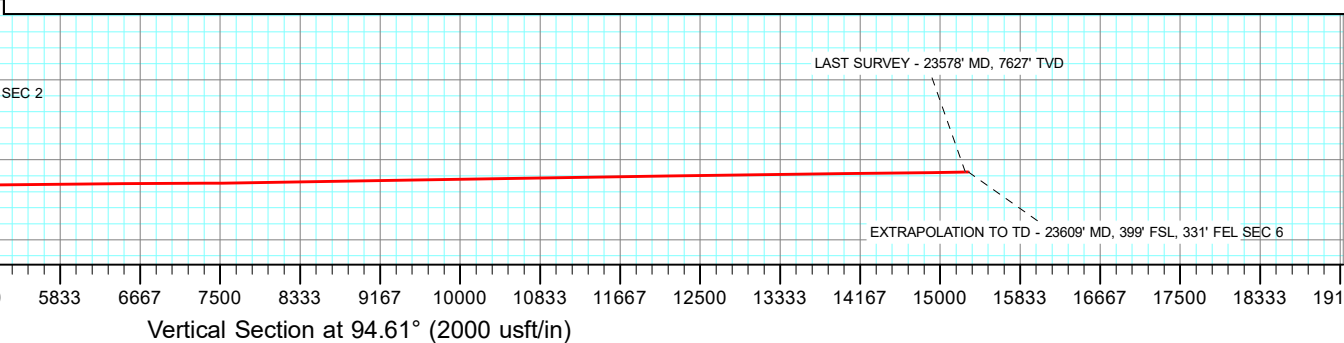
+N/-S	+E/-W	Northing	Easting	Latitude	Longitude	Slot
0.00	0.00	1691740.88	3242234.14	39.729480°N	104.638754°W	

ANNOTATIONS

MD	Inc	Azi	TVD	+N/-S	+E/-W	Vsect	Departure	Annotation
7151.00	1.51	4.74	7083.30	-453.52	-790.32	-751.32	924.16	KOP - 7151' MD, 7083' TVD
8106.94	76.43	93.40	7777.18	-449.17	-224.17	-187.36	1494.50	~330' X-OVER PNT - 8106.94' MD, 7777.18' TVD, 958' FSL, 330' FWL SEC 2
8288.00	89.83	92.04	7794.18	-455.40	-44.54	-7.80	1673.94	HZ LANDING PNT - 8288' MD, 7794' TVD
23578.00	90.84	96.65	7627.15	-1225.14	15212.60	15261.86	16962.21	LAST SURVEY - 23578' MD, 7627' TVD
23609.00	90.84	96.65	7626.70	-1228.73	15243.39	15292.83	16993.20	EXTRAPOLATION TO TD - 23609' MD, 399' FSL, 331' FEL SEC 6



AS DRILLED LOCAL COORDINATES
 SHL:
 1410' FSL, 553' FWL
 Sec 2-T4S-R65W
 330' TPZ -SETBACK:
 958' FSL, 330' FWL
 Sec 2-T4S-R65W
 330' BHL-SETBACK:
 399' FSL, 331' FEL
 Sec 6-T4S-R65W



Survey Report

Company: CRESTONE PEAK RESOURCES	Local Co-ordinate Reference: Well PROSPER FARMS 4-65 2-1-6 3CH
Project: ARAPAHOE COUNTY	TVD Reference: KB 25' @ 5656.71usft
Site: SEC 2-T4S-R65W	MD Reference: KB 25' @ 5656.71usft
Well: PROSPER FARMS 4-65 2-1-6 3CH	North Reference: True
Wellbore: OWB	Survey Calculation Method: Minimum Curvature
Design: FINAL SURVEY	Database: EDT_32Bit_ODBC

Project ARAPAHOE COUNTY		
Map System: US State Plane 1983	System Datum:	Mean Sea Level
Geo Datum: North American Datum 1983		
Map Zone: Colorado Central Zone		Using geodetic scale factor

Site SEC 2-T4S-R65W		
Site Position:	Northing: 1,695,525.07 usft	Latitude: 39.739883°N
From: Lat/Long	Easting: 3,241,656.33 usft	Longitude: 104.640681°W
Position Uncertainty: 0.00 usft	Slot Radius: 13.200 in	Grid Convergence: 0.54 °

Well PROSPER FARMS 4-65 2-1-6 3CH			
Well Position	+N/-S 0.00 usft	Northing: 1,691,740.88 usft	Latitude: 39.729480°N
	+E/-W 0.00 usft	Easting: 3,242,234.15 usft	Longitude: 104.638754°W
Position Uncertainty	0.00 usft	Wellhead Elevation: usft	Ground Level: 5,631.71 usft

Wellbore OWB					
Magnetics	Model Name	Sample Date	Declination (°)	Dip Angle (°)	Field Strength (nT)
	IGRF2020	4/9/2023	7.53	66.06	51,416.14383310

Design FINAL SURVEY				
Audit Notes:				
Version: 1.0	Phase: ACTUAL	Tie On Depth:		0.00
Vertical Section:	Depth From (TVD) (usft)	+N/-S (usft)	+E/-W (usft)	Direction (°)
	0.00	0.00	0.00	94.61

Survey Program		Date 4/17/2023
From (usft)	To (usft)	Survey (Wellbore)
153.00	3,269.00	SURFACE SURVEY (OWB)
3,393.00	23,609.00	FINAL SURVEY (OWB)
		Tool Name
		MWD OWSG
		Description
		OWSG MWD - Standard
		MWD OWSG
		OWSG MWD - Standard

Survey										
Measured Depth (usft)	Inclination (°)	Azimuth (°)	Vertical Depth (usft)	+N/-S (usft)	+E/-W (usft)	Vertical Section (usft)	Dogleg Rate (°/100ft)	Build Rate (°/100ft)	Turn Rate (°/100ft)	
0.00	0.00	0.00	0.00	0.00	0.00	0.00	0.00	0.00	0.00	
153.00	0.50	110.40	153.00	-0.23	0.63	0.64	0.33	0.33	0.00	
245.00	1.00	199.60	244.99	-1.13	0.73	0.82	1.21	0.54	96.96	
350.00	2.20	229.60	349.95	-3.30	-1.11	-0.84	1.36	1.14	28.57	
439.00	2.60	230.40	438.87	-5.69	-3.97	-3.50	0.45	0.45	0.90	
527.00	2.30	243.50	526.79	-7.75	-7.08	-6.44	0.72	-0.34	14.89	
613.00	2.30	251.80	612.72	-9.06	-10.27	-9.51	0.39	0.00	9.65	
700.00	2.70	252.90	699.64	-10.21	-13.88	-13.02	0.46	0.46	1.26	
788.00	3.50	243.20	787.51	-12.03	-18.26	-17.24	1.08	0.91	-11.02	
875.00	3.60	254.00	874.35	-13.98	-23.26	-22.06	0.78	0.11	12.41	

Survey Report

Company:	CRESTONE PEAK RESOURCES	Local Co-ordinate Reference:	Well PROSPER FARMS 4-65 2-1-6 3CH
Project:	ARAPAHOE COUNTY	TVD Reference:	KB 25' @ 5656.71usft
Site:	SEC 2-T4S-R65W	MD Reference:	KB 25' @ 5656.71usft
Well:	PROSPER FARMS 4-65 2-1-6 3CH	North Reference:	True
Wellbore:	OWB	Survey Calculation Method:	Minimum Curvature
Design:	FINAL SURVEY	Database:	EDT_32Bit_ODBC

Survey									
Measured Depth (usft)	Inclination (°)	Azimuth (°)	Vertical Depth (usft)	+N/-S (usft)	+E/-W (usft)	Vertical Section (usft)	Dogleg Rate (°/100ft)	Build Rate (°/100ft)	Turn Rate (°/100ft)
963.00	3.60	240.20	962.17	-16.11	-28.31	-26.93	0.98	0.00	-15.68
1,052.00	4.40	239.90	1,050.96	-19.22	-33.69	-32.04	0.90	0.90	-0.34
1,139.00	5.20	243.40	1,137.65	-22.65	-40.10	-38.15	0.98	0.92	4.02
1,229.00	6.40	240.40	1,227.19	-26.96	-48.11	-45.79	1.37	1.33	-3.33
1,319.00	6.85	239.43	1,316.59	-32.17	-57.10	-54.33	0.52	0.50	-1.08
1,406.00	7.80	238.43	1,402.88	-37.90	-66.59	-63.33	1.10	1.09	-1.15
1,493.00	8.60	240.10	1,488.99	-44.23	-77.26	-73.46	0.96	0.92	1.92
1,580.00	9.50	245.50	1,574.90	-50.45	-89.43	-85.09	1.42	1.03	6.21
1,667.00	9.10	240.90	1,660.76	-56.77	-101.98	-97.09	0.97	-0.46	-5.29
1,755.00	8.20	228.70	1,747.77	-64.30	-112.78	-107.24	2.32	-1.02	-13.86
1,841.00	6.10	229.40	1,833.09	-71.32	-120.85	-114.73	2.44	-2.44	0.81
1,928.00	6.10	229.30	1,919.60	-77.34	-127.87	-121.24	0.01	0.00	-0.11
2,015.00	6.60	235.80	2,006.07	-83.17	-135.51	-128.39	1.01	0.57	7.47
2,103.00	6.76	241.60	2,093.47	-88.48	-144.25	-136.67	0.79	0.18	6.59
2,190.00	7.10	247.30	2,179.84	-92.99	-153.71	-145.74	0.88	0.39	6.55
2,277.00	7.30	249.20	2,266.15	-97.02	-163.84	-155.51	0.36	0.23	2.18
2,364.00	8.40	248.80	2,352.33	-101.28	-174.93	-166.23	1.27	1.26	-0.46
2,451.00	8.60	252.10	2,438.38	-105.58	-187.04	-177.96	0.61	0.23	3.79
2,539.00	8.20	255.90	2,525.44	-109.13	-199.39	-189.98	0.78	-0.45	4.32
2,626.00	8.00	257.20	2,611.57	-111.99	-211.31	-201.63	0.31	-0.23	1.49
2,799.00	9.00	251.30	2,782.67	-118.99	-235.87	-225.55	0.77	0.58	-3.41
2,886.00	10.20	241.70	2,868.45	-124.83	-249.10	-238.27	2.30	1.38	-11.03
2,974.00	10.90	235.00	2,954.97	-133.29	-262.78	-251.22	1.60	0.80	-7.61
3,061.00	8.80	237.00	3,040.68	-141.64	-275.10	-262.83	2.45	-2.41	2.30
3,148.00	8.70	238.10	3,126.67	-148.74	-286.26	-273.39	0.22	-0.11	1.26
3,235.00	8.60	238.40	3,212.68	-155.62	-297.39	-283.93	0.13	-0.11	0.34
3,269.00	8.70	241.40	3,246.29	-158.19	-301.81	-288.13	1.36	0.29	8.82
3,393.00	8.89	237.78	3,368.84	-167.78	-318.15	-303.64	0.47	0.15	-2.92
3,488.00	8.33	235.62	3,462.77	-175.58	-330.04	-314.87	0.68	-0.59	-2.27
3,582.00	7.39	234.51	3,555.88	-182.94	-340.59	-324.79	1.01	-1.00	-1.18
3,677.00	6.44	232.29	3,650.19	-189.74	-349.78	-333.40	1.04	-1.00	-2.34
3,772.00	10.40	240.03	3,744.15	-197.29	-361.42	-344.40	4.33	4.17	8.15
3,867.00	10.46	238.65	3,837.58	-206.06	-376.22	-358.44	0.27	0.06	-1.45
3,962.00	9.32	237.12	3,931.17	-214.72	-390.04	-371.53	1.23	-1.20	-1.61
4,057.00	8.24	235.80	4,025.05	-222.73	-402.13	-382.94	1.16	-1.14	-1.39
4,151.00	6.99	236.43	4,118.22	-229.67	-412.47	-392.68	1.33	-1.33	0.67
4,246.00	10.02	239.24	4,212.17	-237.10	-424.39	-403.97	3.22	3.19	2.96
4,340.00	8.97	239.02	4,304.88	-245.05	-437.70	-416.60	1.12	-1.12	-0.23
4,435.00	7.56	239.90	4,398.89	-252.00	-449.46	-427.76	1.49	-1.48	0.93
4,530.00	6.28	241.54	4,493.19	-257.61	-459.43	-437.25	1.36	-1.35	1.73
4,624.00	9.85	234.36	4,586.25	-264.75	-470.49	-447.70	3.94	3.80	-7.64
4,719.00	8.73	233.43	4,680.00	-273.78	-482.89	-459.33	1.19	-1.18	-0.98
4,814.00	9.59	246.56	4,773.80	-281.22	-495.94	-471.74	2.37	0.91	13.82

Survey Report

Company:	CRESTONE PEAK RESOURCES	Local Co-ordinate Reference:	Well PROSPER FARMS 4-65 2-1-6 3CH
Project:	ARAPAHOE COUNTY	TVD Reference:	KB 25' @ 5656.71usft
Site:	SEC 2-T4S-R65W	MD Reference:	KB 25' @ 5656.71usft
Well:	PROSPER FARMS 4-65 2-1-6 3CH	North Reference:	True
Wellbore:	OWB	Survey Calculation Method:	Minimum Curvature
Design:	FINAL SURVEY	Database:	EDT_32Bit_ODBC

Survey										
Measured Depth (usft)	Inclination (°)	Azimuth (°)	Vertical Depth (usft)	+N/-S (usft)	+E/-W (usft)	Vertical Section (usft)	Dogleg Rate (°/100ft)	Build Rate (°/100ft)	Turn Rate (°/100ft)	
4,909.00	8.20	244.13	4,867.66	-287.33	-509.29	-484.56	1.52	-1.46	-2.56	
5,003.00	7.07	240.79	4,960.82	-293.08	-520.38	-495.15	1.29	-1.20	-3.55	
5,098.00	9.96	246.57	5,054.77	-299.20	-533.02	-507.26	3.17	3.04	6.08	
5,193.00	8.35	248.59	5,148.56	-304.98	-546.98	-520.71	1.73	-1.69	2.13	
5,288.00	6.41	249.06	5,242.76	-309.40	-558.36	-531.69	2.04	-2.04	0.49	
5,382.00	8.16	239.41	5,336.01	-314.67	-569.00	-541.88	2.27	1.86	-10.27	
5,477.00	8.36	242.49	5,430.02	-321.29	-580.93	-553.24	0.51	0.21	3.24	
5,572.00	7.38	243.77	5,524.12	-327.17	-592.53	-564.33	1.05	-1.03	1.35	
5,667.00	9.53	240.49	5,618.09	-333.75	-604.85	-576.08	2.32	2.26	-3.45	
5,761.00	8.14	239.07	5,710.97	-341.00	-617.33	-587.93	1.50	-1.48	-1.51	
5,856.00	6.62	241.54	5,805.18	-347.07	-627.91	-598.00	1.63	-1.60	2.60	
5,950.00	8.29	244.36	5,898.38	-352.58	-638.79	-608.39	1.82	1.78	3.00	
6,045.00	6.10	245.72	5,992.63	-357.62	-649.56	-618.73	2.31	-2.31	1.43	
6,140.00	8.50	223.63	6,086.87	-364.78	-659.01	-627.57	3.84	2.53	-23.25	
6,235.00	11.51	230.79	6,180.42	-375.86	-671.20	-638.83	3.42	3.17	7.54	
6,329.00	10.26	215.58	6,272.74	-388.60	-683.34	-649.91	3.32	-1.33	-16.18	
6,424.00	11.83	225.51	6,365.99	-402.30	-695.22	-660.64	2.59	1.65	10.45	
6,519.00	13.22	240.19	6,458.75	-414.53	-711.59	-675.99	3.64	1.46	15.45	
6,613.00	12.21	239.21	6,550.44	-424.96	-729.46	-692.96	1.10	-1.07	-1.04	
6,708.00	10.46	239.97	6,643.59	-434.42	-745.56	-708.24	1.85	-1.84	0.80	
6,802.00	8.98	240.57	6,736.24	-442.30	-759.33	-721.34	1.58	-1.57	0.64	
6,897.00	7.35	241.25	6,830.27	-448.87	-771.12	-732.56	1.72	-1.72	0.72	
6,992.00	5.56	251.61	6,924.67	-453.24	-780.82	-741.87	2.24	-1.88	10.91	
7,087.00	3.76	273.65	7,019.36	-454.49	-788.29	-749.23	2.64	-1.89	23.20	
7,151.00	1.51	4.74	7,083.30	-453.52	-790.32	-751.32	6.37	-3.51	142.33	
KOP - 7151' MD, 7083' TVD										
7,181.00	2.86	42.79	7,113.28	-452.58	-789.78	-750.86	6.37	4.49	126.84	
7,276.00	13.58	86.14	7,207.22	-450.08	-776.99	-738.32	12.28	11.28	45.63	
7,371.00	20.78	74.02	7,297.95	-444.68	-749.62	-711.47	8.43	7.58	-12.76	
7,465.00	29.26	83.36	7,383.08	-437.42	-710.69	-673.24	9.93	9.02	9.94	
7,560.00	37.46	90.29	7,462.39	-434.87	-658.63	-621.56	9.51	8.63	7.29	
7,655.00	44.00	91.06	7,534.34	-435.63	-596.68	-559.75	6.90	6.88	0.81	
7,750.00	46.61	91.39	7,601.15	-437.08	-529.17	-492.34	2.76	2.75	0.35	
7,844.00	51.34	91.27	7,662.84	-438.72	-458.29	-421.56	5.03	5.03	-0.13	
7,939.00	60.39	91.50	7,716.09	-440.63	-379.77	-343.13	9.53	9.53	0.24	
8,033.00	69.74	93.88	7,755.68	-444.69	-294.73	-258.05	10.21	9.95	2.53	
8,106.94	76.43	93.40	7,777.18	-449.17	-224.17	-187.36	9.06	9.04	-0.65	
~330' X-OVER PNT - 8106.94' MD, 7777.18' TVD, 958' FSL, 330' FWL SEC 2										
8,128.00	78.33	93.27	7,781.79	-450.37	-203.65	-166.81	9.06	9.04	-0.62	
8,223.00	88.09	90.87	7,793.01	-453.75	-109.50	-72.69	10.57	10.27	-2.53	
8,288.00	89.83	92.04	7,794.18	-455.40	-44.54	-7.80	3.23	2.68	1.80	
HZ LANDING PNT - 8288' MD, 7794' TVD										
8,317.00	90.61	92.56	7,794.07	-456.57	-15.56	21.17	3.23	2.68	1.80	
8,412.00	90.40	91.21	7,793.24	-459.69	79.38	116.06	1.44	-0.22	-1.42	

Survey Report

Company:	CRESTONE PEAK RESOURCES	Local Co-ordinate Reference:	Well PROSPER FARMS 4-65 2-1-6 3CH
Project:	ARAPAHOE COUNTY	TVD Reference:	KB 25' @ 5656.71usft
Site:	SEC 2-T4S-R65W	MD Reference:	KB 25' @ 5656.71usft
Well:	PROSPER FARMS 4-65 2-1-6 3CH	North Reference:	True
Wellbore:	OWB	Survey Calculation Method:	Minimum Curvature
Design:	FINAL SURVEY	Database:	EDT_32Bit_ODBC

Survey										
Measured Depth (usft)	Inclination (°)	Azimuth (°)	Vertical Depth (usft)	+N/-S (usft)	+E/-W (usft)	Vertical Section (usft)	Dogleg Rate (°/100ft)	Build Rate (°/100ft)	Turn Rate (°/100ft)	
8,506.00	91.19	90.39	7,791.93	-461.00	173.36	209.84	1.21	0.84	-0.87	
8,601.00	90.79	88.71	7,790.29	-460.26	268.34	304.45	1.82	-0.42	-1.77	
8,696.00	90.34	92.52	7,789.35	-461.28	363.31	399.20	4.04	-0.47	4.01	
8,885.00	92.49	91.40	7,784.69	-467.74	552.13	587.93	1.28	1.14	-0.59	
8,980.00	91.19	93.07	7,781.63	-471.44	647.00	682.79	2.23	-1.37	1.76	
9,074.00	88.20	93.23	7,782.14	-476.61	740.85	776.75	3.19	-3.18	0.17	
9,169.00	88.55	92.20	7,784.83	-481.10	835.70	871.66	1.14	0.37	-1.08	
9,357.00	89.75	90.68	7,787.62	-485.83	1,023.61	1,059.34	1.03	0.64	-0.81	
9,452.00	91.89	89.55	7,786.26	-486.02	1,118.60	1,154.03	2.55	2.25	-1.19	
9,546.00	90.55	92.15	7,784.26	-487.41	1,212.56	1,247.80	3.11	-1.43	2.77	
9,641.00	91.66	92.58	7,782.43	-491.33	1,307.46	1,342.71	1.25	1.17	0.45	
9,735.00	88.53	93.38	7,782.27	-496.22	1,401.32	1,436.65	3.44	-3.33	0.85	
9,830.00	89.24	93.24	7,784.12	-501.70	1,496.14	1,531.61	0.76	0.75	-0.15	
9,924.00	89.96	94.11	7,784.77	-507.73	1,589.94	1,625.60	1.20	0.77	0.93	
10,019.00	90.74	93.38	7,784.19	-513.93	1,684.74	1,720.58	1.12	0.82	-0.77	
10,114.00	91.75	93.85	7,782.13	-519.92	1,779.52	1,815.54	1.17	1.06	0.49	
10,209.00	89.65	91.22	7,780.97	-524.12	1,874.41	1,910.46	3.54	-2.21	-2.77	
10,304.00	89.38	91.42	7,781.77	-526.31	1,969.38	2,005.30	0.35	-0.28	0.21	
10,398.00	88.51	88.08	7,783.50	-525.90	2,063.35	2,098.93	3.67	-0.93	-3.55	
10,493.00	88.44	87.59	7,786.03	-522.31	2,158.25	2,193.24	0.52	-0.07	-0.52	
10,588.00	91.05	89.61	7,786.46	-519.99	2,253.21	2,287.70	3.47	2.75	2.13	
10,683.00	92.16	89.48	7,783.79	-519.24	2,348.16	2,382.29	1.18	1.17	-0.14	
10,777.00	93.59	88.86	7,779.08	-517.88	2,442.03	2,475.75	1.66	1.52	-0.66	
10,872.00	91.76	89.88	7,774.65	-516.84	2,536.92	2,570.24	2.20	-1.93	1.07	
11,015.00	90.23	91.00	7,772.16	-517.93	2,679.89	2,712.84	1.33	-1.07	0.78	
11,110.00	90.46	87.16	7,771.59	-516.41	2,774.85	2,807.37	4.05	0.24	-4.04	
11,204.00	90.23	88.89	7,771.02	-513.17	2,868.79	2,900.75	1.86	-0.24	1.84	
11,298.00	90.53	89.94	7,770.40	-512.21	2,962.78	2,994.36	1.16	0.32	1.12	
11,393.00	89.99	89.83	7,769.97	-512.02	3,057.78	3,089.04	0.58	-0.57	-0.12	
11,488.00	90.37	90.04	7,769.67	-511.91	3,152.78	3,183.72	0.46	0.40	0.22	
11,582.00	90.03	89.45	7,769.34	-511.49	3,246.78	3,277.38	0.72	-0.36	-0.63	
11,677.00	89.98	90.09	7,769.34	-511.11	3,341.78	3,372.04	0.68	-0.05	0.67	
11,771.00	90.07	90.23	7,769.29	-511.37	3,435.78	3,465.76	0.18	0.10	0.15	
11,866.00	89.97	89.88	7,769.26	-511.46	3,530.78	3,560.46	0.38	-0.11	-0.37	
11,960.00	90.20	89.72	7,769.12	-511.14	3,624.78	3,654.13	0.30	0.24	-0.17	
12,055.00	89.96	89.82	7,768.99	-510.76	3,719.78	3,748.79	0.27	-0.25	0.11	
12,150.00	90.10	89.27	7,768.94	-510.00	3,814.77	3,843.42	0.60	0.15	-0.58	
12,245.00	90.08	89.85	7,768.79	-509.27	3,909.77	3,938.05	0.61	-0.02	0.61	
12,340.00	90.13	89.69	7,768.62	-508.89	4,004.77	4,032.71	0.18	0.05	-0.17	
12,434.00	90.18	90.10	7,768.36	-508.72	4,098.77	4,126.39	0.44	0.05	0.44	
12,529.00	89.79	90.48	7,768.39	-509.20	4,193.77	4,221.12	0.57	-0.41	0.40	
12,718.00	90.56	90.37	7,767.81	-510.60	4,382.76	4,409.61	0.41	0.41	-0.06	
12,813.00	90.33	91.17	7,767.07	-511.88	4,477.75	4,504.40	0.88	-0.24	0.84	

Survey Report

Company:	CRESTONE PEAK RESOURCES	Local Co-ordinate Reference:	Well PROSPER FARMS 4-65 2-1-6 3CH
Project:	ARAPAHOE COUNTY	TVD Reference:	KB 25' @ 5656.71usft
Site:	SEC 2-T4S-R65W	MD Reference:	KB 25' @ 5656.71usft
Well:	PROSPER FARMS 4-65 2-1-6 3CH	North Reference:	True
Wellbore:	OWB	Survey Calculation Method:	Minimum Curvature
Design:	FINAL SURVEY	Database:	EDT_32Bit_ODBC

Survey										
Measured Depth (usft)	Inclination (°)	Azimuth (°)	Vertical Depth (usft)	+N/-S (usft)	+E/-W (usft)	Vertical Section (usft)	Dogleg Rate (°/100ft)	Build Rate (°/100ft)	Turn Rate (°/100ft)	
12,908.00	90.46	90.87	7,766.42	-513.57	4,572.73	4,599.21	0.34	0.14	-0.32	
13,003.00	90.44	90.40	7,765.67	-514.62	4,667.72	4,693.98	0.50	-0.02	-0.49	
13,191.00	90.44	90.95	7,764.23	-516.84	4,855.70	4,881.53	0.29	0.00	0.29	
13,286.00	90.62	90.66	7,763.35	-518.17	4,950.69	4,976.31	0.36	0.19	-0.31	
13,380.00	90.67	90.10	7,762.29	-518.79	5,044.68	5,070.05	0.60	0.05	-0.60	
13,475.00	90.93	90.27	7,760.96	-519.10	5,139.67	5,164.76	0.33	0.27	0.18	
13,569.00	90.57	90.50	7,759.73	-519.73	5,233.66	5,258.50	0.45	-0.38	0.24	
13,664.00	90.42	90.91	7,758.91	-520.90	5,328.65	5,353.27	0.46	-0.16	0.43	
13,758.00	90.73	90.75	7,757.97	-522.26	5,422.63	5,447.06	0.37	0.33	-0.17	
13,853.00	90.43	90.57	7,757.01	-523.36	5,517.62	5,541.83	0.37	-0.32	-0.19	
13,948.00	90.28	90.02	7,756.42	-523.85	5,612.62	5,636.56	0.60	-0.16	-0.58	
14,043.00	90.36	91.03	7,755.89	-524.72	5,707.61	5,731.32	1.07	0.08	1.06	
14,137.00	90.11	90.55	7,755.50	-526.01	5,801.60	5,825.11	0.58	-0.27	-0.51	
14,232.00	91.12	91.61	7,754.48	-527.80	5,896.58	5,919.92	1.54	1.06	1.12	
14,327.00	91.08	92.01	7,752.66	-530.80	5,991.51	6,014.79	0.42	-0.04	0.42	
14,421.00	90.36	90.21	7,751.48	-532.62	6,085.48	6,108.60	2.06	-0.77	-1.91	
14,610.00	90.46	91.02	7,750.13	-534.65	6,274.46	6,297.14	0.43	0.05	0.43	
14,705.00	90.41	90.69	7,749.40	-536.07	6,369.45	6,391.93	0.35	-0.05	-0.35	
14,800.00	90.47	90.75	7,748.67	-537.26	6,464.44	6,486.71	0.09	0.06	0.06	
14,894.00	90.42	90.88	7,747.94	-538.60	6,558.43	6,580.50	0.15	-0.05	0.14	
15,083.00	90.26	89.91	7,746.82	-539.90	6,747.42	6,768.98	0.52	-0.08	-0.51	
15,178.00	90.35	91.95	7,746.32	-541.45	6,842.40	6,863.78	2.15	0.09	2.15	
15,273.00	90.37	93.55	7,745.72	-546.00	6,937.28	6,958.73	1.68	0.02	1.68	
15,367.00	90.36	93.67	7,745.12	-551.92	7,031.10	7,052.71	0.13	-0.01	0.13	
15,462.00	90.13	93.18	7,744.71	-557.60	7,125.93	7,147.69	0.57	-0.24	-0.52	
15,556.00	90.46	93.24	7,744.23	-562.86	7,219.78	7,241.66	0.36	0.35	0.06	
15,651.00	90.09	93.95	7,743.77	-568.82	7,314.59	7,336.64	0.84	-0.39	0.75	
15,746.00	90.50	94.26	7,743.29	-575.62	7,409.34	7,431.64	0.54	0.43	0.33	
15,840.00	90.70	93.76	7,742.30	-582.19	7,503.11	7,525.63	0.57	0.21	-0.53	
15,935.00	90.77	93.84	7,741.08	-588.49	7,597.89	7,620.61	0.11	0.07	0.08	
16,029.00	90.80	93.42	7,739.80	-594.44	7,691.69	7,714.59	0.45	0.03	-0.45	
16,124.00	90.76	94.28	7,738.50	-600.81	7,786.47	7,809.57	0.91	-0.04	0.91	
16,219.00	90.78	94.18	7,737.23	-607.82	7,881.20	7,904.56	0.11	0.02	-0.11	
16,314.00	90.83	93.35	7,735.89	-614.06	7,975.99	7,999.54	0.88	0.05	-0.87	
16,408.00	90.97	94.12	7,734.41	-620.18	8,069.77	8,093.51	0.83	0.15	0.82	
16,598.00	91.14	94.13	7,730.92	-633.85	8,259.25	8,283.47	0.09	0.09	0.01	
16,692.00	90.91	94.44	7,729.23	-640.87	8,352.97	8,377.46	0.41	-0.24	0.33	
16,786.00	90.93	94.58	7,727.72	-648.26	8,446.67	8,471.45	0.15	0.02	0.15	
16,880.00	90.94	94.13	7,726.19	-655.40	8,540.38	8,565.43	0.48	0.01	-0.48	
16,975.00	90.86	94.85	7,724.70	-662.83	8,635.08	8,660.42	0.76	-0.08	0.76	
17,070.00	91.01	94.38	7,723.15	-670.47	8,729.76	8,755.41	0.52	0.16	-0.49	
17,165.00	90.69	94.85	7,721.74	-678.12	8,824.44	8,850.40	0.60	-0.34	0.49	
17,259.00	90.94	94.31	7,720.40	-685.62	8,918.13	8,944.39	0.63	0.27	-0.57	

Survey Report

Company:	CRESTONE PEAK RESOURCES	Local Co-ordinate Reference:	Well PROSPER FARMS 4-65 2-1-6 3CH
Project:	ARAPAHOE COUNTY	TVD Reference:	KB 25' @ 5656.71usft
Site:	SEC 2-T4S-R65W	MD Reference:	KB 25' @ 5656.71usft
Well:	PROSPER FARMS 4-65 2-1-6 3CH	North Reference:	True
Wellbore:	OWB	Survey Calculation Method:	Minimum Curvature
Design:	FINAL SURVEY	Database:	EDT_32Bit_ODBC

Survey										
Measured Depth (usft)	Inclination (°)	Azimuth (°)	Vertical Depth (usft)	+N/-S (usft)	+E/-W (usft)	Vertical Section (usft)	Dogleg Rate (°/100ft)	Build Rate (°/100ft)	Turn Rate (°/100ft)	
17,353.00	91.08	94.37	7,718.75	-692.74	9,011.85	9,038.37	0.16	0.15	0.06	
17,448.00	90.98	94.90	7,717.04	-700.41	9,106.52	9,133.35	0.57	-0.11	0.56	
17,542.00	90.81	94.61	7,715.57	-708.20	9,200.19	9,227.34	0.36	-0.18	-0.31	
17,637.00	90.93	94.55	7,714.13	-715.79	9,294.87	9,322.33	0.14	0.13	-0.06	
17,826.00	90.99	94.23	7,710.96	-730.25	9,483.29	9,511.30	0.17	0.03	-0.17	
17,920.00	90.91	95.90	7,709.40	-738.55	9,576.91	9,605.28	1.78	-0.09	1.78	
18,015.00	91.04	95.39	7,707.78	-747.89	9,671.43	9,700.25	0.55	0.14	-0.54	
18,110.00	90.92	95.63	7,706.16	-757.01	9,765.98	9,795.23	0.28	-0.13	0.25	
18,204.00	91.04	95.27	7,704.55	-765.94	9,859.54	9,889.20	0.40	0.13	-0.38	
18,299.00	90.94	96.13	7,702.91	-775.37	9,954.06	9,984.17	0.91	-0.11	0.91	
18,393.00	91.13	95.06	7,701.21	-784.54	10,047.59	10,078.14	1.16	0.20	-1.14	
18,678.00	91.06	95.76	7,695.77	-811.40	10,331.27	10,363.06	0.25	-0.02	0.25	
18,773.00	91.04	95.34	7,694.03	-820.59	10,425.81	10,458.03	0.44	-0.02	-0.44	
18,867.00	91.04	95.67	7,692.32	-829.60	10,519.36	10,552.00	0.35	0.00	0.35	
18,962.00	91.03	95.21	7,690.60	-838.61	10,613.91	10,646.98	0.48	-0.01	-0.48	
19,057.00	91.03	96.08	7,688.90	-847.95	10,708.44	10,741.95	0.92	0.00	0.92	
19,151.00	91.08	95.15	7,687.16	-857.15	10,801.97	10,835.91	0.99	0.05	-0.99	
19,246.00	90.73	95.48	7,685.66	-865.95	10,896.55	10,930.90	0.51	-0.37	0.35	
19,341.00	90.74	94.91	7,684.45	-874.55	10,991.15	11,025.88	0.60	0.01	-0.60	
19,436.00	90.83	94.89	7,683.14	-882.66	11,085.79	11,120.87	0.10	0.09	-0.02	
19,531.00	90.74	95.51	7,681.84	-891.27	11,180.39	11,215.86	0.66	-0.09	0.65	
19,626.00	90.82	95.02	7,680.55	-899.99	11,274.98	11,310.84	0.52	0.08	-0.52	
19,721.00	90.84	95.00	7,679.17	-908.28	11,369.61	11,405.83	0.03	0.02	-0.02	
19,912.00	90.79	95.41	7,676.46	-925.61	11,559.80	11,596.80	0.22	-0.03	0.21	
20,007.00	90.80	94.93	7,675.14	-934.17	11,654.41	11,691.79	0.51	0.01	-0.51	
20,102.00	90.70	94.76	7,673.89	-942.19	11,749.06	11,786.78	0.21	-0.11	-0.18	
20,197.00	90.64	95.15	7,672.78	-950.40	11,843.70	11,881.77	0.42	-0.06	0.41	
20,292.00	90.42	94.75	7,671.91	-958.59	11,938.34	11,976.76	0.48	-0.23	-0.42	
20,386.00	90.98	95.29	7,670.76	-966.82	12,031.97	12,070.75	0.83	0.60	0.57	
20,481.00	90.72	95.75	7,669.35	-975.96	12,126.52	12,165.73	0.56	-0.27	0.48	
20,575.00	91.20	94.96	7,667.77	-984.73	12,220.10	12,259.71	0.98	0.51	-0.84	
20,670.00	90.63	95.91	7,666.26	-993.72	12,314.66	12,354.68	1.17	-0.60	1.00	
20,766.00	90.97	95.04	7,664.91	-1,002.88	12,410.21	12,450.66	0.97	0.35	-0.91	
20,955.00	90.99	95.36	7,661.68	-1,020.01	12,598.40	12,639.62	0.17	0.01	0.17	
21,050.00	91.01	95.32	7,660.02	-1,028.85	12,692.97	12,734.60	0.05	0.02	-0.04	
21,146.00	90.63	94.38	7,658.65	-1,036.96	12,788.62	12,830.59	1.06	-0.40	-0.98	
21,241.00	90.78	93.31	7,657.48	-1,043.33	12,883.40	12,925.57	1.14	0.16	-1.13	
21,335.00	90.52	93.80	7,656.42	-1,049.16	12,977.21	13,019.55	0.59	-0.28	0.52	
21,430.00	90.87	93.72	7,655.26	-1,055.39	13,072.00	13,114.53	0.38	0.37	-0.08	
21,620.00	90.90	93.40	7,652.33	-1,067.19	13,261.61	13,304.48	0.17	0.02	-0.17	
21,715.00	90.84	93.58	7,650.89	-1,072.97	13,356.42	13,399.45	0.20	-0.06	0.19	
21,810.00	90.76	93.27	7,649.56	-1,078.65	13,451.24	13,494.42	0.34	-0.08	-0.33	
21,904.00	90.60	93.56	7,648.44	-1,084.24	13,545.07	13,588.39	0.35	-0.17	0.31	
21,999.00	90.64	94.52	7,647.42	-1,090.94	13,639.83	13,683.38	1.01	0.04	1.01	

Survey Report

Company:	CRESTONE PEAK RESOURCES	Local Co-ordinate Reference:	Well PROSPER FARMS 4-65 2-1-6 3CH
Project:	ARAPAHOE COUNTY	TVD Reference:	KB 25' @ 5656.71usft
Site:	SEC 2-T4S-R65W	MD Reference:	KB 25' @ 5656.71usft
Well:	PROSPER FARMS 4-65 2-1-6 3CH	North Reference:	True
Wellbore:	OWB	Survey Calculation Method:	Minimum Curvature
Design:	FINAL SURVEY	Database:	EDT_32Bit_ODBC

Survey										
Measured Depth (usft)	Inclination (°)	Azimuth (°)	Vertical Depth (usft)	+N/-S (usft)	+E/-W (usft)	Vertical Section (usft)	Dogleg Rate (°/100ft)	Build Rate (°/100ft)	Turn Rate (°/100ft)	
22,094.00	90.79	94.15	7,646.23	-1,098.12	13,734.55	13,778.37	0.42	0.16	-0.39	
22,189.00	90.77	93.75	7,644.94	-1,104.66	13,829.31	13,873.36	0.42	-0.02	-0.42	
22,284.00	90.64	94.06	7,643.77	-1,111.13	13,924.08	13,968.34	0.35	-0.14	0.33	
22,378.00	90.72	94.00	7,642.65	-1,117.74	14,017.85	14,062.33	0.11	0.09	-0.06	
22,474.00	90.70	93.83	7,641.46	-1,124.29	14,113.61	14,158.32	0.18	-0.02	-0.18	
22,568.00	90.85	93.59	7,640.19	-1,130.37	14,207.41	14,252.30	0.30	0.16	-0.26	
22,663.00	90.57	93.48	7,639.01	-1,136.23	14,302.22	14,347.27	0.32	-0.29	-0.12	
22,852.00	90.89	93.67	7,636.61	-1,148.01	14,490.84	14,536.23	0.20	0.17	0.10	
22,947.00	90.56	95.26	7,635.40	-1,155.41	14,585.54	14,631.22	1.71	-0.35	1.67	
23,042.00	90.75	96.32	7,634.32	-1,164.99	14,680.05	14,726.19	1.13	0.20	1.12	
23,136.00	90.67	96.90	7,633.15	-1,175.81	14,773.41	14,820.12	0.62	-0.09	0.62	
23,231.00	90.71	95.84	7,632.01	-1,186.35	14,867.82	14,915.07	1.12	0.04	-1.12	
23,515.00	90.87	96.85	7,628.09	-1,217.73	15,150.05	15,198.91	0.36	0.06	0.36	
23,578.00	90.84	96.65	7,627.15	-1,225.14	15,212.60	15,261.86	0.32	-0.05	-0.32	
LAST SURVEY - 23578' MD, 7627' TVD										
23,609.00	90.84	96.65	7,626.70	-1,228.73	15,243.39	15,292.83	0.00	0.00	0.00	
EXTRAPOLATION TO TD - 23609' MD, 399' FSL, 331' FEL SEC 6										

Design Targets										
Target Name	Dip Angle (°)	Dip Dir. (°)	TVD (usft)	+N/-S (usft)	+E/-W (usft)	Northing (usft)	Easting (usft)	Latitude	Longitude	
PBHL-PROSPER FARM - hit/miss target - Shape	0.00	0.00	7,615.00	-1,227.40	15,244.76	1,690,658.06	3,257,489.79	39.726098°N	104.584556°W	
- actual wellpath misses target center by 11.85usft at 23609.00usft MD (7626.70 TVD, -1228.73 N, 15243.39 E)										
- Point										
LP-PROSPER FARMS 4 - hit/miss target - Shape	0.00	0.00	7,790.00	-477.55	-224.17	1,691,261.23	3,242,014.51	39.728169°N	104.639551°W	
- actual wellpath misses target center by 30.79usft at 8111.35usft MD (7778.20 TVD, -449.43 N, -219.89 E)										
- Point										

Design Annotations					
Measured Depth (usft)	Vertical Depth (usft)	Local Coordinates		Comment	
		+N/-S (usft)	+E/-W (usft)		
7,151.00	7,083.30	-453.52	-790.32	KOP - 7151' MD, 7083' TVD	
8,106.94	7,777.18	-449.17	-224.17	~330' X-OVER PNT - 8106.94' MD, 7777.18' TVD, 958' FSL, 330' FWL SEC 2	
8,288.00	7,794.18	-455.40	-44.54	HZ LANDING PNT - 8288' MD, 7794' TVD	
23,578.00	7,627.15	-1,225.14	15,212.60	LAST SURVEY - 23578' MD, 7627' TVD	
23,609.00	7,626.70	-1,228.73	15,243.39	EXTRAPOLATION TO TD - 23609' MD, 399' FSL, 331' FEL SEC 6	

Checked By: _____ Approved By: _____ Date: _____