

# **CRESTONE PEAK RESOURCES**

**ARAPAHOE COUNTY**

**SEC 2-T4S-R65W**

**PROSPER FARMS 4-65 2-1-6 3AH**

**OWB**

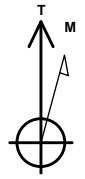
**Design: FINAL SURVEY**

## **Standard Survey Report**

**06 April, 2023**

Project: ARAPAHOE COUNTY  
 Site: SEC 2-T4S-R65W  
 Well: PROSPER FARMS 4-65 2-1-6 3AH  
 Wellbore: OWB  
 Design: FINAL SURVEY

PROJECT DETAILS: ARAPAHOE COUNTY  
 Geodetic System: US State Plane 1983  
 Datum: North American Datum 1983  
 Ellipsoid: GRS 1980  
 Zone: Colorado Central Zone  
 System Datum: Mean Sea Level



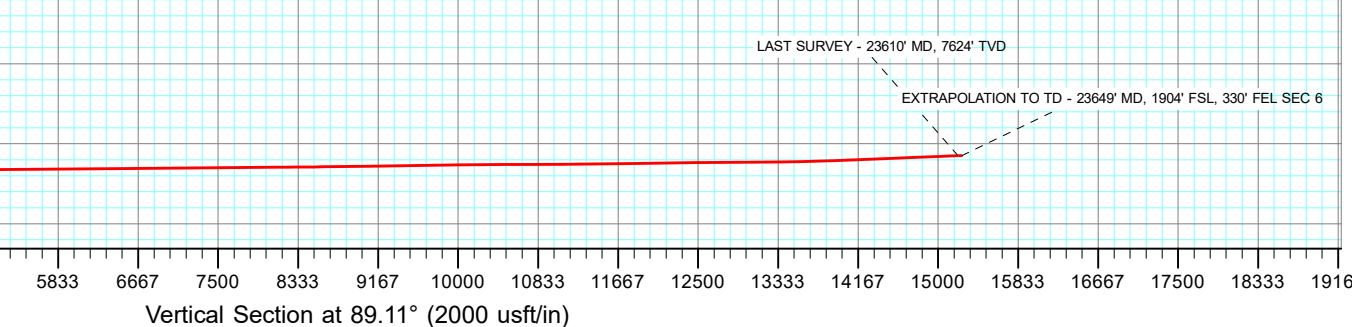
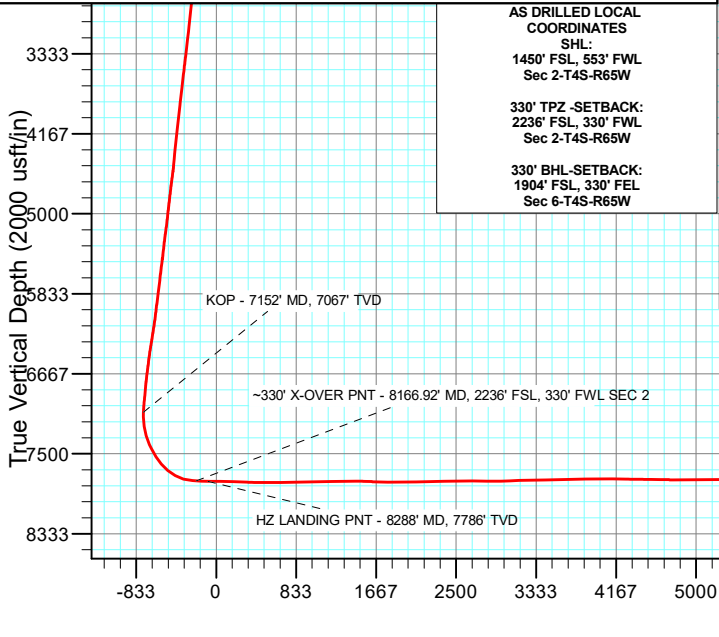
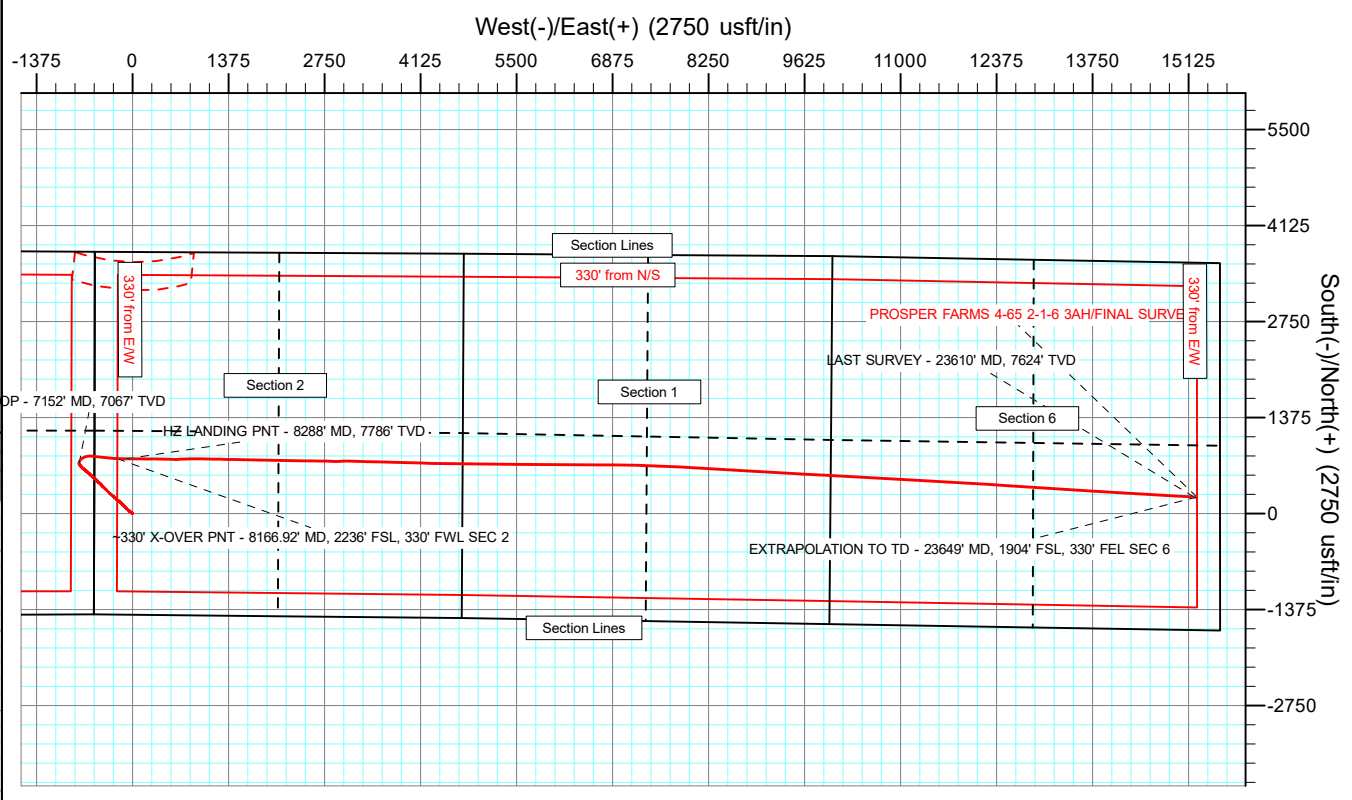
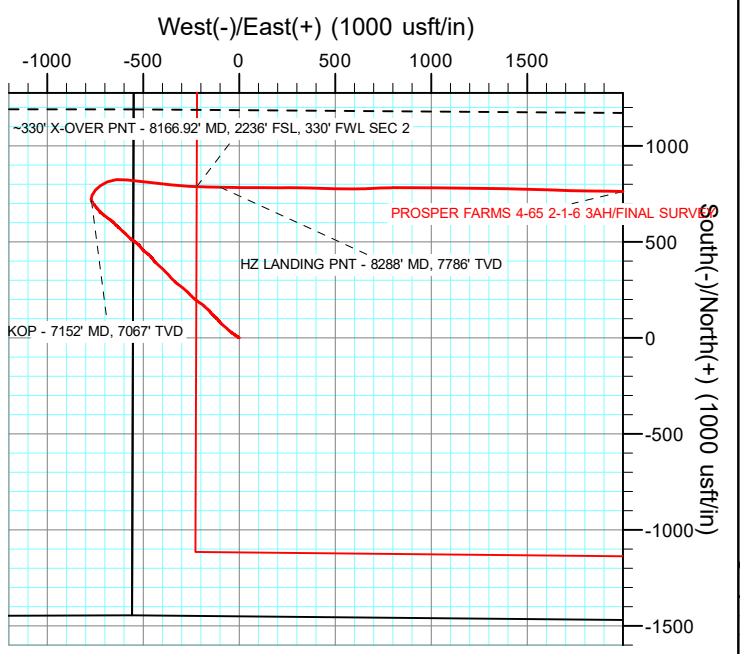
Azimuths to True North  
 Magnetic North: 7.62°  
 Magnetic Field  
 Strength: 51504.1nT  
 Dip Angle: 66.10°  
 Date: 6/9/2022  
 Model: IGRF2020

WELL DETAILS: PROSPER FARMS 4-65 2-1-6 3AH

+N/-S	+E/-W	Northing	Easting	5631.51 Latitude	Longitude	Slot
0.00	0.00	1691780.95	3242234.04	39.729590°N	104.638753°W	

ANNOTATIONS

MD	Inc	Azi	TVD	+N/-S	+E/-W	Vsect	Departure	Annotation
7152.00	9.22	343.09	7066.68	716.59	-769.34	-758.14	1057.59	KOP - 7152' MD, 7067' TVD
8166.92	86.58	91.82	7781.69	788.48	-220.79	-208.55	1663.99	~330' X-OVER PNT - 8166.92' MD, 2236' FSL, 330' FWL SEC 2
8288.00	88.75	91.17	7786.35	785.48	-99.85	-87.66	1784.96	HZ LANDING PNT - 8288' MD, 7786' TVD
23610.00	92.43	93.17	7623.85	238.41	15204.63	15206.50	17103.93	LAST SURVEY - 23610' MD, 7624' TVD
23649.00	92.43	93.17	7622.20	236.26	15243.53	15245.36	17142.90	EXTRAPOLATION TO TD - 23649' MD, 1904' FSL, 330' FEL SEC 6



AS DRILLED LOCAL COORDINATES  
 SHL:  
 1450' FSL, 553' FWL  
 Sec 2-T4S-R65W  
 330' TPZ -SETBACK:  
 2236' FSL, 330' FWL  
 Sec 2-T4S-R65W  
 330' BHL-SETBACK:  
 1904' FSL, 330' FEL  
 Sec 6-T4S-R65W

## Survey Report

<b>Company:</b> CRESTONE PEAK RESOURCES	<b>Local Co-ordinate Reference:</b> Well PROSPER FARMS 4-65 2-1-6 3AH
<b>Project:</b> ARAPAHOE COUNTY	<b>TVD Reference:</b> KB 25' @ 5656.51usft
<b>Site:</b> SEC 2-T4S-R65W	<b>MD Reference:</b> KB 25' @ 5656.51usft
<b>Well:</b> PROSPER FARMS 4-65 2-1-6 3AH	<b>North Reference:</b> True
<b>Wellbore:</b> OWB	<b>Survey Calculation Method:</b> Minimum Curvature
<b>Design:</b> FINAL SURVEY	<b>Database:</b> EDT_32Bit_ODBC

<b>Project</b> ARAPAHOE COUNTY		
<b>Map System:</b> US State Plane 1983	<b>System Datum:</b> Mean Sea Level	
<b>Geo Datum:</b> North American Datum 1983		
<b>Map Zone:</b> Colorado Central Zone	Using geodetic scale factor	

<b>Site</b> SEC 2-T4S-R65W			
<b>Site Position:</b>	<b>Northing:</b> 1,695,525.07 usft	<b>Latitude:</b> 39.739883°N	
<b>From:</b> Lat/Long	<b>Easting:</b> 3,241,656.33 usft	<b>Longitude:</b> 104.640681°W	
<b>Position Uncertainty:</b> 0.00 usft	<b>Slot Radius:</b> 13.200 in	<b>Grid Convergence:</b> 0.54 °	

<b>Well</b> PROSPER FARMS 4-65 2-1-6 3AH					
<b>Well Position</b>	<b>+N/-S</b> 0.00 usft	<b>Northing:</b> 1,691,780.95 usft	<b>Latitude:</b> 39.729590°N		
	<b>+E/-W</b> 0.00 usft	<b>Easting:</b> 3,242,234.05 usft	<b>Longitude:</b> 104.638753°W		
<b>Position Uncertainty</b>	0.00 usft	<b>Wellhead Elevation:</b> usft	<b>Ground Level:</b> 5,631.51 usft		

<b>Wellbore</b> OWB					
<b>Magnetics</b>	<b>Model Name</b>	<b>Sample Date</b>	<b>Declination (°)</b>	<b>Dip Angle (°)</b>	<b>Field Strength (nT)</b>
	IGRF2020	6/9/2022	7.62	66.10	51,504.11070591

<b>Design</b> FINAL SURVEY					
<b>Audit Notes:</b>					
<b>Version:</b> 1.0	<b>Phase:</b> ACTUAL	<b>Tie On Depth:</b> 0.00			
<b>Vertical Section:</b>	<b>Depth From (TVD) (usft)</b>	<b>+N/-S (usft)</b>	<b>+E/-W (usft)</b>	<b>Direction (°)</b>	
	0.00	0.00	0.00	89.11	

<b>Survey Program</b>		<b>Date</b> 4/6/2023
<b>From (usft)</b>	<b>To (usft)</b>	<b>Survey (Wellbore)</b>
154.00	3,303.00	SURFACE SURVEY (OWB)
3,393.00	23,649.00	FINAL SURVEY (OWB)
		<b>Tool Name</b>
		MWD OWSG
		MWD OWSG
		<b>Description</b>
		OWSG MWD - Standard
		OWSG MWD - Standard

<b>Survey</b>										
<b>Measured Depth (usft)</b>	<b>Inclination (°)</b>	<b>Azimuth (°)</b>	<b>Vertical Depth (usft)</b>	<b>+N/-S (usft)</b>	<b>+E/-W (usft)</b>	<b>Vertical Section (usft)</b>	<b>Dogleg Rate (°/100ft)</b>	<b>Build Rate (°/100ft)</b>	<b>Turn Rate (°/100ft)</b>	
0.00	0.00	0.00	0.00	0.00	0.00	0.00	0.00	0.00	0.00	0.00
154.00	1.30	333.40	153.99	1.56	-0.78	-0.76	0.84	0.84	0.00	
245.00	1.20	299.90	244.97	2.96	-2.07	-2.02	0.80	-0.11	-36.81	
350.00	2.00	304.00	349.92	4.53	-4.54	-4.47	0.77	0.76	3.90	
440.00	2.50	304.40	439.85	6.52	-7.46	-7.36	0.56	0.56	0.44	
527.00	2.90	303.40	526.76	8.80	-10.87	-10.73	0.46	0.46	-1.15	
614.00	3.80	305.00	613.61	11.67	-15.07	-14.88	1.04	1.03	1.84	
701.00	5.40	304.60	700.33	15.65	-20.80	-20.55	1.84	1.84	-0.46	
788.00	7.60	304.30	786.76	21.21	-28.92	-28.59	2.53	2.53	-0.34	
875.00	9.40	306.40	872.80	28.67	-39.39	-38.94	2.10	2.07	2.41	

## Survey Report

<b>Company:</b>	CRESTONE PEAK RESOURCES	<b>Local Co-ordinate Reference:</b>	Well PROSPER FARMS 4-65 2-1-6 3AH
<b>Project:</b>	ARAPAHOE COUNTY	<b>TVD Reference:</b>	KB 25' @ 5656.51usft
<b>Site:</b>	SEC 2-T4S-R65W	<b>MD Reference:</b>	KB 25' @ 5656.51usft
<b>Well:</b>	PROSPER FARMS 4-65 2-1-6 3AH	<b>North Reference:</b>	True
<b>Wellbore:</b>	OWB	<b>Survey Calculation Method:</b>	Minimum Curvature
<b>Design:</b>	FINAL SURVEY	<b>Database:</b>	EDT_32Bit_ODBC

Survey									
Measured Depth (usft)	Inclination (°)	Azimuth (°)	Vertical Depth (usft)	+N/-S (usft)	+E/-W (usft)	Vertical Section (usft)	Dogleg Rate (°/100ft)	Build Rate (°/100ft)	Turn Rate (°/100ft)
963.00	10.30	310.70	959.51	38.07	-51.14	-50.55	1.32	1.02	4.89
1,052.00	11.40	311.00	1,046.91	49.03	-63.81	-63.05	1.24	1.24	0.34
1,139.00	13.00	311.00	1,131.95	61.09	-77.69	-76.73	1.84	1.84	0.00
1,229.00	13.70	314.50	1,219.51	75.20	-92.93	-91.75	1.19	0.78	3.89
1,319.00	11.60	322.80	1,307.33	89.88	-106.00	-104.60	3.08	-2.33	9.22
1,406.00	8.80	314.70	1,392.95	101.53	-116.03	-114.44	3.61	-3.22	-9.31
1,493.00	7.80	305.70	1,479.04	109.66	-125.55	-123.84	1.88	-1.15	-10.34
1,580.00	8.40	314.90	1,565.18	117.59	-134.85	-133.01	1.64	0.69	10.57
1,667.00	7.90	321.10	1,651.30	126.73	-143.10	-141.12	1.16	-0.57	7.13
1,755.00	6.90	322.40	1,738.57	135.62	-150.13	-148.01	1.15	-1.14	1.48
1,841.00	7.80	315.30	1,823.86	143.86	-157.38	-155.13	1.48	1.05	-8.26
1,928.00	8.70	311.60	1,909.96	152.43	-166.46	-164.07	1.20	1.03	-4.25
2,016.00	8.80	312.40	1,996.94	161.39	-176.40	-173.88	0.18	0.11	0.91
2,103.00	8.10	308.50	2,082.99	169.69	-186.12	-183.46	1.04	-0.80	-4.48
2,190.00	8.20	305.50	2,169.12	177.11	-195.96	-193.20	0.50	0.11	-3.45
2,277.00	7.50	304.10	2,255.30	183.89	-205.72	-202.84	0.83	-0.80	-1.61
2,364.00	7.40	305.30	2,341.56	190.32	-214.99	-212.02	0.21	-0.11	1.38
2,451.00	7.30	305.60	2,427.85	196.77	-224.06	-220.98	0.12	-0.11	0.34
2,539.00	7.30	310.30	2,515.14	203.64	-232.87	-229.68	0.68	0.00	5.34
2,626.00	7.50	313.60	2,601.41	211.13	-241.19	-237.89	0.54	0.23	3.79
2,713.00	7.90	314.50	2,687.63	219.24	-249.57	-246.14	0.48	0.46	1.03
2,799.00	8.20	319.10	2,772.78	228.02	-257.80	-254.24	0.83	0.35	5.35
2,886.00	7.90	314.80	2,858.93	236.92	-266.11	-262.40	0.77	-0.34	-4.94
2,974.00	8.20	310.20	2,946.06	245.23	-275.19	-271.36	0.81	0.34	-5.23
3,061.00	8.30	310.90	3,032.16	253.35	-284.68	-280.72	0.16	0.11	0.80
3,148.00	8.50	308.40	3,118.23	261.45	-294.46	-290.37	0.48	0.23	-2.87
3,235.00	8.60	308.80	3,204.26	269.52	-304.57	-300.36	0.13	0.11	0.46
3,303.00	8.50	306.80	3,271.50	275.72	-312.56	-308.25	0.46	-0.15	-2.94
3,393.00	8.65	305.89	3,360.50	283.67	-323.37	-318.93	0.22	0.17	-1.01
3,488.00	9.75	315.38	3,454.28	293.59	-334.80	-330.21	1.97	1.16	9.99
3,582.00	9.61	316.95	3,546.94	304.98	-345.75	-340.98	0.32	-0.15	1.67
3,867.00	9.74	316.39	3,827.89	339.82	-378.62	-373.31	0.06	0.05	-0.20
3,962.00	8.73	315.52	3,921.66	350.79	-389.21	-383.73	1.07	-1.06	-0.92
4,151.00	8.97	311.14	4,108.41	370.71	-410.36	-404.57	0.38	0.13	-2.32
4,341.00	7.83	311.64	4,296.37	389.06	-431.19	-425.11	0.60	-0.60	0.26
4,530.00	9.15	327.52	4,483.32	410.29	-448.88	-442.47	1.42	0.70	8.40
4,624.00	11.14	315.43	4,575.85	423.07	-459.27	-452.66	3.09	2.12	-12.86
4,719.00	10.01	310.17	4,669.24	434.93	-472.02	-465.22	1.56	-1.19	-5.54
4,814.00	8.02	305.88	4,763.06	444.15	-483.70	-476.76	2.21	-2.09	-4.52
4,909.00	8.71	310.17	4,857.05	452.67	-494.57	-487.49	0.98	0.73	4.52
5,003.00	10.63	320.14	4,949.72	463.92	-505.56	-498.31	2.70	2.04	10.61
5,098.00	9.28	321.84	5,043.29	476.67	-515.91	-508.46	1.45	-1.42	1.79
5,193.00	11.07	312.13	5,136.80	488.81	-527.41	-519.77	2.60	1.88	-10.22

## Survey Report

<b>Company:</b>	CRESTONE PEAK RESOURCES	<b>Local Co-ordinate Reference:</b>	Well PROSPER FARMS 4-65 2-1-6 3AH
<b>Project:</b>	ARAPAHOE COUNTY	<b>TVD Reference:</b>	KB 25' @ 5656.51usft
<b>Site:</b>	SEC 2-T4S-R65W	<b>MD Reference:</b>	KB 25' @ 5656.51usft
<b>Well:</b>	PROSPER FARMS 4-65 2-1-6 3AH	<b>North Reference:</b>	True
<b>Wellbore:</b>	OWB	<b>Survey Calculation Method:</b>	Minimum Curvature
<b>Design:</b>	FINAL SURVEY	<b>Database:</b>	EDT_32Bit_ODBC

Survey										
Measured Depth (usft)	Inclination (°)	Azimuth (°)	Vertical Depth (usft)	+N/-S (usft)	+E/-W (usft)	Vertical Section (usft)	Dogleg Rate (°/100ft)	Build Rate (°/100ft)	Turn Rate (°/100ft)	
5,288.00	9.25	305.95	5,230.30	499.41	-540.36	-532.55	2.23	-1.92	-6.51	
5,382.00	7.42	300.49	5,323.31	506.93	-551.70	-543.78	2.12	-1.95	-5.81	
5,477.00	8.12	308.59	5,417.44	514.23	-562.24	-554.20	1.37	0.74	8.53	
5,572.00	11.05	314.91	5,511.11	524.84	-573.93	-565.73	3.27	3.08	6.65	
5,667.00	9.96	315.56	5,604.51	537.13	-586.13	-577.74	1.15	-1.15	0.68	
5,761.00	8.47	311.78	5,697.30	547.55	-596.99	-588.43	1.71	-1.59	-4.02	
5,856.00	9.89	312.21	5,791.08	557.69	-608.25	-599.53	1.50	1.49	0.45	
5,951.00	11.01	314.18	5,884.50	569.50	-620.79	-611.89	1.24	1.18	2.07	
6,045.00	8.73	311.69	5,977.10	580.50	-632.56	-623.49	2.47	-2.43	-2.65	
6,140.00	10.11	314.24	6,070.82	591.11	-643.92	-634.68	1.52	1.45	2.68	
6,235.00	12.23	312.42	6,164.02	603.72	-657.32	-647.89	2.26	2.23	-1.92	
6,329.00	10.49	305.38	6,256.18	615.39	-671.65	-662.03	2.36	-1.85	-7.49	
6,424.00	11.97	307.23	6,349.35	626.36	-686.55	-676.76	1.60	1.56	1.95	
6,519.00	10.95	308.52	6,442.46	637.94	-701.45	-691.48	1.11	-1.07	1.36	
6,613.00	9.18	310.05	6,535.01	648.32	-714.18	-704.04	1.90	-1.88	1.63	
6,708.00	11.21	317.17	6,628.51	659.97	-726.26	-715.94	2.51	2.14	7.49	
6,802.00	9.85	318.45	6,720.92	672.69	-737.80	-727.29	1.47	-1.45	1.36	
6,897.00	8.05	323.14	6,814.76	684.10	-747.18	-736.49	2.04	-1.89	4.94	
6,992.00	9.51	322.76	6,908.65	695.67	-755.92	-745.05	1.54	1.54	-0.40	
7,087.00	8.66	323.57	7,002.46	707.67	-764.92	-753.86	0.90	-0.89	0.85	
7,152.00	9.22	343.09	7,066.68	716.59	-769.34	-758.14	4.72	0.86	30.03	
<b>KOP - 7152' MD, 7067' TVD</b>										
7,181.00	9.77	350.69	7,095.28	721.24	-770.41	-759.14	4.72	1.90	26.22	
7,276.00	18.64	22.60	7,187.41	743.29	-765.87	-754.26	12.13	9.34	33.59	
7,371.00	21.24	42.11	7,276.81	770.10	-748.47	-736.45	7.48	2.74	20.54	
7,465.00	22.45	53.41	7,364.10	793.44	-722.63	-710.25	4.65	1.29	12.02	
7,560.00	29.22	66.81	7,449.63	813.43	-686.68	-673.99	9.37	7.13	14.11	
7,655.00	32.45	85.84	7,531.38	824.44	-639.82	-626.97	10.77	3.40	20.03	
7,750.00	40.61	95.79	7,607.72	823.16	-583.50	-570.67	10.59	8.59	10.47	
7,844.00	50.40	96.90	7,673.52	815.71	-516.95	-504.24	10.45	10.41	1.18	
7,938.00	61.37	95.55	7,726.16	807.34	-439.69	-427.13	11.73	11.67	-1.44	
8,033.00	73.88	97.33	7,762.26	797.45	-352.59	-340.19	13.28	13.17	1.87	
8,128.00	85.71	92.14	7,779.07	789.83	-259.60	-247.33	13.56	12.45	-5.46	
8,166.92	86.58	91.82	7,781.69	788.48	-220.79	-208.55	2.38	2.24	-0.81	
<b>-330' X-OVER PNT - 8166.92' MD, 2236' FSL, 330' FWL SEC 2</b>										
8,223.00	87.84	91.37	7,784.42	786.92	-164.80	-152.59	2.38	2.24	-0.81	
8,288.00	88.75	91.17	7,786.35	785.48	-99.85	-87.66	1.44	1.40	-0.31	
<b>HZ LANDING PNT - 8288' MD, 7786' TVD</b>										
8,317.00	89.16	91.08	7,786.88	784.91	-70.86	-58.69	1.44	1.40	-0.31	
8,412.00	90.15	90.43	7,787.45	783.66	24.13	36.27	1.25	1.04	-0.68	
8,506.00	88.54	90.01	7,788.52	783.30	118.12	130.24	1.77	-1.71	-0.45	
8,601.00	88.07	90.48	7,791.33	782.89	213.08	225.18	0.70	-0.49	0.49	
8,696.00	87.03	90.17	7,795.39	782.36	307.99	320.07	1.14	-1.09	-0.33	
8,790.00	88.68	91.64	7,798.91	780.87	401.90	413.96	2.35	1.76	1.56	

## Survey Report

<b>Company:</b>	CRESTONE PEAK RESOURCES	<b>Local Co-ordinate Reference:</b>	Well PROSPER FARMS 4-65 2-1-6 3AH
<b>Project:</b>	ARAPAHOE COUNTY	<b>TVD Reference:</b>	KB 25' @ 5656.51usft
<b>Site:</b>	SEC 2-T4S-R65W	<b>MD Reference:</b>	KB 25' @ 5656.51usft
<b>Well:</b>	PROSPER FARMS 4-65 2-1-6 3AH	<b>North Reference:</b>	True
<b>Wellbore:</b>	OWB	<b>Survey Calculation Method:</b>	Minimum Curvature
<b>Design:</b>	FINAL SURVEY	<b>Database:</b>	EDT_32Bit_ODBC

Survey										
Measured Depth (usft)	Inclination (°)	Azimuth (°)	Vertical Depth (usft)	+N/-S (usft)	+E/-W (usft)	Vertical Section (usft)	Dogleg Rate (°/100ft)	Build Rate (°/100ft)	Turn Rate (°/100ft)	
8,885.00	90.84	91.97	7,799.31	777.88	496.85	508.85	2.30	2.27	0.35	
8,980.00	90.59	89.72	7,798.12	776.48	591.83	603.79	2.38	-0.26	-2.37	
9,074.00	90.69	87.38	7,797.07	778.86	685.78	697.77	2.49	0.11	-2.49	
9,169.00	90.48	88.14	7,796.10	782.57	780.71	792.74	0.83	-0.22	0.80	
9,263.00	90.76	90.87	7,795.09	783.38	874.69	886.72	2.92	0.30	2.90	
9,357.00	91.29	89.18	7,793.41	783.34	968.67	980.69	1.88	0.56	-1.80	
9,452.00	90.81	91.90	7,791.66	782.45	1,063.64	1,075.64	2.91	-0.51	2.86	
9,546.00	91.96	90.55	7,789.39	780.44	1,157.59	1,169.54	1.89	1.22	-1.44	
9,641.00	91.08	91.37	7,786.87	778.84	1,252.54	1,264.46	1.27	-0.93	0.86	
9,735.00	91.66	90.27	7,784.62	777.50	1,346.50	1,358.39	1.32	0.62	-1.17	
9,830.00	89.02	90.31	7,784.06	777.02	1,441.49	1,453.36	2.78	-2.78	0.04	
9,924.00	87.61	92.88	7,786.83	774.40	1,535.40	1,547.22	3.12	-1.50	2.73	
10,019.00	87.80	91.64	7,790.63	770.66	1,630.25	1,642.00	1.32	0.20	-1.31	
10,114.00	88.25	91.78	7,793.90	767.83	1,725.15	1,736.84	0.50	0.47	0.15	
10,209.00	89.35	90.98	7,795.89	765.54	1,820.10	1,831.75	1.43	1.16	-0.84	
10,304.00	90.69	90.64	7,795.86	764.20	1,915.09	1,926.70	1.46	1.41	-0.36	
10,398.00	92.13	89.65	7,793.55	763.96	2,009.06	2,020.65	1.86	1.53	-1.05	
10,493.00	90.59	90.98	7,791.29	763.44	2,104.02	2,115.60	2.14	-1.62	1.40	
10,588.00	91.24	91.29	7,789.78	761.56	2,198.99	2,210.53	0.76	0.68	0.33	
10,683.00	92.53	90.51	7,786.65	760.06	2,293.93	2,305.43	1.59	1.36	-0.82	
10,777.00	89.77	92.04	7,784.76	757.97	2,387.87	2,399.33	3.36	-2.94	1.63	
10,872.00	90.06	91.72	7,784.90	754.86	2,482.82	2,494.22	0.45	0.31	-0.34	
10,967.00	91.67	89.86	7,783.47	753.55	2,577.79	2,589.16	2.59	1.69	-1.96	
11,062.00	89.10	91.18	7,782.83	752.68	2,672.78	2,684.12	3.04	-2.71	1.39	
11,156.00	88.98	90.91	7,784.41	750.97	2,766.75	2,778.05	0.31	-0.13	-0.29	
11,250.00	89.58	90.70	7,785.59	749.65	2,860.73	2,872.00	0.68	0.64	-0.22	
11,345.00	91.33	89.52	7,784.83	749.47	2,955.72	2,966.98	2.22	1.84	-1.24	
11,439.00	93.23	89.49	7,781.09	750.28	3,049.64	3,060.90	2.02	2.02	-0.03	
11,534.00	91.19	90.11	7,777.43	750.61	3,144.56	3,155.82	2.24	-2.15	0.65	
11,628.00	90.03	92.54	7,776.43	748.44	3,238.52	3,249.73	2.86	-1.23	2.59	
11,723.00	91.65	92.18	7,775.04	744.52	3,333.43	3,344.57	1.75	1.71	-0.38	
11,817.00	92.90	90.84	7,771.31	742.05	3,427.32	3,438.41	1.95	1.33	-1.43	
11,912.00	89.75	91.92	7,769.11	739.76	3,522.25	3,533.29	3.51	-3.32	1.14	
12,007.00	91.06	90.60	7,768.44	737.67	3,617.22	3,628.22	1.96	1.38	-1.39	
12,150.00	92.77	91.23	7,763.66	735.39	3,760.12	3,771.06	1.27	1.20	0.44	
12,245.00	91.24	91.49	7,760.34	733.14	3,855.03	3,865.93	1.63	-1.61	0.27	
12,339.00	89.19	91.96	7,759.98	730.31	3,948.98	3,959.83	2.24	-2.18	0.50	
12,434.00	89.35	91.79	7,761.19	727.20	4,043.92	4,054.71	0.25	0.17	-0.18	
12,528.00	89.26	91.66	7,762.33	724.37	4,137.87	4,148.60	0.17	-0.10	-0.14	
12,623.00	89.49	91.61	7,763.37	721.66	4,232.83	4,243.51	0.25	0.24	-0.05	
12,718.00	89.19	91.81	7,764.46	718.83	4,327.78	4,338.40	0.38	-0.32	0.21	
12,813.00	89.22	91.59	7,765.78	716.01	4,422.73	4,433.30	0.23	0.03	-0.23	
12,908.00	89.10	90.62	7,767.18	714.18	4,517.70	4,528.23	1.03	-0.13	-1.02	

## Survey Report

<b>Company:</b>	CRESTONE PEAK RESOURCES	<b>Local Co-ordinate Reference:</b>	Well PROSPER FARMS 4-65 2-1-6 3AH
<b>Project:</b>	ARAPAHOE COUNTY	<b>TVD Reference:</b>	KB 25' @ 5656.51usft
<b>Site:</b>	SEC 2-T4S-R65W	<b>MD Reference:</b>	KB 25' @ 5656.51usft
<b>Well:</b>	PROSPER FARMS 4-65 2-1-6 3AH	<b>North Reference:</b>	True
<b>Wellbore:</b>	OWB	<b>Survey Calculation Method:</b>	Minimum Curvature
<b>Design:</b>	FINAL SURVEY	<b>Database:</b>	EDT_32Bit_ODBC

Survey										
Measured Depth (usft)	Inclination (°)	Azimuth (°)	Vertical Depth (usft)	+N/-S (usft)	+E/-W (usft)	Vertical Section (usft)	Dogleg Rate (°/100ft)	Build Rate (°/100ft)	Turn Rate (°/100ft)	
13,002.00	89.17	90.81	7,768.59	713.00	4,611.68	4,622.18	0.22	0.07	0.20	
13,096.00	89.13	90.65	7,769.99	711.81	4,705.67	4,716.13	0.18	-0.04	-0.17	
13,191.00	90.31	90.29	7,770.45	711.03	4,800.66	4,811.10	1.30	1.24	-0.38	
13,380.00	90.42	90.29	7,769.25	710.07	4,989.65	5,000.06	0.06	0.06	0.00	
13,474.00	90.06	90.54	7,768.86	709.39	5,083.65	5,094.03	0.47	-0.38	0.27	
13,569.00	90.17	90.42	7,768.66	708.59	5,178.65	5,189.00	0.17	0.12	-0.13	
13,664.00	90.60	90.40	7,768.03	707.91	5,273.64	5,283.98	0.45	0.45	-0.02	
13,758.00	90.74	90.44	7,766.93	707.22	5,367.63	5,377.95	0.15	0.15	0.04	
13,853.00	90.36	90.73	7,766.02	706.25	5,462.62	5,472.91	0.50	-0.40	0.31	
13,947.00	90.55	90.39	7,765.27	705.34	5,556.61	5,566.88	0.41	0.20	-0.36	
14,042.00	90.49	90.21	7,764.41	704.84	5,651.61	5,661.85	0.20	-0.06	-0.19	
14,137.00	90.53	90.51	7,763.56	704.24	5,746.60	5,756.83	0.32	0.04	0.32	
14,232.00	90.41	90.32	7,762.78	703.55	5,841.60	5,851.80	0.24	-0.13	-0.20	
14,326.00	90.44	90.04	7,762.08	703.26	5,935.59	5,945.78	0.30	0.03	-0.30	
14,421.00	90.41	90.37	7,761.38	702.92	6,030.59	6,040.76	0.35	-0.03	0.35	
14,515.00	90.48	90.61	7,760.65	702.11	6,124.59	6,134.73	0.27	0.07	0.26	
14,610.00	90.40	90.01	7,759.92	701.60	6,219.58	6,229.71	0.64	-0.08	-0.63	
14,705.00	90.28	90.76	7,759.36	700.96	6,314.58	6,324.68	0.80	-0.13	0.79	
14,799.00	90.73	91.42	7,758.53	699.17	6,408.55	6,418.62	0.85	0.48	0.70	
14,894.00	90.51	90.33	7,757.50	697.72	6,503.54	6,513.57	1.17	-0.23	-1.15	
14,988.00	90.65	90.53	7,756.55	697.02	6,597.53	6,607.54	0.26	0.15	0.21	
15,083.00	90.16	89.81	7,755.88	696.74	6,692.53	6,702.52	0.92	-0.52	-0.76	
15,178.00	90.54	90.49	7,755.30	696.49	6,787.52	6,797.50	0.82	0.40	0.72	
15,272.00	90.32	90.47	7,754.59	695.70	6,881.52	6,891.47	0.24	-0.23	-0.02	
15,367.00	90.42	90.59	7,753.98	694.82	6,976.51	6,986.44	0.16	0.11	0.13	
15,461.00	90.50	90.56	7,753.22	693.88	7,070.50	7,080.41	0.09	0.09	-0.03	
15,556.00	90.45	90.39	7,752.44	693.09	7,165.50	7,175.38	0.19	-0.05	-0.18	
15,651.00	90.55	90.49	7,751.61	692.36	7,260.49	7,270.35	0.15	0.11	0.11	
15,745.00	90.42	91.08	7,750.81	691.07	7,354.48	7,364.30	0.64	-0.14	0.63	
15,840.00	90.72	93.20	7,749.87	687.53	7,449.40	7,459.16	2.25	0.32	2.23	
15,934.00	90.76	93.10	7,748.65	682.36	7,543.25	7,552.92	0.11	0.04	-0.11	
16,029.00	90.66	92.99	7,747.47	677.31	7,638.11	7,647.69	0.16	-0.11	-0.12	
16,124.00	90.46	93.00	7,746.55	672.35	7,732.97	7,742.47	0.21	-0.21	0.01	
16,219.00	90.44	92.86	7,745.80	667.50	7,827.85	7,837.25	0.15	-0.02	-0.15	
16,313.00	90.70	93.17	7,744.86	662.55	7,921.71	7,931.03	0.43	0.28	0.33	
16,408.00	90.56	92.94	7,743.82	657.49	8,016.57	8,025.80	0.28	-0.15	-0.24	
16,502.00	90.25	93.02	7,743.16	652.60	8,110.44	8,119.58	0.34	-0.33	0.09	
16,597.00	90.52	93.52	7,742.52	647.18	8,205.29	8,214.33	0.60	0.28	0.53	
16,692.00	90.42	93.40	7,741.74	641.45	8,300.11	8,309.05	0.16	-0.11	-0.13	
16,786.00	90.48	93.57	7,741.00	635.74	8,393.93	8,402.78	0.19	0.06	0.18	
16,880.00	90.56	93.00	7,740.15	630.35	8,487.77	8,496.52	0.61	0.09	-0.61	
16,975.00	90.73	92.96	7,739.08	625.41	8,582.64	8,591.30	0.18	0.18	-0.04	
17,070.00	90.69	93.18	7,737.90	620.32	8,677.50	8,686.07	0.24	-0.04	0.23	

## Survey Report

<b>Company:</b>	CRESTONE PEAK RESOURCES	<b>Local Co-ordinate Reference:</b>	Well PROSPER FARMS 4-65 2-1-6 3AH
<b>Project:</b>	ARAPAHOE COUNTY	<b>TVD Reference:</b>	KB 25' @ 5656.51usft
<b>Site:</b>	SEC 2-T4S-R65W	<b>MD Reference:</b>	KB 25' @ 5656.51usft
<b>Well:</b>	PROSPER FARMS 4-65 2-1-6 3AH	<b>North Reference:</b>	True
<b>Wellbore:</b>	OWB	<b>Survey Calculation Method:</b>	Minimum Curvature
<b>Design:</b>	FINAL SURVEY	<b>Database:</b>	EDT_32Bit_ODBC

Survey										
Measured Depth (usft)	Inclination (°)	Azimuth (°)	Vertical Depth (usft)	+N/-S (usft)	+E/-W (usft)	Vertical Section (usft)	Dogleg Rate (°/100ft)	Build Rate (°/100ft)	Turn Rate (°/100ft)	
17,164.00	90.73	93.33	7,736.73	614.99	8,771.34	8,779.81	0.17	0.04	0.16	
17,353.00	90.73	93.38	7,734.33	603.93	8,960.00	8,968.28	0.03	0.00	0.03	
17,448.00	90.89	93.02	7,732.98	598.63	9,054.84	9,063.03	0.41	0.17	-0.38	
17,636.00	90.91	93.17	7,730.03	588.48	9,242.54	9,250.55	0.08	0.01	0.08	
17,826.00	90.93	93.95	7,726.98	576.68	9,432.15	9,439.95	0.41	0.01	0.41	
18,015.00	90.56	92.83	7,724.52	565.50	9,620.80	9,628.41	0.62	-0.20	-0.59	
18,110.00	90.91	93.36	7,723.30	560.38	9,715.65	9,723.17	0.67	0.37	0.56	
18,204.00	90.65	93.05	7,722.02	555.12	9,809.50	9,816.92	0.43	-0.28	-0.33	
18,298.00	90.98	93.11	7,720.69	550.07	9,903.35	9,910.69	0.36	0.35	0.06	
18,393.00	90.64	93.25	7,719.34	544.80	9,998.20	10,005.44	0.39	-0.36	0.15	
18,488.00	90.67	92.96	7,718.26	539.66	10,093.05	10,100.20	0.31	0.03	-0.31	
18,583.00	90.76	93.29	7,717.07	534.48	10,187.90	10,194.96	0.36	0.09	0.35	
18,677.00	90.22	92.79	7,716.27	529.49	10,281.76	10,288.74	0.78	-0.57	-0.53	
18,772.00	90.37	93.01	7,715.78	524.69	10,376.64	10,383.53	0.28	0.16	0.23	
18,867.00	90.27	93.12	7,715.25	519.61	10,471.50	10,478.30	0.16	-0.11	0.12	
18,962.00	90.15	93.20	7,714.90	514.37	10,566.36	10,573.06	0.15	-0.13	0.08	
19,056.00	90.06	93.19	7,714.73	509.13	10,660.21	10,666.82	0.10	-0.10	-0.01	
19,151.00	90.25	93.43	7,714.47	503.65	10,755.05	10,761.57	0.32	0.20	0.25	
19,246.00	90.15	93.26	7,714.14	498.10	10,849.89	10,856.31	0.21	-0.11	-0.18	
19,340.00	90.30	93.18	7,713.77	492.82	10,943.74	10,950.06	0.18	0.16	-0.09	
19,436.00	90.25	92.89	7,713.31	487.74	11,039.61	11,045.84	0.31	-0.05	-0.30	
19,531.00	90.24	93.08	7,712.90	482.79	11,134.48	11,140.62	0.20	-0.01	0.20	
19,626.00	90.42	93.01	7,712.36	477.75	11,229.34	11,235.40	0.20	0.19	-0.07	
19,721.00	91.02	93.45	7,711.16	472.40	11,324.18	11,330.14	0.78	0.63	0.46	
19,816.00	90.86	93.56	7,709.60	466.59	11,418.99	11,424.85	0.20	-0.17	0.12	
19,911.00	90.60	92.96	7,708.39	461.19	11,513.83	11,519.59	0.69	-0.27	-0.63	
20,006.00	90.72	92.94	7,707.30	456.30	11,608.70	11,614.37	0.13	0.13	-0.02	
20,101.00	90.69	93.22	7,706.13	451.19	11,703.55	11,709.14	0.30	-0.03	0.29	
20,196.00	90.62	92.91	7,705.05	446.11	11,798.41	11,803.91	0.33	-0.07	-0.33	
20,291.00	90.60	93.50	7,704.03	440.80	11,893.26	11,898.66	0.62	-0.02	0.62	
20,386.00	90.69	93.75	7,702.96	434.80	11,988.06	11,993.36	0.28	0.09	0.26	
20,481.00	90.98	93.38	7,701.58	428.89	12,082.87	12,088.06	0.49	0.31	-0.39	
20,670.00	90.90	93.53	7,698.48	417.50	12,271.50	12,276.49	0.09	-0.04	0.08	
20,765.00	90.76	93.57	7,697.10	411.62	12,366.30	12,371.20	0.15	-0.15	0.04	
20,860.00	90.86	94.09	7,695.76	405.28	12,461.08	12,465.87	0.56	0.11	0.55	
20,955.00	90.76	93.56	7,694.42	398.94	12,555.86	12,560.54	0.57	-0.11	-0.56	
21,145.00	90.44	93.69	7,692.43	386.93	12,745.47	12,749.94	0.18	-0.17	0.07	
21,240.00	90.20	93.80	7,691.90	380.72	12,840.27	12,844.62	0.28	-0.25	0.12	
21,335.00	90.38	93.53	7,691.42	374.65	12,935.07	12,939.32	0.34	0.19	-0.28	
21,430.00	90.21	93.44	7,690.93	368.87	13,029.89	13,034.04	0.20	-0.18	-0.09	
21,525.00	90.25	93.39	7,690.55	363.22	13,124.72	13,128.78	0.07	0.04	-0.05	
21,619.00	90.24	93.56	7,690.14	357.52	13,218.55	13,222.50	0.18	-0.01	0.18	
21,714.00	90.20	93.96	7,689.78	351.29	13,313.34	13,317.19	0.42	-0.04	0.42	
21,809.00	89.63	95.22	7,689.92	343.69	13,408.04	13,411.75	1.46	-0.60	1.33	

## Survey Report

<b>Company:</b>	CRESTONE PEAK RESOURCES	<b>Local Co-ordinate Reference:</b>	Well PROSPER FARMS 4-65 2-1-6 3AH
<b>Project:</b>	ARAPAHOE COUNTY	<b>TVD Reference:</b>	KB 25' @ 5656.51usft
<b>Site:</b>	SEC 2-T4S-R65W	<b>MD Reference:</b>	KB 25' @ 5656.51usft
<b>Well:</b>	PROSPER FARMS 4-65 2-1-6 3AH	<b>North Reference:</b>	True
<b>Wellbore:</b>	OWB	<b>Survey Calculation Method:</b>	Minimum Curvature
<b>Design:</b>	FINAL SURVEY	<b>Database:</b>	EDT_32Bit_ODBC

Survey										
Measured Depth (usft)	Inclination (°)	Azimuth (°)	Vertical Depth (usft)	+N/-S (usft)	+E/-W (usft)	Vertical Section (usft)	Dogleg Rate (°/100ft)	Build Rate (°/100ft)	Turn Rate (°/100ft)	
21,904.00	91.09	94.72	7,689.32	335.46	13,502.68	13,506.25	1.62	1.54	-0.53	
21,999.00	92.22	93.02	7,686.58	329.05	13,597.41	13,600.88	2.15	1.19	-1.79	
22,093.00	92.29	92.93	7,682.88	324.17	13,691.21	13,694.59	0.12	0.07	-0.10	
22,188.00	91.86	93.53	7,679.44	318.82	13,786.00	13,789.29	0.78	-0.45	0.63	
22,283.00	92.34	93.06	7,675.96	313.37	13,880.78	13,883.97	0.71	0.51	-0.49	
22,378.00	92.33	93.47	7,672.09	307.96	13,975.55	13,978.64	0.43	-0.01	0.43	
22,473.00	92.10	93.56	7,668.42	302.14	14,070.30	14,073.29	0.26	-0.24	0.09	
22,568.00	92.19	93.21	7,664.86	296.53	14,165.06	14,167.96	0.38	0.09	-0.37	
22,663.00	92.13	93.49	7,661.28	290.99	14,259.83	14,262.63	0.30	-0.06	0.29	
22,757.00	92.20	93.14	7,657.73	285.56	14,353.61	14,356.31	0.38	0.07	-0.37	
22,852.00	92.22	93.13	7,654.07	280.36	14,448.40	14,451.01	0.02	0.02	-0.01	
22,947.00	92.40	93.61	7,650.24	274.78	14,543.16	14,545.67	0.54	0.19	0.51	
23,041.00	92.25	93.13	7,646.42	269.26	14,636.92	14,639.33	0.53	-0.16	-0.51	
23,136.00	92.19	93.44	7,642.74	263.82	14,731.69	14,734.01	0.33	-0.06	0.33	
23,231.00	92.10	92.90	7,639.19	258.57	14,826.48	14,828.70	0.58	-0.09	-0.57	
23,325.00	92.27	92.95	7,635.60	253.78	14,920.29	14,922.43	0.19	0.18	0.05	
23,420.00	92.34	93.17	7,631.78	248.71	15,015.07	15,017.12	0.24	0.07	0.23	
23,515.00	92.40	93.05	7,627.86	243.56	15,109.85	15,111.81	0.14	0.06	-0.13	
23,610.00	92.43	93.17	7,623.85	238.41	15,204.63	15,206.50	0.13	0.03	0.13	
<b>LAST SURVEY - 23610' MD, 7624' TVD</b>										
23,649.00	92.43	93.17	7,622.20	236.26	15,243.53	15,245.36	0.00	0.00	0.00	
<b>EXTRAPOLATION TO TD - 23649' MD, 1904' FSL, 330' FEL SEC 6</b>										

Design Targets										
Target Name	Dip Angle (°)	Dip Dir. (°)	TVD (usft)	+N/-S (usft)	+E/-W (usft)	Northing (usft)	Easting (usft)	Latitude	Longitude	
PBHL-PROSPER FARM	0.00	0.00	7,615.00	232.22	15,243.86	1,692,157.68	3,257,474.96	39.730215°N	104.584555°W	
- actual wellpath misses target center by 8.26usft at 23649.00usft MD (7622.20 TVD, 236.26 N, 15243.53 E)										
- Point										
LP-PROSPER FARMS 4	0.00	0.00	7,805.00	772.26	-220.79	1,692,551.08	3,242,005.95	39.731710°N	104.639538°W	
- actual wellpath misses target center by 28.34usft at 8168.51usft MD (7781.78 TVD, 788.43 N, -219.20 E)										
- Point										

Design Annotations					
Measured Depth (usft)	Vertical Depth (usft)	Local Coordinates		Comment	
		+N/-S (usft)	+E/-W (usft)		
7,152.00	7,066.68	716.59	-769.34	KOP - 7152' MD, 7067' TVD	
8,166.92	7,781.69	788.48	-220.79	~330' X-OVER PNT - 8166.92' MD, 2236' FSL, 330' FWL SEC 2	
8,288.00	7,786.35	785.48	-99.85	HZ LANDING PNT - 8288' MD, 7786' TVD	
23,610.00	7,623.85	238.41	15,204.63	LAST SURVEY - 23610' MD, 7624' TVD	
23,649.00	7,622.20	236.26	15,243.53	EXTRAPOLATION TO TD - 23649' MD, 1904' FSL, 330' FEL SEC 6	

## Survey Report

<b>Company:</b>	CRESTONE PEAK RESOURCES	<b>Local Co-ordinate Reference:</b>	Well PROSPER FARMS 4-65 2-1-6 3AH
<b>Project:</b>	ARAPAHOE COUNTY	<b>TVD Reference:</b>	KB 25' @ 5656.51usft
<b>Site:</b>	SEC 2-T4S-R65W	<b>MD Reference:</b>	KB 25' @ 5656.51usft
<b>Well:</b>	PROSPER FARMS 4-65 2-1-6 3AH	<b>North Reference:</b>	True
<b>Wellbore:</b>	OWB	<b>Survey Calculation Method:</b>	Minimum Curvature
<b>Design:</b>	FINAL SURVEY	<b>Database:</b>	EDT_32Bit_ODBC

Checked By: _____	Approved By: _____	Date: _____
-------------------	--------------------	-------------