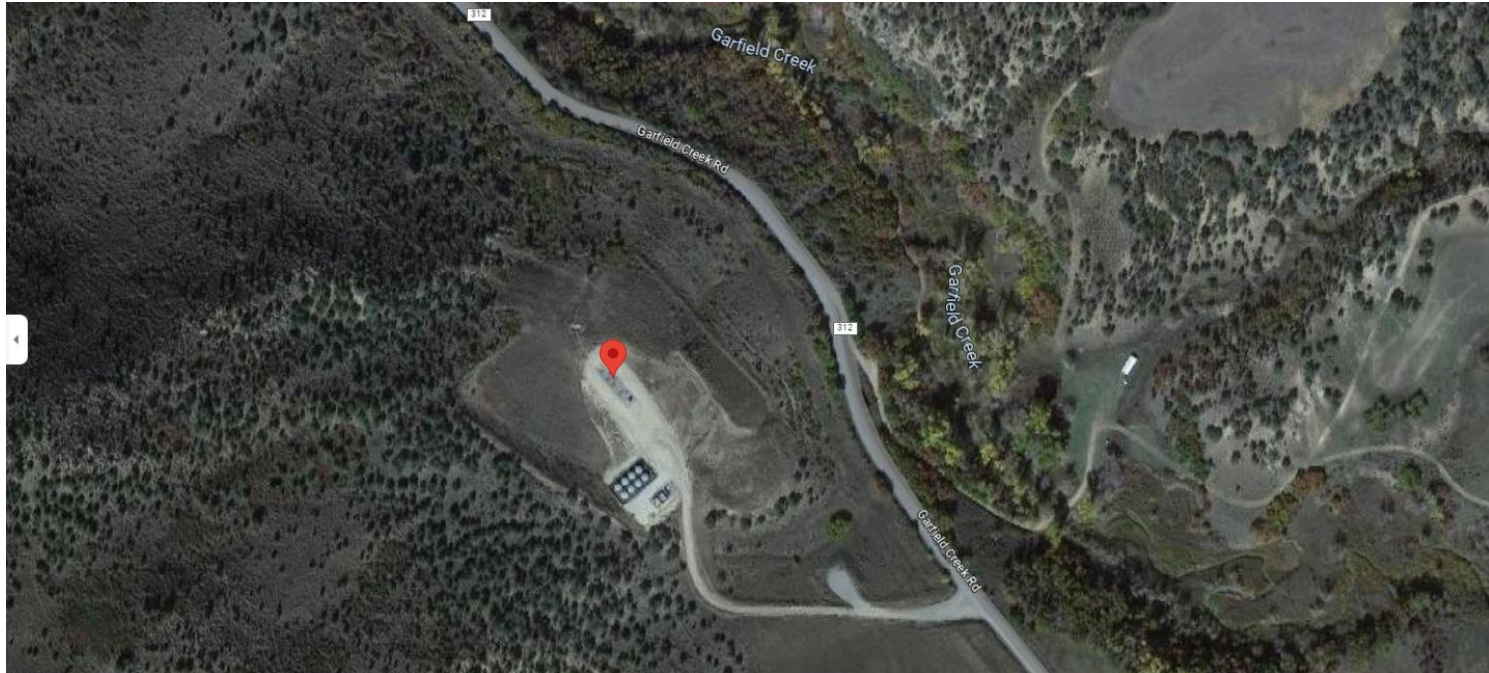


Storm Water Management and Erosion control

Location Name: KP 22-22 Pad

Location #: 420972



Location Overview: Location is approximately 186 yards from
Garfield Creek

Section/Township/Range: 22 6S91W



COLORADO
Oil & Gas Conservation
Commission
Department of Natural Resources

Storm water Management and Erosion control

Location Name: KP 22-22 Pad

Location #: 420972



North West corner of location.



North East corner of location.



South West corner of location.



South East corner of location.

Storm water Management and Erosion control

Location Name: KP 22-22 Pad

Location #: 420972



Photo # 259 Lack of stabilization on cut slope



Photo # 217 Erosion/sediment encroaching on equipment

Storm water Management and Erosion control

Location Name: KP 22-22 Pad

Location #: 420972



Photo # 230 Erosion/sediment encroaching on equipment