

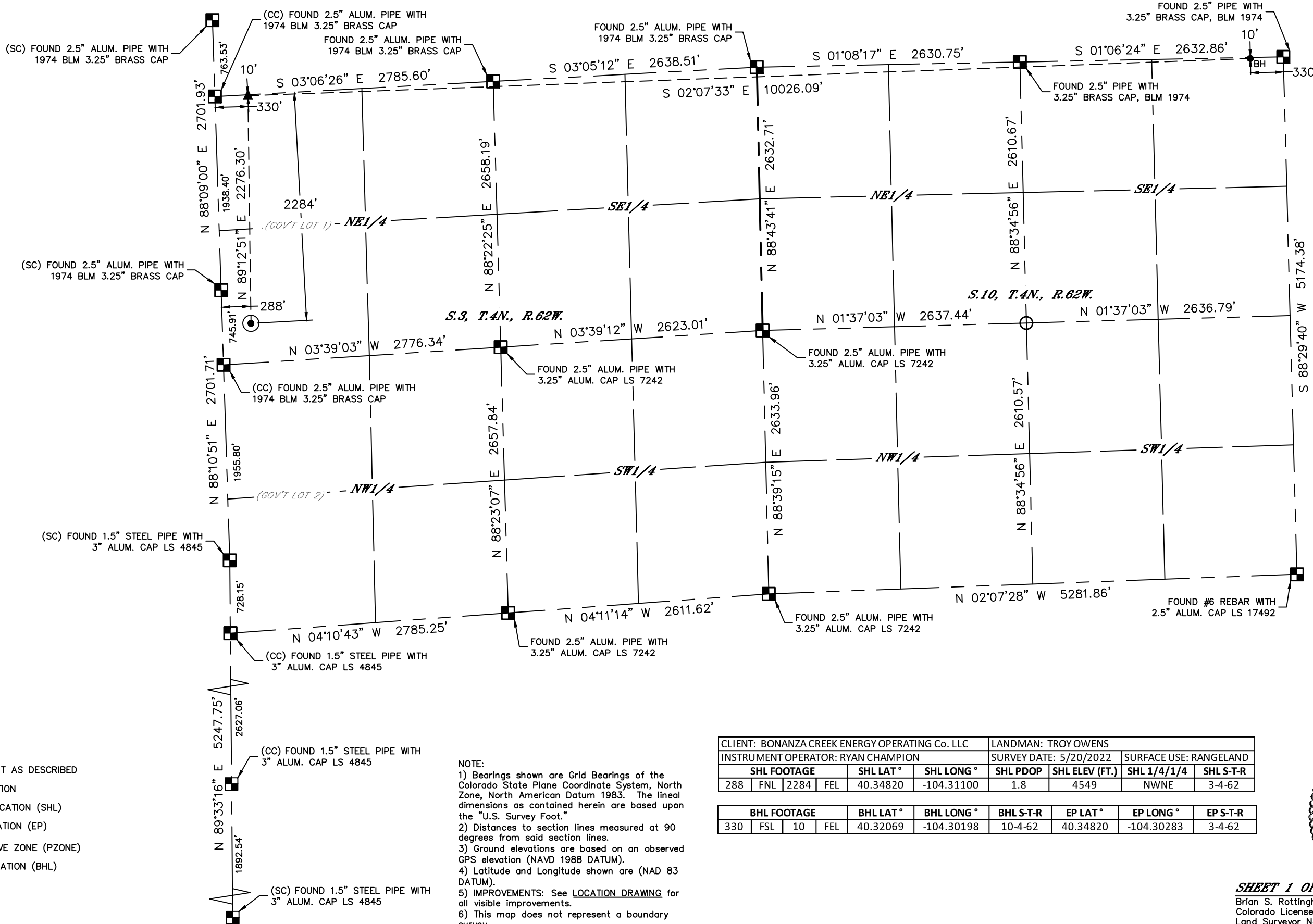


Lat40, Inc. 6250 W. 10th Street, Unit 2, Greeley, CO 970-515-5294

WELL LOCATION CERTIFICATE

STATE SEVENTY HOLES U-Y-10HNXRL
BONANZA CREEK ENERGY OPERATING CO LLC

Q: NW4NE4
SECTION: 3
TOWNSHIP: 4N
RANGE: 62W
6TH. P.M.
WELD COUNTY, CO

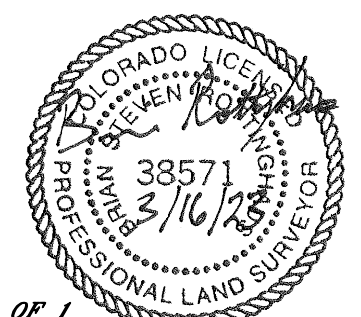
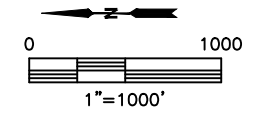


- LEGEND**
- = ALIQUOT MONUMENT AS DESCRIBED
 - = CALCULATED POSITION
 - ⊙ = SURFACE HOLE LOCATION (SHL)
 - ▲ = ENTRY POINT LOCATION (EP)
 - ◆ = TOP OF PRODUCTIVE ZONE (PZONE)
 - = BOTTOM HOLE LOCATION (BHL)
 - ⊕ = EXISTING WELL
 - ⊖ = ABANDONED WELL

NOTE:

- 1) Bearings shown are Grid Bearings of the Colorado State Plane Coordinate System, North Zone, North American Datum 1983. The lined dimensions as contained herein are based upon the "U.S. Survey Foot."
- 2) Distances to section lines measured at 90 degrees from said section lines.
- 3) Ground elevations are based on an observed GPS elevation (NAVD 1988 DATUM).
- 4) Latitude and Longitude shown are (NAD 83 DATUM).
- 5) IMPROVEMENTS: See LOCATION DRAWING for all visible improvements.
- 6) This map does not represent a boundary survey.

CLIENT: BONANZA CREEK ENERGY OPERATING Co. LLC				LANDMAN: TROY OWENS					
INSTRUMENT OPERATOR: RYAN CHAMPION				SURVEY DATE: 5/20/2022		SURFACE USE: RANGELAND			
SHL FOOTAGE	SHL LAT°	SHL LONG°	SHL PDOP	SHL ELEV (FT.)	SHL 1/4/1/4	SHL S-T-R			
288	FNL	2284	FEL	40.34820	-104.31100	1.8	4549	NWNE	3-4-62
BHL FOOTAGE	BHL LAT°	BHL LONG°	BHL S-T-R	EP LAT°	EP LONG°	EP S-T-R			
330	FSL	10	FEL	40.32069	-104.30198	10-4-62	40.34820	-104.30283	3-4-62



SHEET 1 OF 1
 Brian S. Rottinghaus—On behalf of Lat40, Inc.
 Colorado Licensed Professional Land Surveyor DATE: 3/16/2023
 Land Surveyor No. 38571 PROJECT#: 2022166